

Task Force on Kai Tak Harbourfront Development

For information
on 14 May 2013

TFKT/05/2013

Kai Tak Development Progress Report as of April 2013

PURPOSE

This paper provides an overview of the latest progress of Kai Tak Development (KTD).

BACKGROUND

2. The KTD is a huge and highly complex development project spanning a total planning area of over 320 hectares and covering the ex-airport site together with the adjoining hinterland districts of Kowloon City, Wong Tai Sin and Kwun Tong. It is our vision to develop the KTD into “a distinguished, vibrant, attractive and people-oriented community by the Victoria Harbour”.

CURRENT SITUATION

3. The updated programme chart is at **Annex A**. The following are highlights of the latest progress -

Projects Planned for Completion in 2013

4. Construction of key KTD projects targeted for completion in 2013 is progressing on schedule. These projects include the Kai Tak Cruise Terminal (KTCT) building and the first berth, installation of a new radar on top of the KTCT building, public rental housing development in the north apron area (i.e. Kai Ching Estate (啟晴邨) and Tak Long Estate (德朗邨)), early phases of the District Cooling System (DCS), a fire station cum ambulance depot at the south apron area, Runway Park Phase 1 and the

Task Force on Kai Tak Harbourfront Development

TFKT/05/2013

associated supporting infrastructure. A location plan showing the above projects is at **Annex B**.

Infrastructure Works at the North Apron Area

5. The public rental housing development will be completed by phases from Q2 to Q4 of 2013. New roads and associated infrastructure works are being completed under Stage 1 infrastructure works to tie in with the population intake of the public rental housing development. In accordance with the KTD implementation programme, we plan to take forward the construction of Stage 3A and Stage 4 infrastructure works to facilitate early land disposal for various developments by phases. Invitation for tenders for the two works contracts were closed in mid-April 2013. Subject to the funding approval, the infrastructure works will start in the second half of 2013.

Shatin-to-Central Link (SCL)

6. The construction of SCL at Sung Wong Toi area commenced in August 2012. The other two contracts for SCL at Kai Tak Station, i.e. the section from Diamond Hill Station to Kai Tak Station and the section from Kai Tak Station to To Kwa Wan Station, were awarded on 7 March and 25 April 2013 respectively. All the SCL works in Kai Tak are targeted to complete by 2018.

Environmentally Friendly Linkage System (EFLS)

7. The Stage 1 public consultation (PC) was completed in October 2012. Views on the preliminary findings of the EFLS Study were collected from this Task Force, the Panel on Development, the Kowloon City, Wong Tai Sin and Kwun Tong District Councils, professional institutes, transport operators, various focus/interest groups and two public engagement workshops. Further assessments are being undertaken to address major concerns received in Stage 1 PC. We are making

Task Force on Kai Tak Harbourfront Development

TFKT/05/2013

preparation for the Stage 2 PC to be conducted later this year.

Kwun Tong Waterfront Promenade

8. Stage 2 of the project will involve the footprint of the Kwun Tong Public Cargo Working Area, which was closed down in August 2011. The construction commenced on 18 February 2013 for completion in end 2014.

Kai Tak River

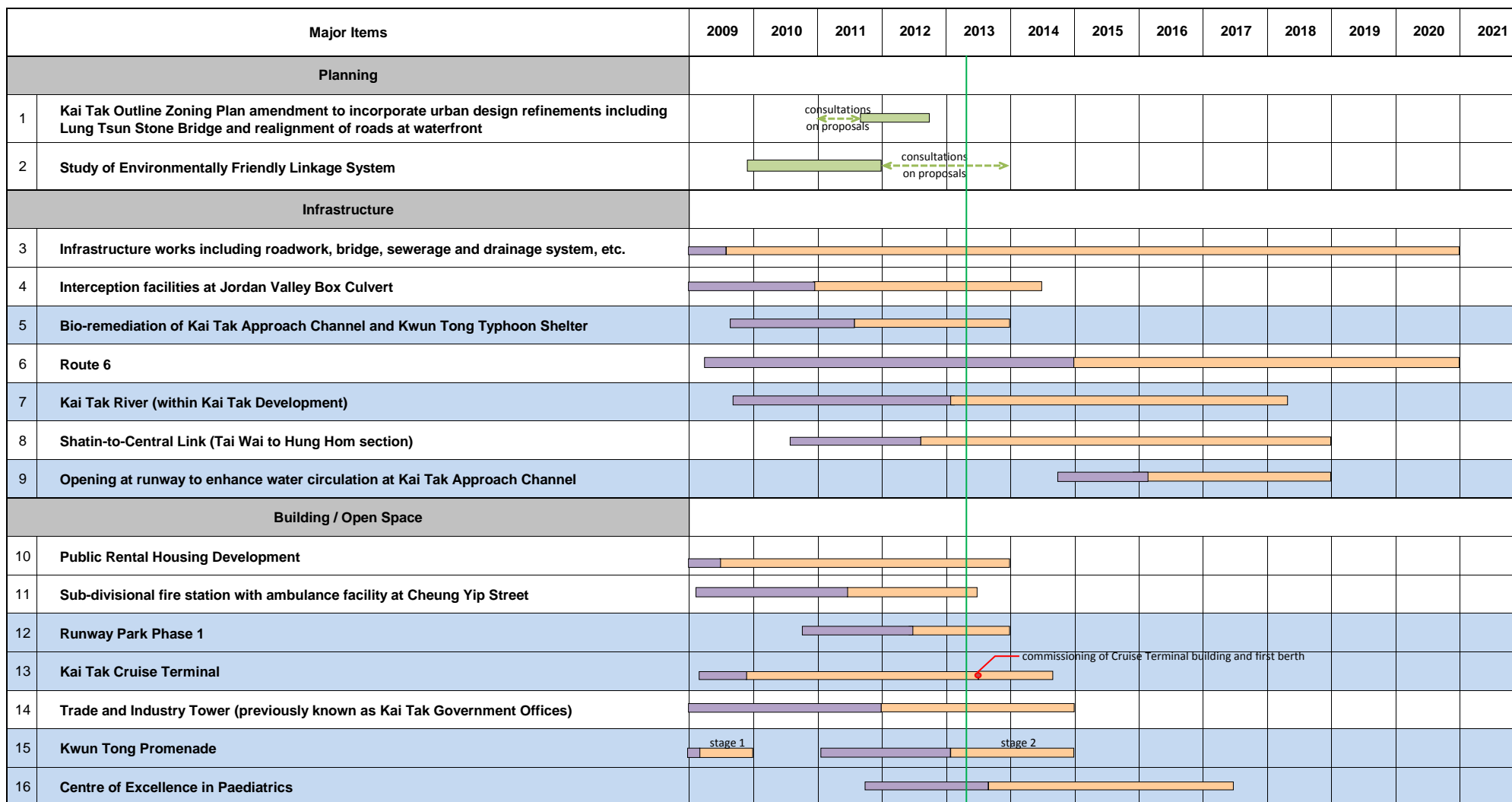
9. The contract for reconstruction and upgrading of Kai Tak River¹ within KTD commenced on 31 January 2013 for completion by phases starting from 2016.

**Civil Engineering and Development Department
April 2013**

¹ Contract No. KL/2011/01 “Kai Tak Development - Reconstruction and Upgrading of Kai Tak Nullah”

**Task Force on Kai Tak Harbourfront Development
Kai Tak Development - Programme Chart (as of April 2013)**

Annex A



Note:
The above programme is tentative and shall be subject to review due to future planning and design, and approval such as for servicing fundina.



Task Force on Kai Tak Harbourfront Development

Annex B



Projects Planned for Completion in 2013
(Item Nos. 4, 10 to 13 & 15 of Programme Chart)