

Task Force on Kai Tak Harbourfront Development

For information
on 27 November 2012

TFKT/05/2012

Kai Tak Development Progress Report as of November 2012

PURPOSE

This paper provides an overview of the latest progress of Kai Tak Development (KTD).

BACKGROUND

2. The KTD is a huge and highly complex development project spanning a total planning area of over 320 hectares and covering the ex-airport site together with the adjoining hinterland districts of Kowloon City, Wong Tai Sin and Kwun Tong. It is our vision to develop the KTD into “a distinguished, vibrant, attractive and people-oriented community by the Victoria Harbour”.

CURRENT SITUATION

3. The updated programme chart is at **Annex A**. The following are highlights of the latest progress -

Projects Planned for Completion in 2013

4. Construction of all key projects to be completed in 2013 is progressing well. They include the cruise terminal building cum the first berth at the former runway, the early phase of district cooling system, the public rental housing development and the advance supporting infrastructure works. A location plan of all these projects is at **Annex B**.

Urban Design Enhancement Proposal

Task Force on Kai Tak Harbourfront Development

For information
on 27 November 2012

TFKT/05/2012

5. Kai Tak Outline Zoning Plan (OZP) No. S/K22/4, which includes the relocation of roads away from the waterfront and the provision of a 30-metre-wide Preservation Corridor for preservation of the remnants of Lung Tsun Stone Bridge, was approved in September 2012.

Environmentally Friendly Linkage System (EFLS)

6. We conducted the first stage of a two-stage public engagement (PE) exercise on the EFLS and consulted the Task Force, Districts Councils, Panel on Development, professional bodies, operators and various stakeholders to solicit views on the implementation of EFLS. The second stage PE is scheduled to commence in early 2013 with a view to building a consensus reflecting the majority of public views on the way forward for EFLS.

Trade and Industry Tower (TI Tower) (previously known as the Kai Tak Government Offices)

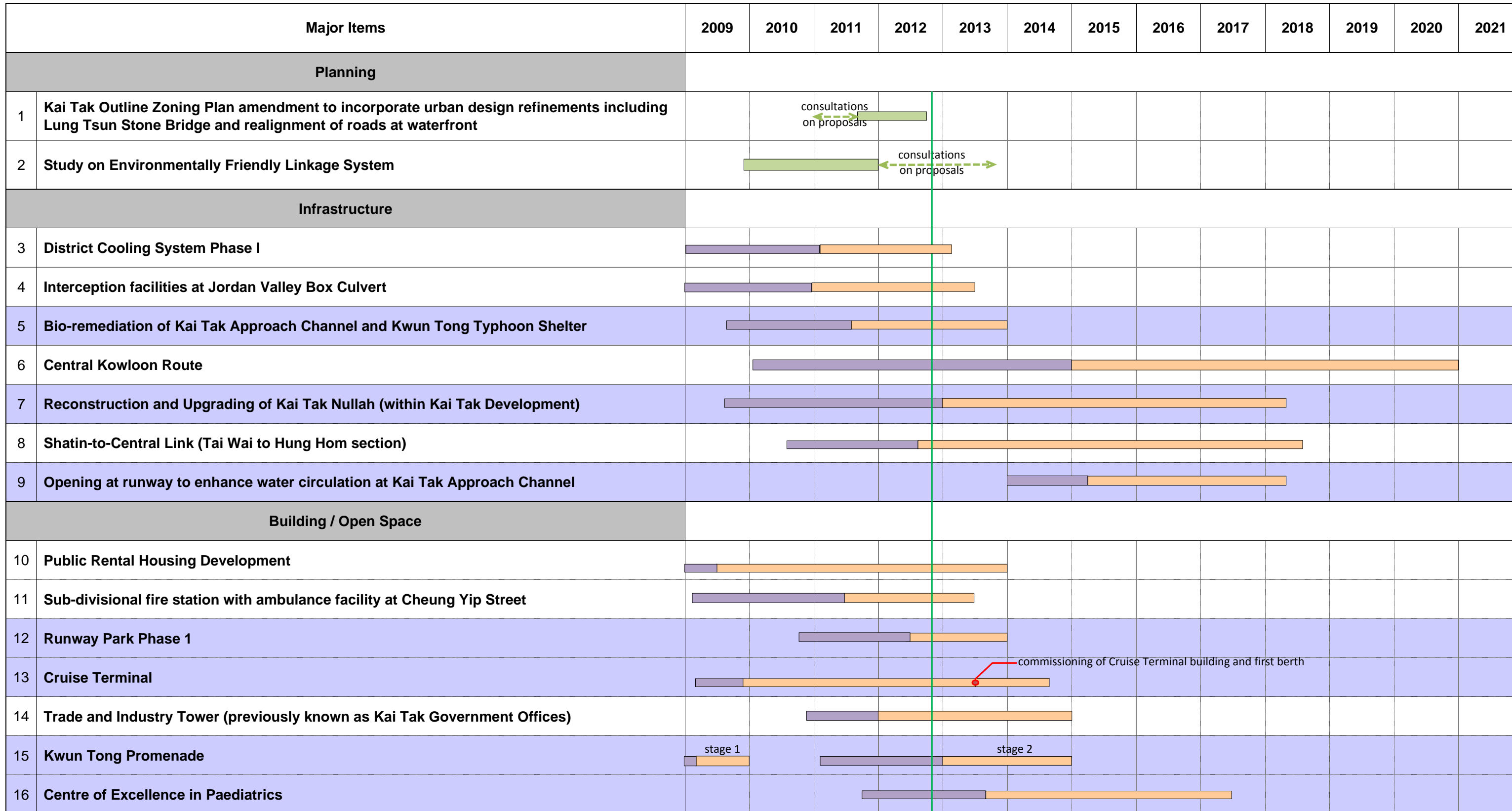
7. TI Tower will provide Government services to both the existing population in the hinterland areas, such as San Po Kong and Kowloon City, and the new population in KTD at an early stage. The construction commenced on 16 January 2012 for substantial completion in 2014.

Kwun Tong Waterfront Promenade

8. Stage 1 of the project, providing a 200-metre-long promenade, was opened for public enjoyment in January 2010. Stage 2 of the project will involve the footprint of the Kwun Tong Public Cargo Working Area, which was closed down in August 2011. The project design has been completed and the construction is scheduled to commence in early 2013 with a view to completing the project in end 2014.

**Civil Engineering and Development Department
November 2012**

Task Force on Kai Tak Harbourfront Development Kai Tak Development - Programme Chart (as of November 2012)



Note: Programmes indicated are tentative and subject to approval, funding and further planning.

Legend

Waterfront Projects

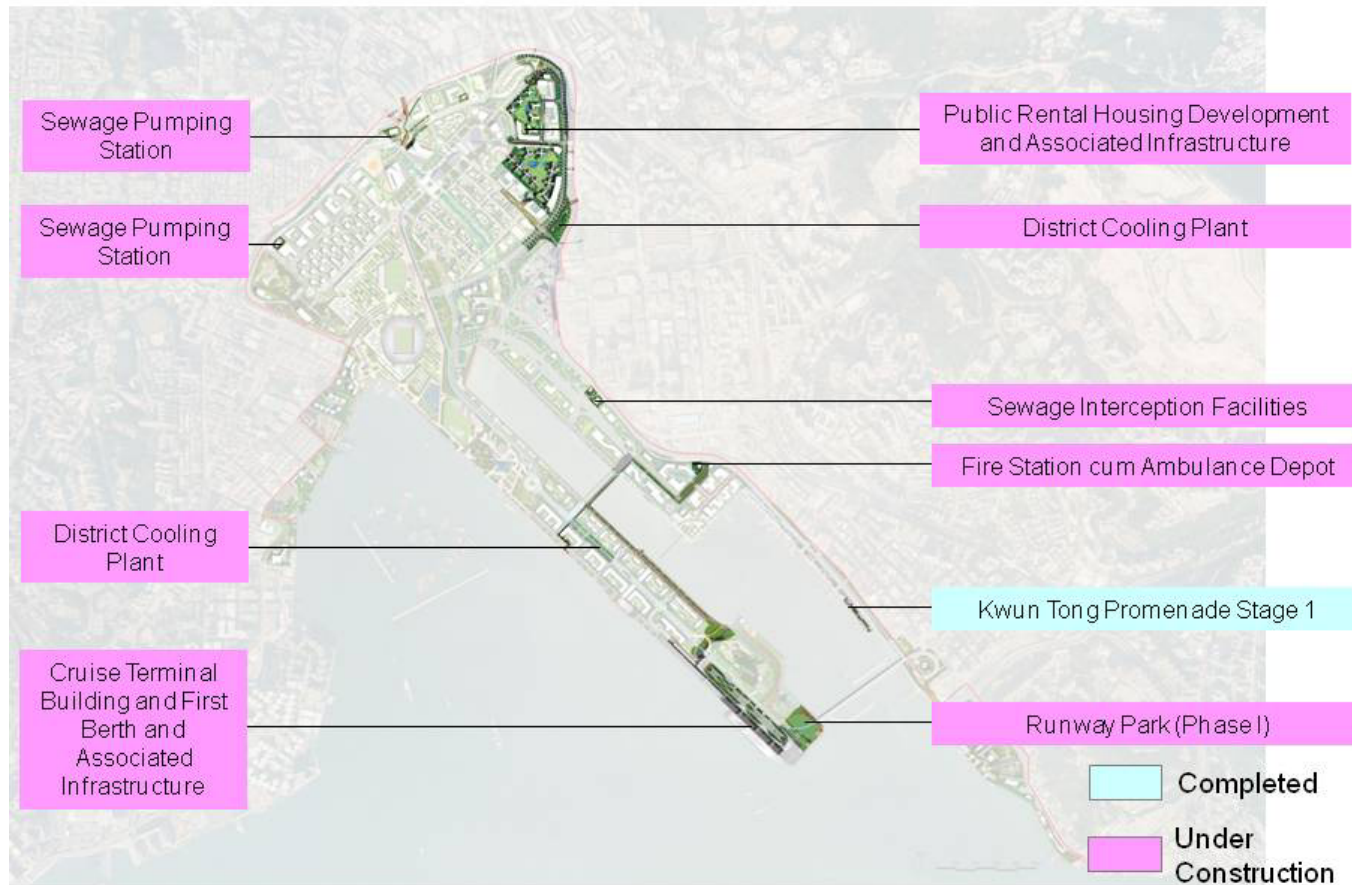
Planning Activities

Design and Tender

Construction / E&M

Task Force on Kai Tak Harbourfront Development

Annex B



Projects Planned for Completion in 2013

(Item Nos. 3, 4, 9, 10, 12 & 14 of Programme Chart)