

Task Force on Kai Tak Harbourfront Development

For information
on 12 Mar 2012

TFKT/03/2012

Kai Tak Development Progress Report as of February 2012

PURPOSE

This paper provides an overview of the latest progress of Kai Tak Development (KTD).

BACKGROUND

2. The KTD is a huge and highly complex development project spanning a total planning area of over 320 hectares and covering the ex-airport site together with the adjoining hinterland districts of Kowloon City, Wong Tai Sin and Kwun Tong. It is our vision to develop the KTD into “a distinguished, vibrant, attractive and people-oriented community by the Victoria Harbour”.

CURRENT SITUATION

3. The updated programme chart is at **Annex A**. The following are highlights of the latest progress -

Projects Planned for Completion in 2013

4. Since the approval of the Kai Tak Outline Zoning Plan (OZP) in November 2007, the implementation of KTD has been in full swing. The construction of key projects targeted for completion in 2013 is progressing well. The key projects include the cruise terminal building cum the first berth at the former runway, the early phase of district cooling system, the public rental housing development and the advance infrastructure supporting these projects. A location plan showing the above projects is at **Annex B**.

Task Force on Kai Tak Harbourfront Development

For information
on 12 Mar 2012

TFKT/03/2012

Urban Design Enhancement Proposal

5. The draft Kai Tak Outline Zoning Plan (OZP) No. S/K22/3, which includes the relocation of roads away from the waterfront and the provision of a 30-metre-wide Preservation Corridor for preserving the remnants of Lung Tsun Stone Bridge, was exhibited for public inspection from 26 August to 26 October 2011. The Town Planning Board (TPB) conducted a public hearing meeting to consider the representations received on the draft OZP on 17 February 2012. The draft OZP together with the decision of the TPB meeting will be gazetted on 9 March 2012 for further representations. Another public hearing meeting is tentatively scheduled for late May 2012 to consider the further representations.

Kowloon East Development Office (KEDO)

6. In his 2011-12 Policy Address, the Chief Executive announced to adopt a visionary, coordinated and integrated approach to expedite the transformation of Kowloon East into an attractive, alternative Central Business District to support Hong Kong's economic development. To undertake this important initiative, a new, multi-disciplinary KEDO will be set up in the Development Bureau to steer, supervise, oversee and monitor the transformation of Kowloon East. A temporary accommodation cum an information kiosk for KEDO, which is located underneath the Kwun Tong Bypass at Hoi Bun Road, is under construction for completion by mid 2012.

Integration and Connection with Adjacent Districts

7. To assess the feasibility of the Kai Tak Environmentally Friendly Linkage System (EFLS) proposal, we commenced a consultancy study in end 2009 to investigate the engineering, environmental, financial and operational aspects of the proposal, as well as the scope of extending the EFLS beyond KTD to adjacent districts so as to enhance integration and revitalization of Kowloon East. We have just started the two-stage public consultation exercise in the 1st Quarter of 2012 to solicit public views on

Task Force on Kai Tak Harbourfront Development

For information
on 12 Mar 2012

TFKT/03/2012

the implementation of EFLS as well as the use of road-based green transport vehicles.

8. Please refer to Paper No. TFKT/04/2012 of this meeting on the EFLS for the details.

Trade and Industry Tower (TI Tower) (previously known as the Kai Tak Government Offices)

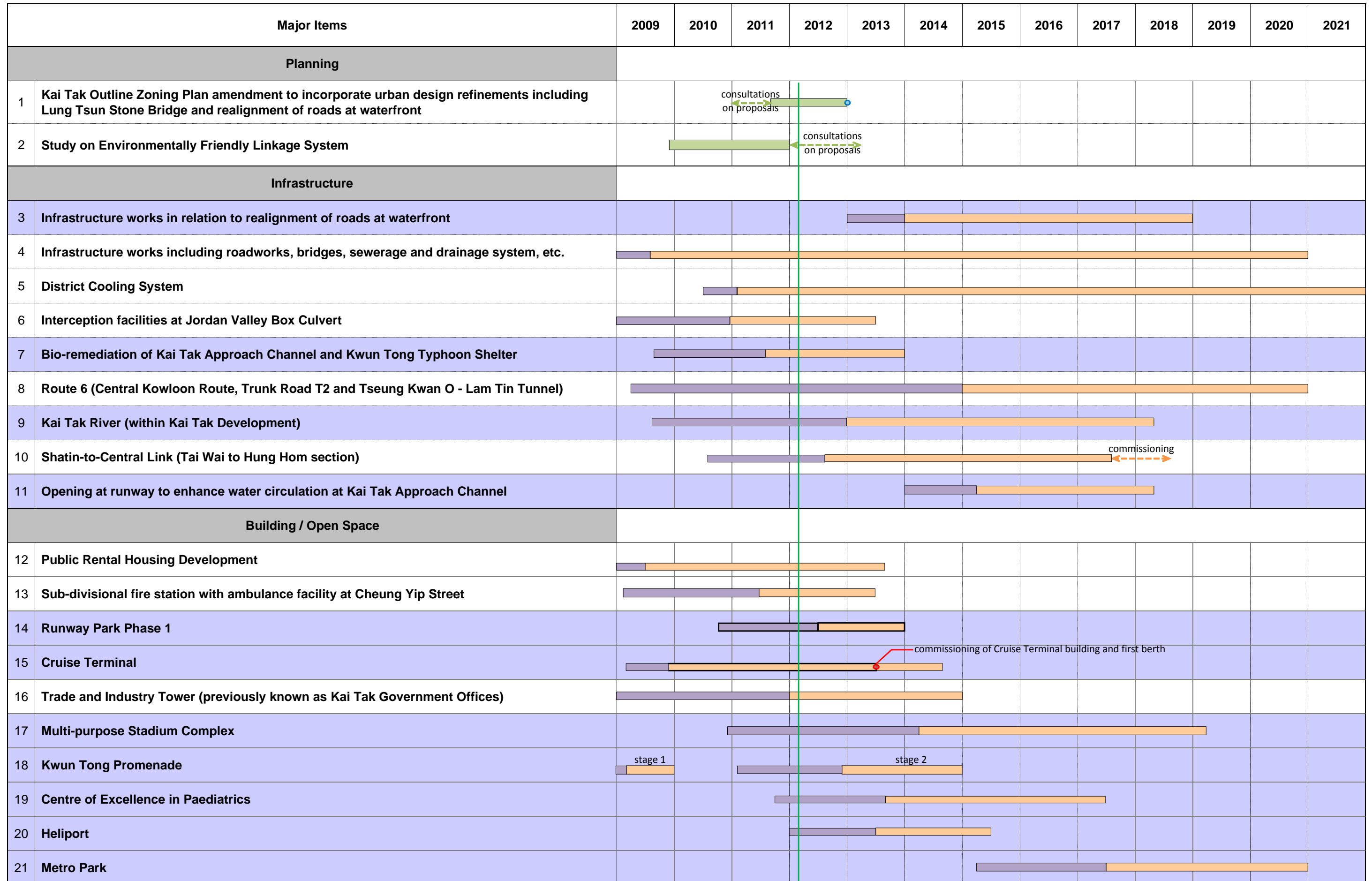
9. TI Tower will provide Government services to both the existing population in the hinterland areas, such as San Po Kong and Kowloon City, and the new population in the KTD at an early stage. The construction commenced on 16 January 2012 for substantial completion in 2014.

Kwun Tong Waterfront Promenade

10. Stage 1 of the project was completed in late 2009 providing a 200-metre-long promenade, which was opened for public enjoyment in January 2010. Stage 2 of the project will involve the footprint of the Kwun Tong Public Cargo Working Area, which was closed down in August 2011. The project design has commenced with a view to completing the project in end 2014.

**Civil Engineering and Development Department
March 2012**

**Task Force on Kai Tak Harbourfront Development
Kai Tak Development - Programme Chart (as of February 2011)**



Note: Programmes indicated are tentative and subject to approvals, funding and further planning.

Legend

Waterfront Projects

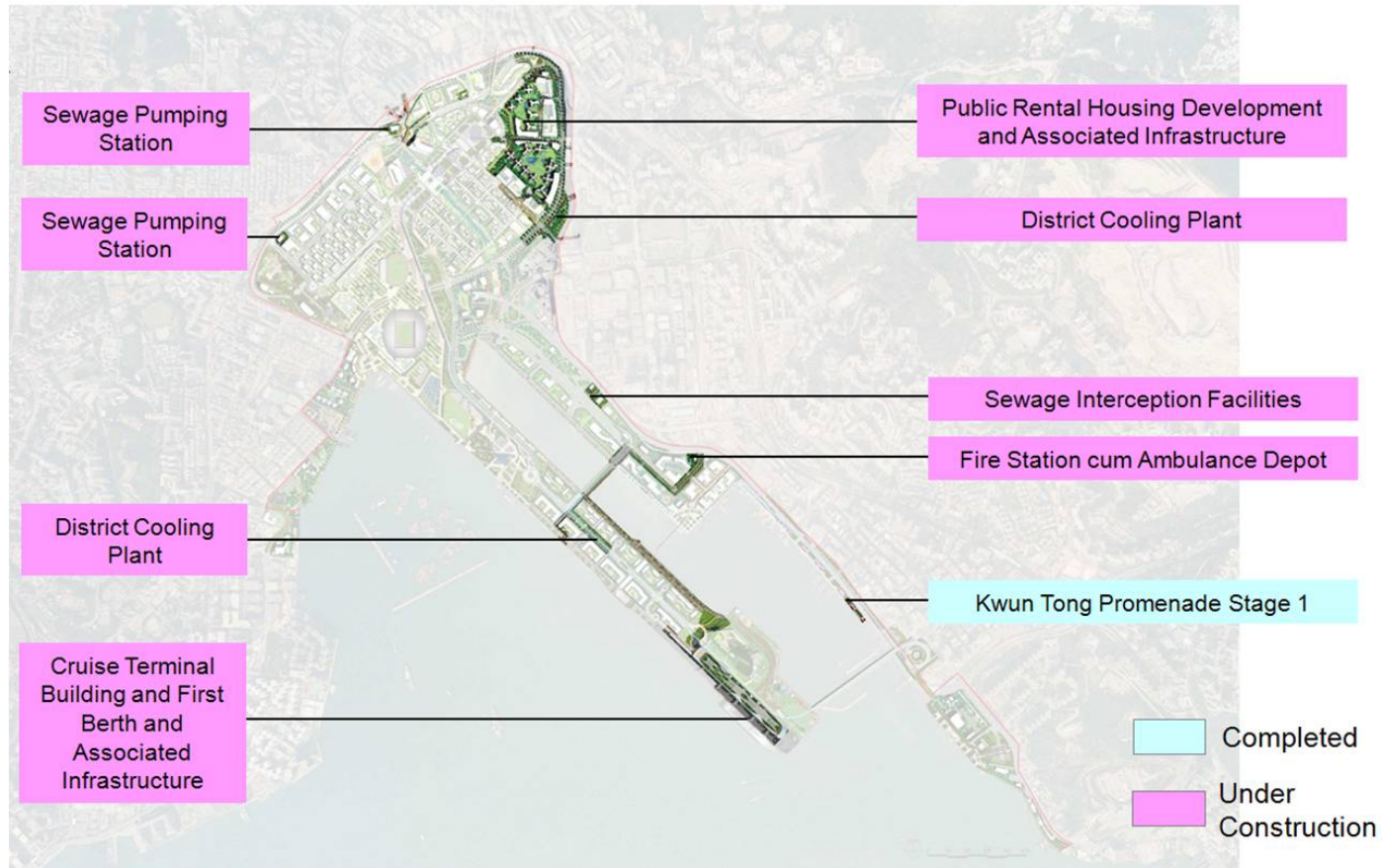
Planning Activities

Design and Tender

Construction

Task Force on Kai Tak Harbourfront Development

Annex B



Projects Planned for Completion in 2013

(Item Nos. 4 to 6, 12 to 13, 15 & 18 of Programme Chart)