

Meeting of KTTF | 6 May 2022

Reinstatement Works at Cha Kwo Ling Promenade fronting the Kwun Tong Sewage Pumping Station

觀塘污水泵房對出茶果嶺海濱的修復工程

Contract No. DC/2017/05

Enhancement Works for Kwun Tong Sewage Pumping Station

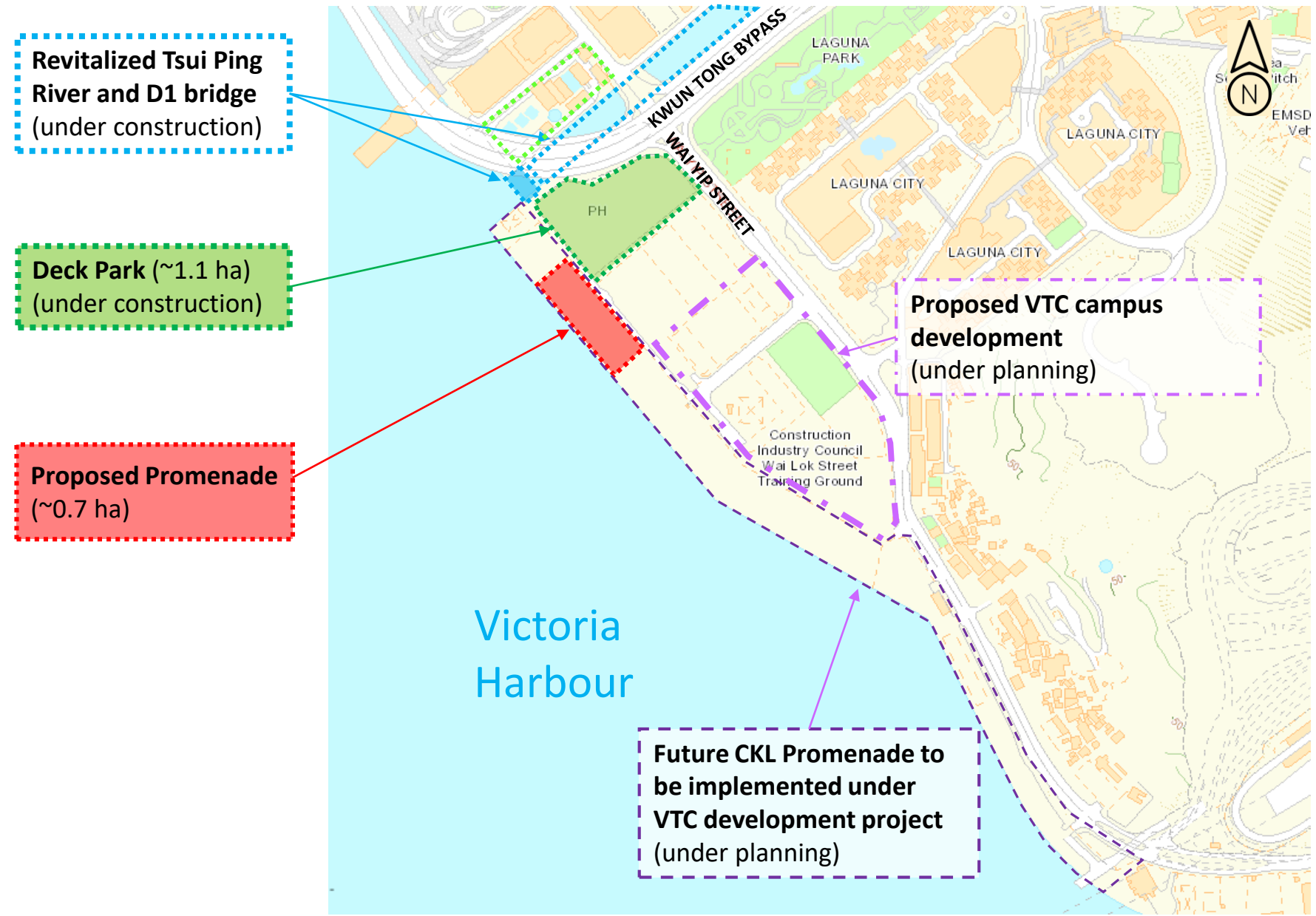


ATKINS

Member of the SNC-Lavalin Group

Background

- Consulted KTF on the design of Landscaped Deck above Kwun Tong Sewage Pumping Station (“Deck Park”) on 9 April 2021
- Occupy a works area within the future Cha Kwo Ling (CKL) Promenade
- Under “Incremental Approach”, DSD went the extra mile to reinstate and beautify the works area under the original project scope (“Proposed Promenade”)

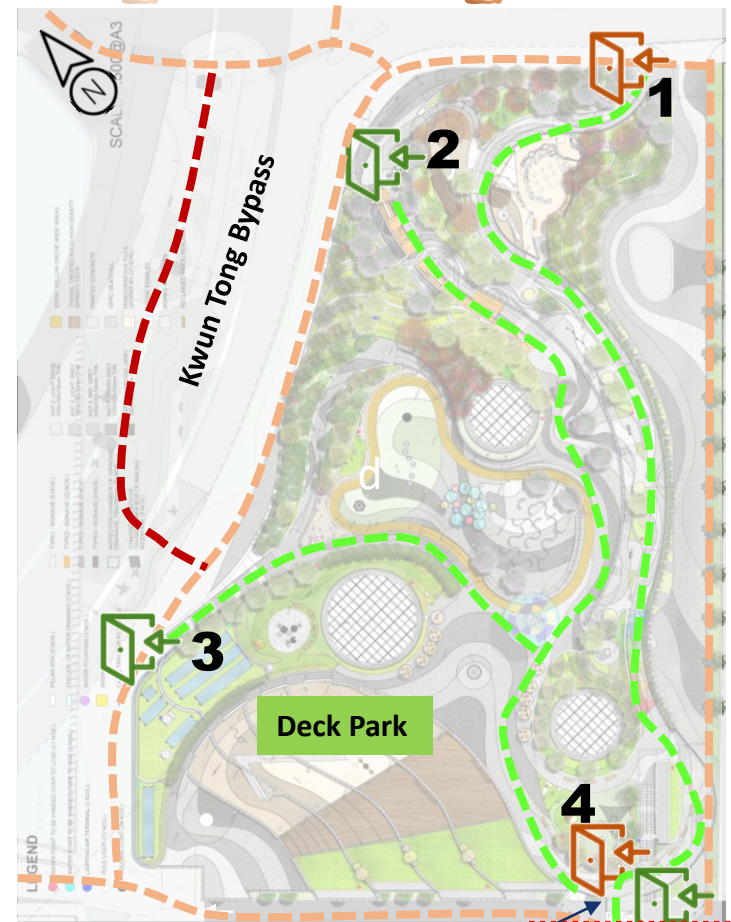


- Additional 0.7 ha promenade and 130 m long promenade on top of the original 1.1 ha Deck Park
 - Increase total open space area by 64%
- Advance the opening of the Proposed Promenade by several years to 2023
- Bring forward the completion date of D1 bridge to 2023 Q1
 - Enhance the connectivity between the CKL promenade and the Kwun Tong Ferry Pier/ Kwun Tong Promenade
- Provide connection between the Deck Park and Proposed Promenade (by others originally)
 - Access to the multitude of park facilities on the Deck Park, such as toilets and drinking fountains
- Resolve the M&M arrangement with LCSD for the Proposed Promenade

Tsui Ping River

Laguna City

Mini-bus / bus stops



At-grade connection

Elevated connection (through Deck Park)

Additional at-grade connection (2024)

Entrance to Deck Park (barrier-free)

Entrance to Deck Park (staircase)

Kwun Tong Pier
Kwun Tong Promenade
via D1 Bridge

Twin 12-passenger lifts

Proposed Promenade

Victoria Harbour

Existing Condition of the Proposed Promenade



Victoria Harbour

Existing Condition of the Proposed Promenade & Deck Park



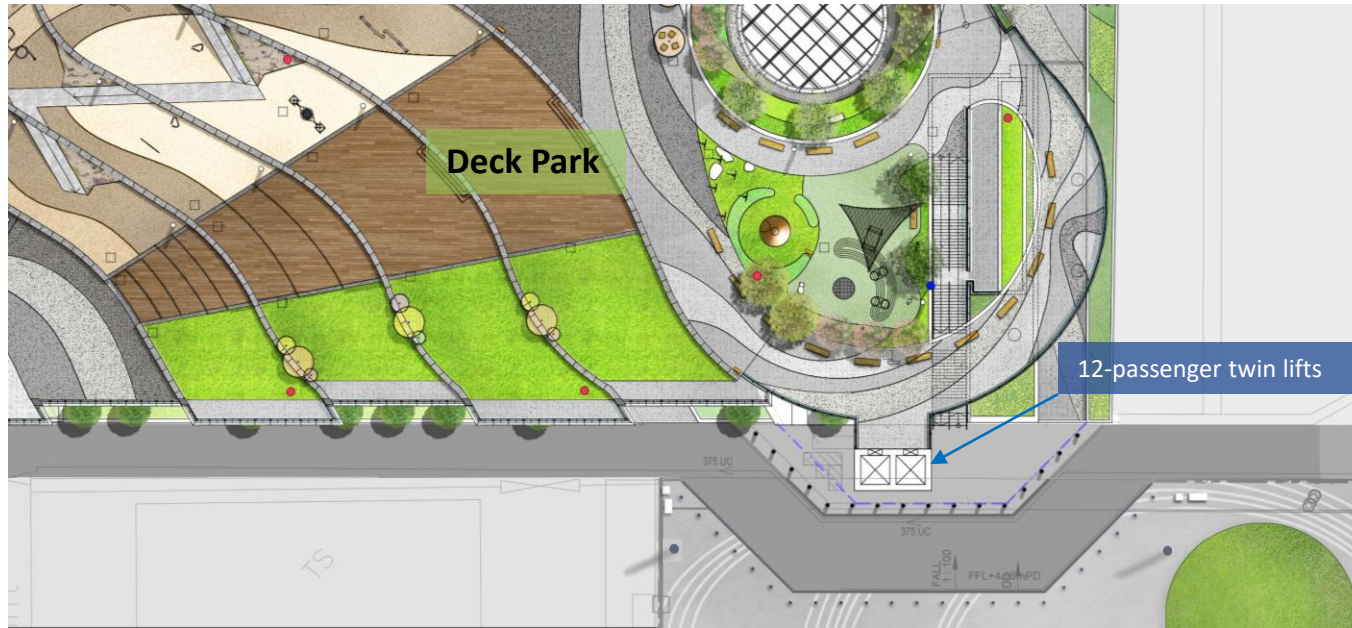
Design Concept

- Dancing Ribbons



The theme of “dancing ribbons” adopted at the Deck Park extends to the Proposed Promenade. The “dancing ribbons” are manifested through **curvilinear design language** at the Deck Park and the use of **well-proportioned white wavy lines** at the Proposed Promenade to create flow of energy throughout the area.

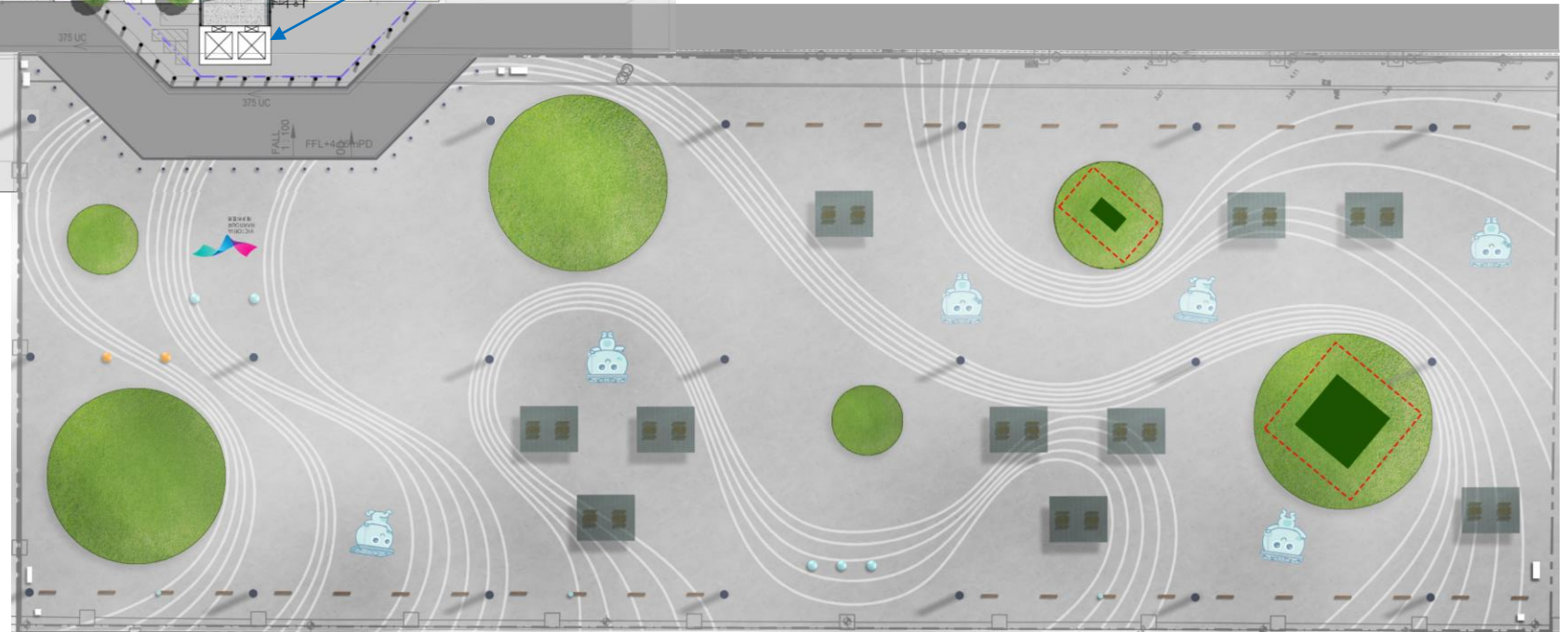
Public Enjoyment



- Ample space & electricity for future pop-up display/events (limited edition)
- Allow flexibility for future CKL development, only minor modification would be required to suit their future design

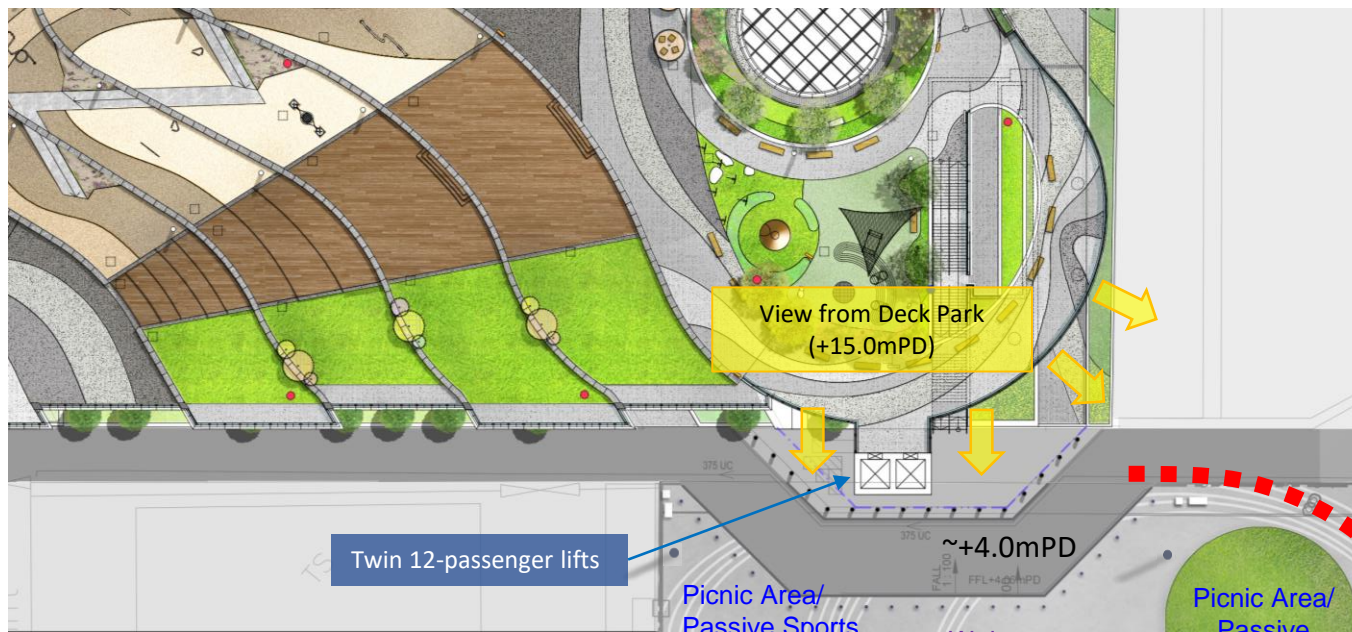


- Child-friendly (bike/scooter with parents guidance)
- Pet-friendly
- Wide spectrum of leisure activities



~50m

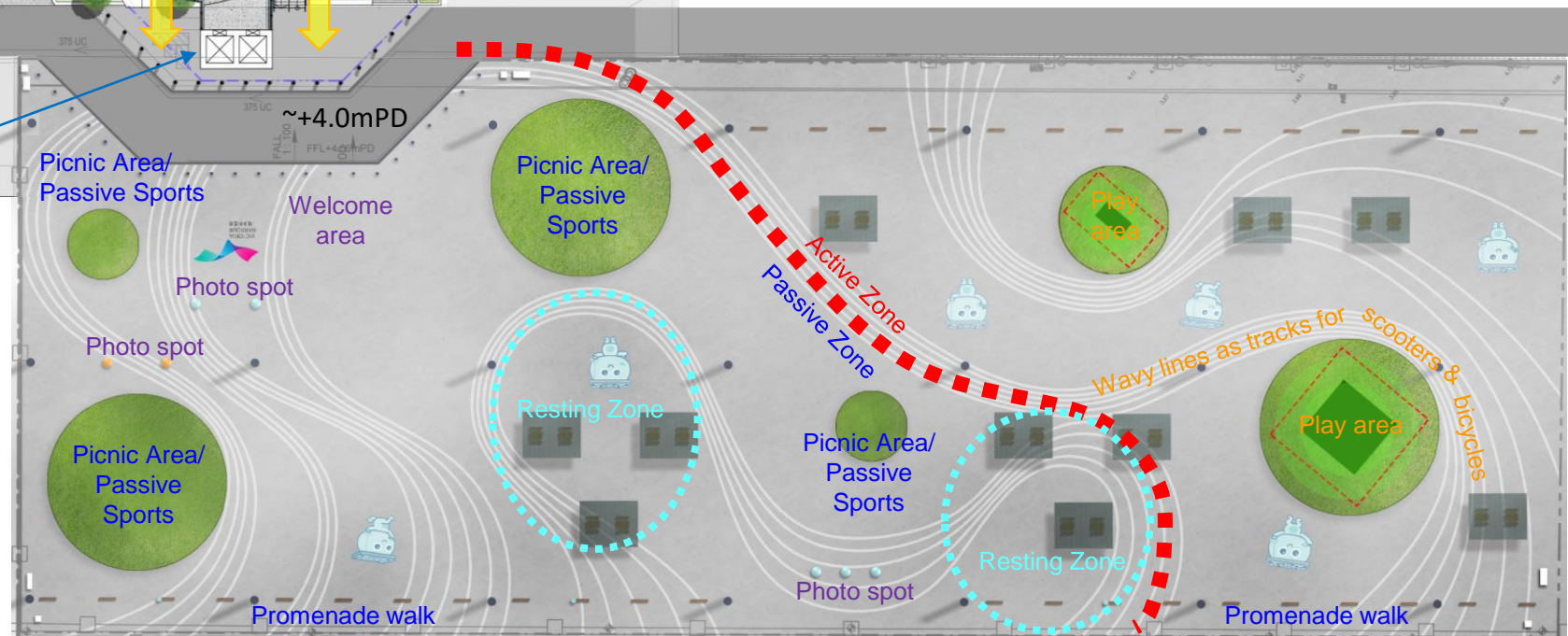
~130m



- Active & passive zones
- Shelters, tables & benches for resting
- Photo spots (mascots, floor art)
- Promenade walk
- Picnic area
- Children play area



- Shelters X 10 nos.
- Tables@ shelters X 20 nos.
- Benches@ shelters X 40 nos.
- Benches@ other location X 36 nos.



~50m

~130m

Branding & Design Elements



Signages



Victoria Harbour logo floor art



Bollard light



Removable bollard



Recycle bins



Pole light



2 Nos. of play equipment with EPDM



Planter strip with water points



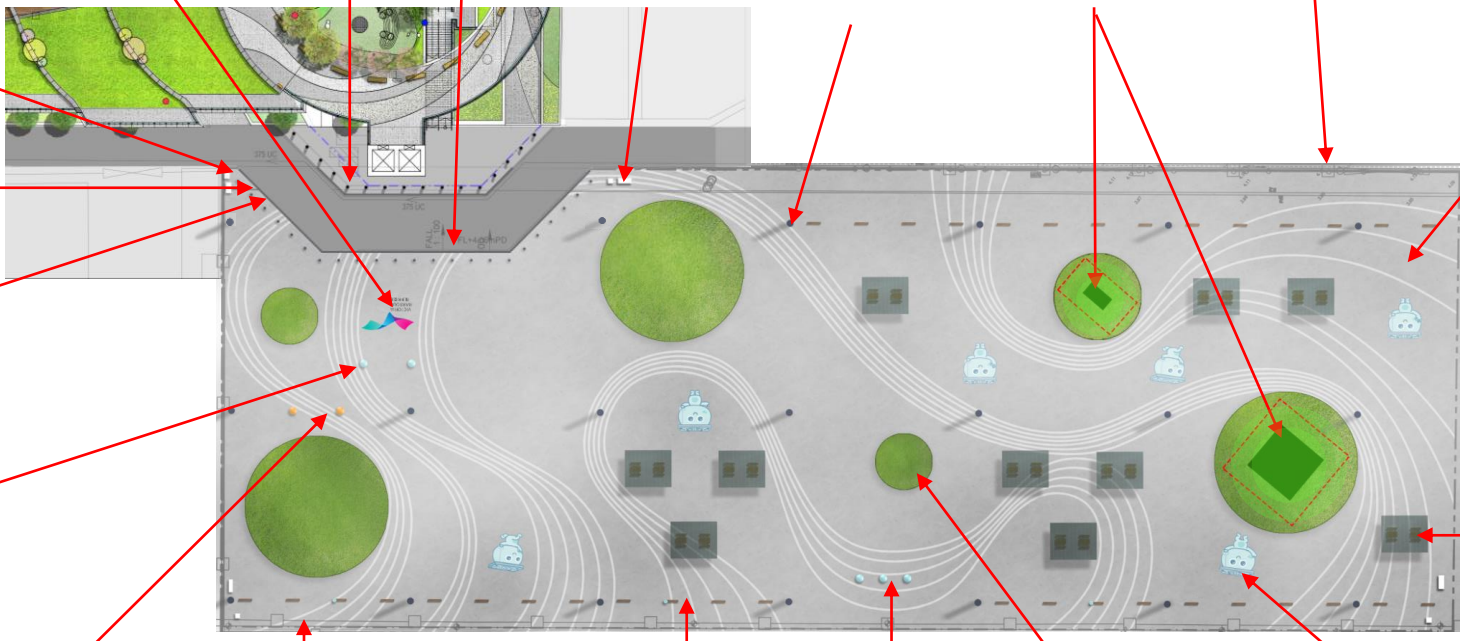
Wavy lines on concrete



Braille map



Tactiles



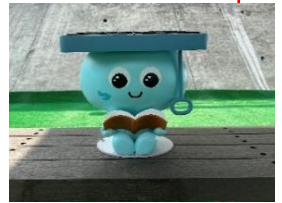
1m tall Drainy sculptures



LCSD mascots sculptures



Pet litter bin



300mm tall Drainy sculpture on bench



1m tall Drainy sculpture



Artificial turf picnic area



Drainy floor art

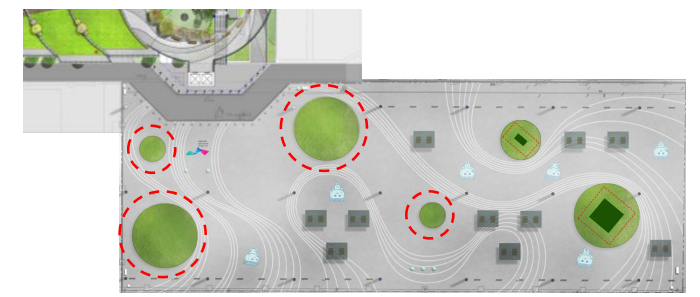


Shelter with recycled timber tables & benches



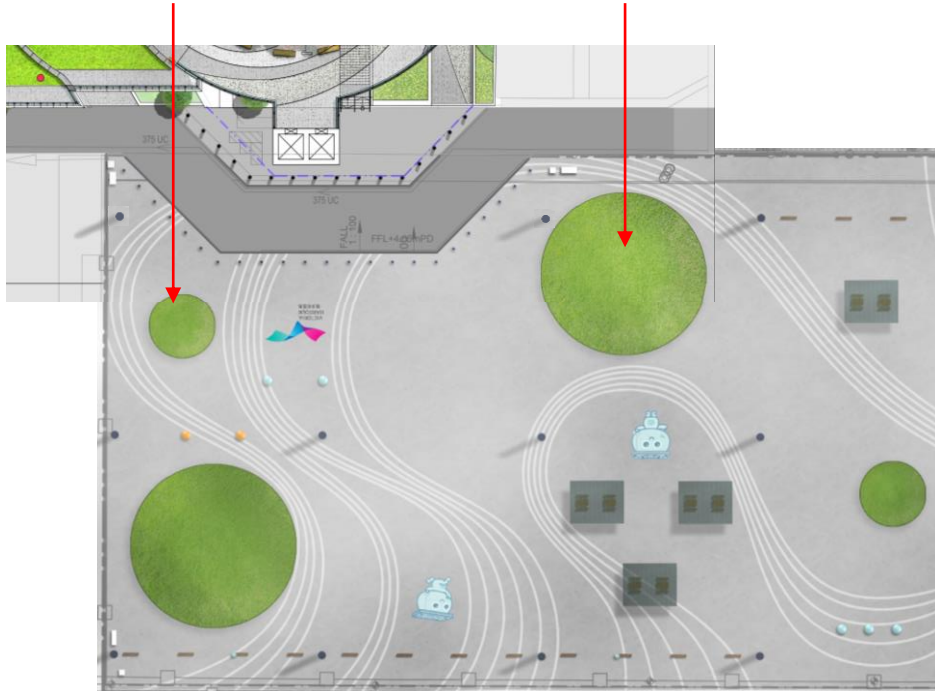
Artificial Turf & Wavy Lines

- Picnic
- Passive sports
- Chill-out



Artificial turf area dia. 6m X 2 nos.

Artificial turf area dia. 15m X 2 nos.



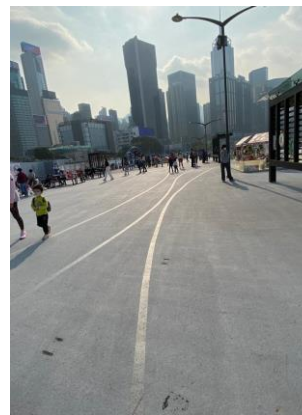
Total area of artificial turf: $353\text{m}^2 + 57\text{m}^2 = 410\text{m}^2$



Drain cell underneath



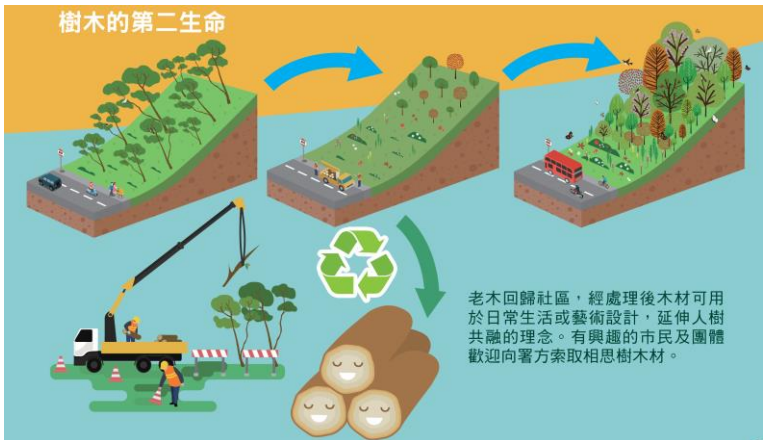
Reference photo (East Coast Park Precinct)



Reference photo for wavy lines (Wan Chai promenade)

Shelters with Recycled Timber Tables & Benches

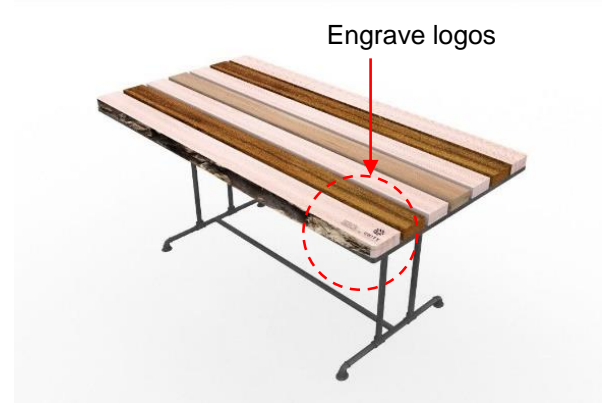
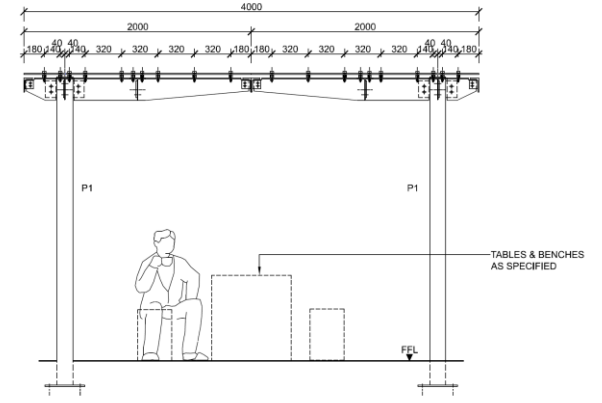
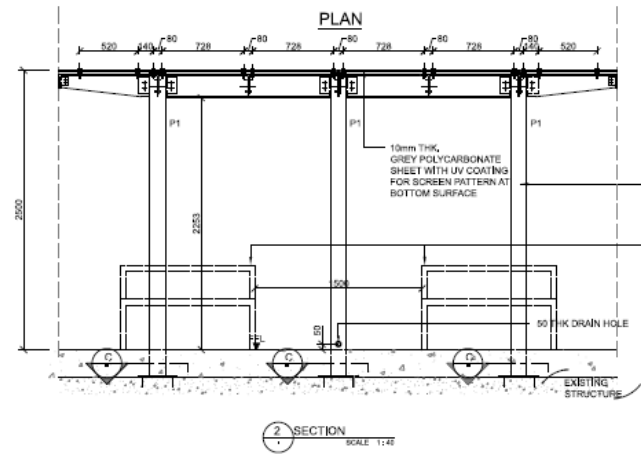
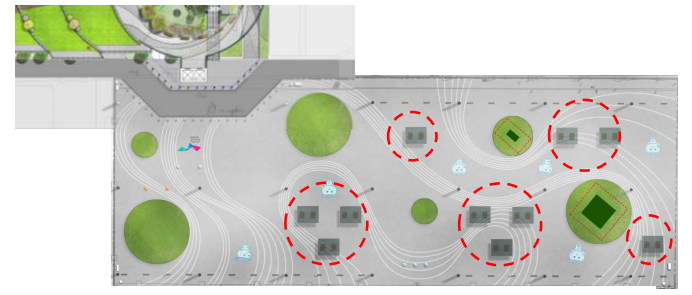
- Shelters X 10 nos.
- Tables@ shelters X 20 nos.
- Benches@ shelters X 40 nos.
- Benches@ other location X 36 nos.



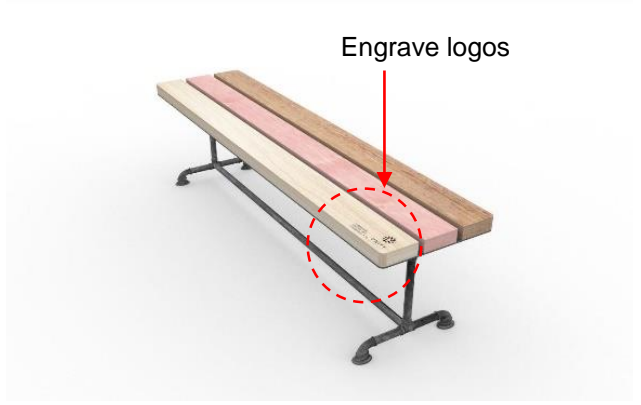
HyD Enhancement Programme of Vegetated Slopes with yard waste



Reference photo (Belcher Bay Harbourfront)



Recycled timber tables



Recycled timber benches

Colourful way finding signages to guide people to the promenade



Promenade name plate, way finding, safety, etc.
Reference photos (Choi Yee Bridge Garden & Yi Pei Square Playground)

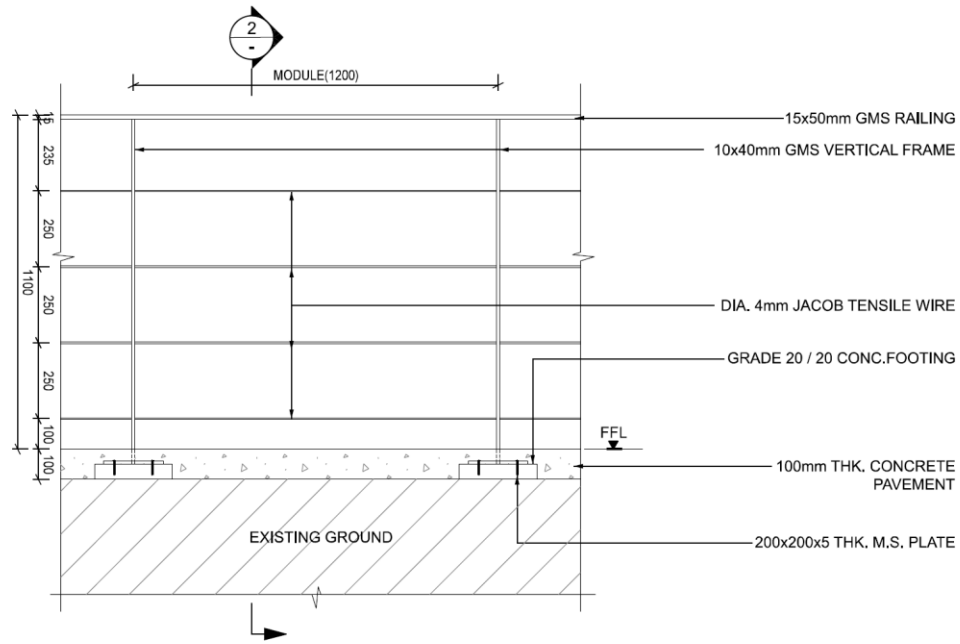
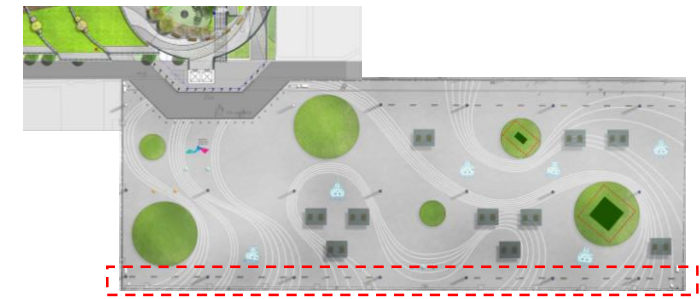


Proposed play equipment



Reference photos (Wan Chai Waterfront Promenade, East Coast Park Precinct)

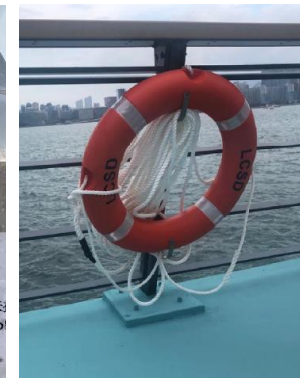
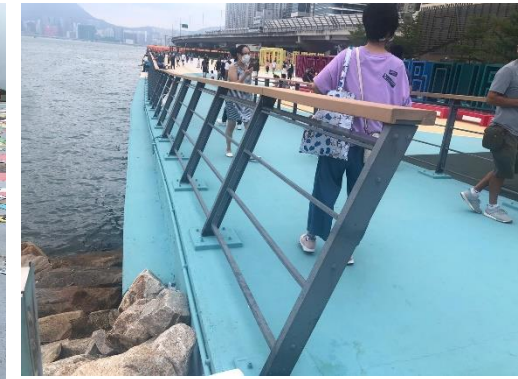
Railing



1 ELEVATION SCALE 1:20



Safety signs with lifebuoy



Reference photos

(Wan Chai Waterfront Promenade, East Coast Park Precinct)

Thank You!



ATKINS

Member of the SNC-Lavalin Group