

Task Force on Kai Tak Harbourfront Development

For information
on 14 January 2014

TFKT/01/2014

Kai Tak Development Progress Report as of December 2013

PURPOSE

This paper provides an overview of the latest progress of Kai Tak Development (KTD).

BACKGROUND

2. KTD, covering an area of over 320 hectares, is a mega-sized and highly complex development project in the urban area offering a unique opportunity for transforming the ex-airport site for the future growth of Hong Kong, and at the same time providing an impetus for stimulating regeneration of the adjoining older districts. The blue print for KTD was formulated with extensive public engagement from 2004 to 2006 and our vision is to develop KTD into “a distinguished, vibrant, attractive and people-oriented community by the Victoria Harbour”. KTD also forms part of the Energizing Kowloon East initiative of transforming the industrial areas at Kowloon Bay and Kwun Tong together with KTD into an alternative Central Business District.

3. A master plan was drawn up in early 2009¹ for implementation of KTD projects in a co-ordinated and progressive manner whilst taking into consideration their relative priorities and readiness to proceed.

¹ Please refer to Legislative Council paper No. CB(1)570/08-09(03) for discussion at the Panel on Development on 20 January 2009.

Task Force on Kai Tak Harbourfront Development

TFKT/01/2014

CURRENT SITUATION

4. The updated programme chart and the major KTD projects location plan are at **Annex A** and **Annex B** respectively. The following are highlights of the latest progress -

Projects Completed or Approaching Completion in 2013

5. At the former south apron and runway areas, advance infrastructure works including Shing Cheong Road and Shing Fung Road leading to the Kai Tak Cruise Terminal (KTCT) were completed for public use in May 2013. The KTCT building and its first berth, as well as the Kai Tak Fire Station cum ambulance depot at the junction of Cheung Yip Street and Hoi Bun Road, were commissioned in June 2013. The landscaped deck on top of KTCT building was open to public in October 2013. The first section of the Runway Park Phase 1 was completed in end 2013 with overall target completion date in early 2014.

6. At the north apron area, Stage 1 infrastructure works and new roads were substantially completed in May 2013 to support the public rental housing (PRH) comprising Kai Ching Estate and Tak Long Estate, which has started population intake by phases since July 2013. Other projects including two sewage pumping stations at the north apron area and the early phases of District Cooling System (DCS) were also completed.

7. Under the Phase 1 improvement works to address the odour issue at Kai Tak Approach Channel (KTAC) and Kwun Tong Typhoon Shelter (KTTS), the dredging and embankment improvement works were substantially completed. The remaining bioremediation works are on-going for staged completion in 2014. With progressive completion of drainage and sewerage improvement works in the hinterland of KTD, recent site surveys show that the odour problem at KTAC and KTTS is

Task Force on Kai Tak Harbourfront Development

TFKT/01/2014

generally under control.

Progress of Major Projects under Construction

8. At the north apron area, the Trade and Industry (TI) Tower commenced construction in January 2012 for completion by April 2015. The construction works of Shatin to Central Link in Kai Tak commenced in August 2012 for completion by 2018. Two primary schools adjacent to the PRH development commenced construction in November 2013 for completion by September 2015. For the supporting infrastructure, we aim to complete the Stage 2 infrastructure works in 2015 serving the residential sites in the Grid Neighbourhood east of Kai Tak River. We started in July 2013 the Stage 3A infrastructure works serving development sites near San Po Kong and enhancing connectivity with San Po Kong for completion by mid-2017. Stage 4 infrastructure works serving six housing sites of the Grid Neighbourhood west of Kai Tak River commenced in September 2013. Upon its completion by end 2016, connectivity between To Kwa Wan and Kowloon Bay will be enhanced. The upgrading and reconstruction works for the section of Kai Tak Nullah within KTD started in January 2013 for completion by phases between 2016 and 2018.

9. At the south apron area, construction of the Centre of Excellence in Paediatrics (CEP) commenced in August 2013 for completion in June 2017. The construction of Kwun Tong Promenade Stage 2 started in February 2013 for completion by end 2014.

10. Works on the second berth of KTCT will be completed in 2014, to be followed by the remaining dredging works planned for commencement in late 2014 upon diversion of the submarine gas mains. The construction of DCS Phase IIIA started in July 2013 for phased completion by May 2017 to facilitate timely provision of chilled water supply to the TI Tower, CEP and the

Task Force on Kai Tak Harbourfront Development

TFKT/01/2014

two primary schools adjacent to the PRH development at the north apron area.

Progress of Major Projects under Active Planning/Design

11. Invitation for tenders for the main design-and-build contract for Kowloon East Regional Headquarters and Operational Base cum Ngau Tau Kok Divisional Police Station was issued in August 2013. Subject to funding approval by the Legislative Council (LegCo), it is planned to commence the construction in mid-2014.

12. For the Multi-purpose Sports Complex (MPSC) project, the Home Affairs Bureau plans to seek funding approval for starting the pre-construction works in mid-2014. Members are invited to refer to Paper No. TFKT/03/2014 submitted to this meeting for more details.

13. Both Central Kowloon Route (CKR) and Trunk Road T2 are key projects of Route 6 essential for KTD. CKR was gazetted under the Roads (Works, Use and Compensation) Ordinance in November 2013. Trunk Road T2 project, with the Environmental Permit issued in September 2013, will be gazetted under the Roads (Works, Use and Compensation) Ordinance in 2014.

14. In the north apron area, Stage 5 infrastructure works covering new roads to the north of MPSC, Lung Tsun Stone Bridge subway across Prince Edward Road East, and renovation/modification of three existing subways enhancing connectivity with Kowloon City are under design. We plan to gazette the works in 2014.

Preservation Corridor for Lung Tsun Stone Bridge Remnants

15. We launched a design ideas competition for the

Task Force on Kai Tak Harbourfront Development

TFKT/01/2014

preservation corridor in September 2013, which met with good response. A award presentation ceremony is scheduled on 17 January 2014 followed by public exhibitions of the entries. Members have been invited to attend.

Kai Tak Fantasy (KTF)

16. KTF covers an area of about 80 hectares spanning the former runway tip in KTD, the Kwun Tong Ferry Pier Action Area and the enclosed water body between them. The Energizing Kowloon East Office launched an international ideas competition on the urban planning and design for KTF in November 2013, aiming to look for creative thoughts and design excellence and to encourage public participation in the design of facilities. Upon expiry of the registration period on 10 January 2014, it is planned to announce the results of the ideas competition in late 2014.

Environmentally Friendly Linkage System (EFLS)

17. To take forward the proposed EFLS, we completed the Stage 1 public consultation (PC) in October 2012 on the preliminary findings of the EFLS Study. We are conducting the Stage 2 PC until 4 February 2014. Members are invited to refer to Paper No. TFKT/04/2014 submitted to this meeting for more details.

Cycle Track in KTD

18. A cycle track network of about 6 kilometres was planned in KTD for leisure and recreation purposes. We will consult stakeholders on a proposed extension of cycle track network in KTD as well as the implementation and management approach. Members are invited to refer to Paper No. TFKT/06/2014 submitted to this meeting for more details.

Task Force on Kai Tak Harbourfront Development

TFKT/01/2014

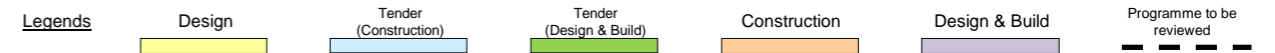
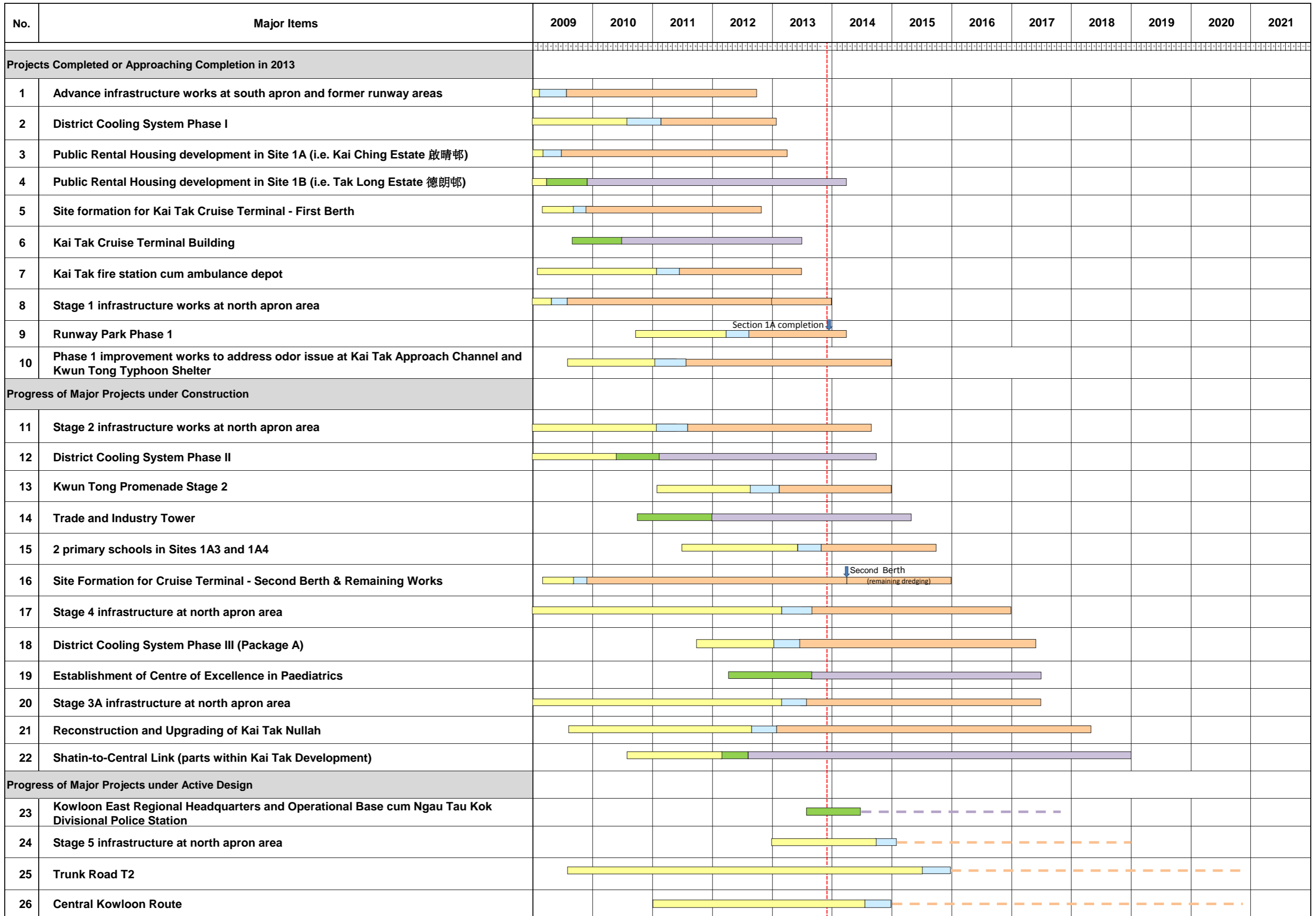
CONCLUSION

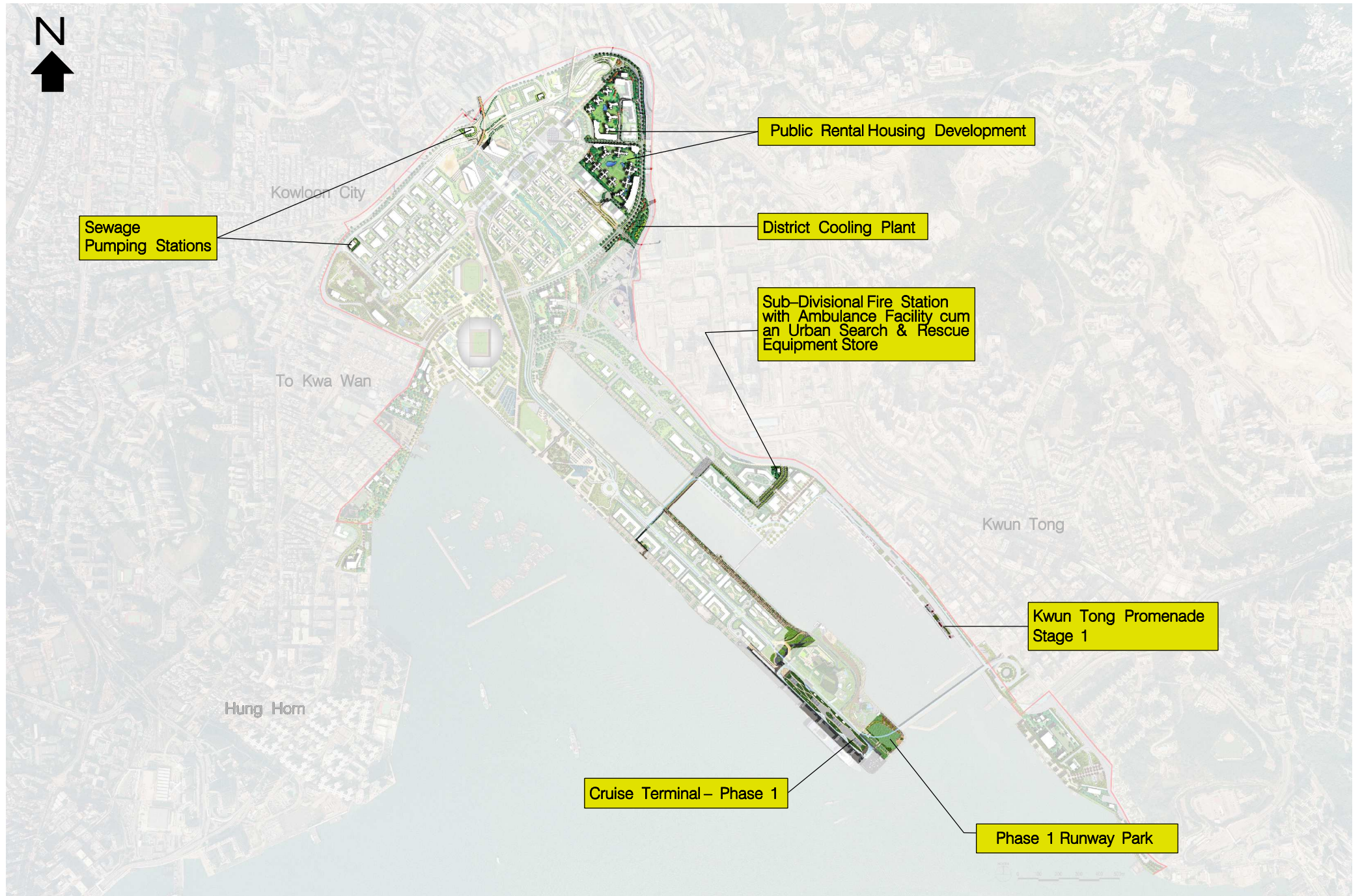
19. Members are invited to note the update on the planning and design of KTD. Advice and comments are welcome.

**Kai Tak Office, Kowloon Development Office
Civil Engineering and Development Department
January 2014**

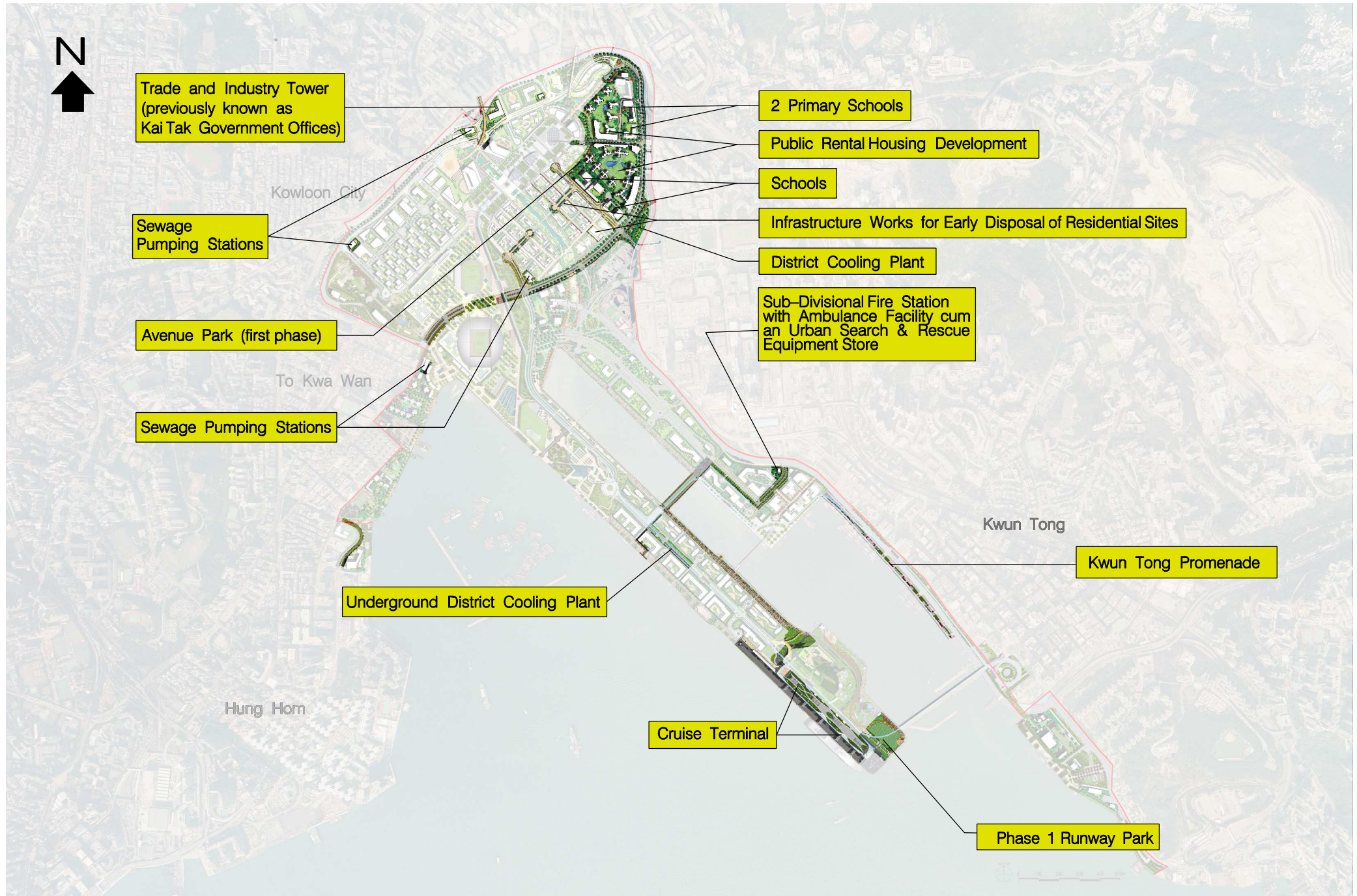
Annexes

- Annex A - Updated Programme Chart
- Annex B - Location Plan of Major KTD Projects

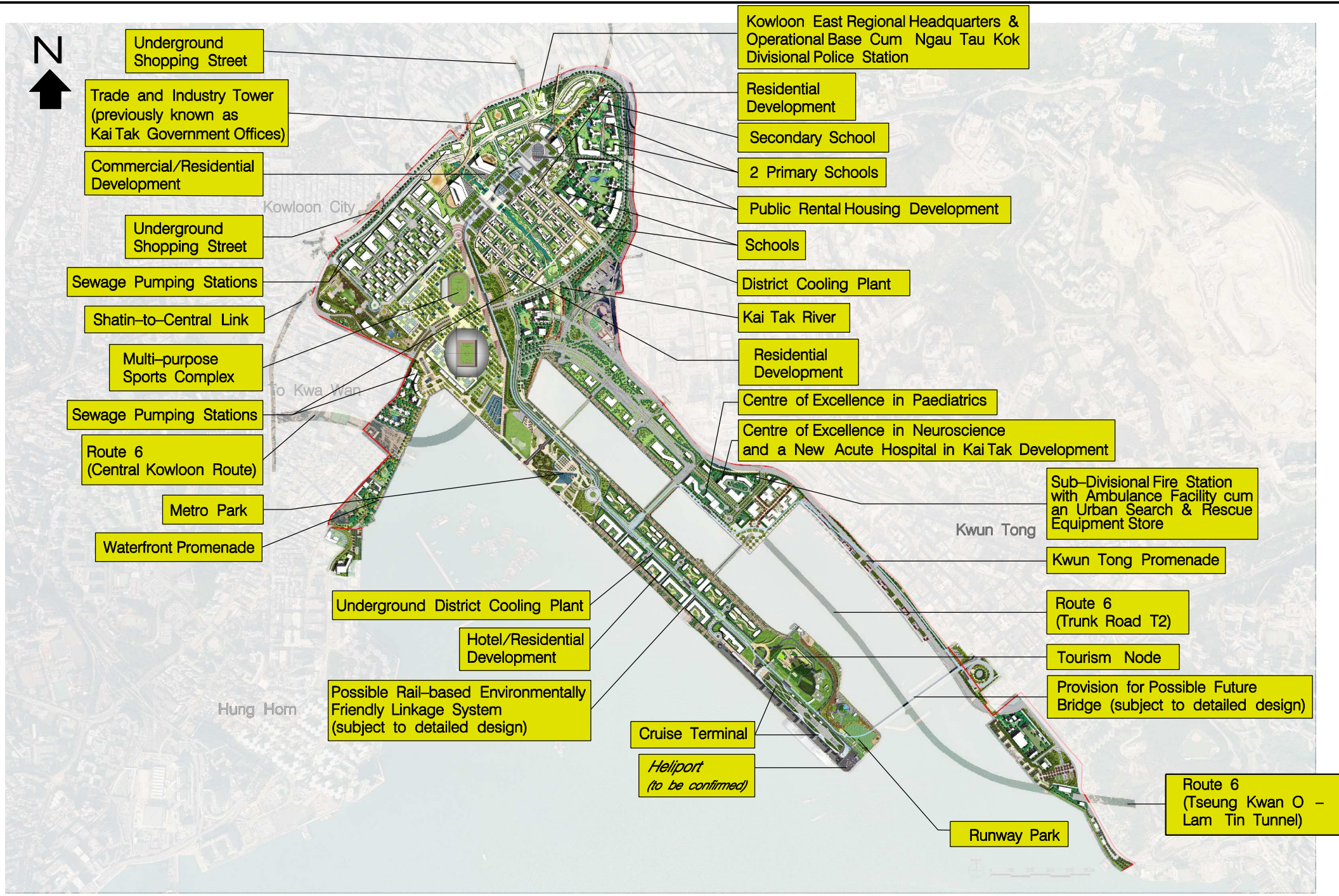




Facilities and supporting infrastructure planned for completion by 2013



Facilities and supporting infrastructure planned for completion in 2014 – 2016



Underground Shopping Street

Trade and Industry Tower (previously known as Kai Tak Government Offices)

Commercial/Residential Development

Underground Shopping Street

Sewage Pumping Stations

Shatin-to-Central Link

Multi-purpose Sports Complex

Sewage Pumping Stations

Route 6 (Central Kowloon Route)

Metro Park

Waterfront Promenade

Underground District Cooling Plant

Hotel/Residential Development

Possible Rail-based Environmentally Friendly Linkage System (subject to detailed design)

Cruise Terminal

Heliport (to be confirmed)

Runway Park

Kowloon East Regional Headquarters & Operational Base Cum Ngau Tau Kok Divisional Police Station

Residential Development

Secondary School

2 Primary Schools

Public Rental Housing Development

Schools

District Cooling Plant

Kai Tak River

Residential Development

Centre of Excellence in Paediatrics

Centre of Excellence in Neuroscience and a New Acute Hospital in Kai Tak Development

Sub-Divisional Fire Station with Ambulance Facility cum an Urban Search & Rescue Equipment Store

Kwun Tong Promenade

Route 6 (Trunk Road T2)

Tourism Node

Provision for Possible Future Bridge (subject to detailed design)

Route 6 (Tseung Kwan O - Lam Tin Tunnel)

Facilities and supporting infrastructure planned for completion in 2017 and beyond