

Task Force on Kai Tak Harbourfront Development

For information
on 5 February 2013

TFKT/01/2013

Kai Tak Development Progress Report as of January 2013

PURPOSE

This paper provides an overview of the latest progress of Kai Tak Development (KTD).

BACKGROUND

2. The KTD is a huge and highly complex development project spanning a total planning area of over 320 hectares and covering the ex-airport site together with the adjoining hinterland districts of Kowloon City, Wong Tai Sin and Kwun Tong. It is our vision to develop the KTD into “a distinguished, vibrant, attractive and people-oriented community by the Victoria Harbour”.

CURRENT SITUATION

3. The updated programme chart is at **Annex A**. The following are highlights of the latest progress -

Projects Planned for Completion in 2013

4. Construction of key KTD projects targeted for completion in 2013 is progressing on schedule. These projects include the Kai Tak Cruise Terminal (KTCT) building and the first berth, installation of a new radar on top of the KTCT building, public rental housing development in the north apron area (i.e. Kai Ching Estate (啟晴邨) and Tak Long Estate (德朗邨)), early phases of the District Cooling System (DCS), a fire station cum ambulance depot at the south apron area, Runway Park Phase 1 and the associated

Task Force on Kai Tak Harbourfront Development

For information
on 5 February 2013

TFKT/01/2013

supporting infrastructure. A location plan showing the above projects is at **Annex B**.

Infrastructure Works at the North Apron Area

5. The public rental housing development will be completed by phases from Q2 to Q4 of 2013. New roads and associated infrastructure works are being completed under the stage 1 infrastructure works to tie in with the population intake of the public rental housing. In accordance with the KTD implementation programme, we plan to take forward the construction of the stage 3A and stage 4 infrastructure works to facilitate early land disposal for various developments by phases. Subject to the funding approval, these infrastructure works will start in the second half of 2013.

Environmentally Friendly Linkage System (EFLS)

6. The Stage 1 public engagement exercise (PEE) was completed in October 2012. Views on the preliminary findings of the EFLS Study were collected from this Task Force, the Panel on Development, the Kowloon City, Wong Tai Sin and Kwun Tong District Councils, professional institutes, transport operators, various focus/interest groups and two PEE workshops. Further assessments are being undertaken to address major concerns received in Stage 1 PEE. We plan to launch Stage 2 PEE in mid-2013 with a view to building a public consensus for taking forward the EFLS.

Kwun Tong Waterfront Promenade

7. Stage 2 of the project will involve the footprint of the Kwun Tong Public Cargo Working Area, which was closed down in August 2011. The construction contract started on 25 January 2013 with a view to completing the project in end 2014.

Task Force on Kai Tak Harbourfront Development

For information
on 5 February 2013

TFKT/01/2013

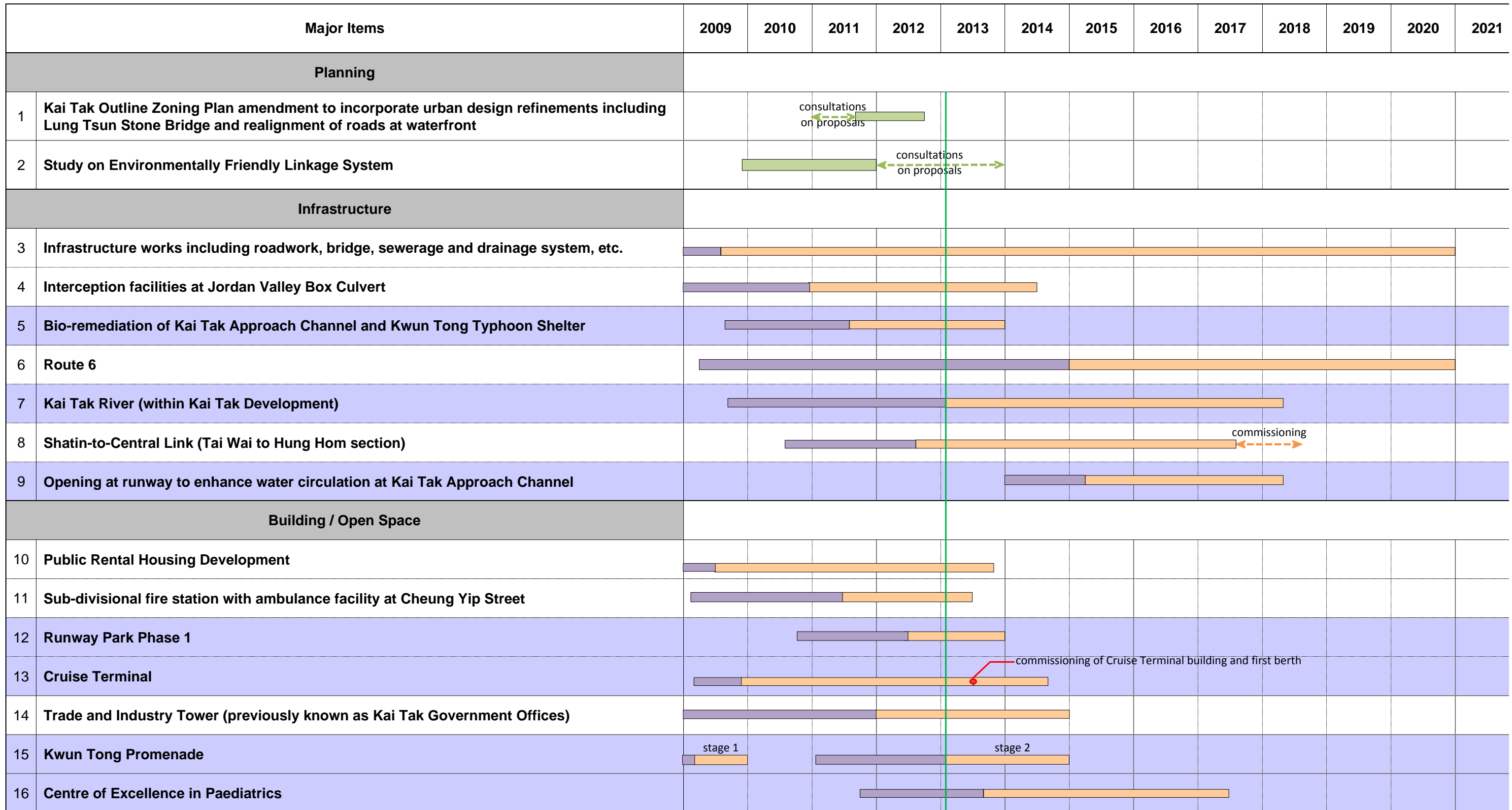
Kai Tak River

8. Tender exercise of reconstruction and upgrading of Kai Tak River¹ has been completed. The construction contract started on 31 January 2013 for completion by phases starting from 2016.

**Civil Engineering and Development Department
February 2013**

¹ Contract No. KL/2011/01 “Kai Tak Development - Reconstruction and Upgrading of Kai Tak Nullah”

Task Force on Kai Tak Harbourfront Development Kai Tak Development - Programme Chart (as of January 2013)



Note:
The above programme is tentative and shall be subject to review due to future planning and design, and approval such as for securing funding.

Legend

Waterfront Projects

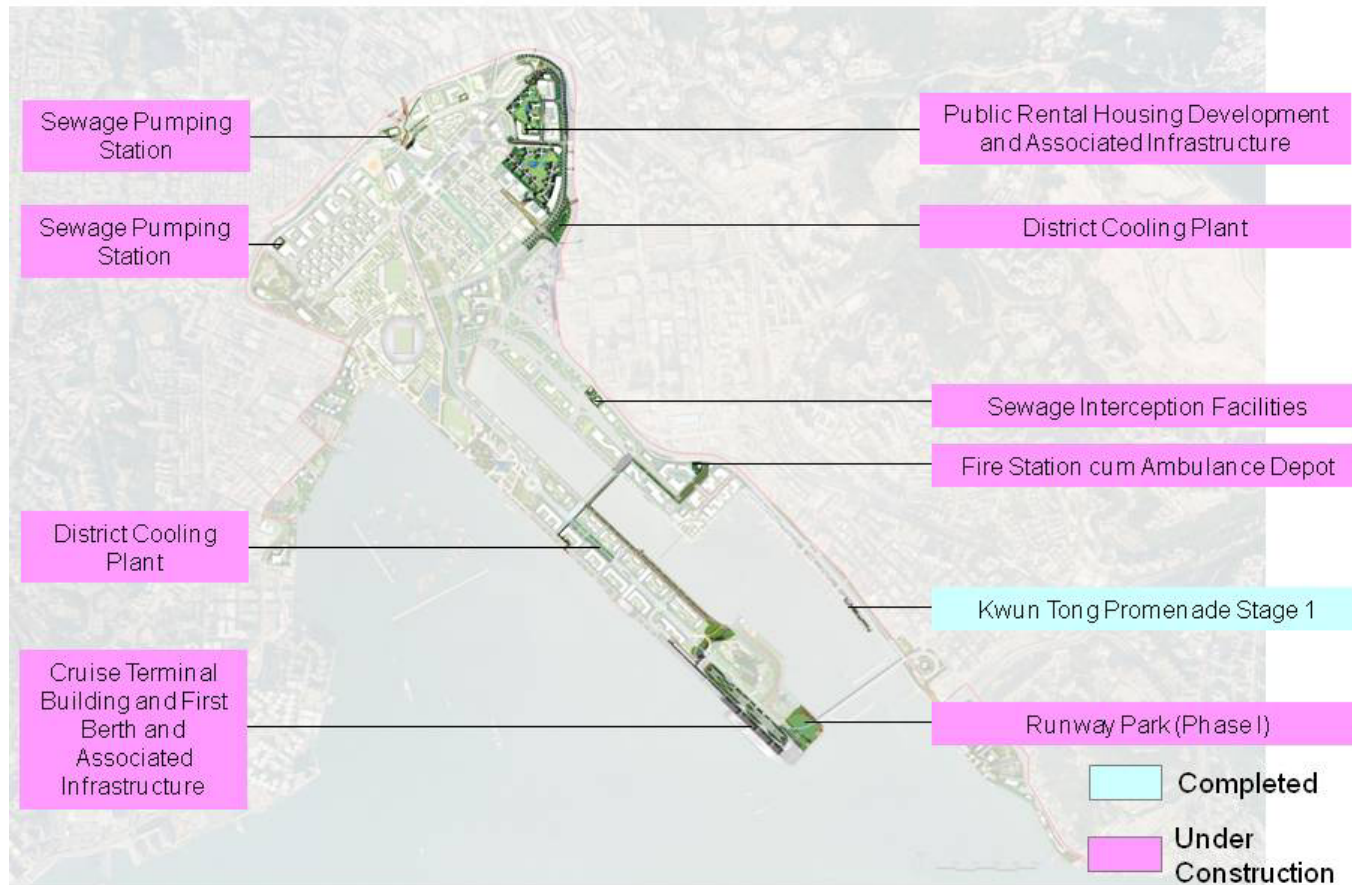
Planning Activities

Design and Tender

Construction

Task Force on Kai Tak Harbourfront Development

Annex B



Projects Planned for Completion in 2013
(Item Nos. 4, 10 to 13 & 15 of Programme Chart)