

Amendments to the Draft South West Kowloon Outline Zoning Plan No. S/K20/26 修訂《西南九龍分區計劃大綱草圖 編號S/K20/26》

Harbourfront Commission
Task Force on Harbourfront Developments in
Kowloon, Tsuen Wan and Kwai Tsing
海濱事務委員會
九龍、荃灣及葵青海濱發展專責小組
18.4.2012

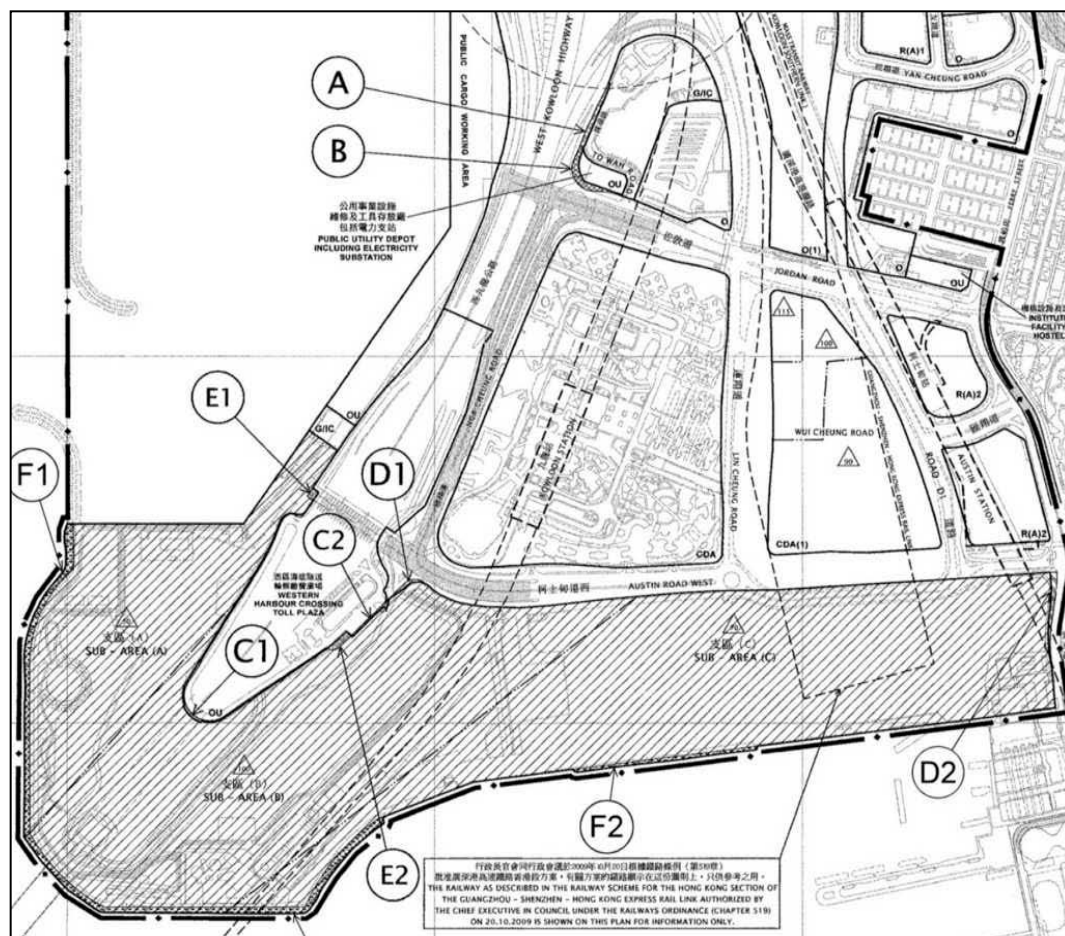


規劃署

Planning Department

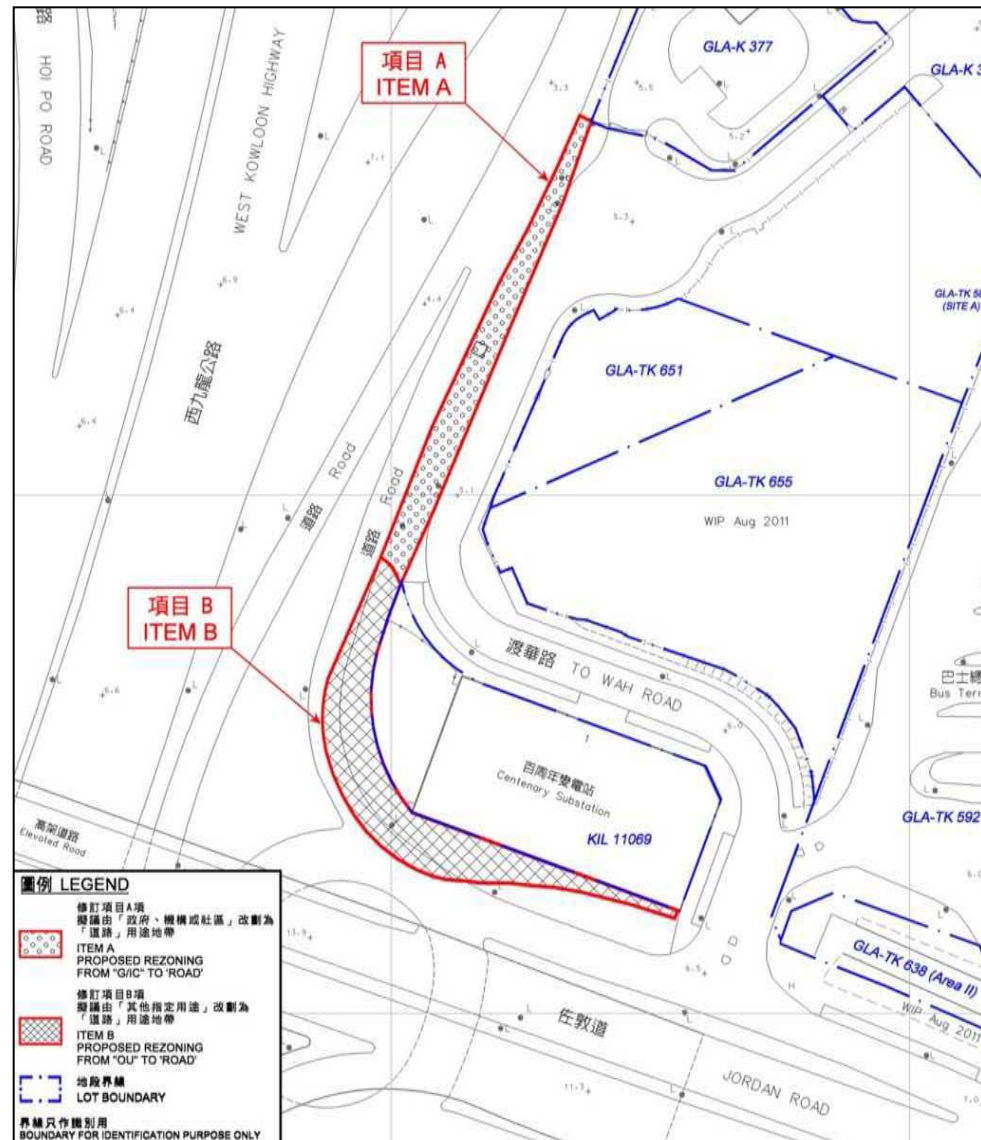
Amendments to the OZP 圖則修訂

- Reflecting existing as-built condition of the slip road of Lin Cheung Road and Jordan Road
- OZP zoning boundary adjustments for West Kowloon Cultural District
- 為反映連翔道連接路與佐敦道現時發展完成後的情況
- 修訂在分區計劃大綱圖上西九文化區用途地帶的界線



Amendment Item A and B A及B項

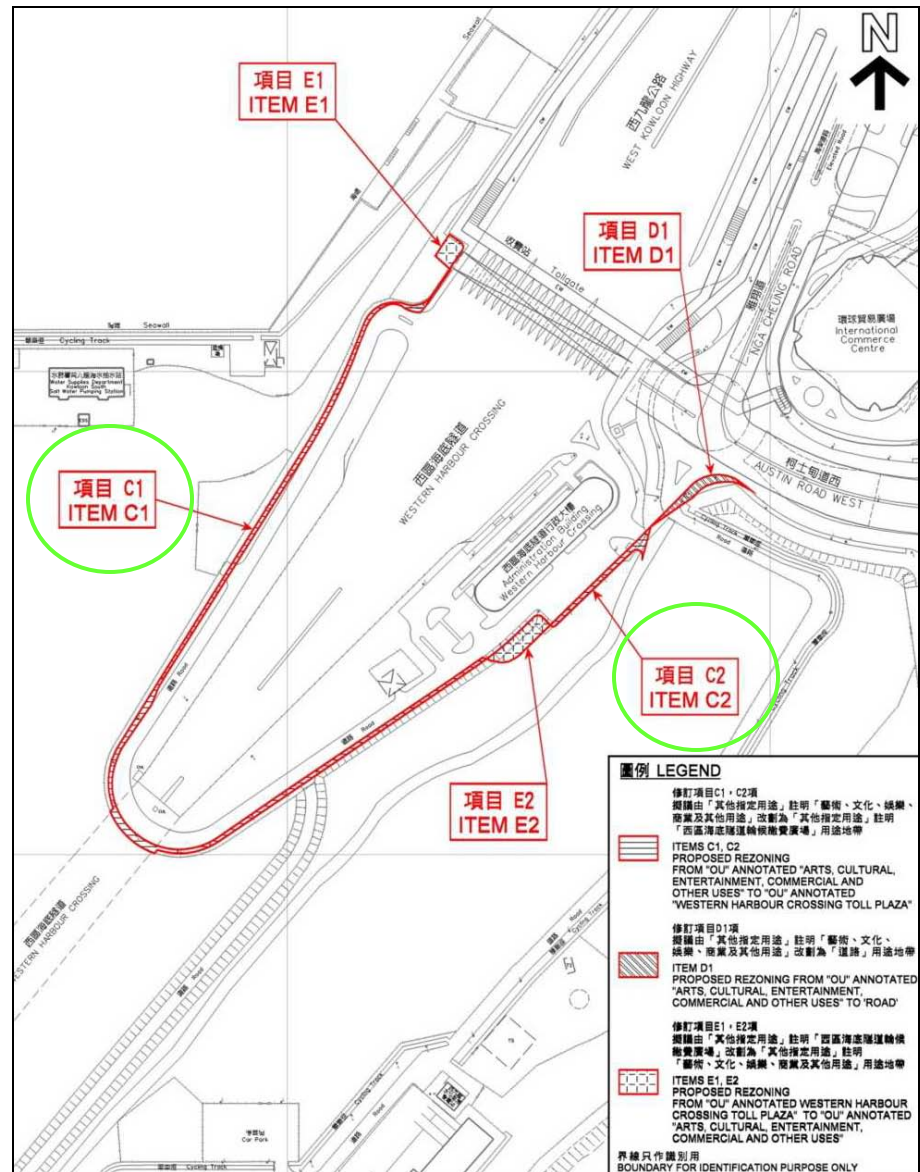
- Rezoning of a strip of land to the west of To Wah Road from “G/IC” to an area shown as ‘Road’
- Rezoning of a strip of land to the southwest of the electricity substation at To Wah Road from “OU” annotated “Public Utility Depot including Electricity Substation” to an area shown as ‘Road’
- 把渡華路以西的一塊狹長土地由「政府、機構或社區」地帶改劃為顯示為「道路」的地方
- 把位於渡華路的電力支站西南面的一塊狹長土地由「其他指定用途」註明「公用事業設施維修及工具存放廠包括電力支站」地帶改劃為顯示為「道路」的地方



Amendment Item C1 and C2

C1及C2項

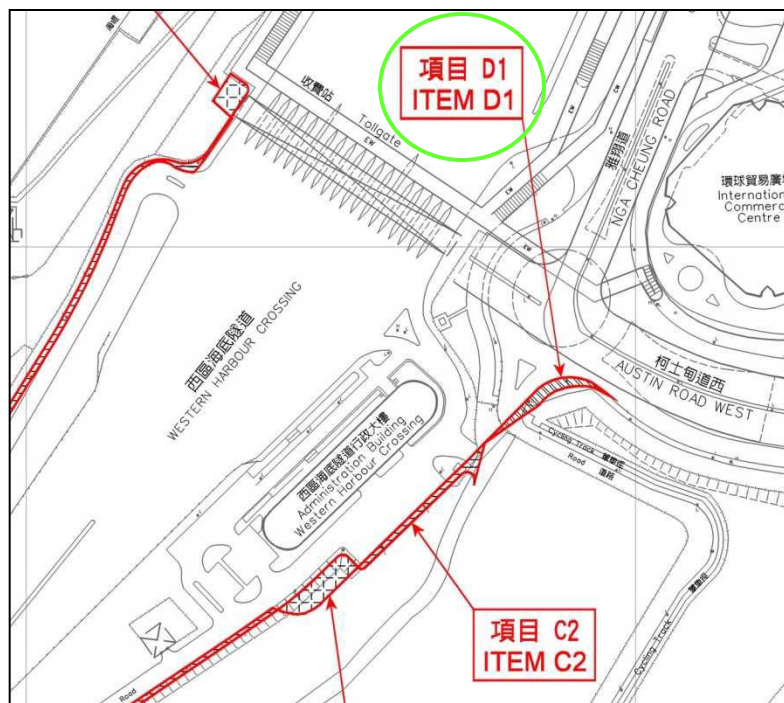
- **Rezoning of two strips of land abutting the boundary of the Western Harbour Crossing (WHC) Toll Plaza from “OU(Arts, Cultural, Entertainment, Commercial and Other Uses)” to “OU(Western Harbour Crossing Toll Plaza)”**
- 把緊連西區海底隧道繳費廣場界線的兩塊狹長土地由「其他指定用途」註明「藝術、文化、娛樂、商業及其他用途」地帶改劃為「其他指定用途」註明「西區海底隧道繳費廣場」地帶



Amendment Item D1 and D2

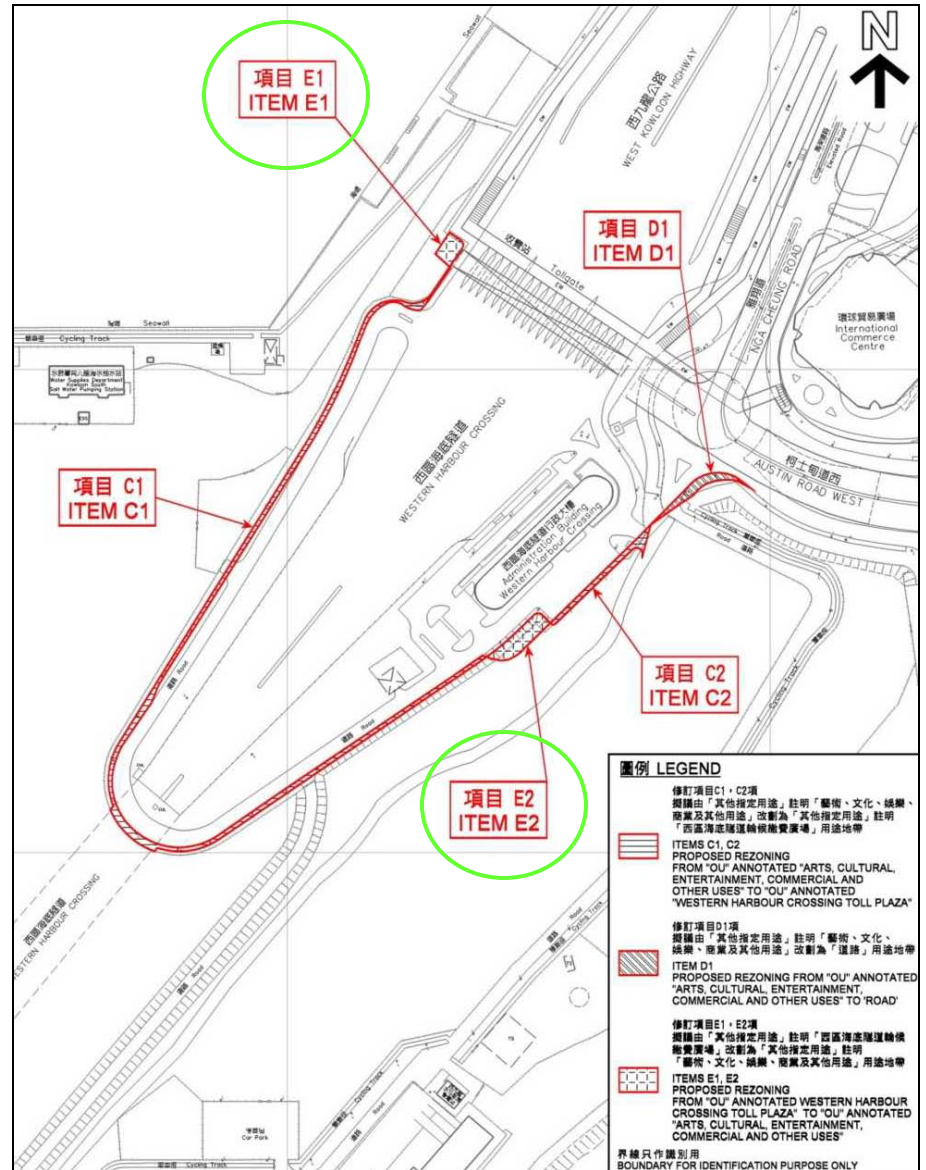
D1及D2項

- **Rezoning of two strips of land along Austin Road West (Item D1) and Canton Road (Item D2) from “OU(Arts, Cultural, Entertainment, Commercial and Other Uses)” to areas shown as ‘Road’**
- 把位於柯士甸道西及廣東道的兩塊狹長土地由「其他指定用途」註明「藝術、文化、娛樂、商業及其他用途」地帶改劃為顯示為「道路」的地方



Amendment Item E1 and E2 E1及E2項

- **Rezoning of two strips of land to the southeast and northwest of WHC Toll Plaza from “OU(WHC Toll Plaza)” to areas shown as ‘West Kowloon Cultural District Development Plan Area’**
- 把西區海底隧道繳費廣場東南面及西北面的兩塊土地由「其他指定用途」註明「西區海底隧道繳費廣場」地帶改劃為顯示為「西九文化區發展圖則範圍」的地方

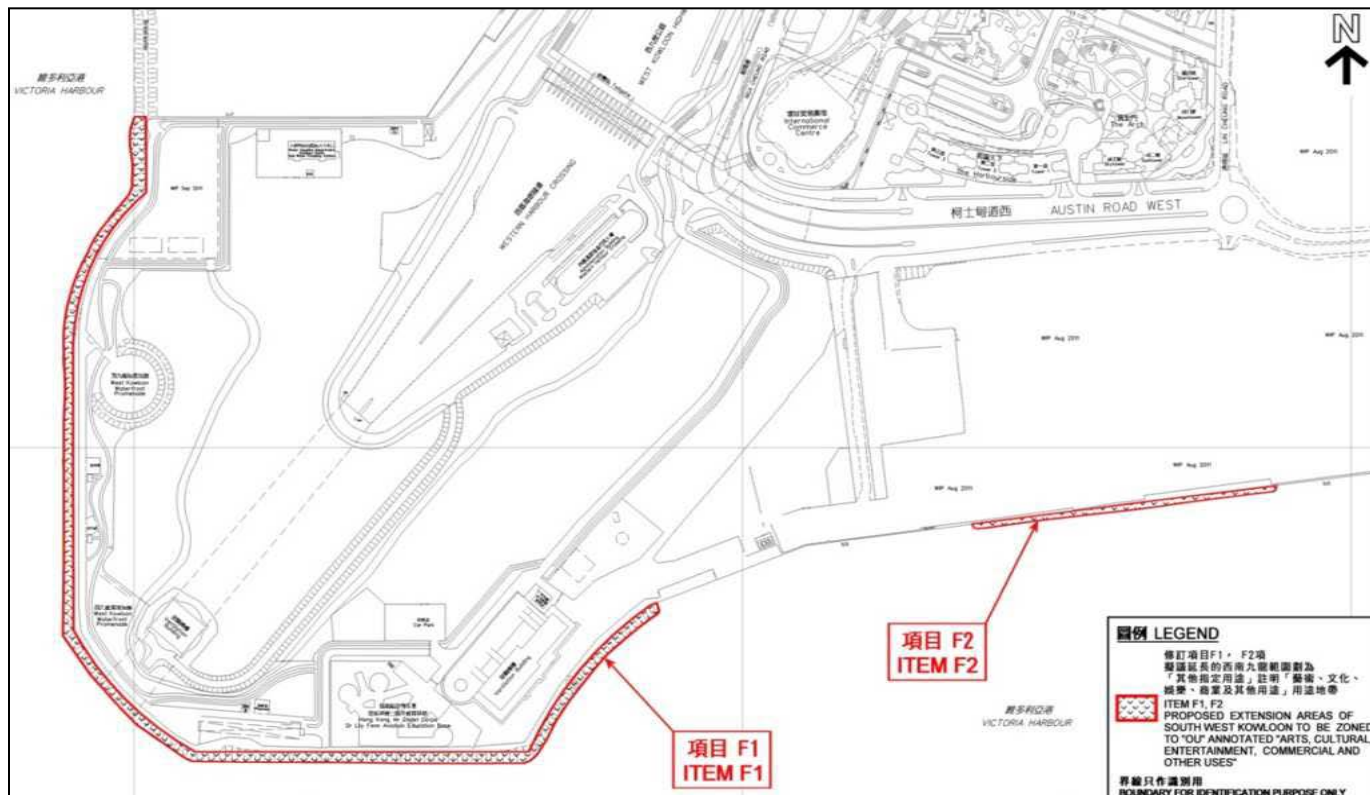


Amendment Item F1 and F2

F 1及 F 2項

- Inclusion of two strips of the area of the existing seawall along the waterfront into the area shown as 'West Kowloon Cultural District Development Plan Area'
- The land area of WKCD after the above adjustments is about 40.91 ha, which is a slight increase (8,200 m², or 2.05%) from about 40.09 ha on the previous OZP.

- 把沿海現有的海堤範圍納入顯示為「西九文化區發展圖則範圍」的地方內
- 經過以上的調整後，西九文化區的土地範圍比較之前的面積（約40.09公頃）會輕微增加（約8,200平方米或2.05%）至約40.91公頃



Amendment Item G

G項

- **Revision to the Chinese annotation of the “OU” zone for the Western Harbour Crossing Toll Plaza from 「西區海底隧道輪候繳費廣場」 to 「西區海底隧道繳費廣場」**
- 修訂「其他指定用途」地帶作西區海底隧道繳費廣場用途的註明，把「西區海底隧道輪候繳費廣場」改為「西區海底隧道繳費廣場」

Amendments to the Notes of the OZP

- **Opportunity has also been taken to make technical amendments to update the Notes to be consistent with the provisions recently incorporated into various OZPs and in accordance with the Master Schedule of Notes.**
- 大綱圖的註釋亦因應近期其他大綱圖的修訂及法定圖則註釋總表作技術性的修訂。

Public Inspection Period 公眾查閱期

- **The two-month public inspection period is from 30 March to 30 May 2012**
- 兩個月的公眾查閱期為2012年3月30日至5月30日

Thank You
多謝