

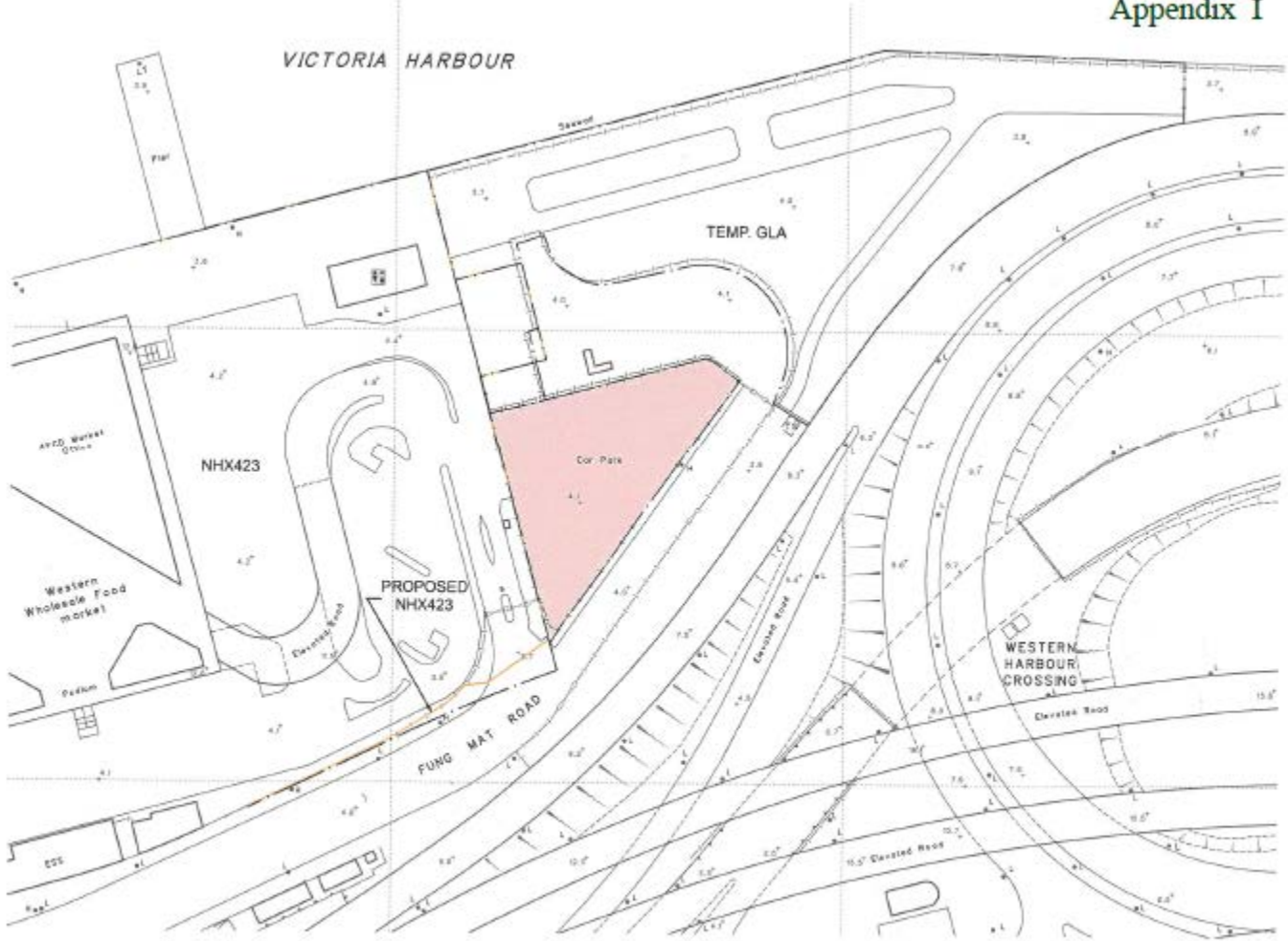
# Paper No. TFHK/02/2018

**Proposed Short Term Tenancy  
for Fee-paying Public Carpark  
Government Land at Fung Mat Road,  
Sai Ying Pun, Hong Kong**

LOCATION



SCALE 1:20 000



COLOURED PINK AREA 1 610 SQUARE METRES (ABOUT)

SCALE 1:1 000



DRAFT

# Tenancy Particulars

<b>Site Area</b>	:	About 1,610 m <sup>2</sup>
<b>Use</b>	:	A fee-paying public carpark for the parking of light goods vehicles, medium goods vehicles, heavy goods vehicles (including goods vehicle with valid permits issued by the Gas Authority under the Gas Safety Ordinance (Chapter 51) or any enactment amending the same designed and constructed, or adapted, primarily for the conveyance of liquefied petroleum gas (LPG) cylinders on roads (hereinafter referred to as the “LPG cylinder wagons”)), light buses and buses which are currently licensed under the provisions of the Road Traffic Ordinance (Chapter 374), any regulations made thereunder and any amending legislation (excluding van-type light goods vehicles and light buses not exceeding 6.0 metres overall in length, container tractors, container trailers and container vehicles with or without tractors or trailers). The determination of the District Lands Officer of the overall length of a van-type light goods vehicle and a light bus shall be final and binding on the Tenant.
<b>Term</b>	:	1 year certain and thereafter half yearly
<b>Other Condition</b>	:	The tenant shall provide not less than 15 spaces for priority parking of LPG cylinder wagons.
<b>Termination of Tenancy</b>	:	After expiry of the first year, the STT can be terminated by either party serving a notice of not less than 6 calendar months to other to this effect.

# Need For Retendering

- Genuine parking need for commercial vehicles (CVs)
  - Goods Vehicles, Buses, Light Buses, LPG cylinder wagons
  - 31 parking spaces
  - Utilisation rate of 85%
- Demand of parking spaces of LPG cylinder wagons
- DC members support retendering proposal in general.

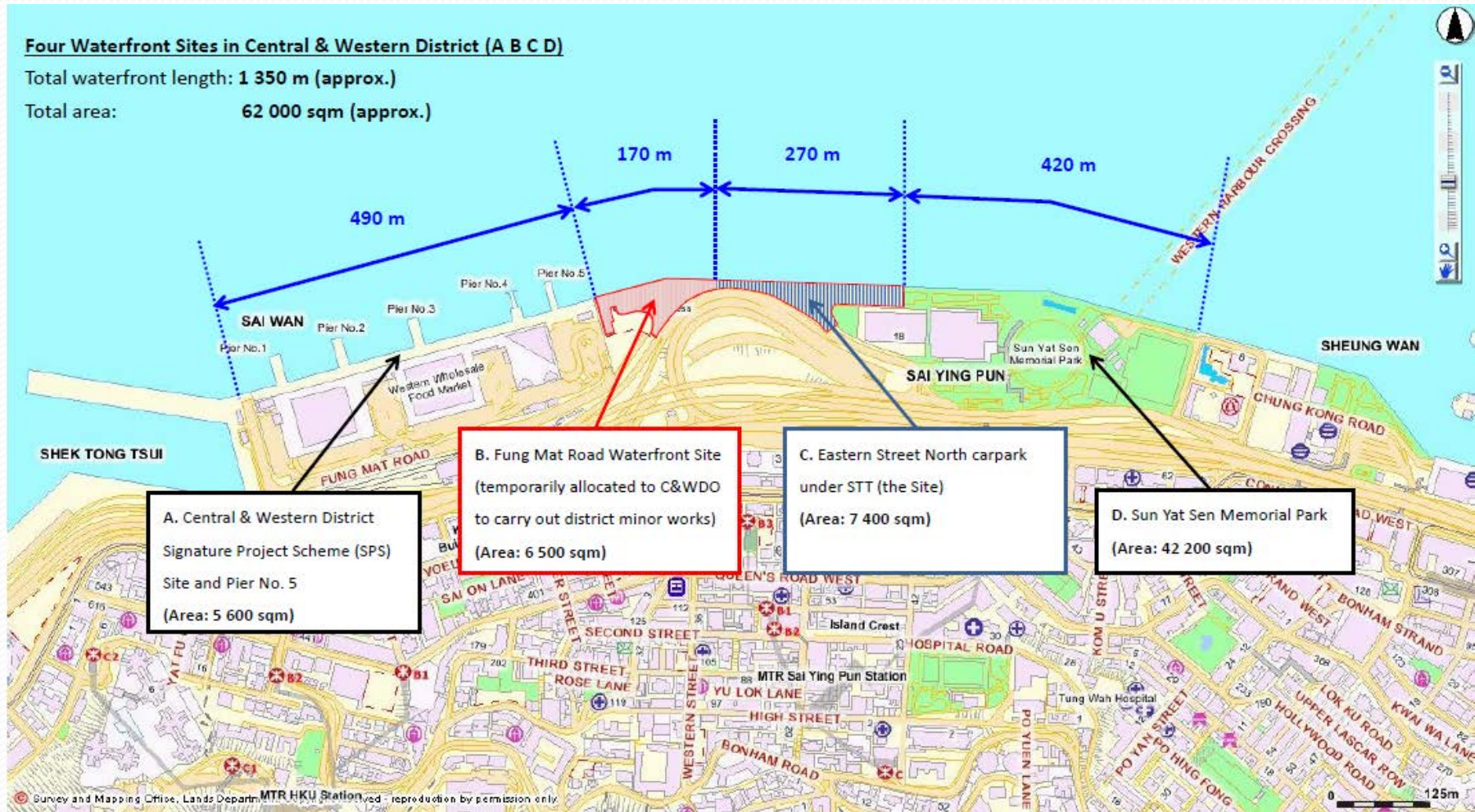
# Current Effort

- Exploring additional on-street locations for night-time parking spaces for CVs
- Including parking spaces for CVs in suitable future developments
- Studying to open up parking spaces and loading/unloading bays in suitable developments for night-time parking spaces for CVs

### Four Waterfront Sites in Central & Western District (A B C D)

Total waterfront length: 1 350 m (approx.)

Total area: 62 000 sqm (approx.)





END