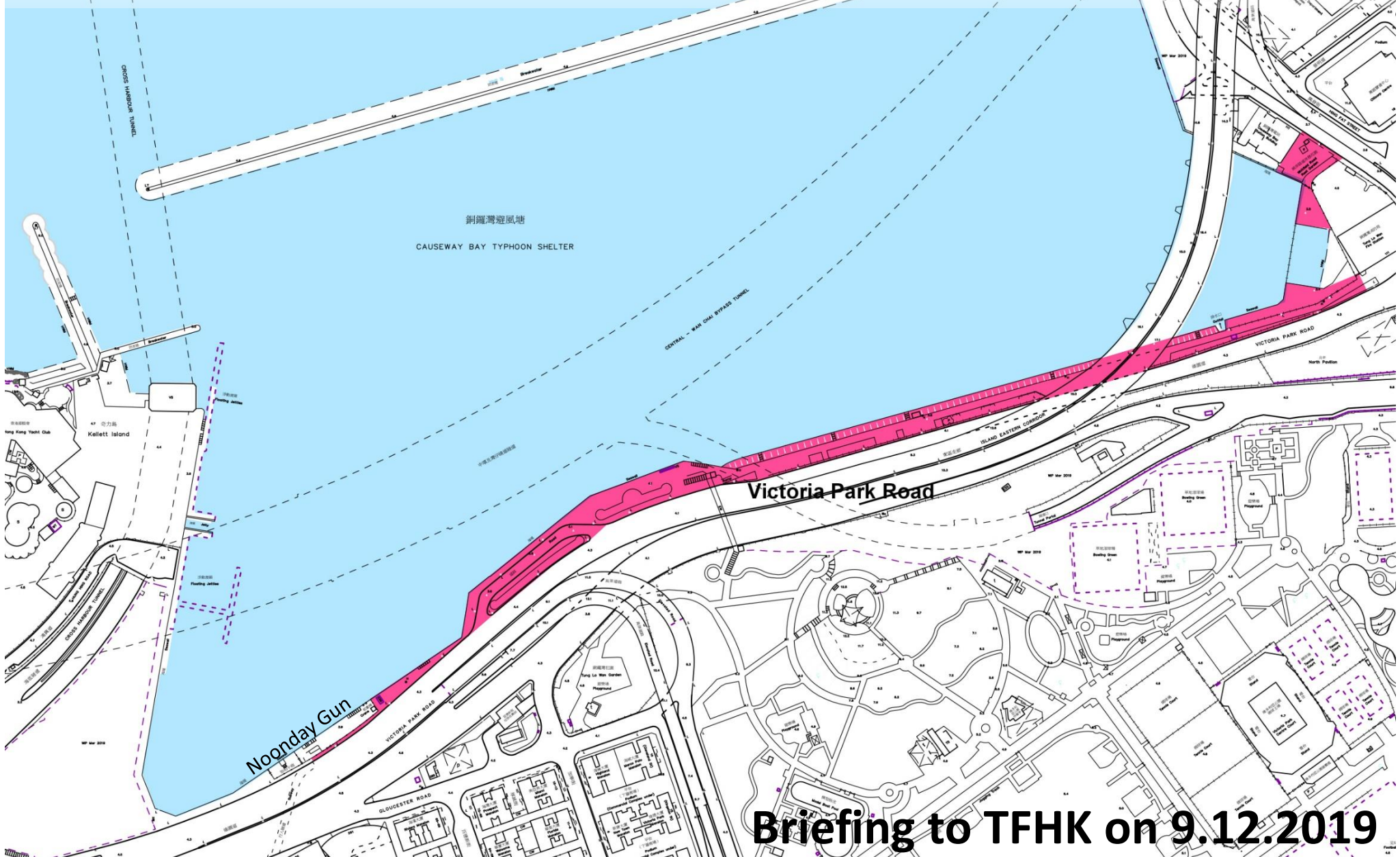


Quick-win Enhancement for Victoria Park Road Promenade



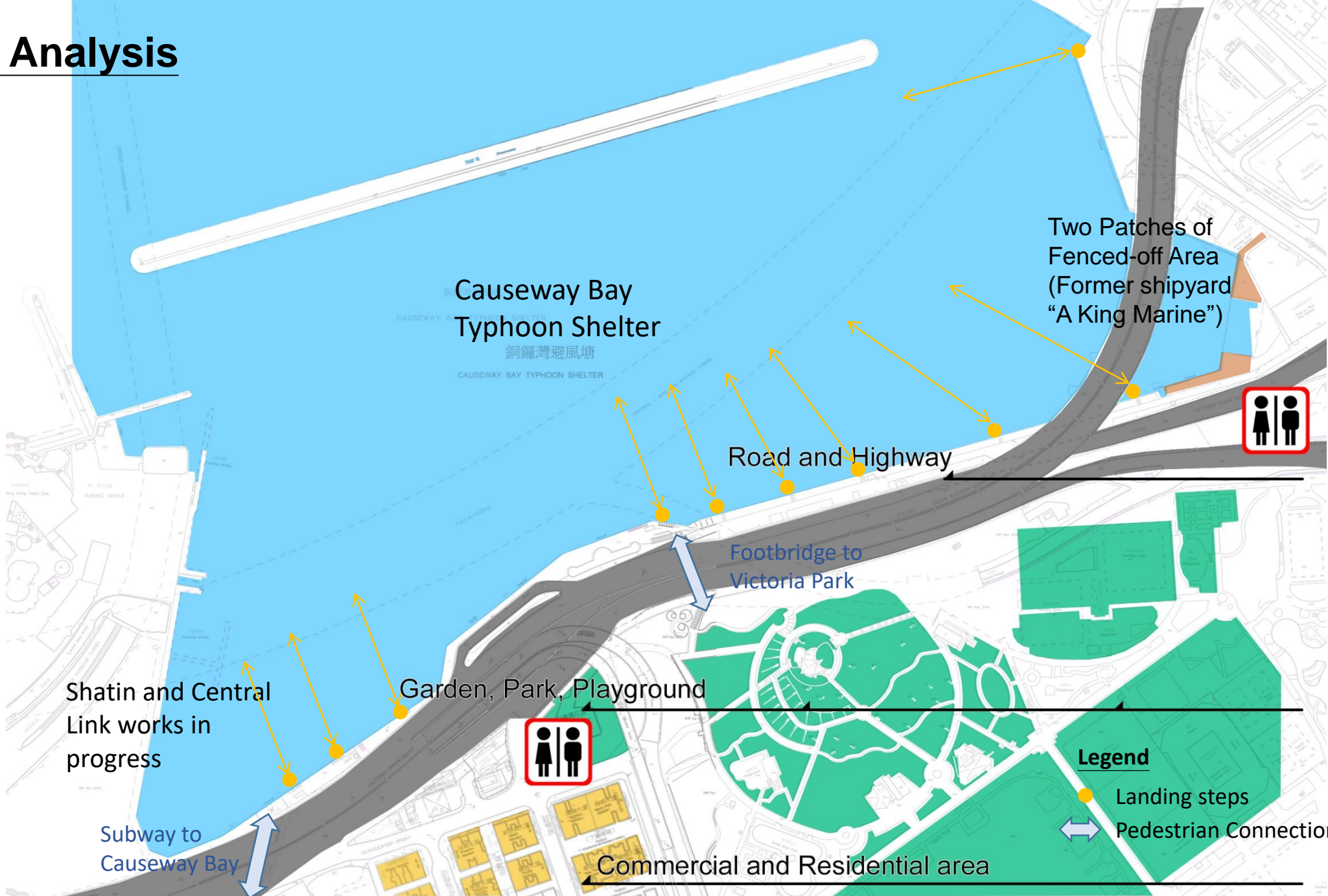
Quick-win Enhancement for Victoria Park Road Promenade



Briefing to TFHK on 9.12.2019



Site Analysis



Causeway Bay Typhoon Shelter
銅鑼灣避風塘

Two Patches of Fenced-off Area (Former shipyard "A King Marine")

Crossing at Tin Hau

Road and Highway

Footbridge to Victoria Park

Garden, Park, Playground

Shatin and Central Link works in progress

Subway to Causeway Bay

Commercial and Residential area

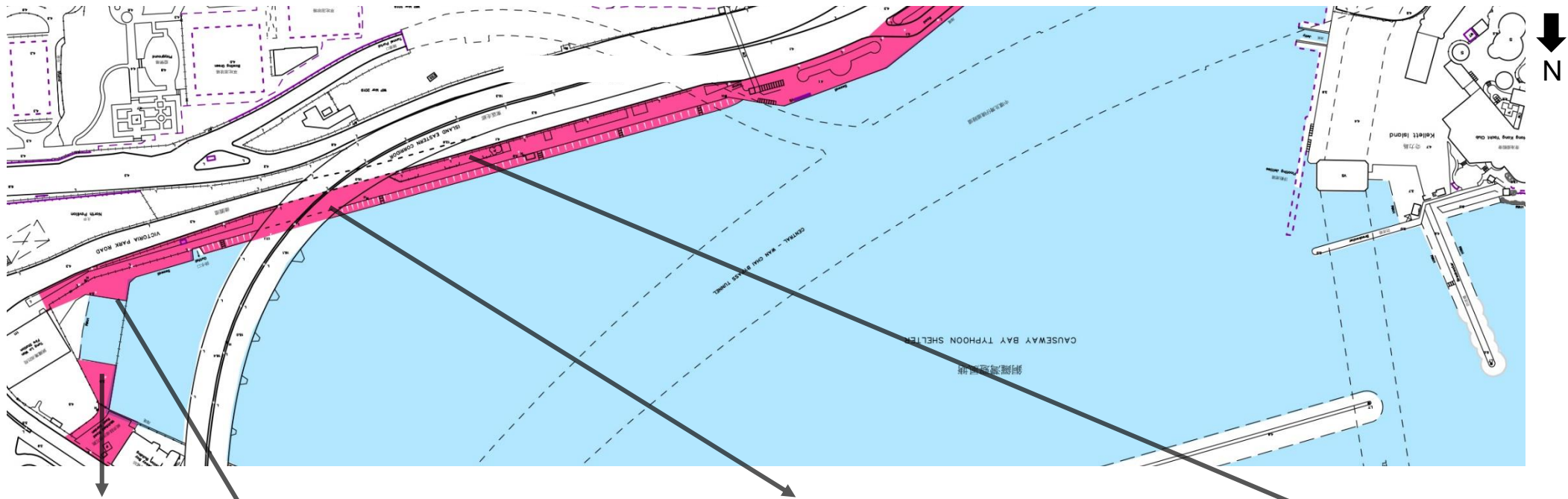
Legend

● Landing steps

↔ Pedestrian Connection



causeway bay typhoon shelter



An old banyan tree in the fenced-off area



Existing use of the under flyover area

An old classic shelter



Two Patches of Fenced-off Area (Former Shipyard "A King Marine")



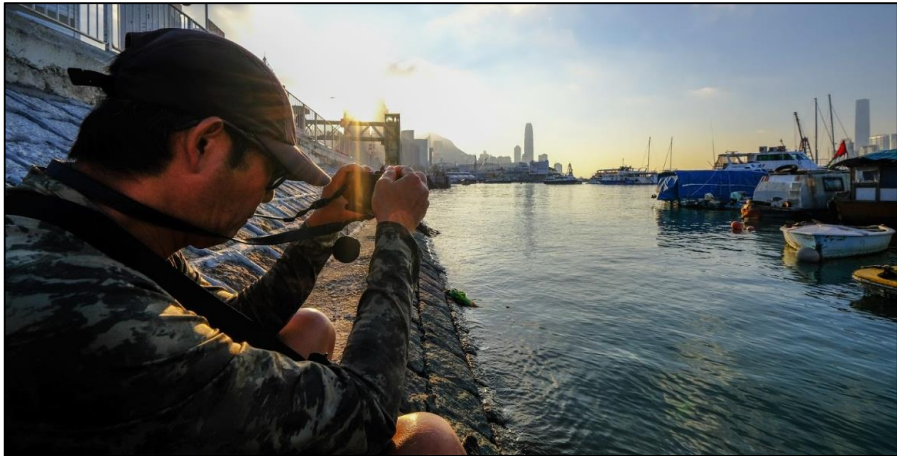
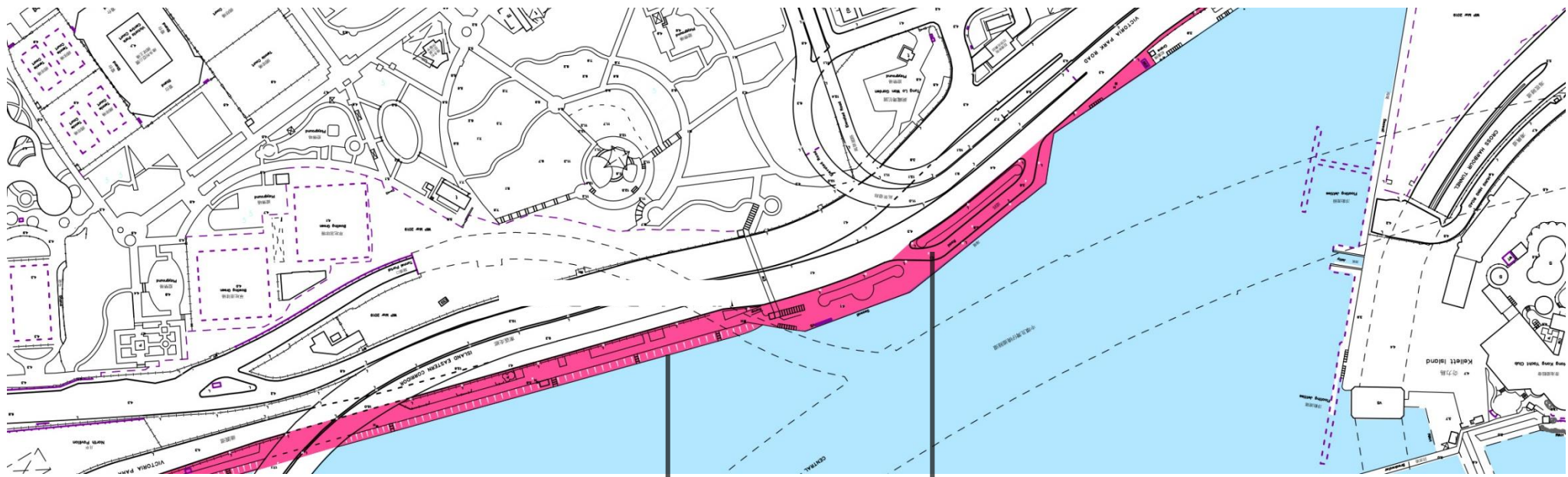


Photo 8



Existing use of landing steps

Existing seating without cover



INCREMENTAL APPROACH - QUICK WIN ALONG THE PROMENADE OF TYPHOON SHELTER

Sanpan, hemp rope...

History-respecting

Environmentally-friendly

faci**L**itate current usage

wa**T**ER-friendly



Photo 1



Photo 2



Photo 3



Recycled timber, existing railing

Victoria Park Road

Tin Hau Temple

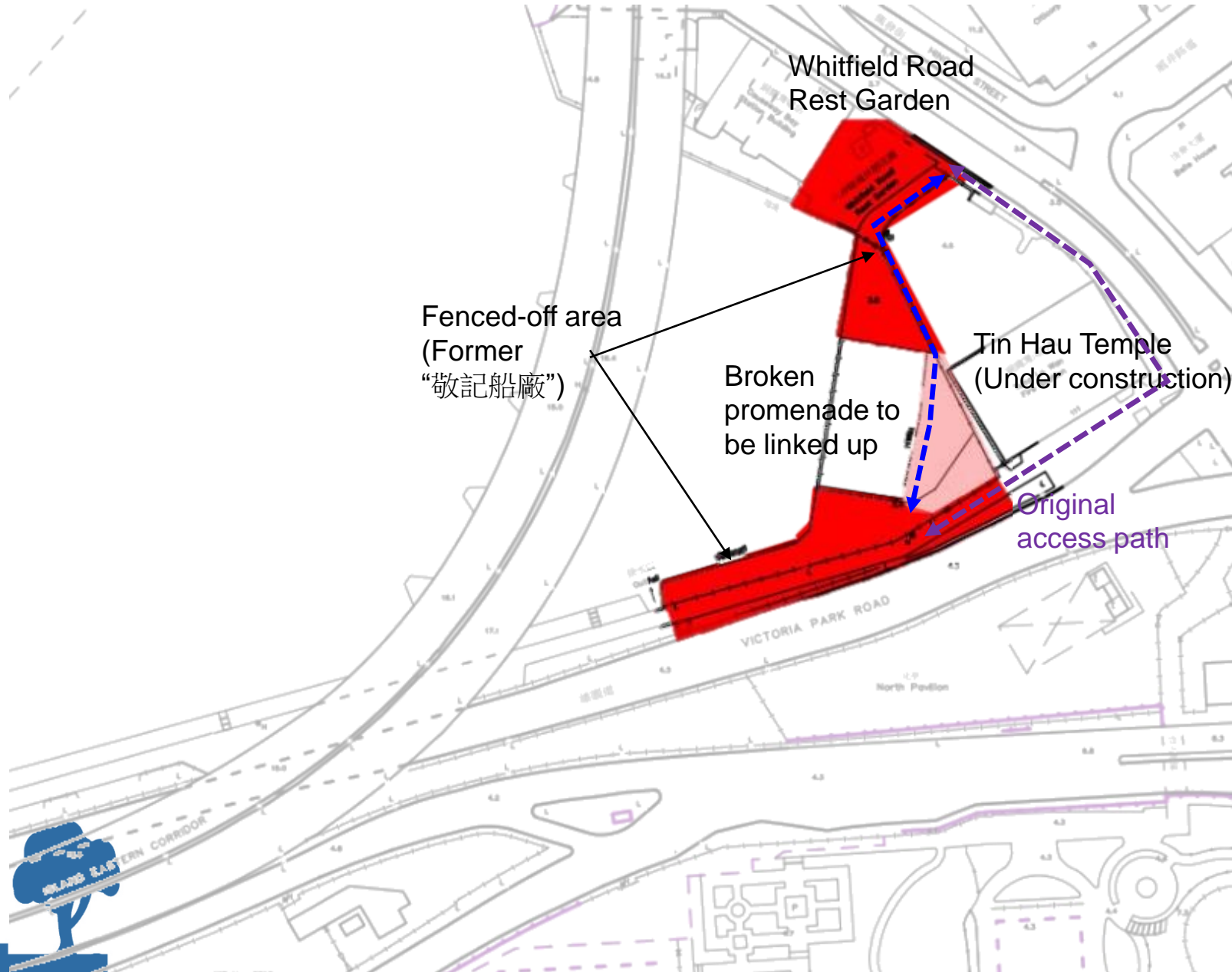


Design Concept

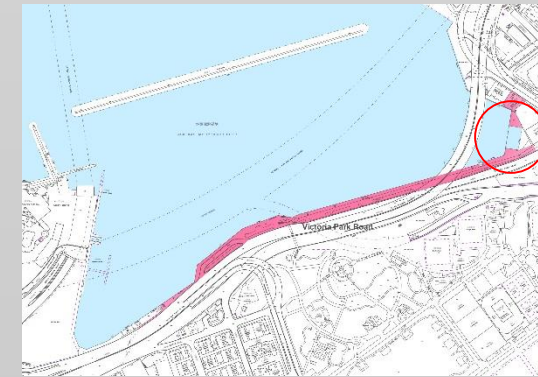
*Detail subject to design development



1. Fence-off area and Broken promenade



causeway bay typhoon shelter



Reference image/ tree/ seating



Photo 4

From **PAST** to **PRESENT**



An old Banyan Tree



PRESENT condition



An inaccessible fence-off area





An outdoor sunken seating area
causeway bay typhoon shelter

PROPOSAL [1]

PAST



Shipyard "A King Marine"

Photo 5

PRESENT



Tin Hau Temple under construction
[By Tin Hau Temple Development
(三角天后平安堂有限公司)]

History-respecting

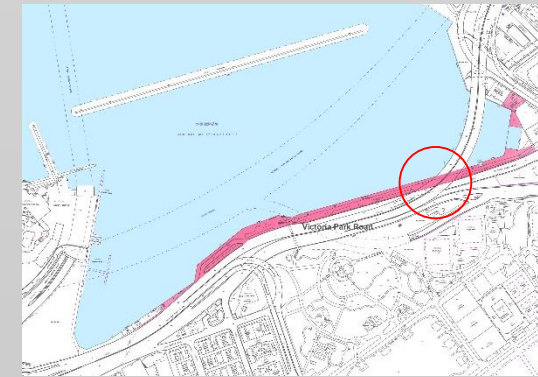
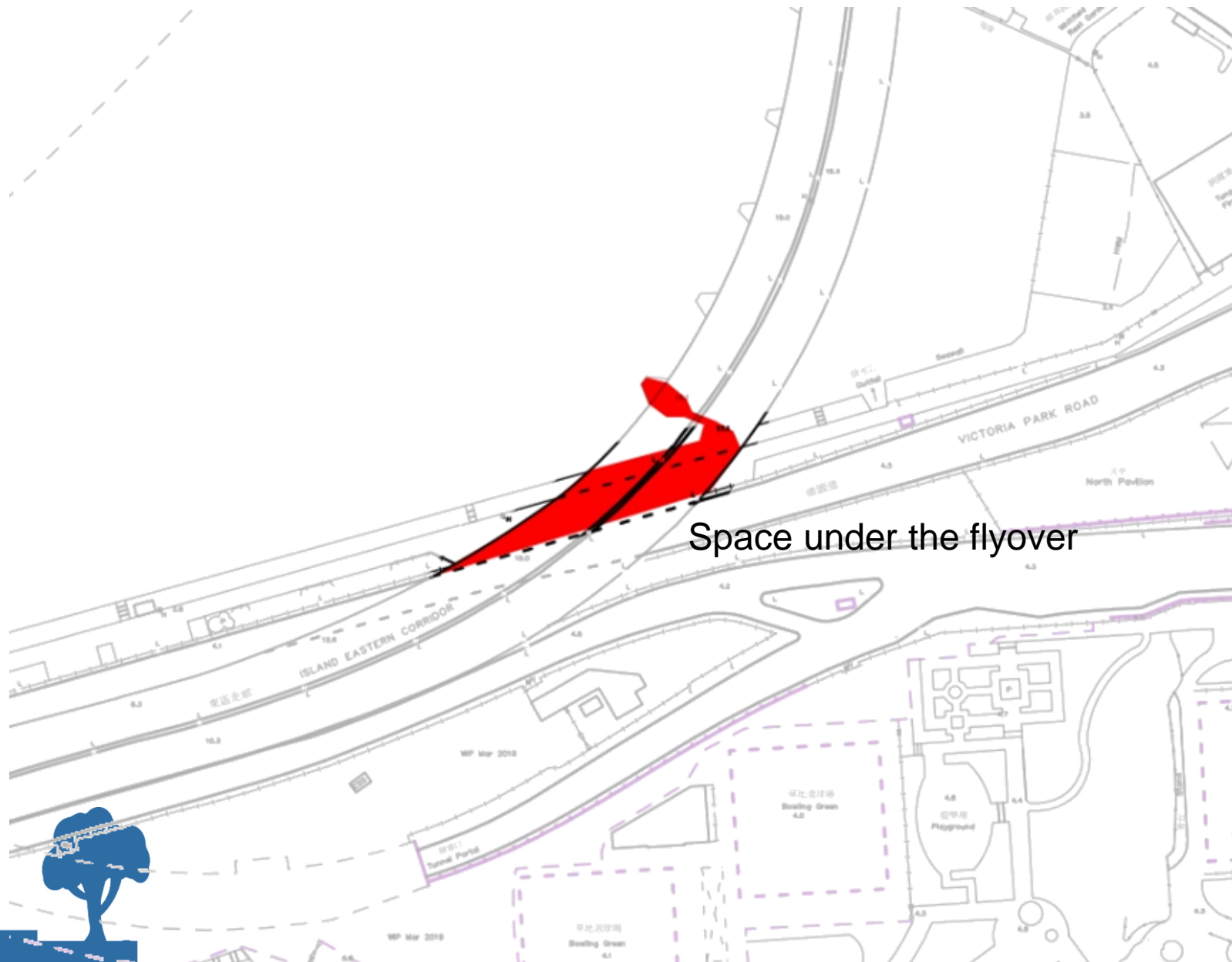
(By Private Party)



To link up the “broken” promenade
causeway bay typhoon shelter

PROPOSAL [1]

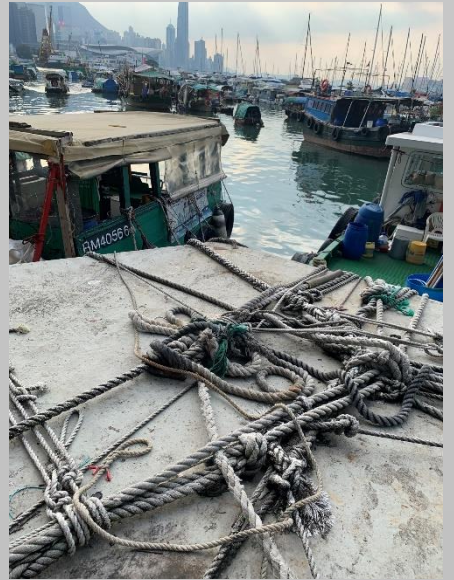
2. Enhancing the use of the Sheltered Area



PRESENT condition



A seating area,
an access to the boats,
a photo-taking point...





Screened-off, extended and
enhanced seating area
causeway bay typhoon shelter

PROPOSAL [2]

PRESENT condition



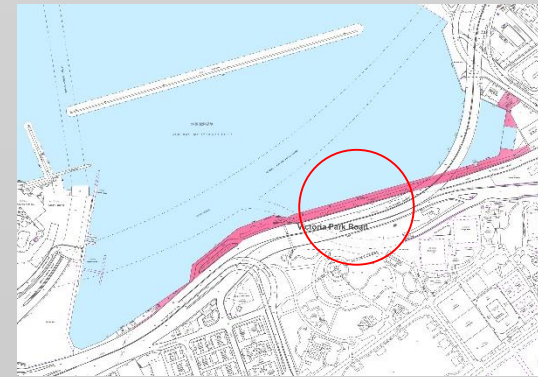
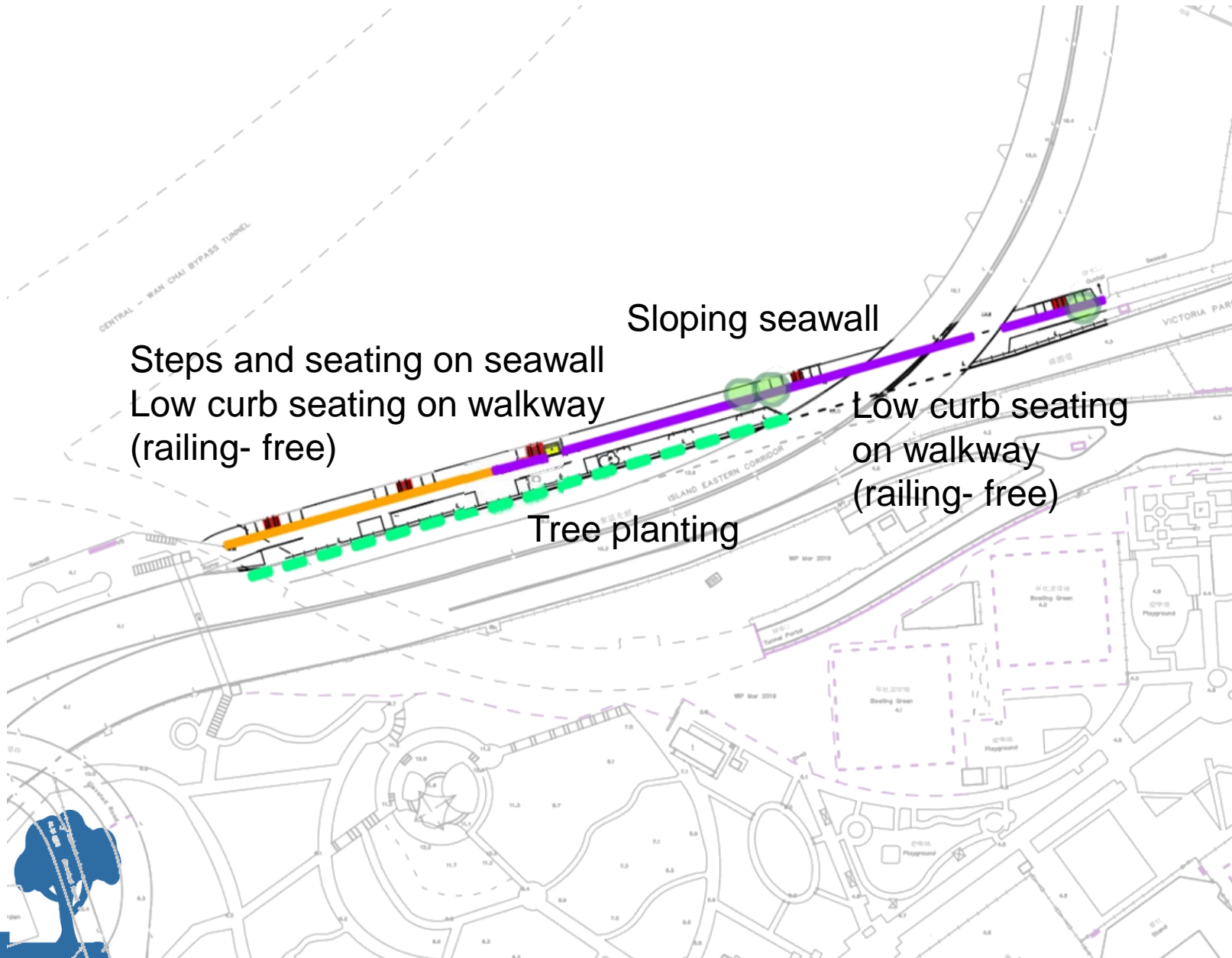
Facilitate current usage



Enhanced seating area
causeway bay typhoon shelter

PROPOSAL [2]

3. "Water friendly" Steps and Seating



Reference images/ seating



Photo 6



Photo 7

PAST



Photo 9



Photo 10

PRESENT



Existing landing steps



- All along the walkway next to sloping seawall:
1. Railing-Free
 2. Low Curb Reinforced Concrete Seating
 3. More trees for shading



Photo 10



PROPOSAL [3]



New harbour steps and seatings
(between the footbridge and water selling kiosk)

causeway bay typhoon shelter

PROPOSAL [3]



PAST



Photo 12



Photo 13

Shelter and Seating

PRESENT



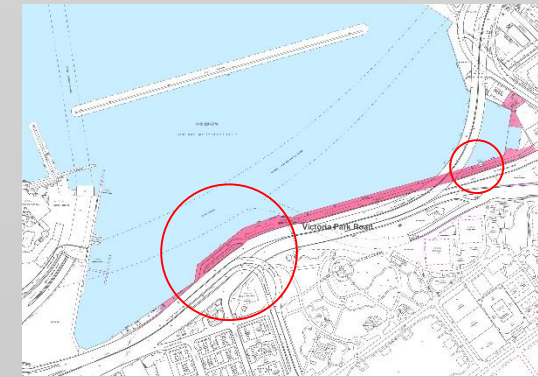
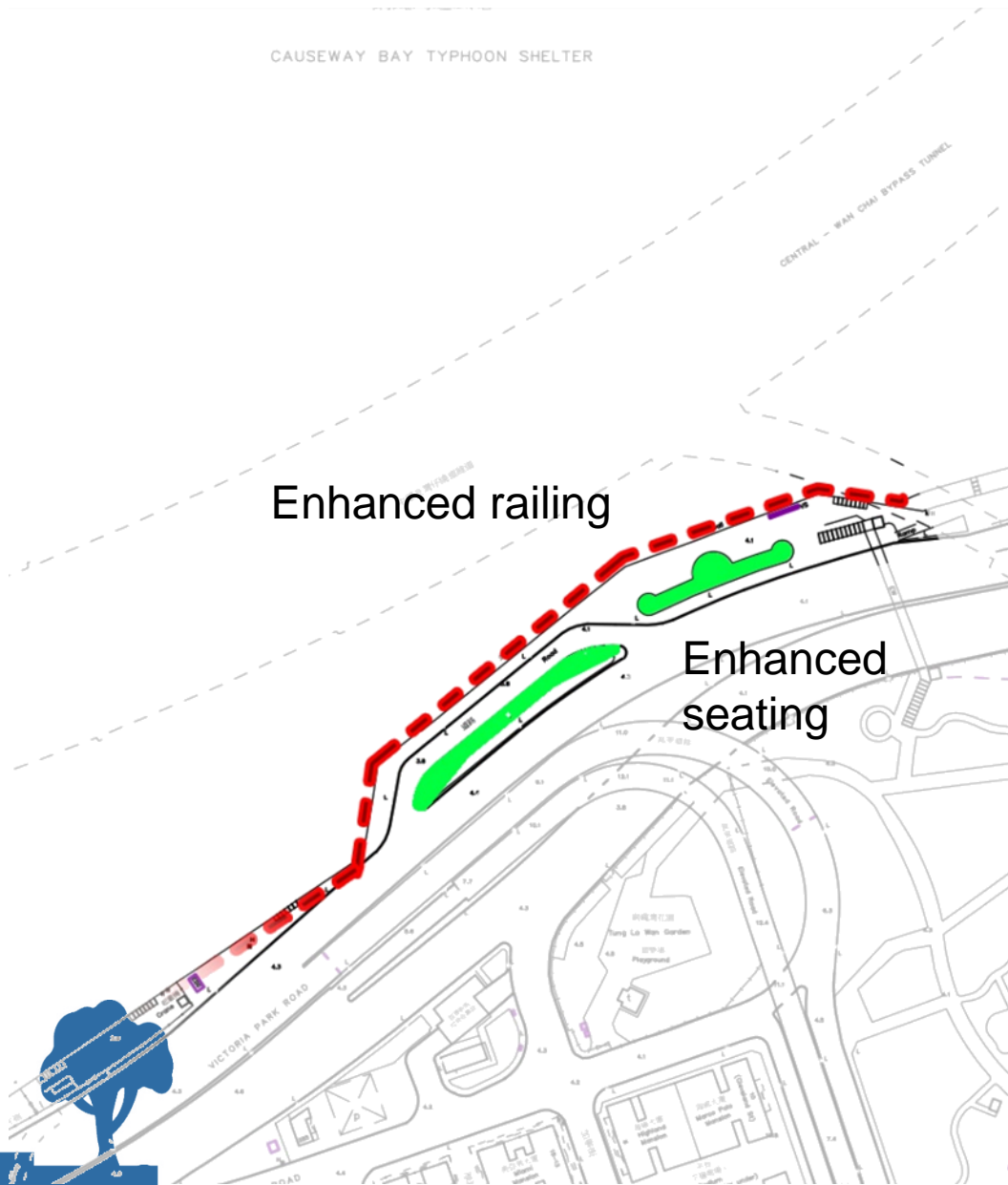


Face-lifting an existing shelter by adding seating



4. Sheltering the uncovered open area

CAUSEWAY BAY TYPHOON SHELTER



Reference images/ seating



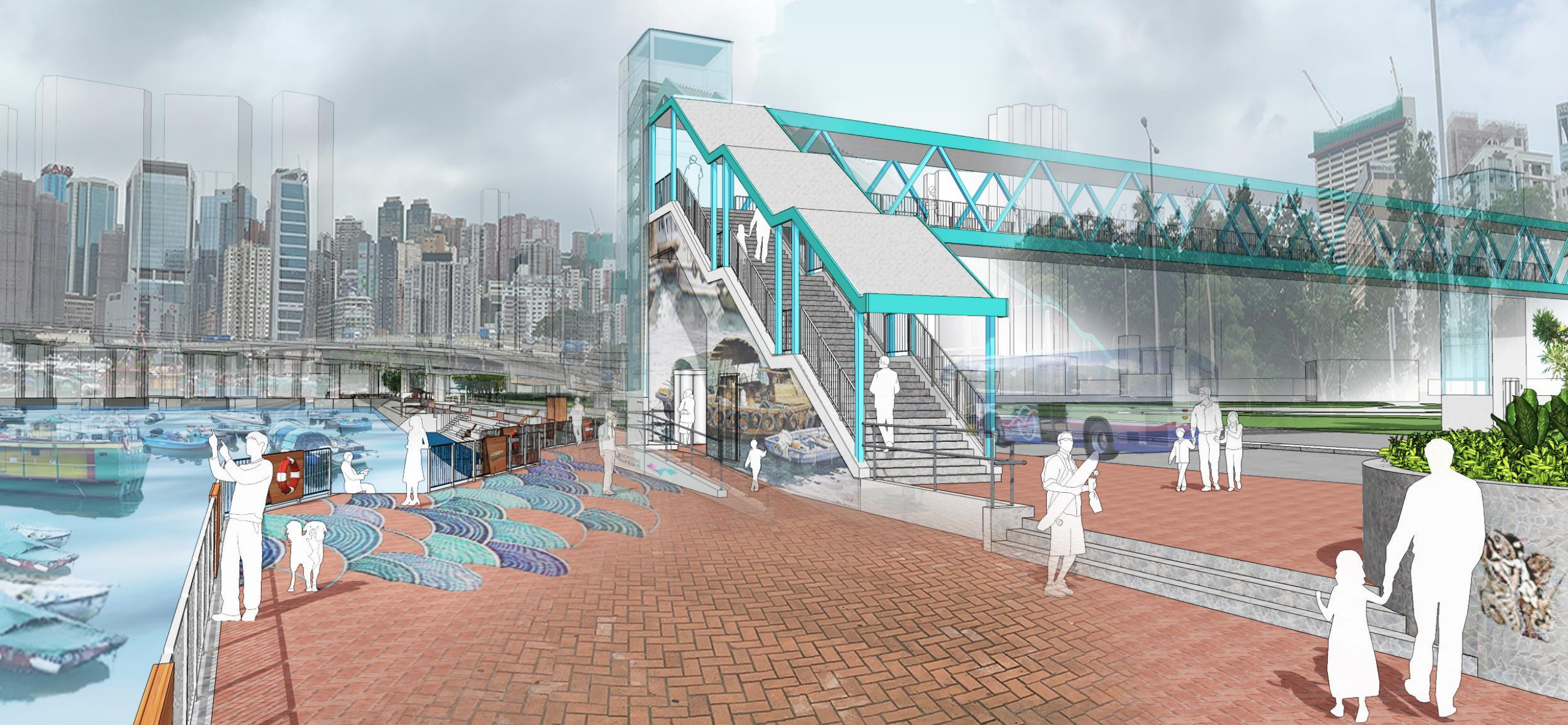
Photo 11

PRESENT condition



Fencing of Manhole

Fencing of Manhole



- Replace matching cover for manhole & remove railing surrounding the manhole
- Graphics and wayfinding on wall and floor subject to further design development (towards the subway entrance next to Jardine Noonday Gun)

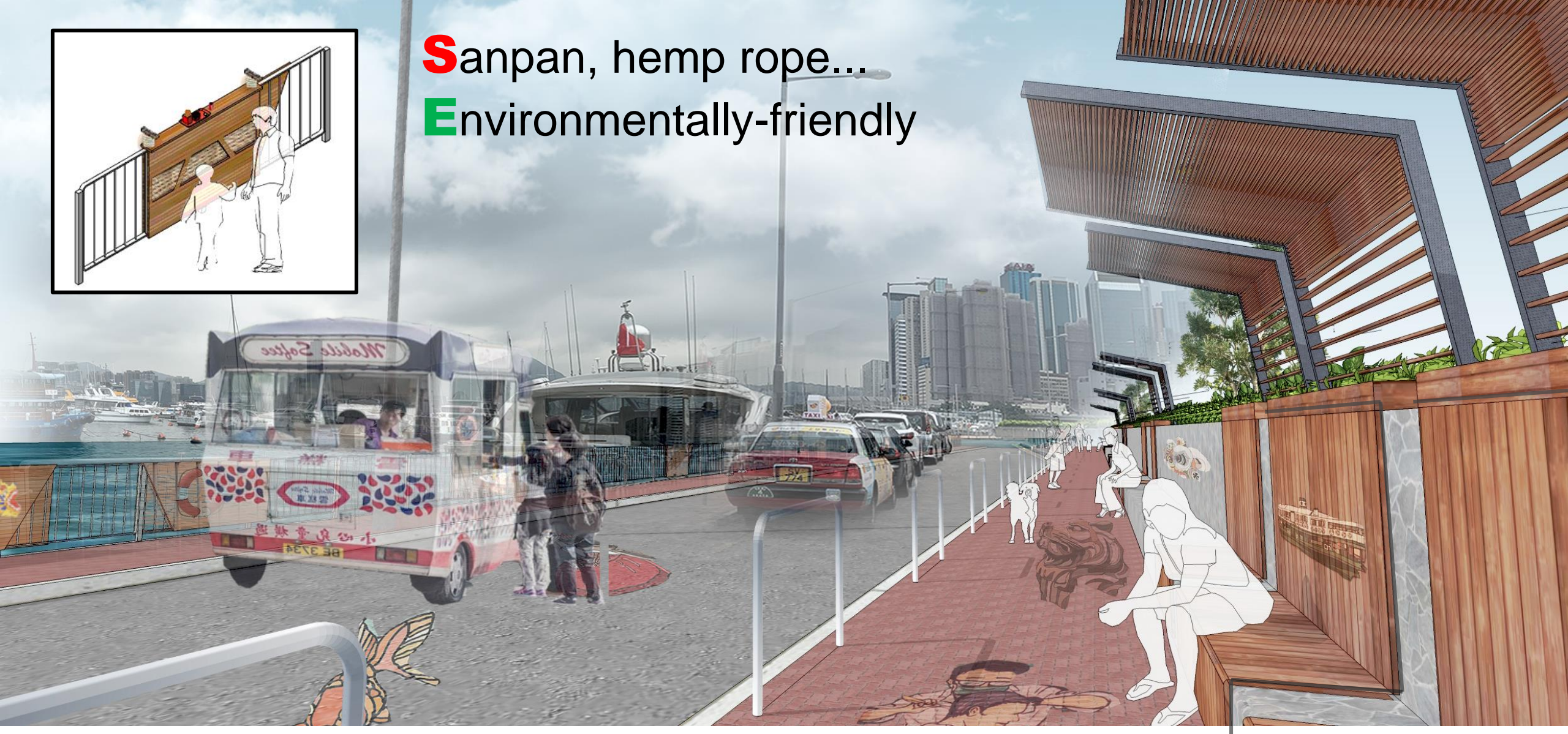
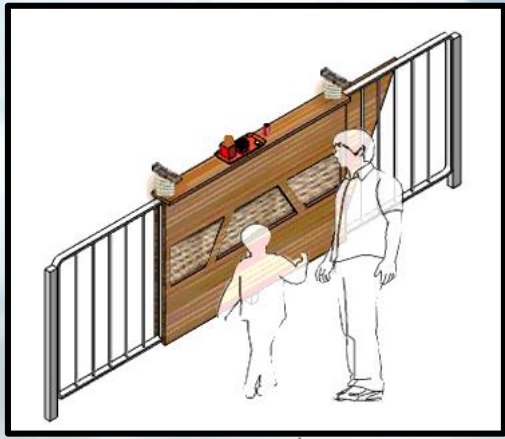
causeway bay typhoon shelter

PROPOSAL [4]

PRESENT condition



Sanpan, hemp rope...
Environmentally-friendly



Enhanced railing and seating area
causeway bay typhoon shelter

PROPOSAL [4]

Photo Credit:

Photo 1:

https://www.google.com/maps/place/Causeway+Bay+Typhoon+Shelter/@22.2845653,114.1851642,3a,75y,90t/data=!3m8!1e2!3m6!1sAF1QipPUbuwl0vlaZdTxaNsjFA_CBzb8LSwQ3Dcqckvp!2e10!3e12!6shttps:%2F%2Fh5.googleusercontent.com%2Fp%2FAF1QipPUbuwl0vlaZdTxaNsjFA_CBzb8LSwQ3Dcqckvp%3Dw203-h304-k-no!7i4160!8i6240!4m5!3m4!1s0x340400ff5fd3cc87:0x617dfa74b8d15f5a!8m2!3d22.2845653!4d114.1851642

Photo 2: <http://www.asiaatsea.com/tin-hau-chinese-goddess-of-the-sea/floating-temple-at-causeway-bay-typhoon-shelter/>

Photo 3: <https://ecosustainablehouse.com.au/products/recycled-timber-decking>

Photo 4: <https://www.archdaily.com/793850/kaplan-family-pavilion-at-city-of-hope-belzberg-architects/57bb7629e58ecef75000037-kaplan-family-pavilion-at-city-of-hope-belzberg-architects-photo>

Photo 5: <https://www.dcfever.com/photosharing/view.php?id=269157>

Photo 6: <https://divisare.com/projects/199489-bergmeisterwolf-landscape-frame>

Photo 7: <https://www.archilovers.com/projects/186808/the-bands.html>

Photo 8:

https://www.google.com/maps/place/Causeway+Bay+Typhoon+Shelter/@22.2845653,114.1851642,3a,75y,90t/data=!3m8!1e2!3m6!1sAF1QipOy24ZLG4WnFMS0_NNGE9kQ4xJxojpW1LgGsVje!2e10!3e12!6shttps:%2F%2Fh5.googleusercontent.com%2Fp%2FAF1QipOy24ZLG4WnFMS0_NNGE9kQ4xJxojpW1LgGsVje%3Dw203-h135-k-no!7i6240!8i4160!4m5!3m4!1s0x340400ff5fd3cc87:0x617dfa74b8d15f5a!8m2!3d22.2845653!4d114.1851642

Photo 9: https://hongkongandmacaufilmstuff.blogspot.com/2013/07/bloodsport-jean-claude-van-damme-1987_3907.html

Photo 10: <https://gwulo.com/atom/12133>

<https://plasticraft.co.nz/2019/07/09/street-furniture-in-australia/>

Photo 11: <https://plasticraft.co.nz/2019/07/09/street-furniture-in-australia/>

Photo 12: <https://www.google.com.hk/maps/@22.284245,114.1871488,3a,75y,31.47h,79.25t/data=!3m7!1e1!3m5!1sku-3ZAihey3LBpu0jhj1Q!2e0!5s20081201T000000!7i13312!8i6656?hl=zh-TW>

Photo 13:

<https://www.google.com.hk/maps/@22.2843419,114.1875602,3a,41.7y,25.87h,82.88t/data=!3m7!1e1!3m5!1sKQcnoiFRPB5Uqi6qbKJlw!2e0!5s20090101T000000!7i13312!8i6656?hl=zh-TW>

Thank you

