

25 May 2016

Reprovisioning of Tin Chiu Street Playground

Consultation with Harbourfront Commission
Task Force on Harbourfront Developments on Hong Kong Island



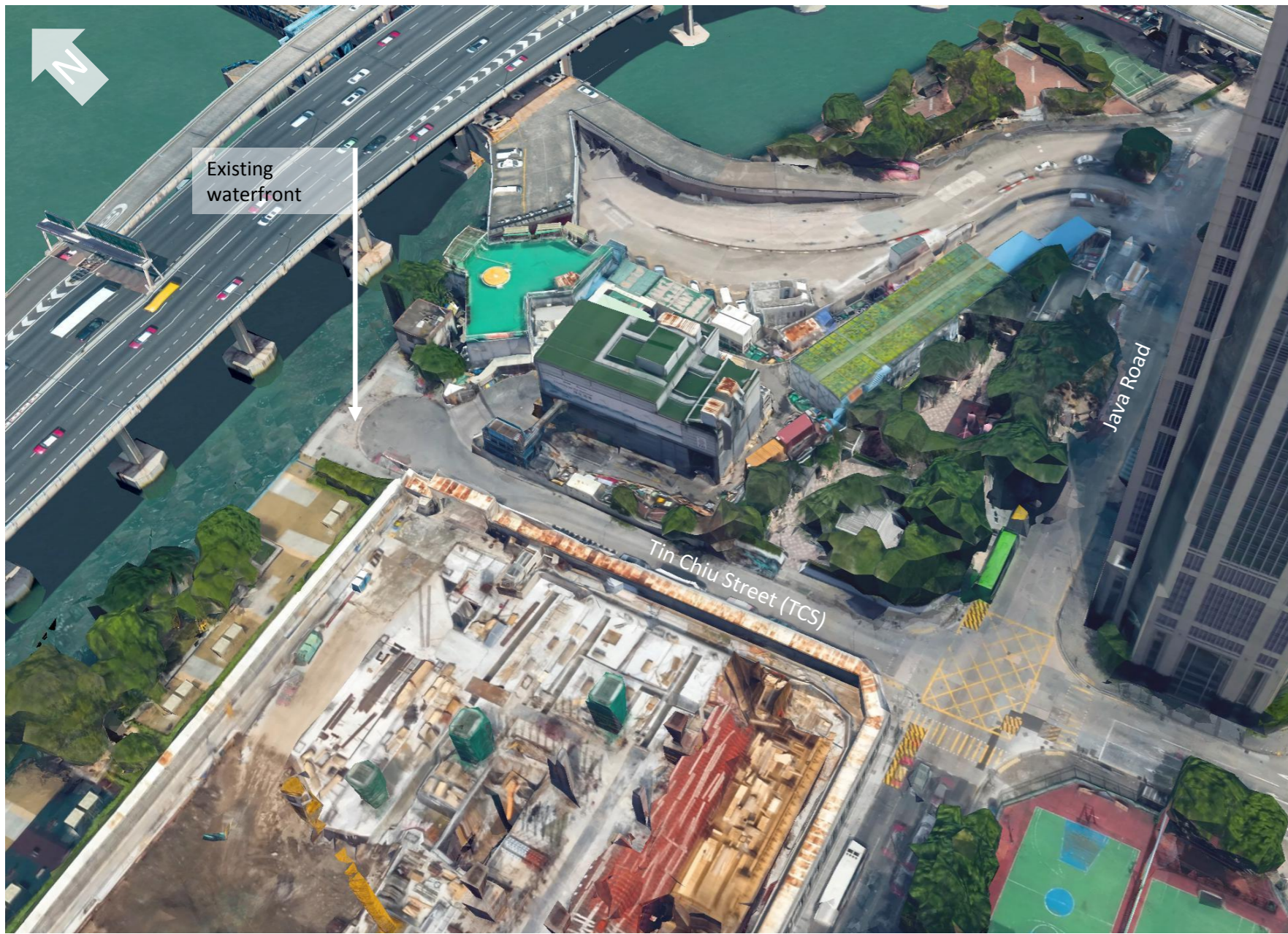


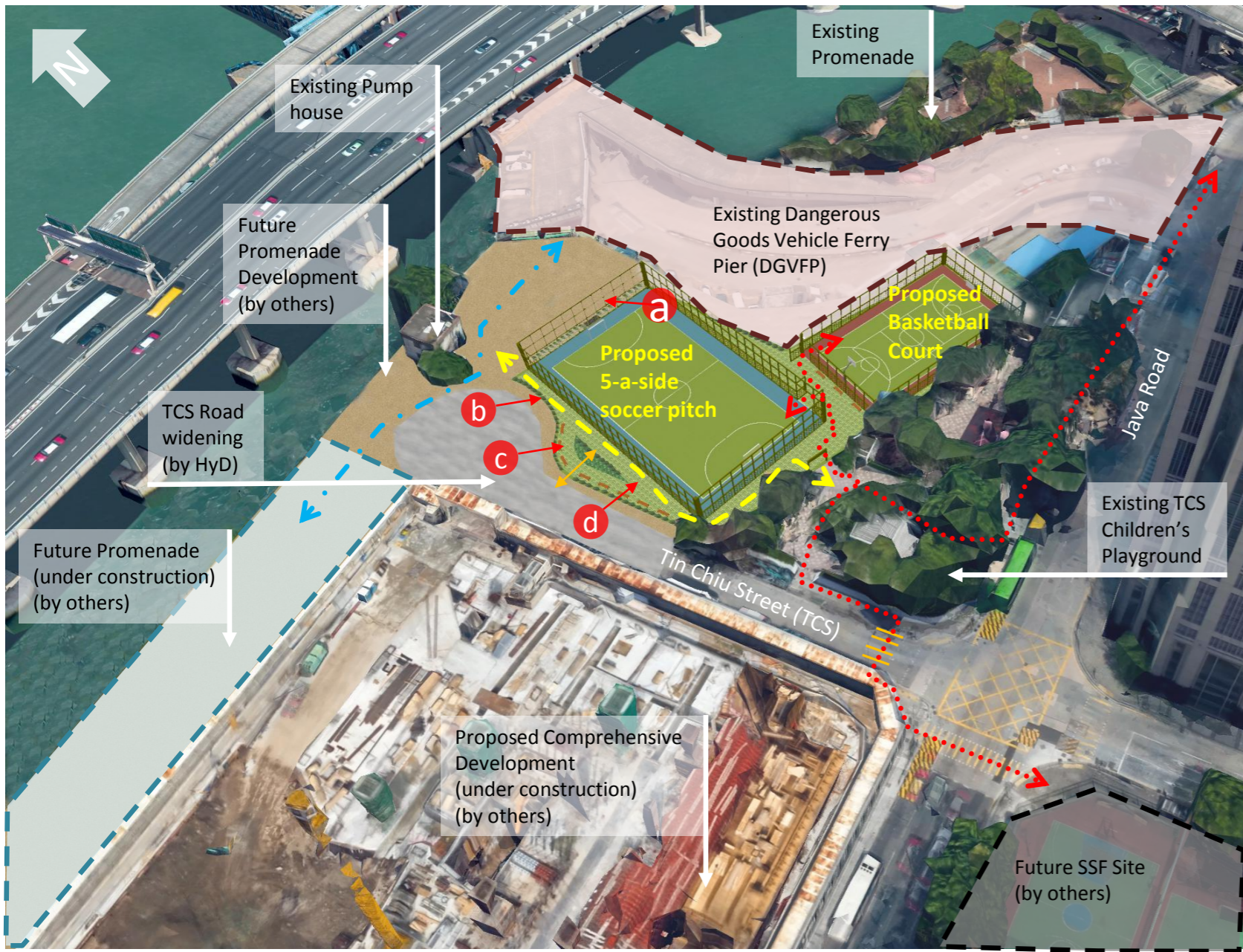
















Key design elements

- a** Ball court fencing with low level vertical greening for visual integration with future promenade
- b** Shrub along site boundary as soft transition between future promenade
- c** Ample sitting bench for serving both users of TCSP and pedestrian from future promenade
- d** Paving pattern and signage design subject to the requirements of future promenade development



-  Pedestrian connection from urban area to the ball court
-  Pedestrian connection from future promenade via ball court to the existing TCS Children's Playground
-  Connection with widened Tin Chiu Street
-  Pedestrian movement along harbourfront/ promenade



A blue-tinted photograph of a dense city skyline, likely Hong Kong, viewed across a body of water. The skyline is composed of numerous high-rise buildings of varying heights and architectural styles. In the foreground, the water is visible with some ripples. The sky is overcast with grey clouds. The text "Thank you!" is overlaid in the center of the image in a white, sans-serif font.

Thank you!