

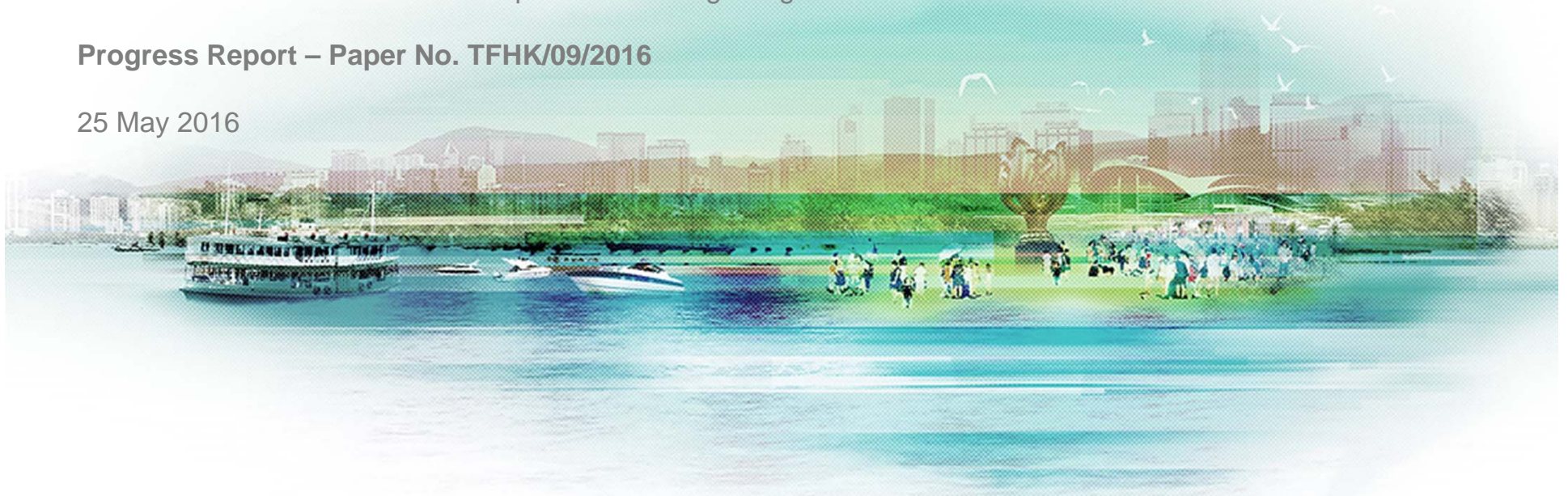
Agreement No. CE 54/2014 (TP)

# URBAN DESIGN STUDY FOR THE WAN CHAI NORTH AND NORTH POINT HARBOURFRONT AREAS FEASIBILITY STUDY

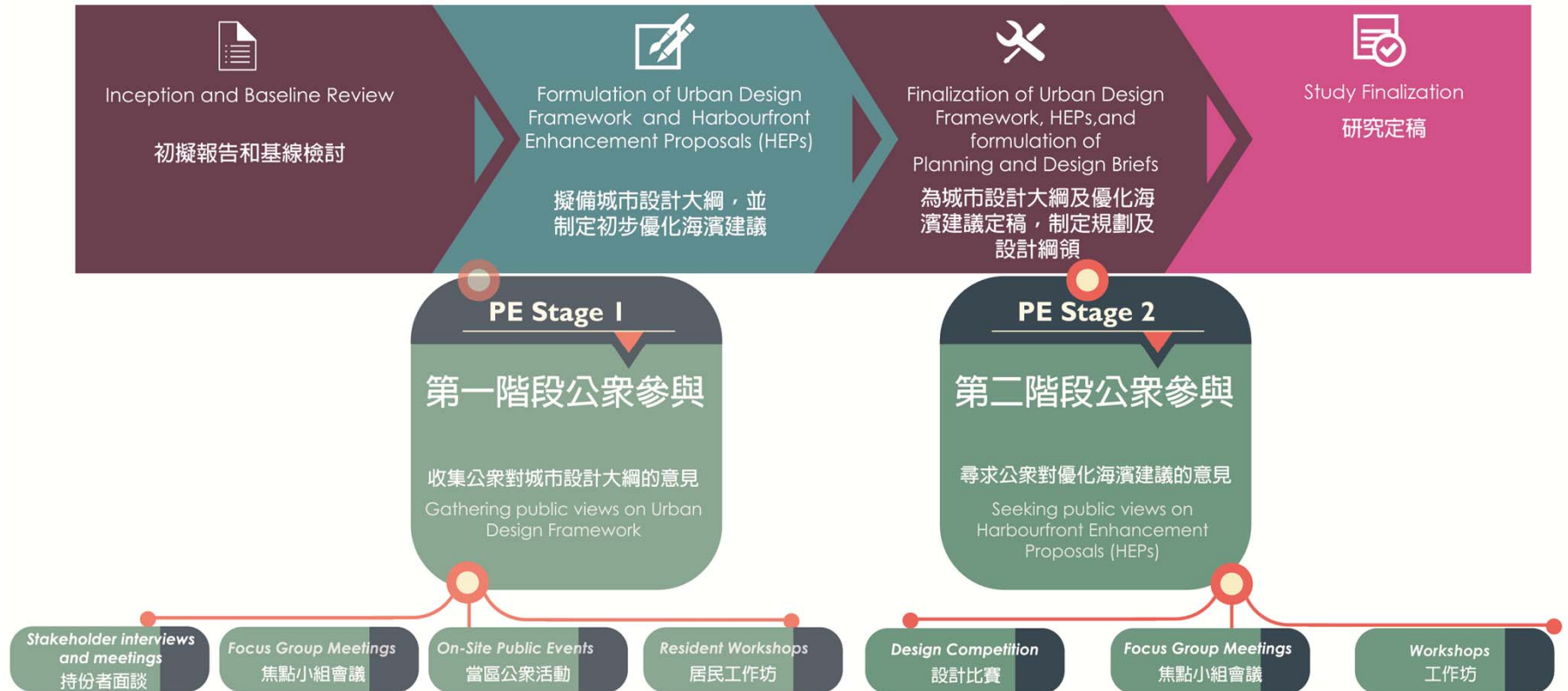
Harbourfront Commission  
Task Force on Harbourfront Developments on Hong Kong Island

**Progress Report – Paper No. TFHK/09/2016**

25 May 2016



# Study Progress



## Study Progress

Since completion of Stage 1 public engagement last year, the Study Team had continue to maintain close liaison with HC regarding the study:

Dates	Key Item Discussed
21 Sep 2015	Meeting with TFHK on Stage 1 Public Engagement Findings
02 Nov 2015	Meeting with WGUDS on Preliminary Ideas of the Harbour Enhancement Proposals (HEPs)
29 Feb 2016	Meeting with TFHK on Stage 2 Public Engagement Work Plan + Overview on Design Ideas Competition
06 May 2016	Meeting with WGUDS on Refined HEPs

## Study Progress

### Summary of Members' Key Comments (2 Nov 2015)

	Celebration Precinct	Pierside Precinct	Water Sports & Recreation Precinct	Revitalised Typhoon Shelter Precinct	East Coast Park Precinct
<b>Design</b>	Flexibility, Multifunctional, No over design				
		Multi-functional for variety of events	Wave attenuation & safety	Cantilevered boardwalk	Larger lawn area
	Bring in cultural and arts elements	No railing along waterfront			
	Extend Sunset Plaza to promenade	Appropriate tree species with large canopy			Free access to Eastern breakwater
	Depressed water edge	Carefully designed EVA			
<b>Facilities</b>	F&B facilities	F&B & alfresco dining	Marine supporting uses (e.g. Landing steps)	Sewerage facilities	F&B facilities
	Marine facilities	Berthing of superyachts	Museum	Not compromise typhoon shelter function	Landing steps
	Bicycle facilities		Exhibition of junk		Free pet access
	Outdoor seating				Community garden and leisure farming
	Coach parking				
<b>Connectivity</b>	APA to waterfront	Hinterland (Tonnochy Road, Marsh Road) to waterfront	Widen the bridge with Percival Street		
		Exhibition Station to waterfront			

## Study Progress

### Summary of Members' Key Comments (6 May 2016)

- **HEPs** should **benefit the general public at large**;
- **Technical** and **operational requirements** of the marine and water sports uses and activities should be taken into consideration in the HEPs;
- Apart from water sports and recreational uses, **marine uses** with the associated **supporting facilities**;
- Marine **mooring efficiency** should be taken into consideration in the revitalization of the **Causeway Bay Typhoon Shelter**;
- Other more specific comments on design of park/ open space for pedestrians, cyclists, and landscape decks and proposed cantilever decks;

## Stage 2 Public Engagement Programme

### Tentative Work Plan for Stage 2 PE

Dates	Key Events/ Activities
end May/ early Jun 2016	Commencement of Stage 2 PE
early Jun – early Aug 2016	Roving Exhibitions
June – July 2016	Exhibition of Entries of the Design Ideas Competition
mid – end-Jun 2016	Focus Group Meetings <ul style="list-style-type: none"> <li>• Professional Institutes</li> <li>• Water Sports and Recreation-Related Groups</li> <li>• Art and Cultural Groups</li> </ul>
mid-Jun 2016	Design Ideas Competition – Prize-giving Ceremony
mid – end-Jun 2016	Exhibition of the 35 entries at City Gallery
end-Jun – end-Jul 2016	Consultation Meeting w. Eastern District Council Consultation Meeting w. Wan Chai District Council
mid – end-Jul 2016	<ul style="list-style-type: none"> <li>• Public Workshop (1)</li> <li>• Public Workshop (2)</li> </ul>
early Aug 2016	Completion of Stage 2 PE

**Thank You!**

