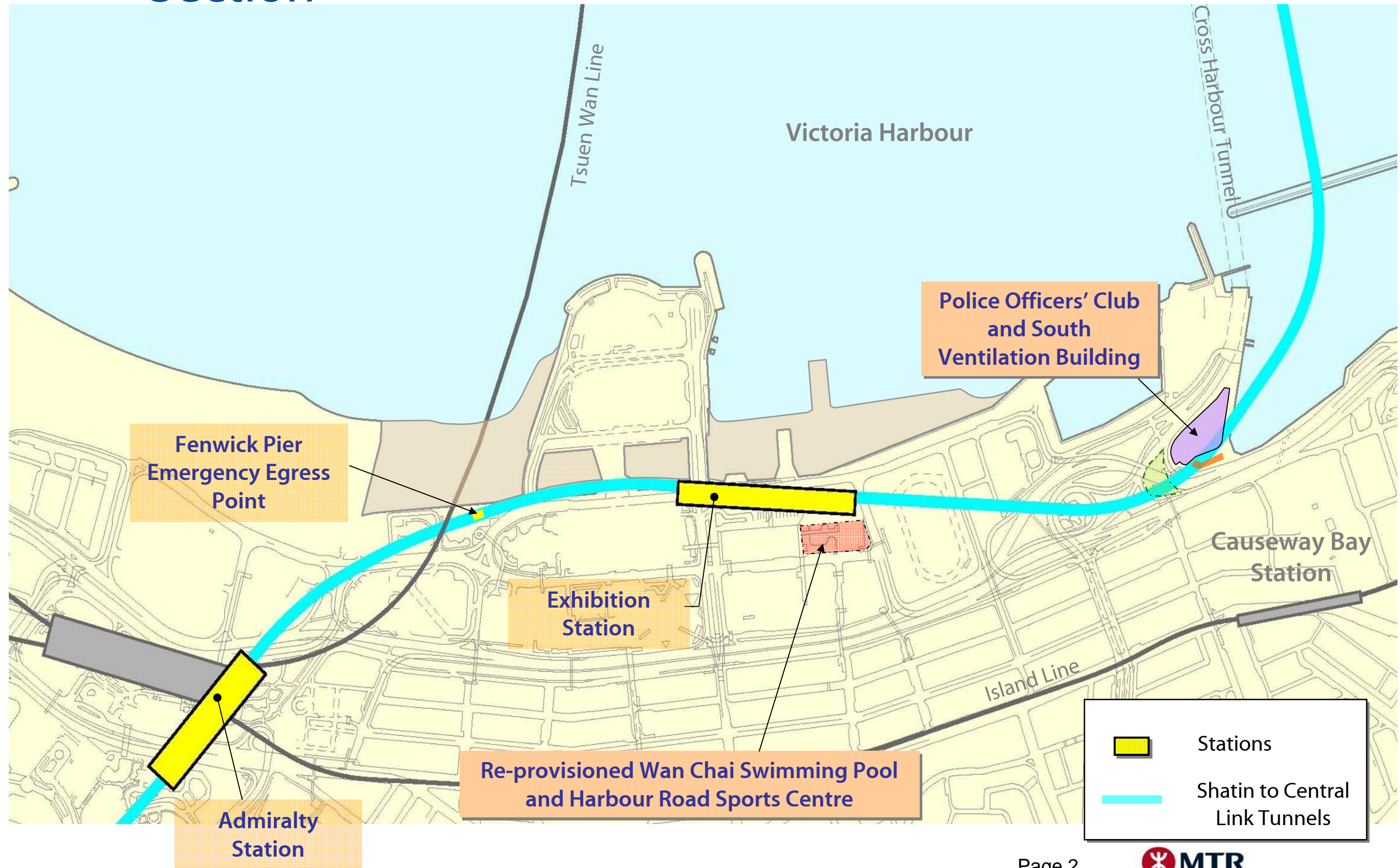




# Shatin to Central Link - SCL Hong Kong Island Section

Harbourfront Commission  
Task Force on Harbourfront Developments on Hong Kong Island  
24 October 2013

# Shatin to Central Link – Hong Kong Island Section

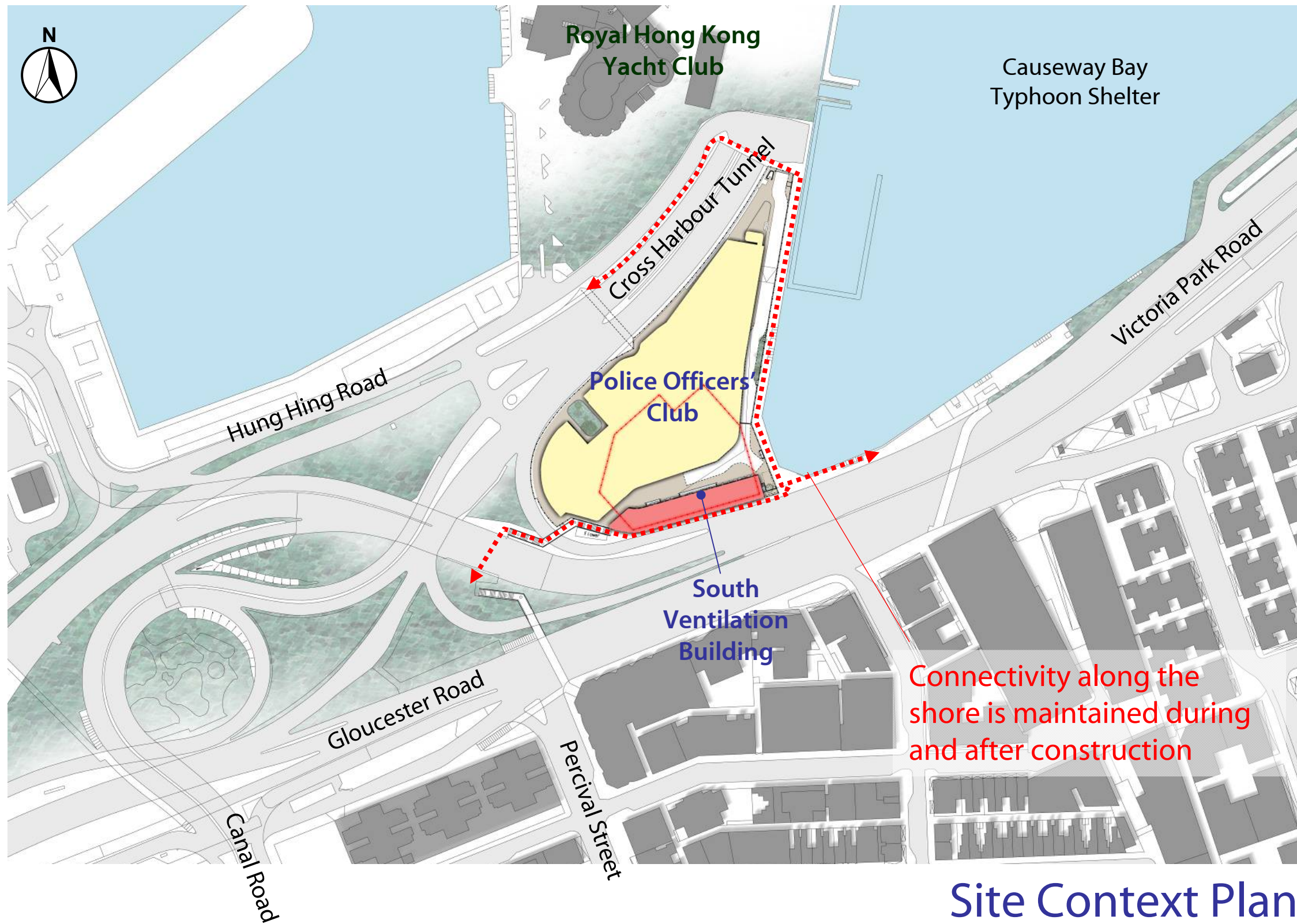


# Agenda

- A) Update on Police Officers' Club / South Ventilation Building
- B) Update on Exhibition Station / Wan Chai Swimming Pool  
and Harbour Road Sports Centre
- C) Update on Fenwick Pier Emergency Egress Point

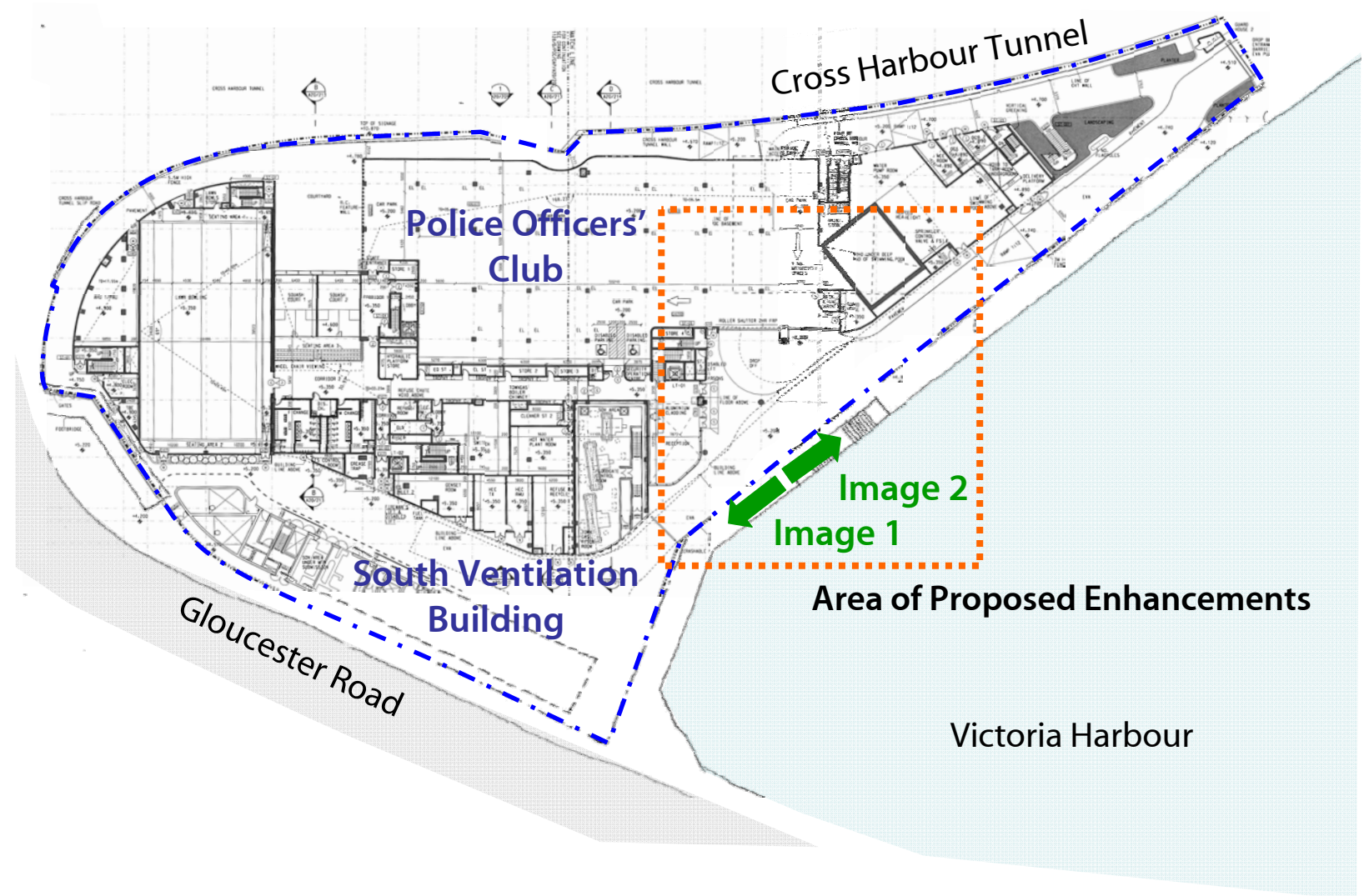
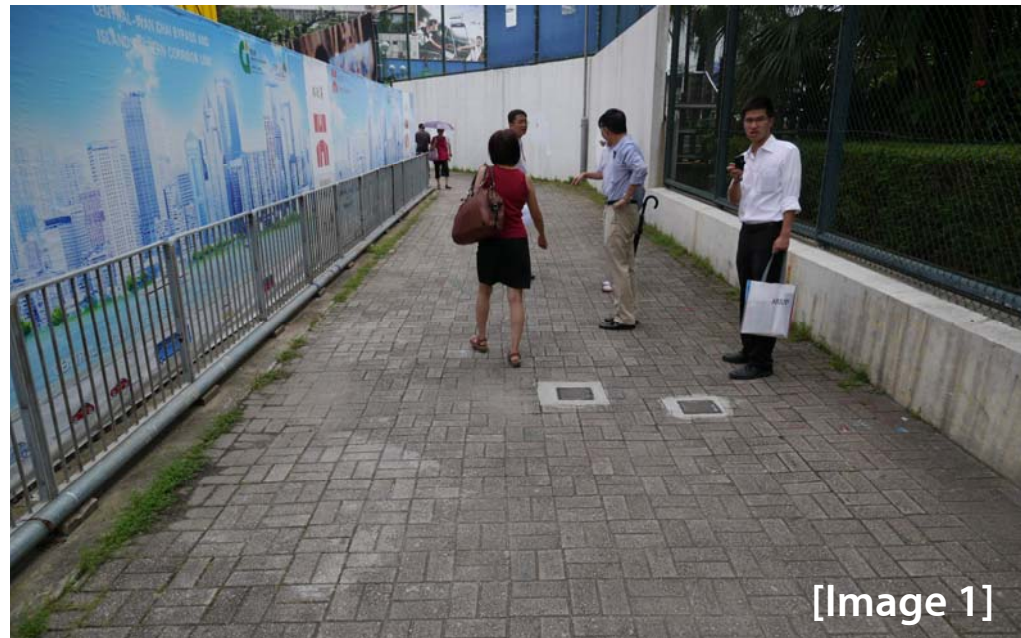
## A) Update on Police Officers' Club / South Ventilation Building

# Police Officers' Club

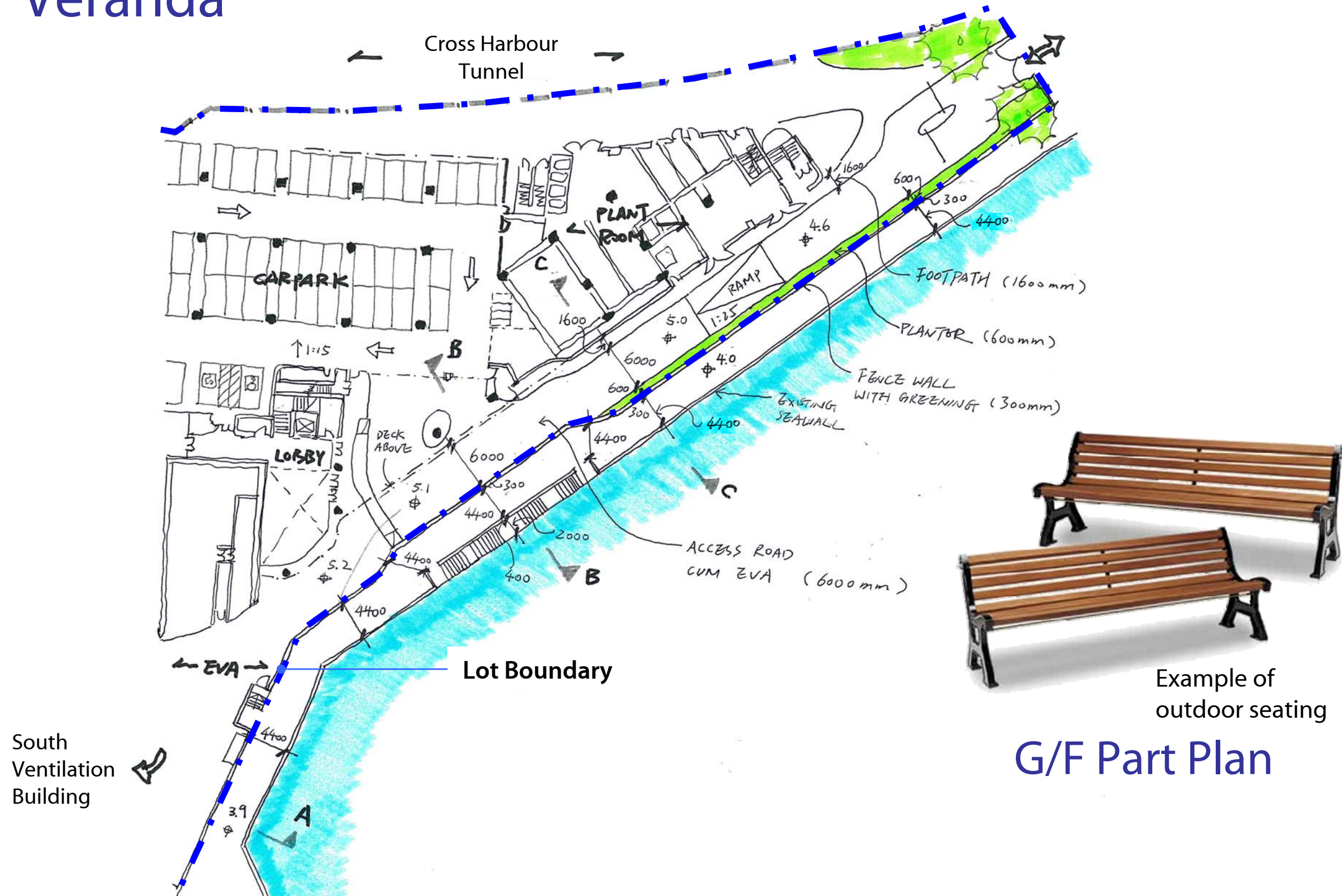


Site Context Plan

# Existing Veranda

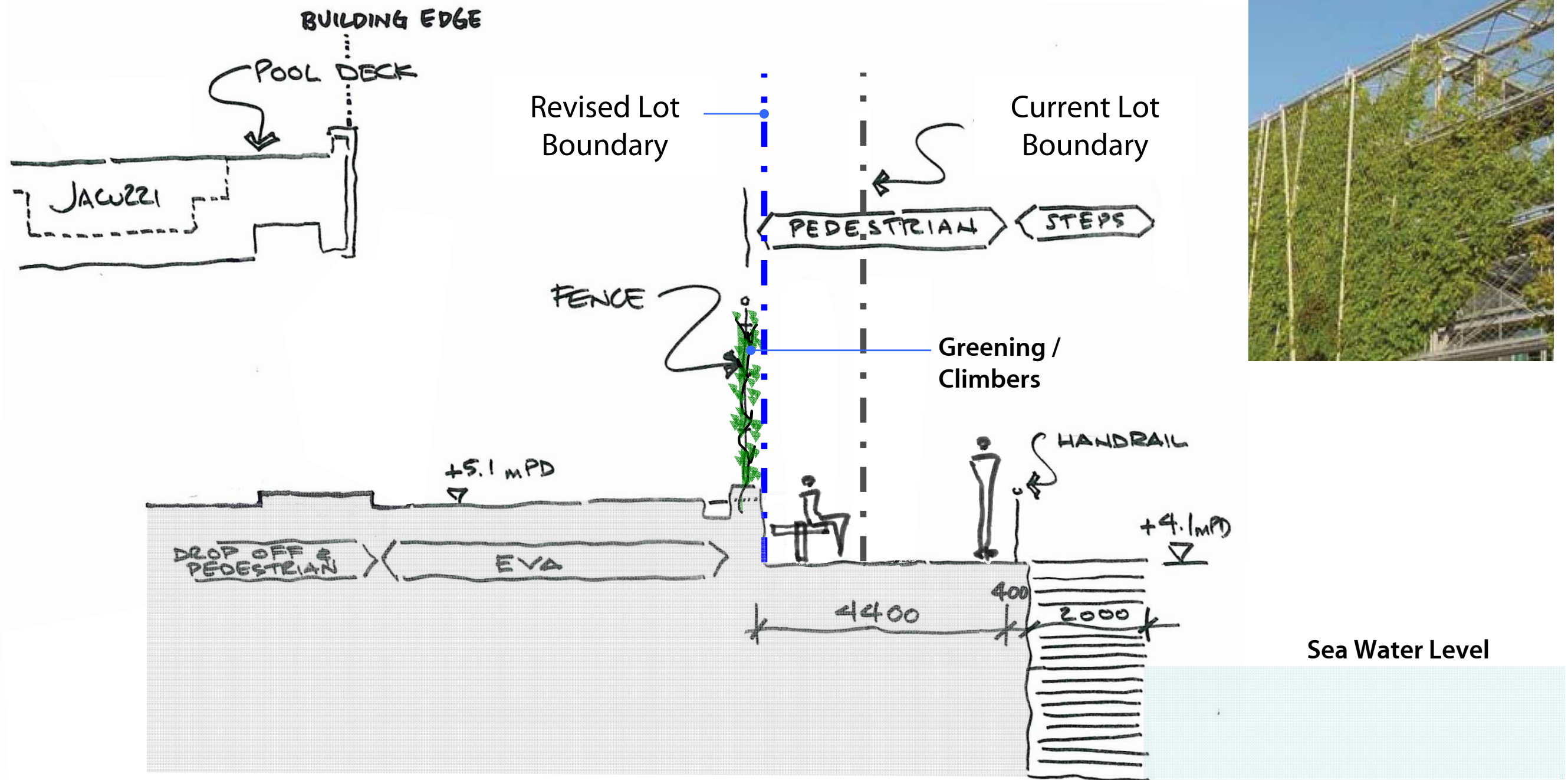


# Proposed Enhancements on Existing Veranda



G/F Part Plan

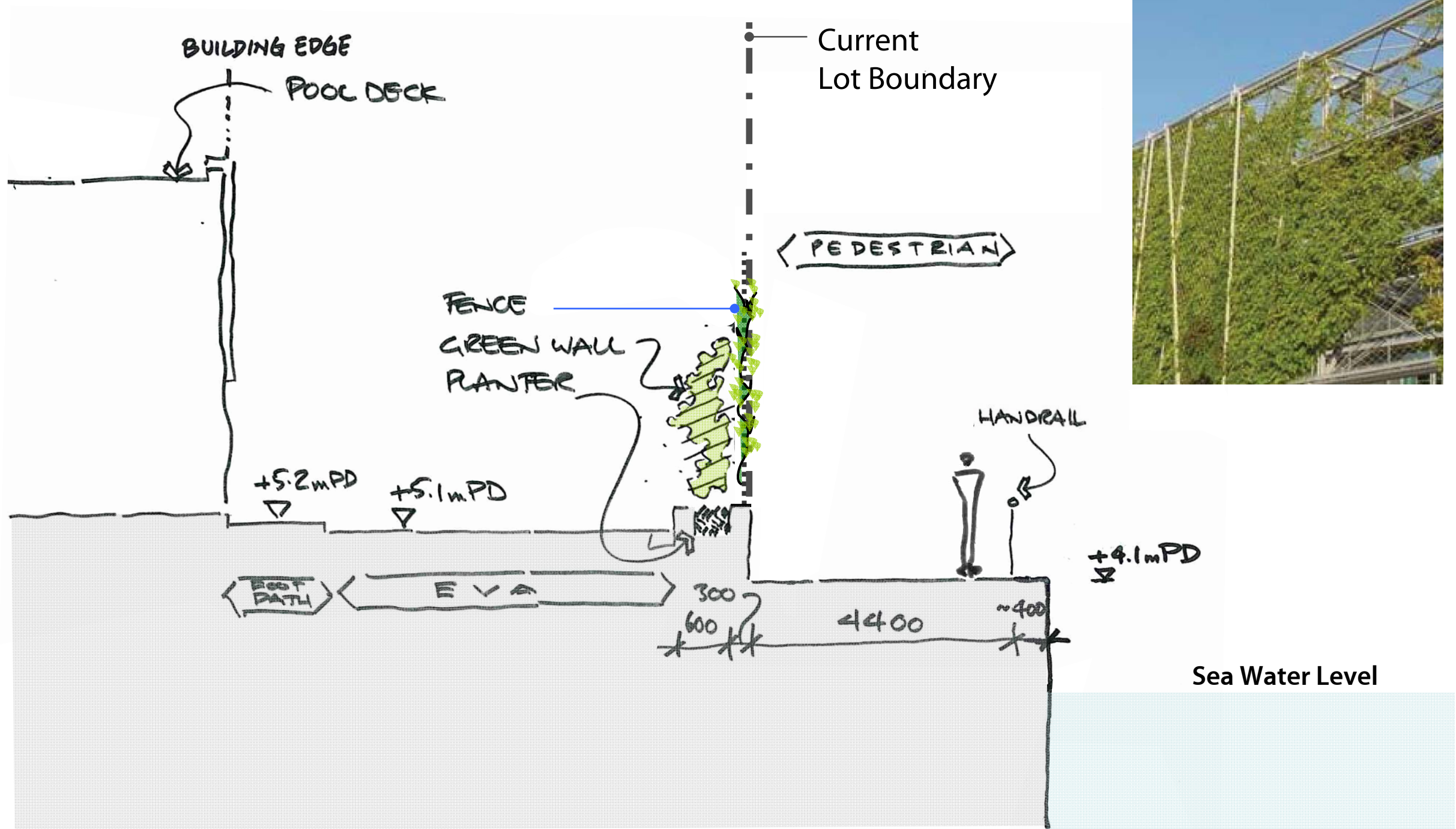
# Proposed Enhancements on Existing Veranda



Cross Section B-B Through Access Road, Veranda & Steps



# Proposed Enhancements on Existing Veranda

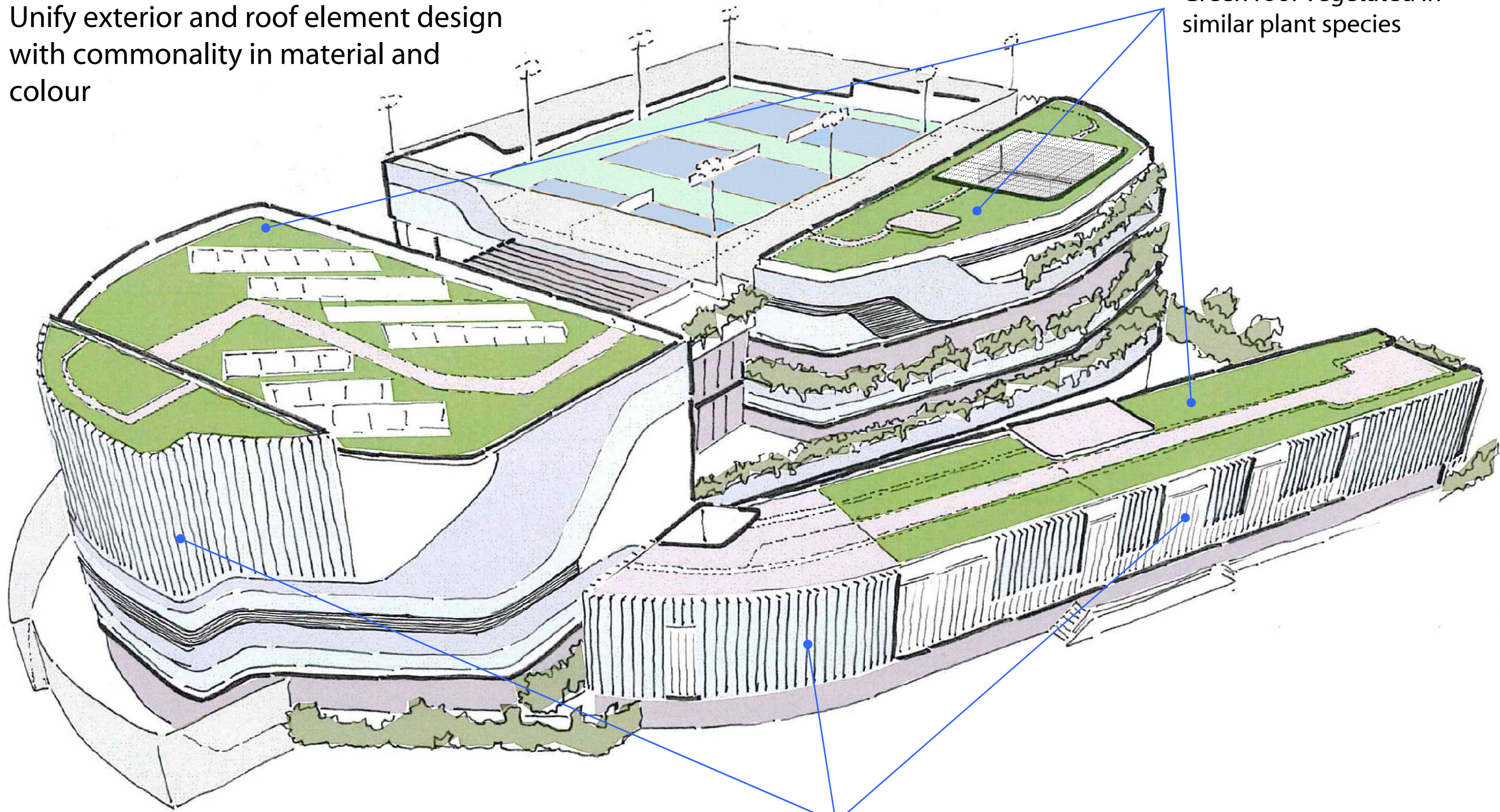


Cross Section C-C Through Access Road & Veranda

# Visual Integration for Police Officers' Club & South Ventilation Building

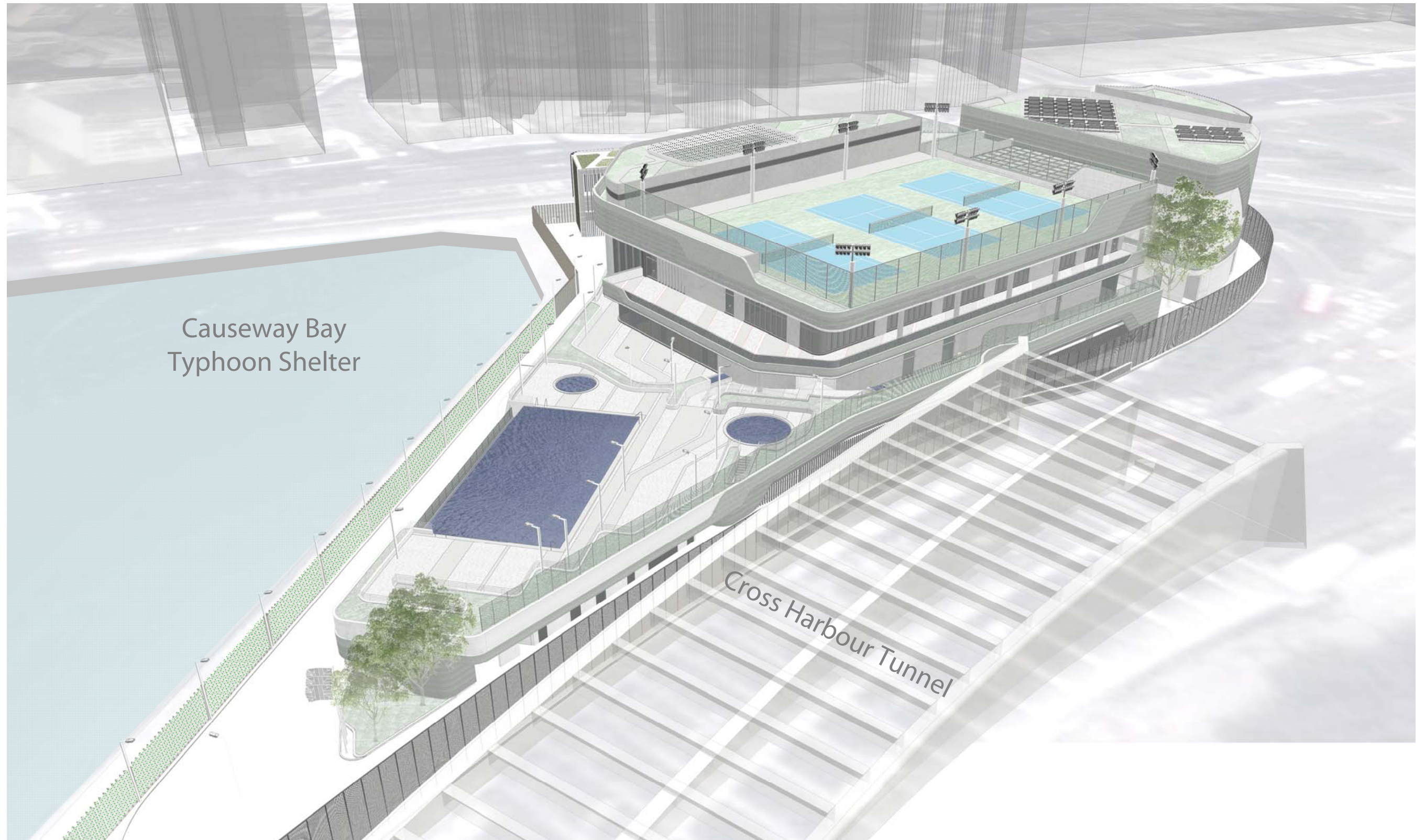
Unify exterior and roof element design with commonality in material and colour

Green roof vegetated in similar plant species



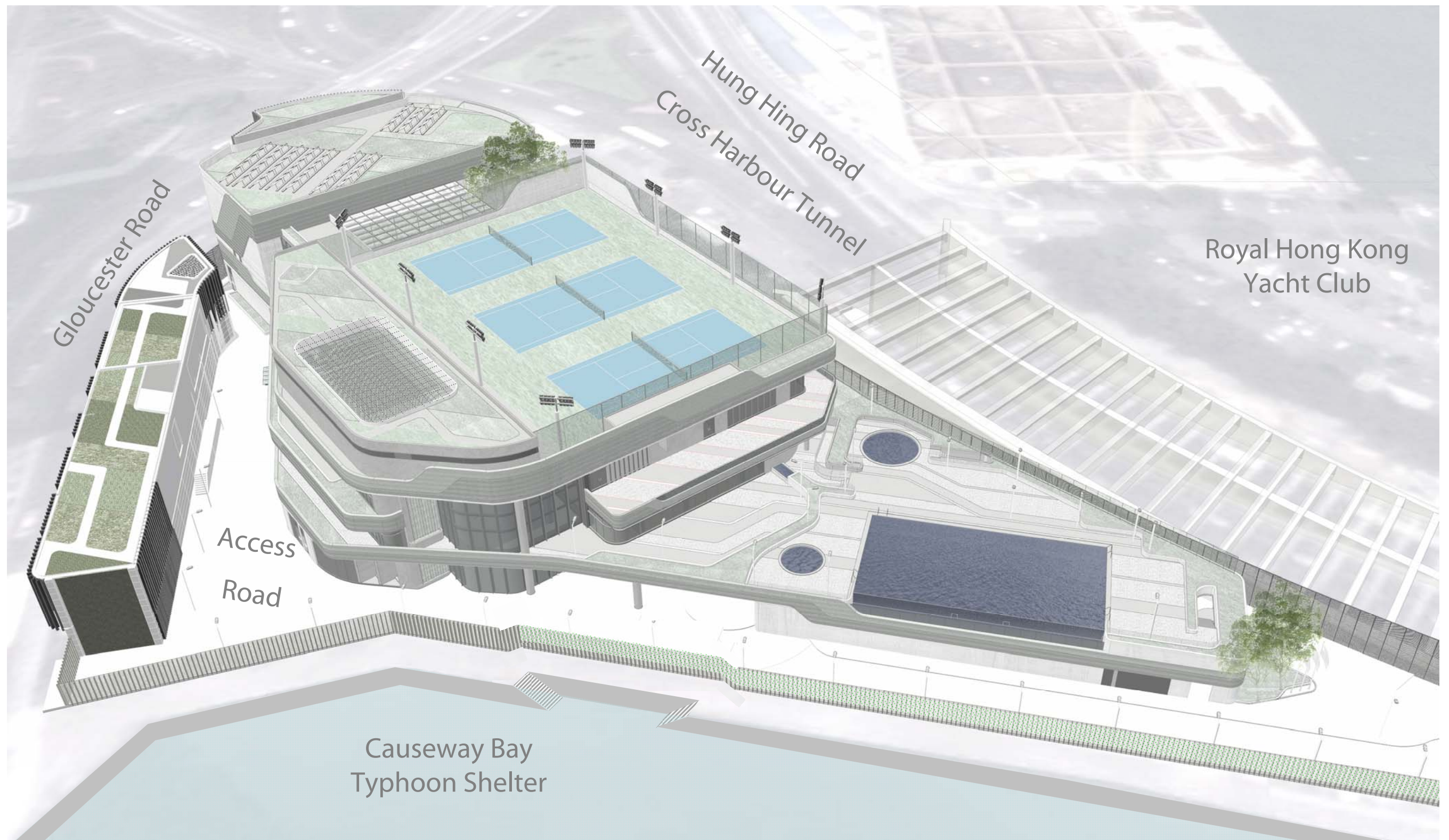
Architectural fins feature to create consistent rhythm, colour and texture along the south elevations of Police Officers' Club and South Ventilation Building

# Police Officers' Club



Artist Impression

# Police Officers' Club

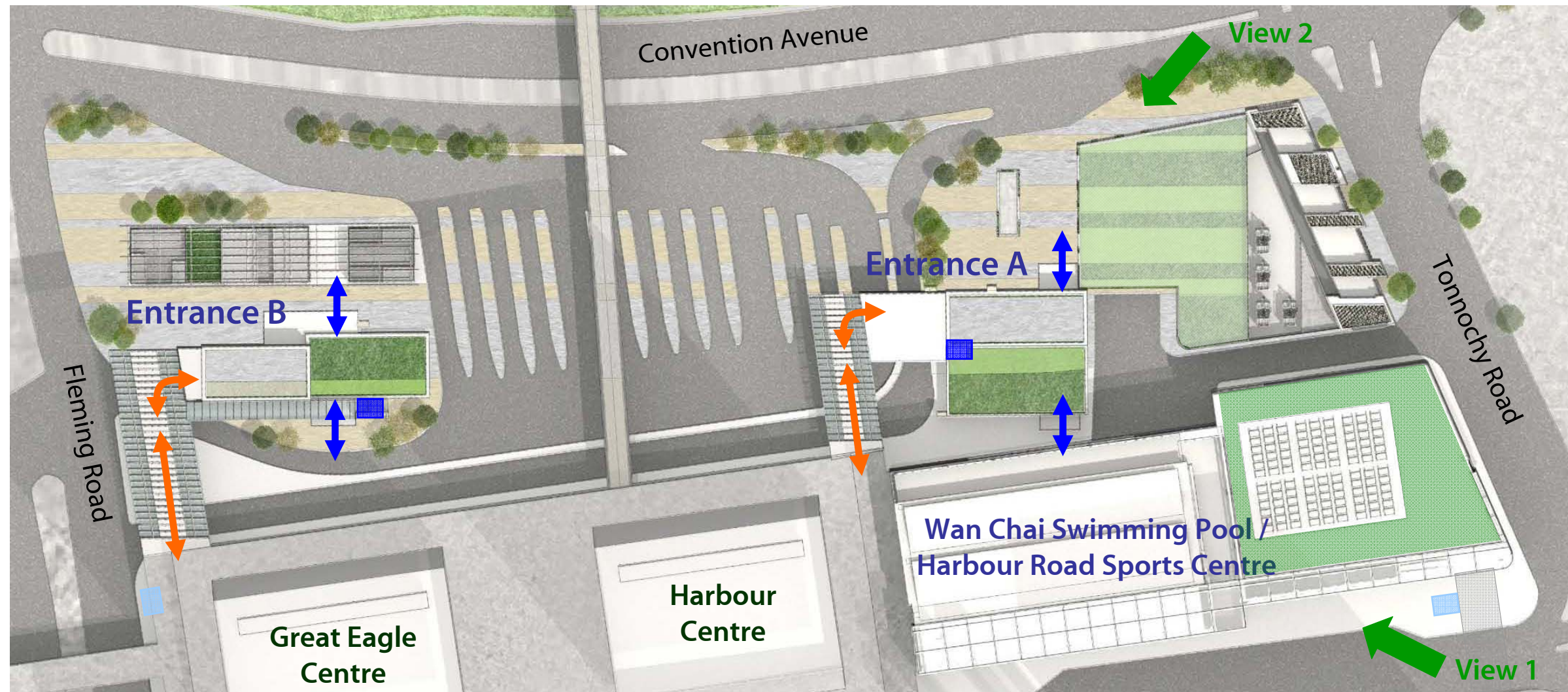


Artist Impression



## B) Update on Exhibition Station / Wan Chai Swimming Pool and Harbour Road Sports Centre

# Exhibition Station / Wan Chai Swimming Pool and Harbour Road Sports Centre



-  Passenger Route (Podium)
-  Passenger Route (At-grade)
-  Station Lift
-  Public Lift

## Site Context Plan

# Re-provisioning Wan Chai Swimming Pool and Harbour Road Sports Centre



Artist Impression [View 1]

# Exhibition Station / Wan Chai Swimming Pool and Harbour Road Sports Centre



Artist Impression [View 2]



# Exhibition Station / Wan Chai Swimming Pool and Harbour Road Sports Centre

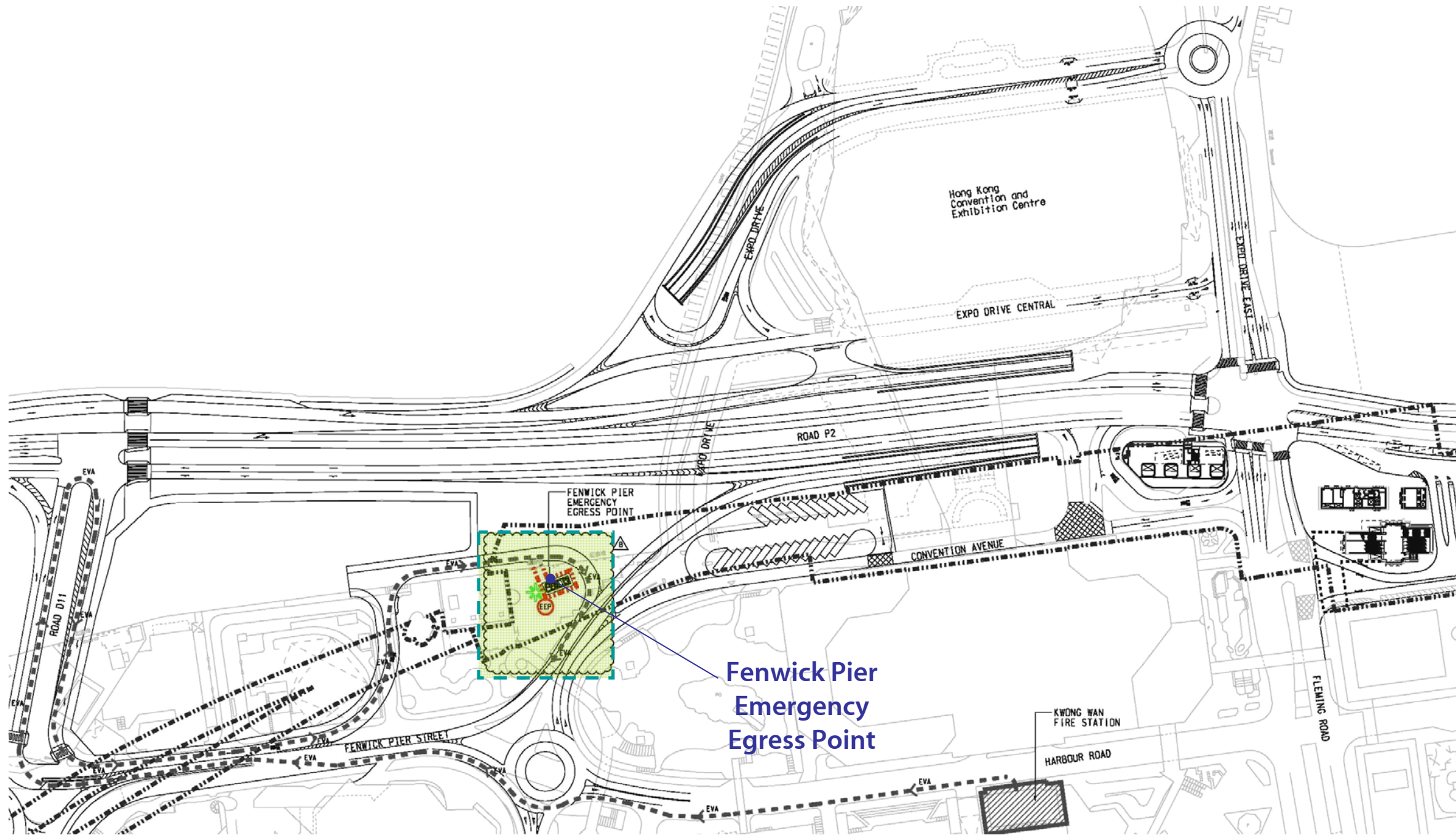
Preliminary Boundary of the Potential Topside Development (By others)



Artist Impression [View 2]

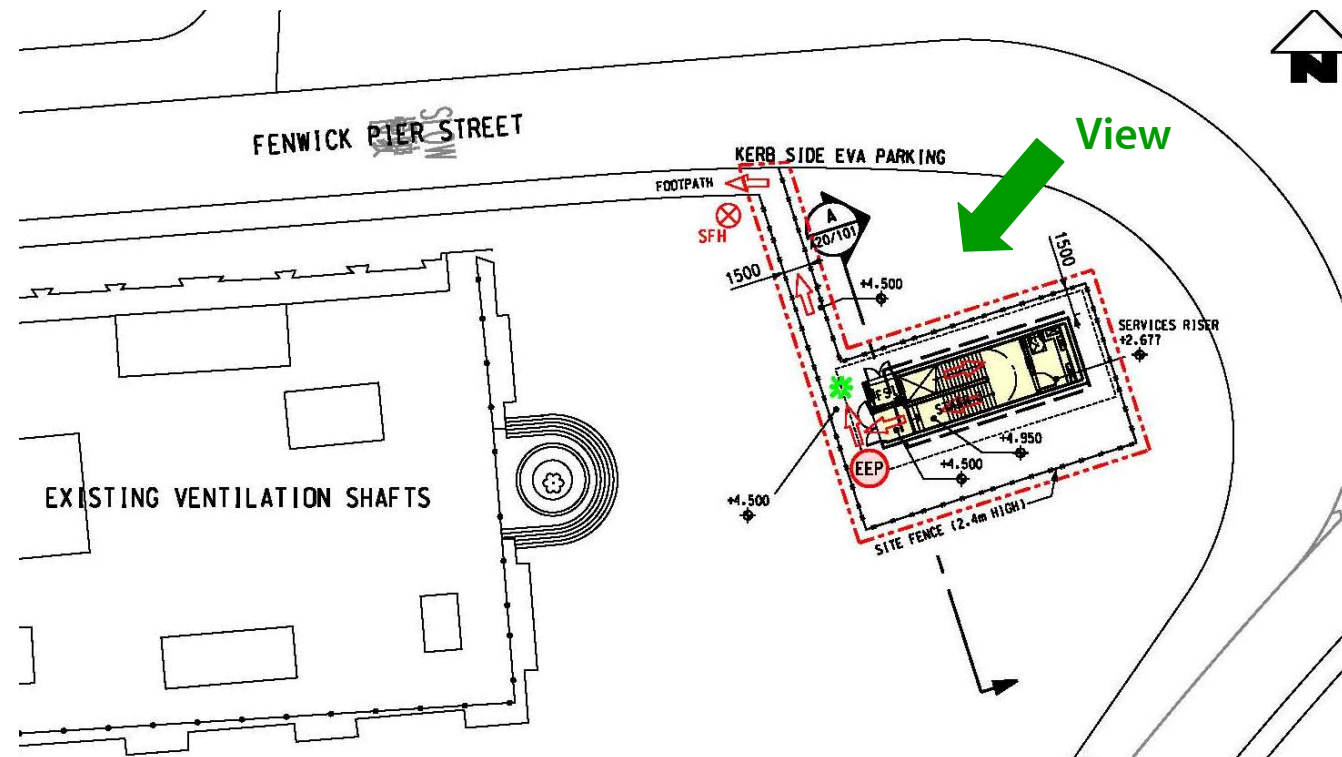
## C) Update on Fenwick Pier Emergency Egress Point

# Fenwick Pier Emergency Egress Point



Location Plan

# Fenwick Pier Emergency Egress Point



G/F Plan



Artist Impression

Thank You