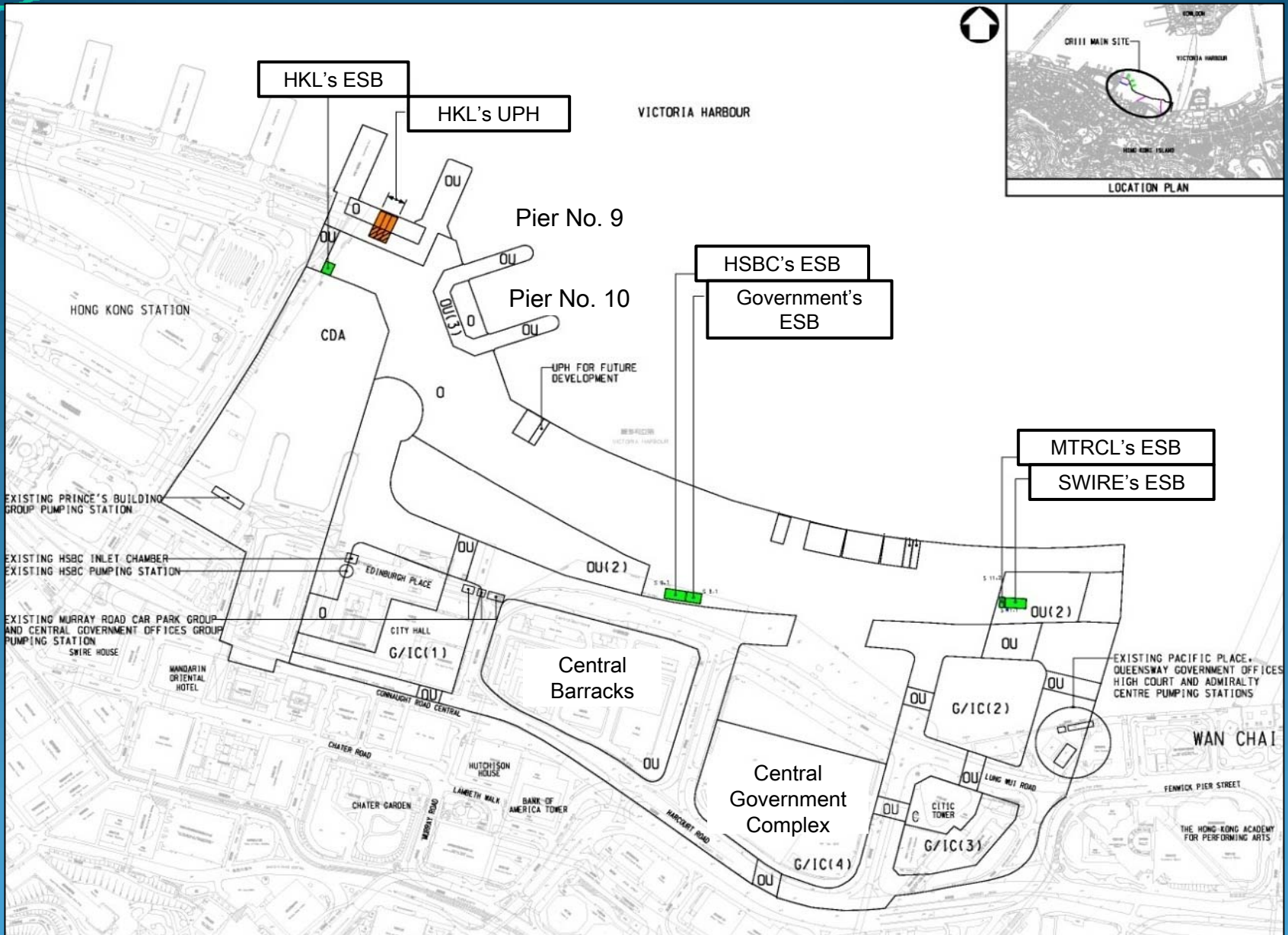


**Facade Treatment Proposals for
Five Electricity Supply Buildings and
the Ventilation Shafts of an Underground Pumphouse
under the Central Reclamation Phase III Project**

24 October 2013

Civil Engineering and Development Department

Background - Location Plan



Existing ESBs at Lung Wo Road



Existing ESBs at the Central and Western District Promenade (Central Section)



Existing ESB at Man Yiu Street



Background

2006

- Permission from TPB on land use for 5 ESBs and 1 UPH was required
- Section 16 Application TPB/A/H24/8 submitted and approved by TPB in 2006

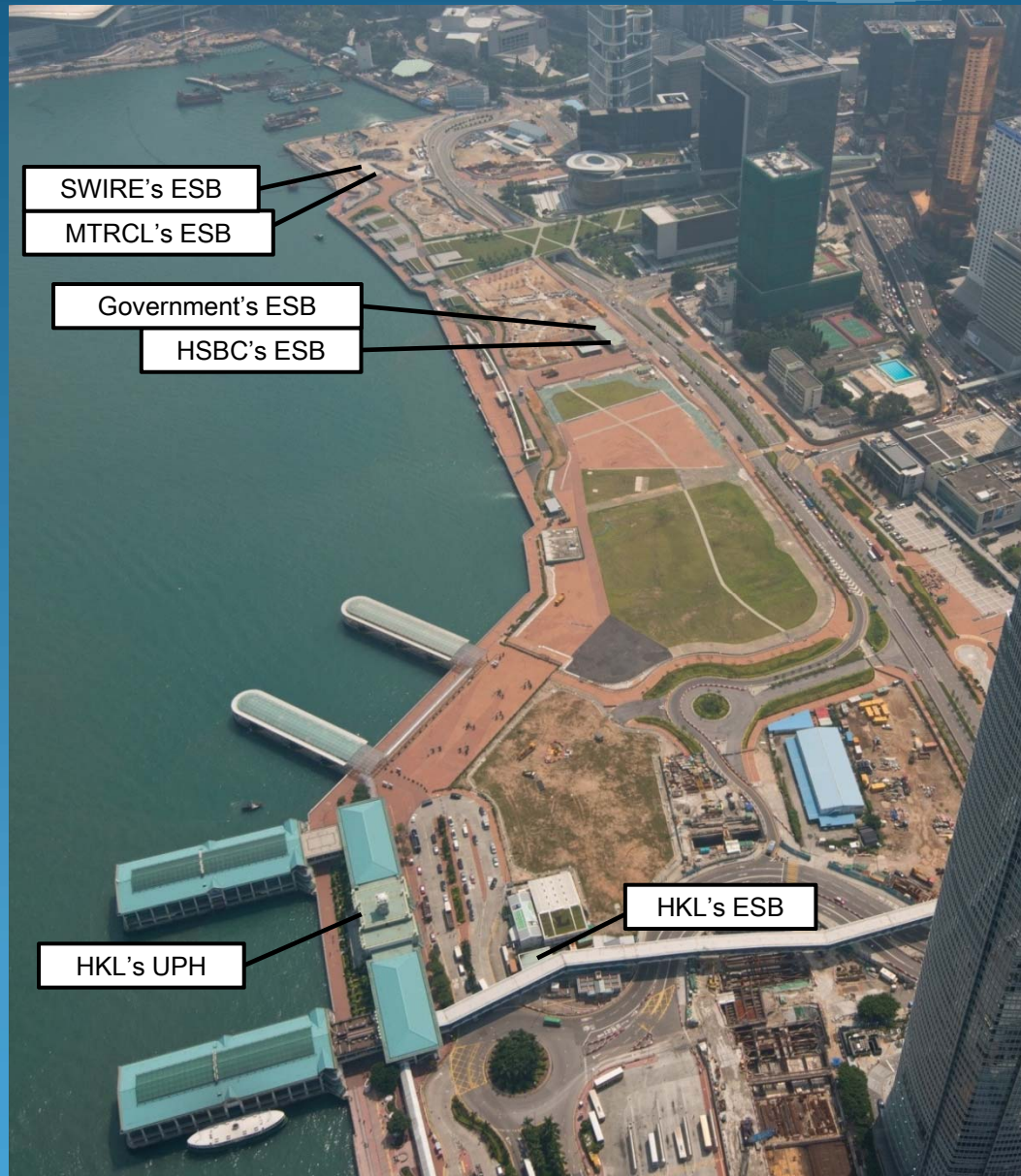
2010

- Revised orientation of 2 ESBs (MTRCL and Swire)
- Section 16 Application TPB/A/H24/18 submitted and approved by TPB in 2010

Extract of the Approval Conditions imposed by TPB in 2006 & 2010

- (i) the **design of the facade treatment** of the ventilation shafts of the proposed underground pumphouse and the proposed electricity supply buildings to the satisfaction of the Town Planning Board;
- (ii) the **implementation of the facade treatment** to the satisfaction of the Director of Architectural Services or of the Town Planning Board;
- (iii) the **submission of a landscape proposal** to the satisfaction of the Town Planning Board; and
- (iv) the **implementation of a landscape proposal** to the satisfaction of the Town Planning Board.

New Central Harbourfront

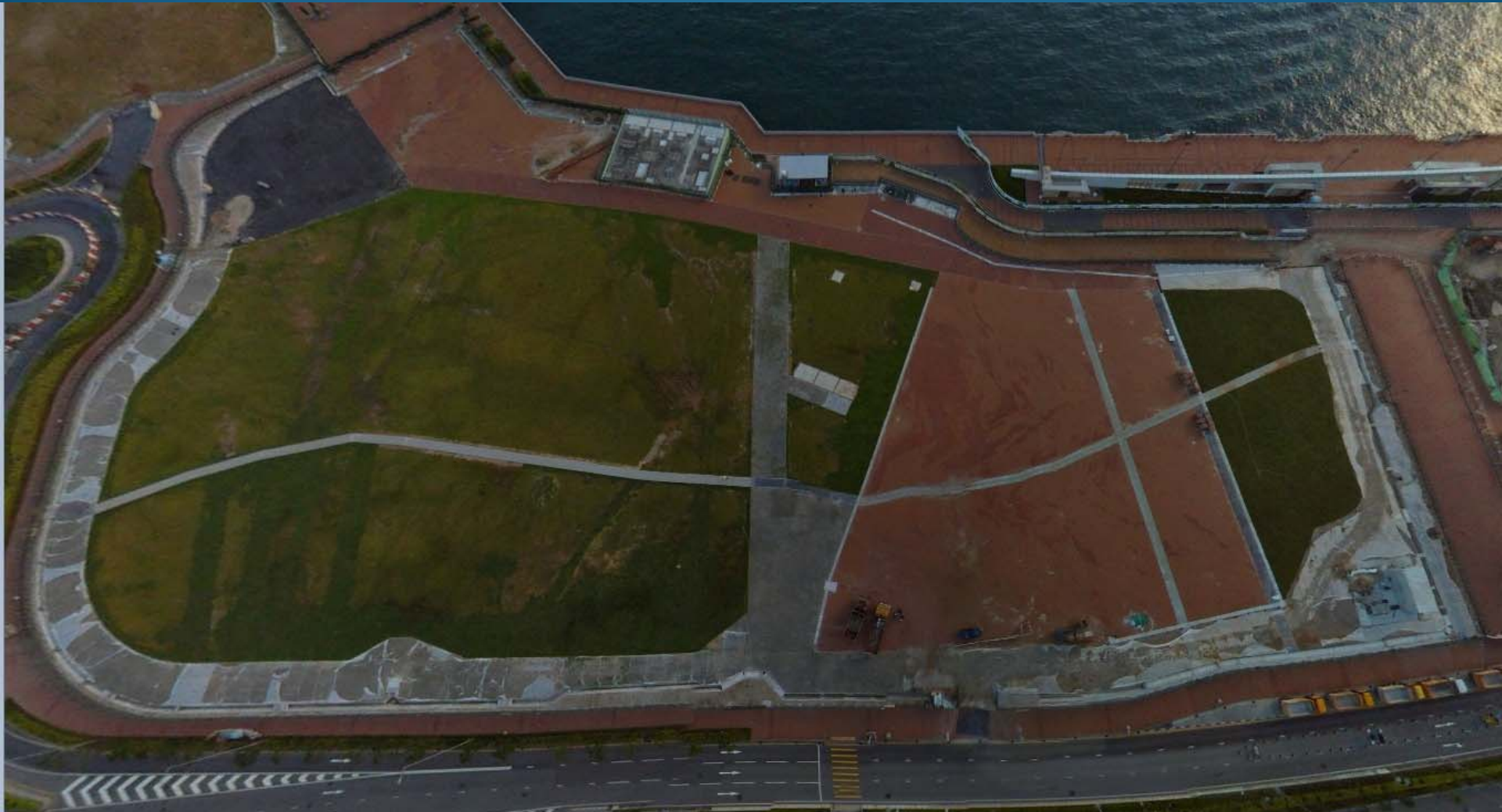


Bird's View

New Central Harbourfront



Areas D and E (Event Site)



Areas F and G (Public Open Space and Pet Garden)





Echo with Central Government Offices setting (timber strips with climbers)



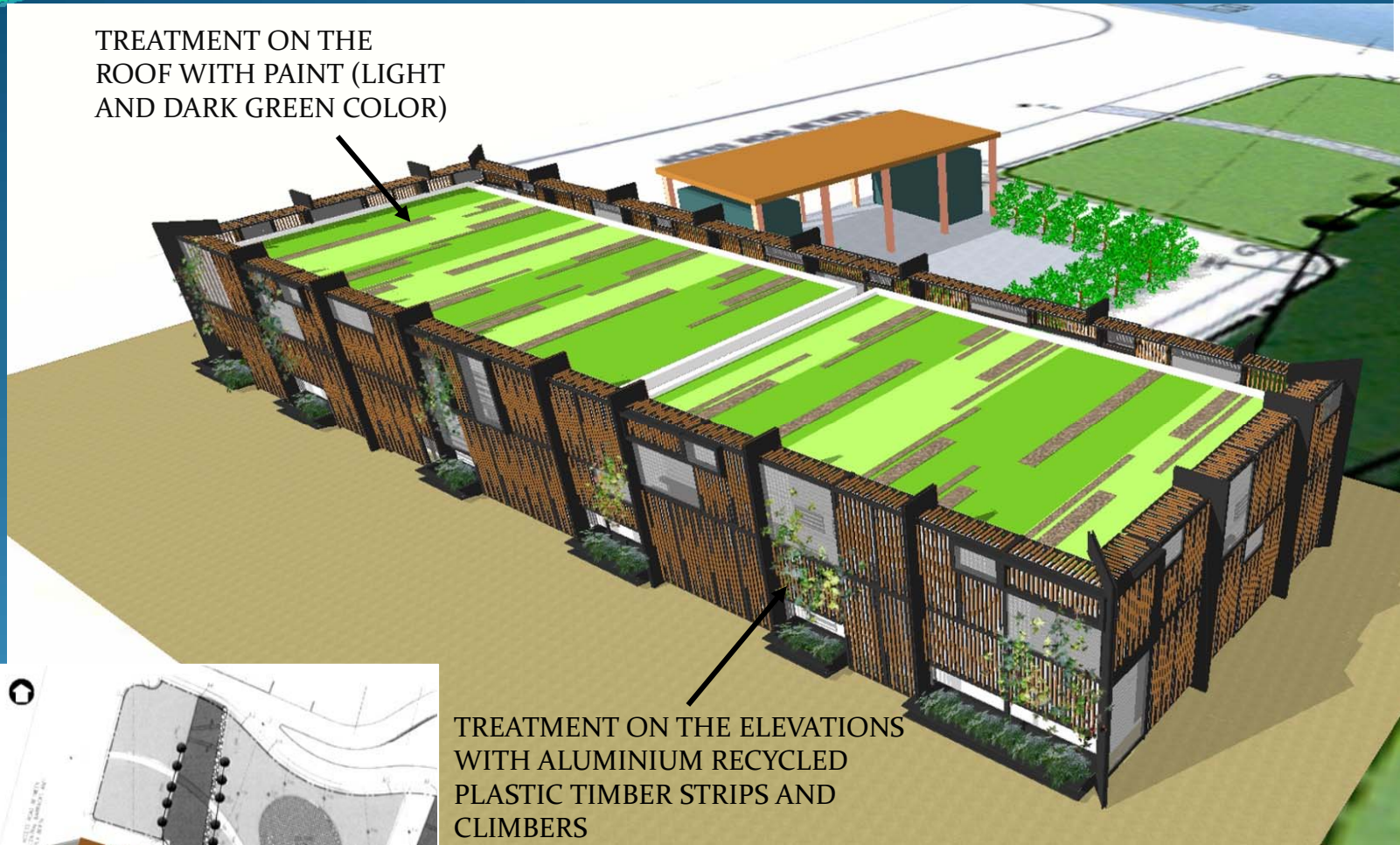
Echo with Tamar Park setting (greening elements)

Option 1 – Facade Treatment to ESBs



VIEW

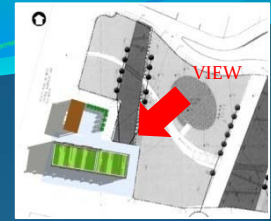
TREATMENT ON THE ROOF WITH PAINT (LIGHT AND DARK GREEN COLOR)



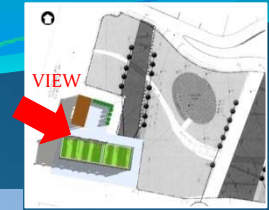
TREATMENT ON THE ELEVATIONS WITH ALUMINIUM RECYCLED PLASTIC TIMBER STRIPS AND CLIMBERS



ESBs at Area F – Perspective View (From Lung Wo Road)



Side View (From Public Open Space in Area F)

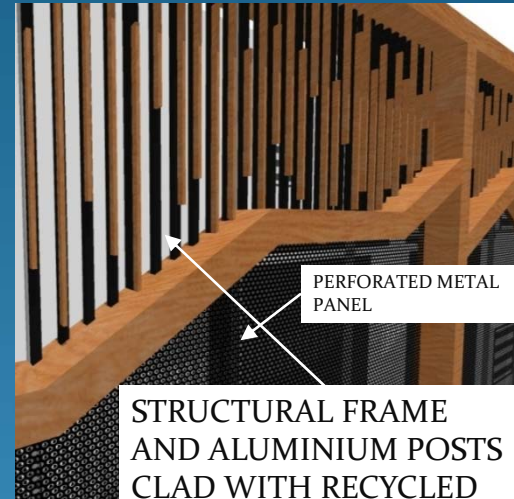


ESBs at Area F – Side View
(From Access Road between the Central & Western District Promenade (Central Section))

Option 2 – Facade Treatment to ESBs

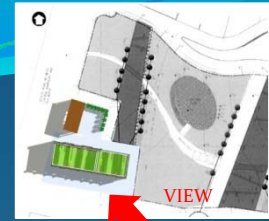


Trees in Forest
The tree trunks show the feeling of vitality.



PERFORATED METAL PANEL

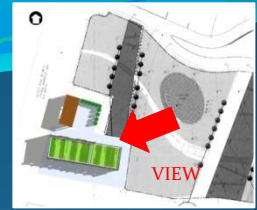
STRUCTURAL FRAME AND ALUMINIUM POSTS CLAD WITH RECYCLED PLASTIC TIMBER STRIPS



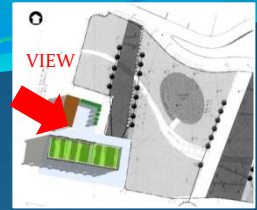
TREATMENT ON THE ROOF WITH PAINT (LIGHT AND DARK GREEN COLOR)



ESBs at Area F – Perspective View (From Lung Wo Road)



Side View (From Public Open Space in Area F)



ESBs at Area F – Side View
(From Access Road between the Central & Western District Promenade (Central Section))

Option 3 – Facade Treatment to ESBs



TREATMENT ON THE ROOF WITH PAINT (LIGHT AND DARK GREEN COLOR)



TREATMENT ON THE ELEVATIONS WITH RECYCLED PLASTIC TIMBER COMPOSITE

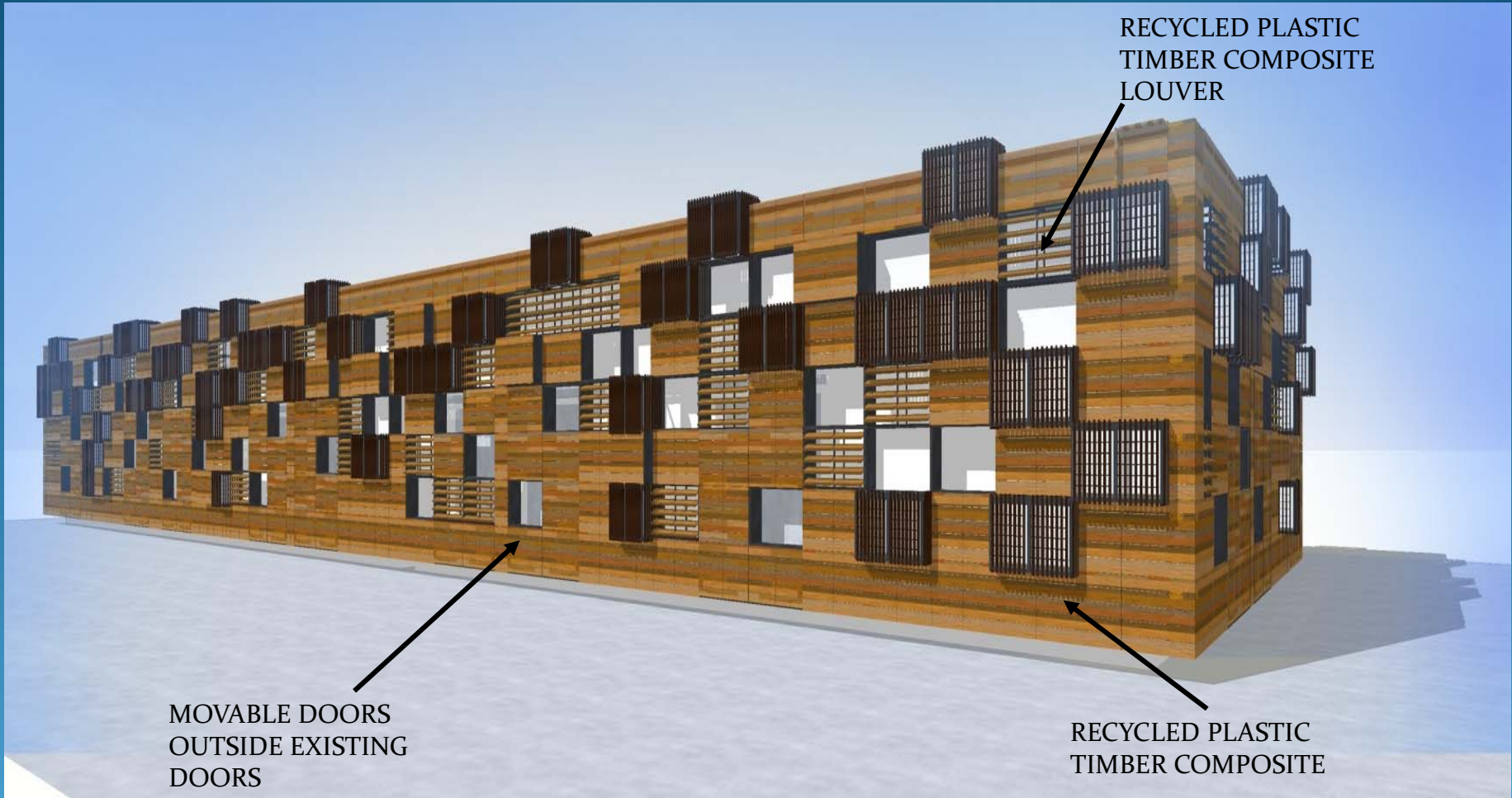


RECYCLED PLASTIC TIMBER COMPOSITE LOUVER



VIEW

ESBs at Area F – Perspective View (From Lung Wo Road)



RECYCLED PLASTIC
TIMBER COMPOSITE
LOUVER

MOVABLE DOORS
OUTSIDE EXISTING
DOORS

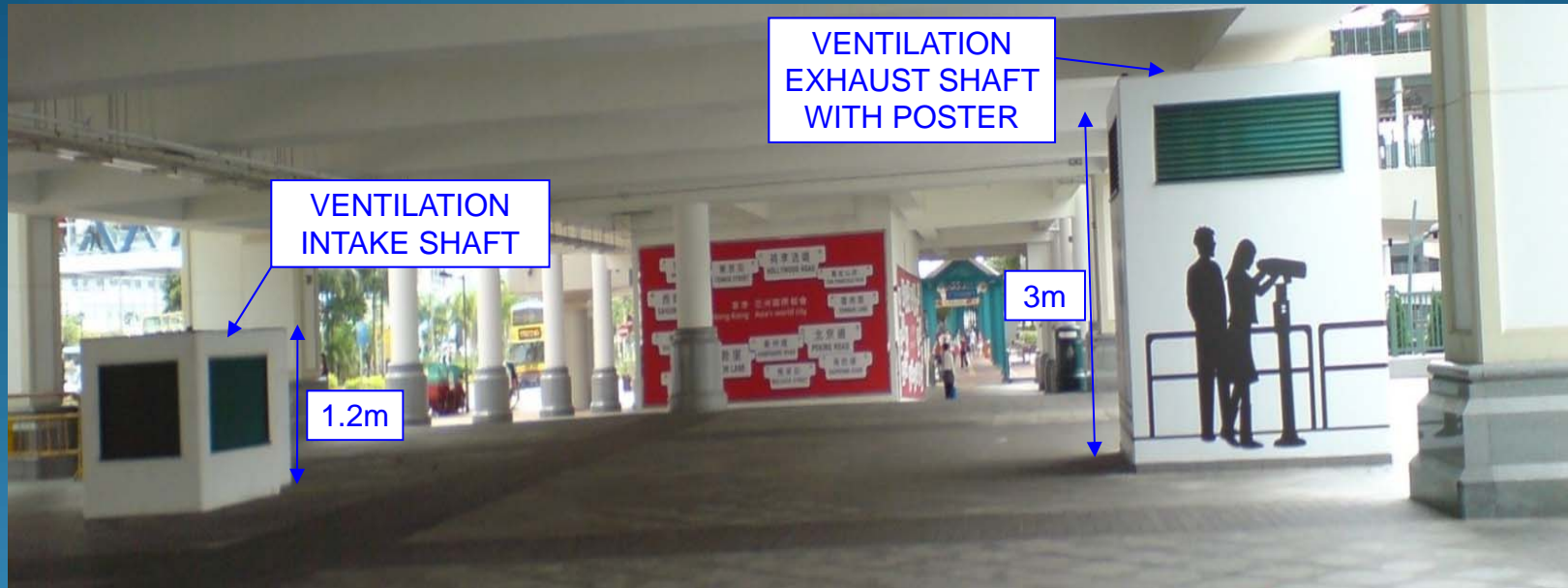
RECYCLED PLASTIC
TIMBER COMPOSITE

ESBs at Area F – Side View
(From Access Road between the Central & Western District Promenade (Central Section))

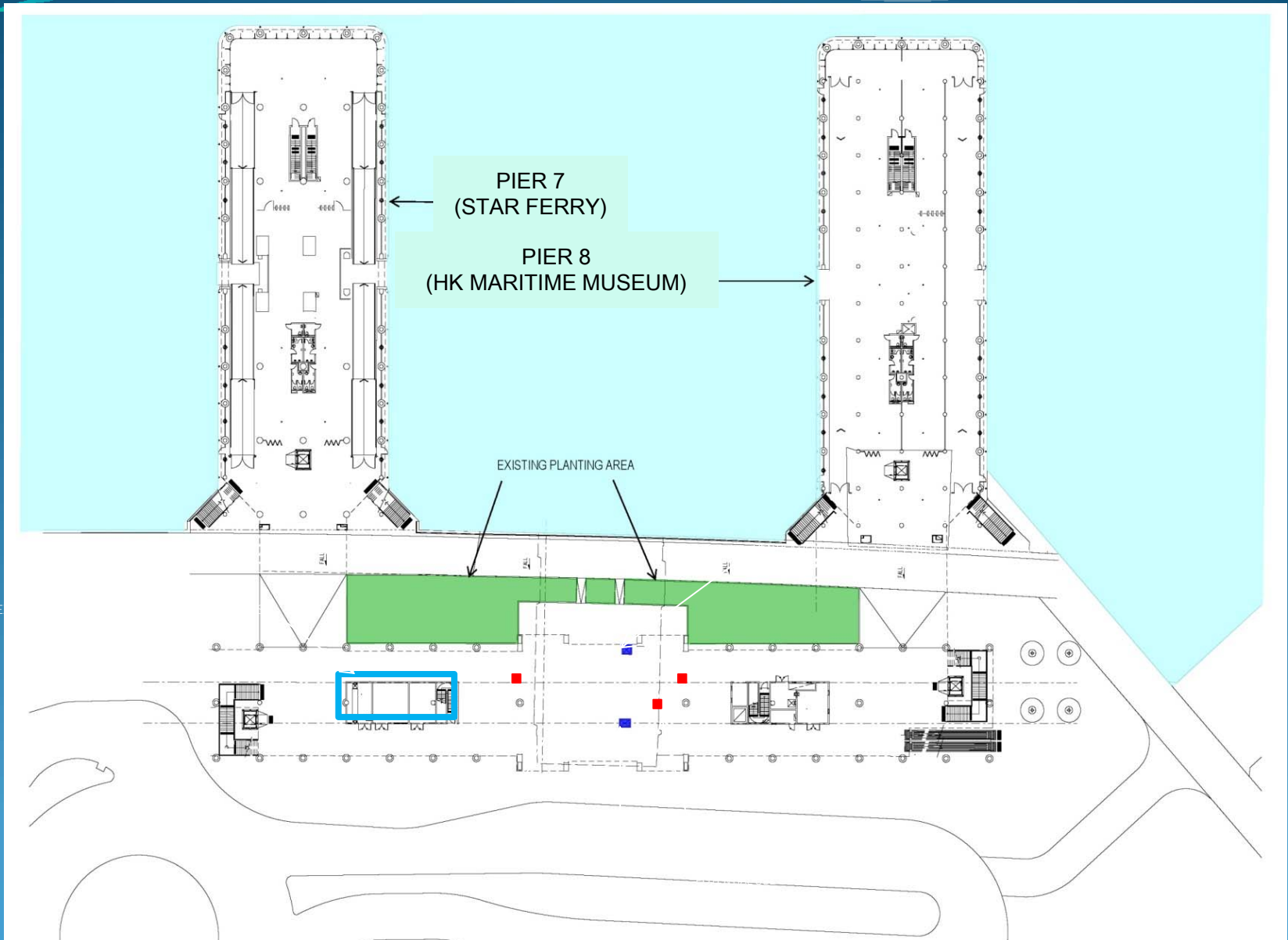
Ventilation Shafts at Central Terminal Building



Existing Condition at the Ground Floor of Central Terminal Building



Conceptual Plan for Provision of “Cube” Seating



Conceptual Plan for Provision of “Cube” Seating



Way Forward

- Welcome Members' views
- Brief C&W DC
- Refine the design based on comments received
- Submit enhancement proposals to TPB for approval

END