



中環及灣仔繞道和東區走廊連接路

隧道大樓的外觀設計

Central-Wan Chai Bypass and Island Eastern Corridor Link Exterior Design of Tunnel Buildings

港島區海濱發展專責小組
Task Force on the Harbourfront
Developments on Hong Kong Island

2012年7月31日
31 July 2012



分區計劃大綱核准圖 S/H8/24 - 北角

(東面通風大樓及行政大樓)

Outlined Zoning Plan S/H8/24 – North Point (EVB and ADB)



分區計劃大綱核准圖 S/H25/2 - 灣仔北 (東面排風口)

Outlined Zoning Plan S/H25/2 – Wan Chai North (EVS)



中環灣仔繞道和東區走廊連接路
通風大樓、東面排風口及行政大樓的外觀設計公眾諮詢

Central - Wan Chai Bypass and Island Eastern Corridor Link
Public Consultation for Exterior Design of Ventilation Buildings, East Vent Shaft and Administration Building

隧道大樓外觀設計公眾諮詢
(由2009年7月至2012年7月)

Public Consultations on Exterior
Design of Tunnel Buildings
(July 2009 to July 2012)



路政署

Highways Department



公眾諮詢宣傳小冊子及意見表格 Leaflet and Questionnaire



巡迴展覽 Roving Exhibition



曾於2010年7月29日至9月3日，舉行巡迴展覽收集市民對外觀設計的意見。

Roving exhibition was held from 2010.7.29 to 2010.9.3

簡報會

Briefing Sessions to Stakeholders

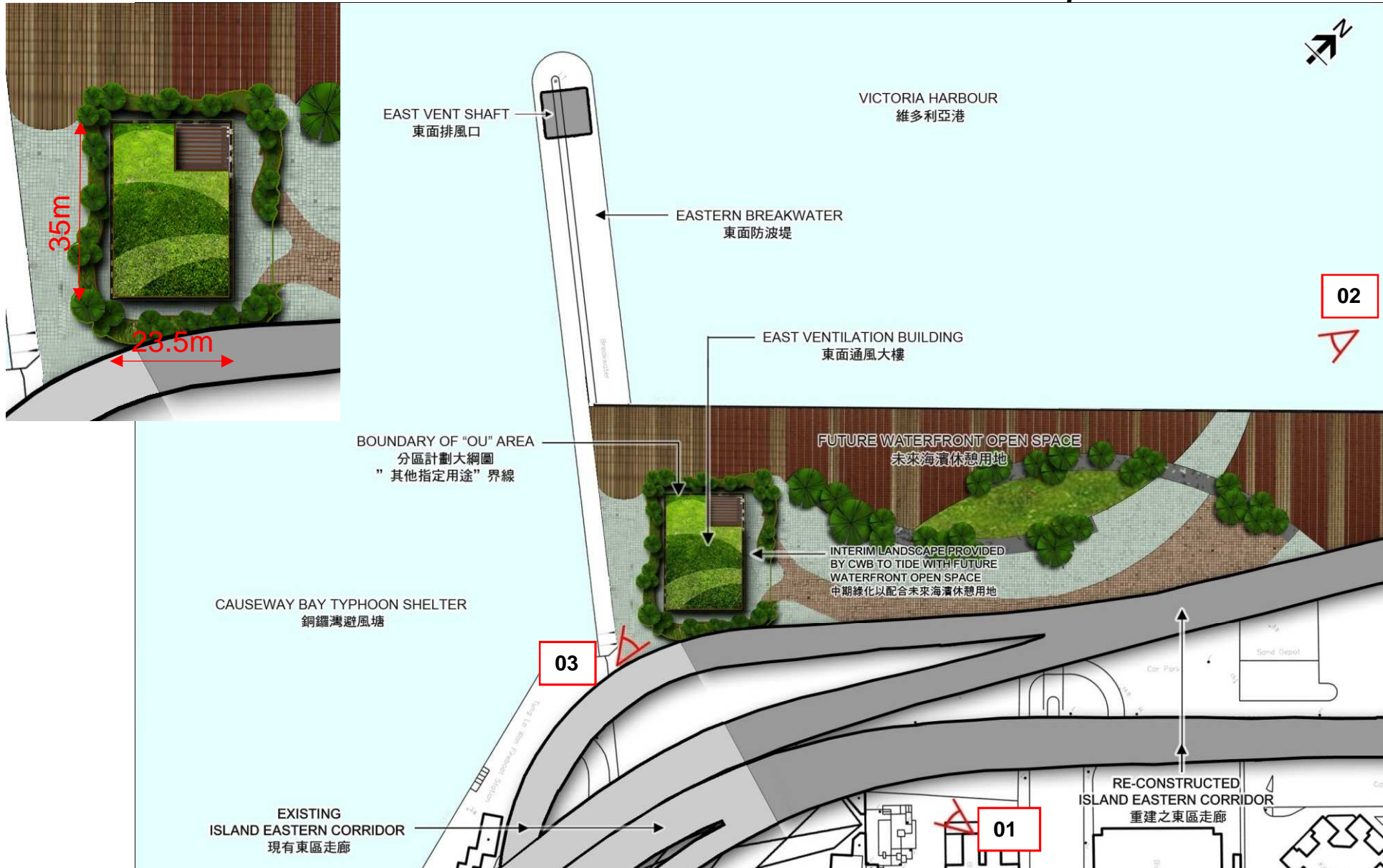


公眾參與活動的簡要

Summary of Public Engagement Exercise

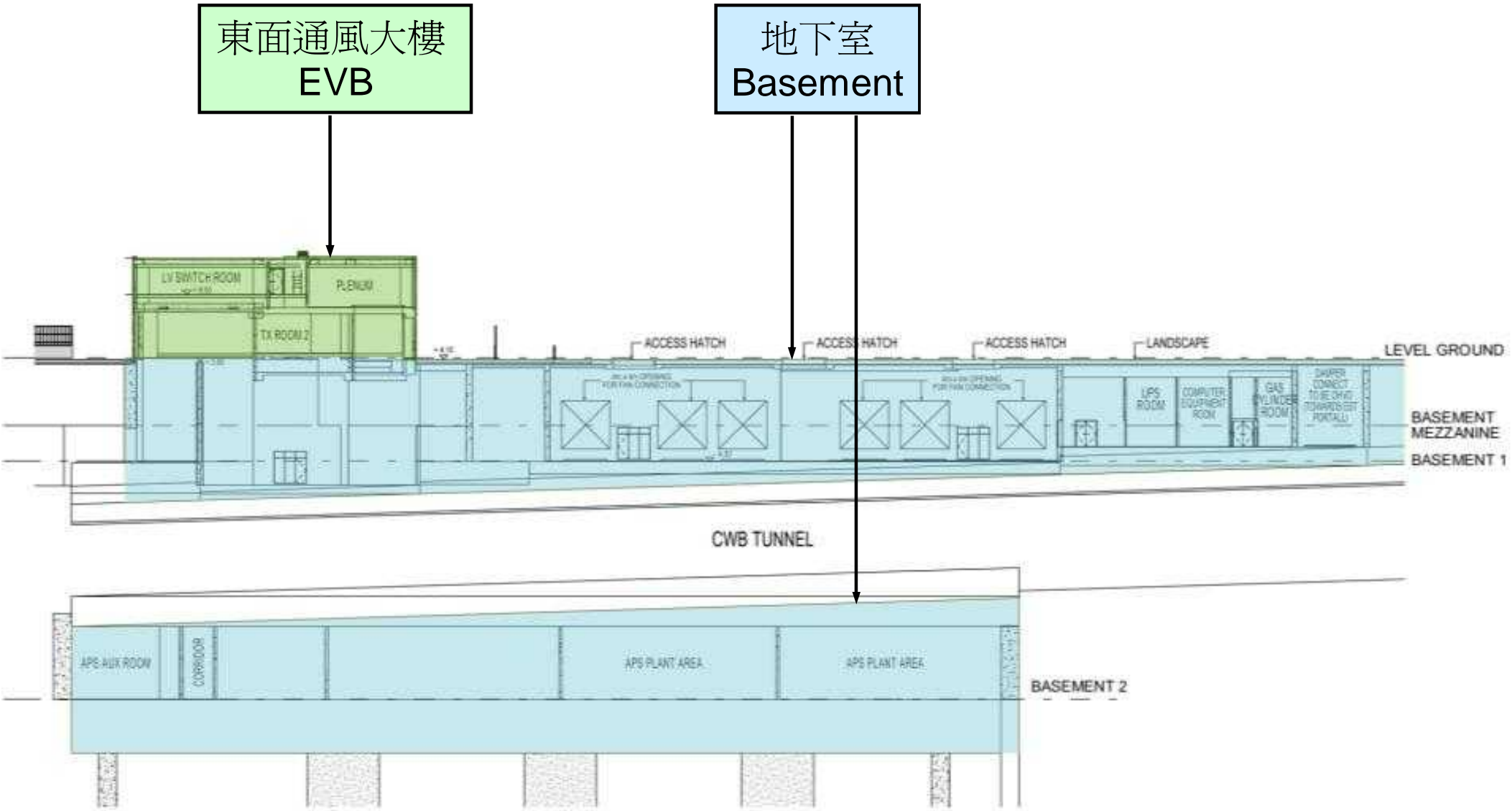
日期 Date	公眾參與活動 Public Engagement Exercises
14-07-2009	東區區議會 Eastern District Council (EDC) Meeting
29-03-2010	東區區議會 EDC Meeting
29-07-2010 to 03-09-2010	巡迴展覽 Roving Exhibition
16-09-2010	海濱事務委員會 - 向委員會報告巡迴展覽的結果 Harbourfront Commission Meeting – Reporting the results of Roving Exhibition to the Committee
21-12-2010	東區區議會 EDC Meeting
27-01-2011	海濱事務委員會 Harbourfront Commission Meeting
24-02-2011	與維多利中心的會議 Meeting with Victoria Centre
17-03-2011	東區區議會 EDC Meeting
25-05-2011	社區聯絡小組會議 Community Liaison Group Meeting
10-08-2011	維多利中心的簡報會 Briefing Session for Victoria Centre
01-03-2012	東區區議會 EDC Meeting
06-03-2012	與東區區議員及維多利中心管理處的會議 Meeting with EDC members and Victoria Centre Management Office
27-04-2012	東區區議會 EDC Meeting
01-06-2012	海濱事務委員會 (以傳閱文件方式) – 委員會的意見已於2012年7月19日回應 Harbourfront Commission Meeting (by circulation) – Responses to HC's comments was submitted on 19 July 2012
05-07-2012	向城市規劃委員會遞交外觀設計許可申請 Town Planning Submission

東面通風大樓 East Ventilation Building



The East Ventilation Building (EVB) will be located at the edge of the future open space at North Point harbourfront. The design theme of greening leisure is adopted in harmony with the surrounding environment. 東面通風大樓位於未來北角海岸休憩用地旁，大樓建築將配合區內海濱長廊環境，設計上以綠化休閒為主題。

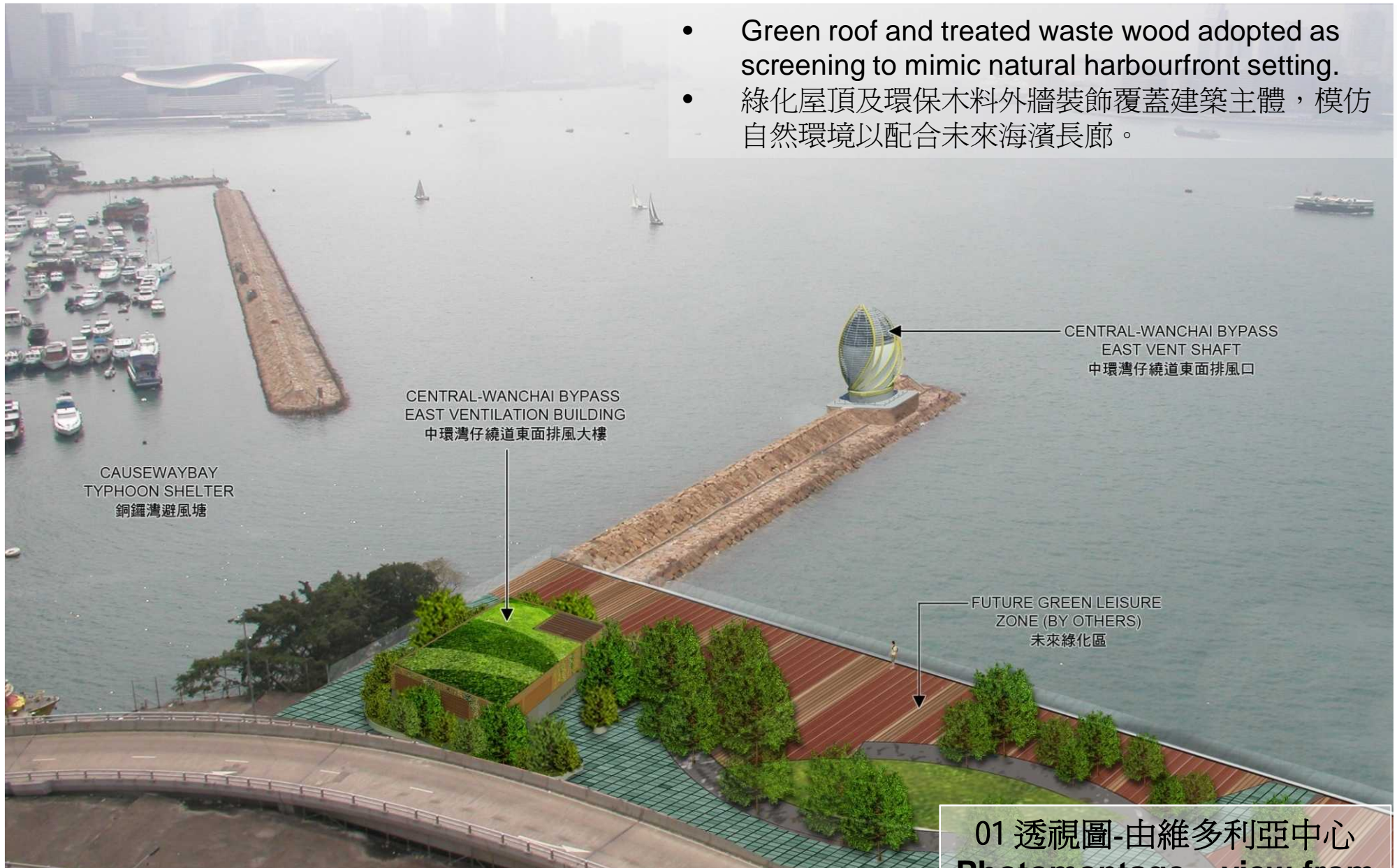
東面通風大樓 - 縱切面 EVB - Longitudinal Section



東面通風大樓

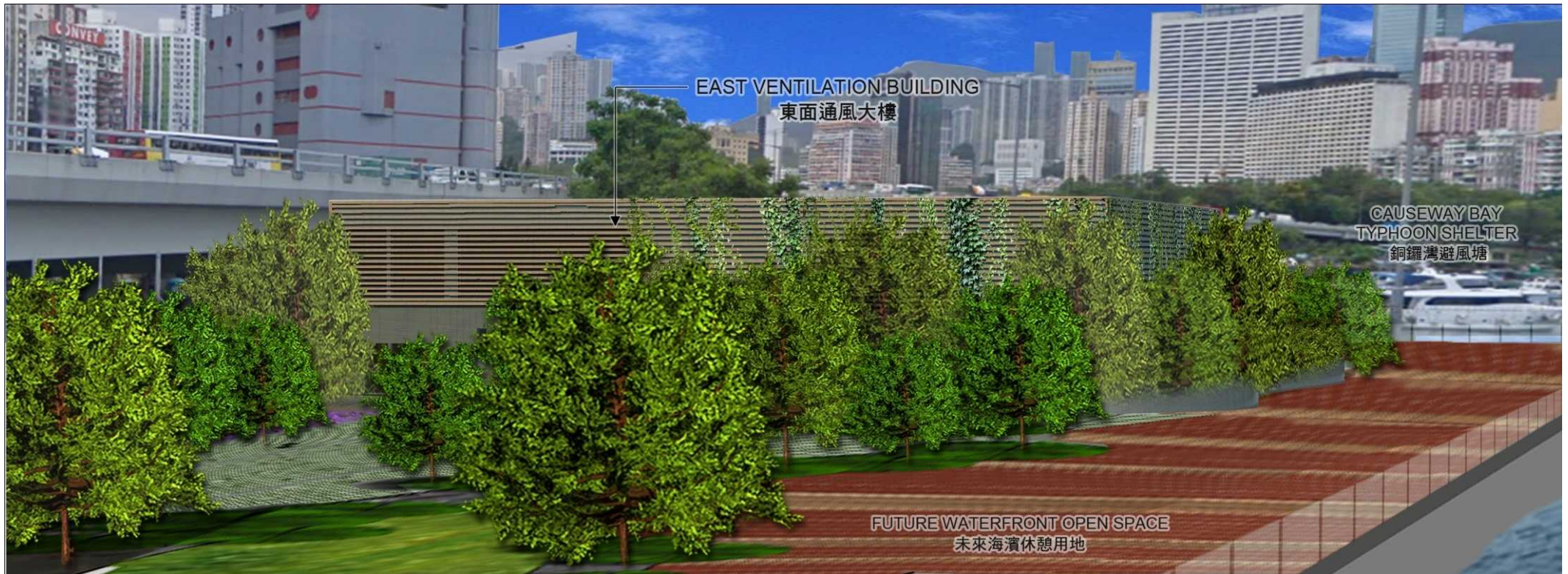
East Ventilation Building

- Green roof and treated waste wood adopted as screening to mimic natural harbourfront setting.
- 綠化屋頂及環保木料外牆裝飾覆蓋建築主體，模仿自然環境以配合未來海濱長廊。



01 透視圖-由維多利亞中心
Photomontage – view from
Victoria Centre

東面通風大樓 East Ventilation Building



- scrubs and climbing plants around the building aesthetically soften the building mass
- 灌木和攀藤植物佈置在建築物的周圍，以軟化建築物主體的感覺。

02 透視圖-由官塘海傍
Photomontage – view from
Kwun Tong seaside

東面通風大樓 East Ventilation Building



03 透視圖-由東面防波堤
Photomontage – view from
Eastern Breakwater


東面通風大樓

East Ventilation Building



LEGEND

--- APPLICATION SITE BOUNDARY

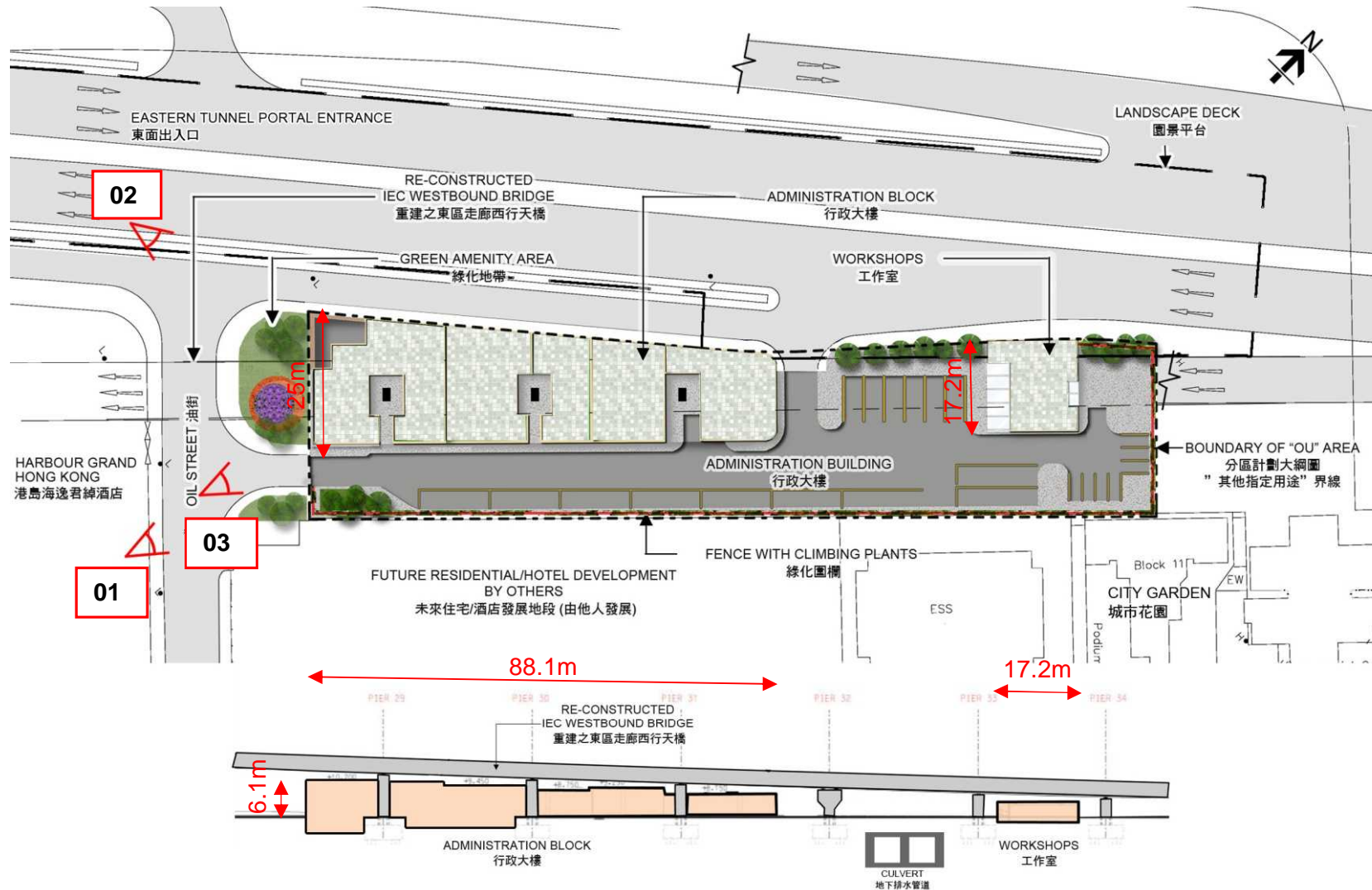
 NEW TREE PLANTING (INCLUDED IN THIS SUBMISSION)

1 TREE AND SHRUB PLANTING AREA
- maximise the green opportunities at street level, screen off the ventilation building from public and merge with future Waterfront Open Space.

2 GREEN ROOF
- create a green space on top off buiding to soften the character of ventilation building to lccal residents.

大樓週邊綠化圖
Landscape Plan

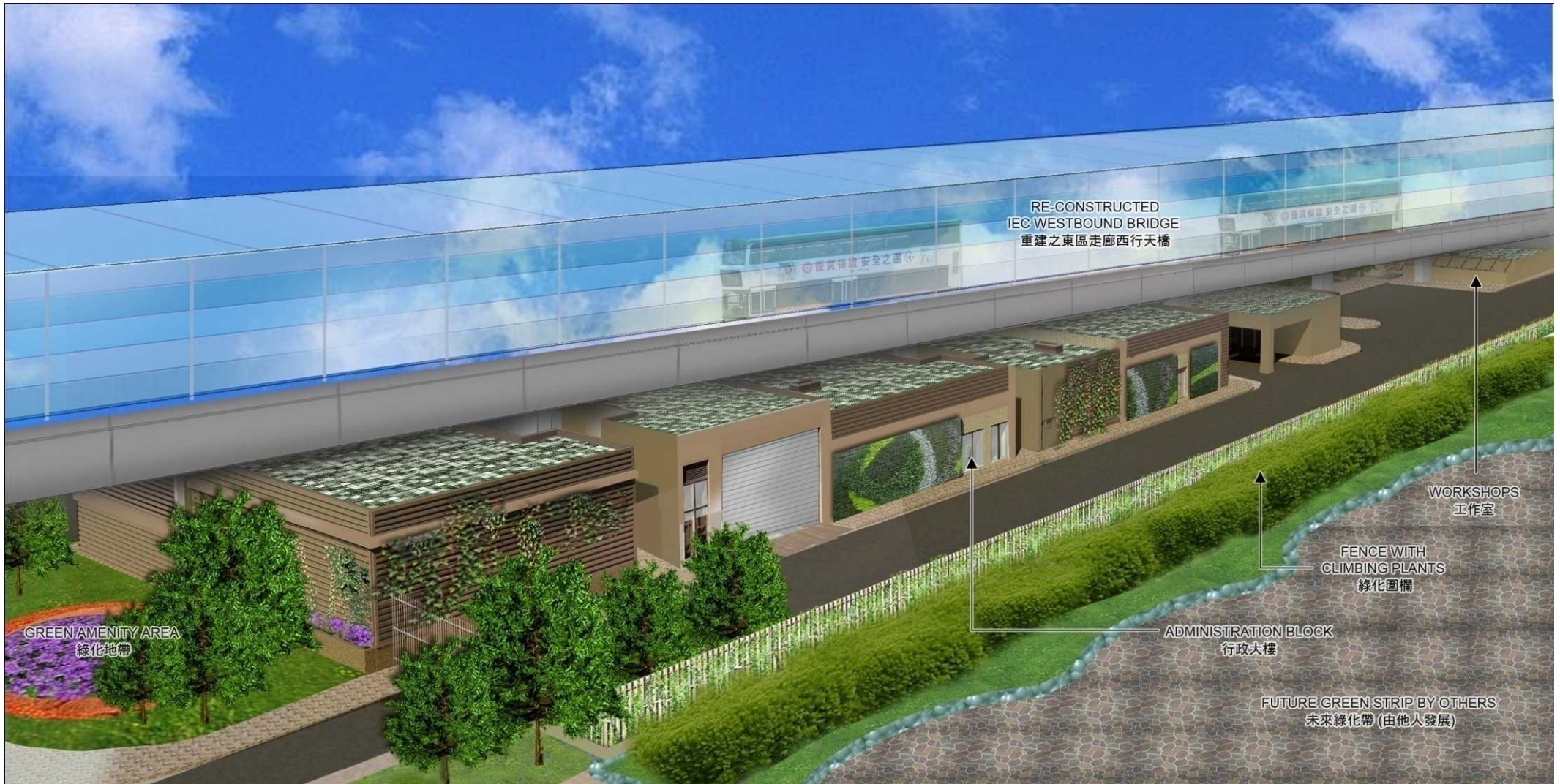
行政大樓 Administration Building



The Administration Building (ADB) will be located under the reconstructed Island Eastern Corridor westbound flyover, next to Oil Street, North Point. It serves as a control base to oversee the daily operation of the CWB tunnel.

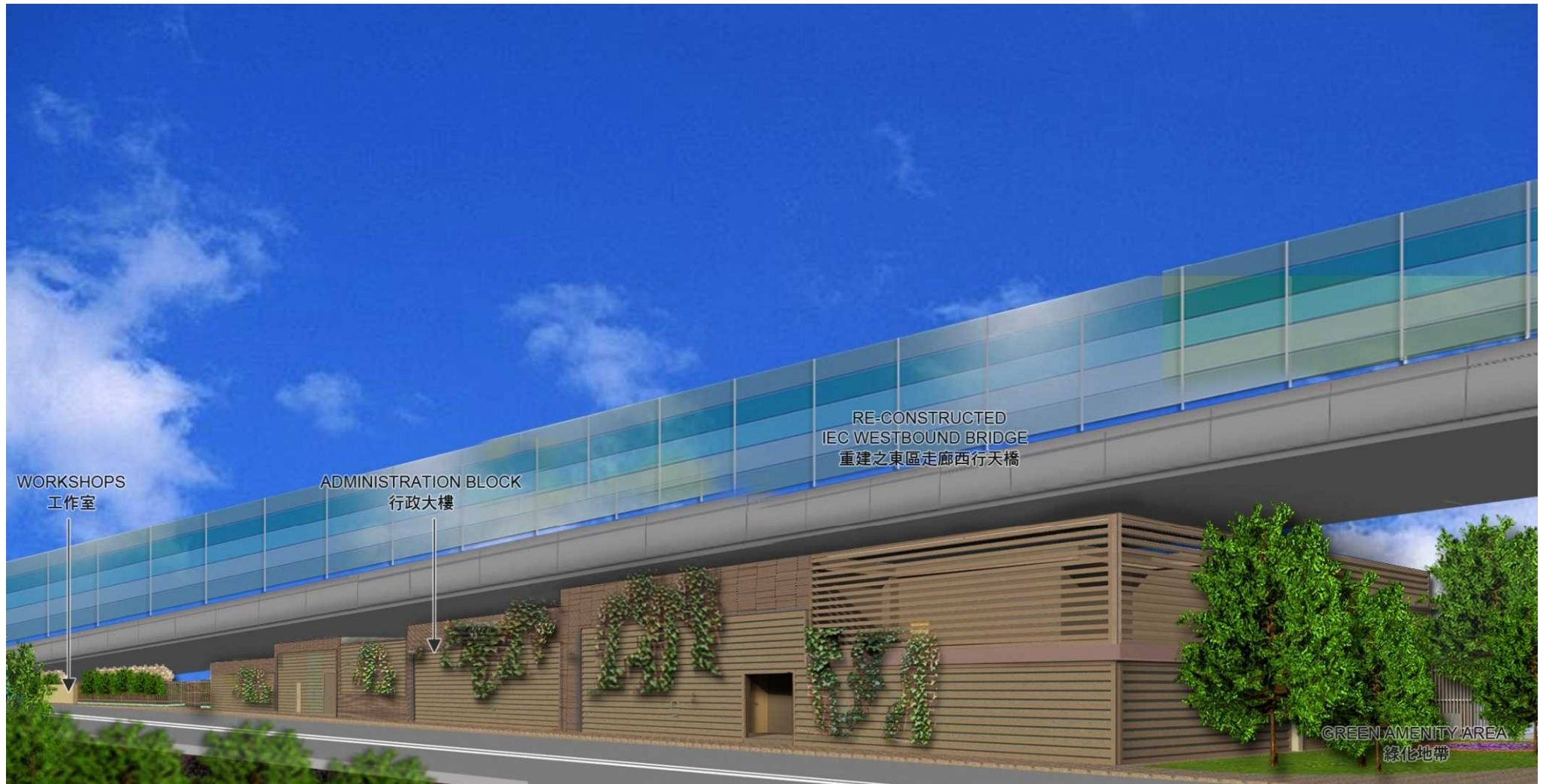
行政大樓位於北角油街旁，重建後的東區走廊西行橋底。行政大樓會用作監控主幹道日常營運。

行政大樓 Administration Building



- Climbing plants and green wall are adopted to maximize greening opportunities to the surrounding. 攀藤植物和綠化牆用於行政樓，為周邊提供綠化環境。

行政大樓 Administration Building



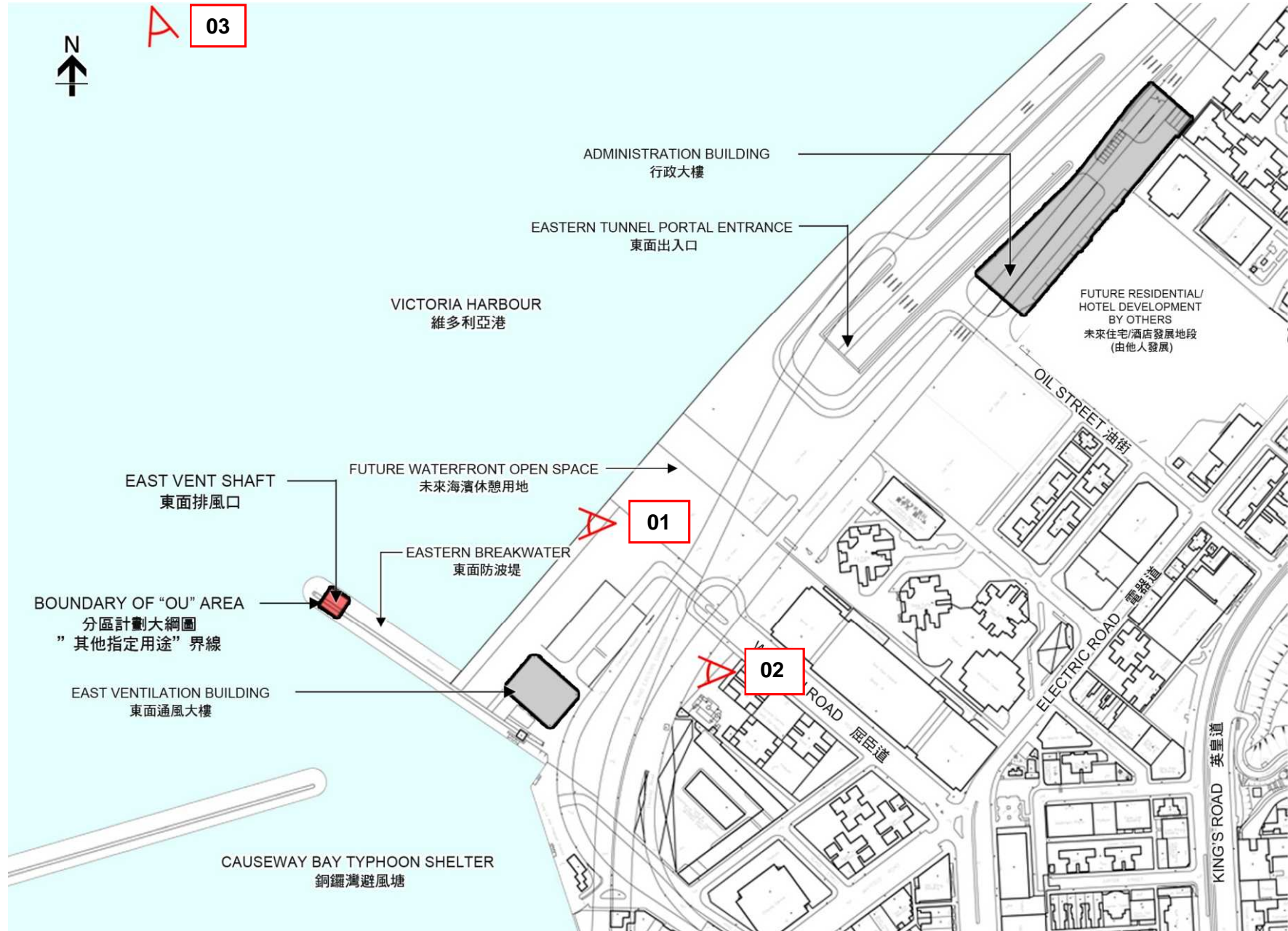
- Green roof and treated waste wood adopted as screening to mimic natural harbourfront setting.
- 綠化屋頂及環保木料外牆裝飾覆蓋建築主體，模仿自然環境以配合未來海濱長廊。

行政大樓 Administration Building



- Green roof and treated waste wood adopted as screening to mimic natural harbourfront setting.
- 綠化屋頂及環保木料外牆裝飾覆蓋建築主體，模仿自然環境以配合未來海濱長廊。

東面排風口 East Vent Shaft



東面排風口

East Vent Shaft

- Echo with the metal roof of Hong Kong Convention and Exhibition Centre
與香港會議展覽中心新翼金屬上蓋互相呼應
- to create an abstract and twisted form of sails on the harbour.
於海港內創建出一個以多帆旋轉的雕塑形排風口。
- Stands a sculptural landmark in the North Point and CBTS area.
矗立於北角和銅鑼灣避風塘的雕塑形地標

+25.0mPD TOP
OF ARCHITECTURAL
FEATURE

EXHAUST LOUVER

METAL LOUVER

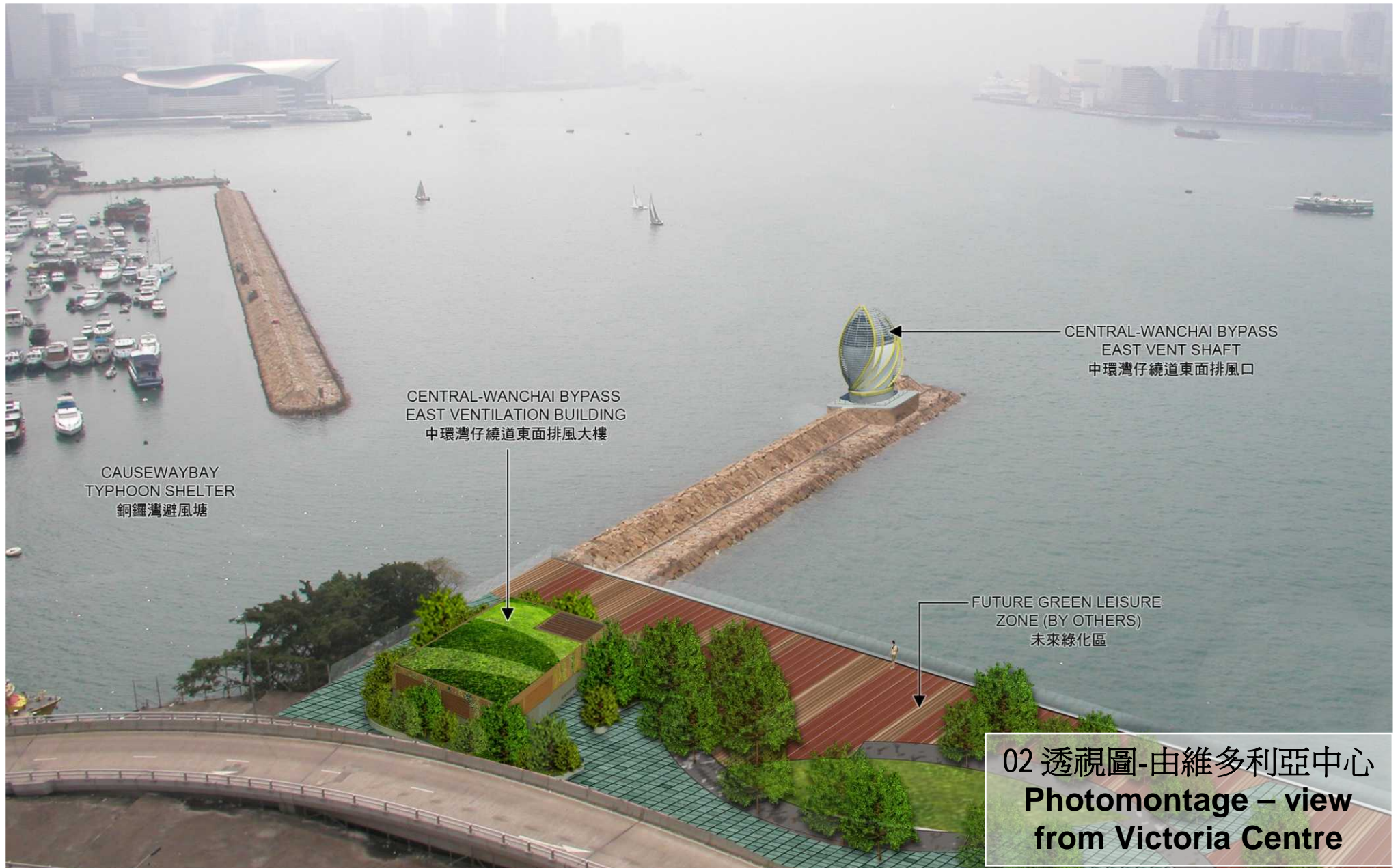
METAL FINNS

WALL TILES

+5.2mPD

01 透視圖-由未來海濱休憩用地
Photomontage – view from Future
Waterfront Open Space

東面排風口 East Vent Shaft



東面排風口 East Vent Shaft



03 透視圖-由紅磡海傍
Photomontage – view from
Hung Hom seaside

連接未來海濱 Access to Future Waterfront



多謝

Thank You