

# ***North Point Harbourfront***



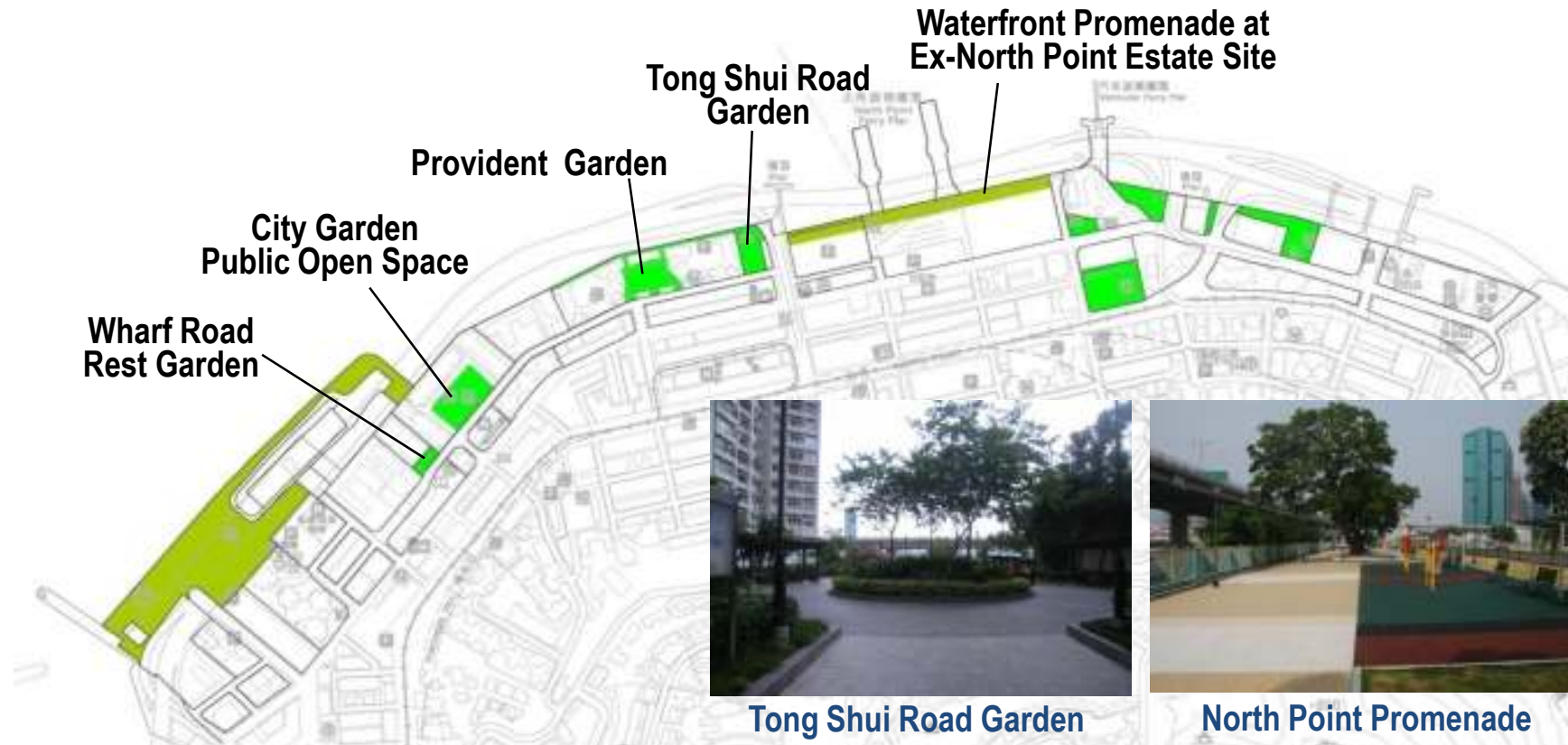
# North Point Outline Zoning Plan



• • • • *Indicative harbourfront areas under Harbour Planning Guidelines*



# Open Space



Wharf Road Rest Garden

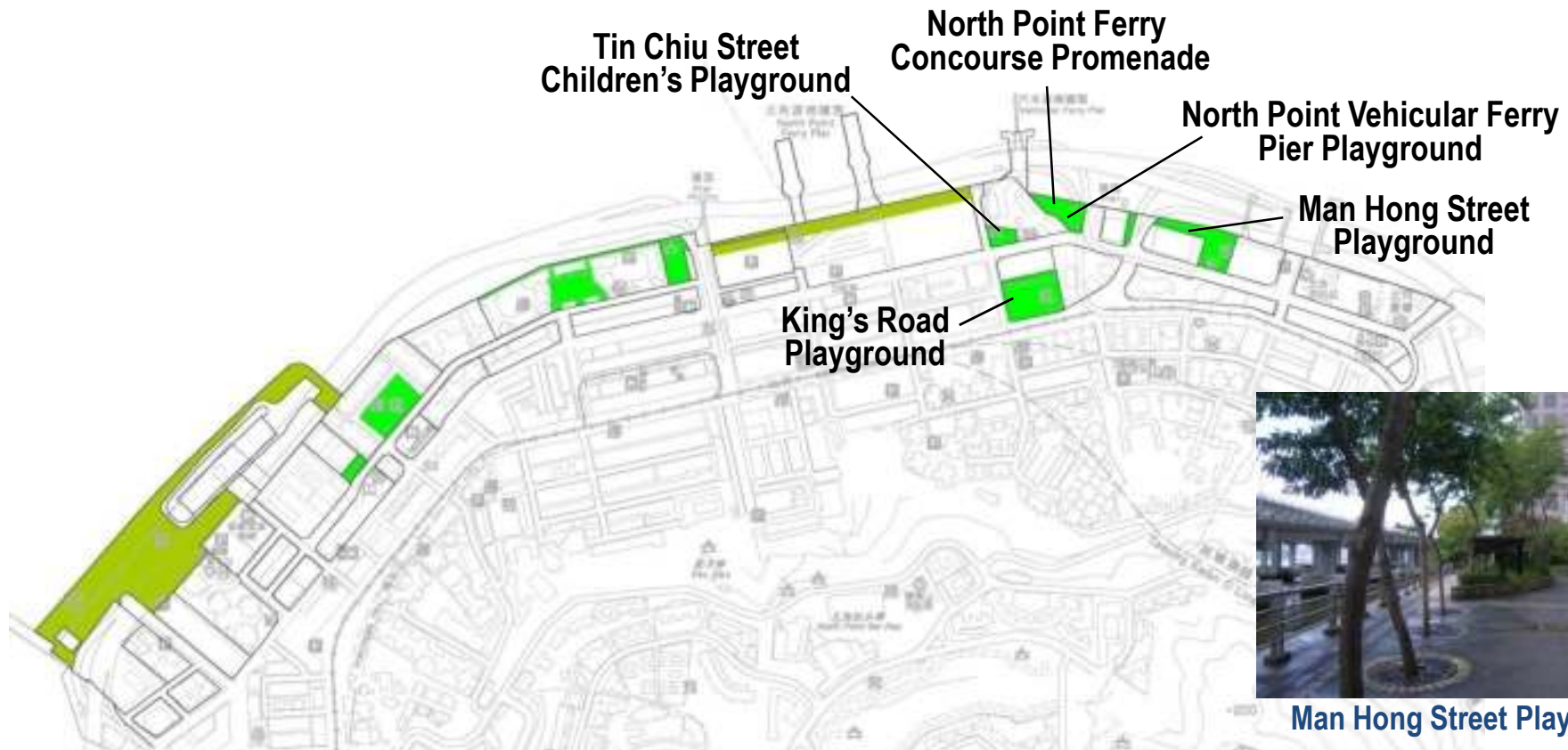


City Garden Public Open Space



Provident Garden

# Open Space



Man Hong Street Playground



Tin Chiu Street Children's Playground



King's Road Playground



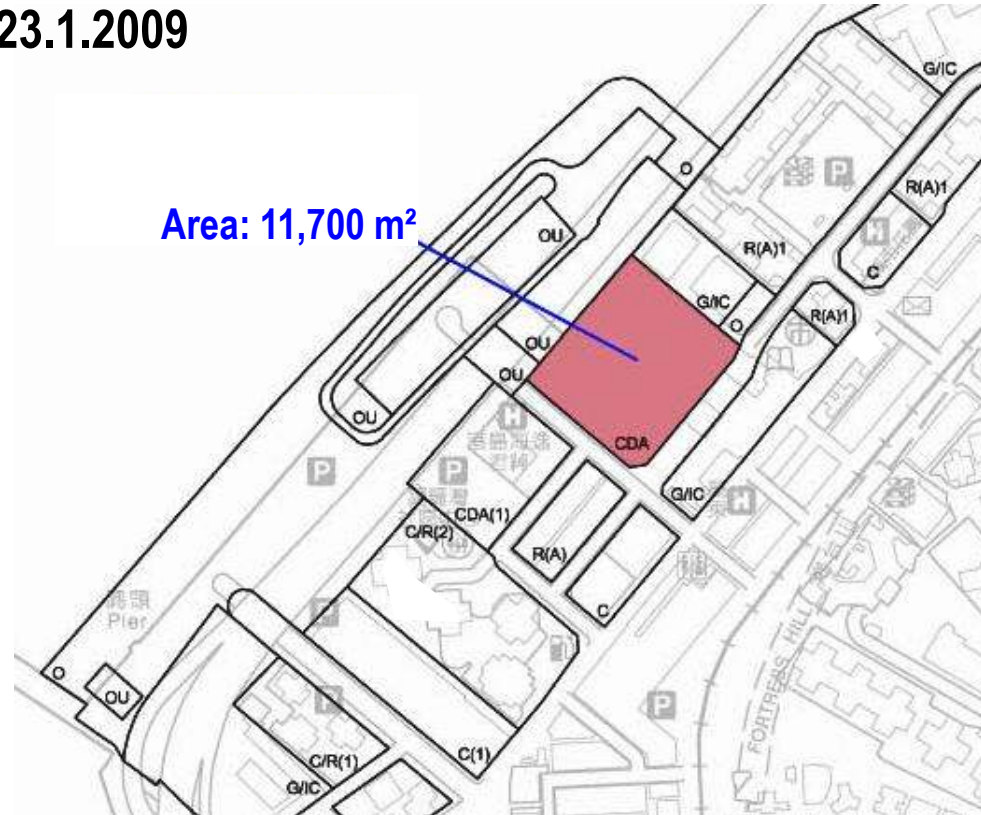
North Point Ferry Concourse Promenade



North Point Vehicular Ferry Pier Playground

# Planning Brief of Oil Street “Comprehensive Development Area”

Planning Brief endorsed by TPB on 23.1.2009



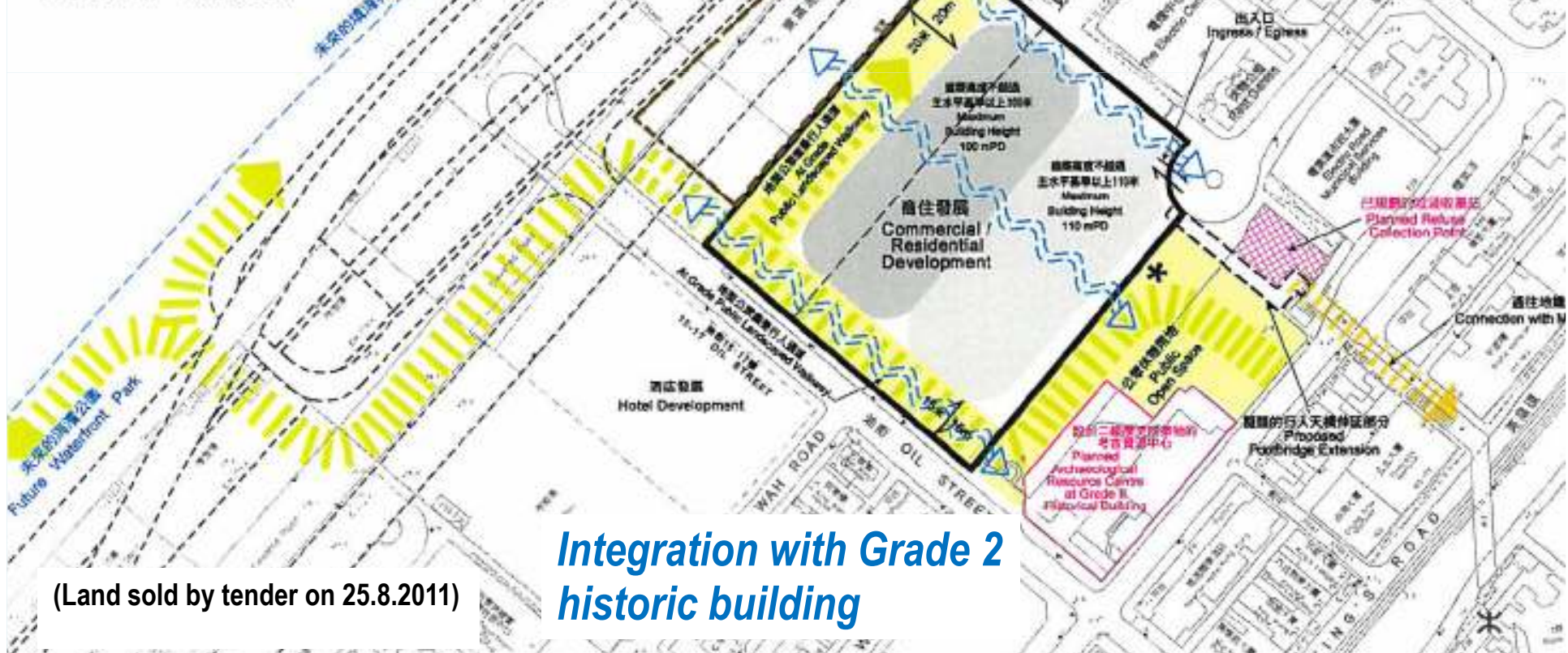
- Proposed Office/ Hotel/ Commercial, Residential and Public Open Space
- Lower density on harbourfront : PR 6  
(Total GFA 70,200m<sup>2</sup> , (domestic < 49,240m<sup>2</sup>))





- \* 包括緊急車輛通道及一個考古資源中心的上落客貨處  
Including Emergency Vehicular Access and a Loading / Unloading Space for the Archaeological Resource Centre
- 通往海濱  
Access to Waterfront
- 東區走廊/中環-灣仔繞道 (有待確實)  
Island Eastern Corridor / Central - Wan Chai Bypass  
(Subject to Confirmation)
- 在東區走廊下的中環-灣仔繞道行政大樓和附屬停車位及車輛通道的界線 (有待確實)  
Boundary of Central - Wan Chai Bypass Administration Building with Ancillary Parking Spaces and Vehicular Access under Island Eastern Corridor  
(Subject to Confirmation)
- 通風廊  
Wind Corridor

維多利亞港  
VICTORIA HARBOUR



Physical and visual access to harbourfront

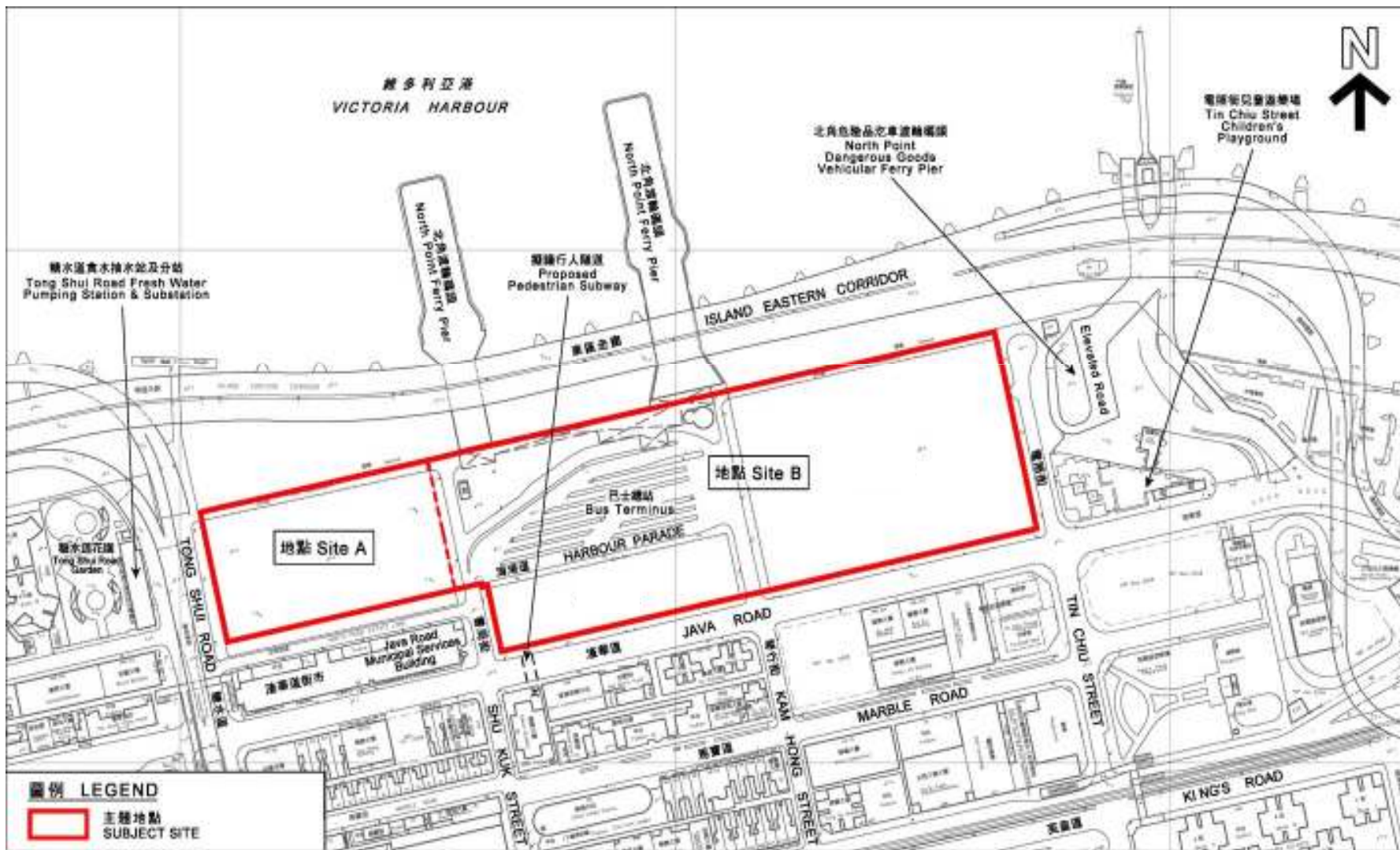
Maximise public open space 6,400m<sup>2</sup> (within site: 3,530m<sup>2</sup> South-east: 2,870m<sup>2</sup>)

Integration with Grade 2 historic building

(Land sold by tender on 25.8.2011)

# Planning Brief of Ex-North Point Estate Site

- Endorsed by TPB on 21.1.2011



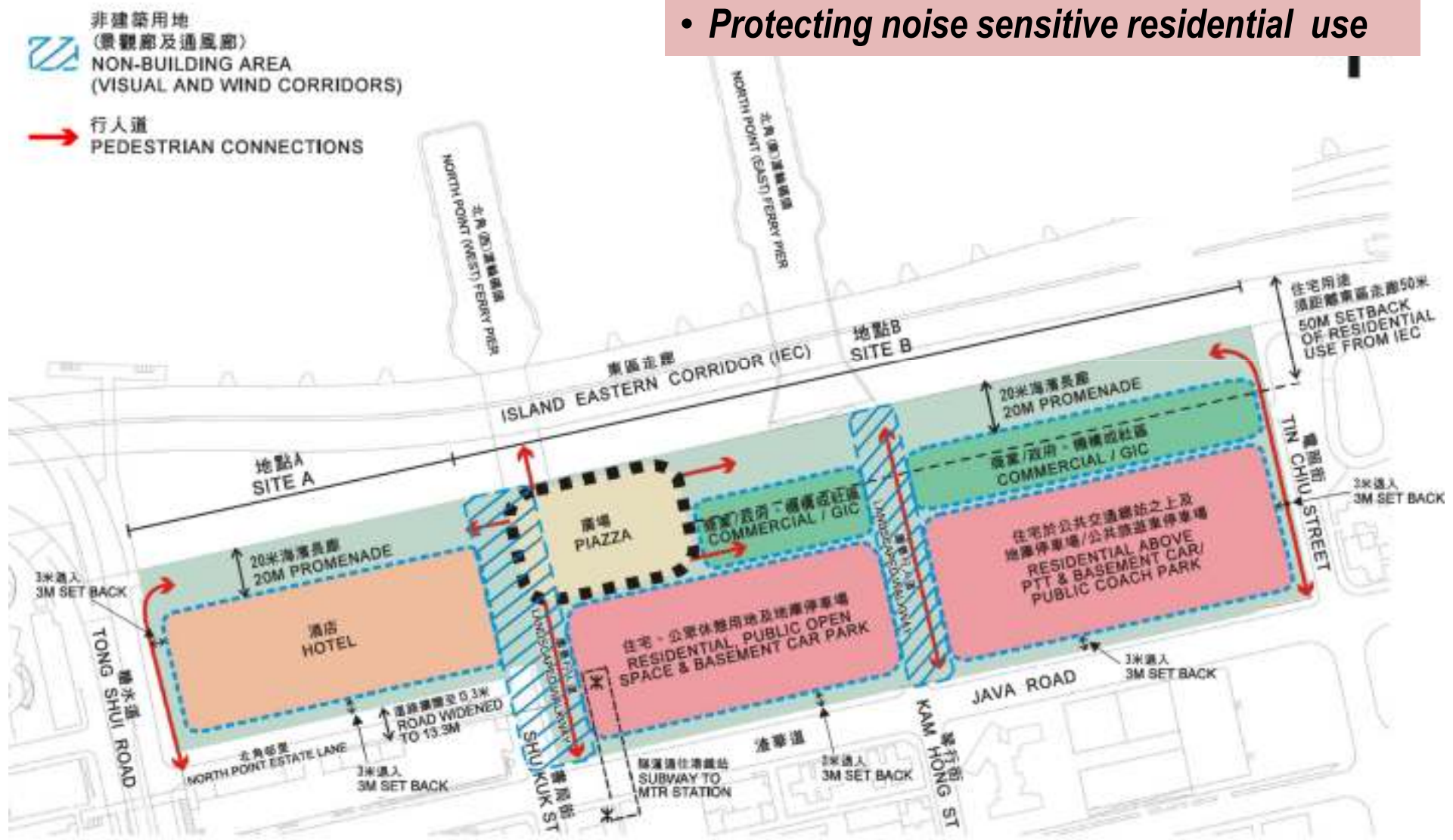
(Site A on 2012-13 Application List; Site B sold by tender on 11.7.2012)

	Total	Site A	Site B
<b>Area</b>	37,200 m <sup>2</sup>	7,935 m <sup>2</sup>	29,265 m <sup>2</sup>
<b>Proposed Uses</b>		<ul style="list-style-type: none"> <li>• Hotel</li> <li>• Waterfront promenade</li> </ul>	<ul style="list-style-type: none"> <li>• Residential and commercial uses</li> <li>• Public transport terminus</li> <li>• Public coach park</li> <li>• GIC facilities</li> <li>• Public open space and waterfront promenade</li> </ul>

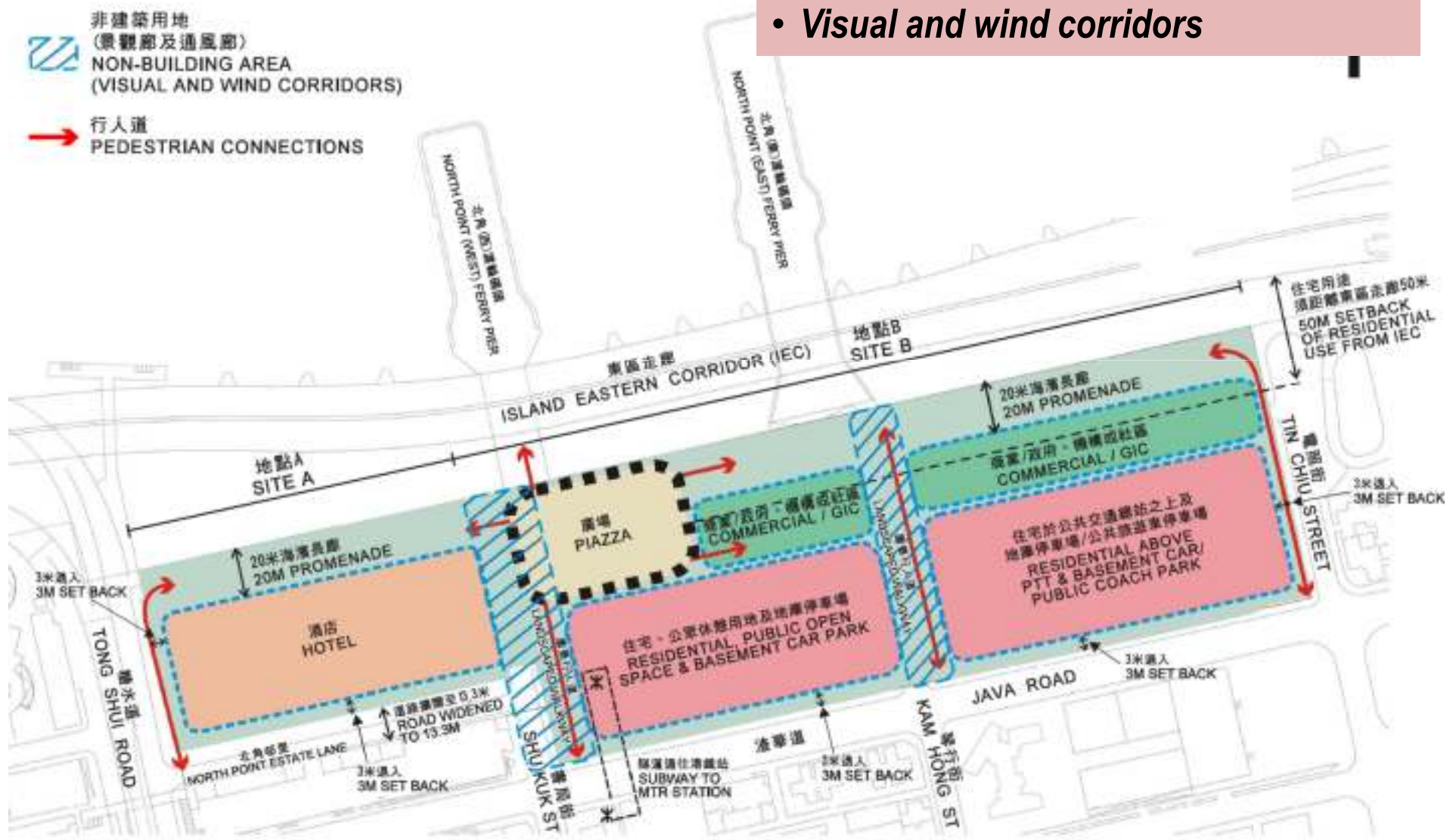




- **Stepped height**  
**Max. 80mPD; 30m difference between waterfront and inland**
- **Protecting noise sensitive residential use**

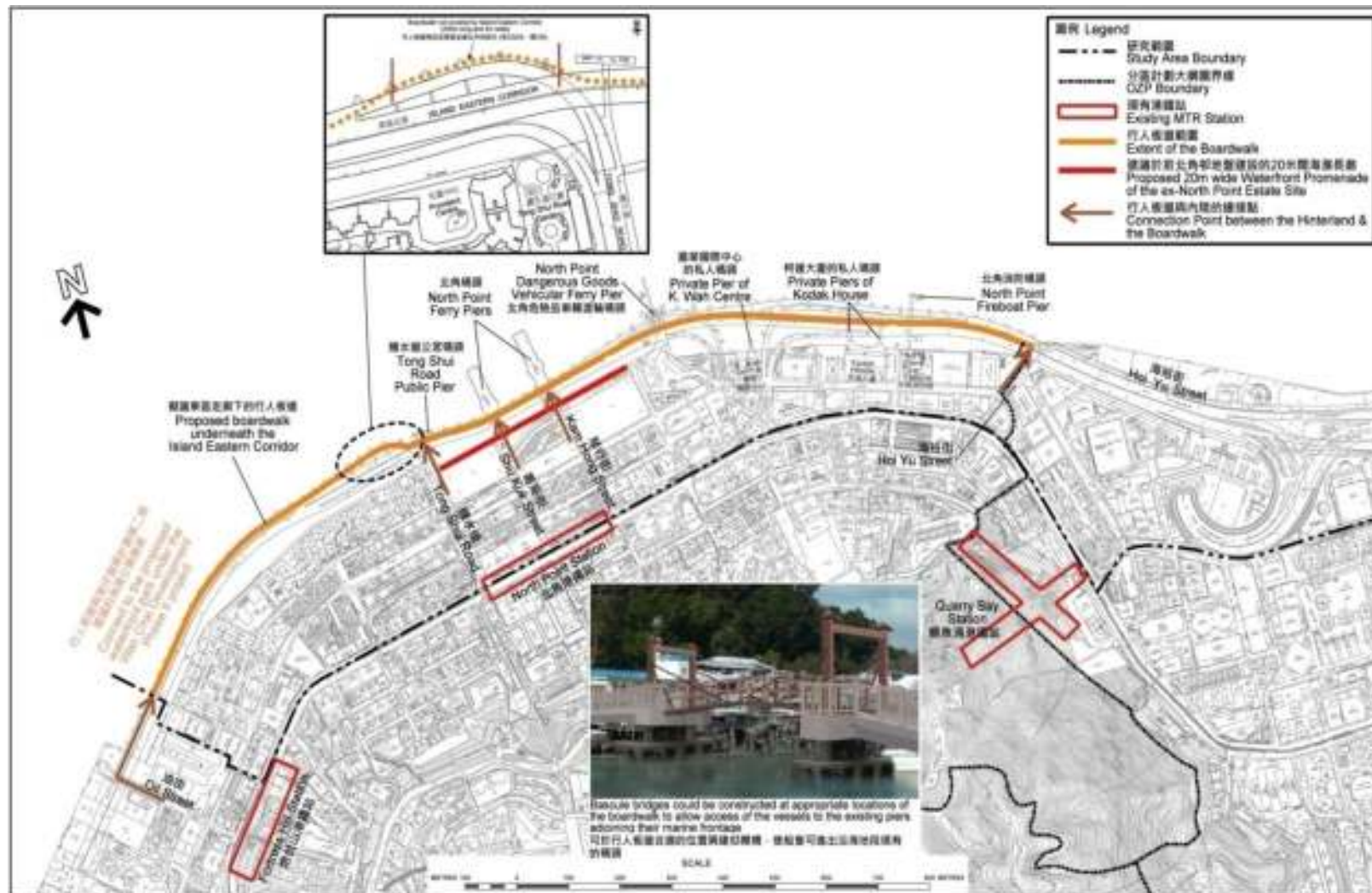


- Physical access to harbourfront
- Landscaped walkways
- Direct connection with MTR
- Visual and wind corridors

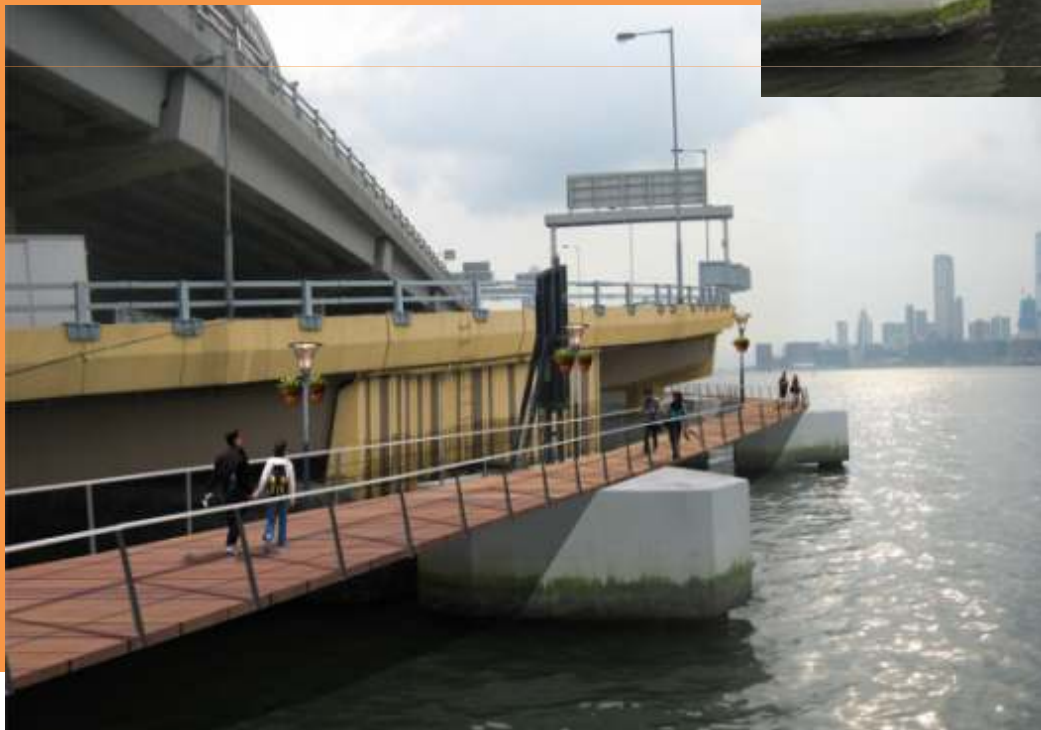


# Hong Kong Island East Harbourfront Study

- Study completed in March 2012
- Proposed 2km long boardwalk underneath Island Eastern Corridor



## Proposed boardwalk

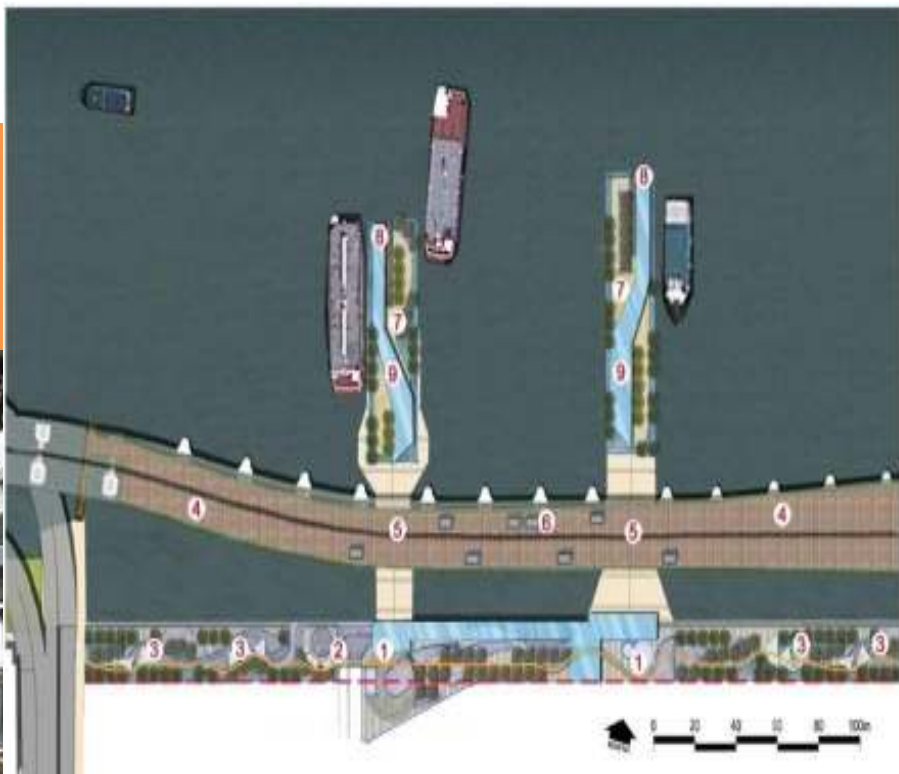


A small portion (about 200m) to be extended onto the sea surface (subject to compliance with the Protection of the Harbour Ordinance)



# North Point Ferry Piers

## Vibrant Entertainment-themed Waterfront



- Legend
- 1 Civic Plaza
  - 2 資訊亭  
Information Kiosk at the Promenade
  - 3 拉索帳篷  
Tensile Shelter
  - 4 擬議的行人板道，以改善海濱暢達性  
Proposed Boardwalk for Improved Waterfront Accessibility
  - 5 行人板道貫穿碼頭  
Extension of Boardwalk through the Pier Structures
  - 6 行人板道附設的零售亭舖  
Retail Kiosks on the Boardwalk
  - 7 圍繞美化地帶供市民享用  
Rooftop Cafes and Landscape Areas Accessible to the Public
  - 8 觀景台  
Viewing Deck
  - 9 有蓋行人道  
Covered Walkway
  - 休聞單車徑  
Proposed Informal Cycle Track
  - 20米闊的海濱長廊  
20m Waterfront Promenade

Ferry piers and IEC Boardwalk as main activity area  
 Maintain the existing ferry services with the western berth of the eastern pier for leisure boat use  
 Renovation and refurbishment of the ferry piers with restaurant, commercial and entertainment uses  
 Provision of cafés on the pier roof alongside with landscaped area for public access  
 Provision of soft landscaped open space, walkway, civic plazas and recreational uses in the 20m wide waterfront promenade



***Thank you***