



擴建中信大廈行人天橋至添馬的立法會綜合大樓
Extension of CITIC Tower Footbridge to LegCo Complex at Tamar

2012年7月

July 2012

背景

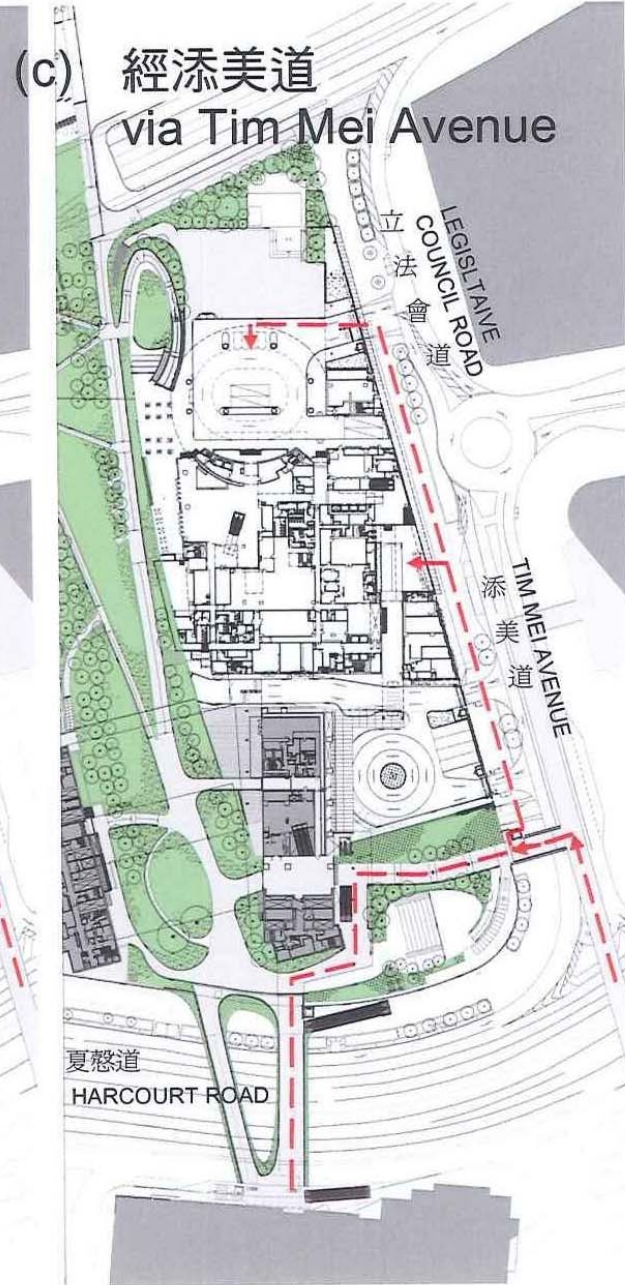
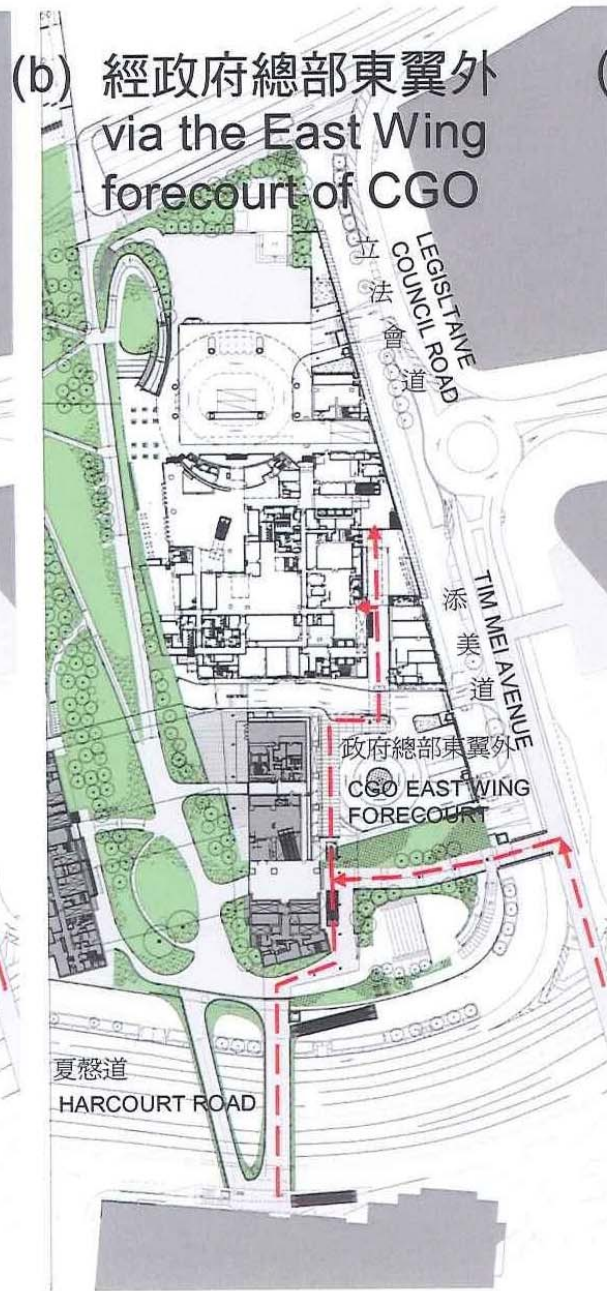
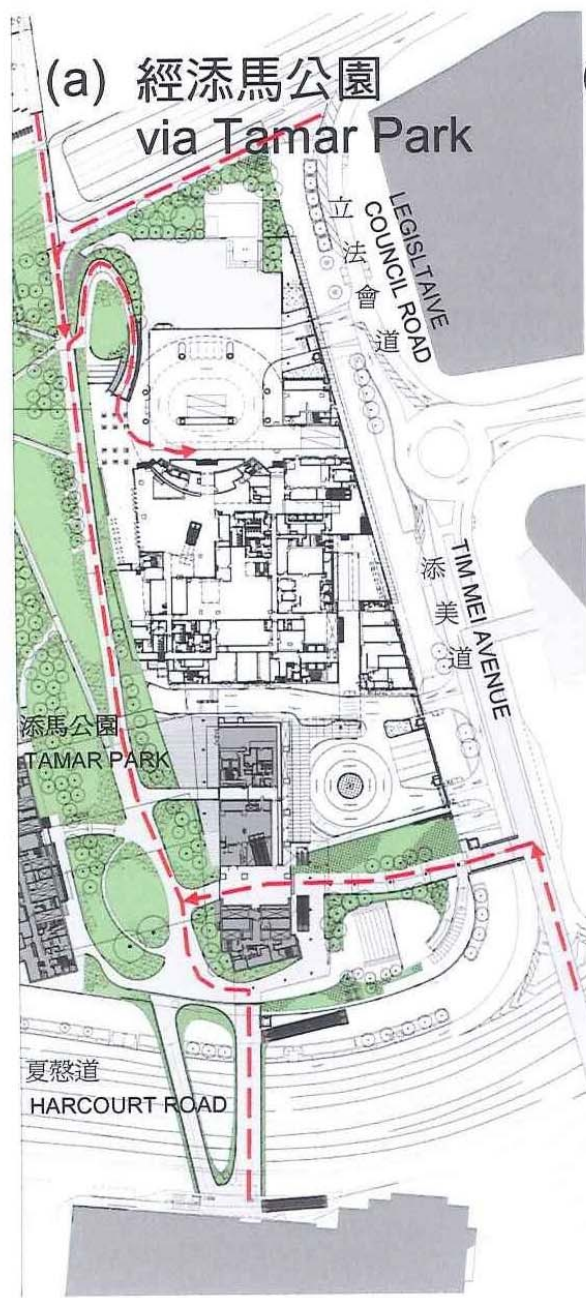
Background

- 目前有三條行人路徑連接金鐘腹地至添馬艦的立法會綜合大樓。
At present, there are three pedestrian routes from Admiralty hinterland to Legislative Council Complex (LCC).
 - 只有一條設有上蓋。
Only one route is covered.
 - 基於立法會的重要性及其獨立的角色，加上這條路徑可能會被示威者阻塞，立法會議員認為需要有一條獨立的有蓋通道。
Taking into account the importance and independent status of the Legislative Council (LegCo), and that this route might be blocked by demonstrators, LegCo considers it necessary to provide a separate covered walkway connecting LCC and Admiralty.
-

背景

Background

- 擴建中信大廈行人天橋至立法會綜合大樓可以提供一條直接及分隔的行人通道連接金鐘及立法會綜合大樓。
Extension of the existing CITIC Tower Footbridge will provide a direct and separate connection between Admiralty and LCC.
-



目前由金鐘前往立法會綜合大樓的三條行人路徑
Three existing pedestrian routes from Admiralty to LCC

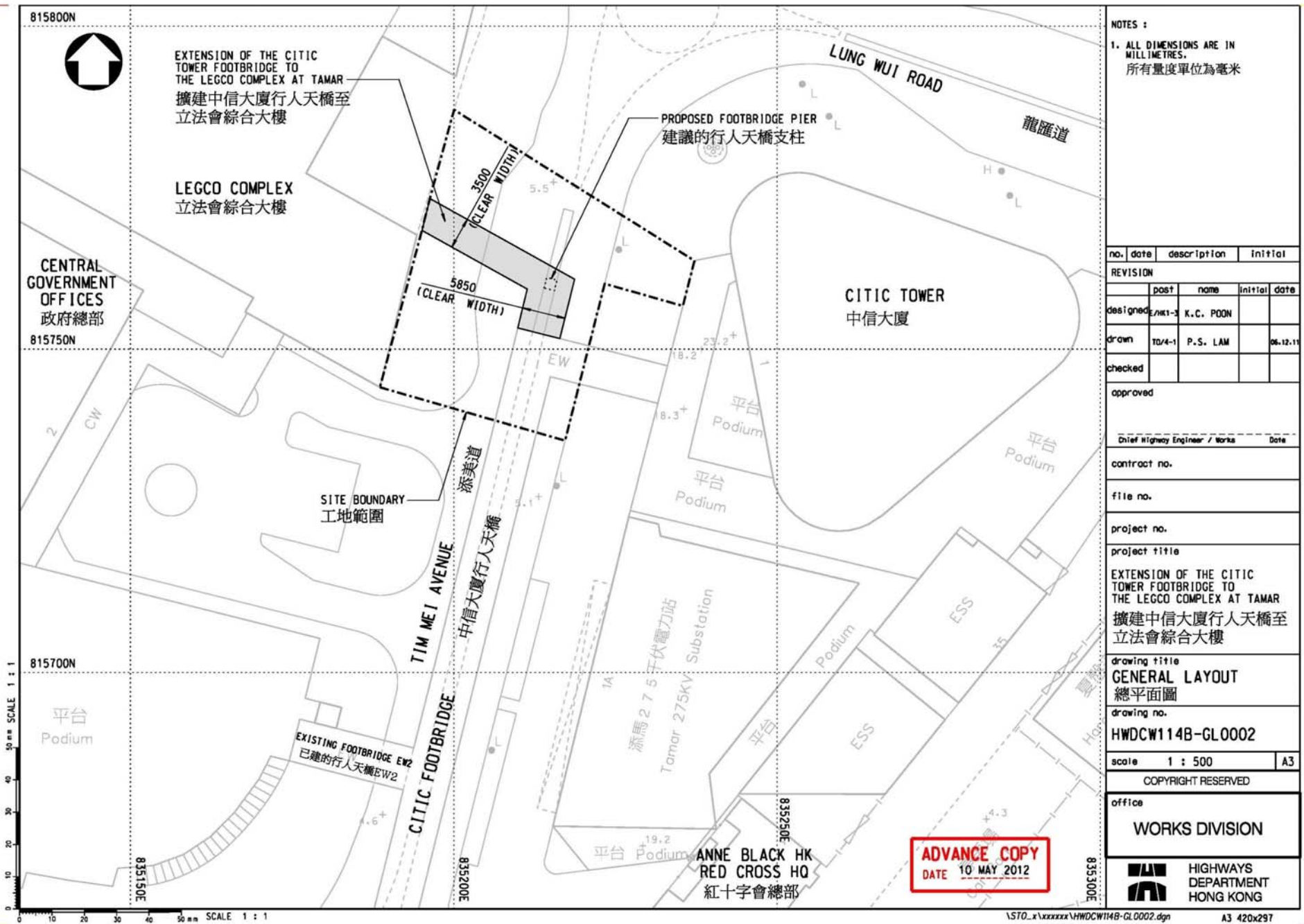
計劃概況

Scope of the Project

擴建中信大廈行人天橋

Extension of the CITIC Tower Footbridge

- 擴建一條長約30米的有蓋行人天橋，連接至立法會綜合大樓。
Construction of an extension of covered footbridge of about 30m in length to LCC.
- 於現時的中信大廈行人天橋進行適當改動，以連接至擴建的新行人天橋。
Associated modification of existing structures at the CITIC Tower Footbridge to facilitate the provision of the new footbridge.
- 於新建的行人天橋上進行園景美化工作。
Associated landscaping works on the new footbridge.



NOTES :

1. ALL DIMENSIONS ARE IN MILLIMETRES.
所有量度單位為毫米

no.	date	description	initial
REVISION			
	post	name	initial date
designed	2/11-3	K.C. POON	
drawn	T0/4-1	P.S. LAM	06.12.11
checked			

approved
Chief Highway Engineer / Works Date

contract no.

file no.

project no.

project title
EXTENSION OF THE CITIC TOWER FOOTBRIDGE TO THE LEGCO COMPLEX AT TAMAR
擴建中信大廈行人天橋至立法會綜合大樓

drawing title
GENERAL LAYOUT
總平面圖

drawing no.
HWDCW114B-GL0002

scale 1 : 500 A3

COPYRIGHT RESERVED

office
WORKS DIVISION



HIGHWAYS DEPARTMENT HONG KONG

工程項目平面圖 (一)
Project Layout Plan (I)

立法會綜合大樓範圍內的改裝工程

Modification Works to the LCC for New Footbridge Connection

- 興建新的有蓋通道，於橋面的水平連接新行人天橋至綜合大樓的辦公室樓，並附設樓梯連接至添美道的行人路。
Construction of a covered link connecting the new footbridge with the Office Block of the LCC at deck level with appropriate staircase connecting to the street level.
 - 其他改裝工程包括：
Other building alternation works including:
 - 加建支柱以承托新的有蓋通道和樓梯；
Structural supports for the covered link as well as for the new extension from the CITIC Tower Footbridge;
-

立法會綜合大樓範圍內的改裝工程

Modification Works to the LCC for New Footbridge Connection

- 於辦公室樓的外牆進行改裝工程，提供入口連接辦公室樓的一樓樓層；

Modification of the existing external façade of the Office Block of the LCC to provide an entrance to the 1/F of the LegCo Office Block;

- 移除和重建議員入口處旁的公眾示威區上的部份天篷，以方便興建上述的有蓋通道及樓梯；及

Removal and reconstruction of part of the existing canopy at the LegCo's demonstration area next to the Members' Entrance facilitating the construction of the aforementioned covered link and staircase; and

立法會綜合大樓範圍內的改裝工程

Modification Works to the LCC for New Footbridge Connection

- 於辦公室樓的一樓樓層進行內部裝修，為連接至新行人天橋的一樓新入口處提供一個接待的空間。

Modification of relevant internal space at 1/F of the Office Block of LCC to provide a reception space for the new entrance from the new footbridge.

工程模擬完成圖
Photomontages of
completed works

立法會綜合大樓
LegCo Complex

現時的中信大廈行人天橋
Existing CITIC Tower Footbridge

添美道
Tim Mei Avenue

工程前
Before Construction



立法會綜合大樓
LegCo Complex

擬擴建的行人天橋
Proposed Extension of Footbridge

現時的中信大廈行人天橋
Existing CITIC Tower Footbridge

添美道
Tim Mei Avenue

工程後
After Construction



工程前 Before Construction

中信大廈
CITIC Tower

添美道
Tim Mei Avenue

現時的中信大廈行人天橋
Existing CITIC Tower Footbridge



工程後 After Construction

中信大廈
CITIC Tower

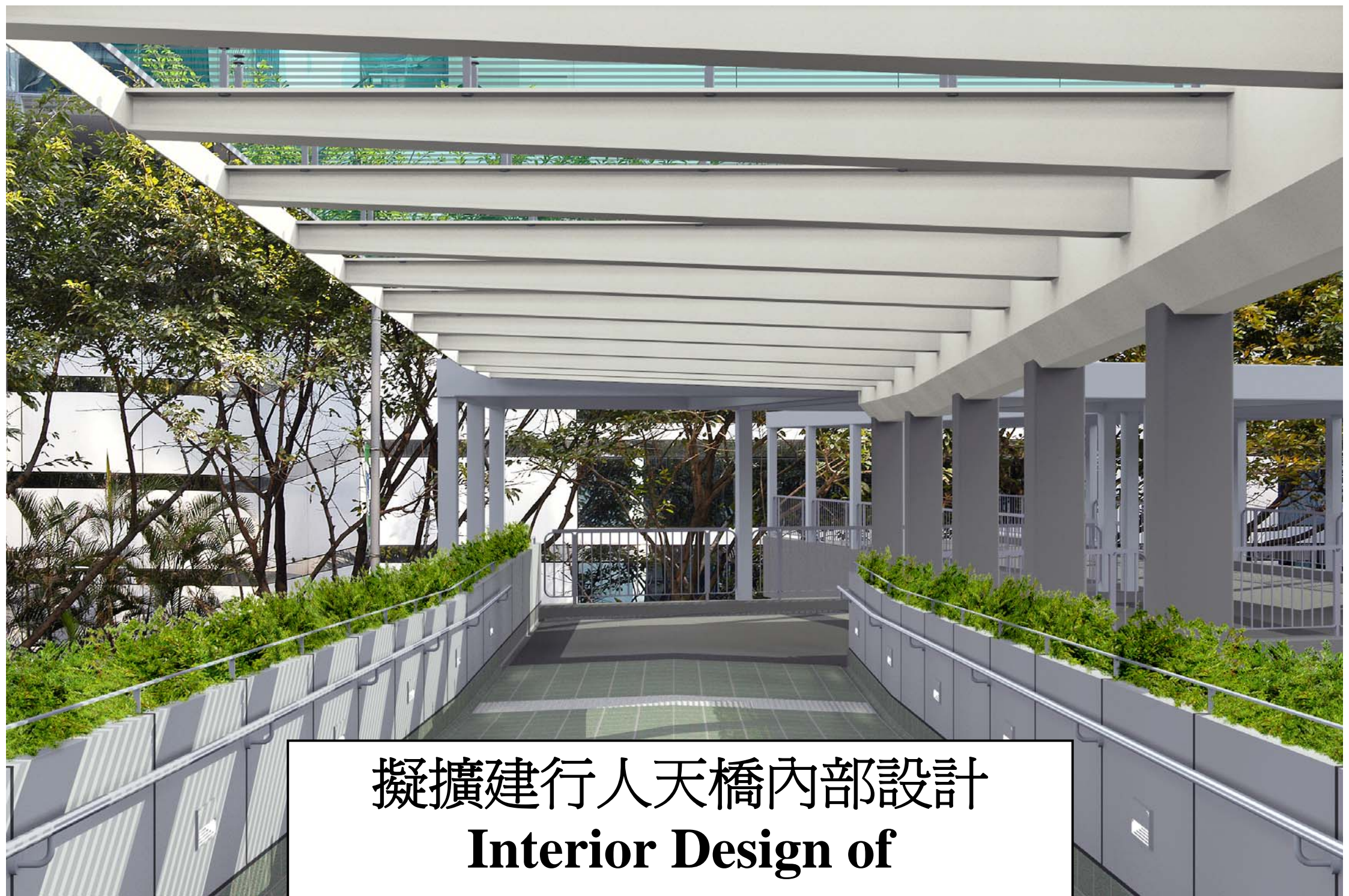
擬擴建的行人天橋
Proposed Extension of Footbridge

往立法會綜合大樓
To LegCo Complex

添美道
Tim Mei Avenue

現時的中信大廈行人天橋
Existing CITIC Tower Footbridge





擬擴建行人天橋內部設計
Interior Design of
Proposed Footbridge Extension

海港規劃指引及原則

Harbour Planning Guidelines and Principles

綜合規劃

Integrated Planning

- 使擴建的行人天橋與週圍的環境融成一體並保持和諧。
To blend the footbridge extension into the surrounding environment and maintain its harmony.
 - 新橋沿添美路的部份將與毗鄰的現有中信大廈行人天橋採用相約的設計。上蓋以波狀鋼片承托混凝土天花板；再以中空鋼管所組成的骨架加以支撐。
Section of new footbridge along Tim Mei Road would be in the form similar to adjacent existing CITIC Tower Footbridge – concrete slab roof on corrugated steel sheeting supported by frame of steel hollow sections.
-

海港規劃指引及原則

Harbour Planning Guidelines and Principles

綜合規劃

Integrated Planning

- 新橋橫跨添美路的主橋部分將會與現時的**EW2**行人天橋採用相同的設計（**EW2**即現時橫跨添美道連接中信大廈行人天橋至政府總部的行人天橋）-- 上蓋設有玻璃天花板並由懸臂式鋼架支撐。
Proposed main deck across Tim Mei Avenue would be in the form identical to existing Footbridge EW2 (existing footbridge across Tim Mei Avenue connecting CITIC Tower Footbridge with the Central Government Offices (CGO)) – Roof of glass panels supported by cantilevered steel frame.
-

海港規劃指引及原則

Harbour Planning Guidelines and Principles

綜合規劃

Integrated Planning

- 於主橋兩邊設有花架。花架外牆及主橋底部均以鋁板幕牆覆蓋。
Planters would be provided on both sides of the main deck.
Plants walls and soffit of main deck would be enclosed by aluminum claddings.
-

海港規劃指引及原則

Harbour Planning Guidelines and Principles

公眾參與

Public Engagement

- 擬擴建行人天橋的初部設計已於2012年2月送呈「橋樑及有關建築物外觀諮詢委員會」審閱並獲得接納。
The schematic design of the proposed footbridge extension was presented to ACABAS in February 2012 and was accepted.
 - 路政署及建築署已於2012年6月向中西區區議會及中信大廈管業處諮詢有關工程的意見，他們均支持工程的進行。
HyD and ArchSD have consulted the Central and Western DC and the building management of the CITIC Tower in June 2012 and they indicated support on the project.
-

海港規劃指引及原則

Harbour Planning Guidelines and Principles

公眾參與

Public Engagement

- 路政署計劃於2012年9月根據道路（工程、使用及補償）條例（第370章）為工程計劃進行刊憲。

HyD plans to gazette the project under the Roads (Works, Use and Compensation) Ordinance (Chapter 370) in September 2012.

海港規劃指引及原則

Harbour Planning Guidelines and Principles

滲透度

Permeability

- 擬建的行人天橋並不緊接海港，而是連接至現有的中信大廈行人天橋。
The proposed footbridge is not immediately fronting the Harbour and is connected to the existing CITIC Tower Footbridge.
 - 海港景觀並不會因擬建行人天橋的建設而受重大的影響。
The harbour view will not be much affected by the existence of the proposed footbridge.
-

海港規劃指引及原則

Harbour Planning Guidelines and Principles

連接性及可達性

Connectivity and Accessibility

- 擬建的行人天橋及園景美化工程將提供一條直接、宜人及分隔的有蓋行人通道連接金鐘至立法會綜合大樓。
The proposed footbridge together with the landscape works will provide a direct, pleasant and separate covered connection to LCC from Admiralty.
 - 提供一個安全及舒適的步行環境；並使在高架行人路上步行成為舒適的事情。
Providing a safe and comfortable walking environment and comfort for travelling on foot at an elevated level.
-

完

END

