



Agreement No. CE 61/2008 (TP)



港島東海旁研究

Hong Kong Island East Harbour-front Study

港島區海濱發展專責小組

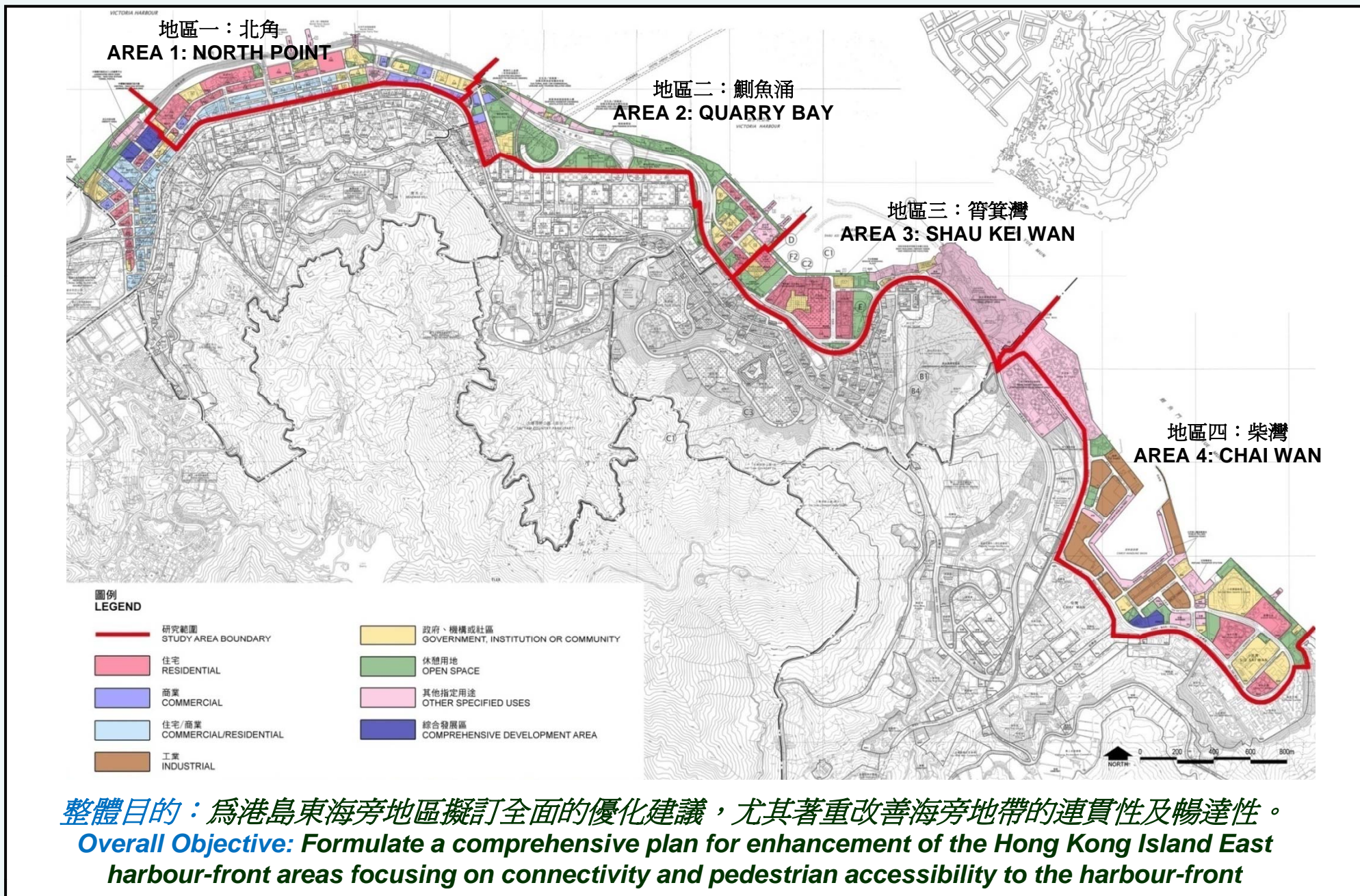
Task Force on Harbour-front Developments on
Hong Kong Island



Supported by **AECOM**

30 August 2011

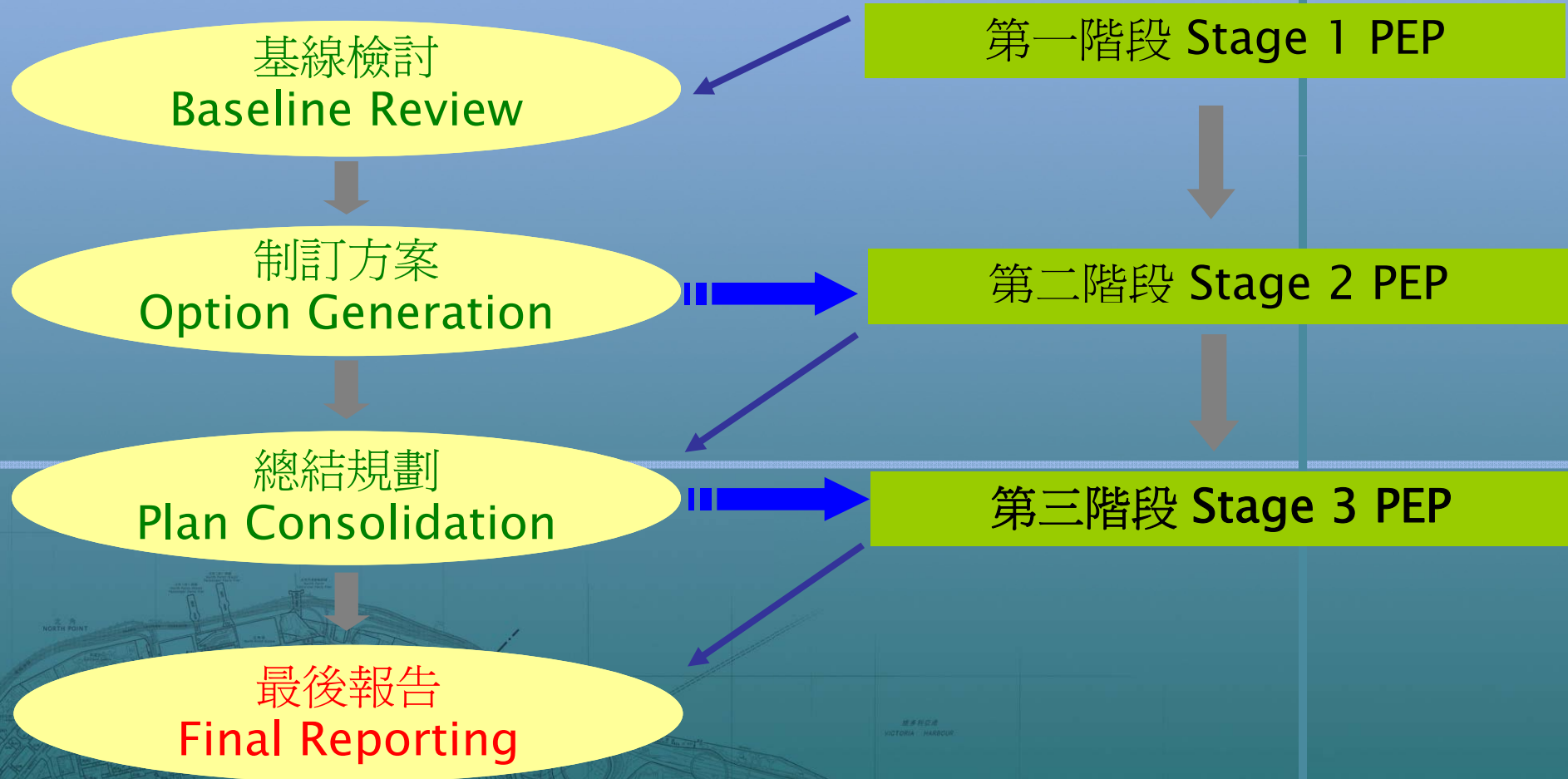
研究整體目的 Overall Study Objective



Study Programme and Progress 研究時間表及進度

規劃研究 Planning Study

公眾參與活動 Public Engagement Programme (PEP)



預計於2011年底完成
Anticipated for completion in end of 2011

第三階段公眾參與活動

Stage 3 Public Engagement Programme

舉辦之活動 Activities organized :

- 法定及諮詢團體簡介會

Briefings to Local Residents

- 城市規劃委員會
- 土地及建設諮詢委員會
- 東區區議會
- 香港規劃師學會
- 區內居民

Town Planning Board
Land and Development Advisory Committee
Eastern District Council
Hong Kong Institute of Planners
Local residents



第三階段公眾參與活動－主要意見

Stage 3 Public Engagement: Public Views

Boardwalk under the IEC

- ✓ General support for boardwalk proposal
- ✓ Concern safety and potential air pollution caused by vehicular traffic of the IEC

SkyTrail

- ✓ Well received by the general public
- ✓ Strong objection from Heng Fa Chuen residents to the proposed connection with the Shing Tai Road (a public road)

Enhancement Proposal for Shau Kei Wan Shipyards and the Adjacent Waterfront

- ✓ Generally welcomed by the public
- ✓ Suggests the provision of an open space/a plaza within the proposed temporary heritage park for religious/festive events

Key Sites

- ✓ Proposals generally welcomed by the public
- ✓ Development to be low-rise and low density
- ✓ Concern the proposed tourism, cultural and entertainment uses at Hoi Yu Street would affect the tranquility of the area, generate nuisance to the local residents and reduce the open space provision

東區走廊下的行人板道

- ✓ 普遍支持行人板道建議
- ✓ 關注安全及東區走廊交通引起的潛在空氣污染問題

高架天梯

- ✓ 普遍受公眾歡迎
- ✓ 杏花邨居民強烈反對高架天梯連接至盛泰道（公共道路）

筲箕灣船廠及海濱優化建議

- ✓ 公眾普遍歡迎筲箕灣船廠及海濱優化建議
- ✓ 建議於臨時歷史文化公園中提供空間或廣場供節慶活動使用

重點改善地點

- ✓ 公眾普遍歡迎兩處重點改善地點的優化建議
- ✓ 兩處重點改善地點的發展須為低層及低密度建築
- ✓ 關注於海裕街擬議的旅游、文化及娛樂用途可能會影響區內寧靜的環境，為附近居民帶來滋擾，並減少區內的休憩用地

第三階段公眾參與活動－主要意見

Stage 3 Public Engagement: Public Views

Streetscape Enhancement Proposals

- ✓ Generally welcomed the streetscape enhancement for the nine identified roads/streets

Provision of Cycling Facilities

- ✓ Diverse views at the Stage 2 PEP: some are keen to have a continuous cycle track, others concerned about pedestrian safety
- ✓ Stage 3 PEP: requests for such provision not only as a leisure/recreational activity but also as an alternative means of transport also received.

Provision of Water Taxi Service

- ✓ Generally welcomed by the public
- ✓ More pick-up and drop off points be provided along the waterfront

Implementation

- ✓ Request for implementation of the proposals as soon as possible
- ✓ The proposed IEC Boardwalk was accorded a high priority for implementation amongst major enhancement proposals

街景優化建議

- ✓ 普遍歡迎優化九條街道街景的建議

單車設施

- ✓ 公眾於第二階段公眾參與活動就提供單車設施持不同意見: 部份人士渴望可提供連貫的單車徑, 其他人士關注有關設施帶來的行人安全問題
- ✓ 第三階段公眾參與活動: 部份人士要求提供單車徑, 不僅用作康樂用途, 而且可作為另一交通選擇

水上的士服務

- ✓ 公眾普遍歡迎水上的士服務
- ✓ 建議沿海旁提供更多水上的士上落客點

實施計劃

- ✓ 要求盡早實行優化建議
- ✓ 在主要的優化建議中, 東區走廊的行人板道建議為優先實施的項目

推薦方案 Recommended Option of Enhancement Proposals

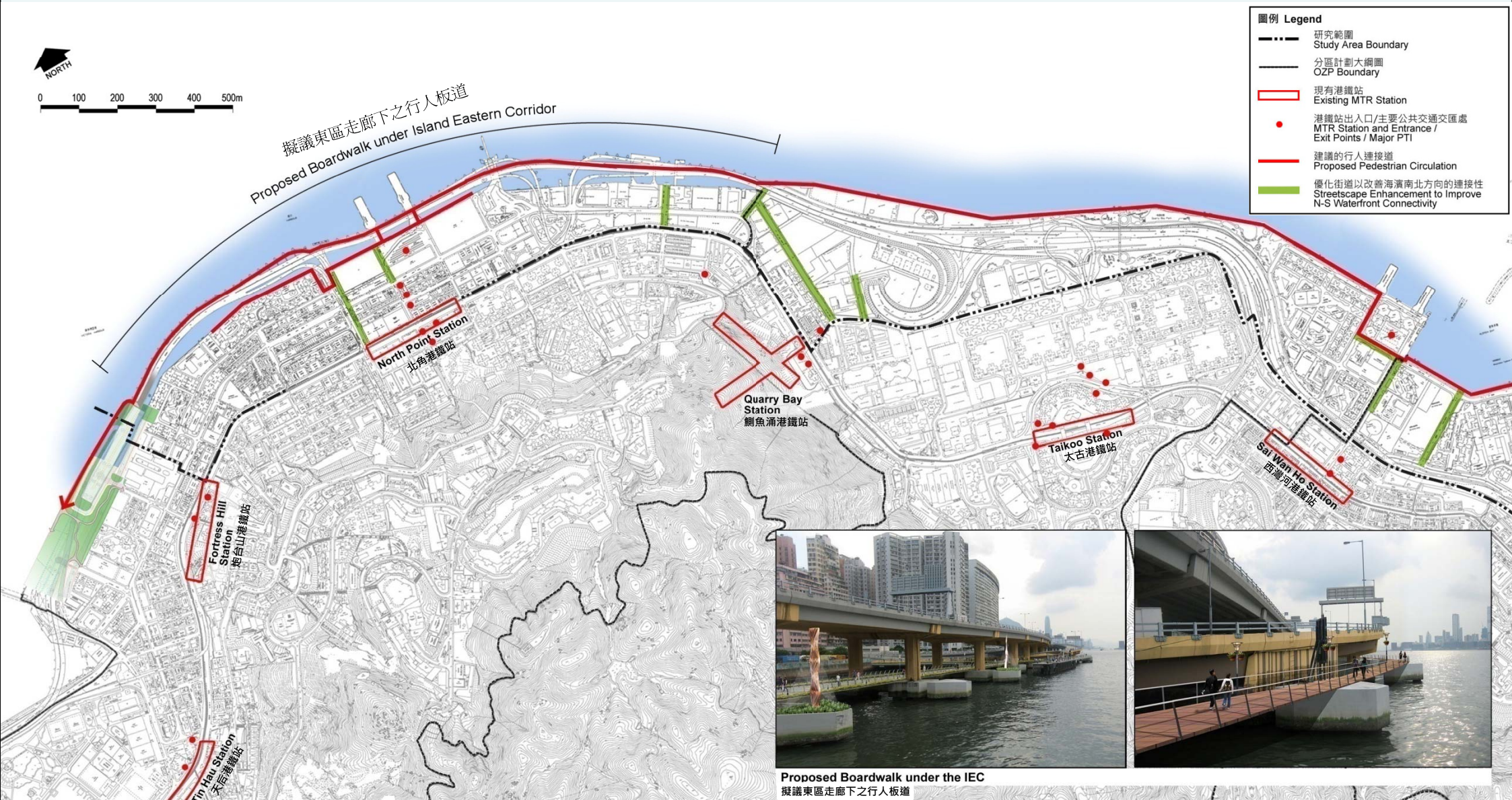


海濱連貫性及優化建議 Waterfront Connectivity and Enhancement Proposals



海濱長廊計劃／行人通道網絡－北角及鰂魚涌

Waterfront Promenade Proposal / Pedestrian Circulation Network - North Point and Quarry Bay



海濱長廊計劃／行人通道網絡－筲箕灣及柴灣

Waterfront Promenade Proposal / Pedestrian Circulation Network - Shau Kei Wan and Chai Wan



海濱連貫性及優化建議方案 Waterfront Connectivity and Enhancement Proposals

北角

NORTH POINT

QUARRY BAY

SHAU KEI WAN

CHAI WAN



海濱長廊優化建議方案－北角

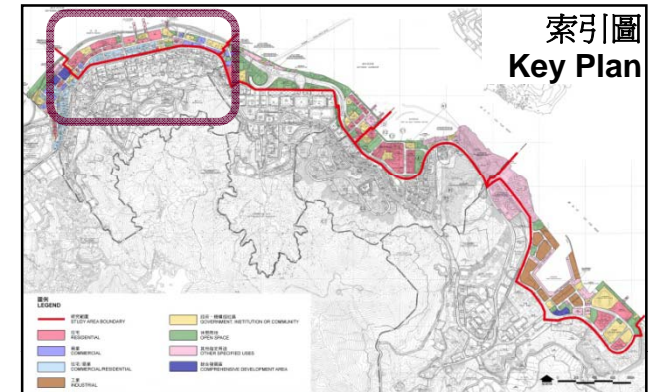
Waterfront Promenade Enhancement Proposal – North Point



效果圖
Perspective View



效果圖
Perspective View



索引圖
Key Plan

建議在東區走廊下興建2公里長的行人板道
Proposed 2km-long boardwalk underneath the IEC

一小段的行人板道（長約200米）會伸延至海面上
（要視乎是否符合《保護海港條例》）
A small portion (about 200m) to be extended onto the sea surface (subject to compliance with the Protection of the Harbour Ordinance)

- 圖例 Legend
- 研究範圍 Study Area Boundary
 - 分區計劃大綱圖 OZP Boundary
 - ◻ 現有港鐵站 Existing MTR Station
 - 港鐵站出入口/主要公共交通交匯處 MTR Station and Entrance / Exit Points / Major PTI
 - 建議的行人連接道 Proposed Pedestrian Circulation
 - 優化街道以改善海濱南北方向的連接性 Streetscape Enhancement to Improve N-S Waterfront Connectivity

Proposed Boardwalk under Island Eastern Corridor 擬議東區走廊下之行人板道

打通和富中心海濱長廊及糖水道花園之間的圍牆
Opening up the boundary wall of Provident Centre to link up with Tong Shui Road Garden



在前北角邨地盤預留20米闊的海濱長廊
Provision of 20-m wide waterfront promenade at the ex-North Point Estate site



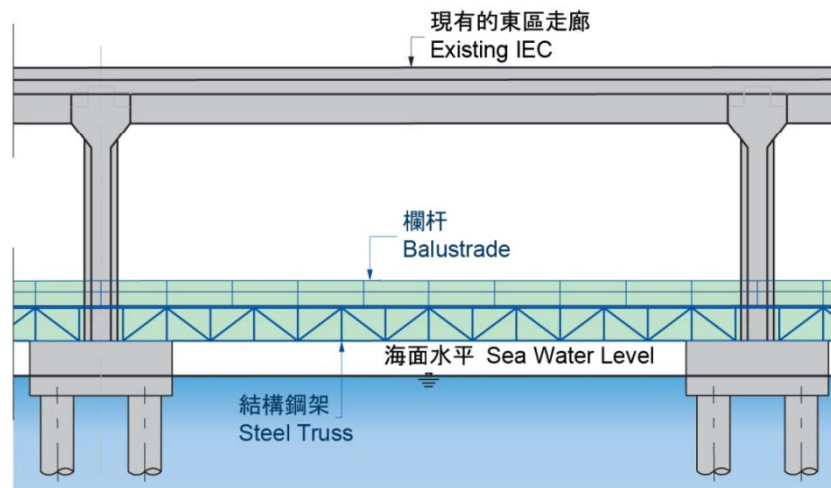
東區走廊下建議的行人板道：一般設計特色

Proposed Boardwalk under IEC: General Design Characteristics



糖水道碼頭
Tong Shui Road Pier

東區走廊現有狀況
IEC: Existing Conditions



典型立面圖
Typical Elevation

方案一 方案二
Option 1 Option 2

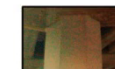
地面
Flooring



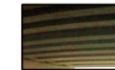
雕塑
Sculptures



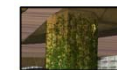
著色處理
Chromatic Treatment



頂部
Roofscape



綠化
Greening

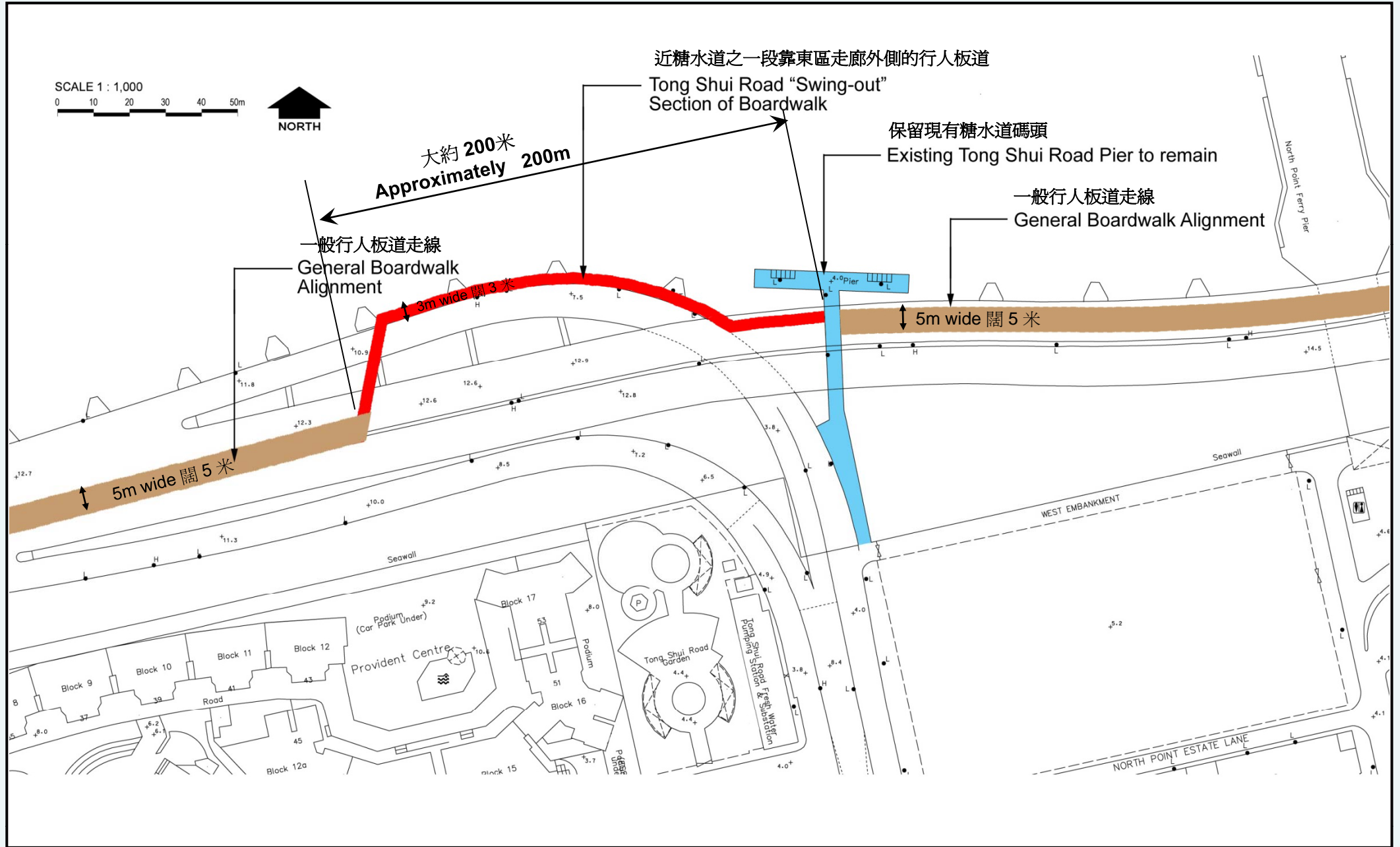


方案一（混凝土鋪面）
Option 1 (Hard Surface)



方案二（循環再用物料）
Option 2 (Recycled Material)

位於糖水道支路的東區走廊行人板道之詳細走線 Detailed IEC Boardwalk Alignment at Tong Shui Road Slip Road

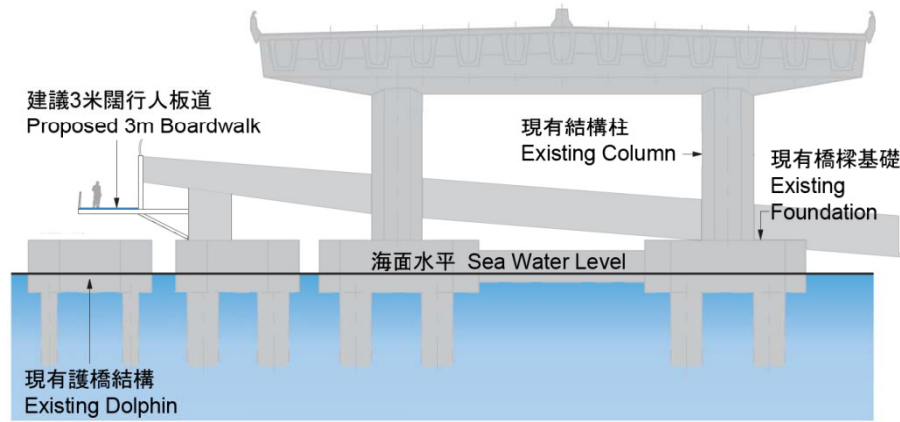


東區走廊下建議的行人板道：不同設計

Proposed Boardwalk under IEC: Design Variation



東區走廊現有狀況
IEC: Existing Conditions



特殊情况一：剖面圖
Special Condition 1: Section

	方案一 Option 1	方案二 Option 2
地面 Flooring		
雕塑 Sculptures		
著色處理 Chromatic Treatment		
頂部 Roofscape		
綠化 Greening		



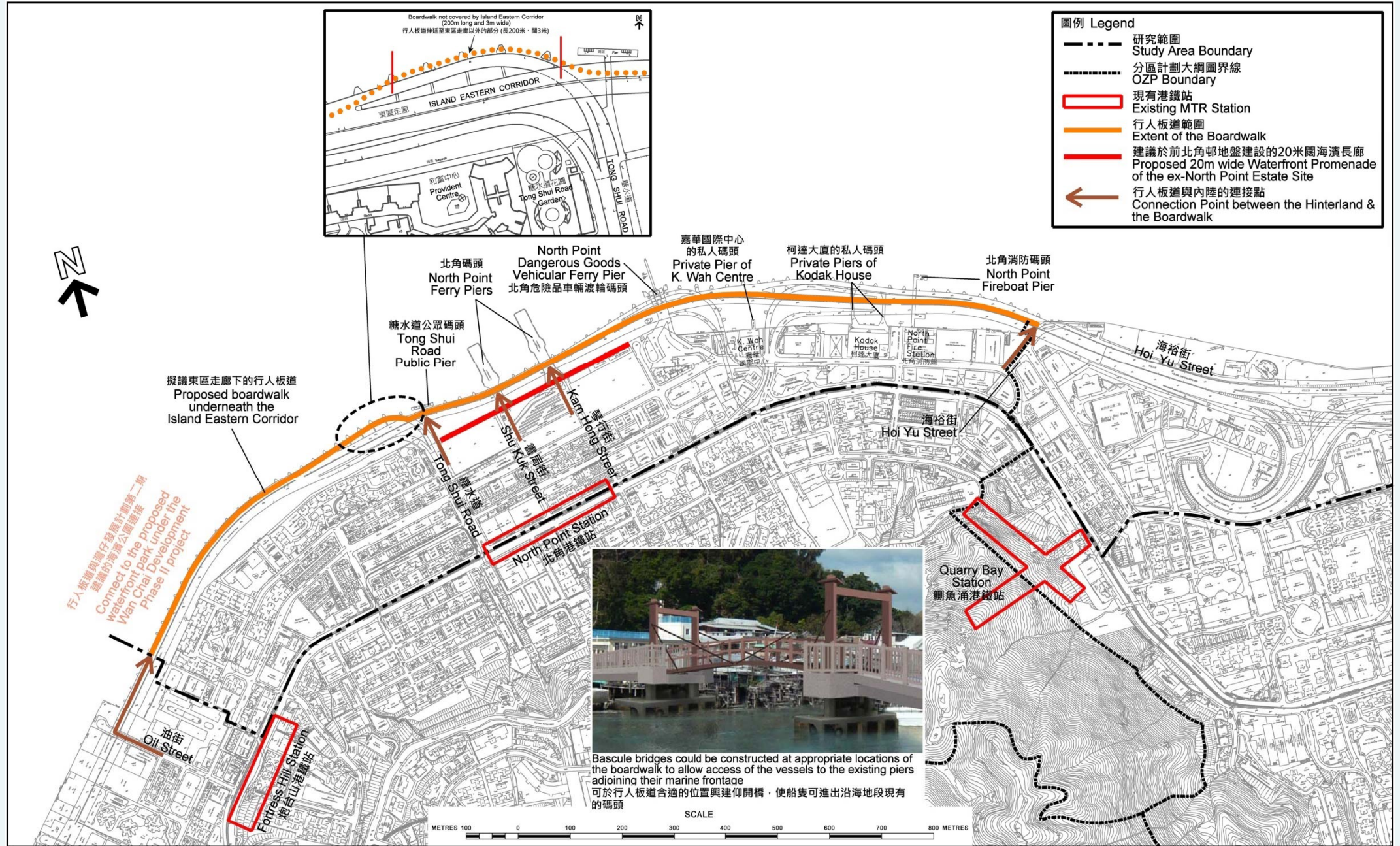
方案一（混凝土鋪面）
Option 1 (Hard Surface)



方案二（環保綜合木料）
Option 2 (Composite Timber)

擬議東區走廊下的行人板道

Proposed Boardwalk underneath the Island Eastern Corridor



海濱連貫性及優化建議方案 Waterfront Connectivity and Enhancement Proposals

NORTH POINT

鯽魚涌

QUARRY BAY

SHAU KEI WAN

CHAI WAN



海濱長廊優化建議方案－鯽魚涌

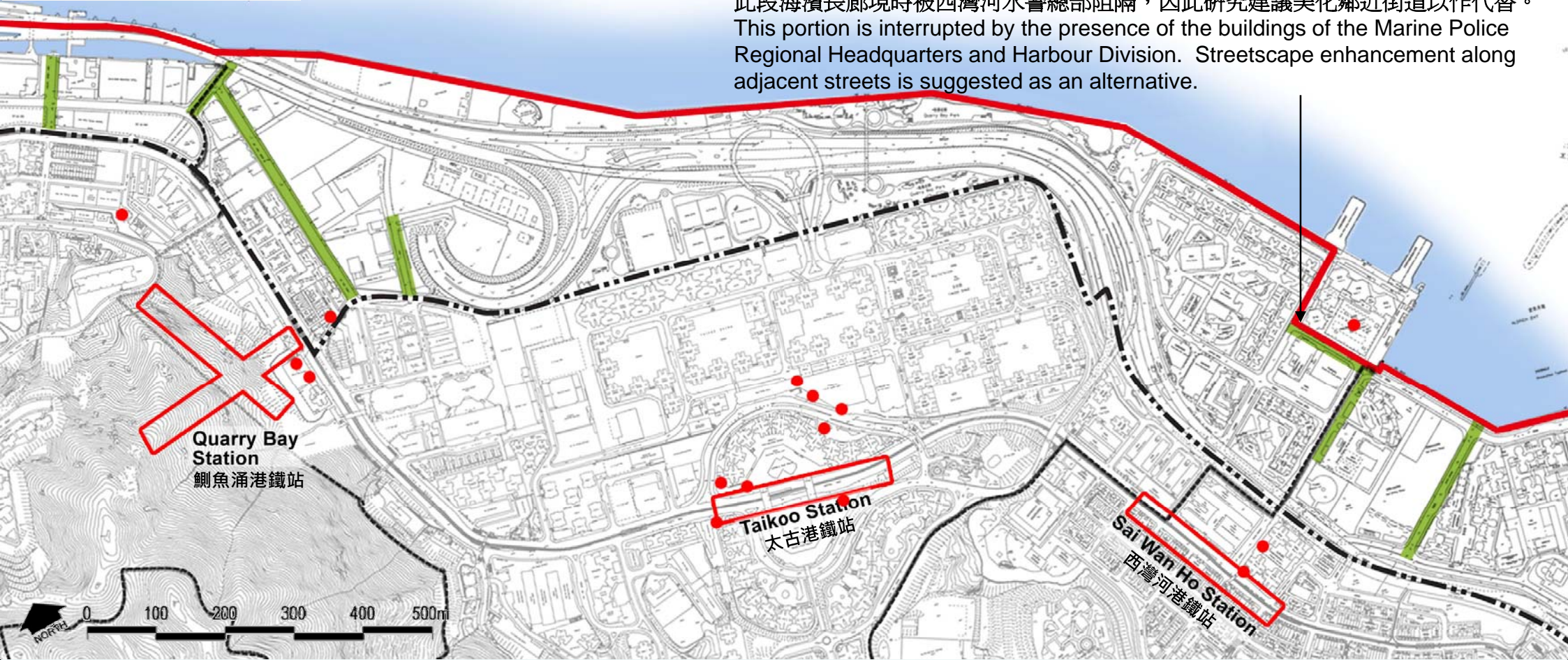
Waterfront Promenade Enhancement Proposal – Quarry Bay

圖例 Legend

- 研究範圍
Study Area Boundary
- 分區計劃大綱圖
OZP Boundary
- 現有港鐵站
Existing MTR Station
- 港鐵站出入口/主要公共交通交匯處
MTR Station and Entrance /
Exit Points / Major PTI
- 建議的行人連接道
Proposed Pedestrian Circulation
- 優化街道以改善海濱南北方向的連接性
Streetscape Enhancement to Improve
N-S Waterfront Connectivity



此段海濱長廊現時被西灣河水警總部阻隔，因此研究建議美化鄰近街道以作代替。
This portion is interrupted by the presence of the buildings of the Marine Police Regional Headquarters and Harbour Division. Streetscape enhancement along adjacent streets is suggested as an alternative.



海濱連貫性及優化建議方案 Waterfront Connectivity and Enhancement Proposals

NORTH POINT

QUARRY BAY

筲箕灣

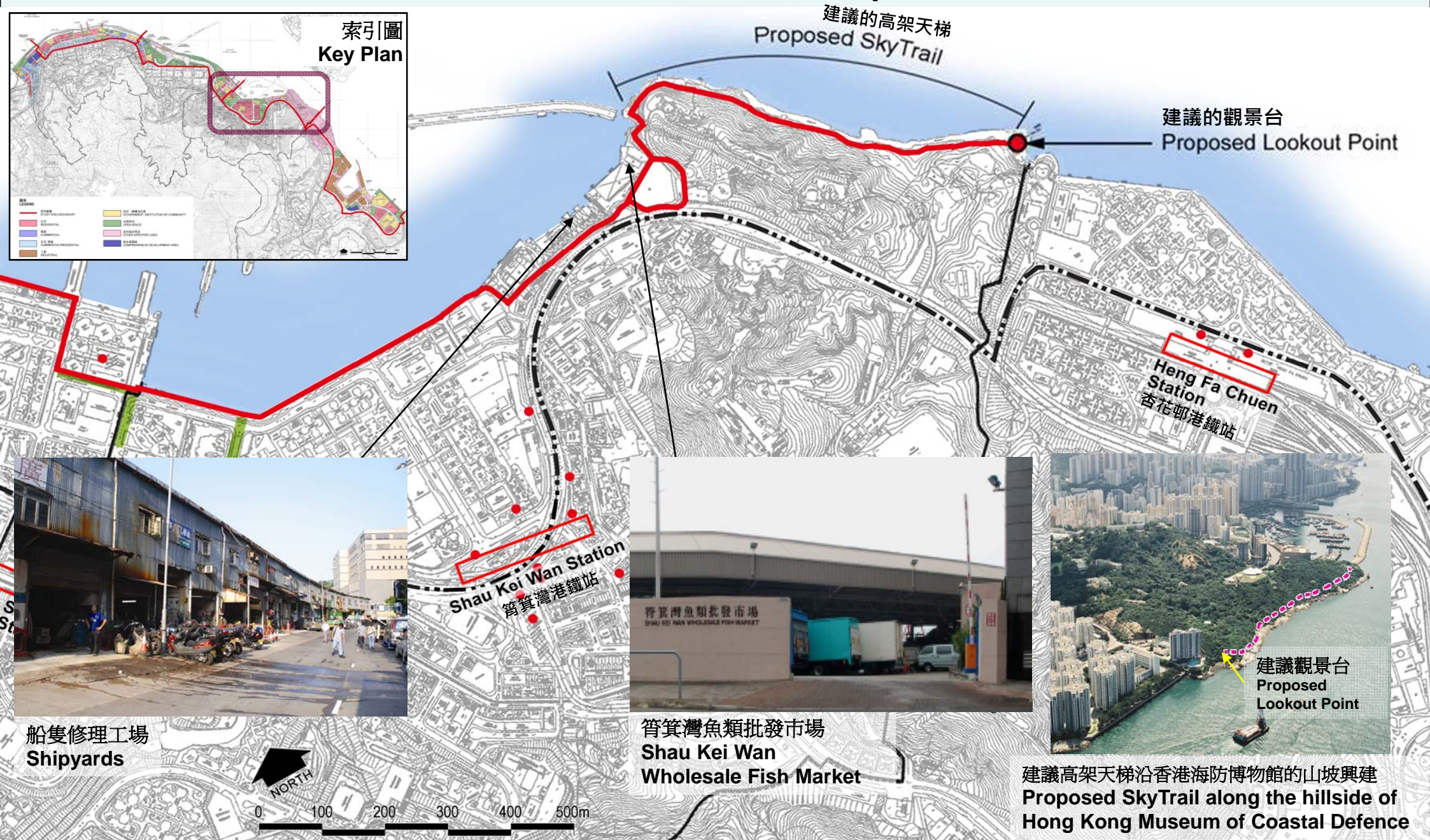
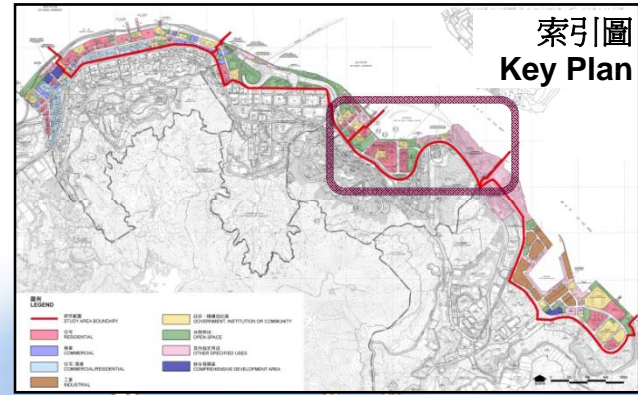
SHAU KEI WAN

CHAI WAN



海濱長廊優化建議方案－筲箕灣

Waterfront Promenade Enhancement Proposal – Shau Kei Wan



筲箕灣船廠及鄰近海濱的優化建議

Enhancement of Shau Kei Wan Shipyards and Adjacent Waterfront



文物徑地面鋪裝圖案

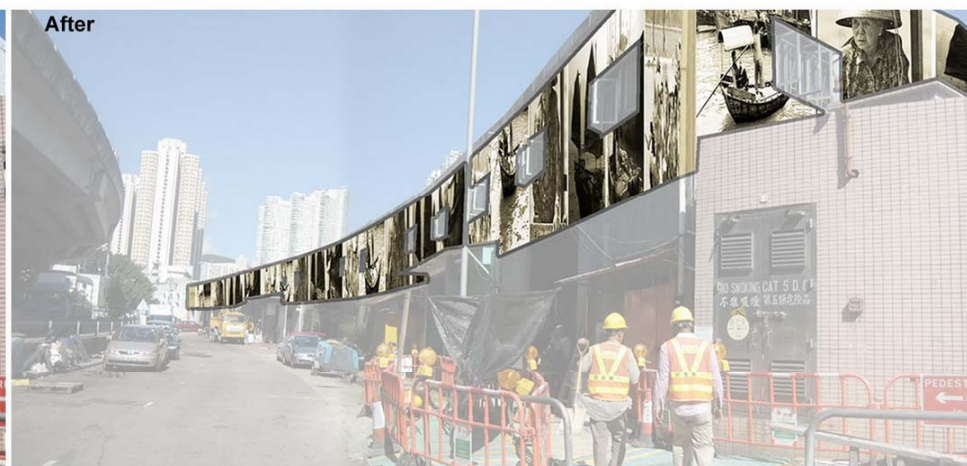
歷史漁村主題
Fishing Heritage Theme



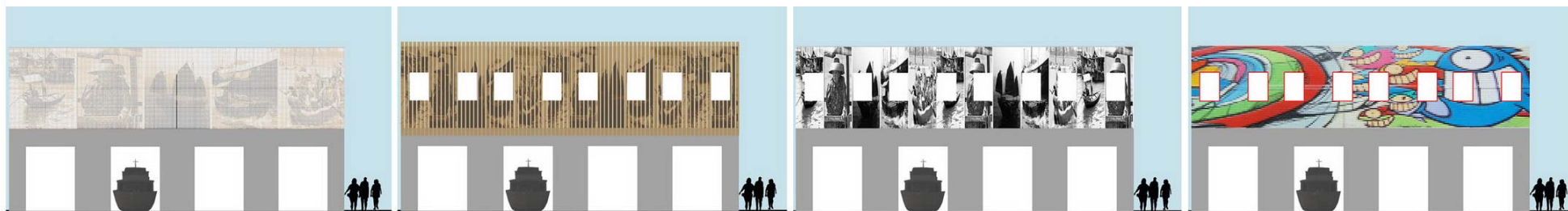
建議改善筲箕灣船隻修理工場的外觀 Proposed Façade Treatment of Shau Kei Wan Shipyards



索引圖
Key Plan



為反映筲箕灣區的漁業發展，船隻修理工場的外牆可用噴漆圖片以突出這區的文化歷史。
To promote the fishing heritage of Shau Kei Wan area, the exterior facades of the shipyard can be treated with photographic spray painting that highlights the cultural history of the area.



建議筲箕灣船隻修理工場外牆翻新及美化 Possible-Treatment to the Existing Shipyard Façade

海濱連貫性及優化建議方案 Waterfront Connectivity and Enhancement Proposals

高架天梯
Sky Trail



海濱長廊－沿香港海防博物館山坡而建的高架天梯

Waterfront Promenade - SkyTrail along the hillside of the Hong Kong Museum of Coastal Defence



可行的架空行人通道 - 高架天梯 Possible Elevated Walkway "Sky Trail"



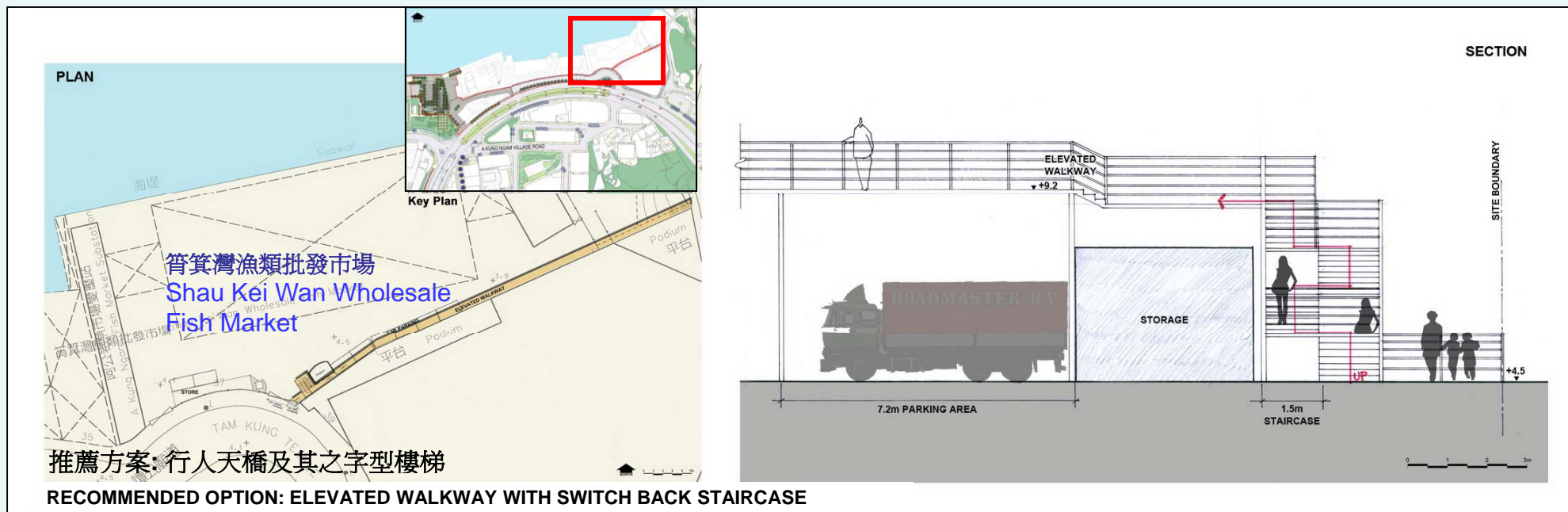
An Elevated Walkway in the Mid-Level of Wooded Hillside

在半山興建架空行人通道 - 高架天梯



經筲箕灣魚類批發市場連接高架天梯

Connection to the Sky Trail via the Shau Kei Wan Wholesale Fish Market



經筲箕灣魚類批發市場的高架行人道

Elevated Walkway through the Shau Kei Wan Wholesale Fish Market

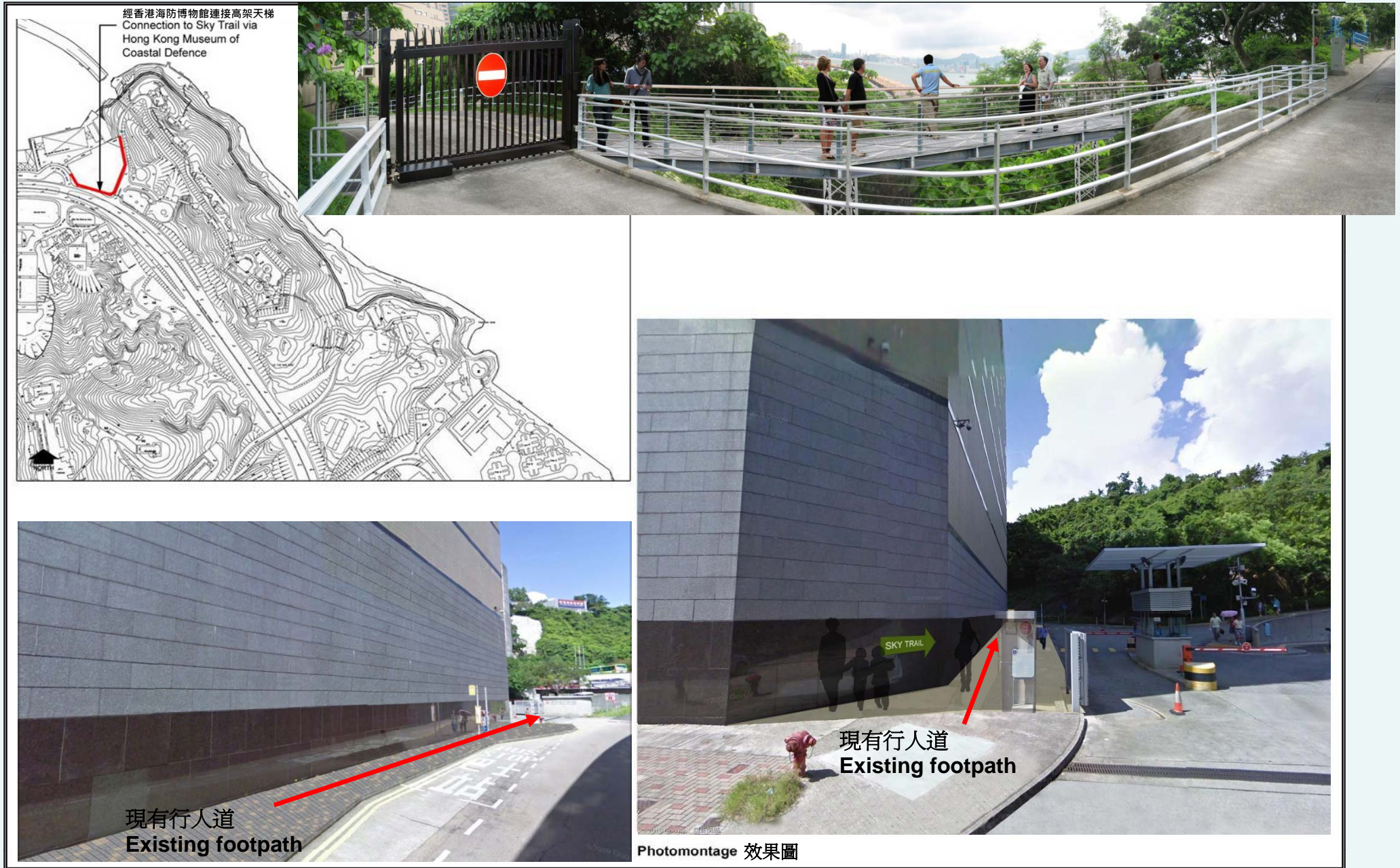


行人天橋及其之字型樓梯
Elevated walkway with
switch back staircase



經高架天梯連接香港海防博物館

Connection to the Sky Trail via the Hong Kong Museum of Coastal Defence



海濱連貫性及優化建議方案 Waterfront Connectivity and Enhancement Proposals

NORTH POINT

QUARRY BAY

SHAU KEI WAN

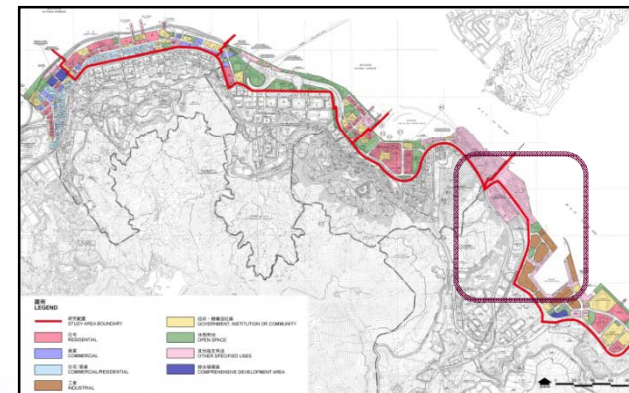
柴灣

CHAI WAN



海濱長廊優化建議方案－柴灣

Waterfront Promenade Enhancement Proposal – Chai Wan



重點改善地點之建議方案

Key Sites Development Proposals

重點改善地點一：北角渡輪碼頭

Key Site No.1: North Point Ferry Piers

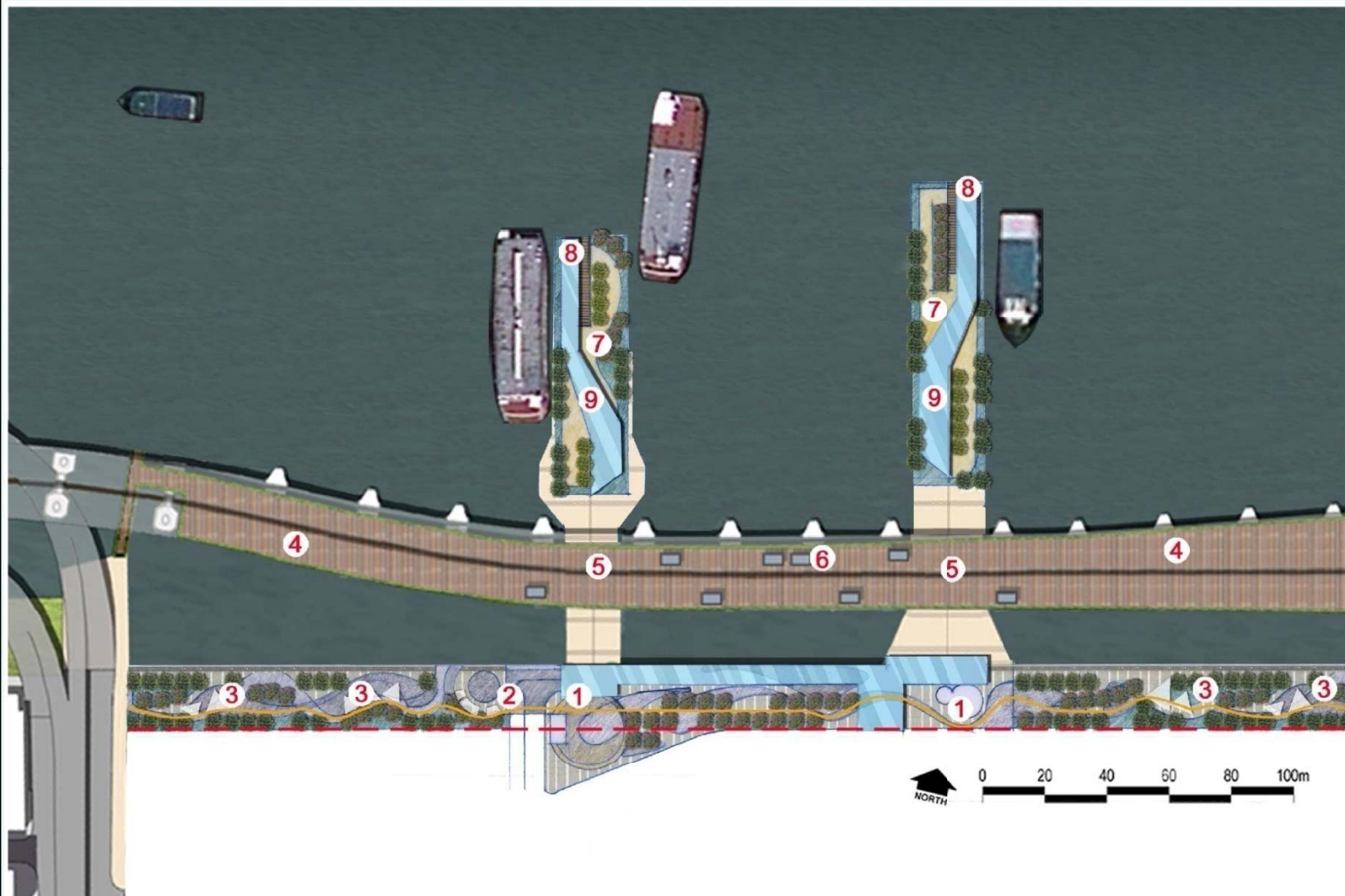


重點改善地點一：北角渡輪碼頭及海濱

Key Site No. 1: North Point Passenger Ferry Pier and Promenade

推薦方案: 動感娛樂為主題的海濱發展

Recommended Option: Vibrant Entertainment-themed Waterfront



圖例 Legend

- 1 文娛廣場
Civic Plaza
- 2 資訊亭
Information Kiosk
- 3 拉索帳篷
Tensile Shelter
- 4 擬議的行人板道，以改善海濱暢達性
Proposed Boardwalk for Improved Waterfront Accessibility
- 5 行人板道貫穿碼頭
Extension of Boardwalk through the Pier Structures
- 6 行人板道附設的零售商舖
Retail Kiosks on the Boardwalk
- 7 於天台提供咖啡店及園境美化地帶供市民享用
Rooftop Cafes and Landscape Areas Accessible to the Public
- 8 觀景台
Viewing Deck
- 9 有蓋行人道
Covered Walkway
- 休閒單車徑
Proposed Informal Cycle Track
- 20米闊的海濱長廊
20m Waterfront Promenade

重點改善地點一：北角渡輪碼頭及海濱 Key Site No. 1: North Point Passenger Ferry Pier and Promenade



建議多元化的活動空間從翻新的北角渡輪碼頭向外伸延
Possible animated activity deck with additional array of diversified uses,
extended from the adaptively renovated North Point Ferry Piers.

重點改善地點之建議方案

Key Sites Development Proposals

重點改善地點二：鯽魚涌海裕街用地

Key Site No.2: Hoi Yu Street Site in Quarry Bay



重點改善地點二：海裕街用地

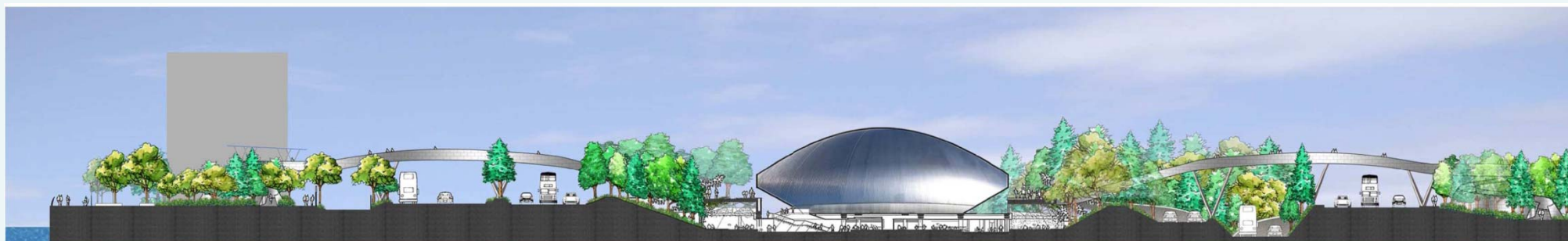
Key Site No. 2: Hoi Yu Street Site

推薦方案：旅遊娛樂為主題的海濱發展

Recommended Option: Tourism and Entertainment-themed Waterfront



參考圖片
Reference Photo



← Proposed tourism and entertainment facilities and open space at the waterfront area of Hoi Yu Street 在海裕街臨海用地提供旅遊娛樂設施及休憩用地 | Feature Bridge 特色行人天橋 | Proposed IMAX Theatre or performance centre at the EHC Tunnel Portal Site 在東區海底隧道出口上蓋空地興建表演中心或動感影院 | Feature Bridge 特色行人天橋 →



重點改善地點二：海裕街用地 Key Site No. 2: Hoi Yu Street Site

Recommended Option: Tourism and Entertainment-themed Waterfront

推薦方案：旅遊娛樂為主題的海濱發展



EXISTING



PROPOSAL



EXISTING



PROPOSAL



街景優化 Streetscape Enhancement



標準化的景觀元素 Standardised Landscape Palette



資料及地標性標誌牌
Information and
Destination Signage

改善行人鋪地
Improved Paving

街道傢具
Street
Furniture

植樹種植池
Tree Planter

行人路燈及懸垂花籃
Pedestrian Lights with
Hanging Baskets

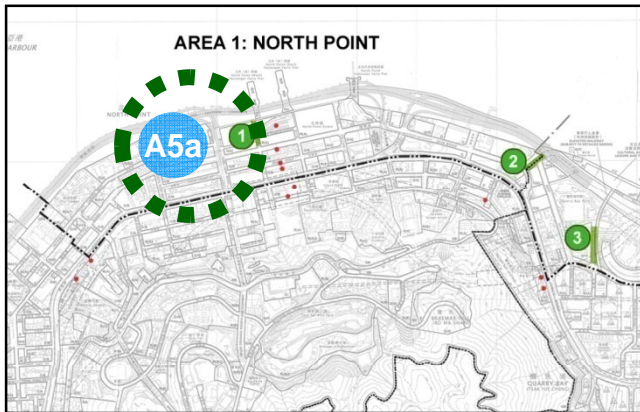
改裝後「地面商舖」
Converting Ground
Floor with Retails

改善後的馬路鋪地
Improved Crossing
Treatment

北角：街景優化－糖水道

North Point: Streetscape Enhancement – Tong Shui Road

A5a 糖水道
Tong Shui Road



索引圖
Key Plan

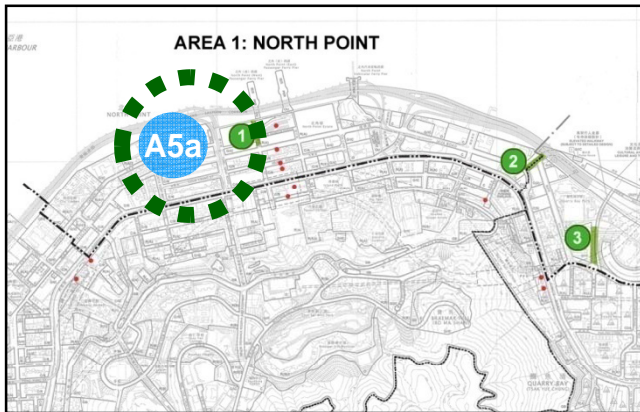


糖水道現狀
Existing (Tong Shui Road)

北角：街景優化－糖水道

North Point: Streetscape Enhancement – Tong Shui Road

A5a 糖水道
Tong Shui Road



索引圖
Key Plan



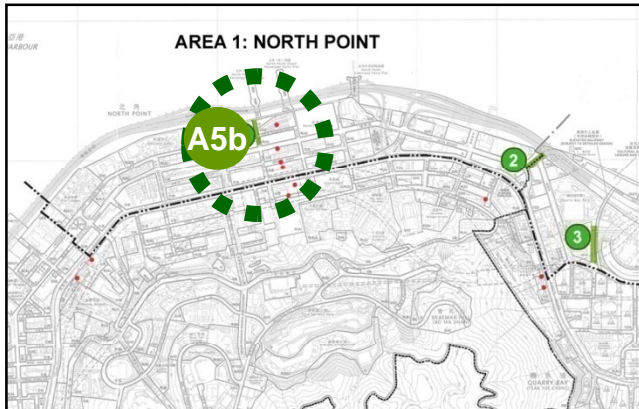
建議優化方案
Proposed Enhancement

北角：街景優化－書局街

North Point: Streetscape Enhancement - Shu Kuk Street

A5b

書局街
Shu Kuk Street



索引圖
Key Plan



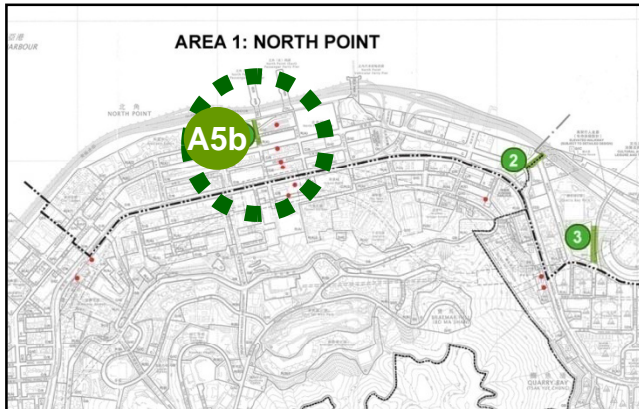
書局街現狀
Existing (Shu Kuk Street)

北角：街景優化－書局街

North Point: Streetscape Enhancement - Shu Kuk Street

A5b

書局街
Shu Kuk Street



索引圖
Key Plan

建議優化方案
Proposed Enhancement

北角：街景優化－健康東街

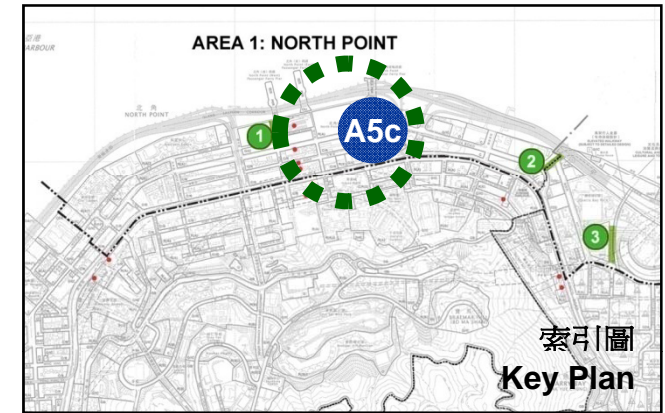
North Point: Streetscape Enhancement – Healthy Street East

A5c

健康東街
Healthy Street East



健康東街現狀
Existing (Healthy Street East)

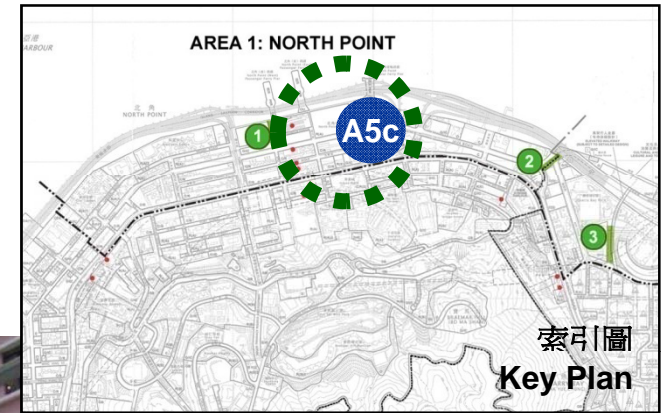


北角：街景優化－健康東街

North Point: Streetscape Enhancement – Healthy Street East

A5c

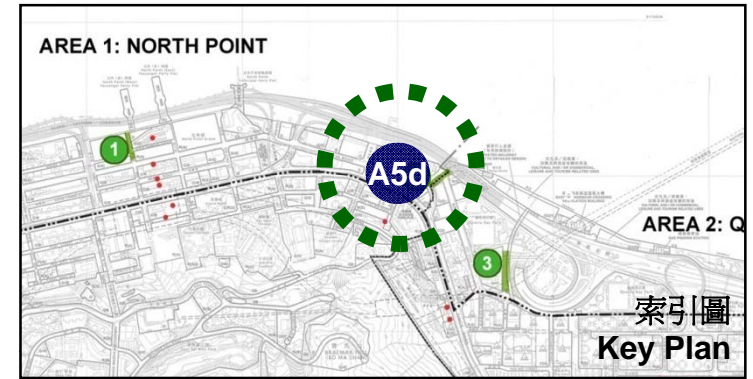
健康東街
Healthy Street East



建議優化方案
Proposed Enhancement -----

鰂魚涌：街景優化－海裕街 Quarry Bay: Streetscape Enhancement – Hoi Yu Street

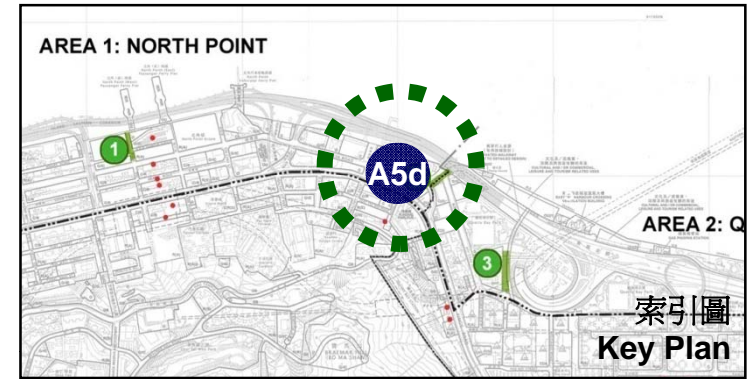
A5d 海裕街
Hoi Yu Street



海裕街現狀
Existing (Hoi Yu Street)

鰂魚涌：街景優化－海裕街 Quarry Bay: Streetscape Enhancement – Hoi Yu Street

A5d 海裕街
Hoi Yu Street



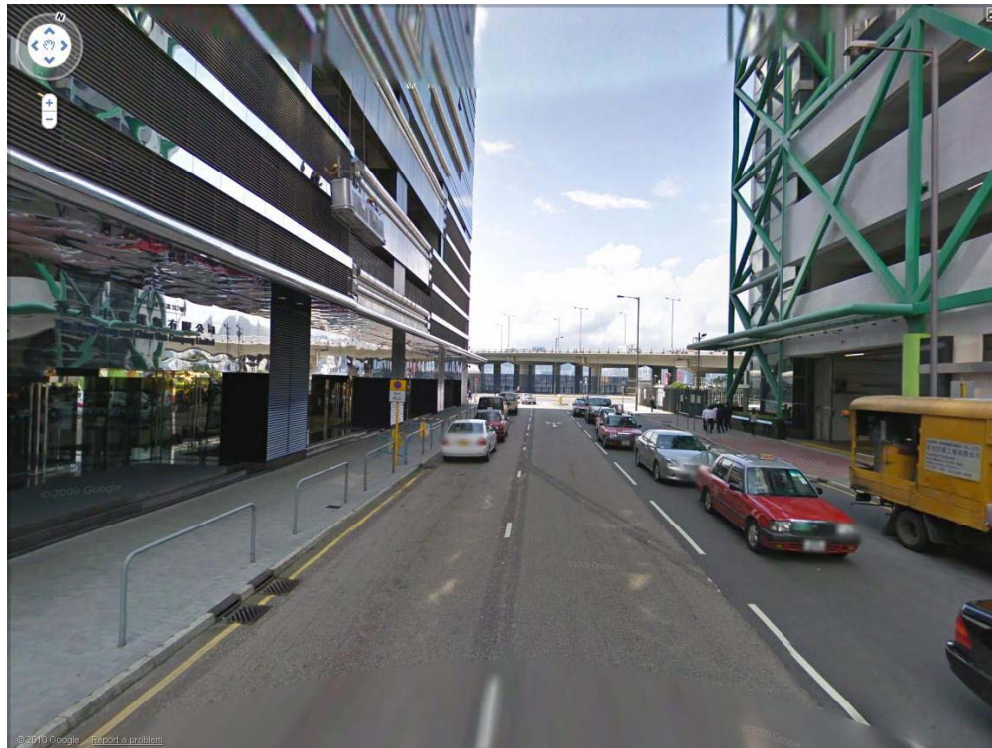
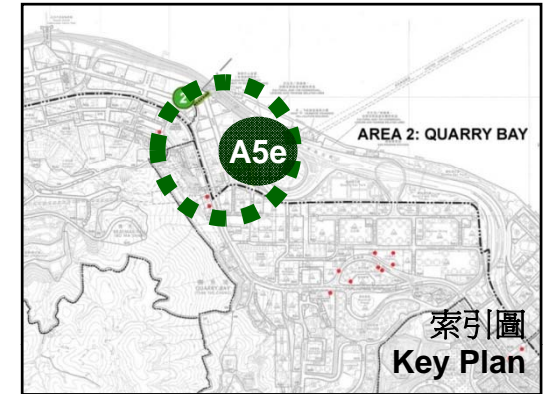
建議優化方案
Proposed Enhancement



鯉魚涌：街景優化－海澤街

Quarry Bay: Streetscape Enhancement – Hoi Chak Street

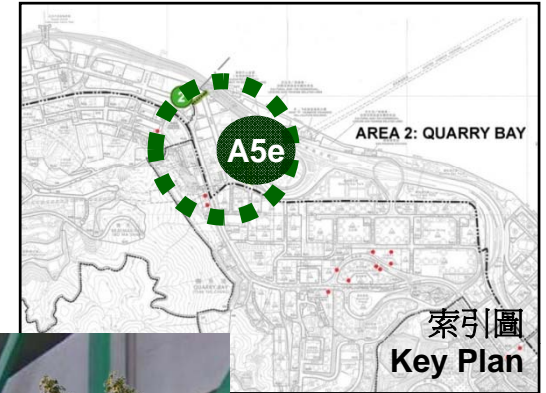
A5e 海澤街
Hoi Chak Street



海澤街現狀
Existing (Hoi Chak Street)

鯪魚涌：街景優化－海澤街 Quarry Bay: Streetscape Enhancement – Hoi Chak Street

A5e 海澤街
Hoi Chak Street

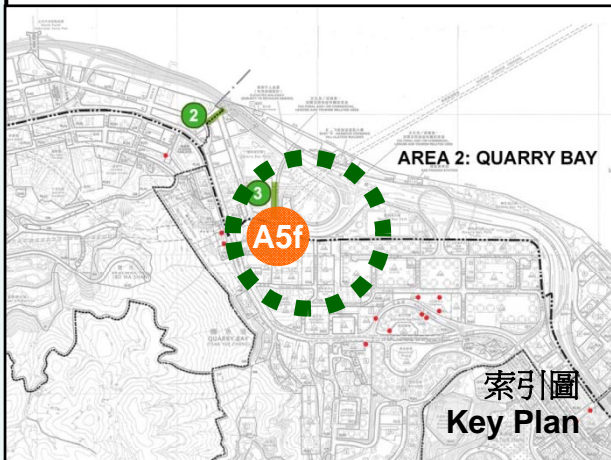


建議優化方案
Proposed Enhancement

鯽魚涌：街景優化－海灣街

Quarry Bay: Streetscape Enhancement – Hoi Wan Street

A5f 海灣街
Hoi Wan Street

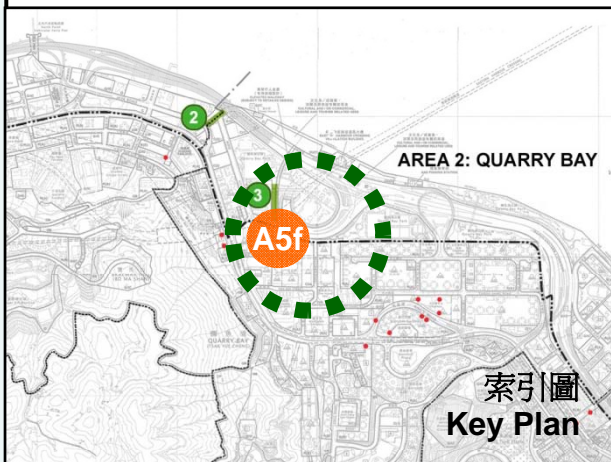


海灣街現狀
Existing (Hoi Wan Street)

鯽魚涌：街景優化－海灣街

Quarry Bay: Streetscape Enhancement – Hoi Wan Street

A5f 海灣街
Hoi Wan Street

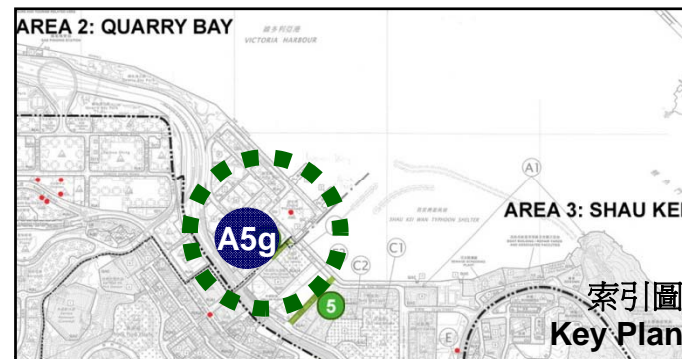


建議優化方案
Proposed Enhancement ...

筲箕灣：街景優化－太安街

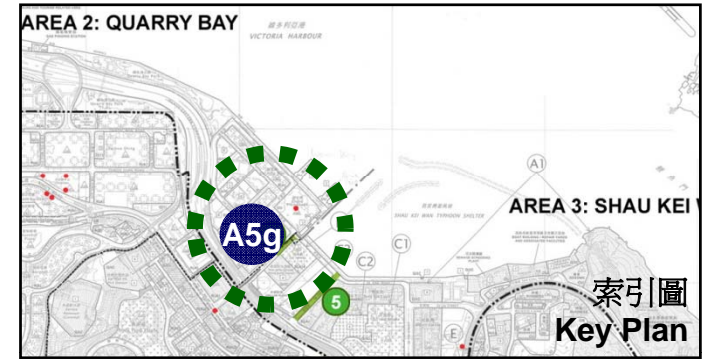
Shau Kei Wan: Streetscape Enhancement – Tai On Street

A5g 太安街
Tai On Street



筲箕灣：街景優化－太安街 Shau Kei Wan: Streetscape Enhancement – Tai On Street

A5g
太安街
Tai On Street

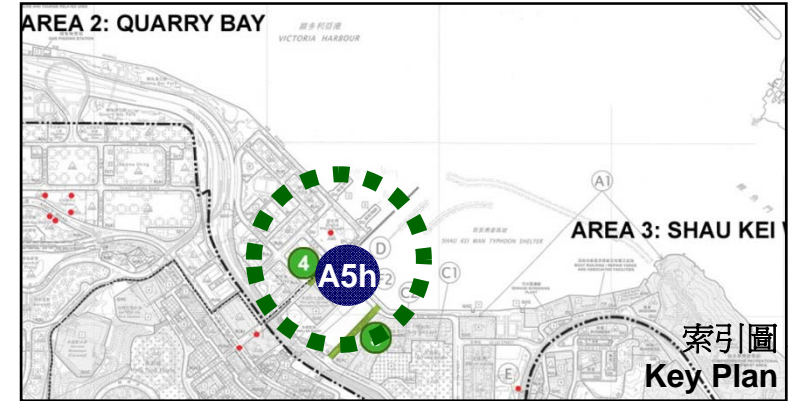


建議優化方案
Proposed Enhancement

筲箕灣：街景優化－愛德街

Shau Kei Wan: Streetscape Enhancement – Oi Tak Street

A5h
愛德街
Oi Tak Street

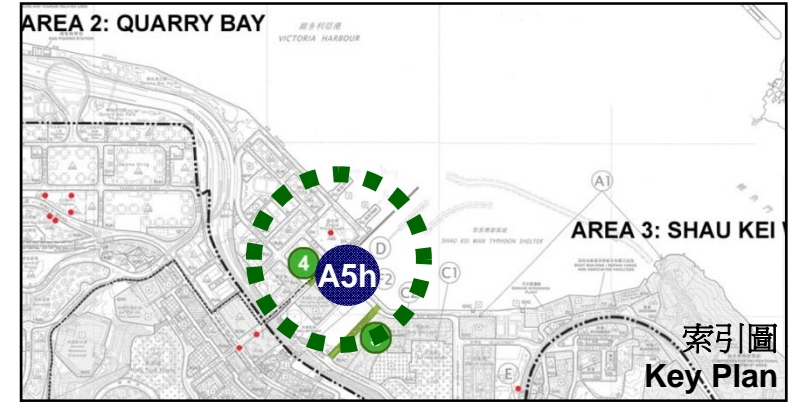


愛德街現狀
Existing (Oi Tak Street)

筲箕灣：街景優化－愛德街

Shau Kei Wan: Streetscape Enhancement – Oi Tak Street

A5h 愛德街
Oi Tak Street



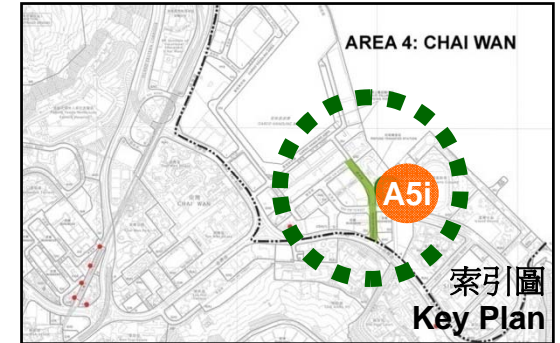
建議優化方案
Proposed Enhancement



柴灣：街景優化－新業街

Chai Wan: Streetscape Enhancement – Sun Yip Street

A5i 新業街
Sun Yip Street

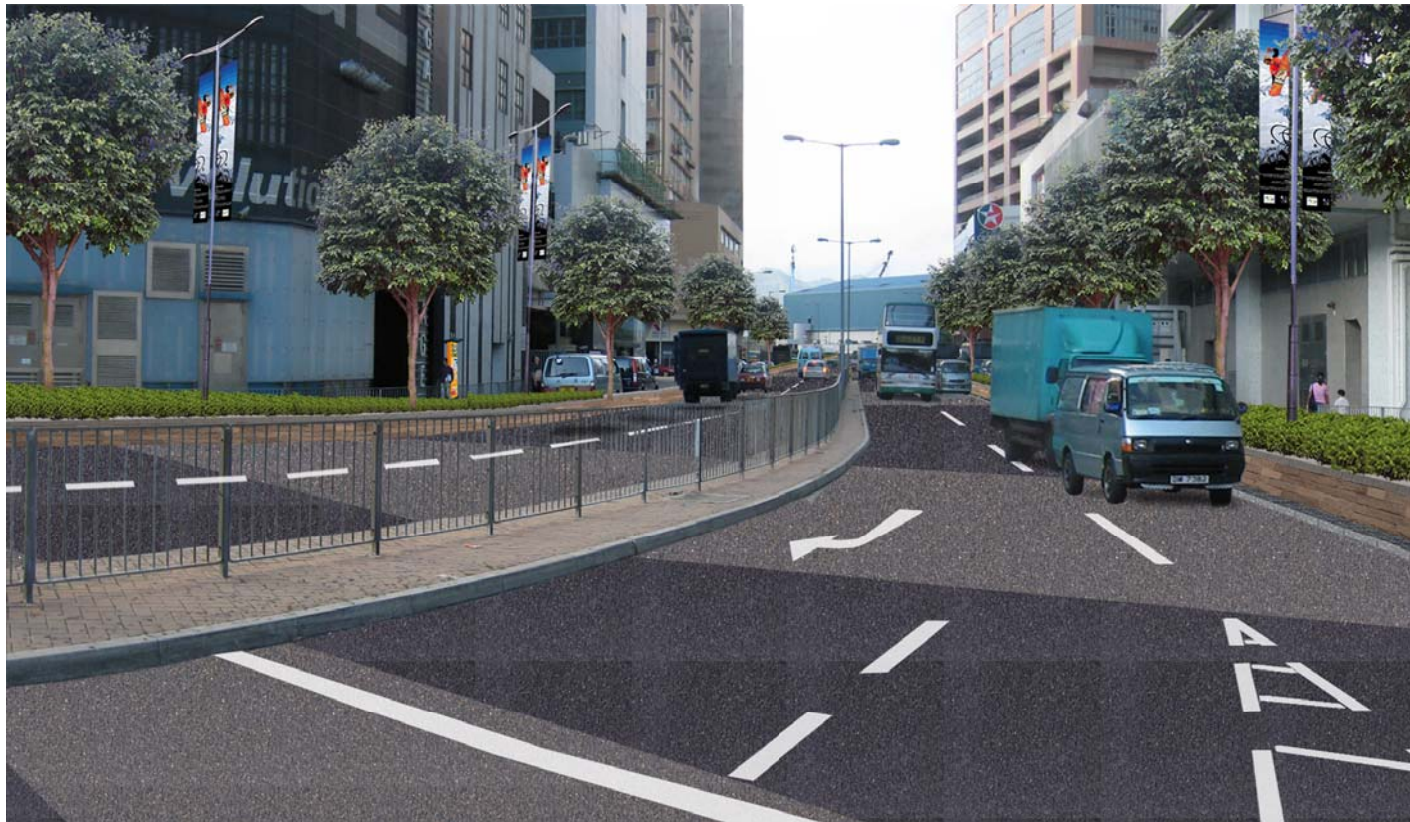
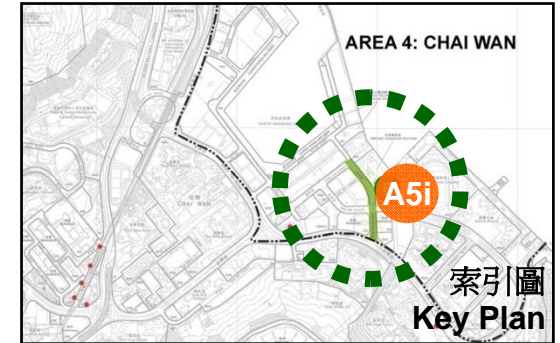


新業街現狀
Existing (Sun Yip Street)

柴灣：街景優化－新業街

Chai Wan: Streetscape Enhancement – Sun Yip Street

A5i 新業街
Sun Yip Street

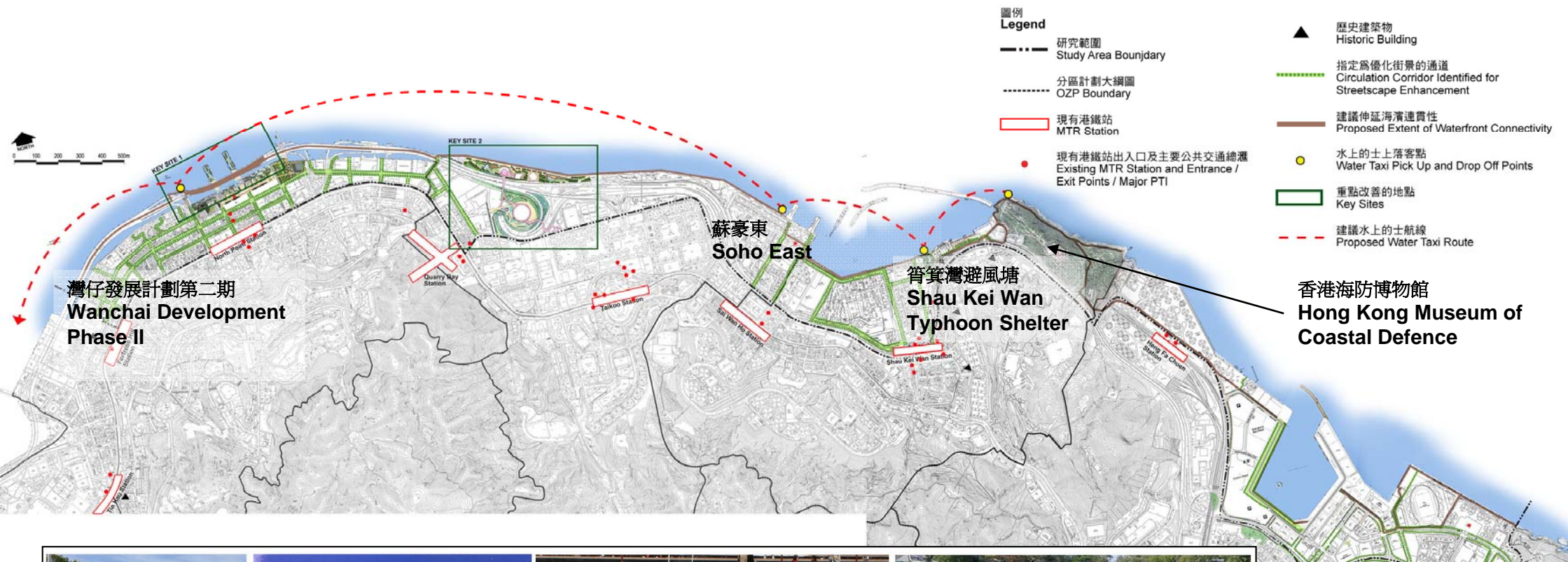


建議優化方案
Proposed Enhancement

擬議水上的士 Proposed Water Taxi



建議水上的士航線 Proposed Water Taxi Route



建議沿東區海旁主要活動區提供水上的士服務及上落客點
Proposed water taxi with pick up and drop-offs at key attraction sites along the Island East Waterfront



實施計劃 Implementation



實施計劃 Implementation

- 由政府以傳統方式負責落實大部份優化建議，包括行人板道及高架天梯，視乎撥款情況及資源調配
Conventional Government development approach for most of the enhancement proposals including the boardwalk and the SkyTrail subject to funding and resource availability
- 就兩處重點改善地點，進一步探討以公私營合作模式的可行性
Public-private partnership/collaboration approach to be further examined for the two key sites
- 須就複雜的優化建議包括行人板道及高架天梯進行進一步的詳細設計、技術評估及工程可行性研究
Further detailed design, technical assessments and engineering feasibility studies for more complicated proposals including the boardwalk and the Sky Trail
- 進一步研究和解決相關的技術問題，例如行人板道建議是否符合《保護海港條例》的規定，以及對私人業權及海上通行權的影響
Further investigation and resolution of relevant technical issues e.g. compliance with the Protection of the Harbour Ordinance in relation to the boardwalk proposal, impact on private property right and marine access right



Agreement No. CE 61/2008 (TP)



港島東海旁研究

Hong Kong Island East Harbour-front Study

港島區海濱發展專責小組

Task Force on Harbour-front Developments on
Hong Kong Island



Supported by **AECOM**

30 August 2011