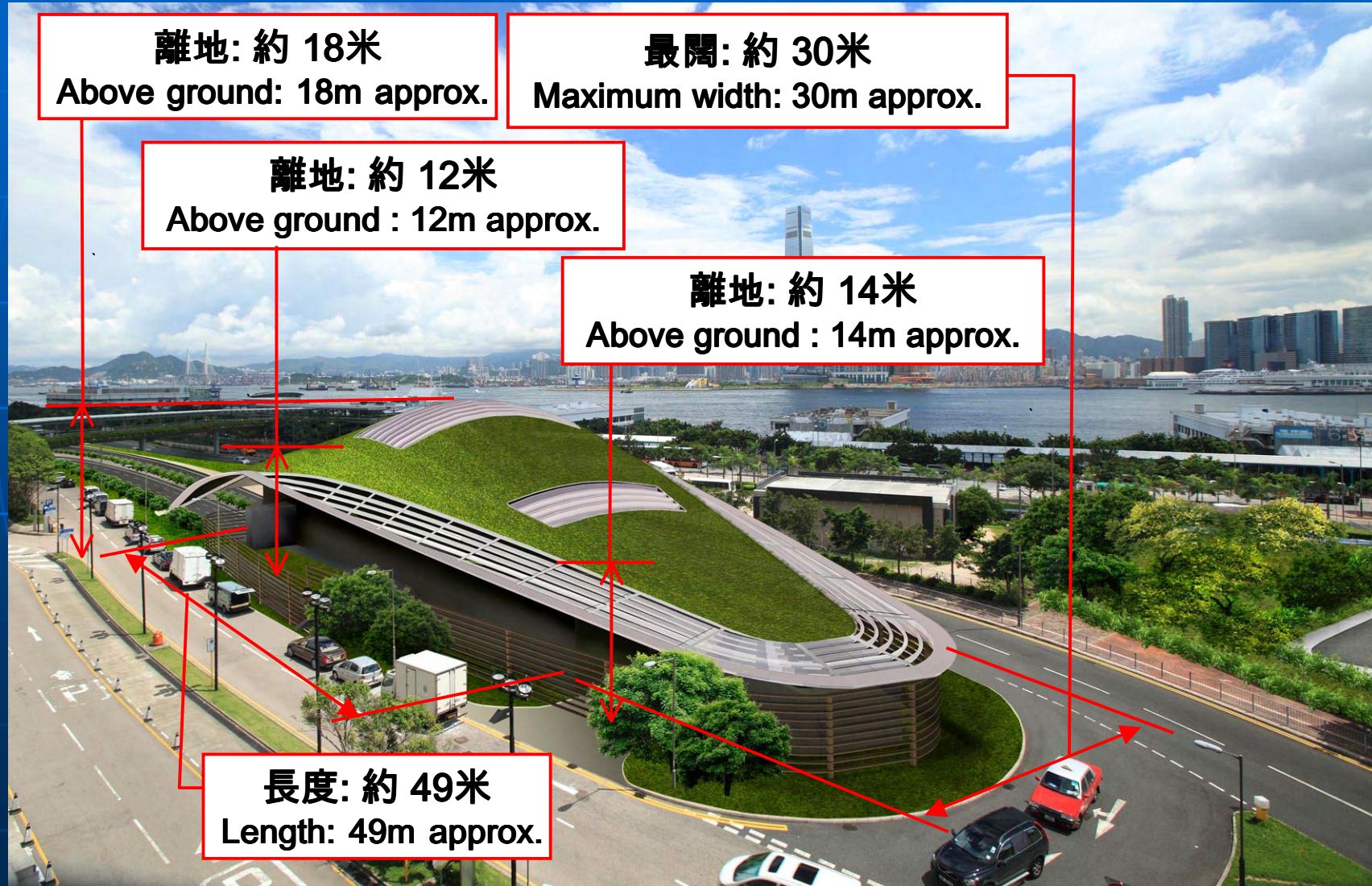




西面通風大樓的尺寸 Size of the West Ventilation Building



離地: 約 18米
Above ground: 18m approx.

最闊: 約 30米
Maximum width: 30m approx.

離地: 約 12米
Above ground : 12m approx.

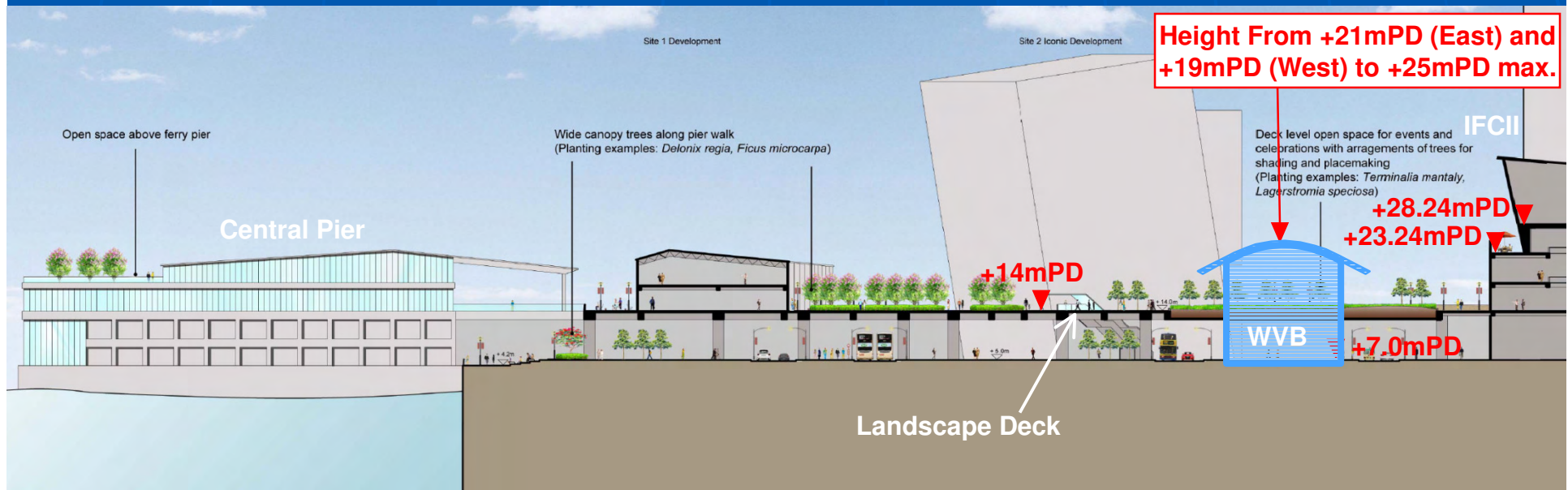
離地: 約 14米
Above ground : 14m approx.

長度: 約 49米
Length: 49m approx.



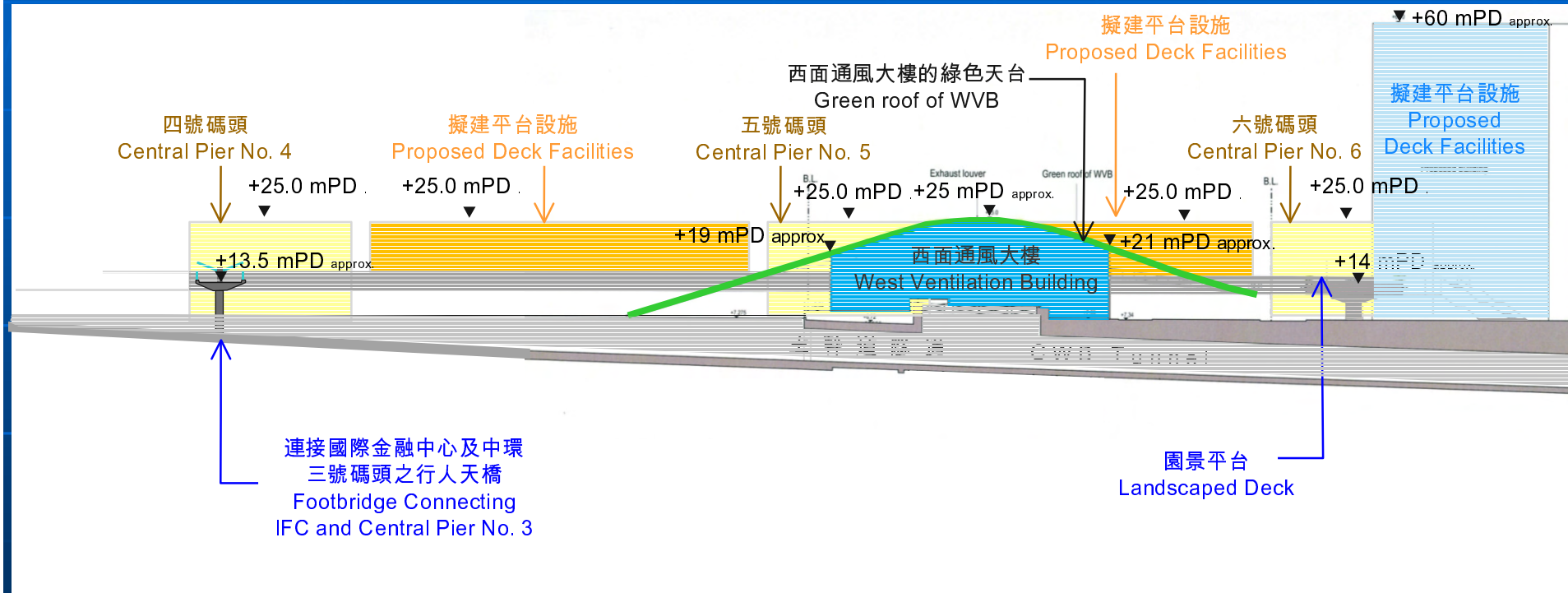
中環海濱1號用地, 園景平台, 西面通風大樓及IFC 的橫切面(向東面看)

Section Through Central Harbourfront Site 1, Landscape Deck, WVB and IFC (Looking East)



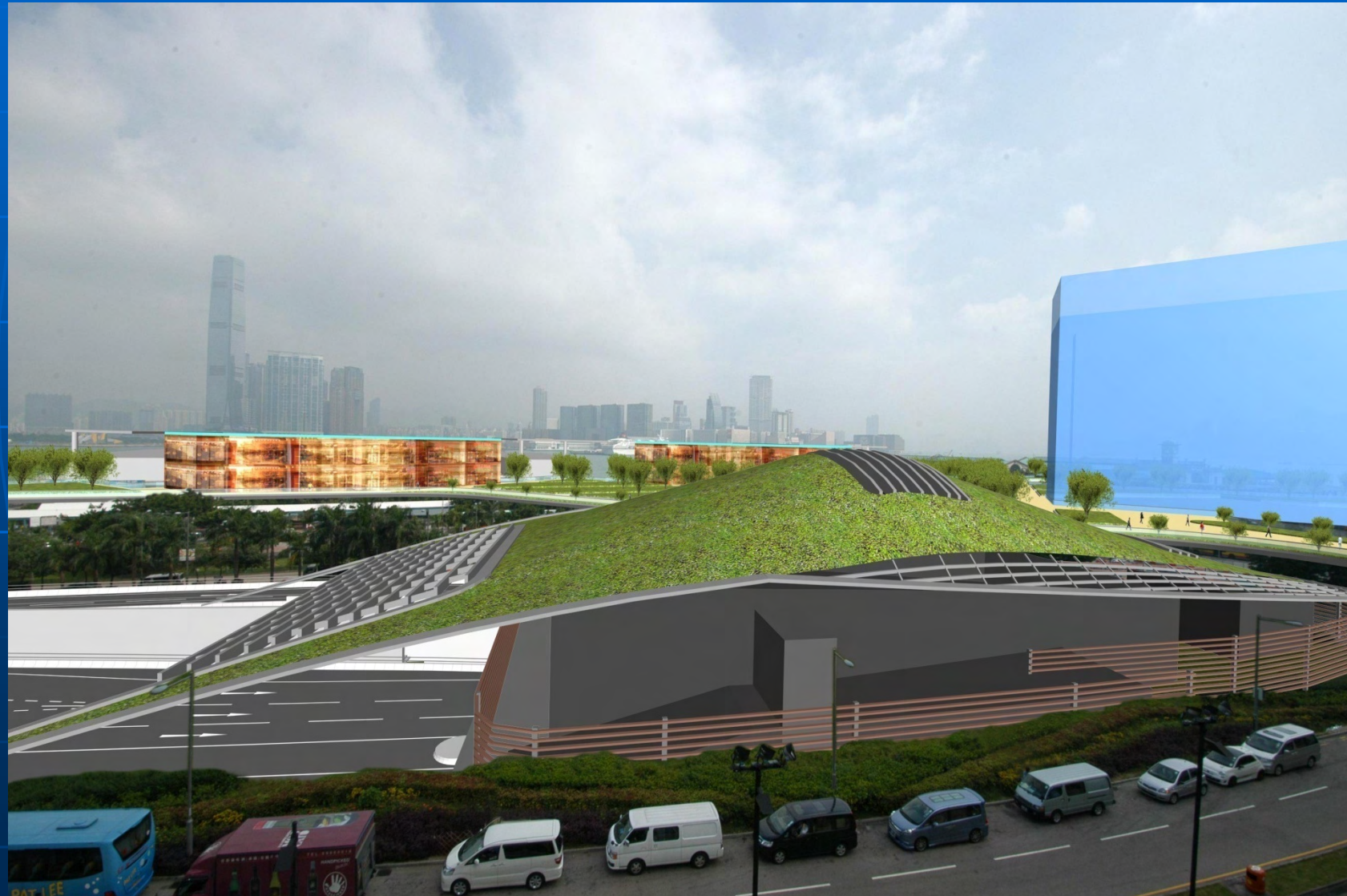


園景平台,西面通風大樓及三號碼頭之行人天橋的橫切面(向北面看) Section Through Future Landscaped Deck, WVB and Pier 3 Footbridge (Looking North)



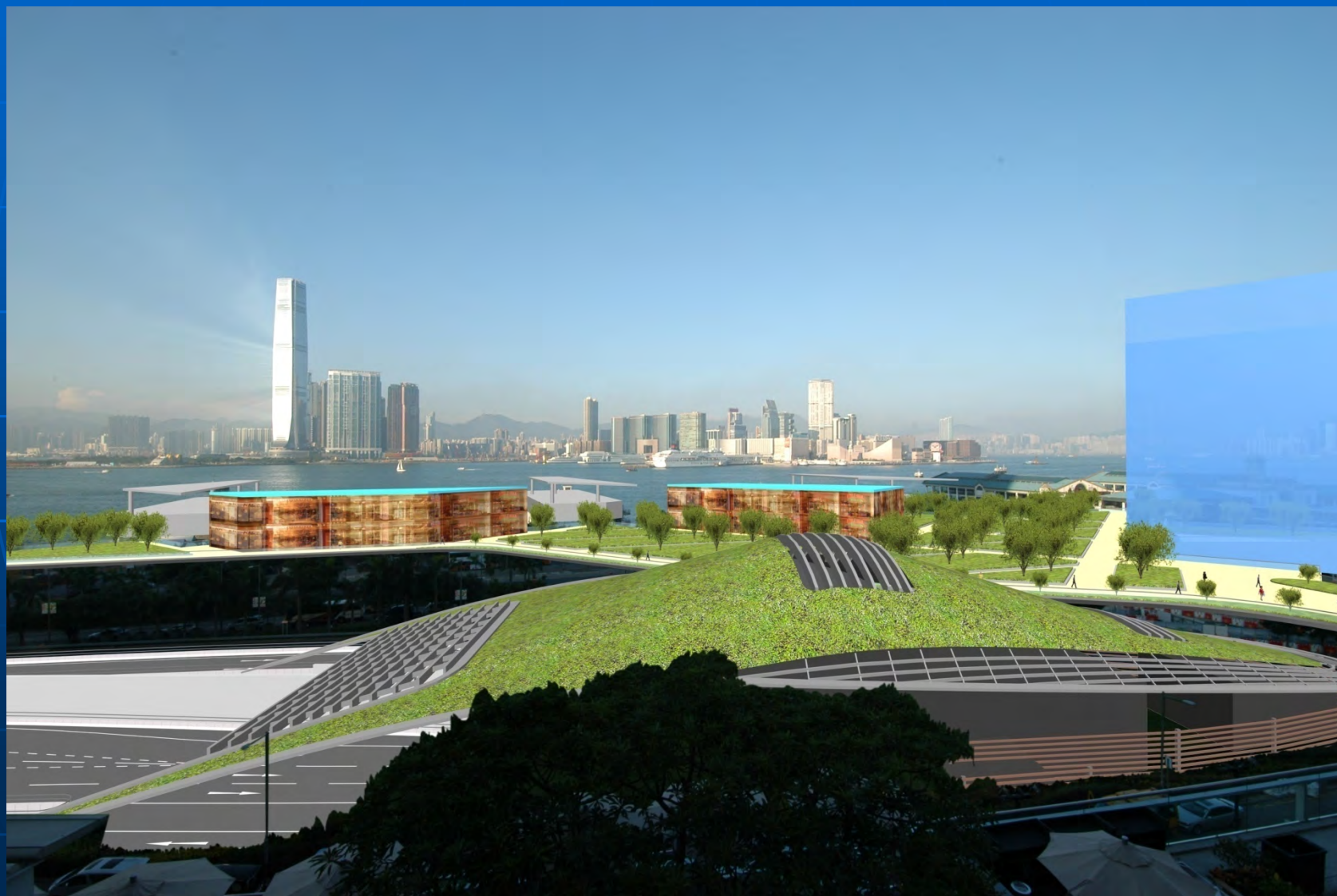


西面通風大樓建成後國際金融中心平台P3層的景觀 View from IFC Podium Level 3 – With WVB





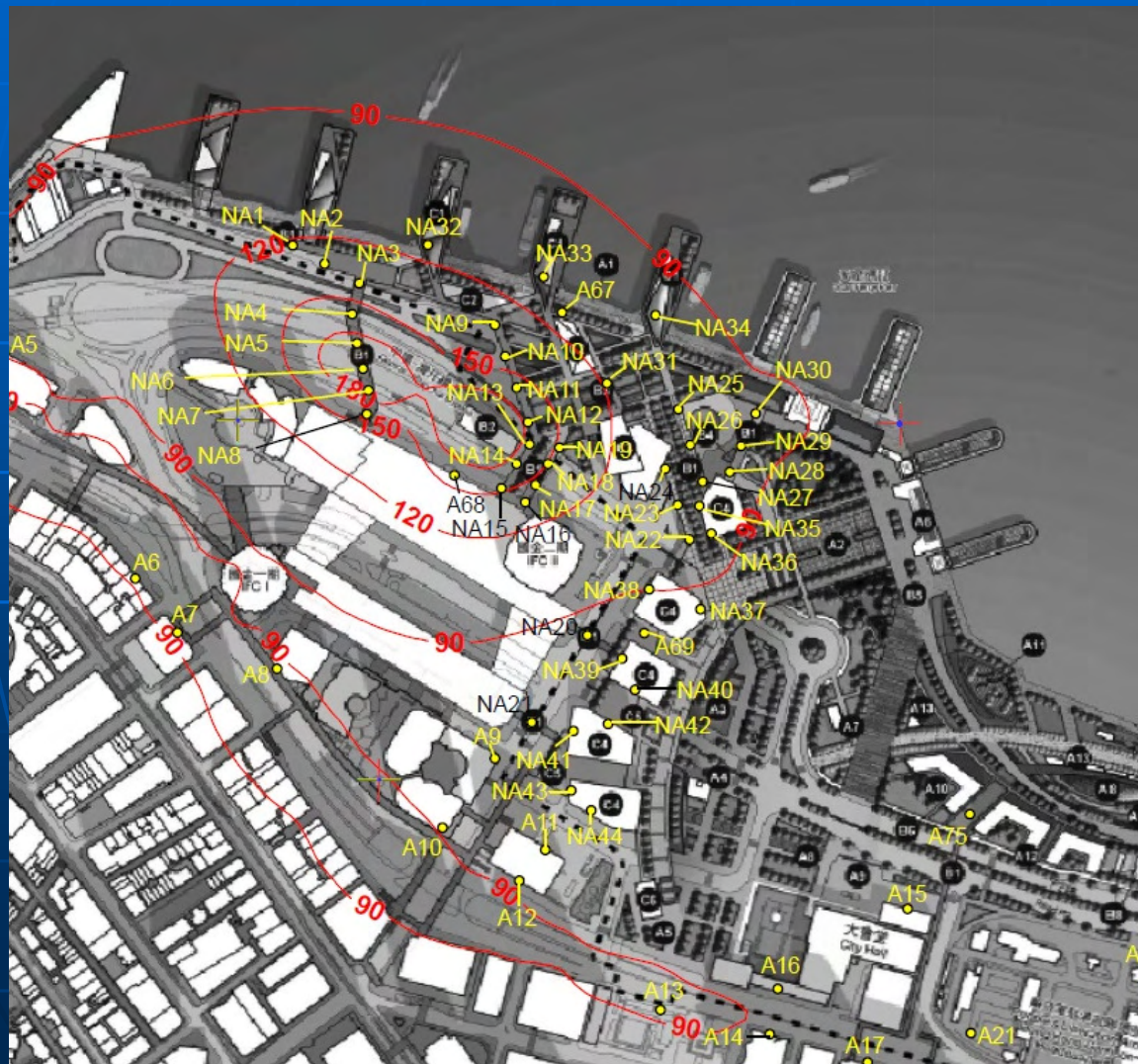
西面通風大樓建成後國際金融中心平台P4層的景觀 View from IFC Podium Level 4 – With WVB





累計平均二氧化氮的濃度 (裝設空氣淨化系統後)

Contours of Cumulative Average NO₂ Concentration (with APS)



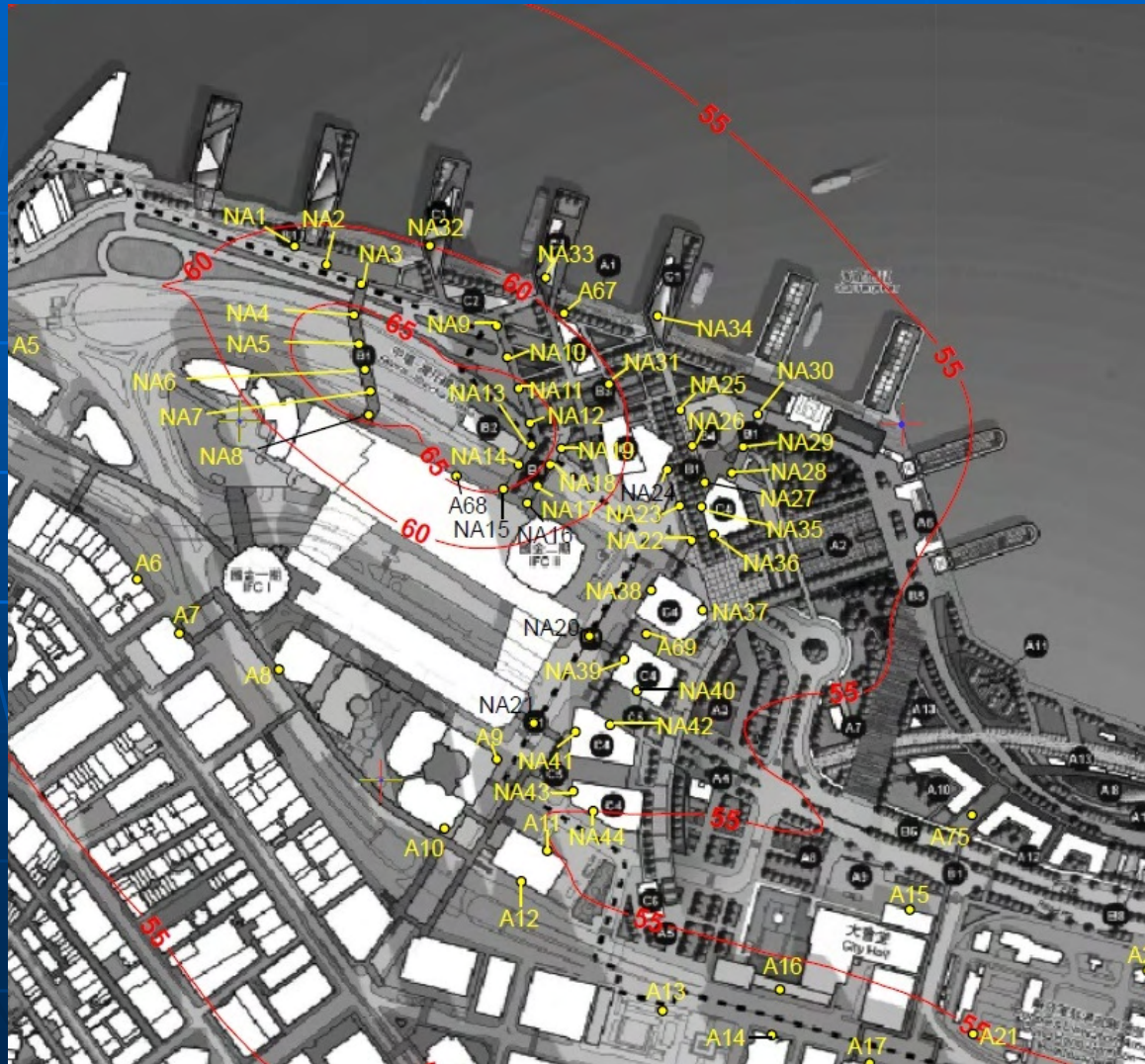
標準 (現時的空氣質素指標):
每立方米300微克

criteria (existing AQO): 300
 $\mu\text{g m}^{-3}$



累計平均可吸入懸浮粒子的濃度 (裝設空氣淨化系統後)

Contours of Cumulative Average RSP Concentrations (with APS)



可吸入懸浮粒子標準 (現時的空氣質素指標): 每立方米
180微克

RSP criteria (existing
AQO): $180 \mu\text{g m}^{-3}$



2001年環境影響評估西面通風大樓及隧道入口景觀 Year 2001 EIA – View of West Ventilation Building and Portal



IFC II
國際金融中心
二期

West Ventilation Building
西面通風大樓

| | | | |
|--|---------------|---|--|
| Project Issue | | Rev. No. | |
| Highways Department 路政署 | | Major Works Project Management Office (MWO) | |
| CENTRAL - WAN CHAI BYPASS AND IEC LINK PROJECTS REVIEW STUDY | | | |
| WEST VENTILATION BUILDING AND PORTAL VIEW 5 | | | |
| MAUNSELL CONSULTANTS ASIA LTD 馬善士亞洲建築師事務所 | | | |
| DRGNO. | FIGURE 7.14 | Mausnell | |
| SCALE | DATE OF SHEET | | |
| DATE | DESIGN | | |
| DATE | NTS | | |
| © COPYRIGHT RESERVED | | | |