



Agreement No. CE 61/2008 (TP)



# Hong Kong Island East Harbour-front Study

## Task Force on Harbourfront Developments on Hong Kong Island



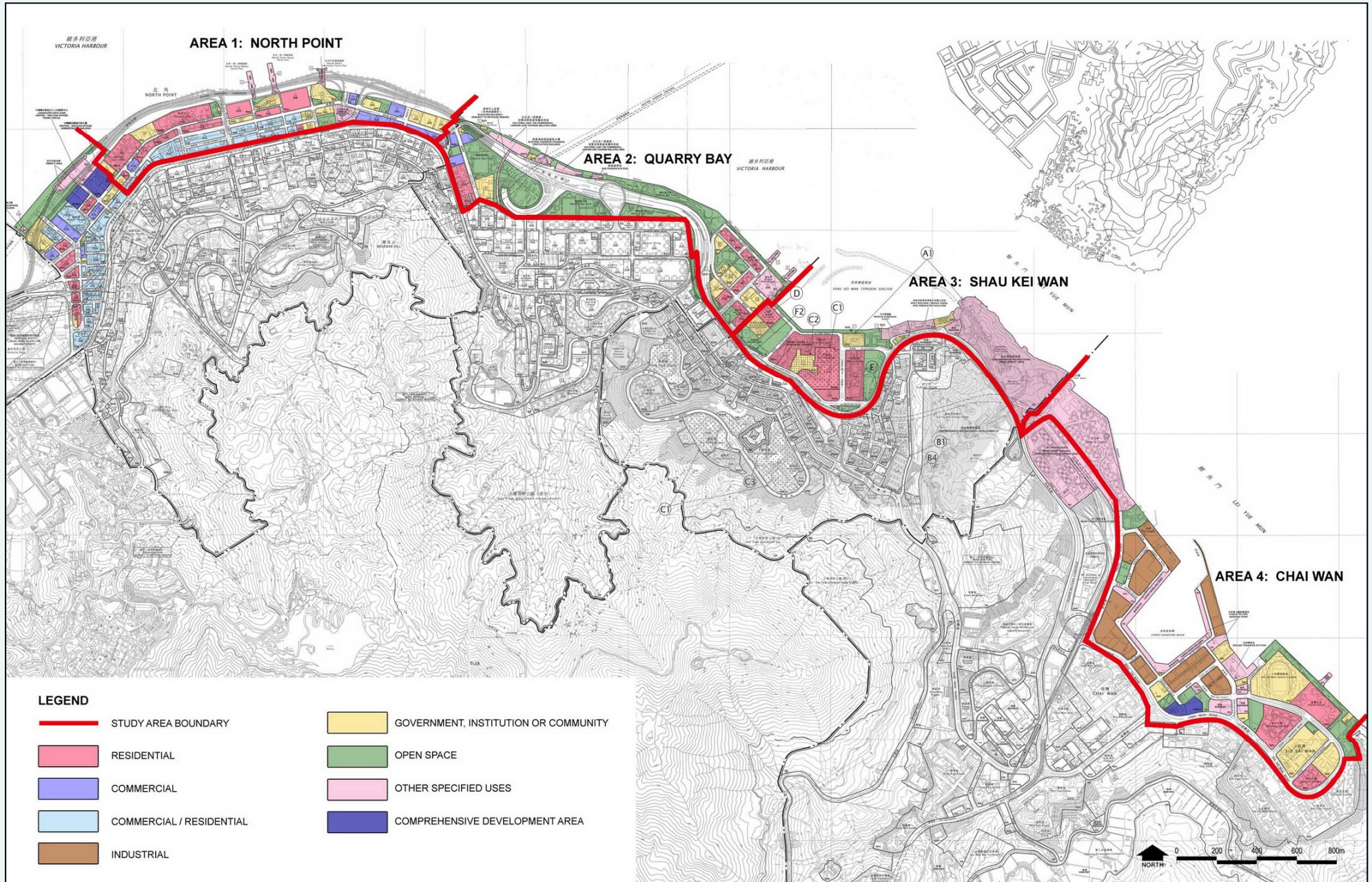
Supported by **AECOM**

2 December, 2010

# Introduction



# Planning Area Subdivided into Sub Planning Areas by Current Statutory Plans



# Hong Kong Island East Harbour-front Study: Key Design Objectives



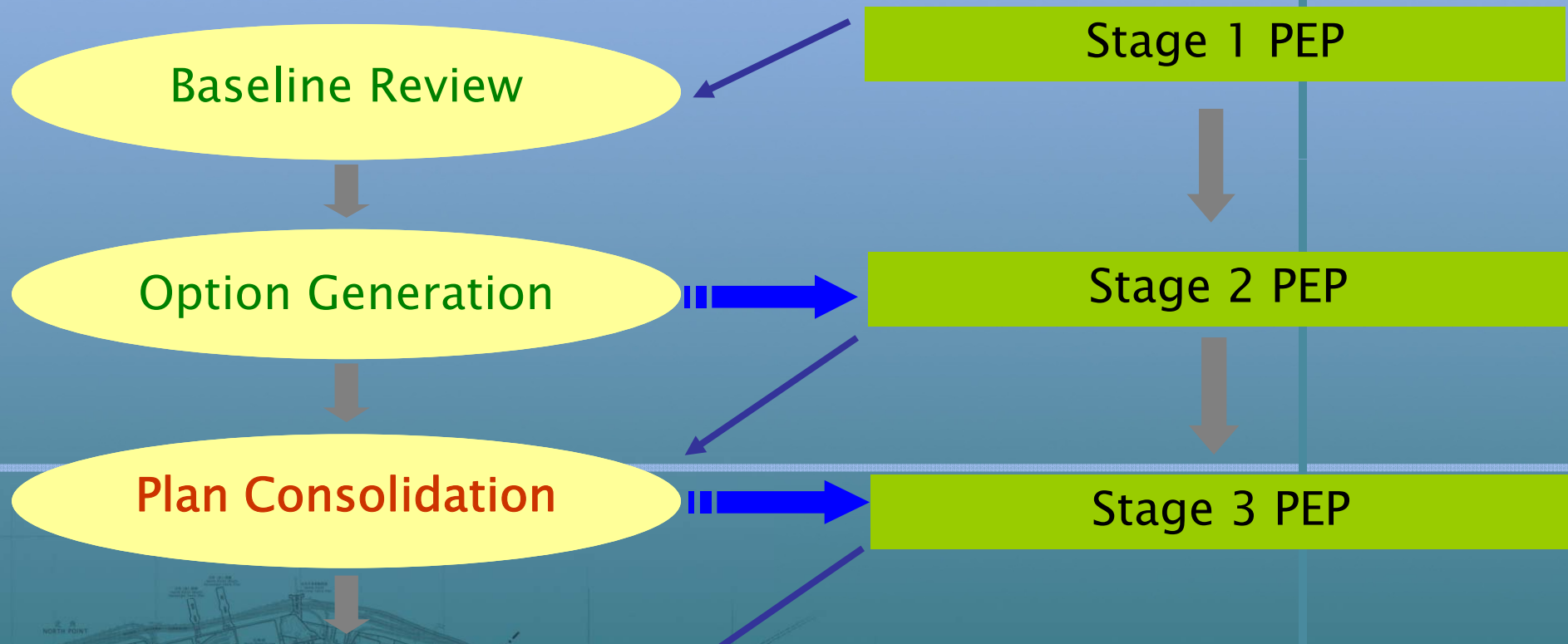
- To promote a wide variety of activities and visual linkages to the harbour.
- To provide for comprehensive linkage between the existing podium deck and the waterfront.
- To provide a scale and arrangement of development that is consistent with the Harbour Planning Principles, and which promote visual variety and diversity.
- To provide a waterfront of development that relates to its environment and which forms a logical physical extension of the existing urban area.



# Study Programme and Progress

## Planning Study

## Public Engagement Programme (PEP)



Baseline Review

Stage 1 PEP

Option Generation

Stage 2 PEP

Plan Consolidation

Stage 3 PEP

Final Reporting

### Plan Consolidation Stage

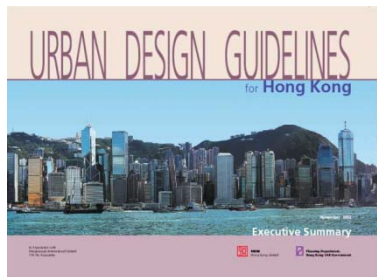
- Evaluation of Initial Options
- Technical Assessments
- Formulation of Preferred Option
- Implementation Strategy

Anticipated completion: Mid 2011

# The Evaluation Process

Parameters for formulation of Initial Options defined by:

- The Brief
- Government
- Town Planning Board
- Harbour-front Enhancement Committee
- HKPSG
- HKPSG Urban Design Guidelines



**HONG KONG PLANNING STANDARDS AND GUIDELINES**



Identification of initial options of enhancement proposals



Solicit public views on initial options



Reconcile public views & identify preferred enhancement option



Aerial view of the re-developed pier structures with the Proposed Boardwalk under the IEC



Street view of the re-developed pier structures with the Proposed Boardwalk under the IEC



Possible animated activity deck with additional array of diversified uses, extended from the adaptively redeveloped North Point Passenger Ferry Pier structures.



# TOWN PLANNING BOARD HARBOUR PLANNING GUIDELINES

## Vision:

- To make Victoria Harbour attractive, vibrant, accessible and symbolic of Hong Kong – “a harbour for the people and a harbour of life”.

## Goals:

- To bring the people to the Harbour and the Harbour to the people.
- To enhance the scenic views of the Harbour and maintain visual access to the harbour-front.
- To enhance the Harbour as a unique attraction for our people and tourists.
- To create a quality harbour-front through encouraging innovative building design and a variety of tourist, retail, leisure and recreational activities, and providing an integrated network of open space and pedestrian links.
- To facilitate the improvement of the water quality of the Harbour.
- To maintain a safe and efficient harbour for the transport of people and goods and for the operation of an international hub port.

## 維多利亞港—理想和目標 Vision & Goals for Victoria Harbour



1999年10月  
OCTOBER 1999

城市規劃委員會  
TOWN PLANNING BOARD

## Statement of Intent on Reclamation:

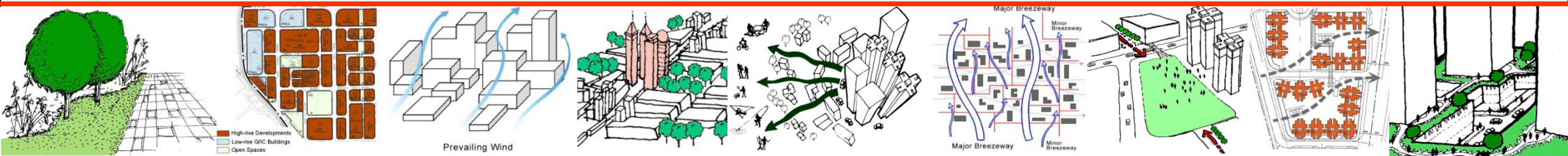
- The Harbour is to be protected and preserved as a special public asset and a natural heritage of the people of Hong Kong.



# URBAN DESIGN GUIDELINES FOR HONG KONG

## Key Design Guidelines for the Waterfront:

- Appropriate Height Controls at the Waterfront
- Physical Height & Diversity in Functions
- Innovative Waterfront Design
- Tourism Orientated Waterfronts
- View Corridors and Breezeways
- Avoidance of the “Wall Effect”
- Connectivity & Accessibility
- Avoidance of Major Infrastructure Projects at Waterfront
- Balanced Hard & Softscape with an Emphasis on “Green Spaces”





# HEC HARBOUR PLANNING GUIDELINES

**Public Engagement:** relationship between scale of development and form of public engagement;

**Land Use Planning:** uses to promote vibrancy of Harbour; provisions for maritime and logistics facilities and relocation of incompatible land uses;

**Urban Design:** Approaches are to focus harbour-front development at an appropriate density;

**Landscaping:** Emphasis is placed on landscape measures along harbour-front; the use of appropriate planting species;

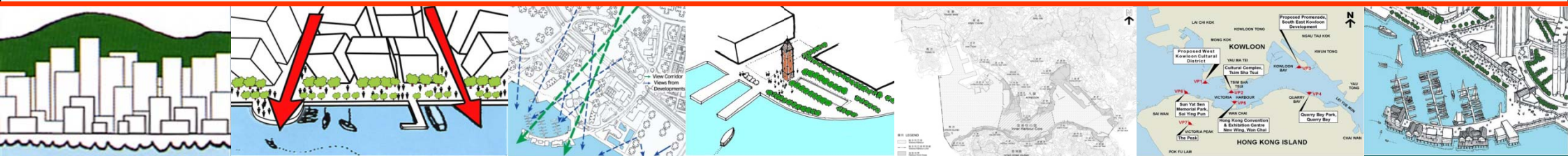
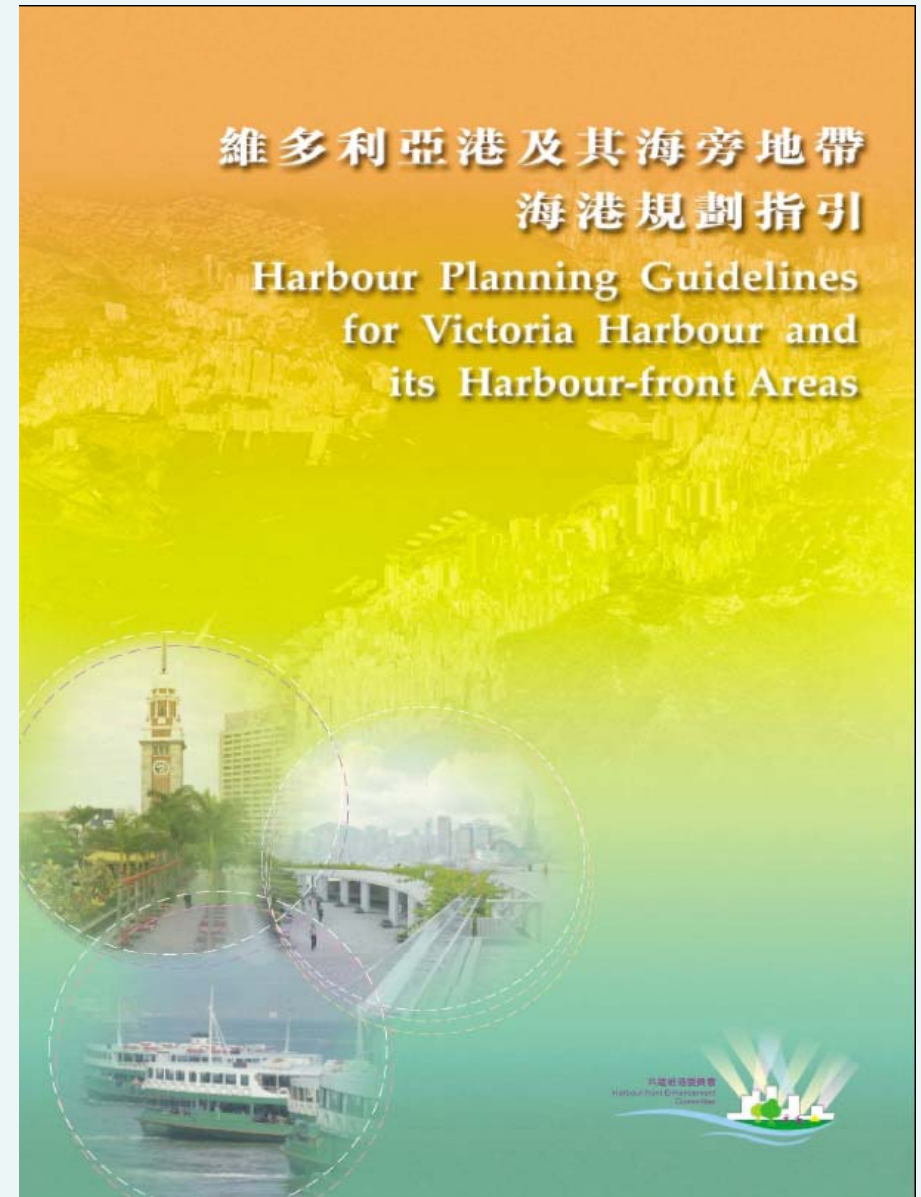
**Physical Linkage:** the promotion of a traffic-free environment; continuous pedestrian at-grade access;

**Land Formation:** overriding public need test for reclamation required to be satisfied with emphasis on minimal land formation and harbour-front enhancement.

**Harbour-front Management:** public and private partnership;

**Sustainable Development:** due consideration to economic, social and environmental aspects is to be given, taking into account long-term versus short-term benefits with reference to a sustainability assessment;

**Temporary Land Uses:** consideration of temporary uses along the harbour-front should be considered where practical;



# Stage 2 Public Engagement Programme

## Engagement Workshop (8/5)

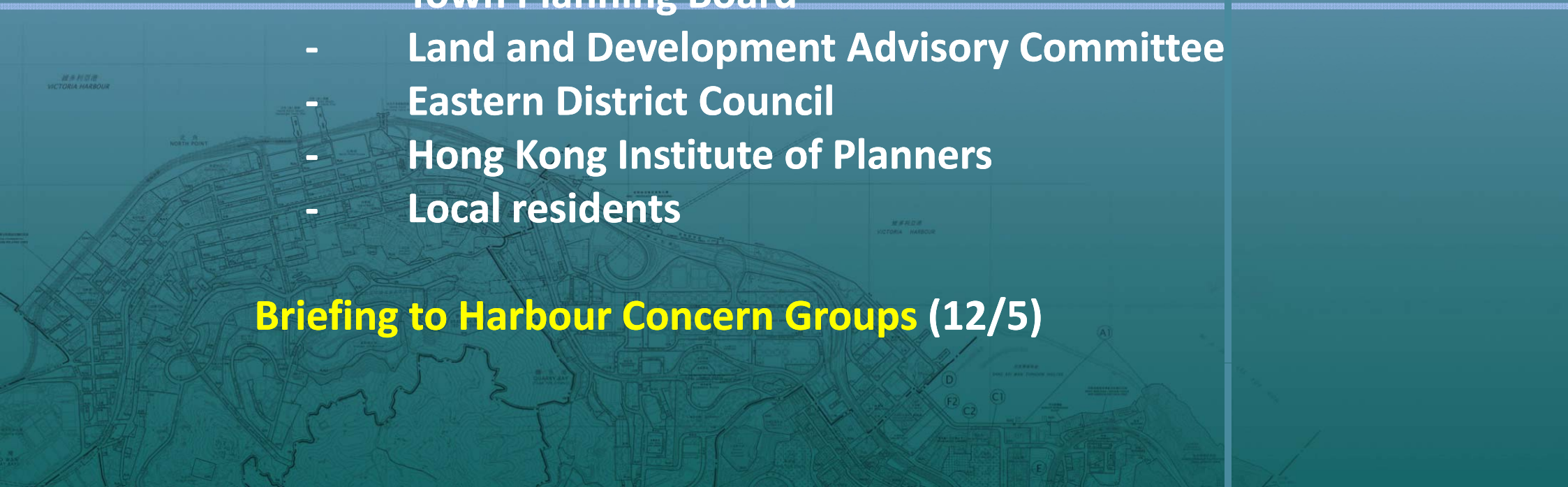
## Roving Exhibitions

- Cityplaza (1-7/5)
- Shau Kei Wan MTR Station concourse (15-21/5)

## Briefings to Statutory and Advisory Bodies (16/4 - 10/7)

- Town Planning Board
- Land and Development Advisory Committee
- Eastern District Council
- Hong Kong Institute of Planners
- Local residents

## Briefing to Harbour Concern Groups (12/5)



# Stage 2 Public Engagement: Public Views

- ✓ Generally support the proposals to enhance the connectivity to and streetscape of major pedestrian corridors to the waterfront

## **Boardwalk under the IEC**

- ✓ Strong support for Boardwalk proposal
- ✓ Some concerns on security, safety, durability of the materials and loading capacity

## **SkyTrail/Cantilevered Boardwalk**

- ✓ Well received by the general public
- ✓ Strong objection from Heng Fa Chuen residents to the proposed connection with the existing promenade in Heng Fa Chuen (under private ownership). An alternative route is proposed to connect inland to Lei Yue Mun Park

## **Waterfront Proposal in Sai Wan Ho**

- ✓ Elevated walkway proposal over the Marine Police premises was generally not preferred for the reasons of conflict with the Marine Police operation, low user-friendliness and cost-effectiveness, and inconvenience to the elderly and the disabled
- ✓ Most public users preferred to use the pavement along existing roads

# Stage 2 Public Engagement: Public Views

## Waterfront Proposal in Shau Kei Wan

- ✓ Concern over proposed relocation of shipyards at Tam Kung Temple Road for waterfront promenade provision
- ✓ Suggestion to conserve shipyards and Shau Kei Wan Wholesale Fish Market to manifest the history of fishing village at Shau Kei Wan

## Cycling and Fishing Facilities

- ✓ Diverse views: some are keen to have a continuous cycle track and a designated area for fishing, others concerned over pedestrian safety

## Streetscape Enhancement Proposals

- ✓ Additional streetscape enhancement at Healthy Street East, Tong Shui Road and Hoi Chak Street proposed to enhance pedestrian experience.

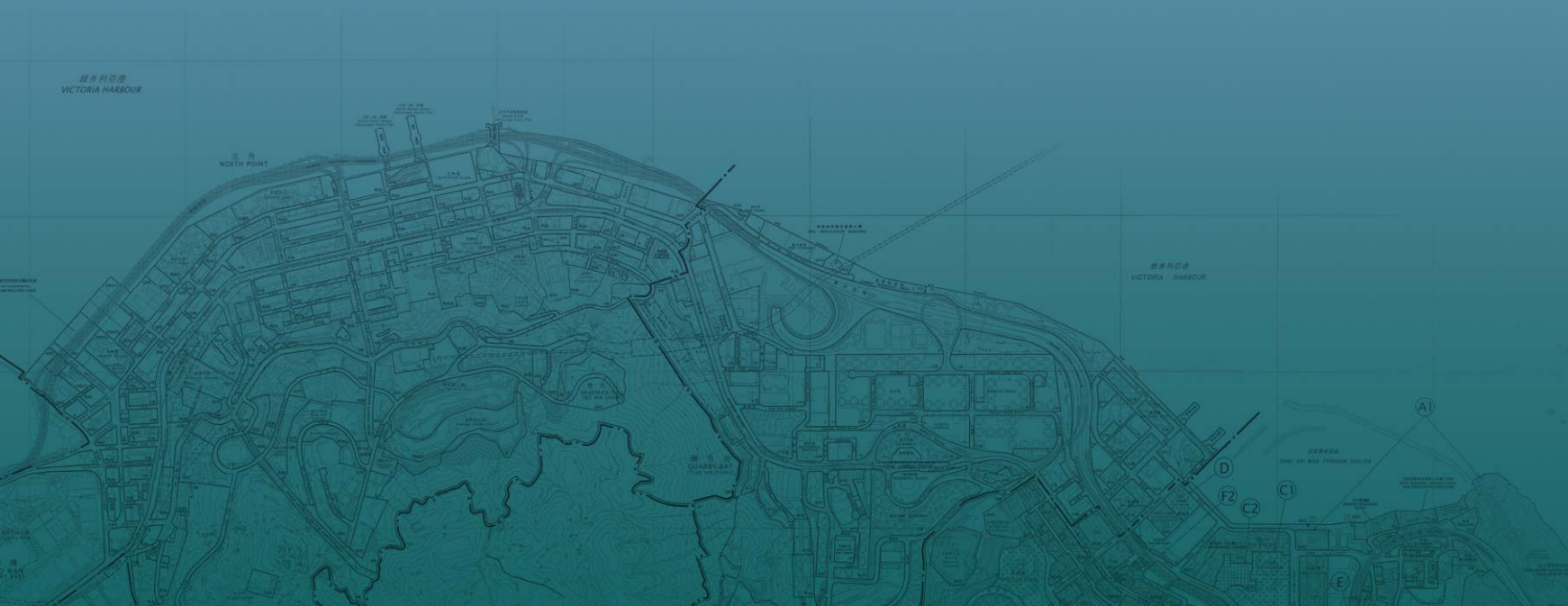
## Key Sites

- ✓ Development of the two key sites to be low-rise and low density
- ✓ Accessibility to be improved

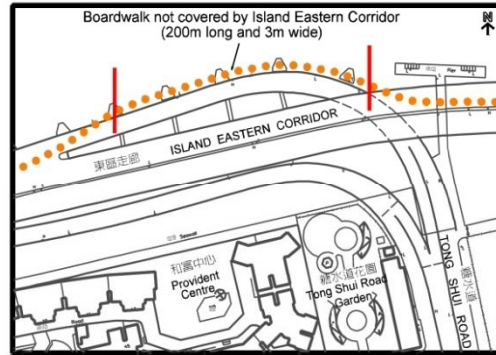
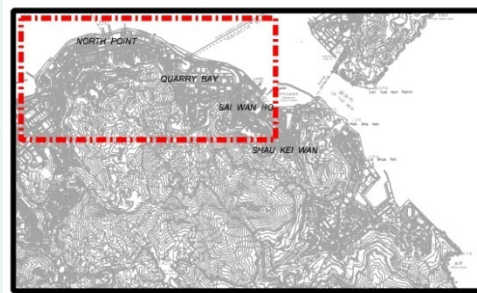
## Implementation

- ✓ Request for early implementation of the enhancement proposals

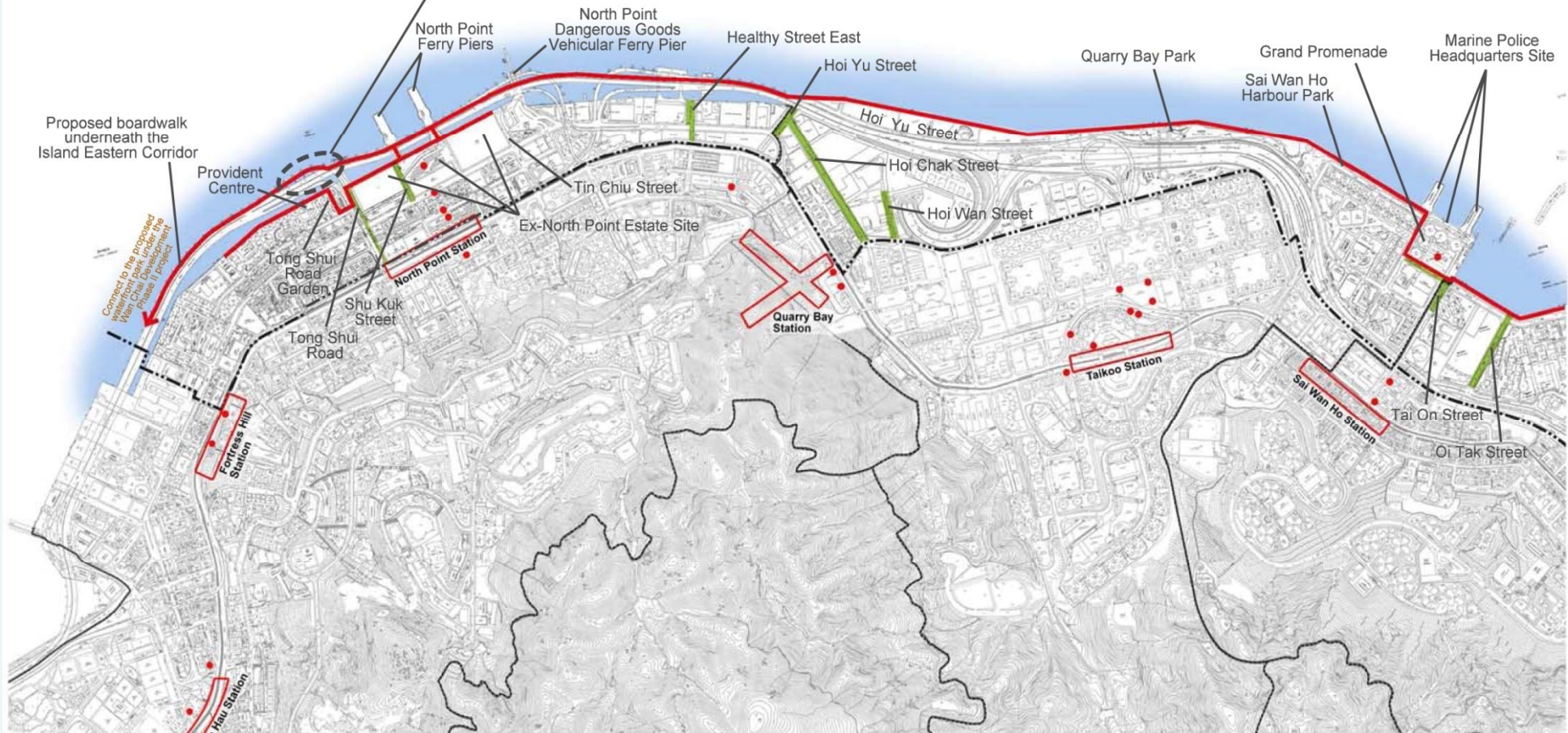
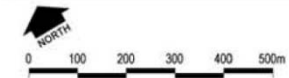
# Waterfront Connectivity and Enhancement Proposals



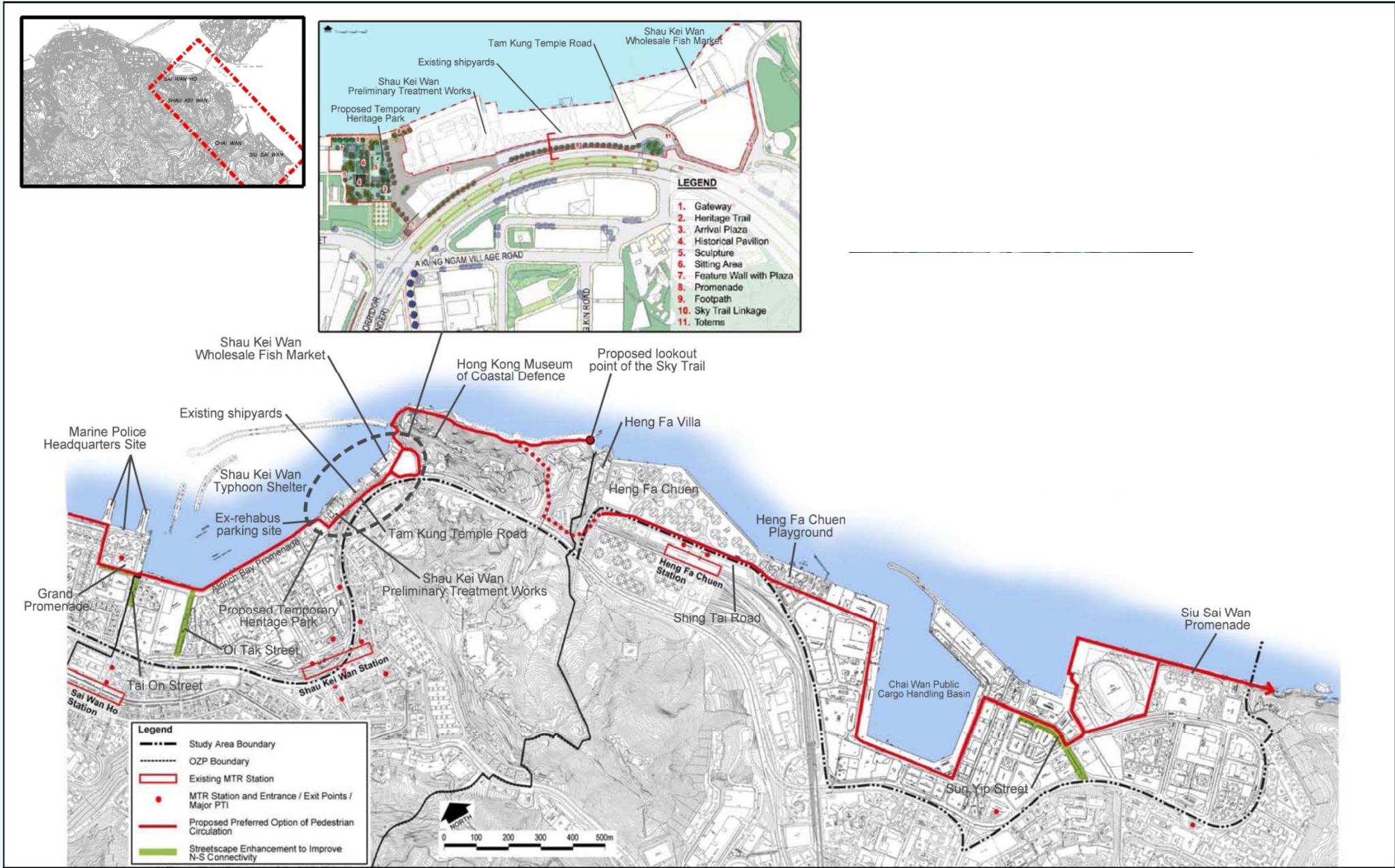
# Waterfront Promenade Proposal / Pedestrian Circulation Network North Point and Quarry Bay



Legend	
	Study Area Boundary
	OZP Boundary
	Existing MTR Station
	MTR Station and Entrance / Exit Points / Major PTI
	Proposed Preferred Option of Pedestrian Circulation
	Streetscape Enhancement to Improve N-S Connectivity



# Waterfront Promenade Proposal / Pedestrian Circulation Network Shau Kei Wan and Chai Wan



# Waterfront Connectivity and Enhancement Proposals

**NORTH POINT**

**QUARRY BAY**

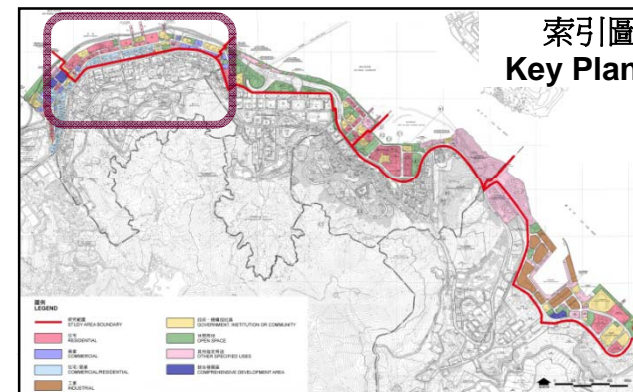
**SHAU KEI WAN**

**CHAI WAN**





# Waterfront Promenade Enhancement Proposal – Boardwalk under the IEC



Proposed 2km-long boardwalk underneath the IEC

Proposed boardwalk near Tong Shui Road



Removing the boundary wall at Provident Centre and Tong Shui Road Garden to connect the waterfront



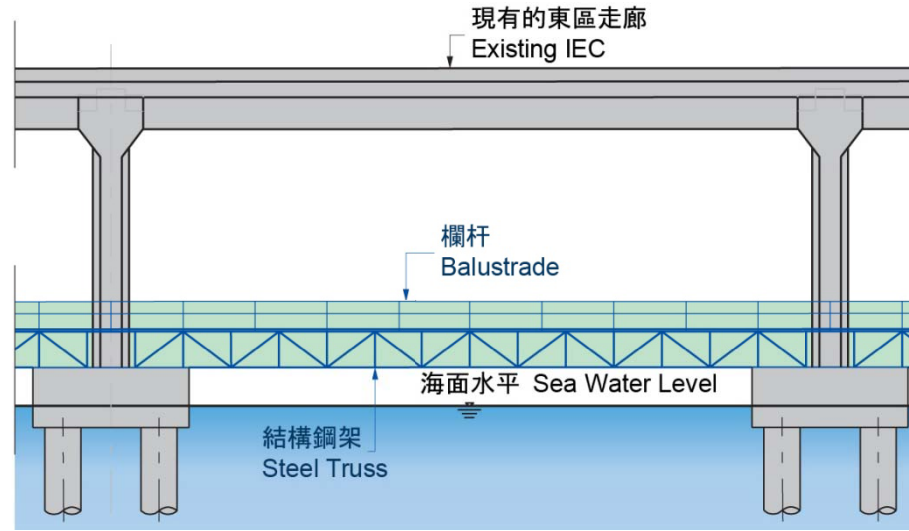
Planned 20-m wide promenade at the ex-North Point Estate Site



# Proposed Boardwalk under IEC: General Design Characteristics



IEC: Existing Conditions



Typical Elevation

	方案一 Option 1	方案二 Option 2
地面 Flooring		
雕塑 Sculptures		
著色處理 Chromatic Treatment		
頂部 Roofscape		
綠化 Greening		



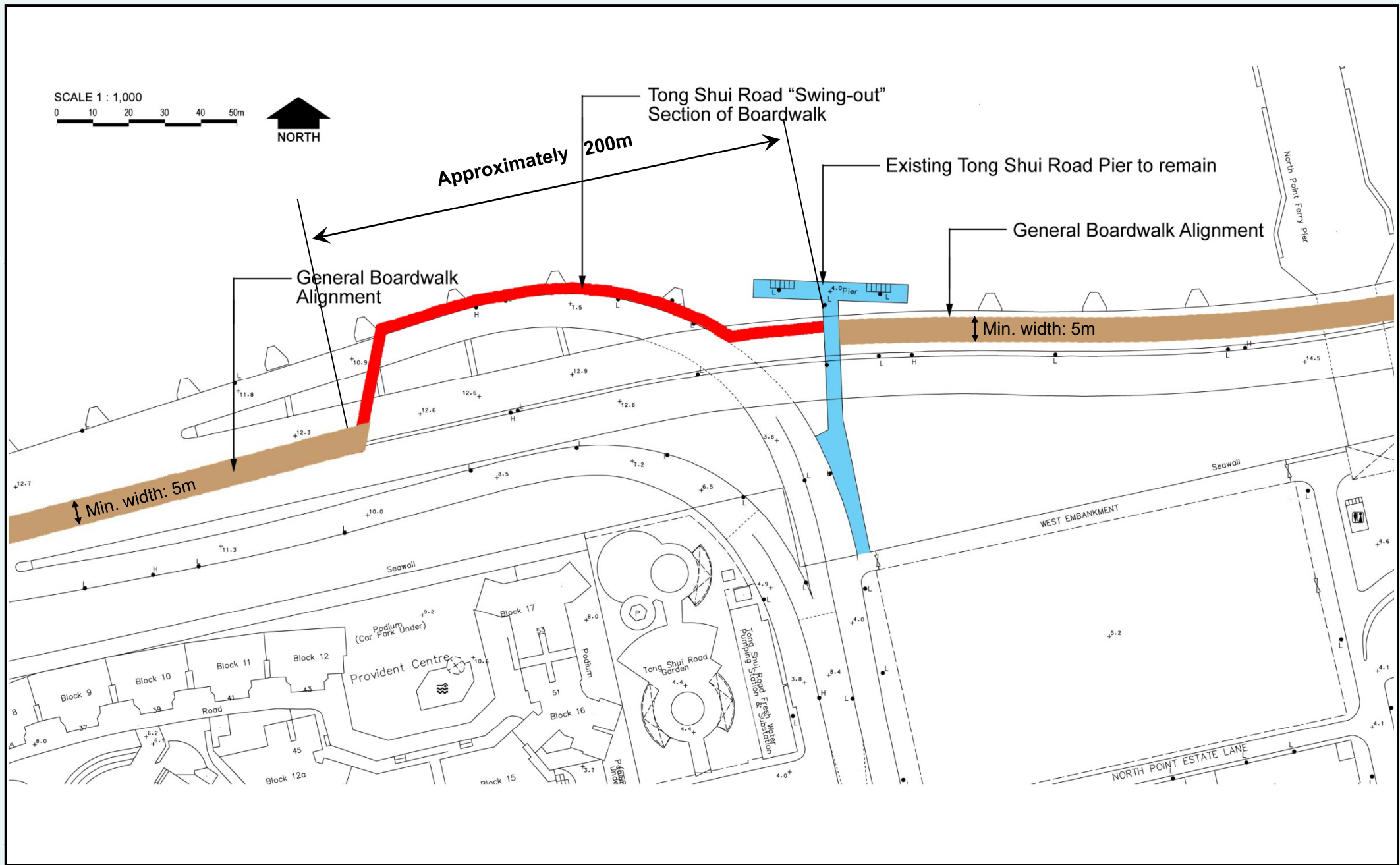
Option 1 (Hard Surface)



Option 2 (Recycled Material)



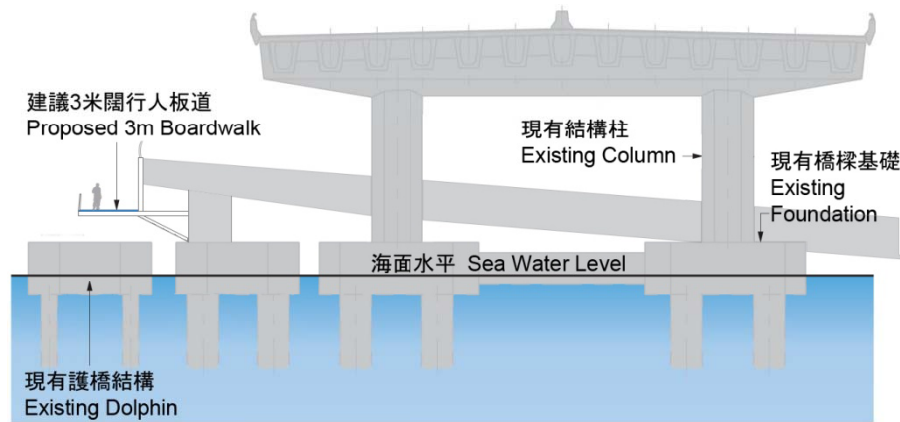
# Detailed IEC Boardwalk Alignment at Tong Shui Road Slip Road



# Proposed Boardwalk under IEC: Design Variation



IEC: Existing Conditions



Special Condition 1: Section

	方案一 Option 1	方案二 Option 2
地面 Flooring		
雕塑 Sculptures		
著色處理 Chromatic Treatment		
頂部 Roofscape		
綠化 Greening		



Option 1 (Hard Surface)



Option 2 (Composite Timber)



# Waterfront Connectivity and Enhancement Proposals

NORTH POINT

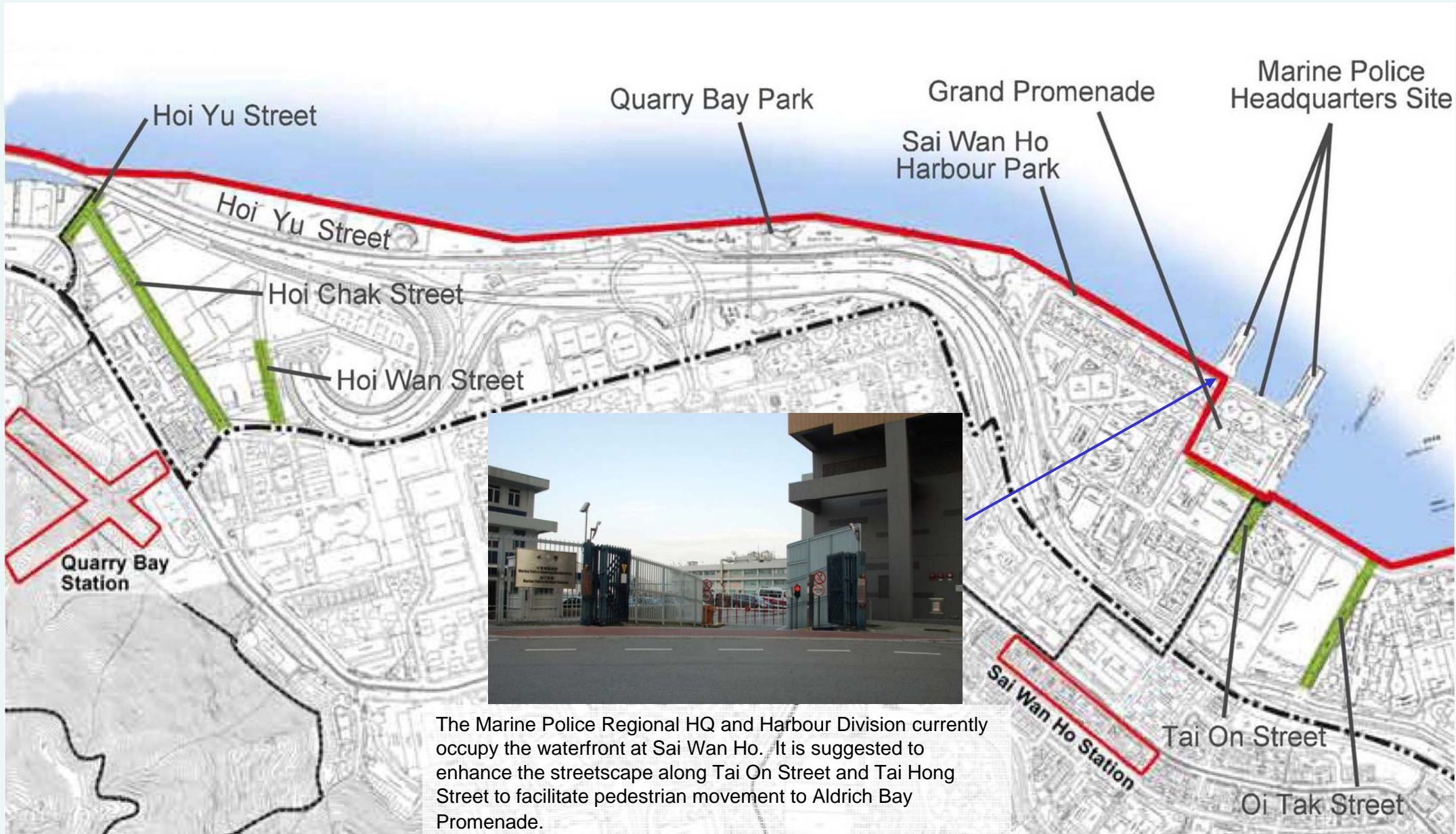
QUARRY BAY

SHAU KEI WAN

CHAI WAN



# Waterfront Promenade Enhancement Proposal – Quarry Bay



# Waterfront Connectivity and Enhancement Proposals

NORTH POINT

QUARRY BAY

SHAU KEI WAN

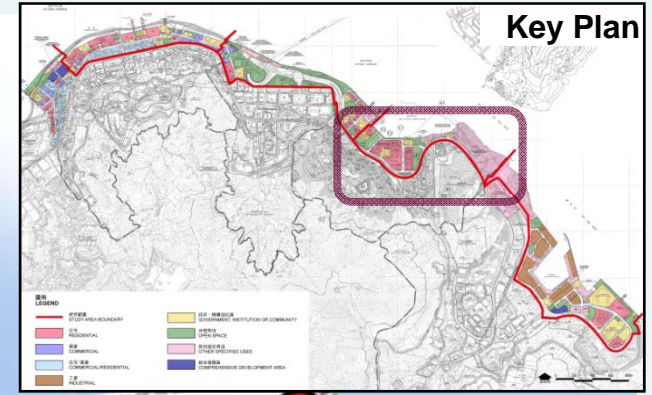
CHAI WAN



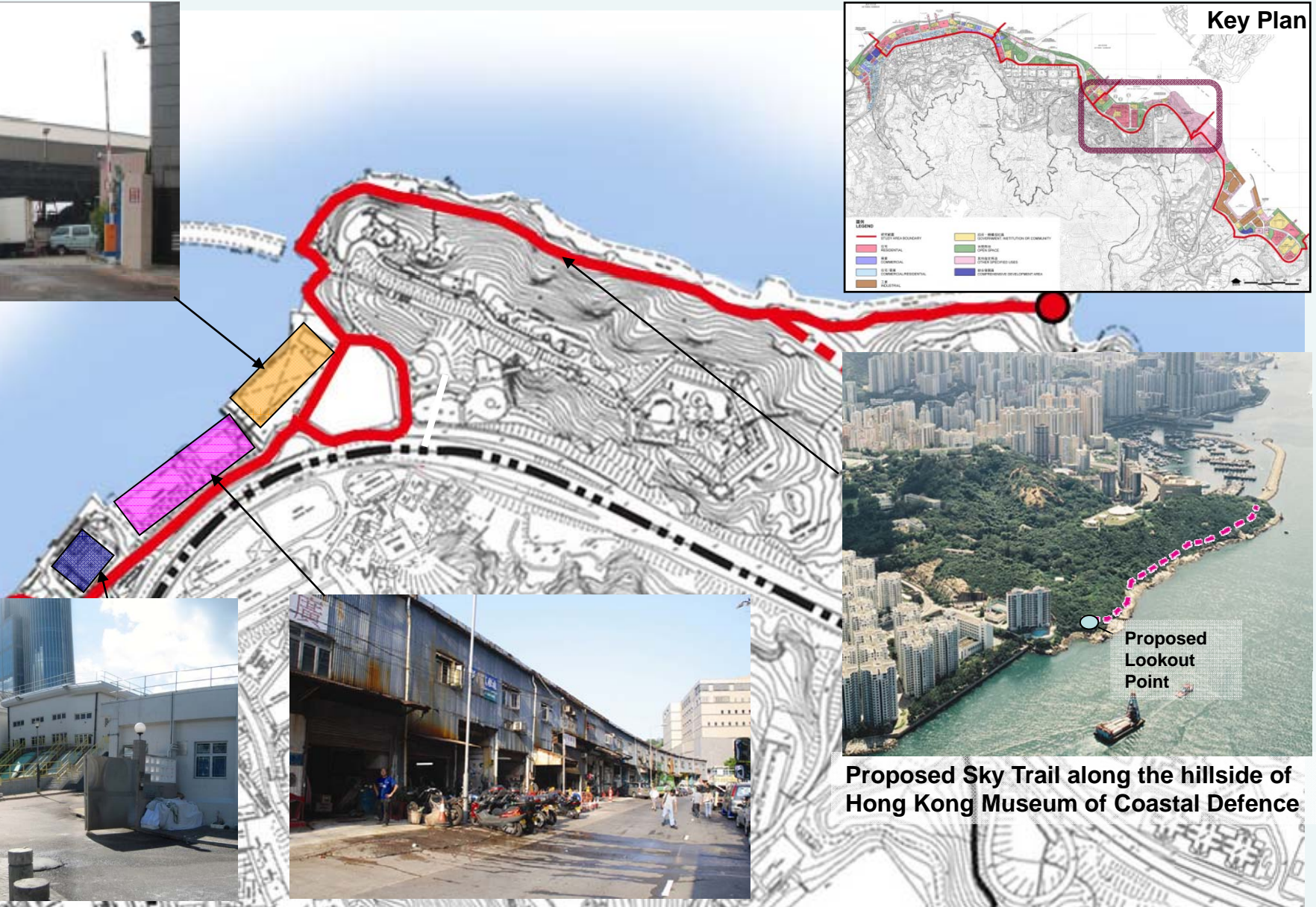
# Waterfront Promenade Enhancement Proposal – Shau Kei Wan



Shau Kei Wan Wholesale Fish Market



Key Plan



Shau Kei Wan Preliminary Treatment Works



Shipyards



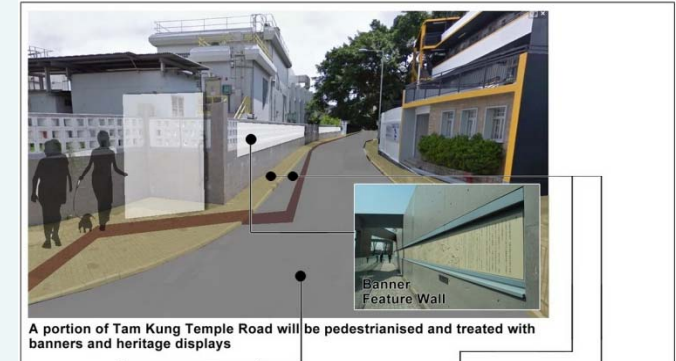
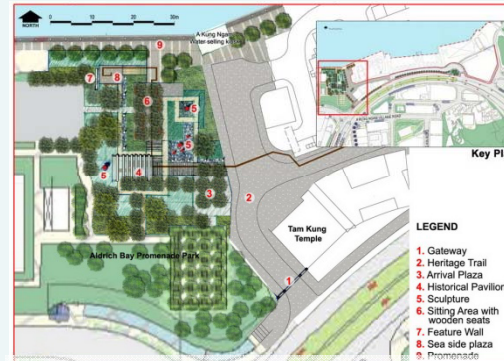
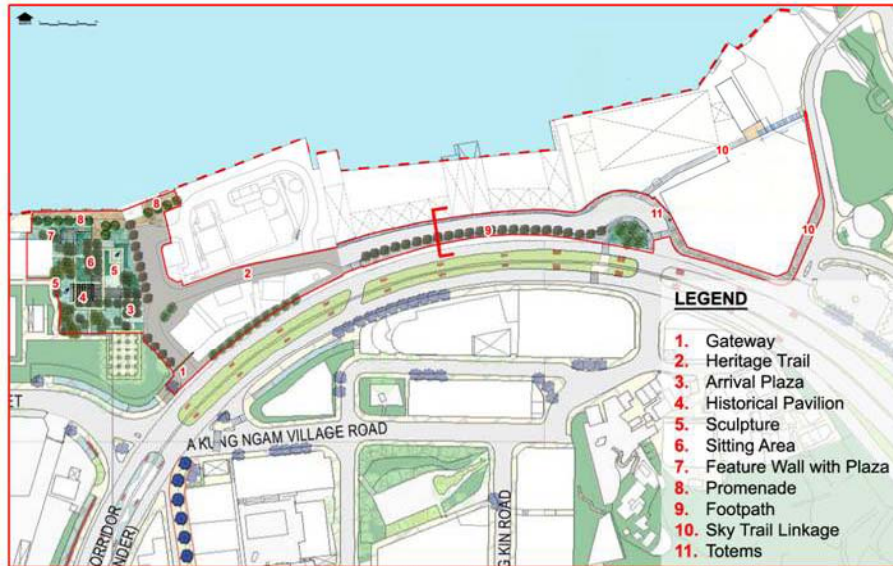
Proposed Lookout Point

Proposed Sky Trail along the hillside of Hong Kong Museum of Coastal Defence

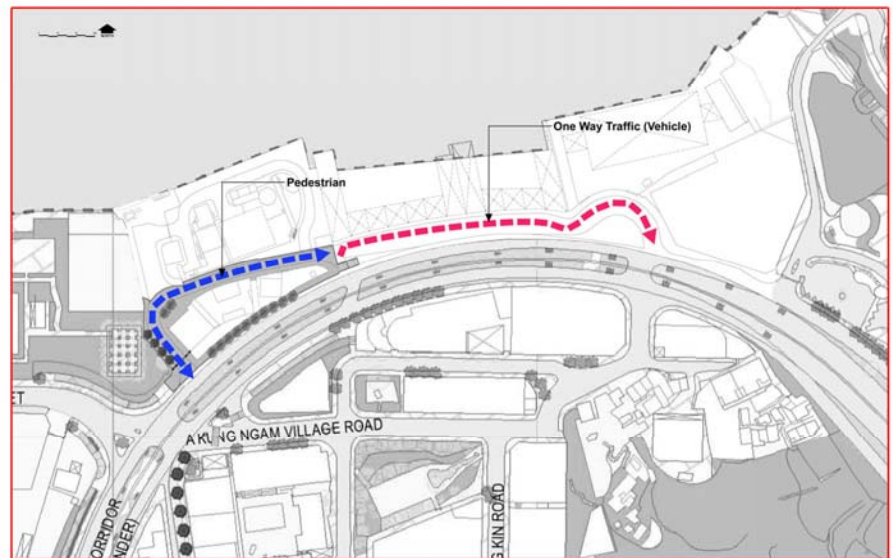




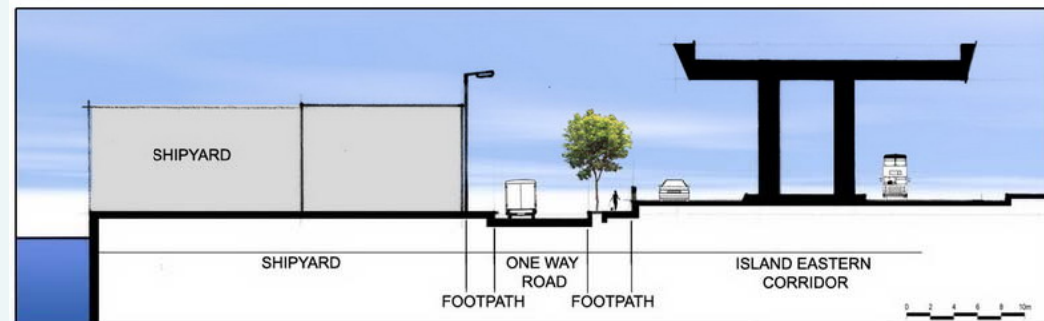
# Waterfront Promenade: Enhancement of Shau Kei Wan Shipyards and Adjacent Waterfront



Phase 1 of the Enhancement in Shau Kei Wan includes the implementation of a pedestrian trail that will be treated and decorated to highlight the cultural heritage element of Shau Kei Wan

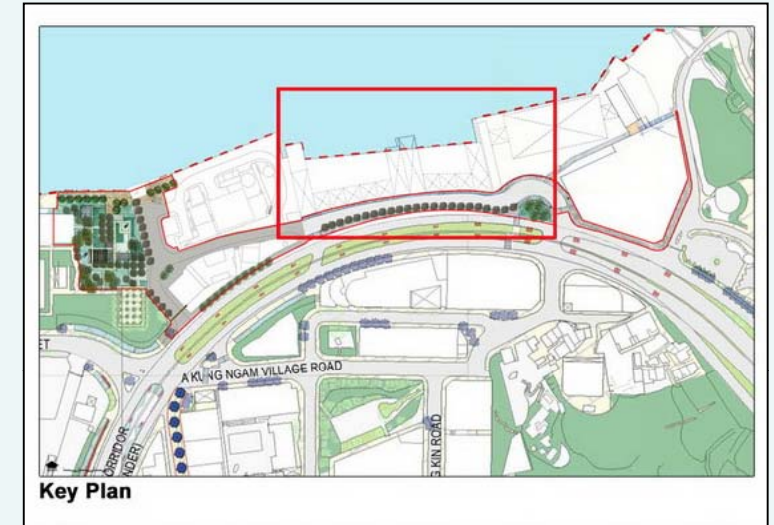


The proposed pedestrian trail will close off the western portion of Tam Kung Temple Road. Traffic will be diverted to the eastern portion.



**Section**

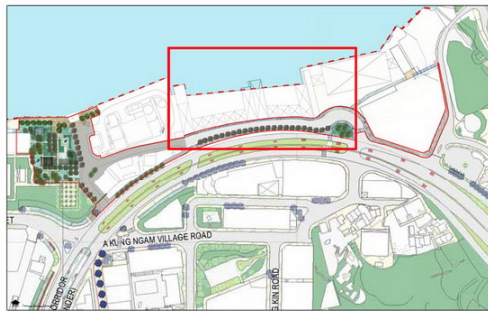
# Existing Condition and Use of Shau Kei Wan Shipyards



## The Shau Kei Wan Shipyards:

Opportunities exist to enhance the building façades, surrounding streetscape, and improvement of the structures

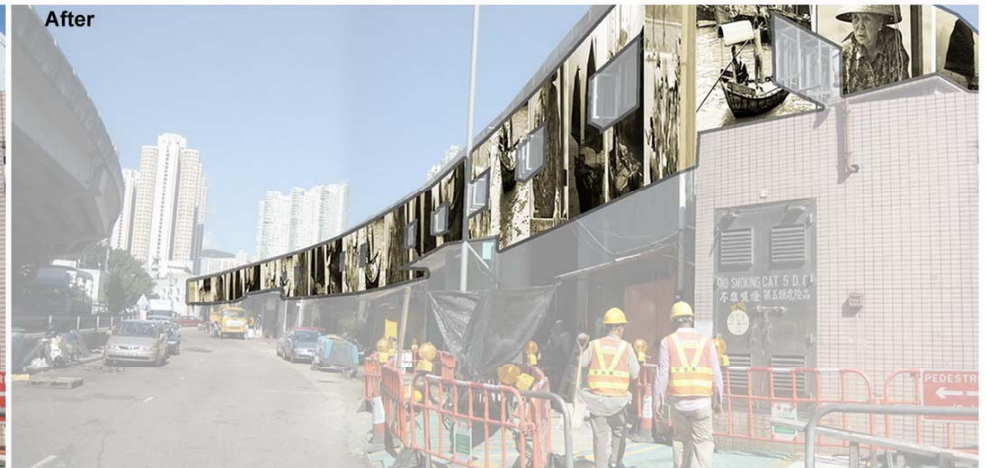
# Proposed Shau Kei Wan Shipyards Possible Façade Treatments



Key Plan

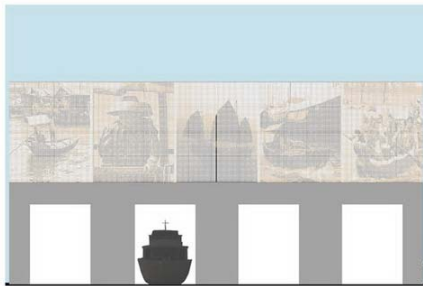


Before

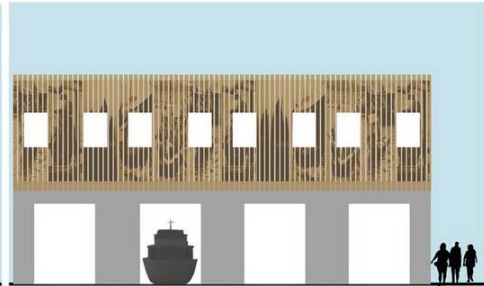


After

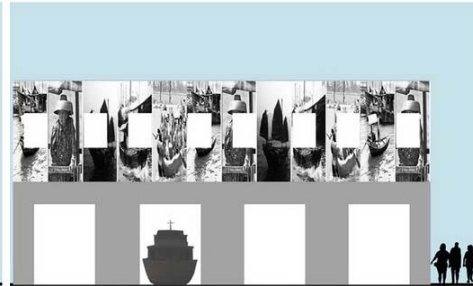
To promote the fishing heritage of the Shau Kei Wan area, the exterior façades of the shipyard can be treated with photographic spray painting that highlights the cultural history of the area



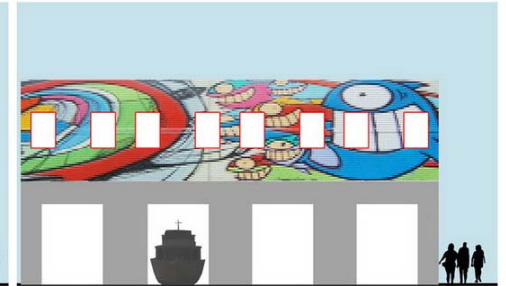
Shipyard Façade Treatment:  
Canvas or Metal Grill with Colour Painted



Shipyard Façade Treatment:  
Metal Sheet with Colour Painted



Shipyard Façade Treatment:  
Colour Painted



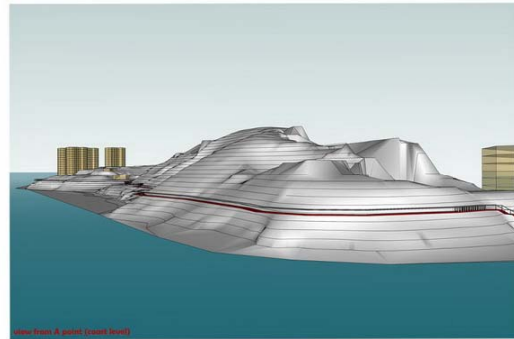
Shipyard Façade Treatment:  
Colour Painted

# Waterfront Connectivity and Enhancement Proposals

## Sky Trail

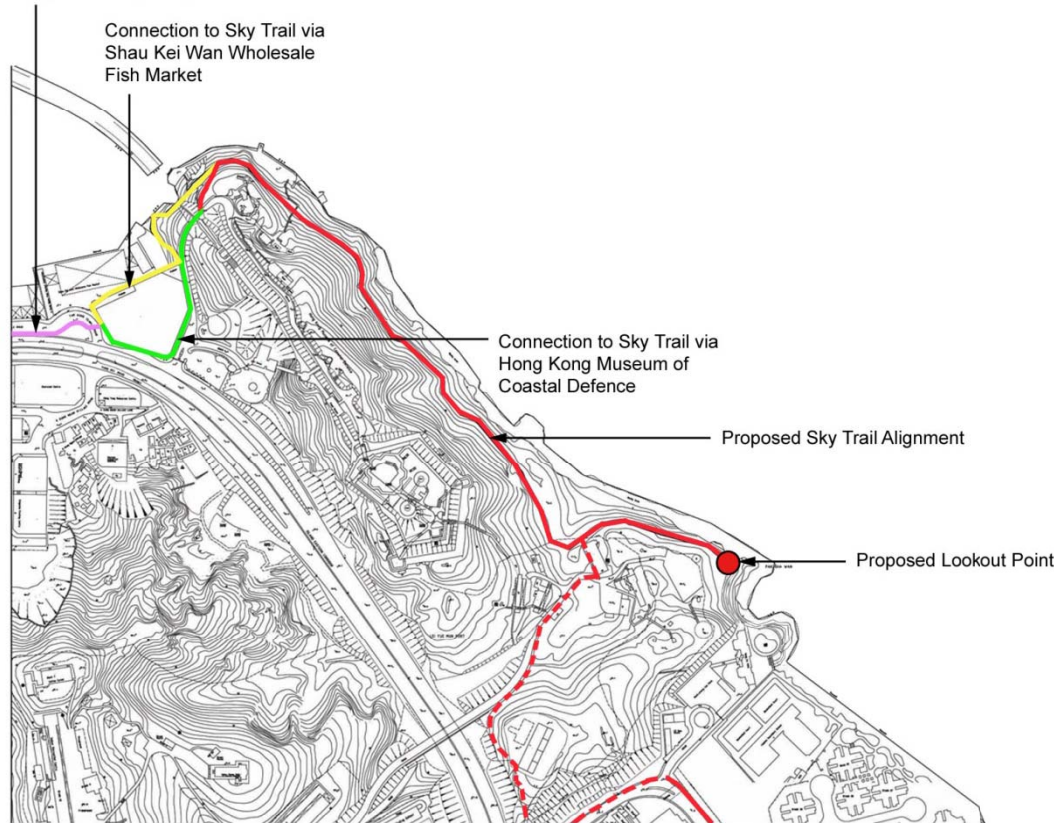


# Waterfront Promenade: Sky Trail through The Hong Kong Museum of Coastal Defence



Possible Elevated Walkway "Sky Trail"

Enhanced Footpath  
along Tam Kung Temple Road



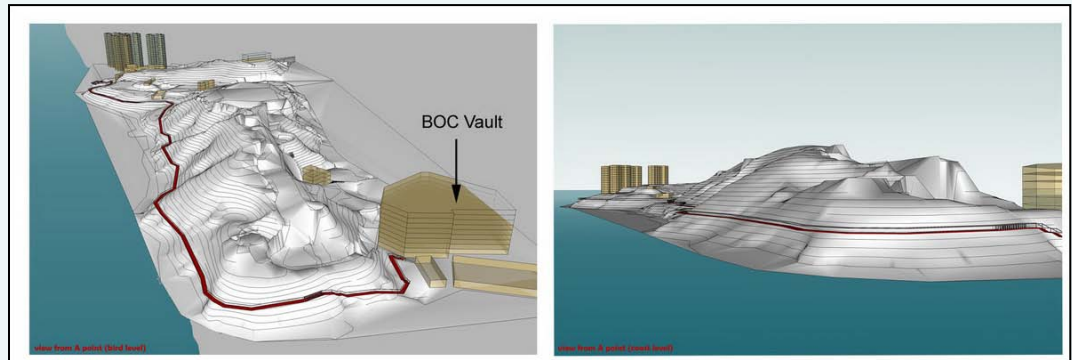
Proposed Skytrail along the hillside of the Hong Kong Museum of Coastal Defence



An Elevated Walkway in the Mid-Level of Wooded Hillside



# Sky Trail through the Hong Kong Museum of Coastal Defence



# Sky Trail through the Hong Kong Museum of Coastal Defence



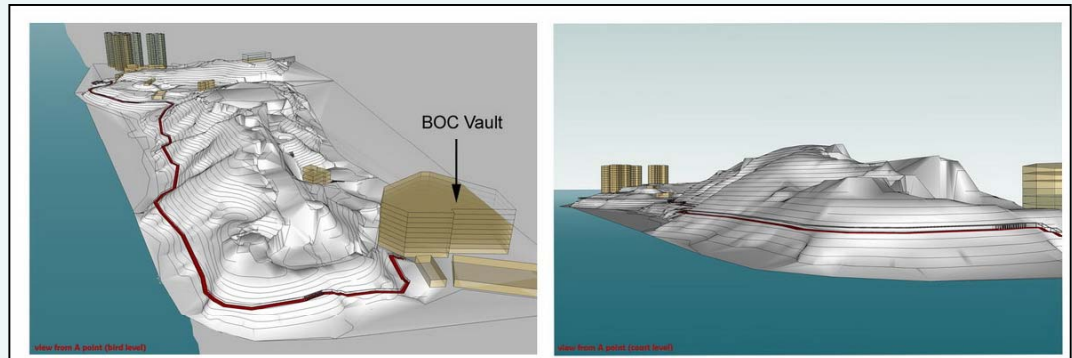
Proposed Skytrail along Coastline of Museum of Coastal Defence site



An Elevated Walkway in the Mid-Level of Wooded Hillside



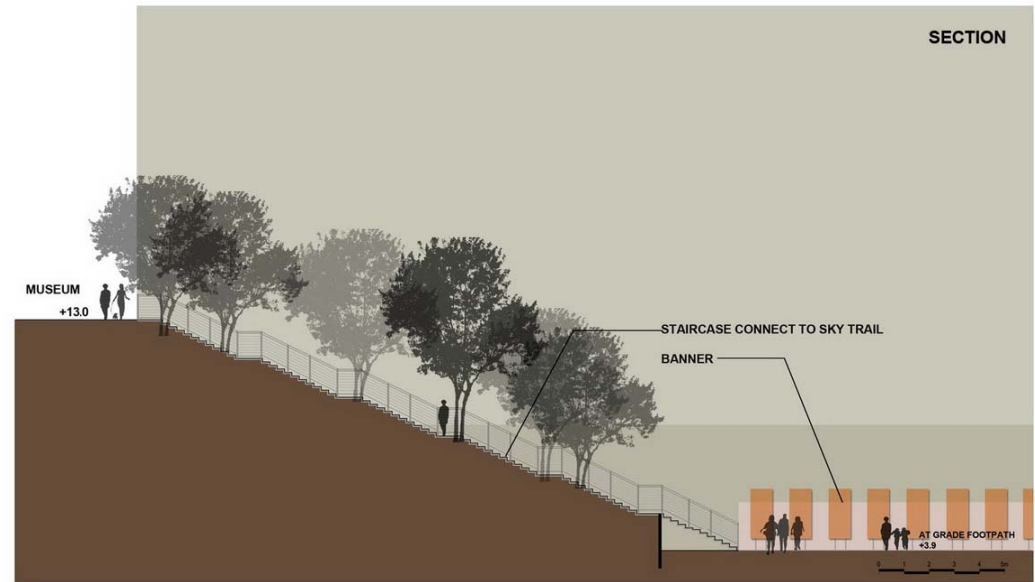
Possible Elevated Walkway "Sky Trail"



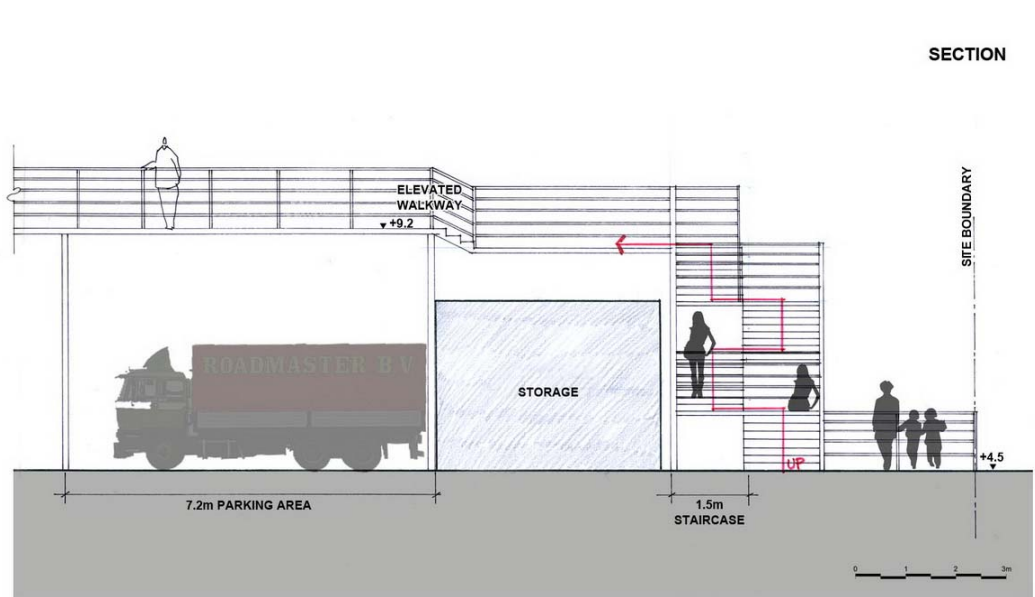
# Connection to the Sky Trail via the Shau Kei Wan Wholesale Fish Market



OPTION 1: AT GRADE FOOTPATH TO SKY TRAIL



OPTION 2: ELEVATED WALKWAY WITH SWITCH BACK STAIRCASE





# Elevated Walkway through the Shau Kei Wan Wholesale Fish Market



Elevated walkway with switch back staircase

To the Sky Trail



# Connection to the Sky Trail via the Hong Kong Museum of Coastal Defence

Connection to Sky Trail via Hong Kong Museum of Coastal Defence

Another option for connection to the Sky Trail is via the Hong Kong Museum of Coastal Defence. Under this option, a footpath is proposed along the edge of the Museum site and adjacent to the Bank of China office building. The footpath will subsequently lead up to the hillside to the Sky Trail structure where additional pedestrian circulation control measures will be located.

Operable Pedestrian Gate to the Museum

SKY TRAIL

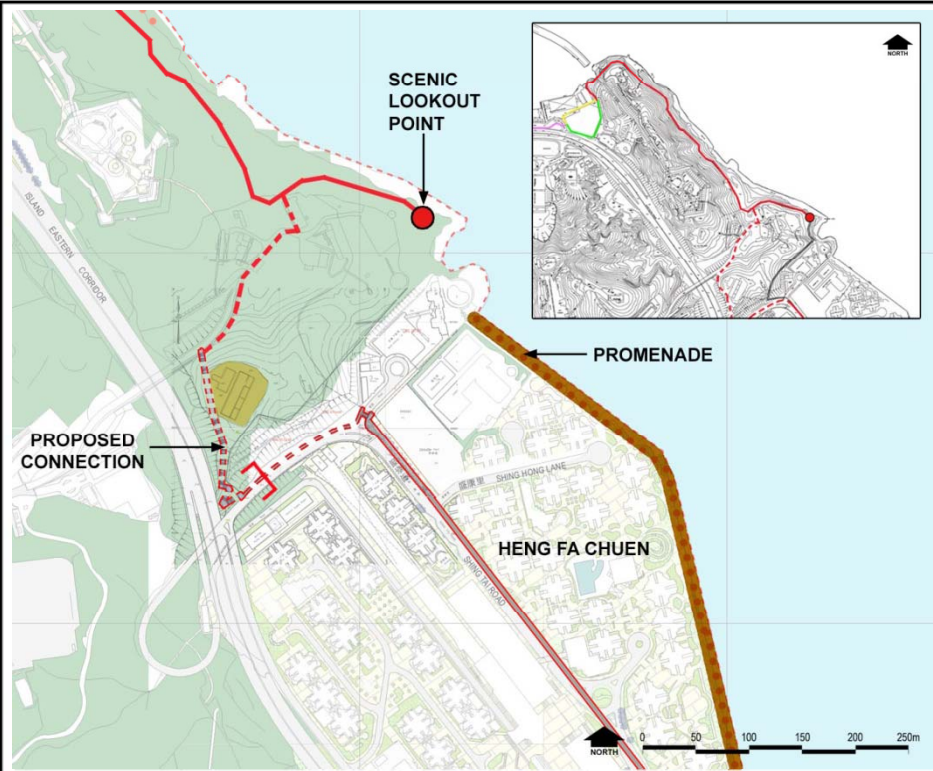
Photomontage



# The Sky Trail Eastern Landing



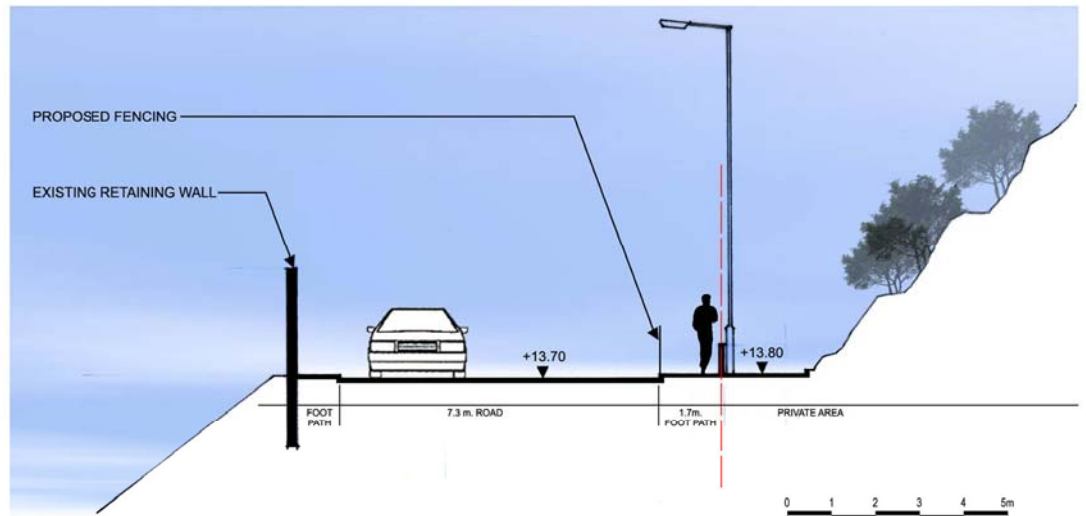
# Possible Sky Trail Eastern Landing



Existing Photos



Proposed staircase at the eastern side of the Shau Kei Wan hillside, the connection will follow Shing Tai Road and continue to Chai Wan.



Cross section of pedestrian connection at Shing Tai Road. A footpath of 1.7m wide will be provided with railings to separate pedestrians from vehicular traffic.

# Possible Signage Strategy for Place-making and Way Finding

## Information Signage

Usually located at a principal gateway to a District/Neighbourhood, Information Signage is generally large format signage that informs visitors of the attractions within the area and the means by which they can be accessed. This level of signage is the principal tier of a typical signage strategy that is at the route of promoting a destination.



Way-finding information and address post Information panels



Directional and event information board at the gateways of subdistricts



Multi dimensional post

Street furniture with way-finding information

## Directional Signage

Consists of a second tier of signage that directs visitors to a destination that they have identified from information signage. The spacing is sufficient to ensure that visitors do not lose their way and are provided with a sense of security. The form of signage can take various forms but needs to be sufficiently perceptible to be user friendly.



Granite paving provides way-finding information



Information panels with directional signs



Granite paving, integrating back-lit illuminated panels provides way-finding information



Granite paving and lighting indicating directional and way-finding information



Brass plaque 'milestones' at regular intervals provide directional reassurance

## Destination Signage

Comprises signage that announces arrival at a destination/attraction and provides information on what is to be observed or experienced enhancing the visitors' sense of arrival. Again the form of signage can be varied albeit that a signage language should ideally be developed for an area that is seeking to define an identity.



Park Entrance



Vertical Sign or Totem



Gallery Entrance post



Aluminium post



Back-lit glass post

# Waterfront Connectivity and Enhancement Proposals

NORTH POINT

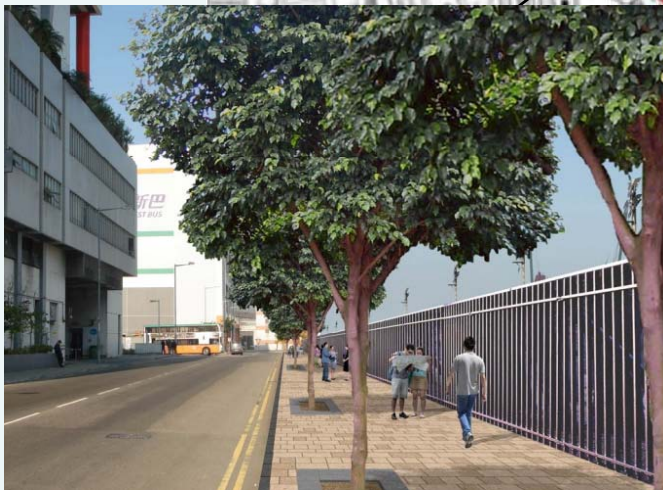
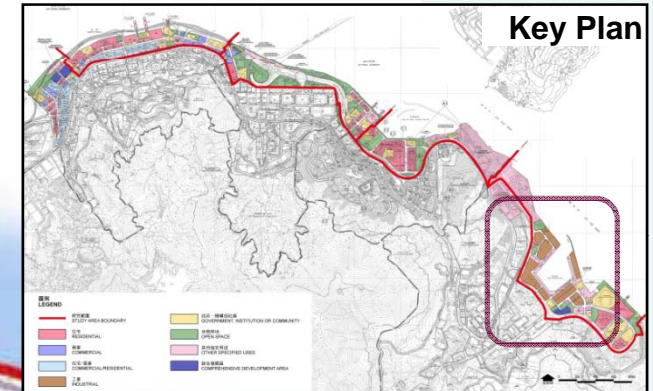
QUARRY BAY

SHAU KEI WAN

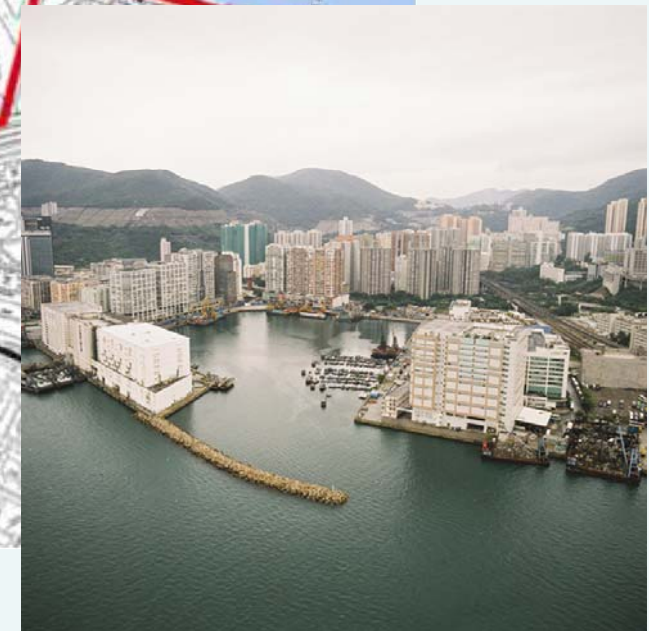
CHAI WAN



# Waterfront Promenade Enhancement Proposal – Chai Wan



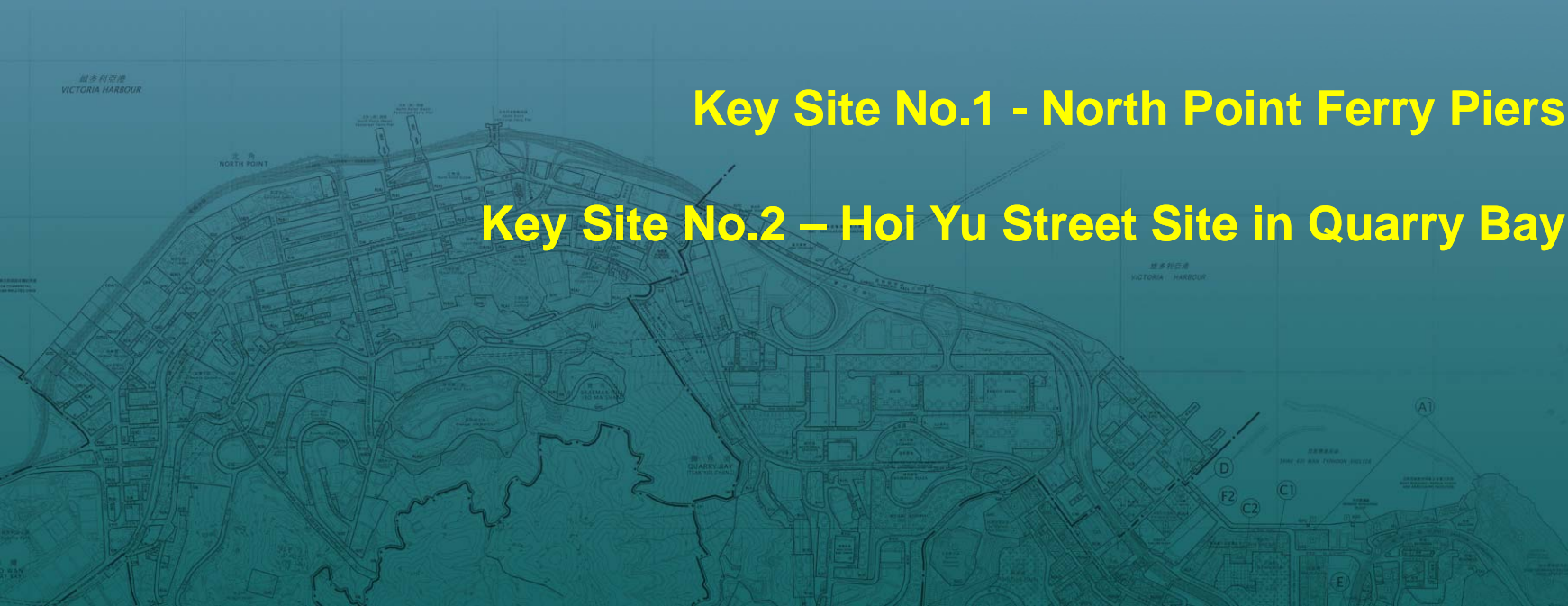
Possible Footpath with Streetscape Enhancement alongside the Chai Wan PCWA



# Key Sites Development Proposals

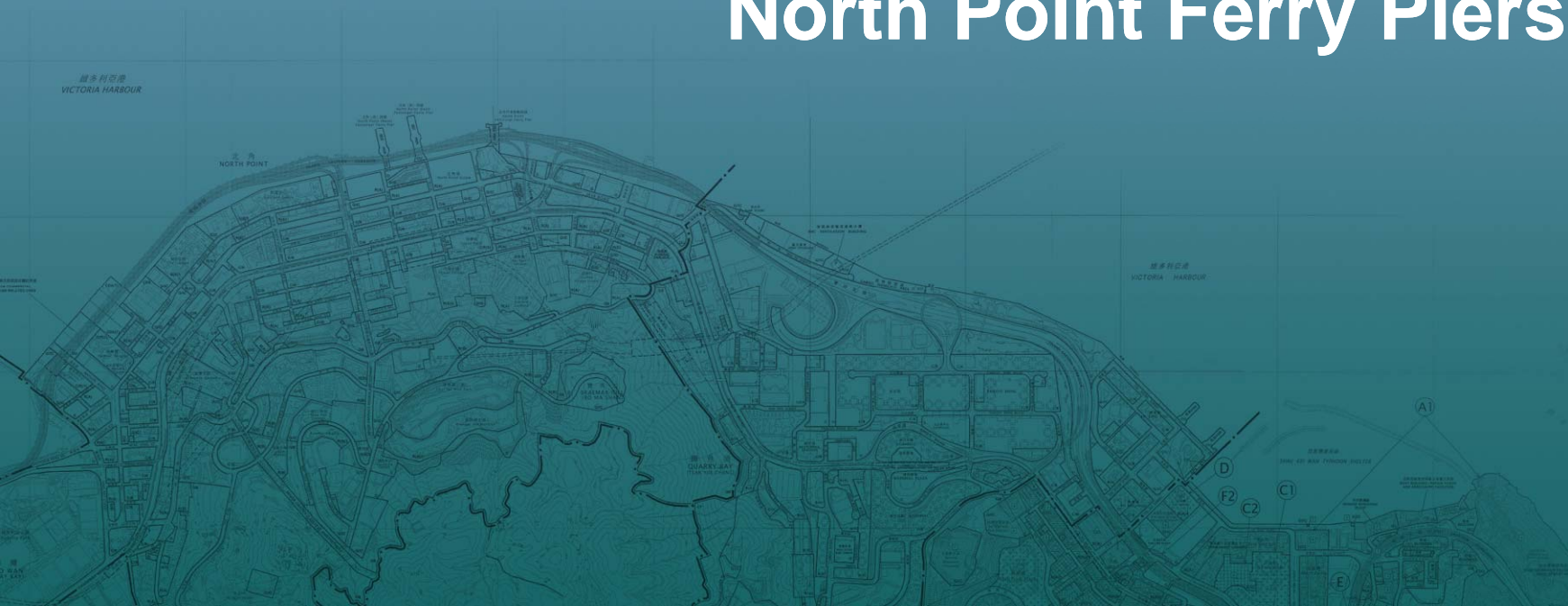
**Key Site No.1 - North Point Ferry Piers**

**Key Site No.2 – Hoi Yu Street Site in Quarry Bay**





# Key Site No.1 North Point Ferry Piers



# Key Site No. 1: North Point Passenger Ferry Pier and Promenade – Proposed Preferred Option

KEY SITE No. 1: NORTH POINT PASSENGER FERRY PIERS AND PROMENADE - PROPOSED PREFERRED OPTION



Indicative Plan



Aerial view of the renovated pier structures with the proposed Boardwalk under the IEC

**Design Objective:**  
**Vibrant Entertainment Waterfront**  
**Legend**

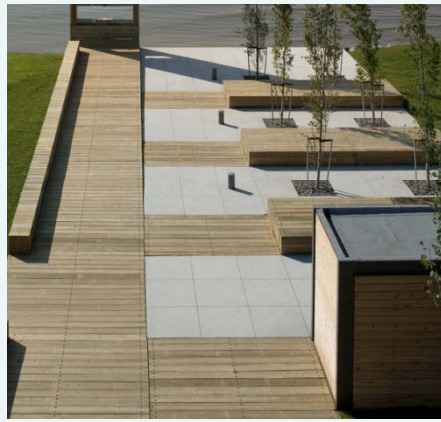
- 1** Civic Plaza
- 2** Information kiosk at the Promenade
- 3** Tensile Shelter
- 4** Proposed Boardwalk for Improved Waterfront Accessibility
- 5** Extension of Boardwalk through the Pier Structures
- 6** Retail Kiosks on The Boardwalk
- 7** Rooftop Cafés and Landscape Areas Accessible to the Public
- 8** Viewing Deck
- 9** Cover Walkway
- 20m Waterfront Promenade

# Key Site No. 1: North Point Passenger Ferry Pier Approach and Promenade



Possible animated activity deck with additional array of diversified uses, extended from the adaptively renovated North Point Passenger Ferry Pier structures.

# Waterfront Promenade Treatments: North Point Ferry Piers Promenade

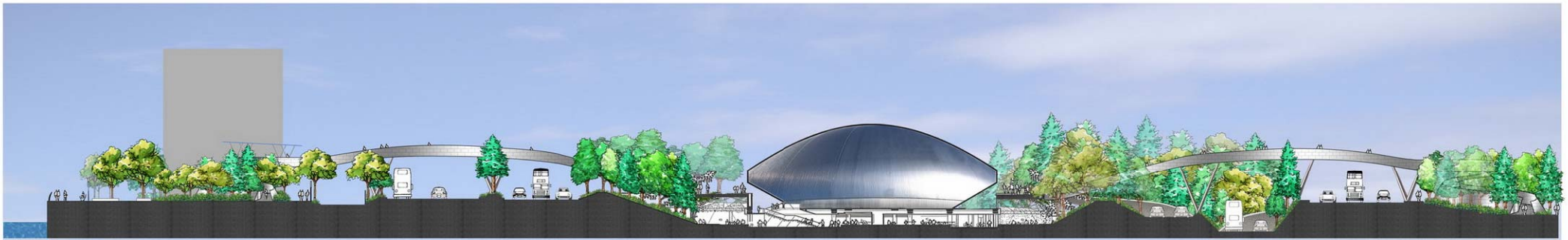


# Key Site No.2

## Hoi Yu Street Site in Quarry Bay



# Key Site No. 2: Hoi Yu Street Site – Proposed Preferred Option



Harbour | Proposed tourism and entertainment facilities and open space along Hoi Yu Street site | The IEC | Proposed IMAX or performance centre at the EHC Portal with iconic bridge to improve accessibility to the harbour-front | Multiple slip roads to the IEC | Connection to Quarry Bay Park



# Key Site No. 2: Hoi Yu Street Site – Proposed Preferred Option

**PROPOSED PREFERRED OPTION: THEME – TOURISM AND ENTERTAINMENT THEMED WATERFRONT WITH ICONIC FOOTBRIDGE**



EXISTING



PROPOSAL



EXISTING



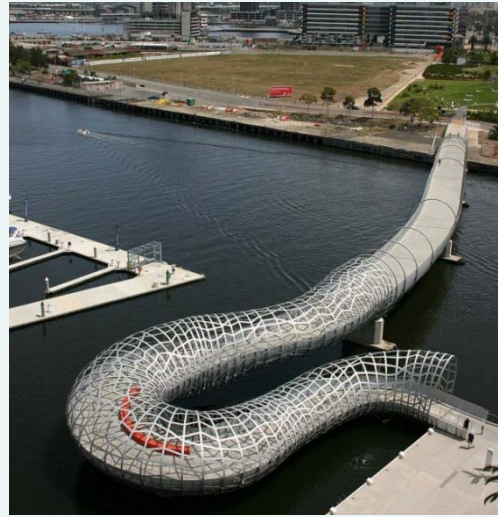
PROPOSAL



# Feature Bridge Link: Imagination the Only Limitation



**Greenside Place Link Bridge,  
Edinburgh, UK**



**Webb Bridge, Melbourne**



**Marina Bay Footbridges, Singapore**



**Henderson Waves Footbridge,  
Singapore**



**Spencer Street Footbridge,  
Melbourne, Australia**



**Heart of Love River Footbridges, Kaohsiung, Taiwan**





# Streetscape Enhancement



# Standardised Landscape Palette



資料及地標性標誌牌  
Information and  
Destination Signage

改善行人鋪地  
Improved Paving

街道傢具  
Street  
Furniture

植樹種植池  
Tree Planter

行人路燈及懸垂花籃  
Pedestrian Lights with  
Hanging Baskets

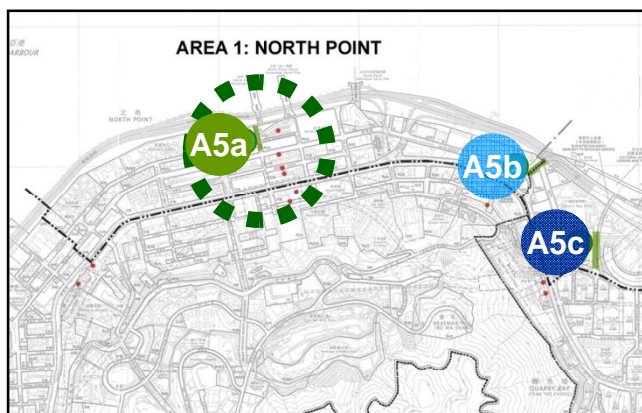
改裝後「地面商舖」  
Converting Ground  
Floor with Retails

改善後的馬路鋪地  
Improved Crossing  
Treatment

# North Point: Streetscape Enhancement - Shu Kuk Street

A5a

書局街  
Shu Kuk Street

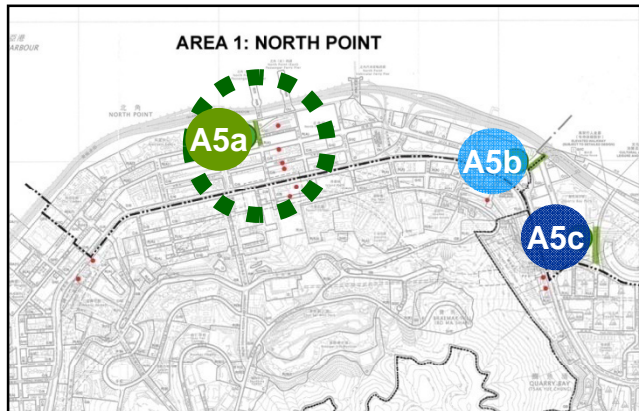


索引圖  
Key Plan

# North Point: Streetscape Enhancement - Shu Kuk Street

A5a

書局街  
Shu Kuk Street



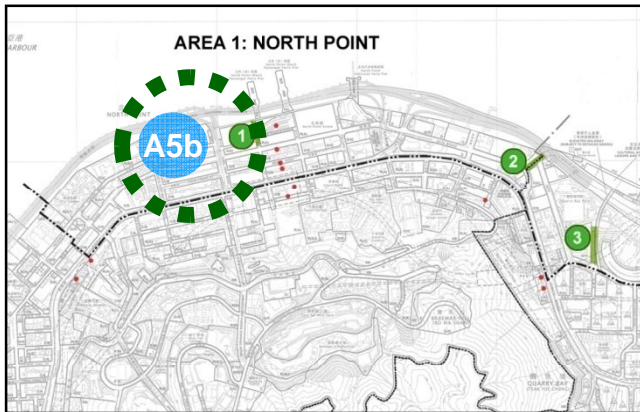
索引圖  
Key Plan



建議優化方案  
Proposed Enhancement

# North Point: Streetscape Enhancement – Tong Shui Road

## A5b 糖水道 Tong Shui Road



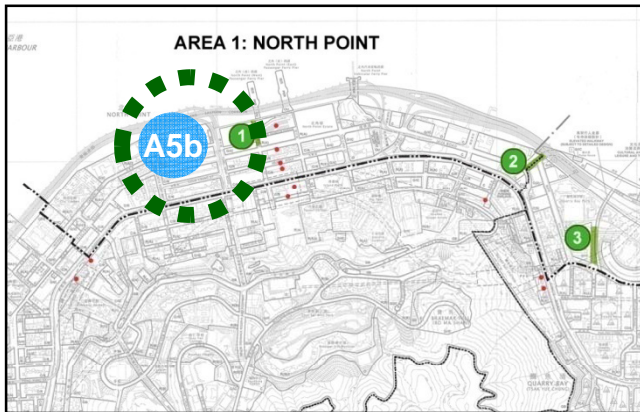
索引圖  
Key Plan



糖水道現狀 Existing (Tong Shui Road)

# North Point: Streetscape Enhancement – Tong Shui Road

## A5b 糖水道 Tong Shui Road



索引圖  
Key Plan



建議優化方案 Proposed Enhancement

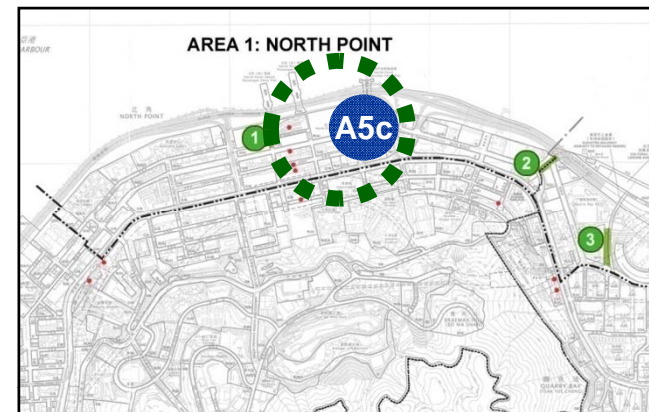
# North Point: Streetscape Enhancement – Healthy Street East

A5c

健康東街  
Healthy Street East



新業街現狀  
Existing (Healthy Street East)

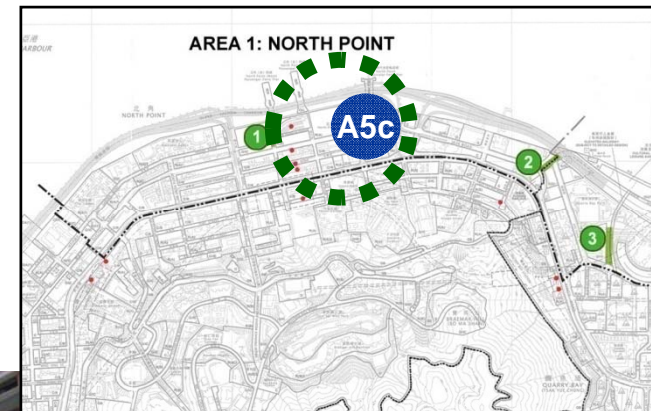


索引圖  
Key Plan

# North Point: Streetscape Enhancement – Healthy Street East

A5c

健康東街  
Healthy Street East



索引圖  
Key Plan



建議優化方案  
Proposed Enhancement



Hong Kong Island East Harbour-front Study - Feasibility Study

Agreement No. CE 61/2008 (TP)

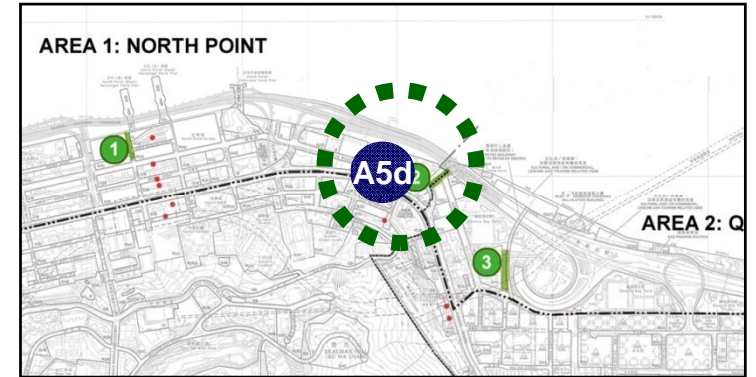


Supported by  
AECOM



# Quarry Bay: Streetscape Enhancement – Hoi Yu Street

**A5d** 海裕街  
Hoi Yu Street



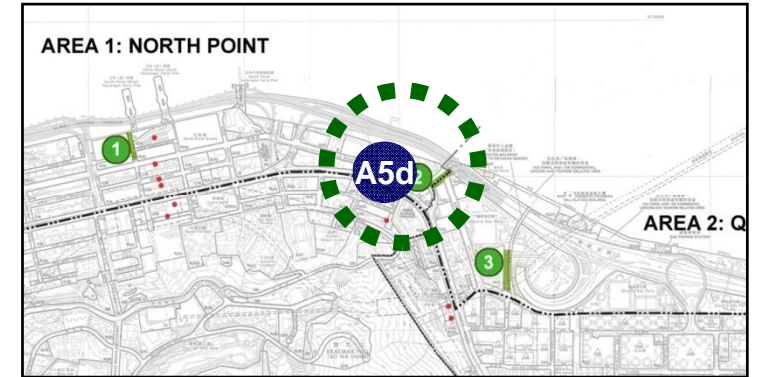
索引圖  
Key Plan



海裕街現狀  
Existing (Hoi Yu Street)

# Quarry Bay: Streetscape Enhancement – Hoi Yu Street

A5d 海裕街  
Hoi Yu Street



索引圖  
Key Plan

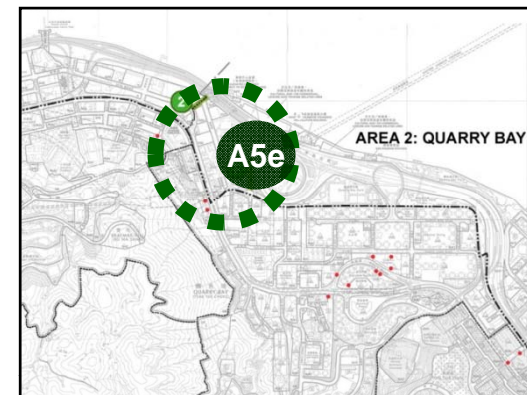


建議優化方案  
Proposed Enhancement

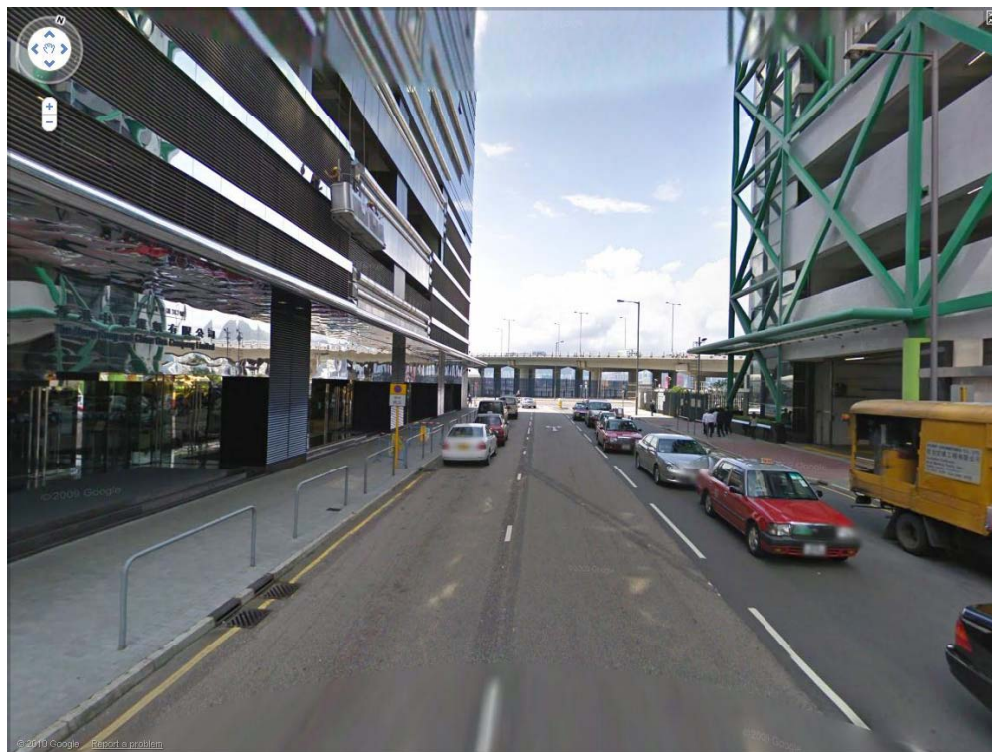


# Quarry Bay: Streetscape Enhancement – Hoi Chak Street

**A5e** 海澤街  
**Hoi Chak Street**



索引圖  
Key Plan



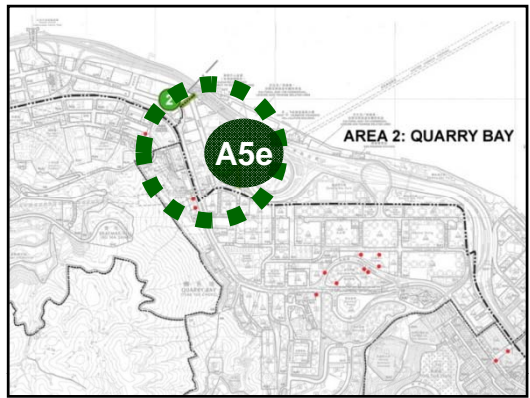
海澤街現狀  
Existing (Hoi Chak Street)

# Quarry Bay: Streetscape Enhancement – Hoi Chak Street

A5e 海澤街  
Hoi Chak Street



建議優化方案  
Proposed Enhancement

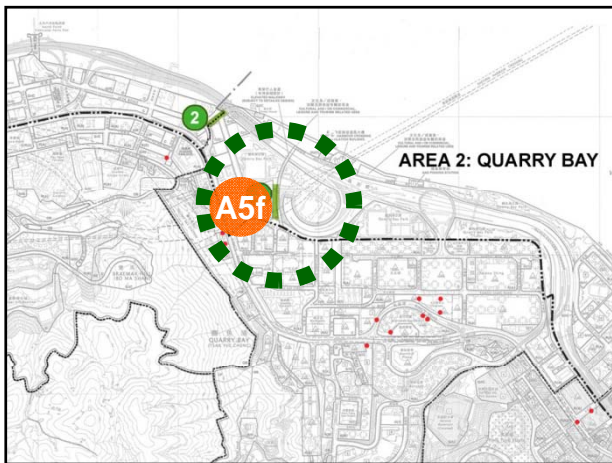


索引圖  
Key Plan



# Quarry Bay: Streetscape Enhancement – Hoi Wan Street

**A5f** 海灣街  
**Hoi Wan Street**



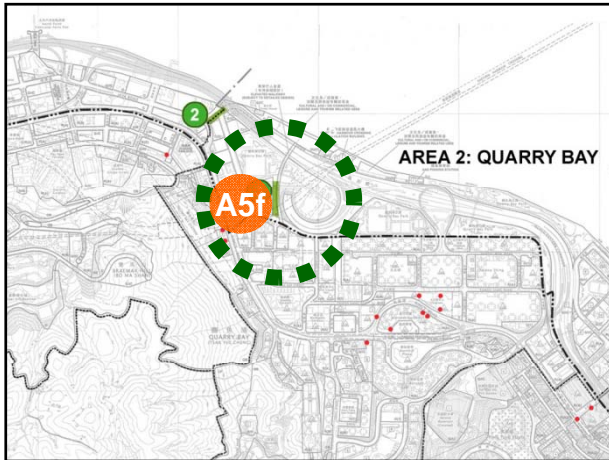
索引圖  
Key Plan



海灣街現狀  
Existing (Hoi Wan Street)

# Quarry Bay: Streetscape Enhancement – Hoi Wan Street

A5f 海灣街  
Hoi Wan Street



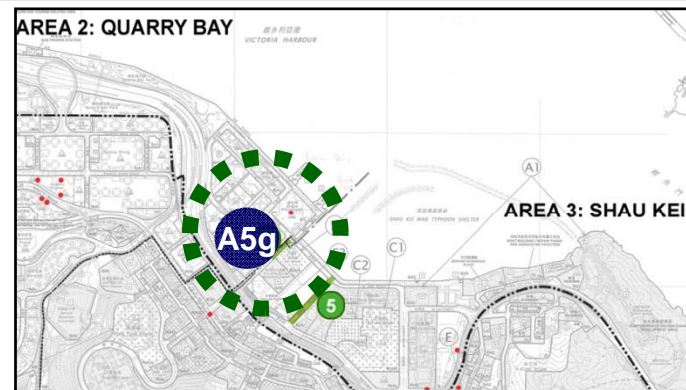
索引圖  
Key Plan



建議優化方案  
Proposed Enhancement.

# Shau Kei Wan: Streetscape Enhancement – Tai On Street

**A5g** 太安街  
Tai On Street



索引圖  
Key Plan

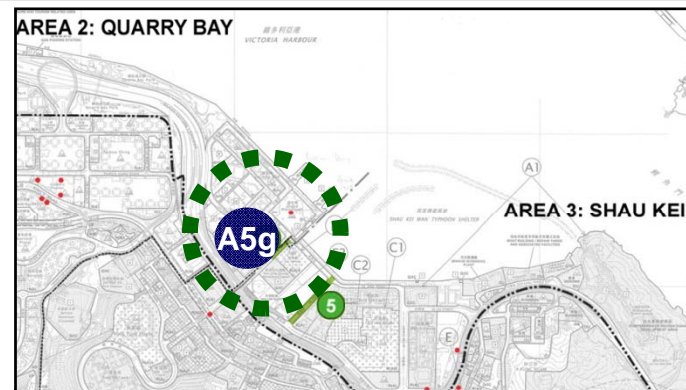


太安街現狀  
Existing (Tai On Street)



# Shau Kei Wan: Streetscape Enhancement – Tai On Street

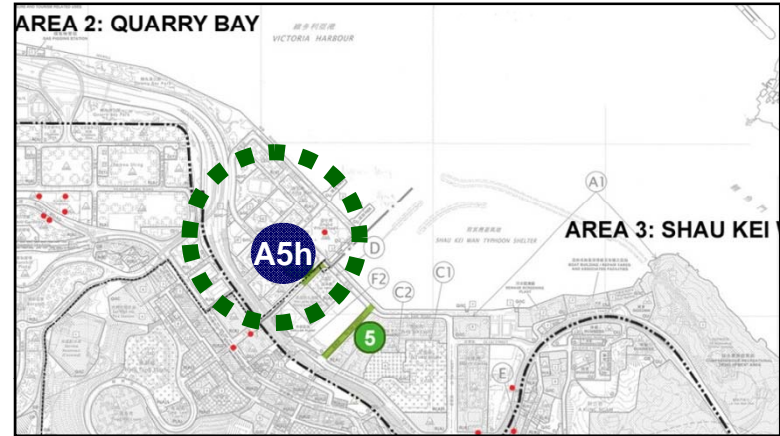
**A5g** 太安街  
Tai On Street





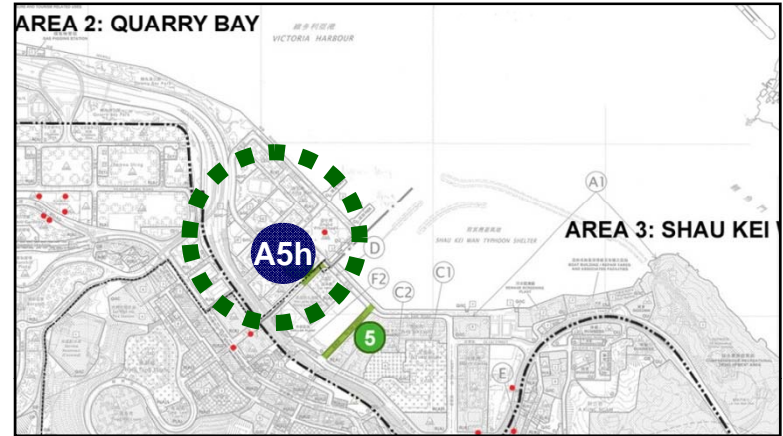
# Shau Kei Wan: Streetscape Enhancement – Oi Tak Street

A5h  
愛德街  
Oi Tak Street



# Shau Kei Wan: Streetscape Enhancement – Oi Tak Street

A5h  
愛德街  
Oi Tak Street



索引圖  
Key Plan

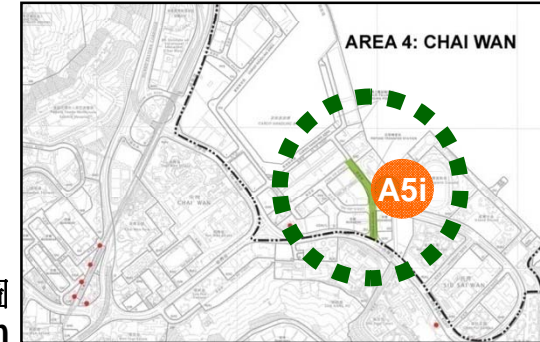


建議優化方案  
Proposed Enhancement

# Chai Wan: Streetscape Enhancement – Sun Yip Street



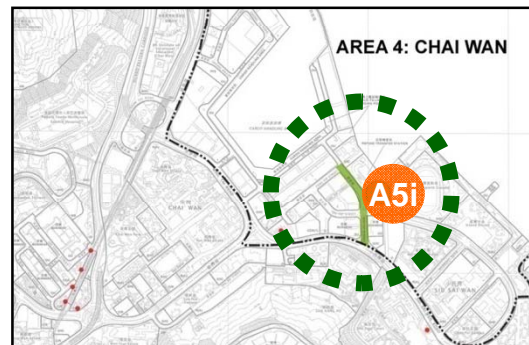
索引圖  
Key Plan



新業街現狀  
Existing (Sun Yip Street)

# Chai Wan: Streetscape Enhancement – Sun Yip Street

A5i 新業街  
Sun Yip Street



索引圖  
Key Plan



建議優化方案  
Proposed Enhancement

# Provisions for Recreational Cycling



# Harbour-front Continuity, Accessibility & Informal Cycling Facilities along Promenade



Existing at the North Point Ferry Pier Waterfront

# Harbour-front Continuity, Accessibility & Informal Cycling Facilities along Promenade



Proposed Enhancement of **North Point Ferry Pier Promenade** with Provisions for Recreational Cycling

# Harbour-front Continuity, Accessibility & Informal Cycling Facilities along Promenade



Existing



# Harbour-front Continuity, Accessibility & Informal Cycling Facilities along Promenade

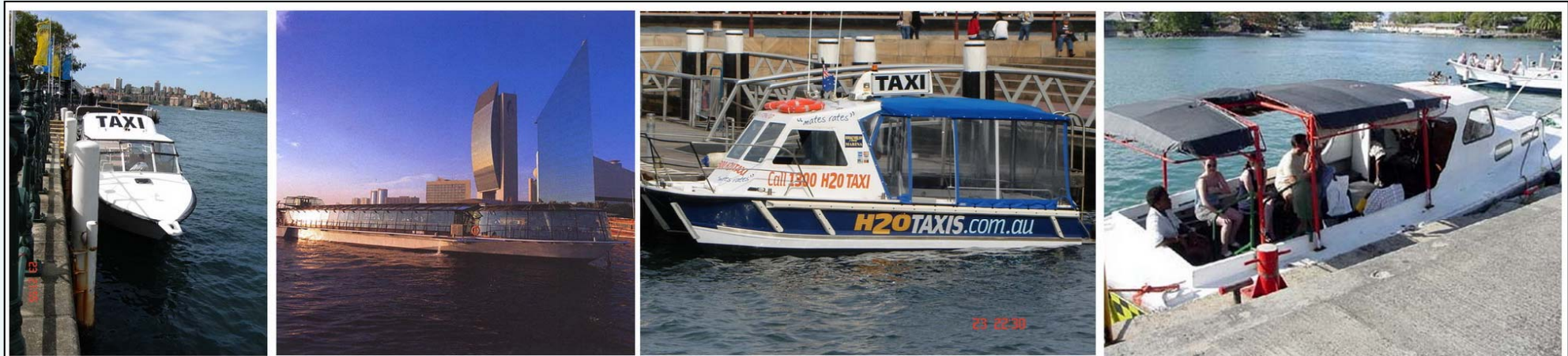
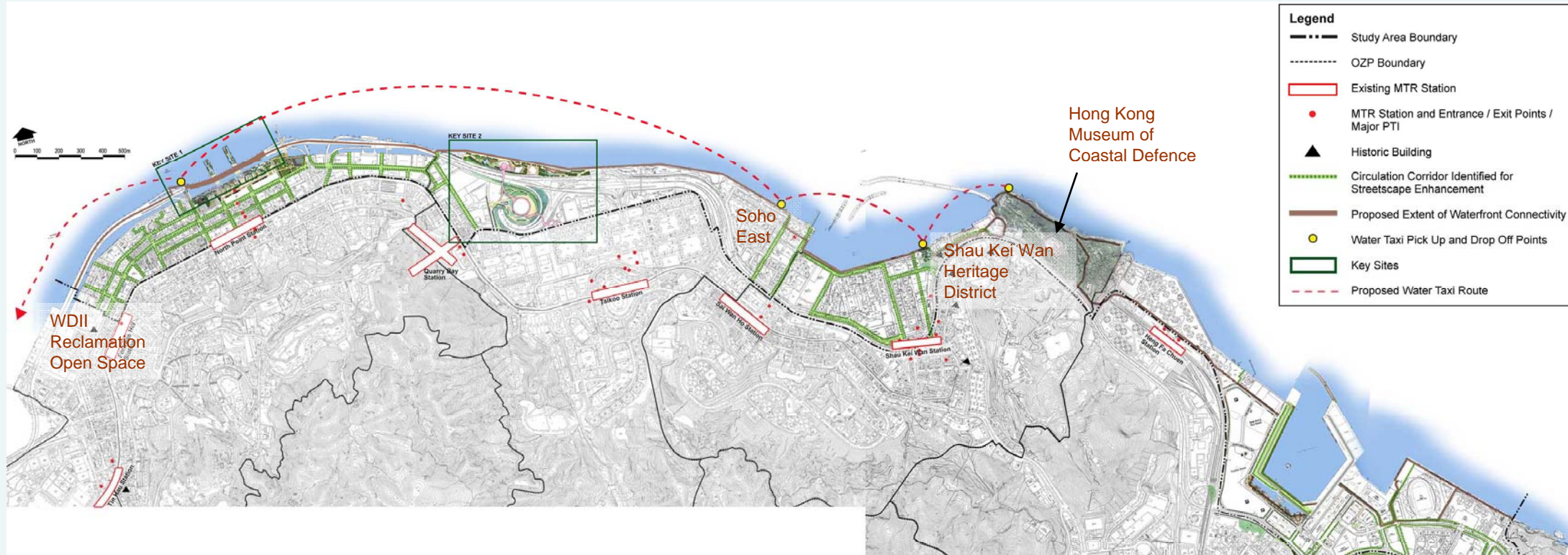


Proposed Enhancement at **Quarry Bay Hoi Yu Street Waterfront** with Cycling Provisions

# Proposed Water Taxi



# Proposed Water Taxi Route



Proposed Watertaxi with Pick up and Drop-offs at Key Attraction Sites along the Island East Waterfront.



# Computer Animation of Enhancement Proposals



Agreement No. CE 51/2008 (TP)



港島東海旁研究 – 可行性研究

**Hong Kong Island East  
Harbour-front Study – Feasibility Study**



Supported by **AECOM**



Agreement No. CE 61/2008 (TP)



## Hong Kong Island East Harbour-front Study

## Task Force on Harbourfront Developments on Hong Kong Island

**Thank you!**



Supported by **AECOM**

2 December, 2010