

# **Task Force on Harbourfront Developments on Hong Kong Island**

---

For discussion  
on 25 May 2011

TFHK/10/2011

## **Design for the Hoi Yu Street Temporary Waterfront Promenade**

### **PURPOSE**

This paper outlines the design proposal for the Hoi Yu Street Temporary Waterfront Promenade pursuant to the discussion at the 1<sup>st</sup> meeting of the Task Force on Harbourfront Developments on Hong Kong Island held on 16 September 2010.

### **BACKGROUND**

#### *Previous consultation with the Task Force*

2. At the 1<sup>st</sup> Task Force meeting, Members were briefed on the proposed development of the Hoi Yu Street Temporary Waterfront Promenade for early public enjoyment prior to the permanent development of the site, which is being reviewed under the ongoing Hong Kong Island East Harbour-front Study by the Planning Department. Members expressed support for the project, and invited the Administration to revert to the Task Force once the more detailed design was available.

#### *Resolution of land issues*

3. On 13 April 2011, the New Hong Kong Tunnel Company Limited voluntarily handed over to the Administration a 90-metre-long, 6-metre-wide strip of land fronting the Eastern Harbour Crossing Ventilation Building for development as a passageway to realise connectivity of the promenade.

4. At the eastern end of the promenade, a currently vacant government site of approximately 2 metres wide and 35 metres in length at the south of the Quarry Bay Gas Pigging Station would be built as a passageway for connection with the existing Quarry Bay Park Phase I. The arrangement has received support from the Eastern District Council.

#### *Project funding*

5. Funding for the construction of the promenade as a minor works project has been secured in March 2011.

# **Task Force on Harbourfront Developments on Hong Kong Island**

---

TFHK/10/2011

## **PROPOSED DESIGN REFINEMENTS**

6. Members' comments expressed in the 1<sup>st</sup> Task Force meeting have been taken into account in the proposed design of the temporary promenade, which is of approximately 500 metres long with a width varying from 6 to 10 metres. It is proposed to be provided with amenity facilities to create a leisure setting, acting as an extension of the existing Quarry Bay Park Phase I. The following facilities are considered suitable –

- (a) seaside walkways for leisure strolls and jogging;
- (b) a pet garden for members of the public to take pleasure walks with their pets and enjoy sea views;
- (c) a series of rain-shelters with sitting facilities for passive activities;
- (d) trees and shrubs planting; and
- (e) other ancillary facilities of a basic nature, such as landscape irrigation, temporary toilet and drainage facilities, etc.

— Development proposals are set out at **Annexes 1** to **5** for reference.

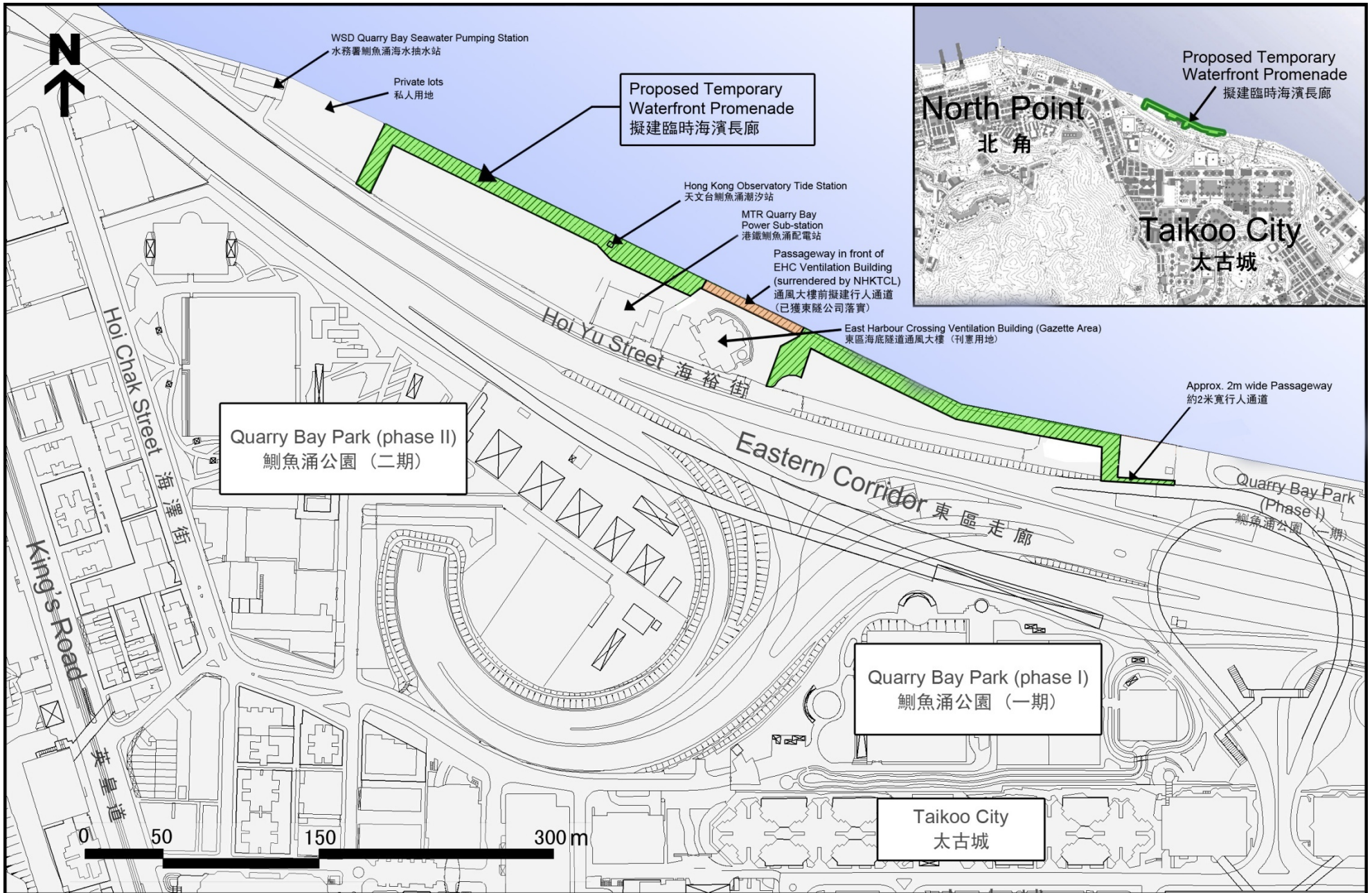
## **WAY FORWARD**

7. Construction works is now scheduled for commencement in late 2011 for completion by end 2012.

## **VIEWS SOUGHT**

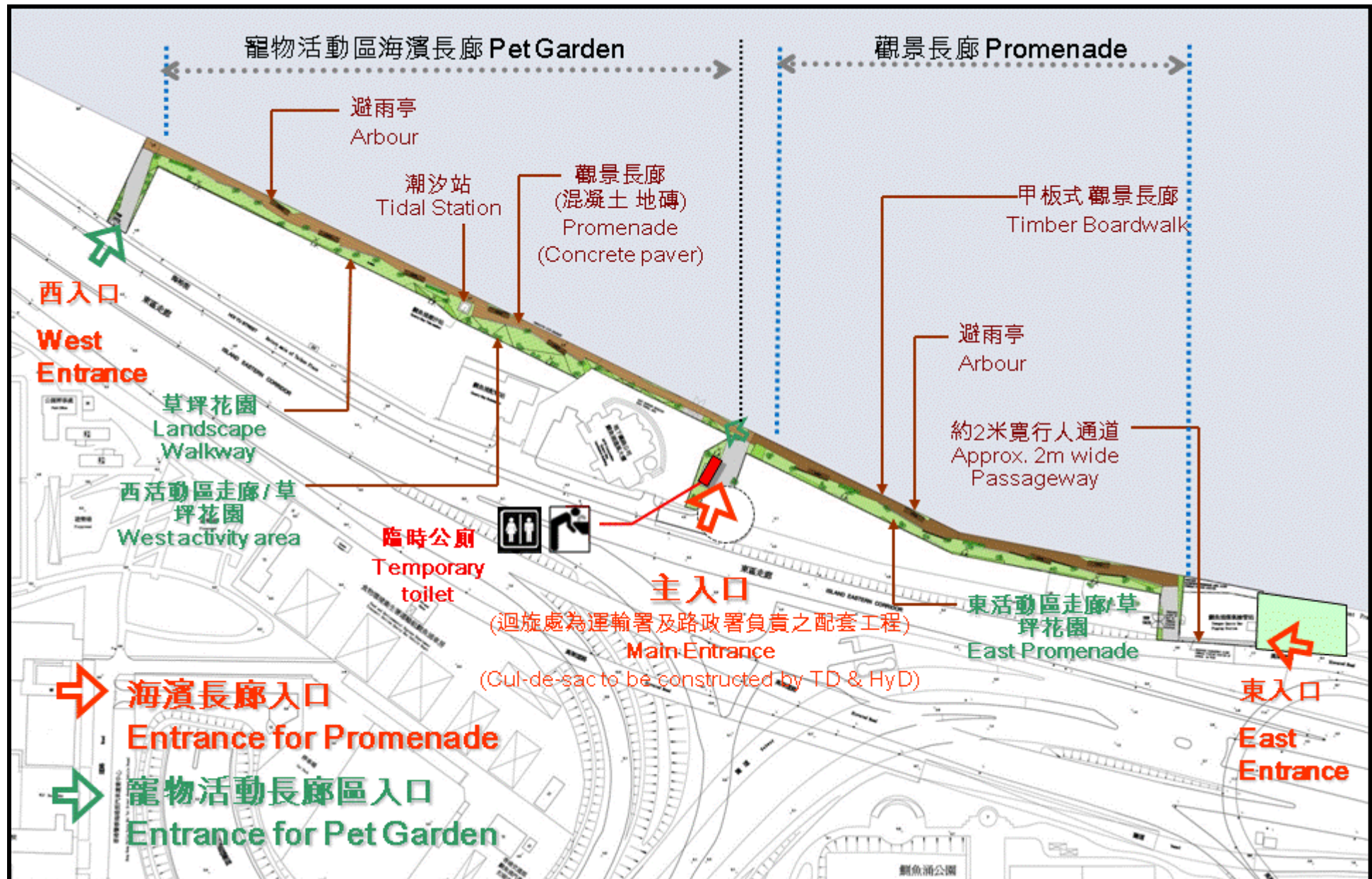
8. Members are invited to note the progress of the project and give views on the design proposal outlined in the paper.

**Development Bureau**  
**Architectural Services Department**  
**Civil Engineering and Development Department**  
**Lands Department**  
**Leisure and Cultural Services Department**  
**Planning Department**  
**May 2011**





設計構思  
Design Proposal



設計構思  
Design Proposal

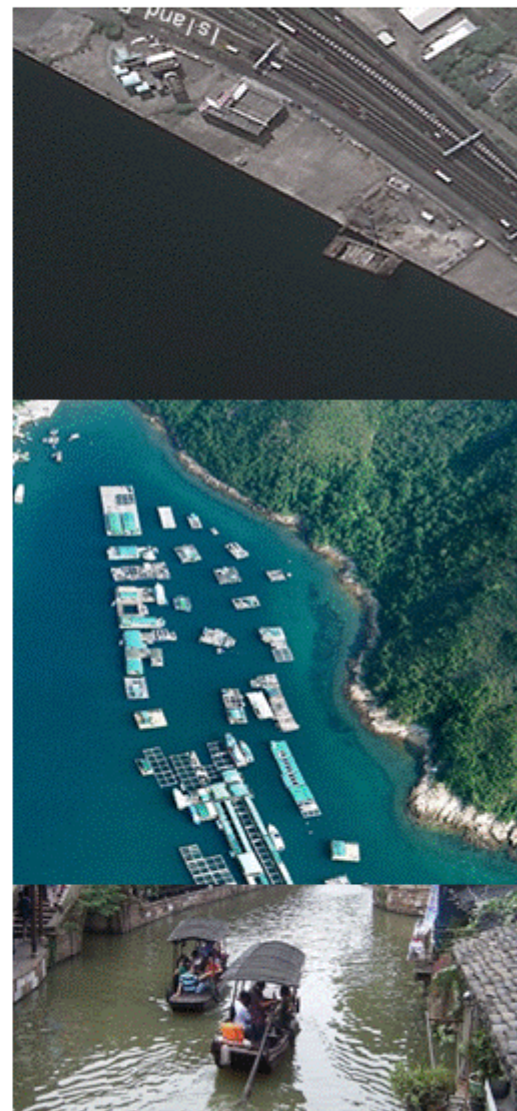
局部平面圖

Part Plan

避雨亭  
Arbour

觀景長廊  
(下層)  
Promenade  
(Lower deck)

草坪花園  
(上層)  
Lawn  
(Upper deck)



設計構思  
Design Proposal

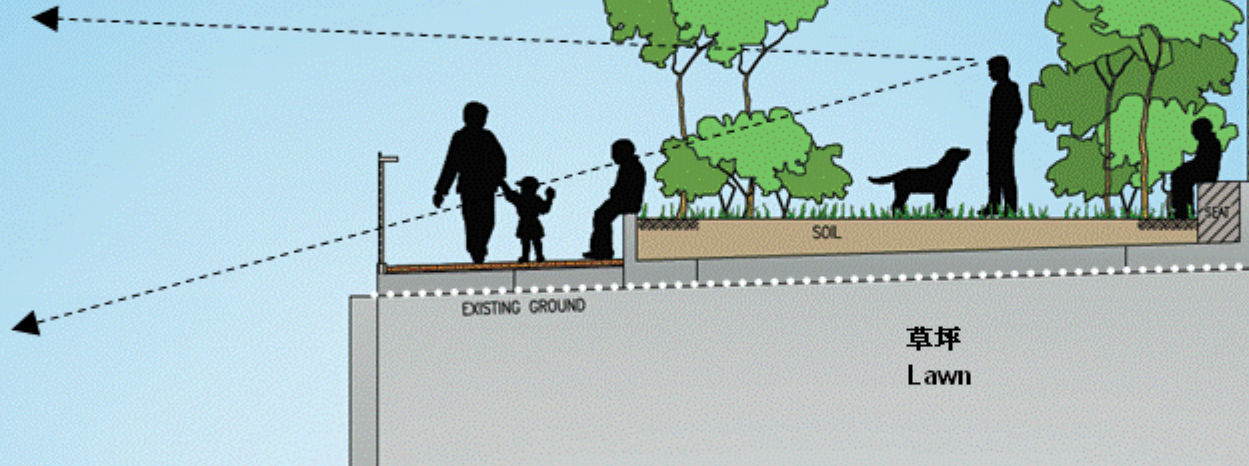
# 設計構思 Design Proposal

10 M  
typical  
ZONE

觀景長廊  
Walkway

寵物活動區  
Pet Activity Area

OU Site  
毗鄰發展用地



休息涼亭  
Arbour



觀望海景  
Sea view



沿海欄杆  
Metal Railing



木甲板長廊  
Timber boardwalk



園景路徑  
Landscape walkway



休憩花園  
Garden