

# **Task Force on Harbourfront Developments on Hong Kong Island**

For discussion  
on 22 September 2023

TFHK/04/2023

## **Hong Kong Maritime Museum Anchor Plaza Visitor Centre located in front of Central Piers No. 9 and 10**

### **PURPOSE**

This paper is to brief Members on the progress of the design of the Hong Kong Maritime Museum Anchor Plaza Visitor Centre (HKMMAP) which is to be located on Government land in front of Central Piers No 9 and 10. The project is to be undertaken with the financial support of the Hong Kong Jockey Club.

### **BACKGROUND**

2. The Hong Kong Maritime Museum (HKMM) is located over three floors on Pier 8 with magnificent views over Victoria Harbour and is a vibrant, cultural institution dedicated to preserving, collecting and displaying objects that tell the stories of Hong Kong as a port, its history of maritime trade with the Pearl River Delta and the world and of the importance of conserving our marine environment. A non-profit registered charity founded in 2003 by members of the Hong Kong Shipowners Association originally located in the former Murray Barracks in Stanley, the Museum relocated in 2013 to Pier 8, in the heart of the Central Harbour Waterfront. Today the Museum attracts about 100,000 visitors annually where across 4,600 square metres more than 1,100 objects are displayed in 13 galleries.

3. In addition to the premises in Pier 8, HKMM enjoys on Short Term Tenancy from the Lands Department (STT NHX-790) the use of a site of approximately 1,490 m<sup>2</sup> of Government land located in front of Central Piers No 9 and 10, which allows for the development of an Anchor Plaza with associated pavilion. Currently, an application has been made to the Lands Department to extend the duration of the Short-Term Tenancy to 5 years.

# **Task Force on Harbourfront Developments on Hong Kong Island**

For discussion  
on 22 September 2023

TFHK/04/2023

4. The Culture, Sports and Tourism Bureau (CSTB) has outlined their policy support for the extension of the Short-Term Tenancy. The Buildings Department (BD), had approved the General Building Plans on 17 August 2023.

## **SCOPE OF WORKS**

5. The proposed scope of works comprises the following –
- (a) A plaza for the display of an historical anchor; and
  - (b) A pavilion as a visitor centre with Art-tech displays.

## **PROPOSED DESIGN**

6. The design is intended to provide an iconic and vibrant new attraction on the Harbourfront which will attract local, Mainland and overseas visitors alike, while fostering a strong sense of community, and place through educational installations that will showcase Hong Kong, its magnificent harbour and its maritime legacy.

## **HARBOUR PLANNING PRINCIPLES**

7. We consider the proposal aligns with the Harbour Planning Principles in the following aspects –

### **(a) Accessible Harbour**

The HKMMAP is designed to ensure connectivity along the harbourfront on the pedestrian promenade between Admiralty and Central. The HKMMAP is accessible and provides unrestricted and convenient visual and physical access at grade for pedestrians of all abilities. The proposed design does not obstruct the existing circulation along the promenade and offers multiple passages for pedestrians travelling to and from the Central piers and Tamar Park.

# Task Force on Harbourfront Developments on Hong Kong Island

For discussion  
on 22 September 2023

TFHK/04/2023

## **(b) Integrated Planning**

The HKMMAP will also become a prime nodal attraction with pedestrian connections between the future development of Site 3 at the New Central Harbourfront and enhance the economic, environmental and social impact of the harbourfront areas. The majority of the site are open plaza spaces to maximize public enjoyment of open space, while the visitor centre maintains a relatively small footprint to minimize its visual impact to the existing site.

## **(c) Vibrant Harbour**

The innovative design of the HKMMAP and its multifaceted elements will ensure it becomes a vibrant cultural attraction at the heart of the Central harbourfront. The HKMMAP will be used to host a wide range of community events, performances, gatherings, and ceremonies as well as a light show at night which will attract a large number of visitors of all backgrounds.

## **(d) Public Enjoyment**

Seating around the anchor and pavilion will create space for informal gatherings and attract passers-by to sit and take a rest. The pavilion forms a shelter to provide a covered resting space for members of the public. The events and art-tech displays will provide an interactive educational and entertainment experience for members of the public whether young or old. At night, the HKMMAP will be attractively lit with informative and entertaining presentations presented on an immersive projection system within the pavilion.

## **(e) Sustainable Development**

The project incorporates green building designs to minimize environmental impact. The unique architectural form of the

# **Task Force on Harbourfront Developments on Hong Kong Island**

For discussion  
on 22 September 2023

TFHK/04/2023

pavilion actively promotes natural ventilation to minimize energy consumption with no air-conditioning provided. Other green building techniques such as the use of eco-paving blocks, potted plants and efficiency of structural design are also incorporated into the design.

## **(f) Stakeholder Engagement**

Public engagement exercises to ensure community engagement have been planned and will be held shortly to collect public views. These will fully be taken into consideration through the design and construction process. This exercise begins with the submission to the Task Force.

## **(g) Preserving Victoria Harbour**

The anchor which will be the focus of the project is from the Seawise Giant, the largest ship to ever have sailed. This ship was owned and operated by a Hong Kong shipping company. This anchor thus symbolises the Hong Kong Story and Spirit. The preservation and display of the anchor at such a prominent location of the harbourfront enhances the public's enjoyment of the harbourfront and showcases the rich maritime and cultural heritage of Hong Kong through engagement and education. The display of such an important historical artefact located at the harbourfront will also send a strong message to the public about the importance of preserving our cultural and heritage assets, and for the protection of Victoria Harbour.

## **(h) Proactive Harbour Enhancement**

The design of the HKMMAP is unique, iconic, and interactive as well as educational. The Anchor Plaza will be a new attraction on the Harbourfront. As part of this, the pavilion will showcase Hong Kong's design excellence and creativity whilst providing an opportunity to showcase urban design excellence to local, Mainland and overseas visitors alike. The implementation of art-tech elements is

# **Task Force on Harbourfront Developments on Hong Kong Island**

For discussion  
on 22 September 2023

TFHK/04/2023

expected to attract both locals and tourists to the harbourfront and showcases the cultural strength of Hong Kong, as promoted in the Government's Policy Address in 2020. The existing site is as yet relatively undeveloped, and we believe the proposed design will proactively enhance the Harbourfront and create an exciting cultural landmark.

## **PROGRAMME**

8. The proposed works are anticipated to commence in the 1st quarter of 2024 for completion in the 4<sup>th</sup> quarter of 2024.
9. Layout plans and the proposed design of the project are at **Annex A**.

## **WAY FORWARD**

10. After consultation with the Task Force, we will complete the wider public engagement exercise and will so far as is practicable take into account all comments received as we refine the design.

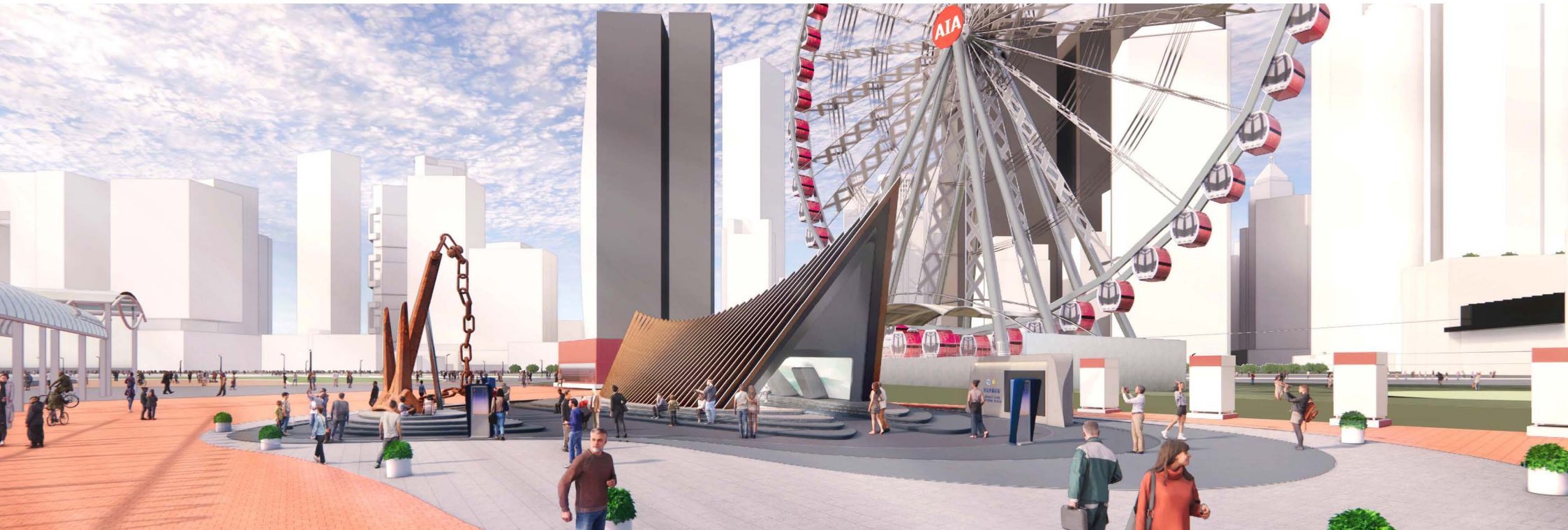
## **ADVICE SOUGHT**

11. Members are invited to offer their support for this proposal as an important addition to the Hong Kong Central Waterfront.

## **APPENDIX**

**Annex A** Concept Design Proposal

**Hong Kong Maritime Museum  
September 2023**



# HONG KONG MARITIME MUSEUM ANCHOR PLAZA VISITOR CENTRE

LOCATED IN FRONT OF CENTRAL PIERS NO. 9 & 10





# HISTORY OF THE ANCHOR

ANCHOR FOR THE LARGEST SHIP THAT EVER SAILED



## SEAWISE GIANT

- "TWICE THE SIZE OF THE TITANIC"

- BUILT IN 1979

- TRADED FOR 15 YEARS UNDER HONG KONG SHIPPING MANAGEMENT

- WAS OWNED BY TUNG CHAO YUNG.  
(INITIALS "CY" INSPIRED THE NAME "SEAWISE")

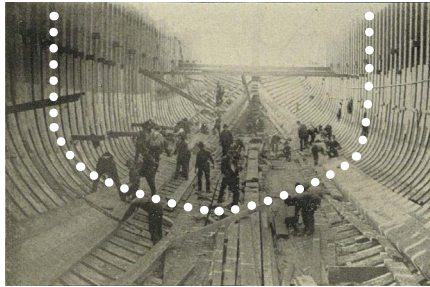
- DISPLAY TO THE PUBLIC AS PART OF AN OUTDOORS EDUCATIONAL PLAZA



# CONCEPT DESIGN

AN EDUCATIONAL PLAZA FOR THE DISPLAY OF THE ANCHOR

HISTORY, ART AND SCIENCE



+



+

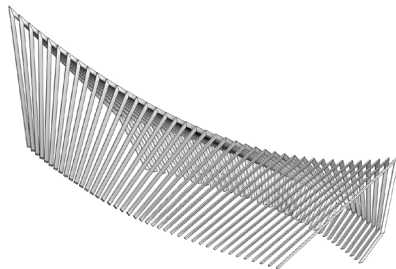


DIFFERENT PROFILE OF SHIPS OVER TIME



UNIQUE ARCHITECTURAL FORMS

REINTERPRETATION  
OF TRADITIONAL  
BOAT FORM



REINTERPRETATION  
OF THE SEA AND  
WAVES



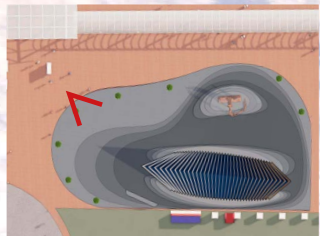
## CONNECTING THE PUBLIC WITH THE HONG KONG HARBOUR



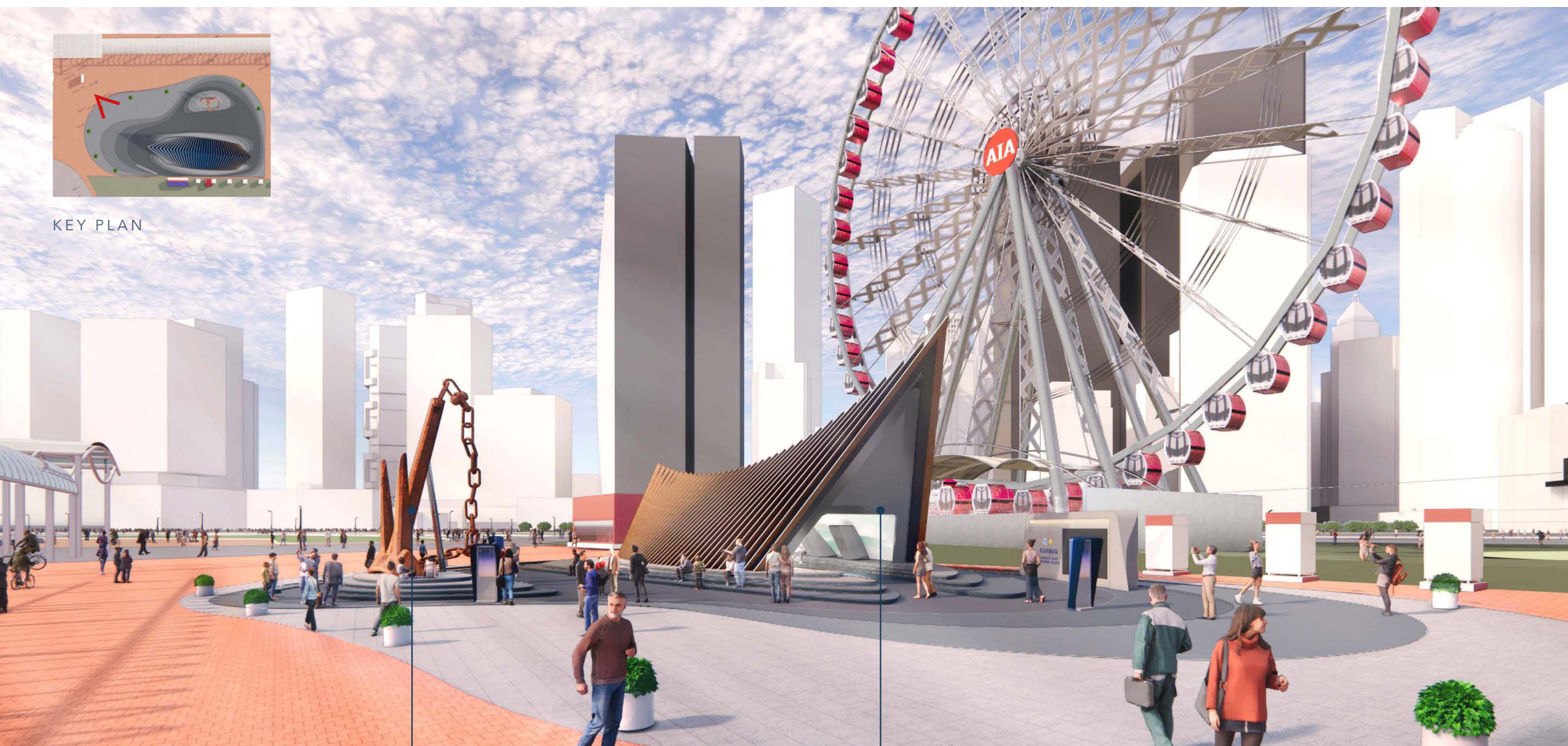


# PROPOSED DESIGN

LETS START OUR JOURNEY!



KEY PLAN



DISPLAY OF ANCHOR

VISITOR CENTRE PAVILION



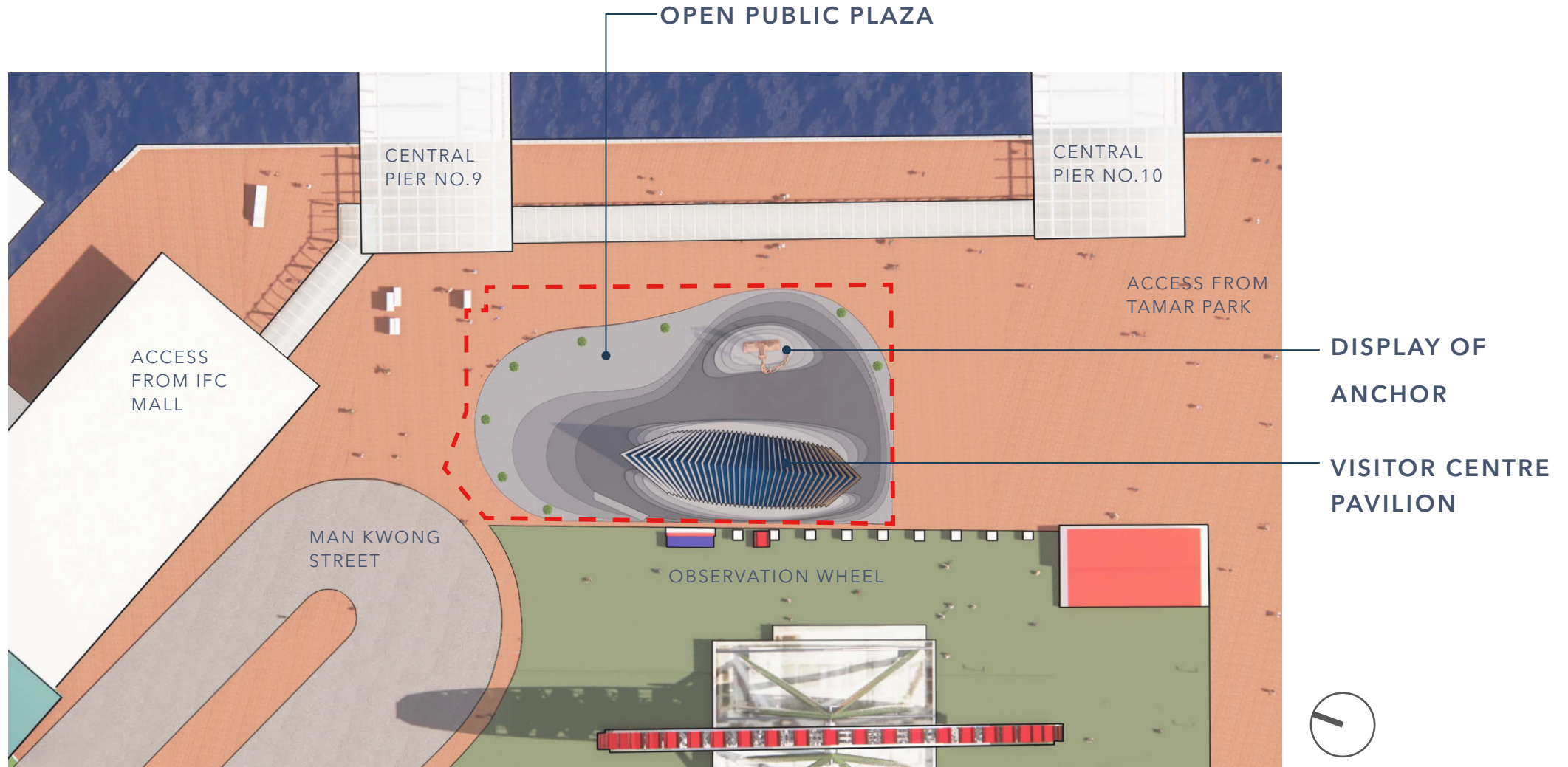
HONG KONG MARITIME MUSEUM ANCHOR PLAZA VISITOR CENTRE  
REINTERPRETING HISTORY, ART AND SCIENCE

ARTA  
ARCHITECTS



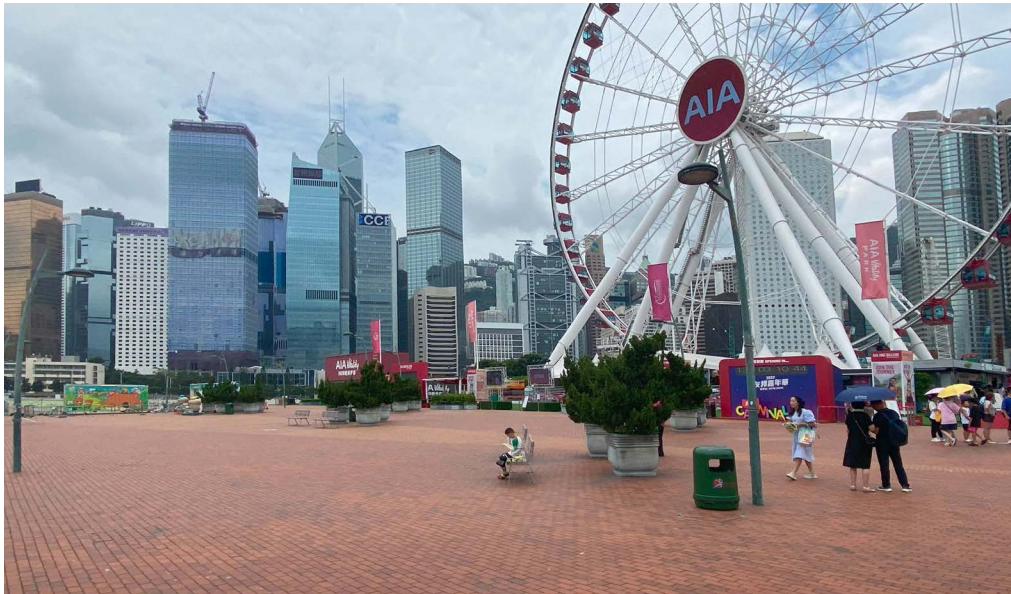
# SITE PLAN

EXCITING AND NEW CULTURAL LANDMARK AT THE HARBOURFRONT



# SITE CONTEXT

## EXCITING AND NEW CULTURAL LANDMARK AT THE HARBOURFRONT



EXISTING SITE CONDITION



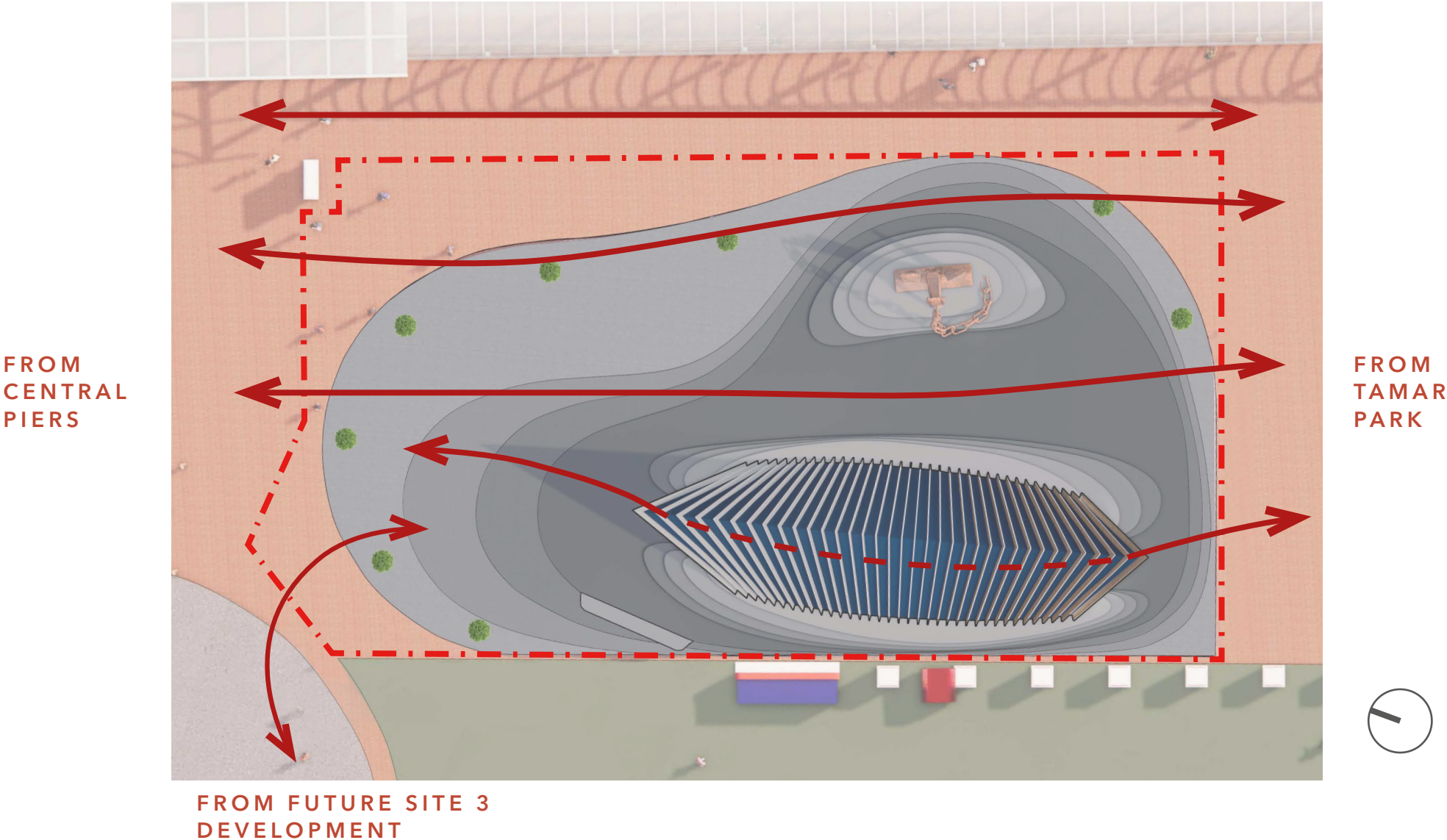
PROPOSED SCHEME





# 1. ACCESSIBLE HARBOUR

UNRESTRICTED AND CONVENIENT VISUAL AND PHYSICAL ACCESS



## 2. INTEGRATED PLANNING

SMALL FOOTPRINT TO MAXIMIZE PUBLIC OPEN SPACE

### SITE COVERAGE

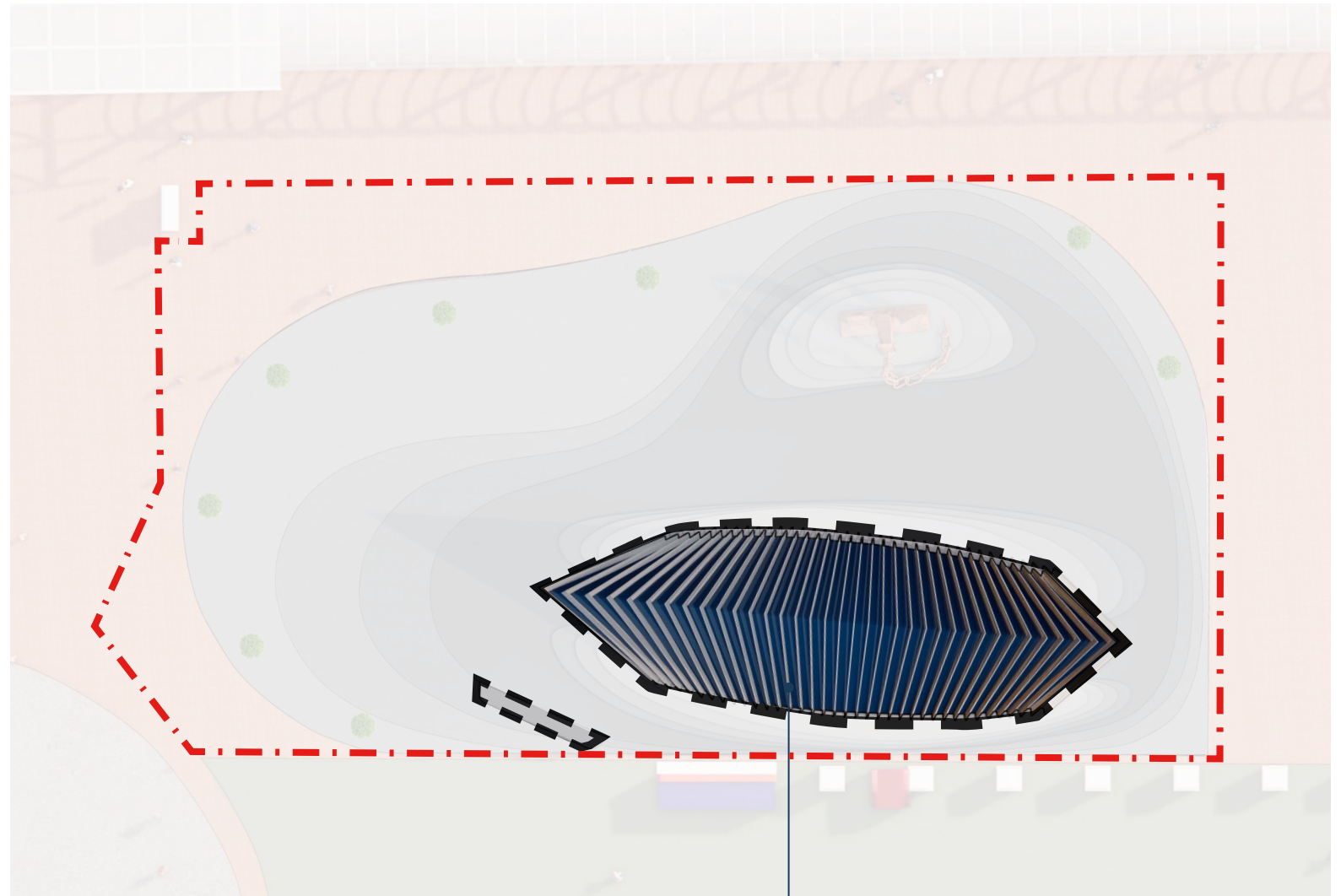
= LESS THAN **15%**

(ALLOWABLE = 100%)

### PLOT RATIO

= LESS THAN **0.15**

(ALLOWABLE = 5)



VISITOR CENTRE PAVILION





## 2. INTEGRATED PLANNING

LOW HEIGHT OF PAVILION TO MINIMIZE VISUAL IMPACT

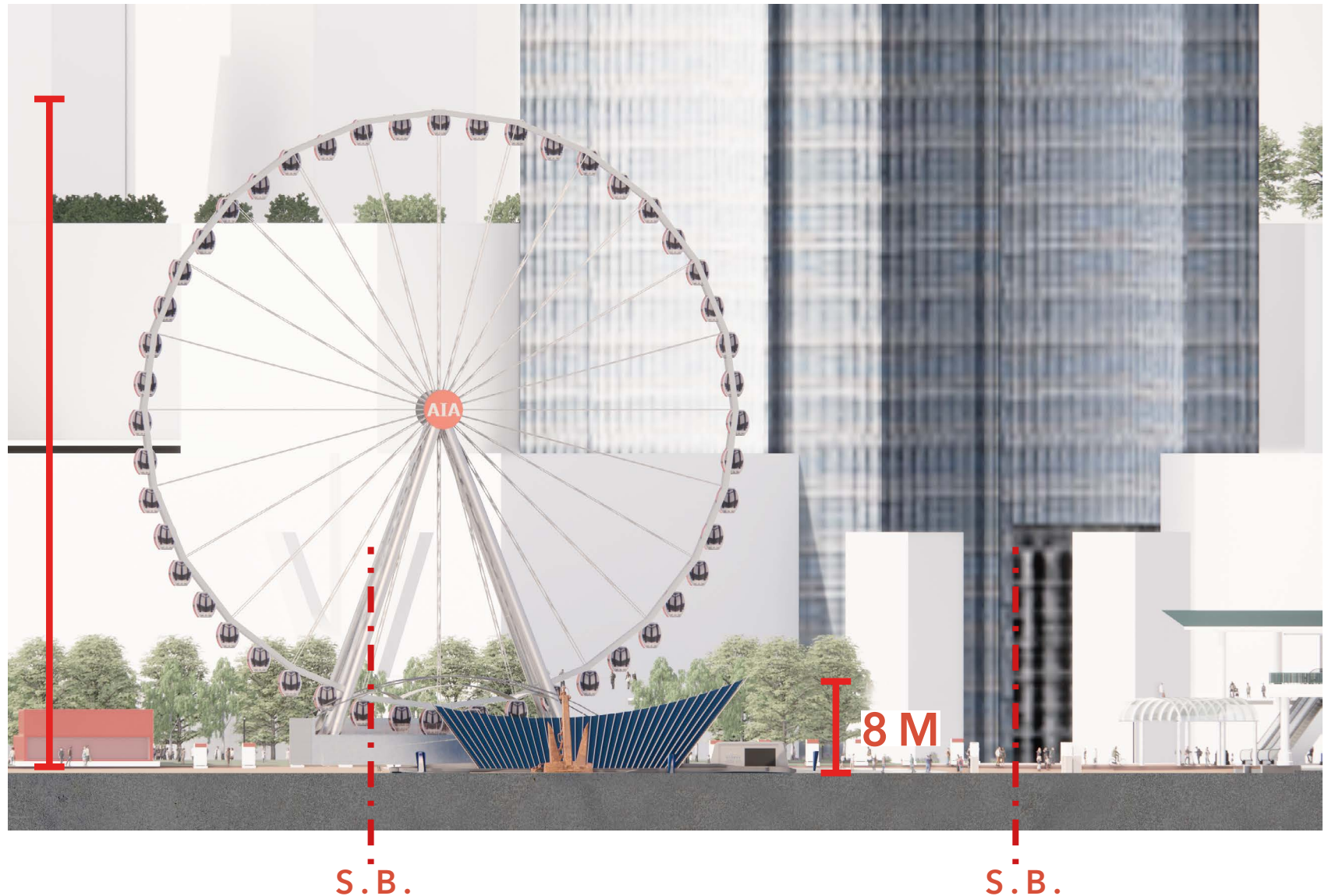
HONG KONG  
OBSERVATION WHEEL  
& AIA VITALITY PARK

**VIEWS  
FROM THE  
SKY**

60 M

HONG KONG  
MARITIME MUSEUM  
ANCHOR PLAZA  
VISITOR CENTRE

**VIEWS  
FROM THE  
SEA**



## 2. INTEGRATED PLANNING

LOW HEIGHT OF PAVILION TO MINIMIZE VISUAL IMPACT

HONG KONG  
OBSERVATION WHEEL  
& AIA VITALITY PARK  
.....

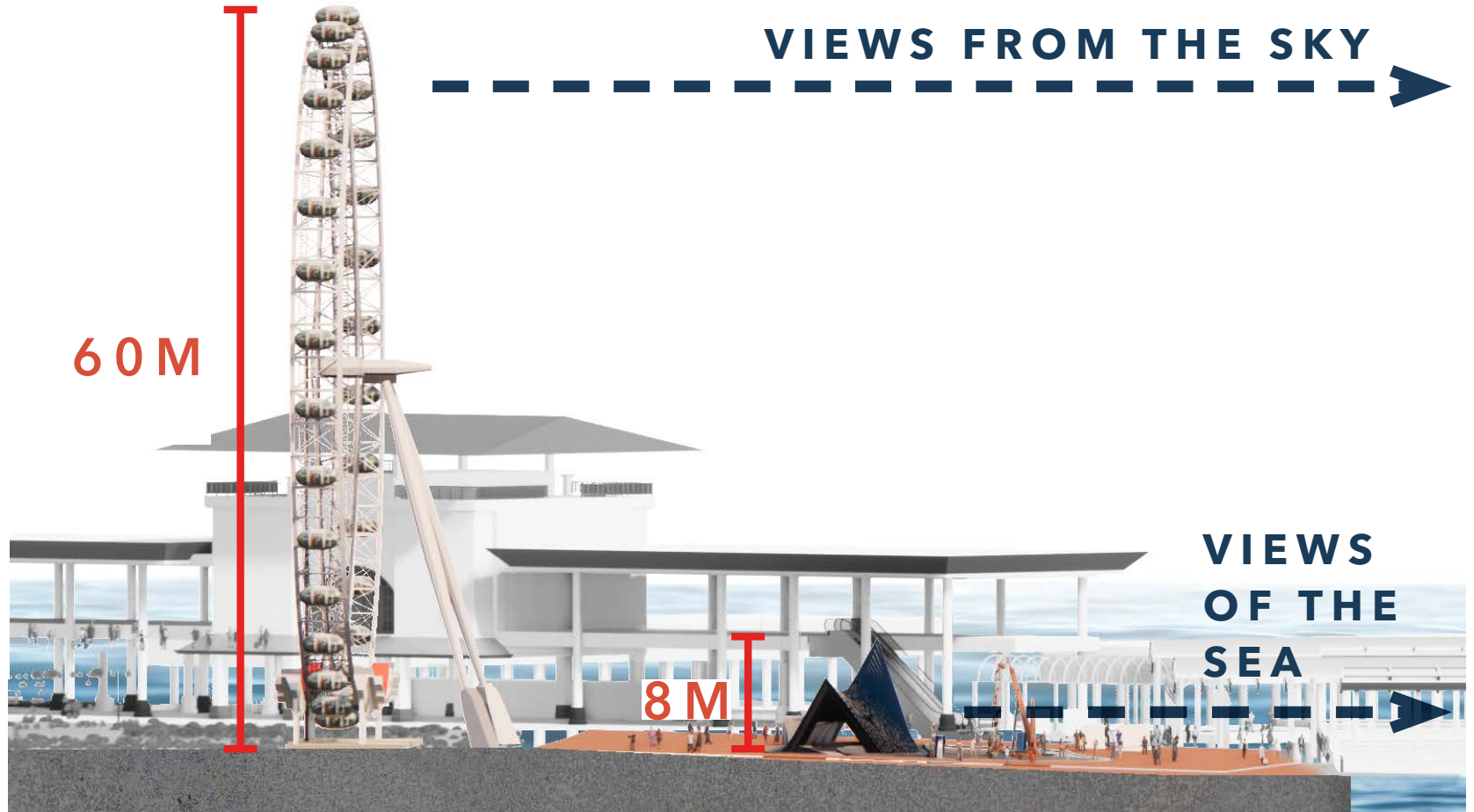
60 M

VIEWS FROM THE SKY

HONG KONG  
MARITIME MUSEUM  
ANCHOR PLAZA  
VISITOR CENTRE  
.....

VIEWS  
OF THE  
SEA

8 M





### 3. VIBRANT HARBOUR

FLEXIBILITY FOR DIFFERENT CULTURAL AND LEISURE EVENTS AROUND THE ANCHOR



PERFORMANCES



GATHERINGS



CEREMONIES



LIGHT SHOW

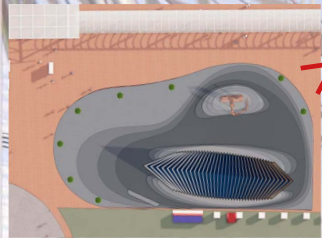




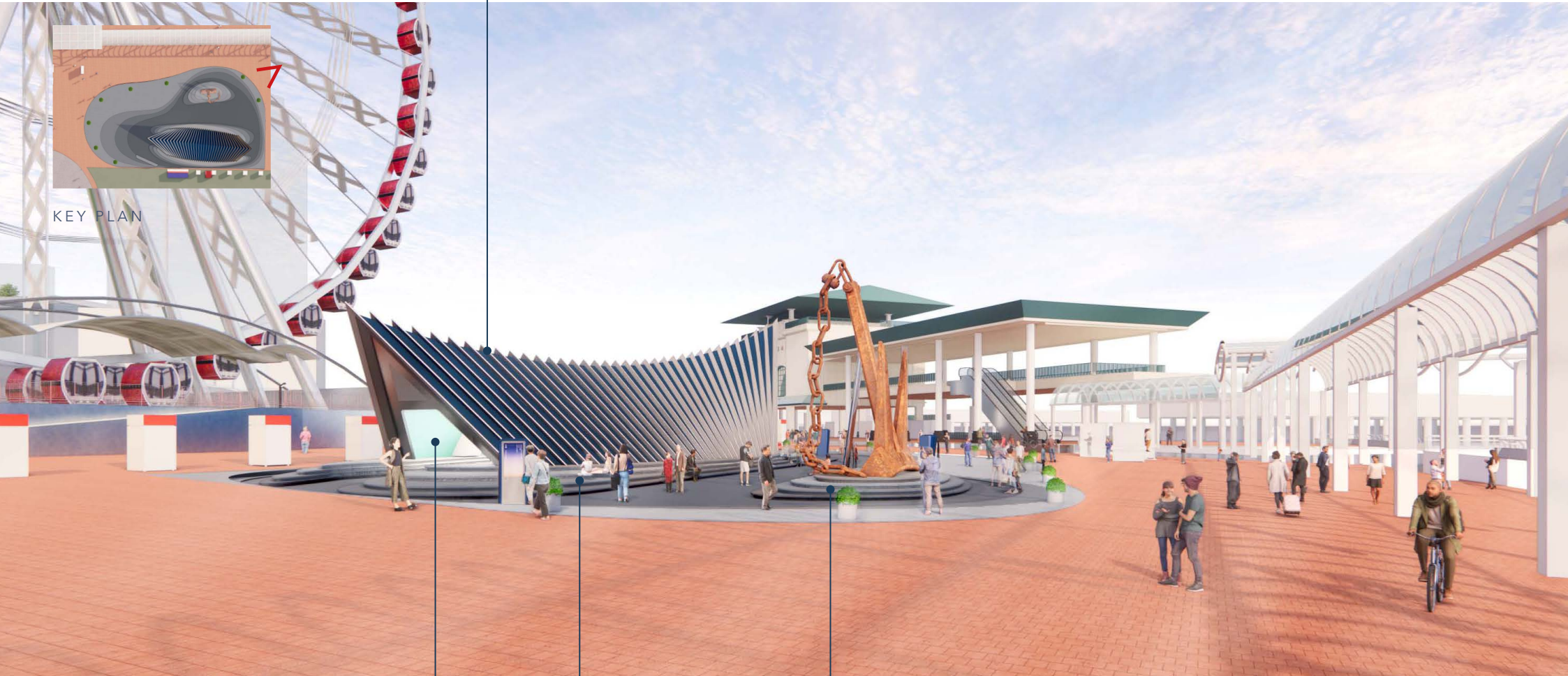
# 4. PUBLIC ENJOYMENT

SEATING FOR RESTING AND TO ENJOY THE HARBOUR VIEW

COVERED SEATING AREA  
PROVIDING SHELTER FROM THE RAIN



KEY PLAN



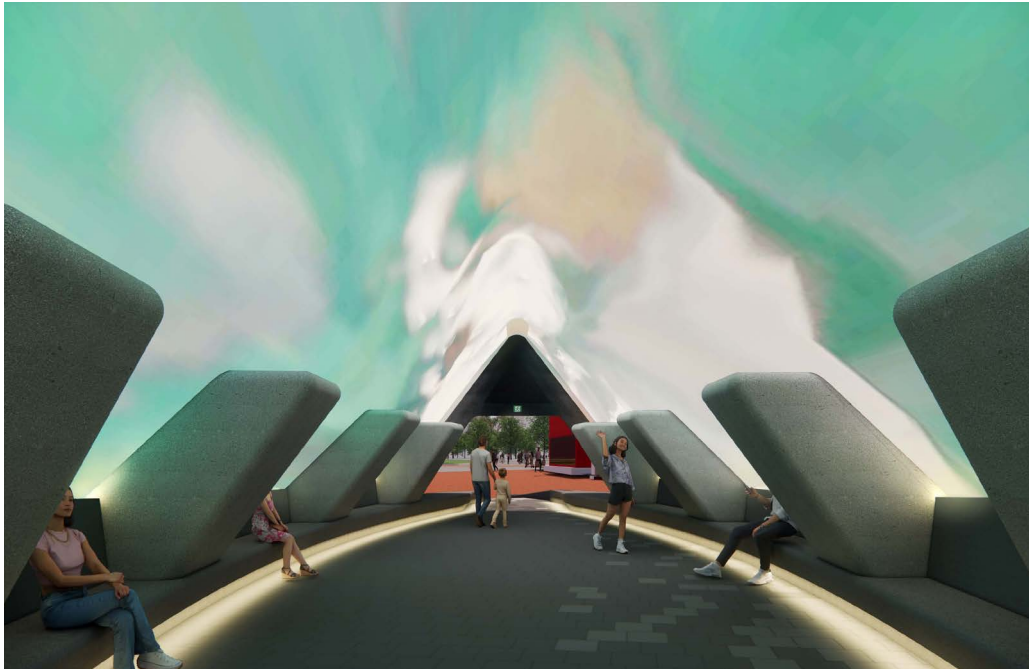
FREE ADMISSION

PUBLIC SEATING



## 4. PUBLIC ENJOYMENT

ART-TECH TO ATTRACT LOCALS AND TOURISTS TO THE HARBOURFRONT



**“LEVERAGING THE BOLD AND INNOVATIVE SPIRIT OF LOCAL ARTISTS, I BELIEVE THAT, WITH THE ACTIVE PROMOTION AND SUPPORT OF THE GOVERNMENT, ART TECH WILL FLOURISH AND THRIVE IN HONG KONG.”**

THE CHIEF EXECUTIVE’S 2020 POLICY ADDRESS



HONG KONG MARITIME MUSEUM ANCHOR PLAZA VISITOR CENTRE  
REINTERPRETING HISTORY, ART AND SCIENCE

ARTA  
ARCHITECTS



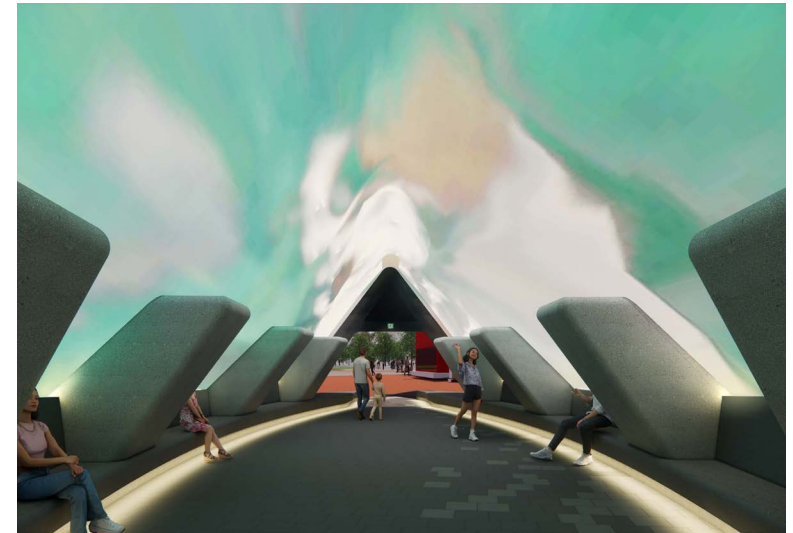
## 4. PUBLIC ENJOYMENT

ART-TECH TO PROVIDE ENTERTAINMENT AND EDUCATION TO THE PUBLIC



1. COVERED IMMERSIVE SPACE

2. INTERACTIVE DISPLAY BOARD



1. IMMERSIVE SPACE PROJECTIONS



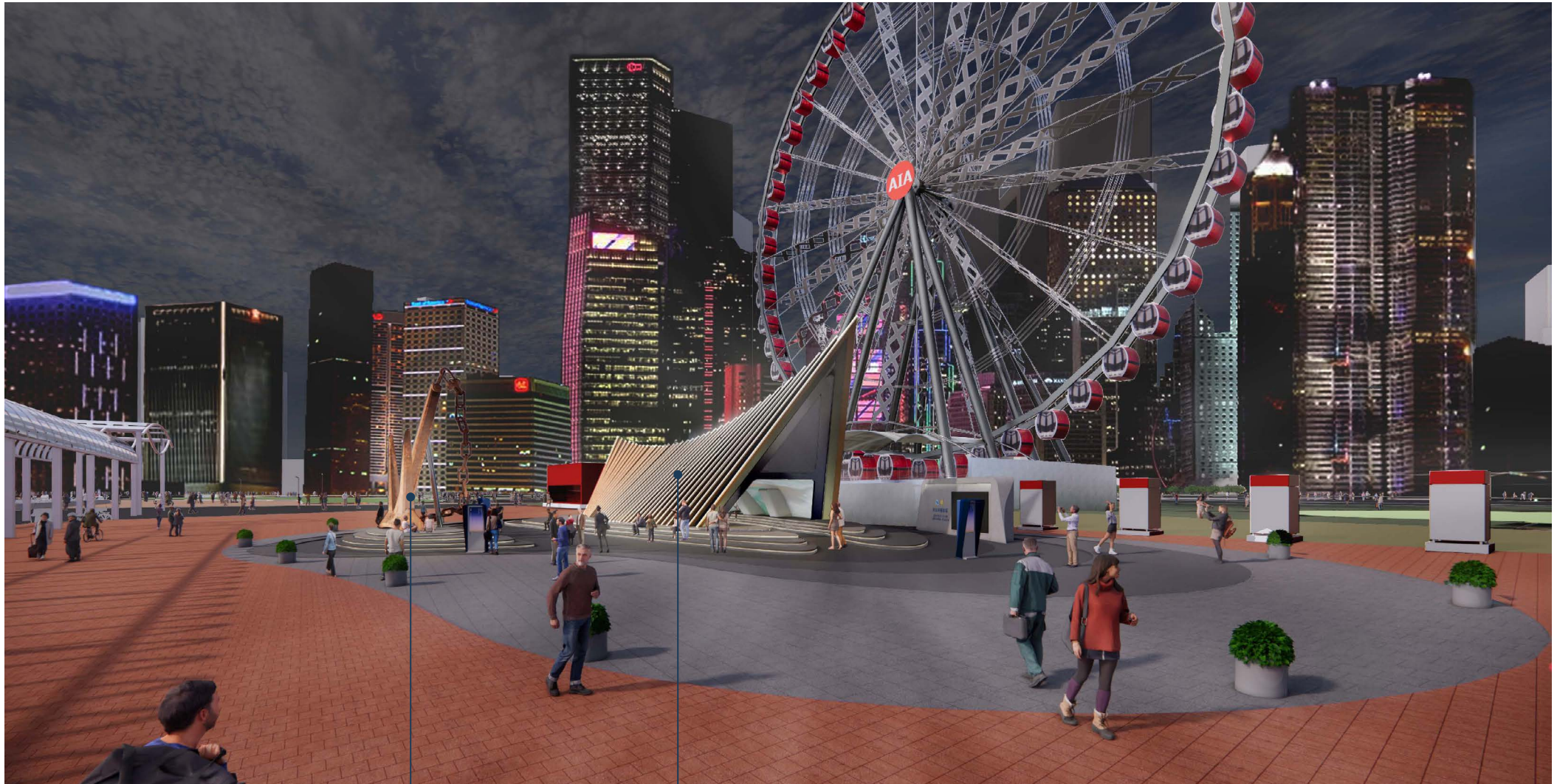
2. INTERACTIVE DISPLAY BOARDS





## 4. PUBLIC ENJOYMENT

ART-TECH TO PROVIDE ENTERTAINMENT AND EDUCATION TO THE PUBLIC



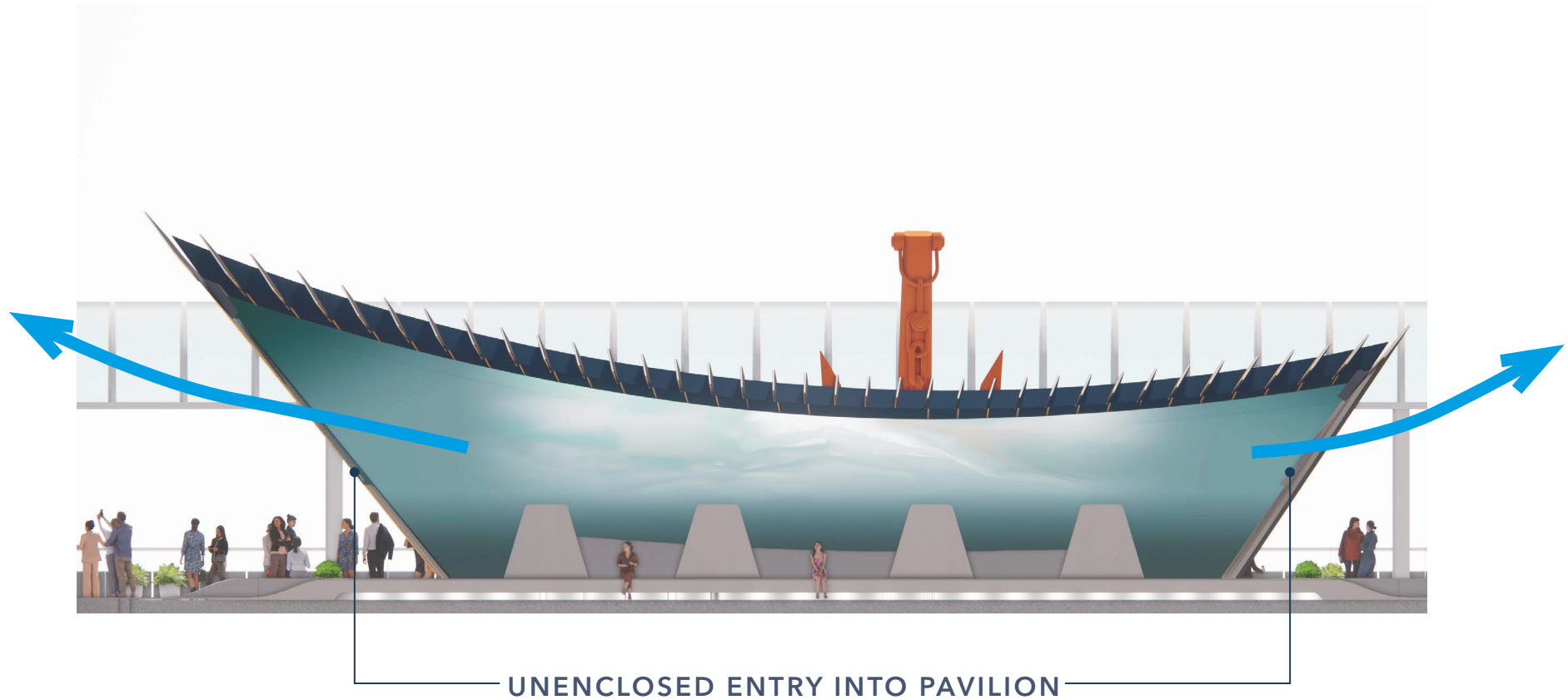
3. ANCHOR LIGHT SHOW

4. FACADE LIGHT SHOW



## 5. SUSTAINABLE DEVELOPMENT

THE UNIQUE ARCHITECTURAL FORM ENCOURAGES NATURAL VENTILATION



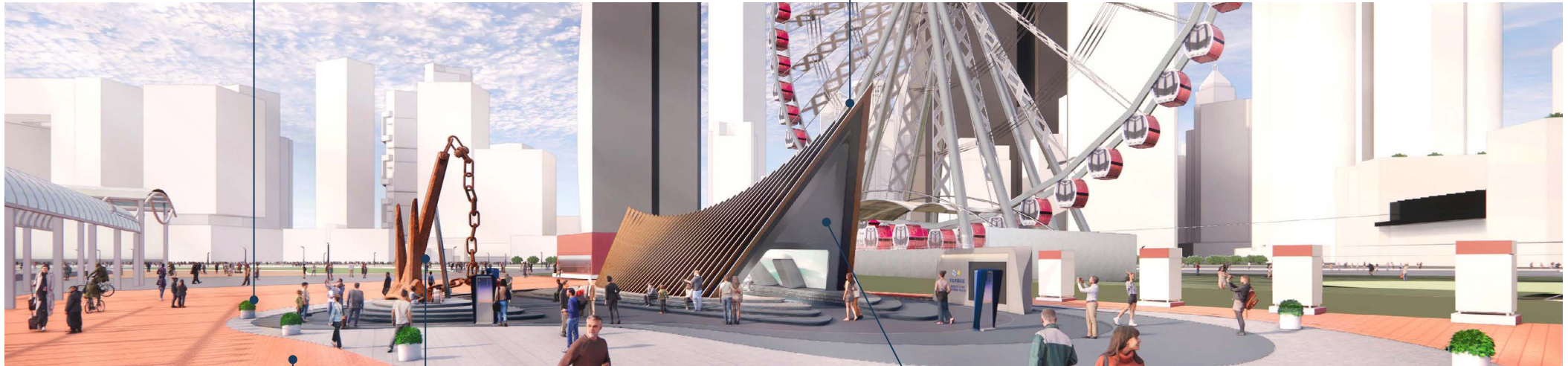


# 5. SUSTAINABLE DEVELOPMENT

## USE OF GREEN BUILDING DESIGNS

POTTED PLANTS TO IMPROVE ENVIRONMENTAL QUALITY AT PEDESTRIAN LEVEL

PAVILION PROVIDES SHADING AND TO MAINTAIN COOL TEMPERATURES



ECO PAVING BLOCKS

PRESERVATION AND REUSE EXISTING ANCHOR TO MINIMIZE USE OF NEW CONSTRUCTION MATERIALS

MODEST AND SLIM PAVILION ENSURES MINIMAL IMPACT TO EXISTING AIR VENTILATION OF THE SITE



## 6. PRESERVING VICTORIA HARBOUR

### PRESERVATION OF THE ANCHOR AND PROTECTING OUR HARBOUR



EXISTING



DISPLAY HISTORICAL ARTEFACT FOR PUBLIC ENJOYMENT





# 7. STAKEHOLDER ENGAGEMENT

## HONG KONG MARITIME MUSEUM ENGAGING WITH THE COMMUNITY



COMMUNITY VISIT



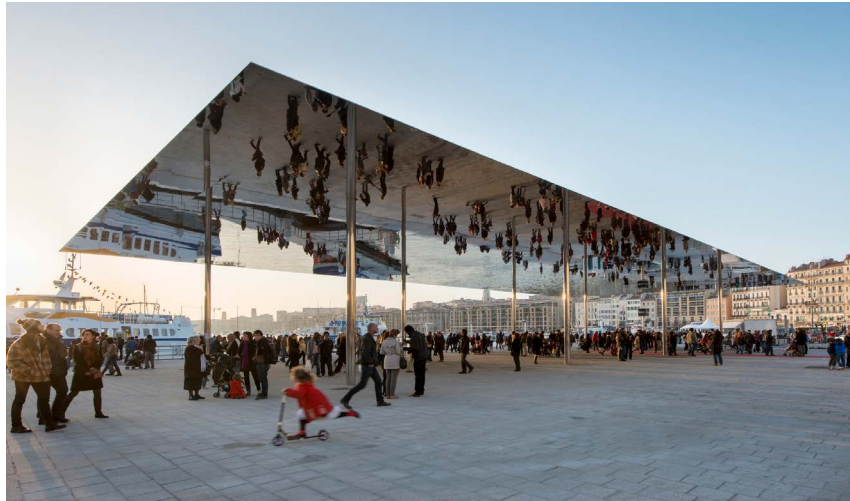
SCHOOL VISIT

AN OPPORTUNITY TO ENGAGE THE PUBLIC VIEWS THROUGHOUT THE DESIGN PROCESS



# 8. PROACTIVE HARBOUR ENHANCEMENT

## WORLDWIDE OUTDOOR CITY LANDMARK



VIEUX PORT PAVILION, MARSEILLE



AUSTRALIAN NATIONAL MARITIME MUSEUM, SYDNEY



NATIONAL MARITIME MUSEUM OF CHINA, TIANJIN





# 8. PROACTIVE HARBOUR ENHANCEMENT

## WORLDWIDE DISPLAY OF ANCHOR



MERSEYSIDE MARITIME MUSEUM, LIVERPOOL



NATIONAL MARITIME MUSEUM, GREENWICH



INTERNATIONALES MARITIMES MUSEUM, HAMBURG



NAVAL MUSEUM OF MANITOBA, MANITOBA





# 8. PROACTIVE HARBOUR ENHANCEMENT

ENHANCE VICTORIA HARBOUR BRAND IDENTITY TO THE INTERNATIONAL COMMUNITY





# SUMMARY OF HARBOUR PLANNING PRINCIPLES

## 1. ACCESSIBLE HARBOUR

- UNRESTRICTED AND CONVENIENT VISUAL AND PHYSICAL ACCESS



## 2. INTEGRATED PLANNING

- SMALL FOOTPRINT FOR MINIMAL IMPACT TO THE SITE



## 3. VIBRANT HARBOUR

- FLEXIBILITY FOR DIFFERENT CULTURAL AND LEISURE EVENTS AROUND THE ANCHOR



## 4. PUBLIC ENJOYMENT

- BENCHES FOR RESTING AND TO ENJOY THE HARBOUR VIEW
- ART-TECH TO PROVIDE ENTERTAINMENT AND EDUCATION TO THE PUBLIC



## 5. SUSTAINABLE DEVELOPMENT

- GREEN AND SUSTAINABLE BUILDING DESIGNS



## 6. PRESERVING VICTORIA HARBOUR

- PRESERVATION OF HISTORICAL ARTEFACT AND OUR HARBOUR



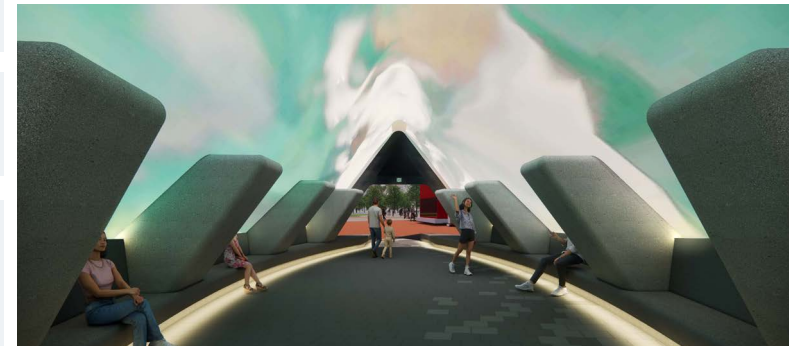
## 7. STAKEHOLDER ENGAGEMENT

- COLLECTING THE VIEWS OF THE PUBLIC



## 8. PROACTIVE HARBOUR ENHANCEMENT

- ANCHOR PLAZA TO ENHANCE HONG KONG URBAN DESIGN TO THE INTERNATIONAL COMMUNITY





# SUMMARY OF SUPPORT

**CULTURE, SPORTS AND TOURISM BUREAU**  
POLICY SUPPORT IN 2022

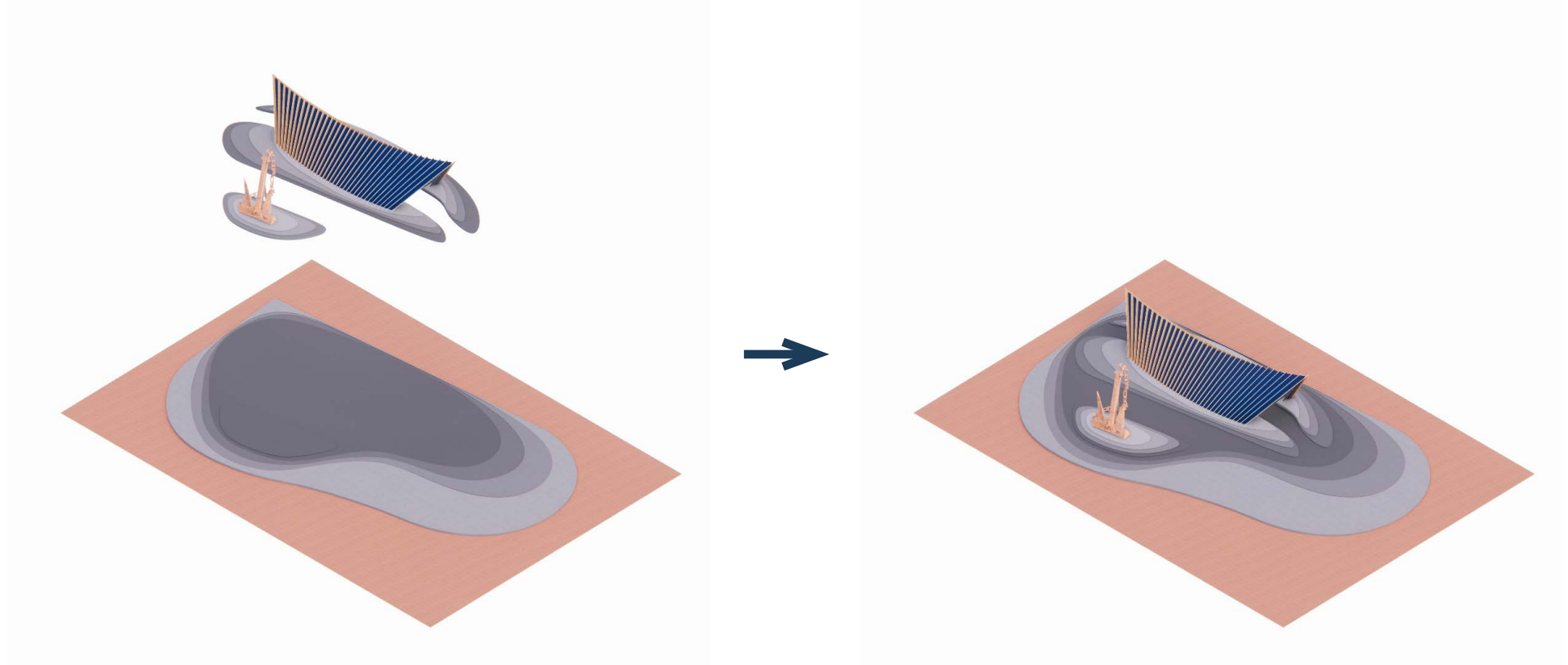
.

**HONG KONG JOCKEY CLUB**  
FINANCIAL SUPPORT



# PROGRAMME

OFF-SITE PREFABRICATION TO MINIMIZE ON-SITE INSTALLATION TIME



**SITE WORKS ANTICIPATED TO COMMENCE IN Q1 OF 2024  
AND COMPLETED BY Q4 OF 2024**





# CONCLUSION

THROUGH TELLING THE STORIES OF HONG KONG, THE SHIPS AND THE SEA, AN...



ICONIC

+



VIBRANT

+



INTERACTIVE

+



EDUCATIONAL

+



CULTURAL

+



INNOVATIVE

+



COMMUNITY



## HARBOURFRONT PLAZA EXPERIENCE



HONG KONG MARITIME MUSEUM ANCHOR PLAZA VISITOR CENTRE  
REINTERPRETING HISTORY, ART AND SCIENCE

ARTA  
ARCHITECTS