



「灣仔慶典主題區公眾休憩用地」工程計劃  
PUBLIC OPEN SPACE AT CELEBRATION PRECINCT WAN CHAI

海濱事務委員會會議 HARBOURFRONT COMMISSION MEETING 22 FEB 2023

# 城市設計研究大綱

## Urban Design Study Framework

「灣仔慶典主題區」是「灣仔北及北角海濱城市設計研究」中五個特色主題區之一。工程主要位於香港會議展覽中心外的海濱。  
 “Wan Chai Celebration Precinct” is one of five Character Precincts raised in the Urban Design Study for “Wan Chai North and North Point Harbourfront Areas”. Our project will be carried out at the harbourfront area outside Hong Kong Convention and Exhibition Centre.

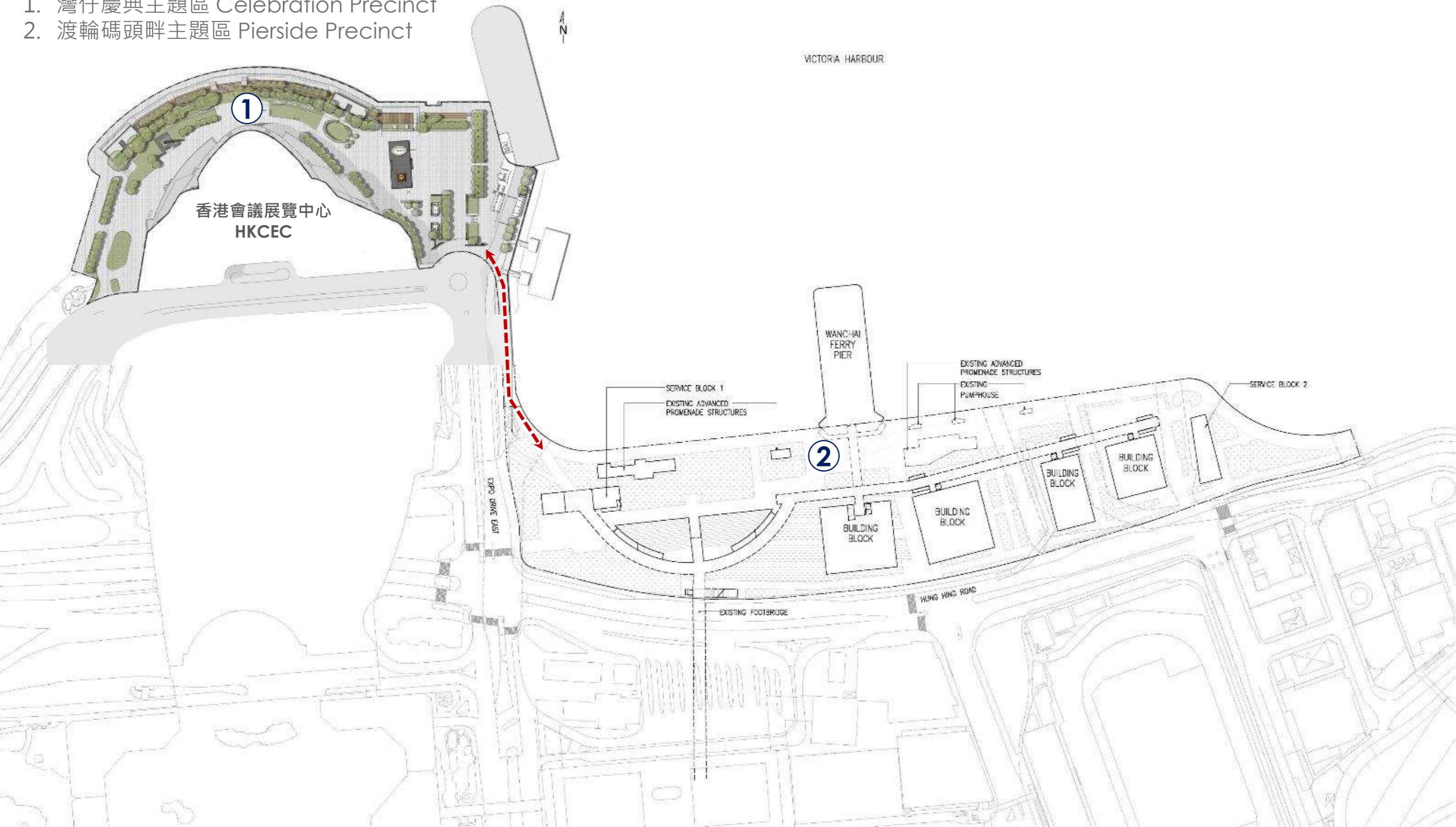


規劃署城市設計研究大綱 Urban Design Study Framework by PlanD

# 灣仔慶典主題區 及 渡輪碼頭畔主題區整體規劃圖平面圖

## Master Layout Plan of Celebration Precinct & Pierside Precinct

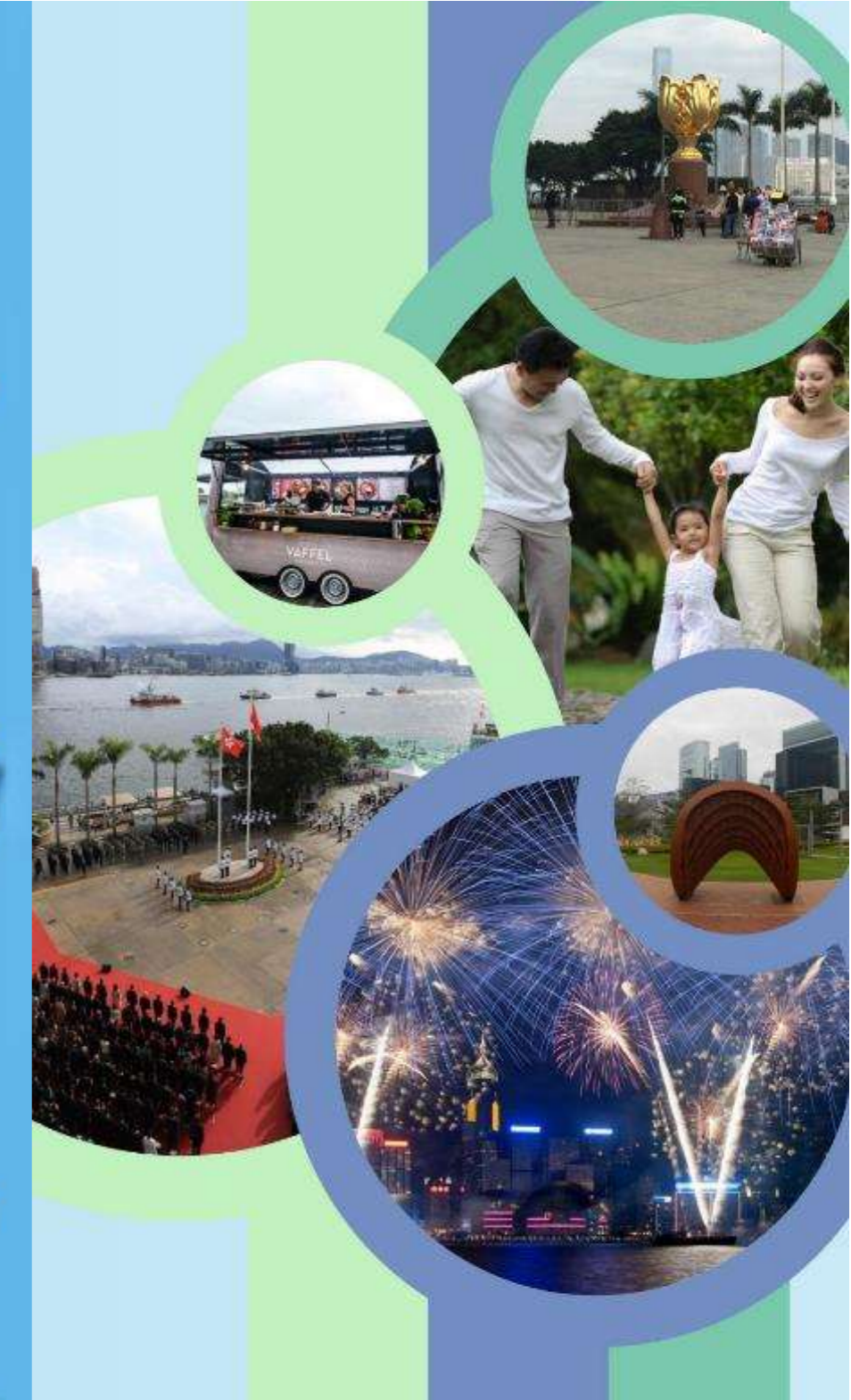
1. 灣仔慶典主題區 Celebration Precinct
2. 渡輪碼頭畔主題區 Pierside Precinct



# 空間特色

## Characters of Space

1. 慶典廣場 Celebration Plaza
2. 市景廣場 City View Plaza
3. 日落廣場 Sunset Plaza



規劃署城市設計研究大綱 Urban Design Study Framework by PlanD

# 現況及不足之處

## Current Condition and Deficiency

- 1. 缺乏慶典的空間 Left over space as a ceremony plaza
- 2. 過於荒蕪 及 缺乏正式廣場用作慶典儀式 Bare and informal plaza for the ceremony
- 3. 公眾缺乏豐富的休閒空間 Dry for public to enjoy
- 4. 紀念場所缺乏聯繫 Scattered monuments without linkage



1



2



3



4

# 現況及不足之處

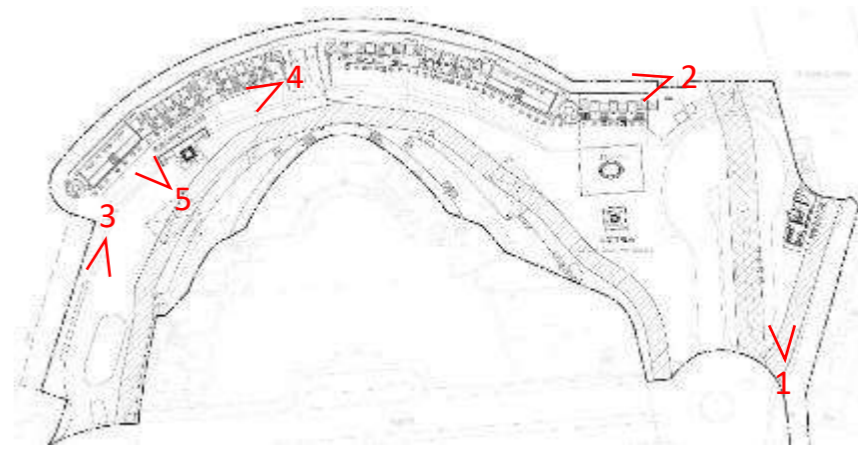
## Current Condition and Deficiency



1. 博覽道東公共廁所  
Expo Drive East Public Toilet



2. 灣仔臨時長廊  
Wan Chai Temporary Promenade



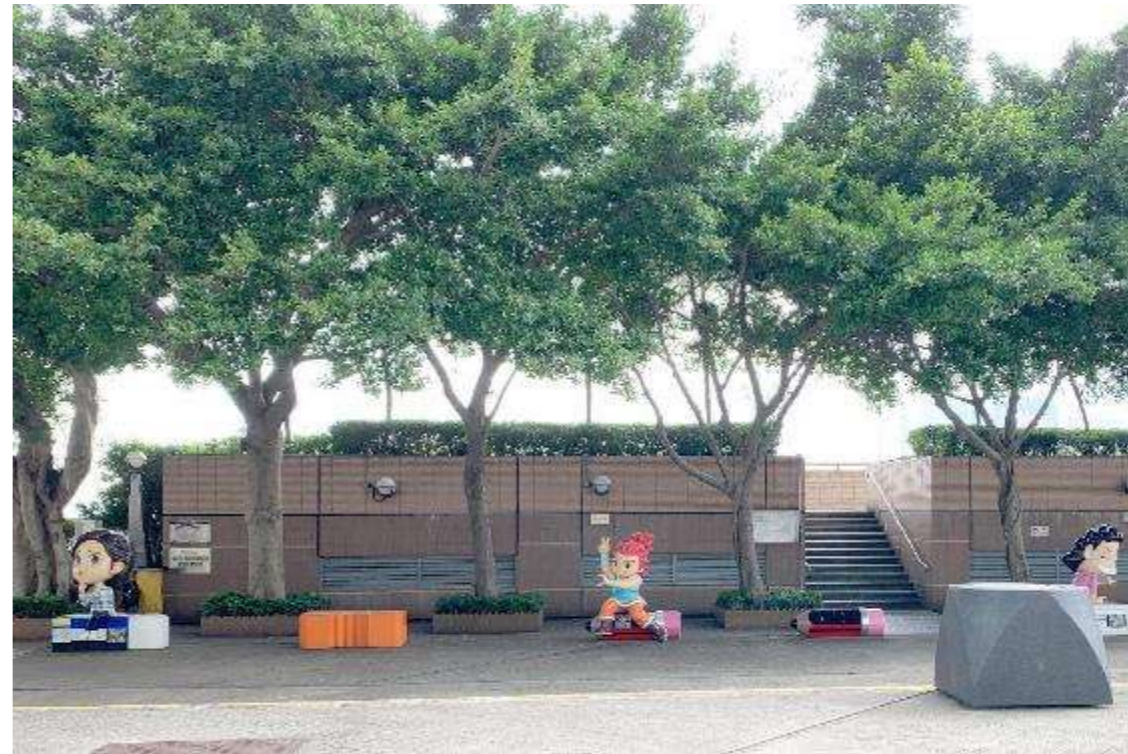
- Utility structures surrounding monuments and promenade
- Narrow pavement with limited shading and poor linkages
- Bare land with low opportunity for leisure use and enjoyment



3. 西面入口  
West entrance

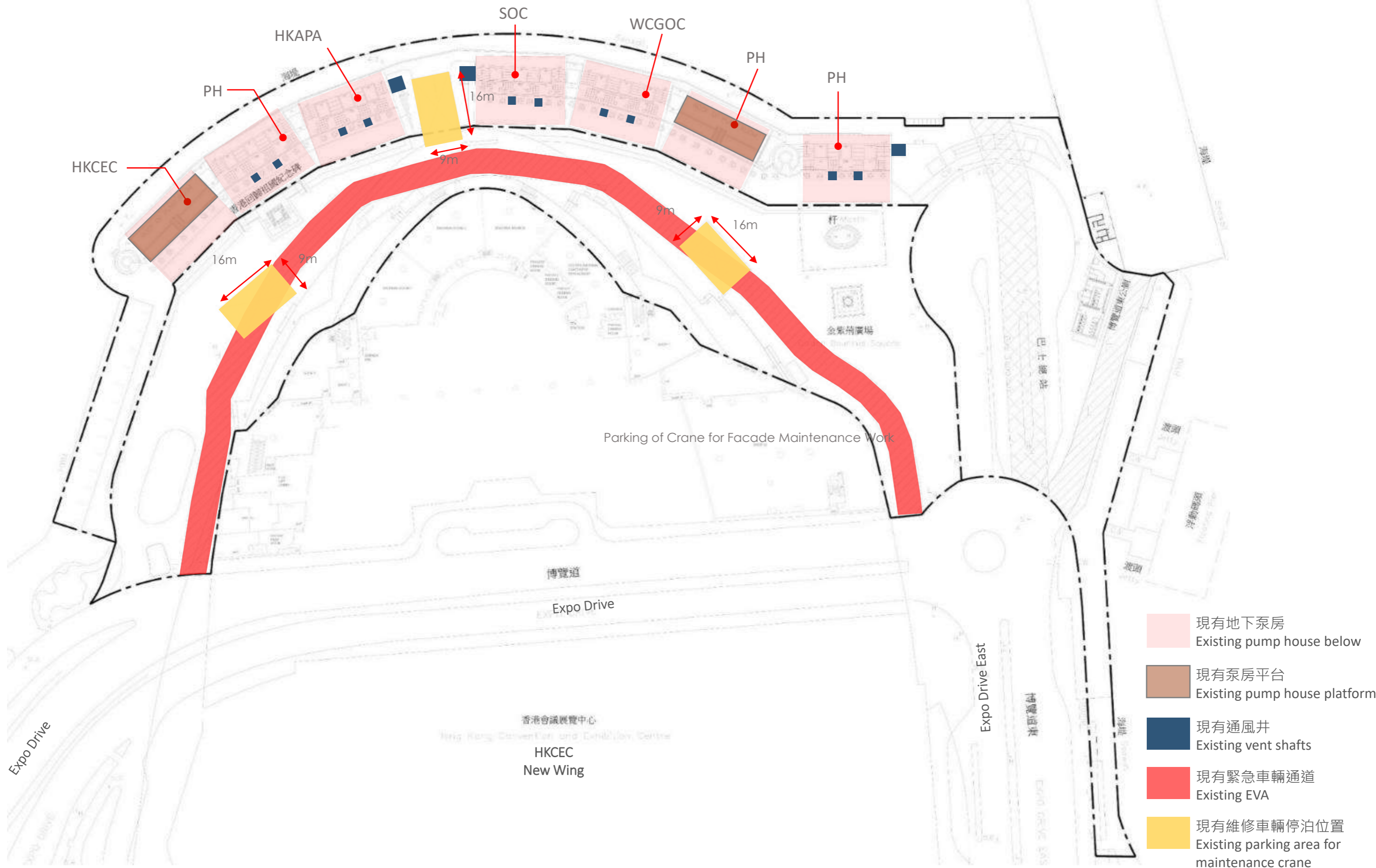


4. 回歸紀念碑  
Reunification Monument



5. 現場泵房  
Existing pump rooms

# 場地限制 Site Constraints



- 現有地下泵房  
Existing pump house below
- 現有泵房平台  
Existing pump house platform
- 現有通風井  
Existing vent shafts
- 現有緊急車輛通道  
Existing EVA
- 現有維修車輛停泊位置  
Existing parking area for maintenance crane



# 設計意向

## Design Objectives

1. 一個充滿莊重感的慶典廣場 Ceremony-approach to the plaza (a plaza with dignity)
2. 聯繫現有的紀念空間 To link all monuments
3. 一個四季合宜的花園空間，提供適合夏天遮蔭的行人步道 A garden for all and works in summer, with independent shaded route to enjoy
4. 創造更多活動的可能性，如適合戶外用餐 Seating out dining





# 設計意向

## Design Objectives

1. 一個充滿莊重感的慶典廣場 Ceremony-approach to the plaza (a plaza with dignity)
2. 聯繫現有的紀念空間 To link all monuments
3. 一個四季合宜的花園空間，提供適合夏天遮蔭的行人步道 A garden for all and works in summer, with independent shaded route to enjoy
4. 創造更多活動的可能性，如適合戶外用餐 Seating out dining



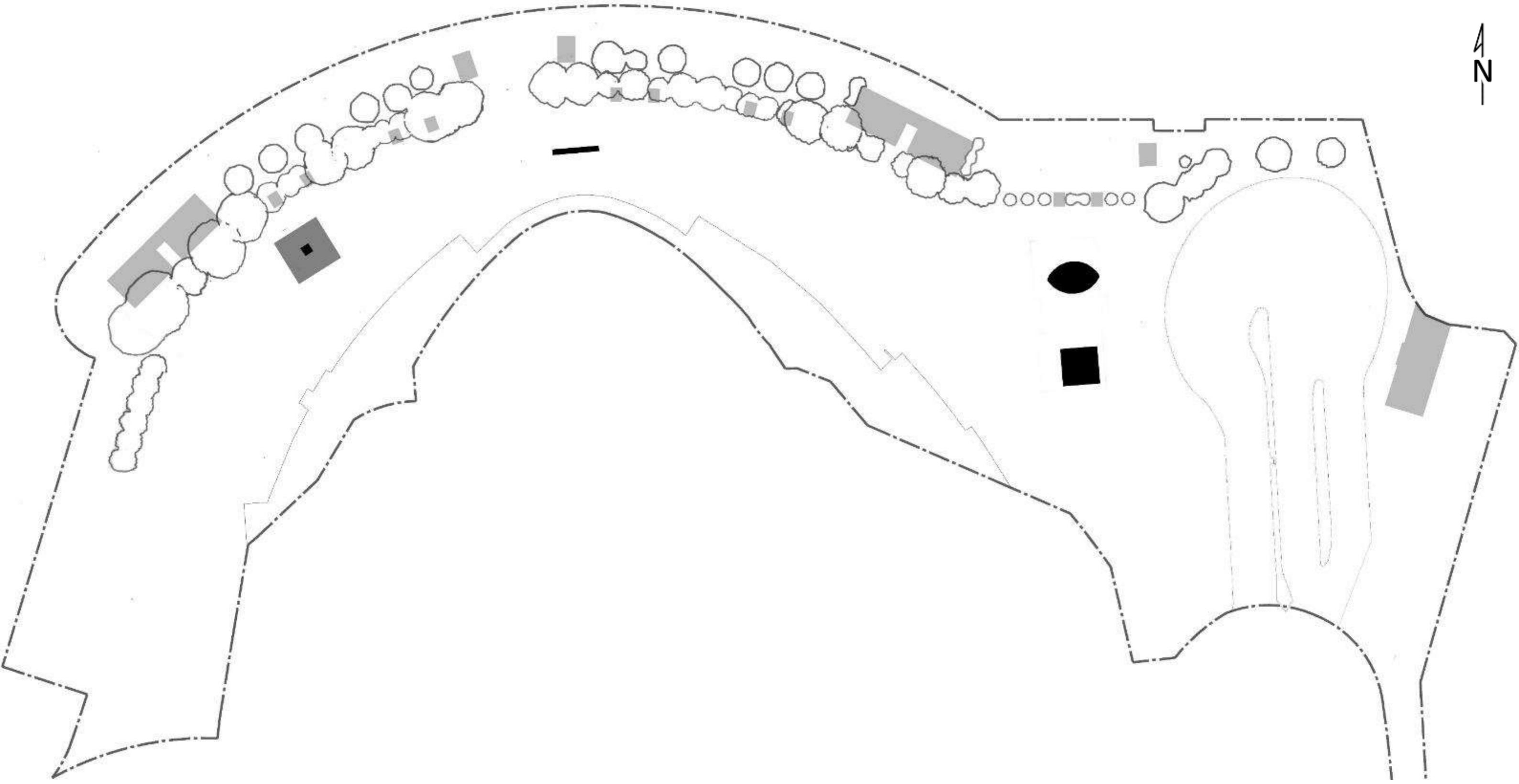
# 設計意向

## Design Objectives

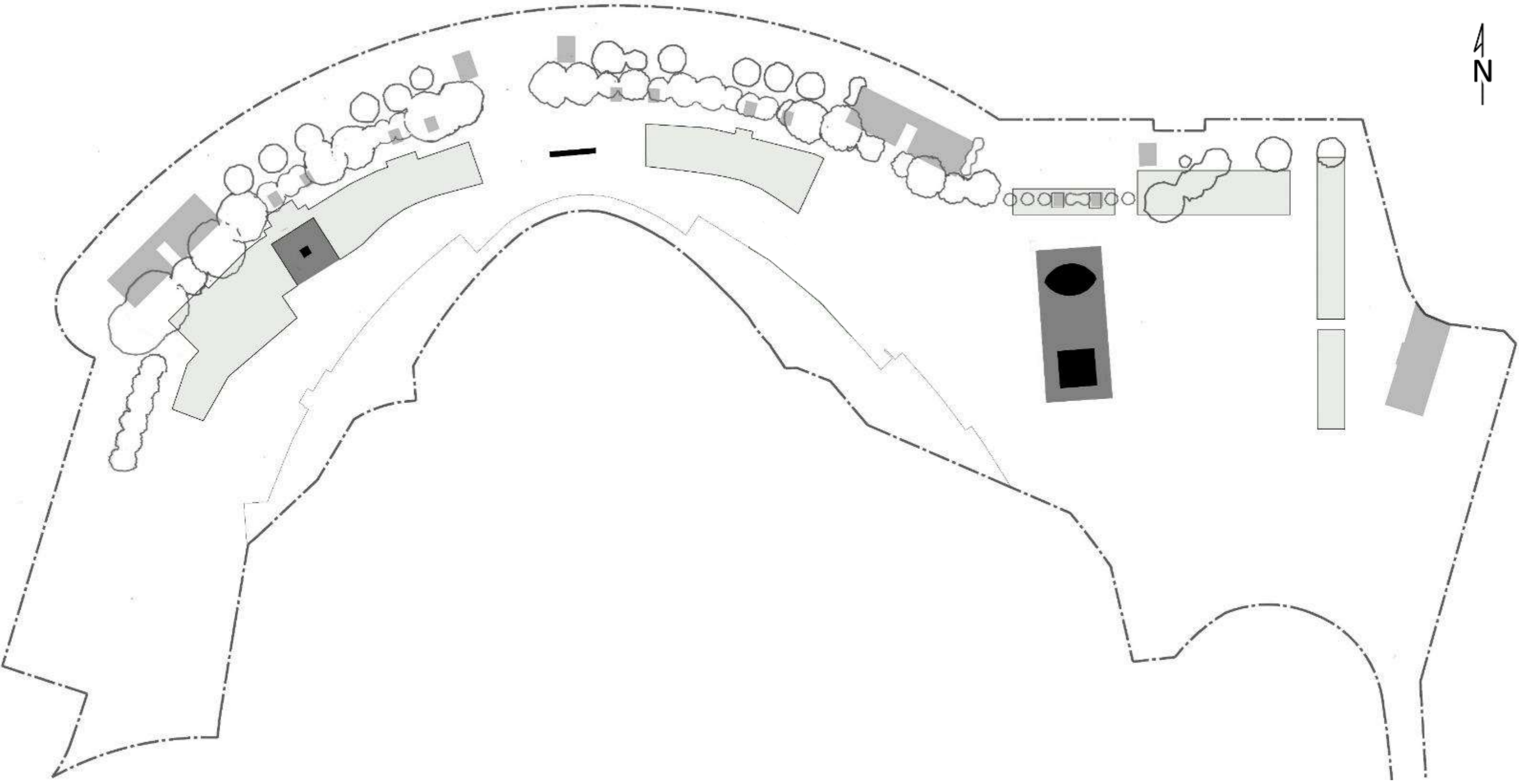
1. 一個充滿莊重感的慶典廣場 Ceremony-approach to the plaza (a plaza with dignity)
2. 一個四季合宜的花園空間，提供適合夏天遮蔭的行人步道 A garden for all and works in summer, with independent shaded route to enjoy
3. 聯繫現有的紀念空間 To link all monuments
4. 創造更多活動的可能性，如適合戶外用餐 Seating out dining possibility



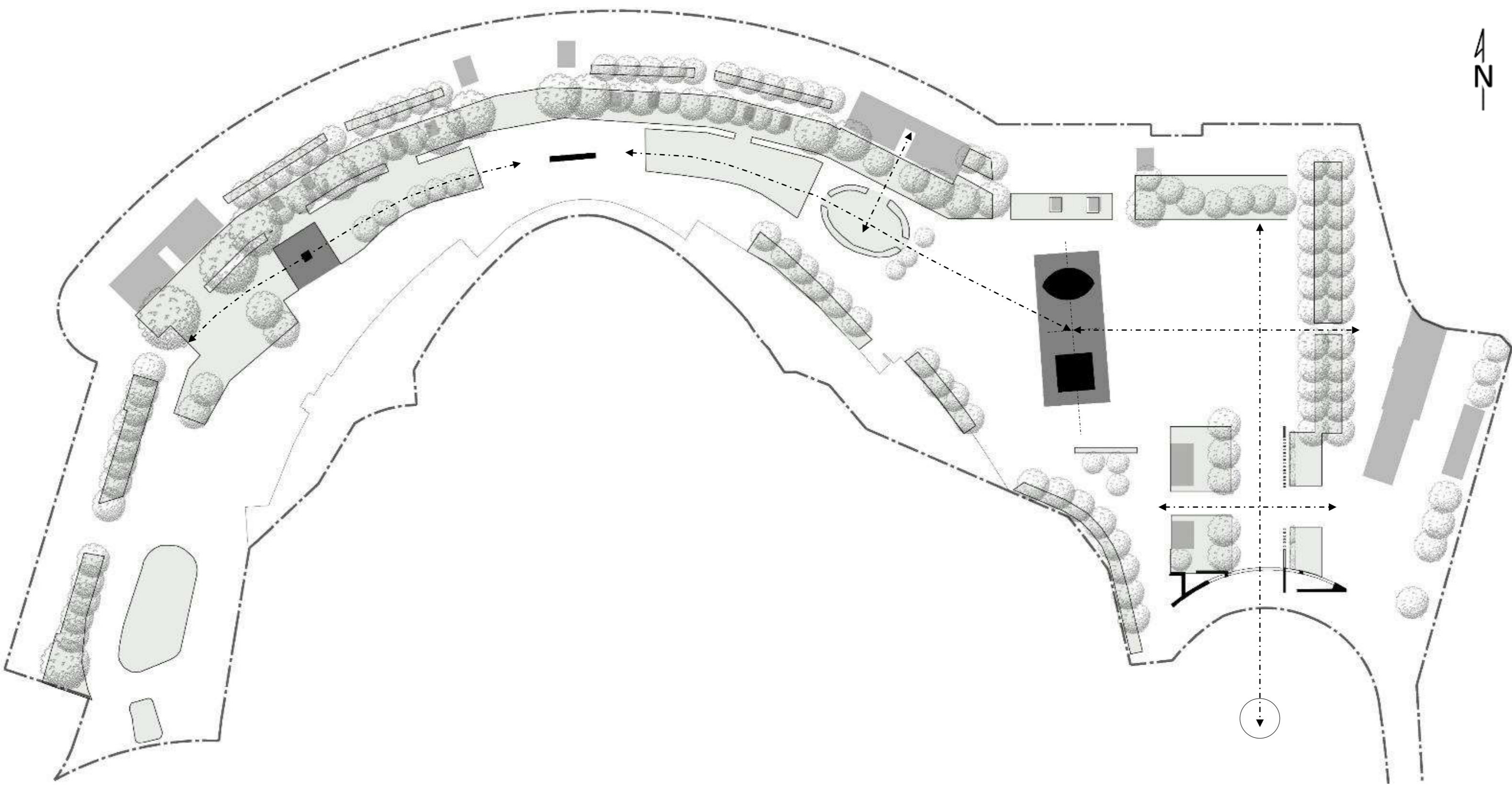
# 設計策略 Design Strategy



# 設計策略 Design Strategy



# 設計策略 Design Strategy



# 主入口 / 慶典廣場 Main Entrance / Celebration Plaza

看海觀景台 / 可座式梯級  
Viewing deck / step seating for  
harbour view

形成慶典空間及升高儀式平台  
增加莊重感  
Formation of celebration  
plaza and raised platform  
increase sense of dignity

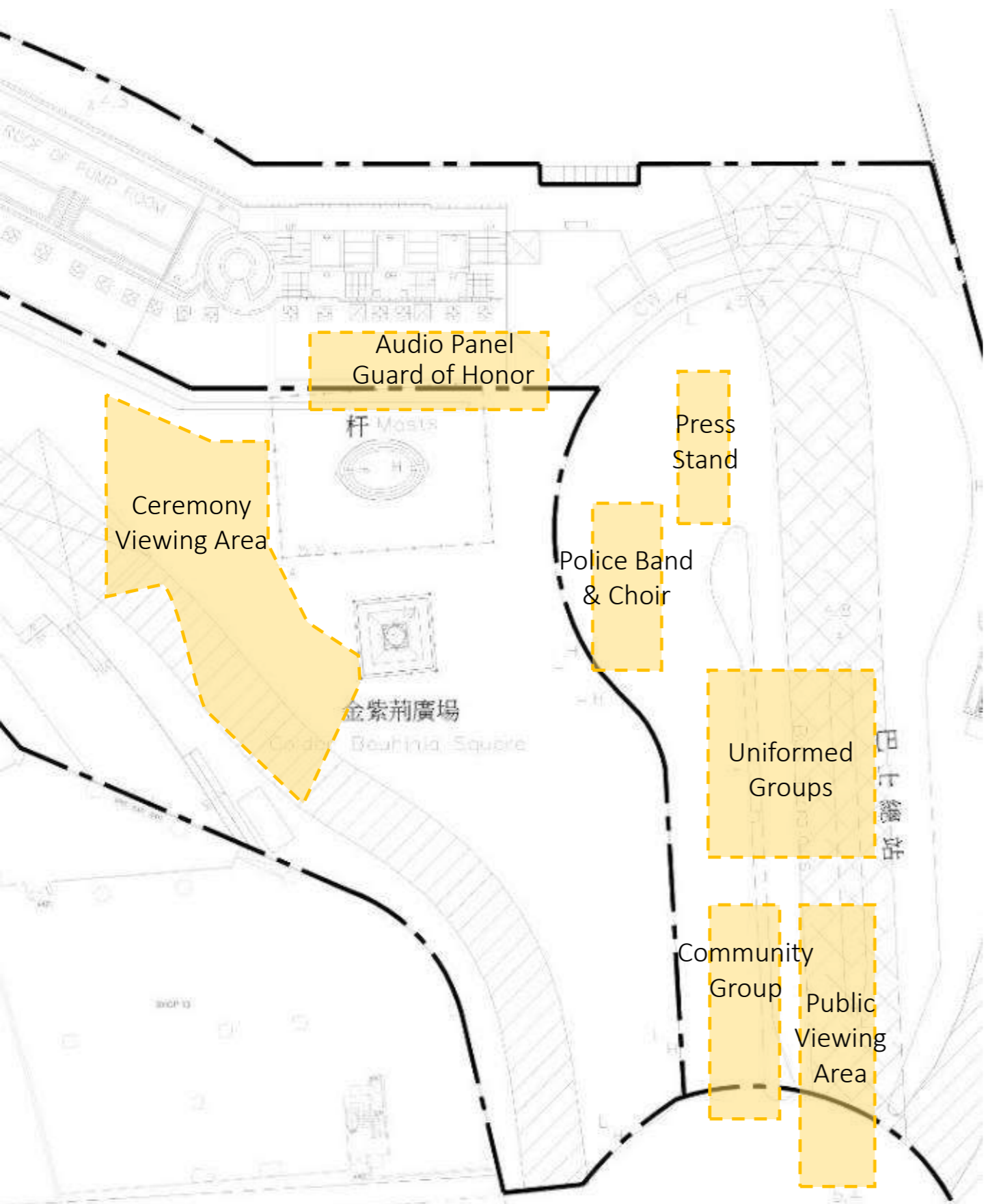
穿過紀念空間入口處的林蔭步道  
使用者能夠充分洗滌心靈  
Entrance with green corridor  
calms the soul and directs  
people towards the monument



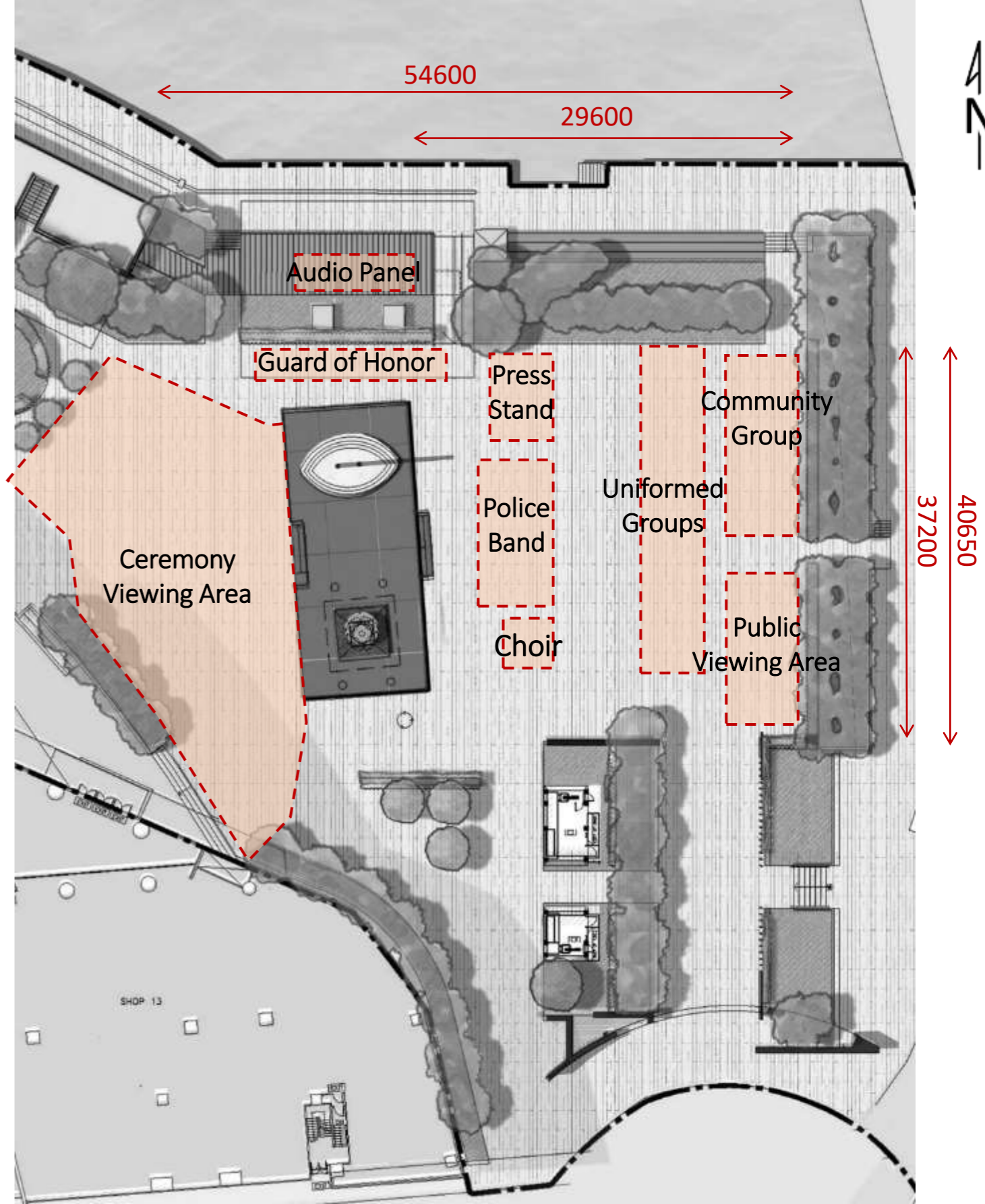
自然植物屏障遮蓋不雅觀的建築  
立面  
Natural barrier to screen off  
unwanted building facade

# 慶典廣場儀式佈置

## Ceremonial Layout at Celebration Plaza (Chosen by Stakeholders)



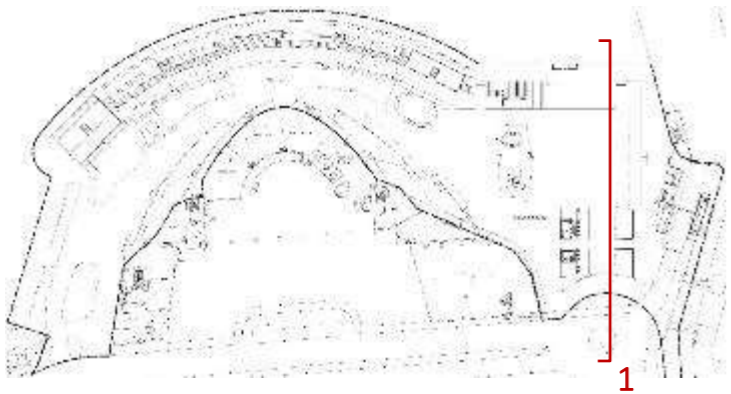
BEFORE



AFTER

# 建議設計 Proposed Design

剖面1 Section 1



入口 Main Entrance | 休閒的樹木長廊 Relaxing Tree Promenade | 慶典廣場 Celebration Plaza | 連續的草坪及樹木 Continuous Lawn & Trees | 共享區域 Potential Share-used Zone



# 建議設計 Proposed Design

剖面 2 Section 2



# 主入口區

## Main Entrance Area



莊重的慶典廣場設計 Ceremonial Setting

# 主入口區

## Main Entrance Area



凝造輕鬆氣氛的樹木長廊 Relaxing Tree Promenade for Public

# 慶典廣場 Celebration Plaza



高大樹木形成正式的廣場空間 Continuous Tree Backdrop

# 慶典廣場 Celebration Plaza



聚焦的慶典平台設計 Unifying Plaza Space with Celebration Platform

# 建議配套設施

## Proposed Ancillary Facilities



### 保留現存博覽道東公共廁所配套設施

#### Existing Toilet Block to be maintained

- 女洗手間 Female Toilet
- 男洗手間 Male Toilet
- 無障礙洗手間 Accessible Toilet
- 泵房 Pump Room

### 建議配套設施 Proposed Ancillary Facilities

- 無性別洗手間 Universal Toilet
- 育嬰間 Babycare Room

### 建議配套設施 Proposed Ancillary Facilities

- 管理處 Management office
- 保安室 Security guard room
- 儲藏室 Store room
- 休息室 Rest room

### 建議配套設施 Proposed Ancillary Facilities

- 儲藏室 Store room
- 休息室和更衣室 Rest room and changing room
- 垃圾收集站 Refuse collection point

### 建議配套設施 Proposed Ancillary Facilities

- 小食亭 Kiosk for Light Refreshment
- 泵房 Pump room
- 水錶房 Water tank
- 電錶櫃 Meter cabinet

# 共享區域 Share-used Zone



輕鬆的共享區域 Relaxing Share-used Zone

# 市景廣場及日落廣場

## City View Plaza and Sunset Plaza

梯級座位  
Steps Seating

連續草坪  
Continuous Lawn

觀景台  
Viewing Deck

升高的草坪  
Elevated Lawn

日落廣場  
Sunset Plaza

貴賓上落區  
VIP Drop-off



香港會議展覽中心旗桿  
HKCEC Flag Pole

回歸紀念碑  
Reunification Monument



# 建議設計

## Proposed Design

剖面3 Section 3



共享區域  
Potential Share-used Zone

連續的草坪  
Continuous Lawn

開放的草坪  
Open Lawn

緊急車輛通道  
EVA / pedestrian walkway

香港會議展覽中心  
HKCEC

# 草坪設計 Lawn Design



草坪設計提供更多休閒活動的空間 Open Lawn Design allow Space for More Leisure Activities

# 草坪設計 Lawn Design



草坪設計提供更多休閒活動的空間 Open Lawn Design allow Space for More Leisure Activities

# 建議整體規劃平面圖

## Proposed Master Layout Plan



# 建議整體規劃平面圖

## Proposed Master Layout Plan



- ▲ 主入口 Main Entrance
- ▲ 次入口 Side Entrance
- ▲ 單車徑 Bicycle track
- ▲ 無障礙通道 BFA

# 建議園景設計

## Proposed Soft Landscape Design



- Legends:
- 現有的樹木 Existing Trees
  - 新種的樹木 New Trees

○ *Osmanthus fragrans* (桂花)

- 常綠植物 Evergreen Plant
- 花期 Flowering Period: 10 - 5



○ *Elaeocarpus apiculatus* (尖葉杜英)

- 常綠植物 Evergreen Plant
- 花期 Flowering Period: 8 - 9
- 中抗風性 Moderate resistance to wind



○ *Cinnamomum camphora* (樟樹)

- 常綠植物 Evergreen Plant
- 高抗風性 Strong resistance to wind



○ *Nageia nagi* (竹柏)

- 常綠植物 Evergreen Plant
- 高抗風性 Strong resistance to wind



○ *Pongamia pinnata* (水黃皮)

- 常綠植物 Evergreen Plant
- 花期 Flowering Period: 5 - 6
- 高抗風性 Strong resistance to wind



### Shrub



*Ficus microcarpa var. crassifolia* (火山榕)



*Murraya paniculata* (九里香)  
花期 Flowering Period: 4 - 8



*Fagraea ceilanica* (灰莉)  
花期 Flowering Period: 4 - 8



*Cuphea hyssopifolia* (細葉雪茄花)  
花期 Flowering Period: 1 - 12



*Cuphea hyssopifolia* (細葉雪茄花)  
花期 Flowering Period: 7 - 9



*Brunfelsia calycina* (大鴛鴦茉莉)  
花期 Flowering Period: 2 - 4, 10 - 11

### Climber



*Petrea volubilis* (藍花藤)

### Bamboo



*Phyllostachys reticulata* (桂竹 (剛竹))

### Groundcover



*Axonopus Compressus* (大葉草)



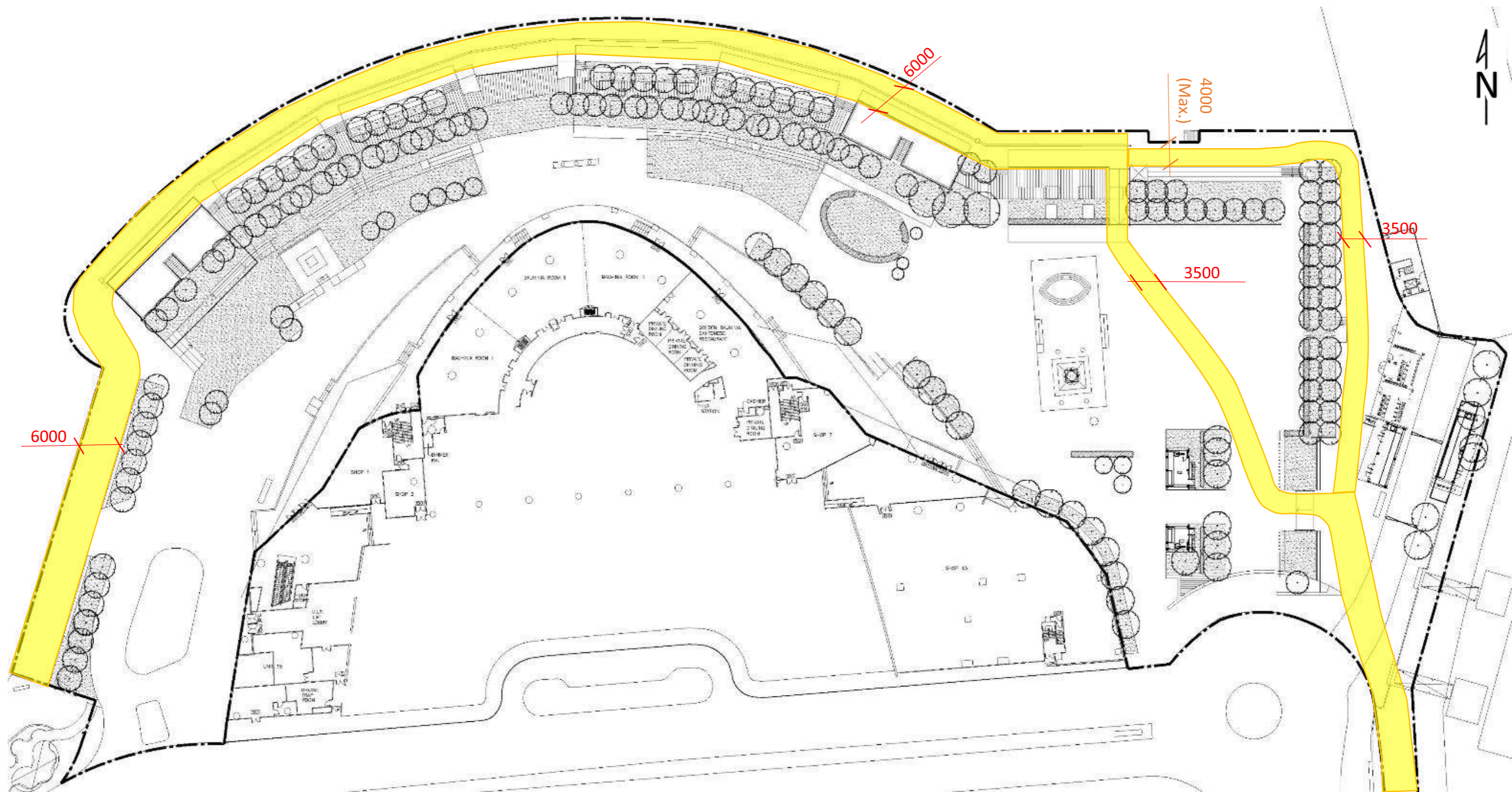
*Paspalum vaginatum* (海雀稗)

# 有可能性的共享區域 (選項 1)

## Potential Share-used Zone (Option 1)

一條有可能性的6米圍繞海濱的雙向共享區域並且在東面分開成3.5米獨立的共享區域。

A potential two way share-used zone along the harbourfront area with 3.5m wide share-used split path at the East side.

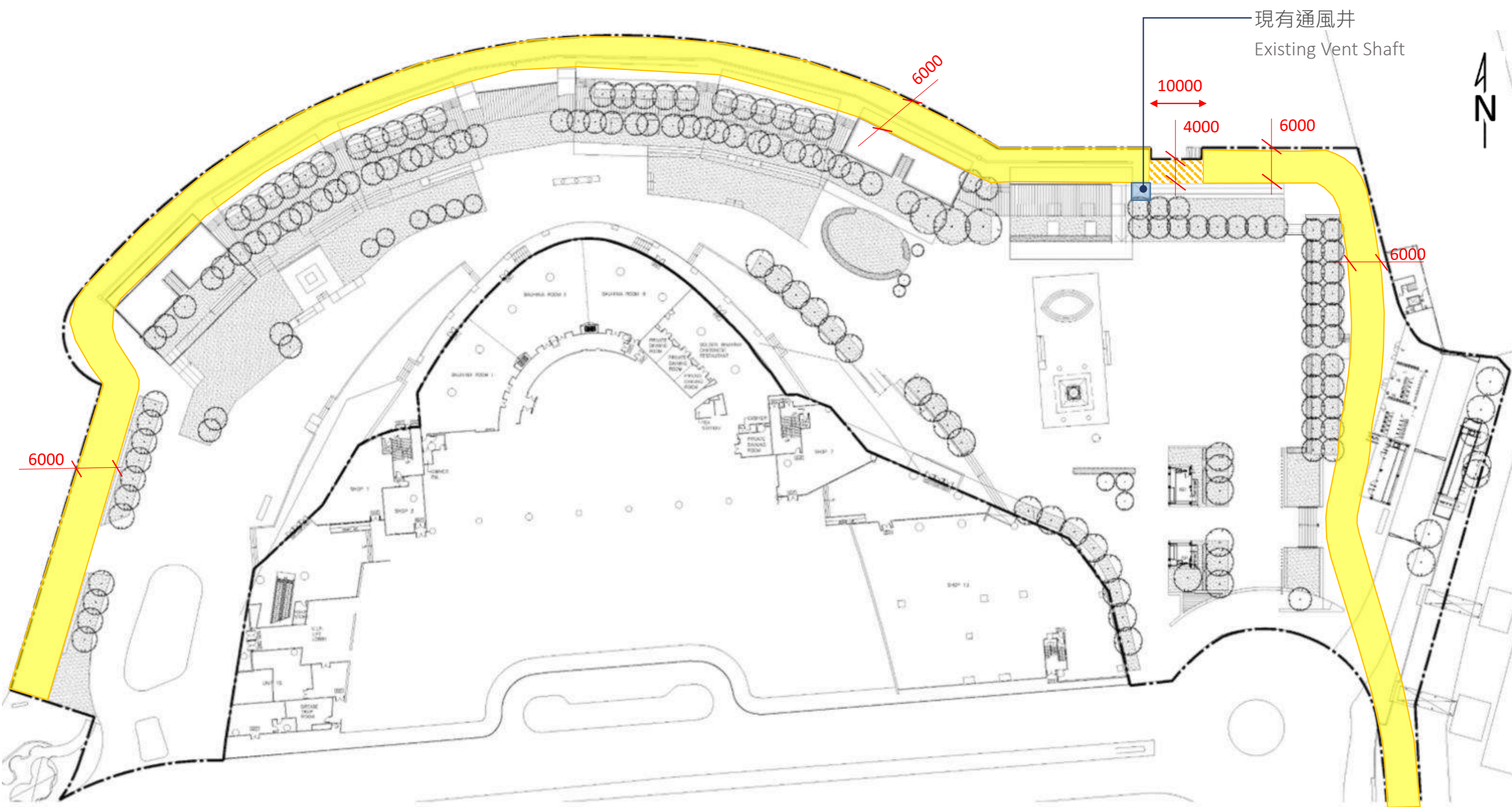


# 有可能性的共享區域 (選項 2)

## Potential Share-used Zone (Option 2)

一條有可能性的6米圍繞海濱的雙向共享區域其中有一段4米寬(10米長)的過渡區域。

A potential two way share-used zone along the harbourfront area with a 4m wide area (10m in length) near the existing pier steps.





# 建議特色配套設施

## Proposed Feature Ancillary Facilities



欄杆設計附有飲品架及手機支架功能 (參考圖片)  
Railing design with drink holder and mobile phone stand function (Ref. Image)



特色桌椅設計 (參考圖片)  
Feature seating with table / shelter (Ref. Image)



欄杆設計附有掛鉤功能 (參考圖片)  
Railing design with hook function (Ref. Image)



飲水機 (參考圖片)  
Drinking Fountain (Ref. Image)

# 建議燈光設計

## Proposed Lighting Design



海濱燈光效果 (參考圖片)  
Promenade lighting effect (Ref. Image)



梯級座位燈光效果(參考圖片)  
Lighting effect of step seating (Ref. Image)



藝術燈光效果 (參考圖片)  
Art lighting effect (Ref. Image)



燈柱 (參考圖片)  
Bollard light (Ref. Image)



平台燈光效果(參考圖片)  
Platform lighting effect (Ref. Image)

# 建議主題性指示牌設計

## Proposed Thematic Signage Design



渡輪碼頭畔主題區(參考圖片)  
Pierside Precinct (Ref. Image)



指示牌設計(參考圖片)  
Signage Design (Ref. Image)

# 建議低碳及智能設計

## Proposed Low-carbon & Smart Design Features



再生能源燈柱 (參考圖片)  
Renewable energy lamp post (Ref. Image)

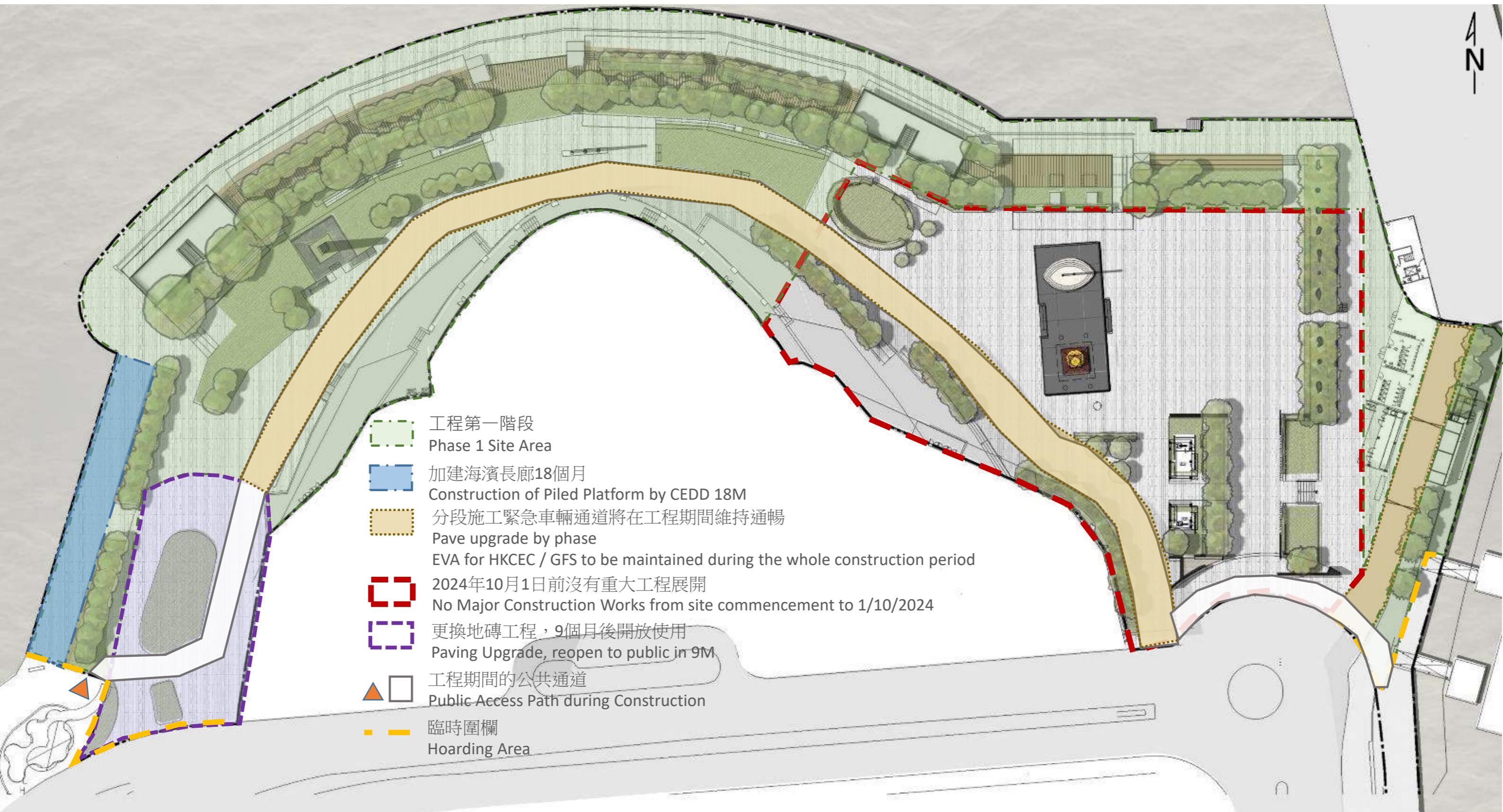


智能元素只供參考 (參考圖片)  
Smart features for reference only (Ref. Image)

安全和監控系統 (參考圖片)  
Security and Surveillance system (Ref. Image)

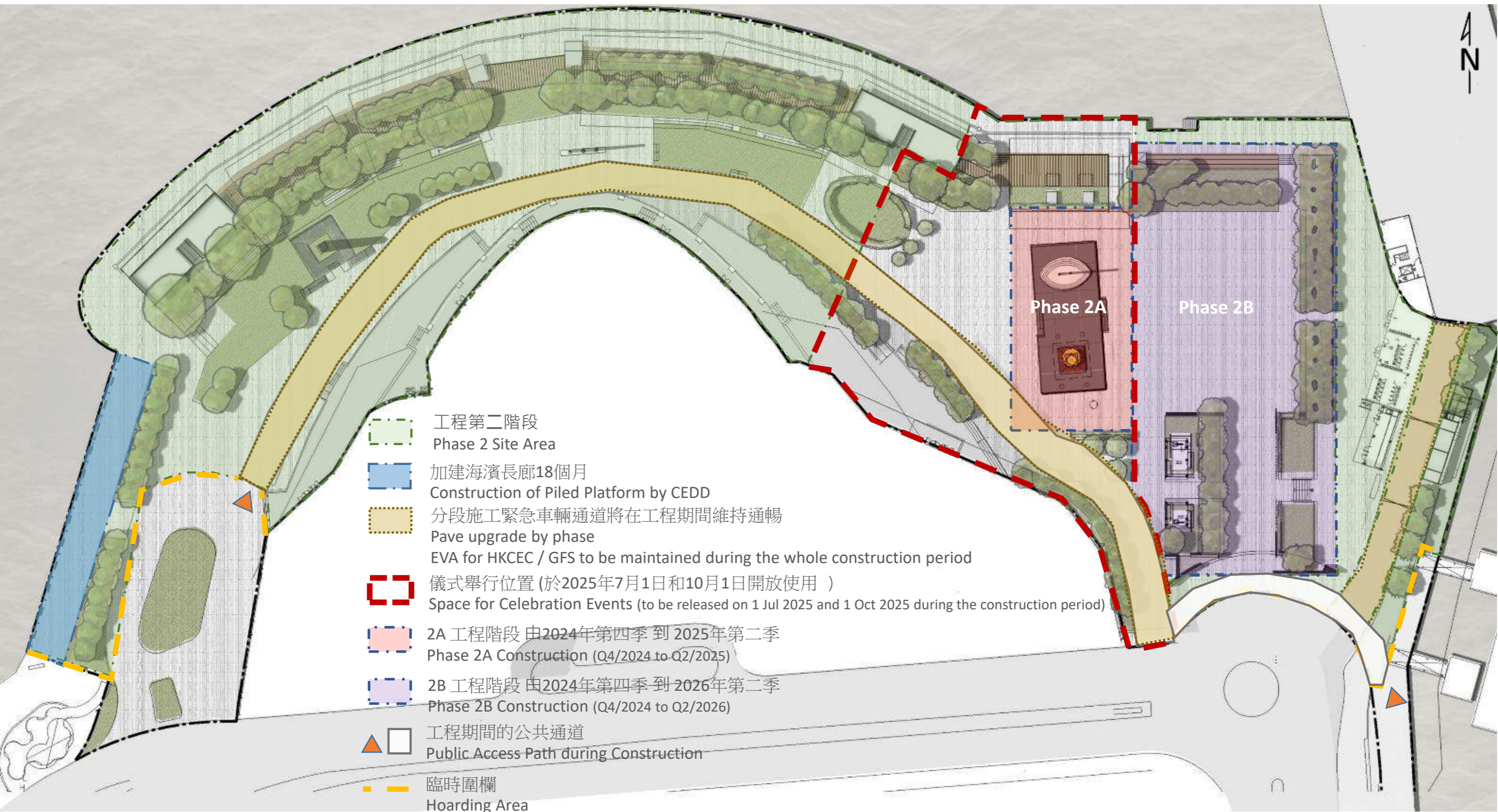
# 施工階段安排 - 第一階段(Q3/2024 to Q4/2024)

## Phasing Arrangement – Phase 1 (Q3/2024 to Q4/2024)



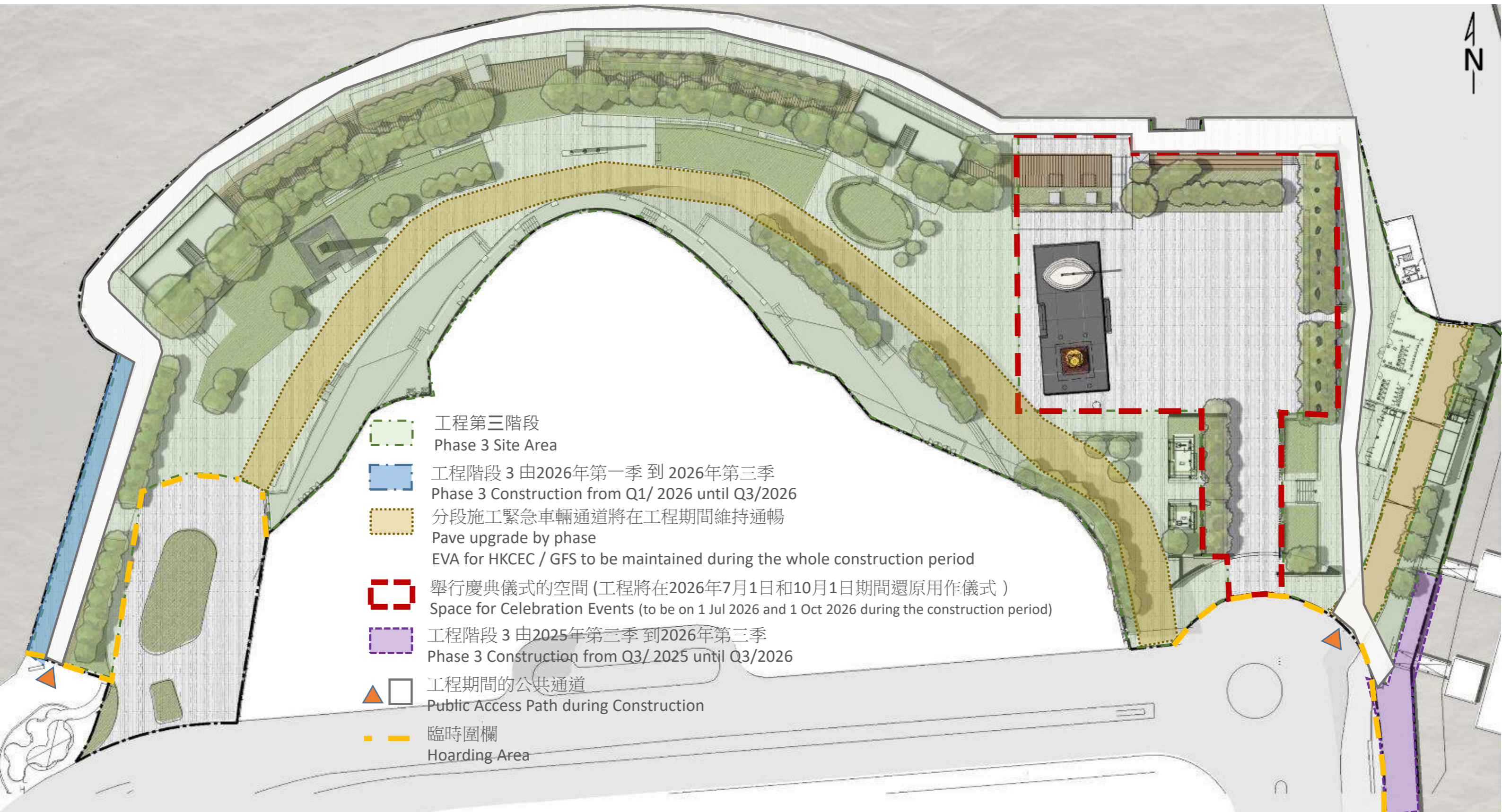
# 施工階段安排 - 第二階段(Q4/2024 to Q2/2026)

## Phasing Arrangement – Phase 2 (Q4/2024 to Q2/2026)

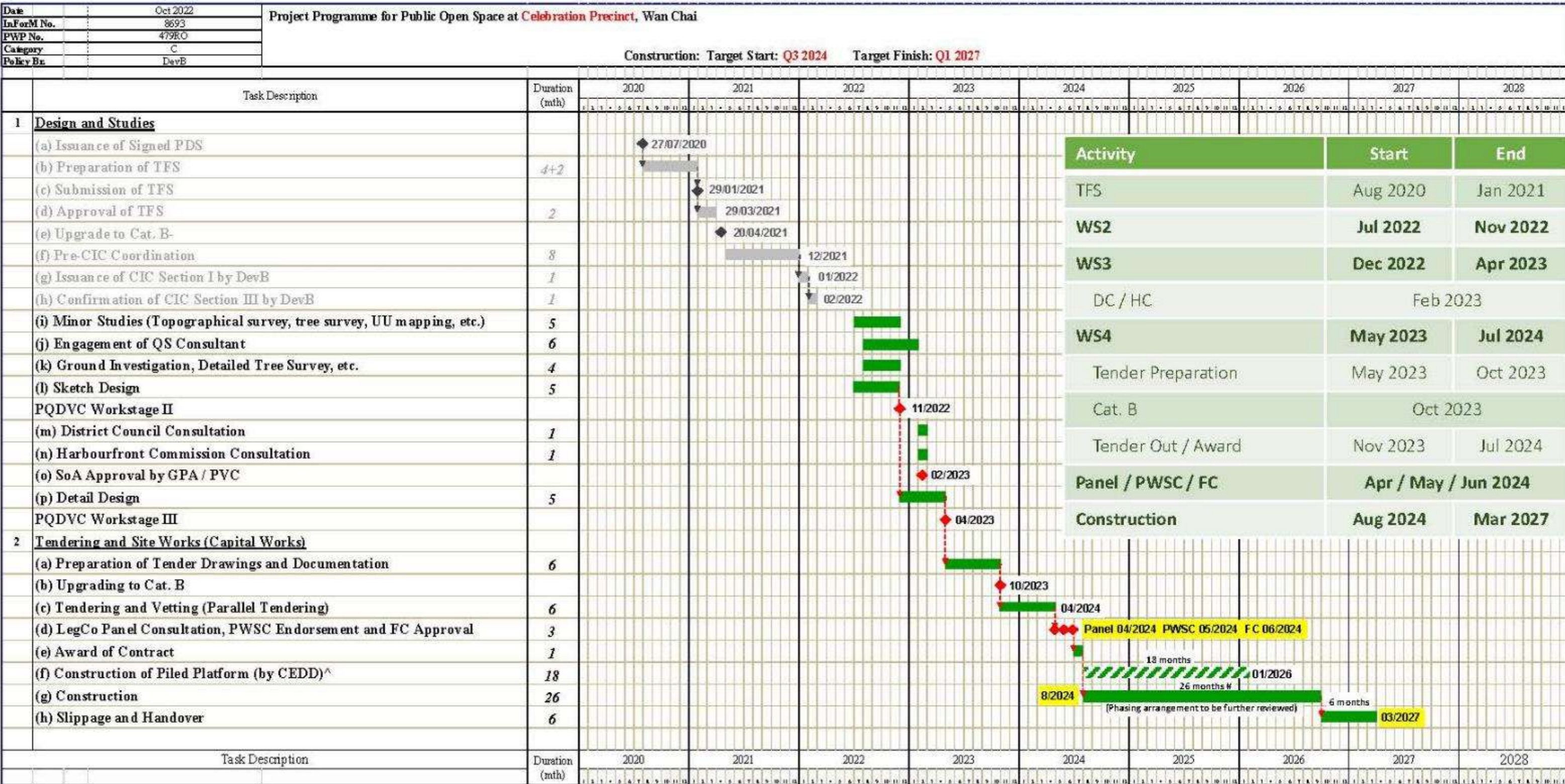


# 施工階段安排 - 第三階段(Q3/2025 to Q3/2026)

## Phasing Arrangement – Phase 3 (Q3/2025 to Q3/2026)



# 工程規劃 Construction Programme





# 附近旅遊車停泊安排

## Nearby Coach Parking Arrangement

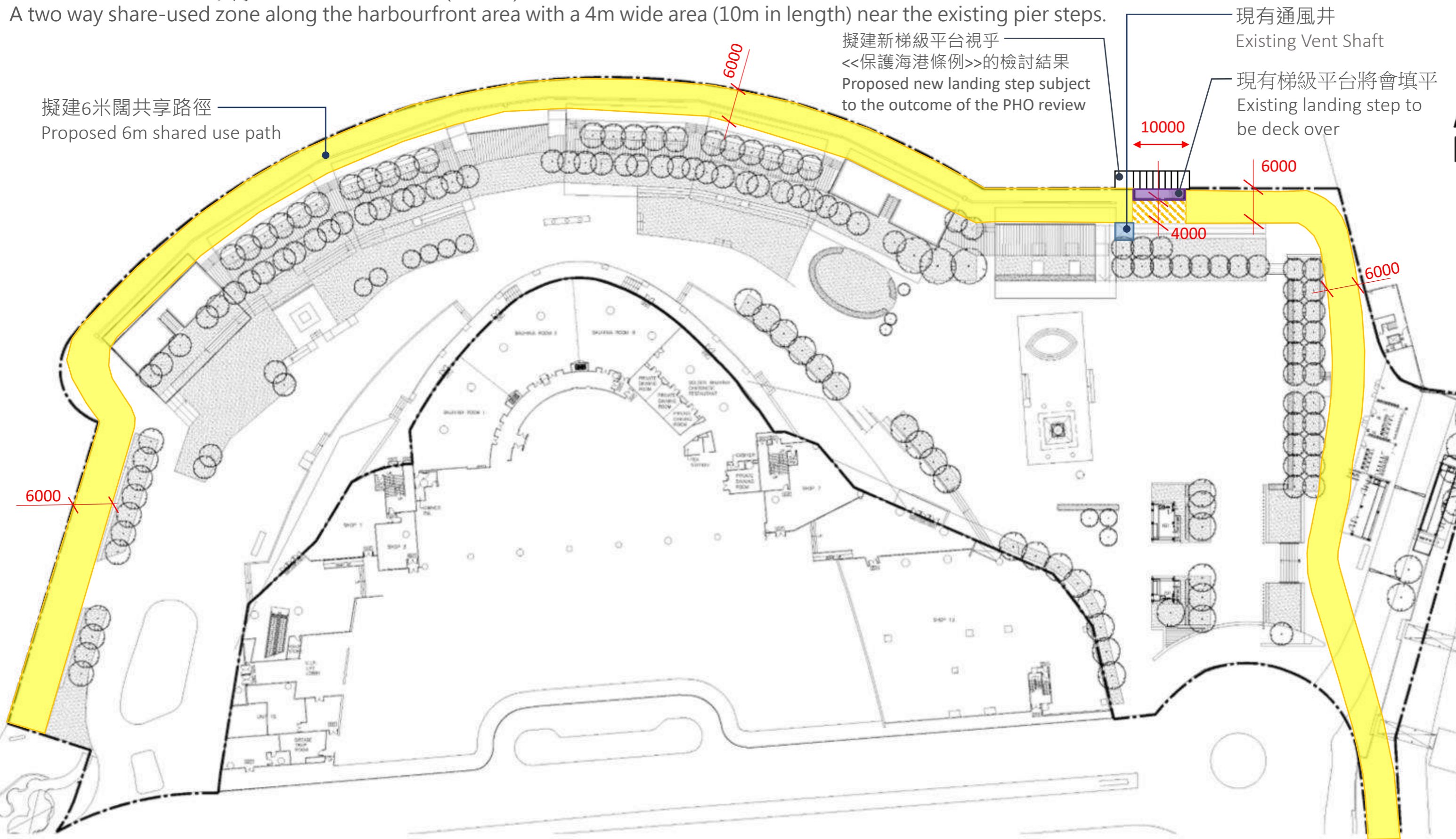


# 《保護海港條例》檢討後可能進行的優化工程：共享區域 (選項 2)

## Possible enhancement works subject to outcome of PHO review: Share-used Zone (Option 2)

一條6米圍繞海濱的雙向共享區域其中有一段4米寬(10米長)的過渡區域。

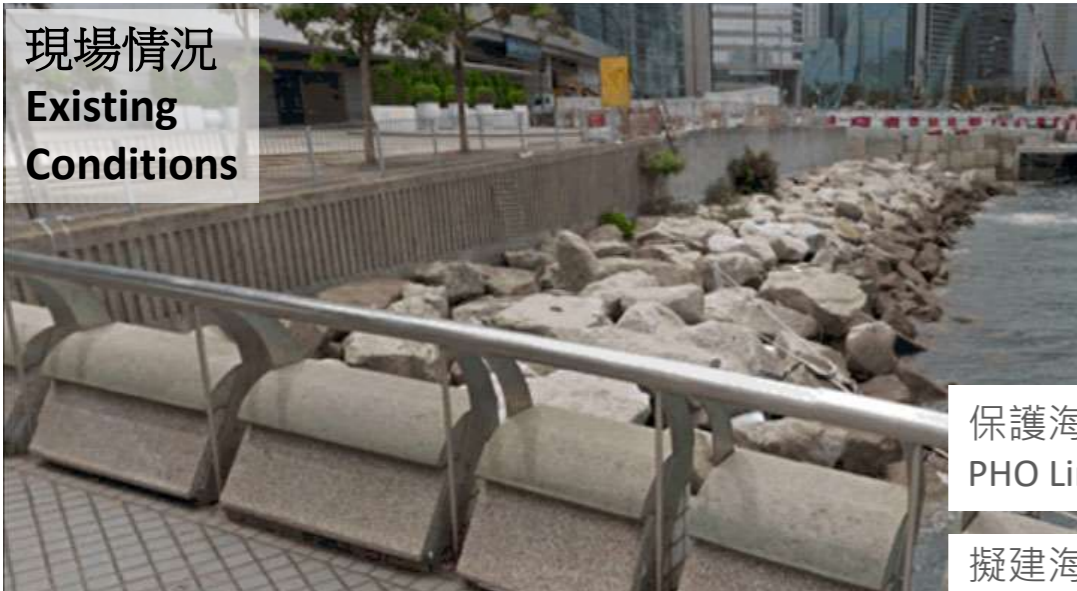
A two way share-used zone along the harbourfront area with a 4m wide area (10m in length) near the existing pier steps.



# 《保護海港條例》檢討後可能進行的優化工程：海岸堤階

## Possible enhancement works subject to outcome of PHO review: Harbour Steps

現場情況  
Existing  
Conditions



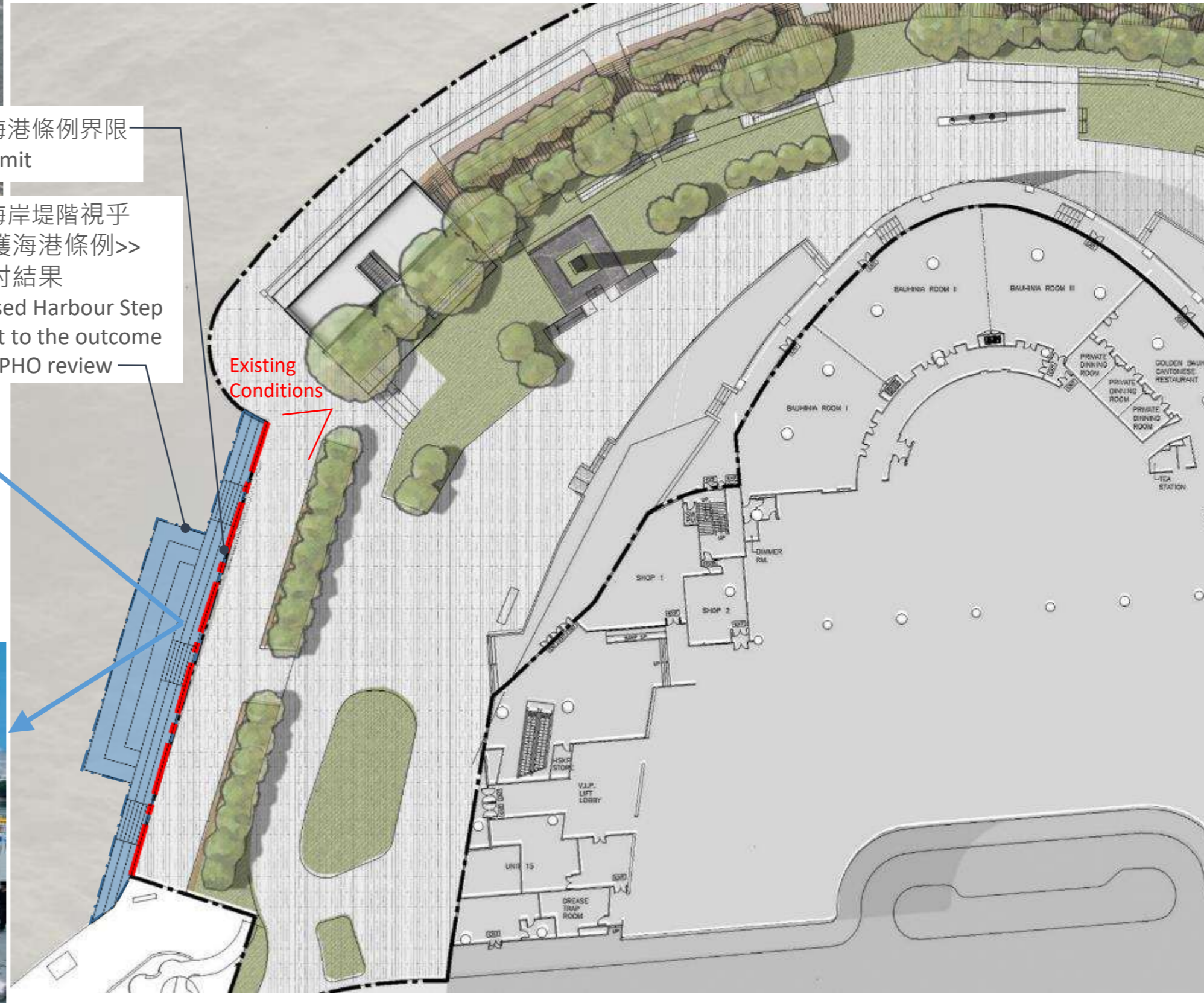
保護海港條例界限  
PHO Limit

擬建海岸堤階視乎  
<<保護海港條例>>  
的檢討結果  
Proposed Harbour Step  
subject to the outcome  
of the PHO review

海岸堤階 Harbour Steps



海岸堤階 Harbour Steps



Existing  
Conditions