

Task Force on Harbourfront Developments on Hong Kong Island

For discussion
on 10 February 2015

TFHK/01/2015

Urban Design Study for the Wan Chai North and North Point Harbourfront Areas

PURPOSE

This paper updates Members on the current progress of the Urban Design Study for the Wan Chai North and North Point Harbourfront Areas (UDS).

BACKGROUND

2. On 18 February 2014, Members were consulted on the background, study objectives and proposed scope of the UDS. The Planning Department (PlanD) noted Members' support in proceeding with the UDS as well as the comments, views and issues raised in respect of details of the study.

3. Based on Members' views, PlanD had refined the detailed study requirements and the study brief. In mid-2014, PlanD launched a selection exercise for consultants. AECOM Asia Company Limited was selected as the Consultant. The UDS was then commenced on 21 January 2015.

BROAD STUDY APPROACH

4. The overall objective of the UDS is to work out a sustainable urban design framework and to formulate comprehensive planning and design briefs for the Key Sites (**Plan 1**), with a view to guiding the future development and enhancement at the Wan Chai North and North Point harbourfront areas with attractive, accessible, vibrant, sustainable and distinctive characters for public enjoyment.

5. The UDS will undergo four major phases -

- (a) Phase 1 – Inception and baseline review
- (b) Phase 2 – Urban design objectives and considerations, key issues, urban design concepts/framework for the Key Sites

Task Force on Harbourfront Developments on Hong Kong Island

TFHK/01/2015

- (c) Phase 3 – Harbourfront enhancement proposals and Planning & Design Briefs with urban design control mechanisms
- (d) Phase 4 – Study finalisation

6. The UDS is now at Phase 1. The Consultant is working to analyse key issues involved, to review the existing development framework as outlined in the Recommended Outline Development Plan, and to make reference to previous local/overseas experiences in enhancing the waterfront environment, etc.

7. The UDS is expected to be completed in 18 months by mid-2016. The key milestones are briefly outlined as follows -

Action / Events	Tentative Timeline
Study kick-off	21 Jan 2015
Preliminary Urban Design Framework Plan	Week 5 – Week 8
Stage 1 Public Engagement	Week 9 – Week 22
Refined Urban Design Framework and Preliminary Harbourfront Enhancement Proposals	Week 22 – Week 39
Stage 2 Public Engagement	Week 40 – Week 52
Finalised Harbourfront Enhancement Proposals	Week 52 – Week 60
Planning and Design Briefs	Week 60 – Week 69
Study Completion	Week 70 – Week 72

PUBLIC ENGAGEMENT PLAN

8. As set out above, the Consultant shall conduct a two-stage Public Engagement (PE) programme as an integral part of the study to build public consensus. Stage 1 PE (tentatively scheduled for April to June 2015) aims to gather public views on urban design objectives and issues, sustainability design objectives, urban design considerations and urban design concepts/framework for the three Key Sites. Stage 2 PE will focus on seeking public views on the refined urban design framework for the study area and the harbourfront enhancement proposals for the three Key Sites.

Task Force on Harbourfront Developments on Hong Kong Island

TFHK/01/2015

9. To solicit innovative ideas from the public, activities will be organised to invite design ideas for the Consultant's consideration. In addition, the Consultant shall collaborate with local stakeholders to organise on-site events at the Key Sites to gauge views from the public on their vision and ideas in respect of the future development.

10. We would engage the Task Force further on the detailed PE programme and work closely with the Commission during the study process.

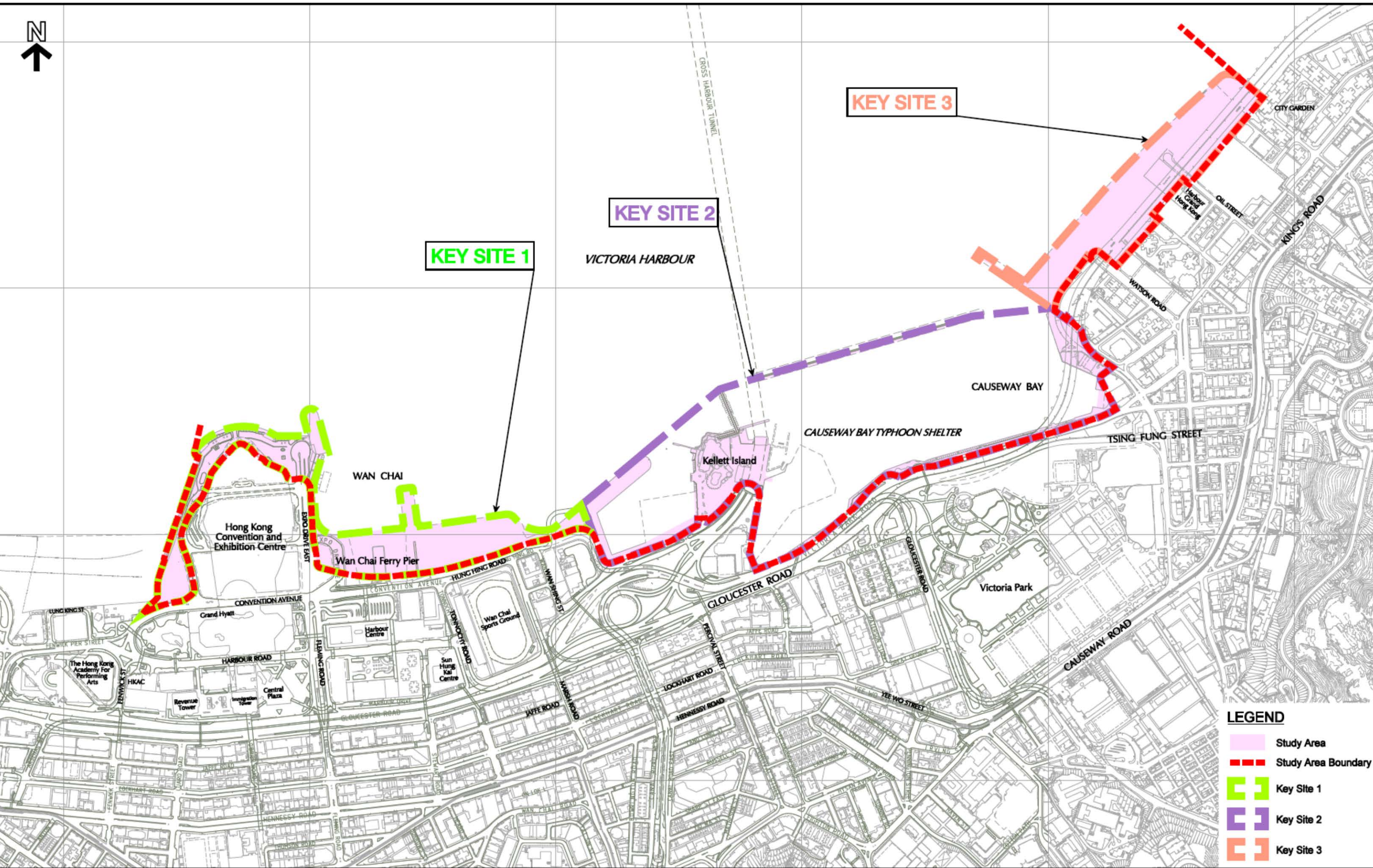
ADVICE SOUGHT

11. Members are invited to note the study progress and express their further views on the UDS.

ATTACHMENTS

Plan 1 Study Area and Key Sites of the UDS

Planning Department
February 2015




KEY SITE 1

KEY SITE 2

KEY SITE 3

LEGEND

-  Study Area
-  Study Area Boundary
-  Key Site 1
-  Key Site 2
-  Key Site 3