

9

MONTHS

New Harbourfront
Hot Spots Opened

個月

個海濱新潮玩熱點



28. 6. 2021

VICTORIA
HARBOUR
維多利亞港

9 個月9個場
sites in nine months

邊9個月先?
Which nine months?

10.2020 → 06.2021

月月有場開
New sites every month

咁誇張?
Really?

平均數係呀
On average

邊度呀?
Where?

港、九、
新界都有
HK Island, Kowloon
Side & NT

即係邊9個場?

Which nine?

Belcher Bay 卑路乍灣海濱長廊

1



Water Sports & Recreational Precinct
水上活動及康樂主題區

2



Tamar Promenade
添馬海濱長廊

6



Tsuen Wan Promenade 荃灣海濱長廊

5



Pier Six Precinct
渡輪碼頭畔主題區

3



Promenade Adjacent to HK Children's Hospital
啟德海濱長廊(香港兒童醫院段)

9



HarbourChill 海濱休閒站

7



4



Pink Corridor 粉紅通道

8



Kai Tak Sky Garden 啟德空中花園

詳見桌上海報 See posters tabled for details



速度絕對是重點。
但快得嚟，唔要hea ...

*Efficiency certainly matters, but not
at the expense of quality ...*

新記錄!! 海濱休閒站

2021年5月開放

*HarbourChill
Opened in May 2021*

New record

*Works lasted
for some
4 months*

工期
約4個多月

水上活動及康樂主題區

2020年11月開放

工期
約7個月

*Works lasted
for 7 months*

*Water Sports & Recreational Precinct
Opened in November 2020*



你喜歡這些場地嗎?
Do you like them

「海濱」是甚麼？

What is "harbourfront"?

不只

答：是

Answer: It's ...

公園

A PARK

not only

~~50~~

第二擊
2nd attempt

「海濱」是甚麼？

What is "harbourfront"?

答：是 公共空間 ✓ 80

Answer: It's ...

A Public Space

最終回
Final attempt

「海濱」是甚麼？

What is "harbourfront"?

答：是

實驗場

Answer: It's ...

An Experimental Space

100

「實驗精神」 實乎嘗試、改良和創新

Experiments involve trials,
refinement & innovation

Virgin arrangements in past 9 months

過去9個月的「第一次」

1st cosplay & actress

第一次角色扮演

第一個女主角



首個大型地畫

1st floor paint



1st mobile item

首批可移動
傢俬/裝置



等等 ...
etc.



全港首創

海濱網上遊 1st HF virtual tour in HK

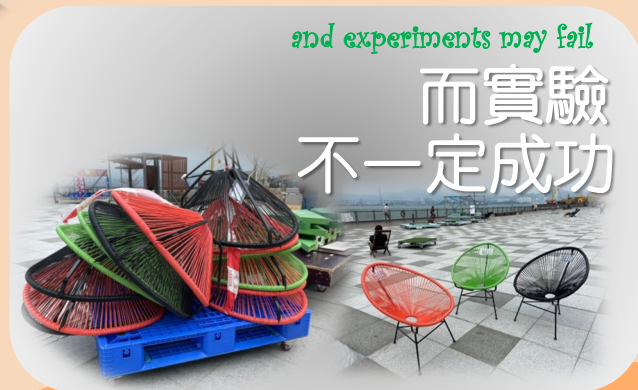
第一個
海上雕塑



1st sea sculpture

and experiments may fail

而實驗
不一定成功





雪糕好多人人都愛吃，
但餐餐都吃雪糕，
你又受得了嗎？



No matter how
much you like ice-cream,
do you mind having it
alone for all your meals?

雪糕之後
Ice-cream

都係雪糕



Only
ice-cream

More
ice-cream

吃多會膩呀!

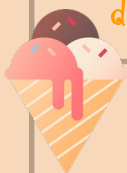
Too bored to repeat

當然最好

有不同菜式啦

Choices are preferred

單吃雪糕都挑
不同口味啦 Maybe
different flavour



所以海濱都要
「段段有特色」

Varieties matter
at harbourfront.





Tsuen Wan Promenade
荃灣海濱長廊

HarbourChill
海濱休閒站

Water Sports &
Recreational Precinct
水上活動及康樂主題區

Belcher Bay
卑路乍灣海濱長廊

Tamar Promenade
添馬海濱長廊

Promenade Adjacent to
HK Children's Hospital
啟德海濱長廊
(香港兒童醫院段)

Pierside Precinct
渡輪碼頭畔主題區



Kai Tak Sky Garden
啟德空中花園



Pink Corridor
粉紅通道

你又配對得到嗎？

Can you match

Harbour & the Runway
空中海濱

Art Harbour
藝術海濱

Harbour & the Plane
翱翔海濱

Harbour de Chic
型格海濱

Cartoon Harbour
卡通海濱

Harbour de Chill
休閒海濱

Harbour de Motion
動感海濱

Harbour & the Mini Me
童樂海濱

Harbour de Vogue
嬌俏海濱

「海濱共享空間」

“Harbourfront Shared Space” (HSS)

元祖：卑路乍灣海濱長廊
Pioneer: Belcher Bay Promenade



應用到更多場地 To more sites

海濱休閒站 HarbourChill



粉紅通道
Pink Corridor

Water Sports &
Recreational Precinct
水上活動及康樂主題區



傳統公園

Traditional Parks

< 遊樂場地規例 >

Pleasure Grounds Regulation

條限清晰。指定個別活動區域

Defined rules & activity zones

設計平隱。裝置固定安裝

Stable design with fixed structures

定期觀察和回應

Regular monitoring & responses

主要由部門設計和建造

Mainly designed & built by departments

「海濱共享空間」

Harbour-front Shared Space

Least rules • Vision-driven

最少規則。願景帶動

Open management • No defined activity zones

開放式管理。活動不設指定區域

Flexible design with mobile items

靈活設計。採用可移動裝置

User-oriented • Continuous observations • ASAP responses

用家為本。持續觀察。盡快回應

Public engagement in design & built

各界參與建設

「海濱共享空間」 Harbourfront Shared Space

Least rules • Vision-driven

最少規則。願景帶動



Open management • No defined activity zones

開放式管理。活動不設指定區域

Flexible design with mobile items

靈活設計。裝置可移動



User-oriented • Continuous observations • ASAP responses

用家為本。
持續觀察。
盡快回應。



各界參與建設 Public engagement



卑路乍灣海濱長廊「用家意見調查」2021

Belcher Bay Promenade 2021 User Survey

93%

滿意卑路乍灣海濱長廊
satisfied with Belcher Bay Promenade

87%

認同較少規則的做法
agreed that it is better to have
fewer rules

81%

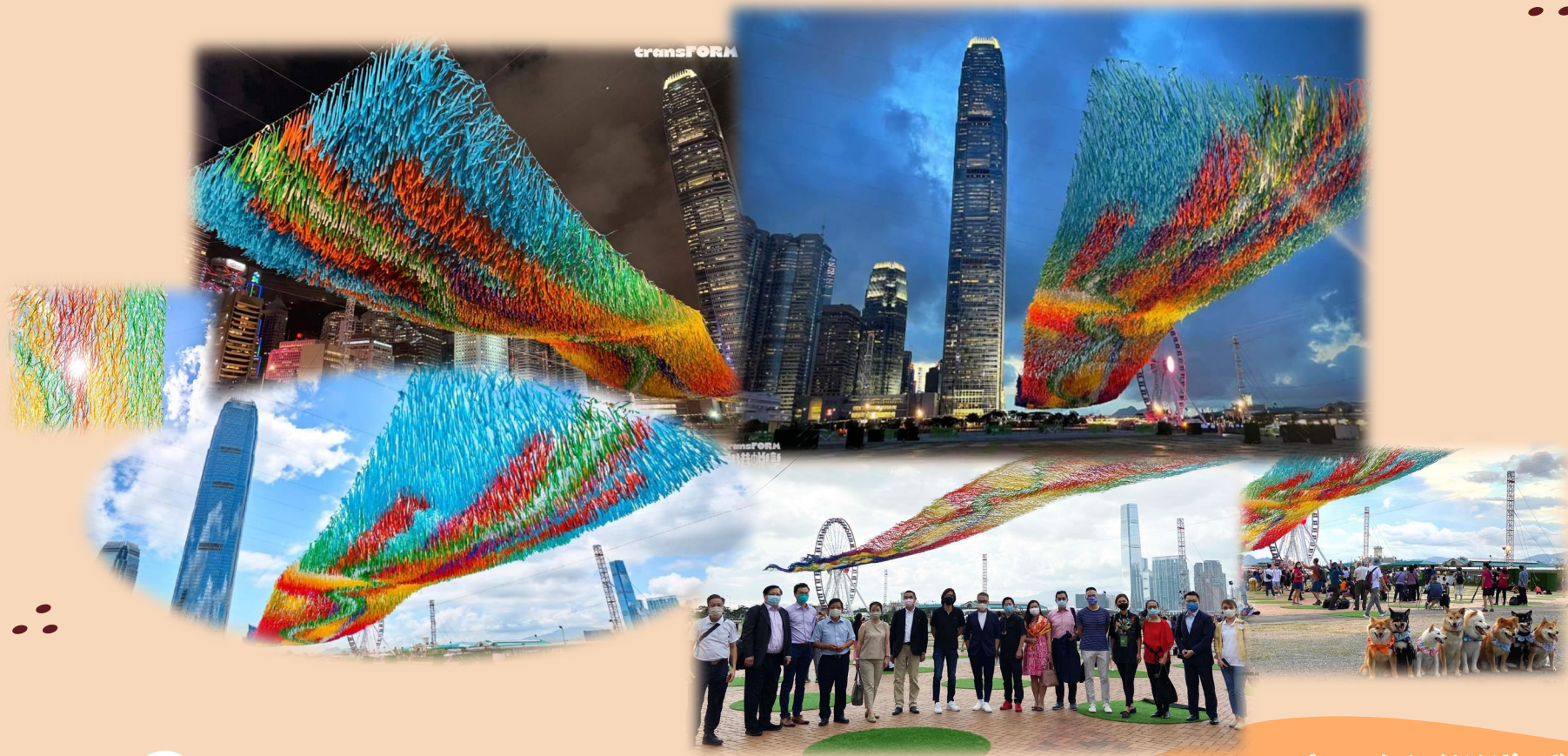
認同「期間限定」能為用地
增值
agreed that pop-up can add value
to the site

77%

當區受訪者每週前來多於一次
survey respondents that live in the
District visit the site more than once a
week

Source: Walk In Hong Kong
資料來源:活現香港

創造條件。誘發潛能 Empowerment



「鼓勵參與」至「誘發潛能」

Engagement to Empowerment

項目無制限

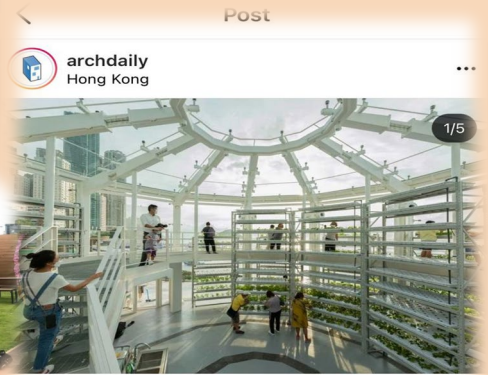
Borderless

連繫專業

Networking professionals

超乎想像

Out of positive expectation



2,201 likes

archdaily K-farm challenges urban farming under extreme conditions and makes farming into STEM education for all people. Because of the coastal condition along #VictoriaHarbour, the design combines three types of farming to suit the specific site and climate conditions: Hydroponics to provide 365 farming in all conditions, Aquaponics to study how fish and plants coexist, Organic with various height and species to serve as inclusive farming and maintain the community's ecosystem. Swipe to see more of this project.

最終回

The Final Chapter

2021下半年節目預告

New Sites in the Pipeline the second half of 2021



東岸公園主題區 (第3季)
East Coast Park Precinct (Q3)

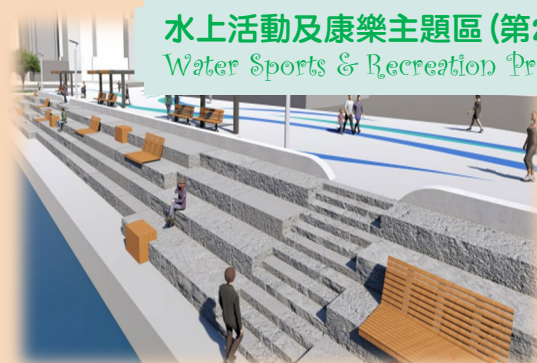


維園道海濱 (第4季)
Victoria Park Road Promenade (Q4)

渡輪碼頭畔主題區 (第2期) (第4季)
Pierside Precinct (Phase 2) (Q4)



水上活動及康樂主題區 (第2期) (第4季)
Water Sports & Recreation Precinct (Phase 2) (Q4)



戮力共建更美好的海濱

*Let's make every endeavor
to build an even better Harbourfront*



VICTORIA
HARBOUR
維多利亞港

