

# HONG KONG MARITIME MUSEUM ANCHOR PLAZA VISITOR CENTRE

LOCATED IN FRONT OF CENTRAL PIERS NO. 9 & 10



# HISTORY OF THE ANCHOR

ANCHOR FOR THE LARGEST SHIP THAT EVER SAILED



## SEAWISE GIANT

- "TWICE THE SIZE OF THE TITANIC"

- BUILT IN 1979

- TRADED FOR 15 YEARS UNDER HONG KONG SHIPPING MANAGEMENT

- WAS OWNED BY TUNG CHAO YUNG.  
(INITIALS "CY" INSPIRED THE NAME "SEAWISE")

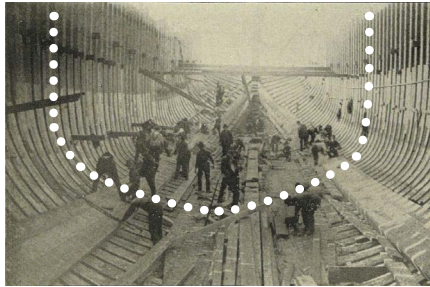
- DISPLAY TO THE PUBLIC AS PART OF AN OUTDOORS EDUCATIONAL PLAZA



# CONCEPT DESIGN

AN EDUCATIONAL PLAZA FOR THE DISPLAY OF THE ANCHOR

HISTORY, ART AND SCIENCE



+



+

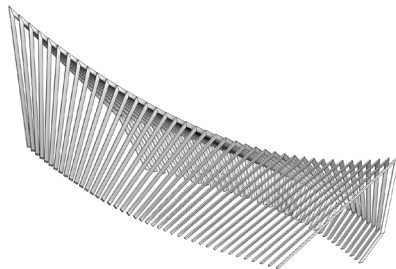


DIFFERENT PROFILE OF SHIPS OVER TIME



UNIQUE ARCHITECTURAL FORMS

REINTERPRETATION  
OF TRADITIONAL  
BOAT FORM



REINTERPRETATION  
OF THE SEA AND  
WAVES

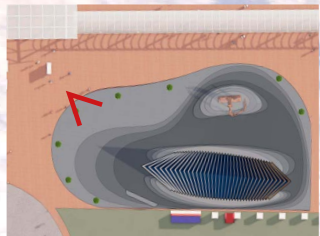


## CONNECTING THE PUBLIC WITH THE HONG KONG HARBOUR

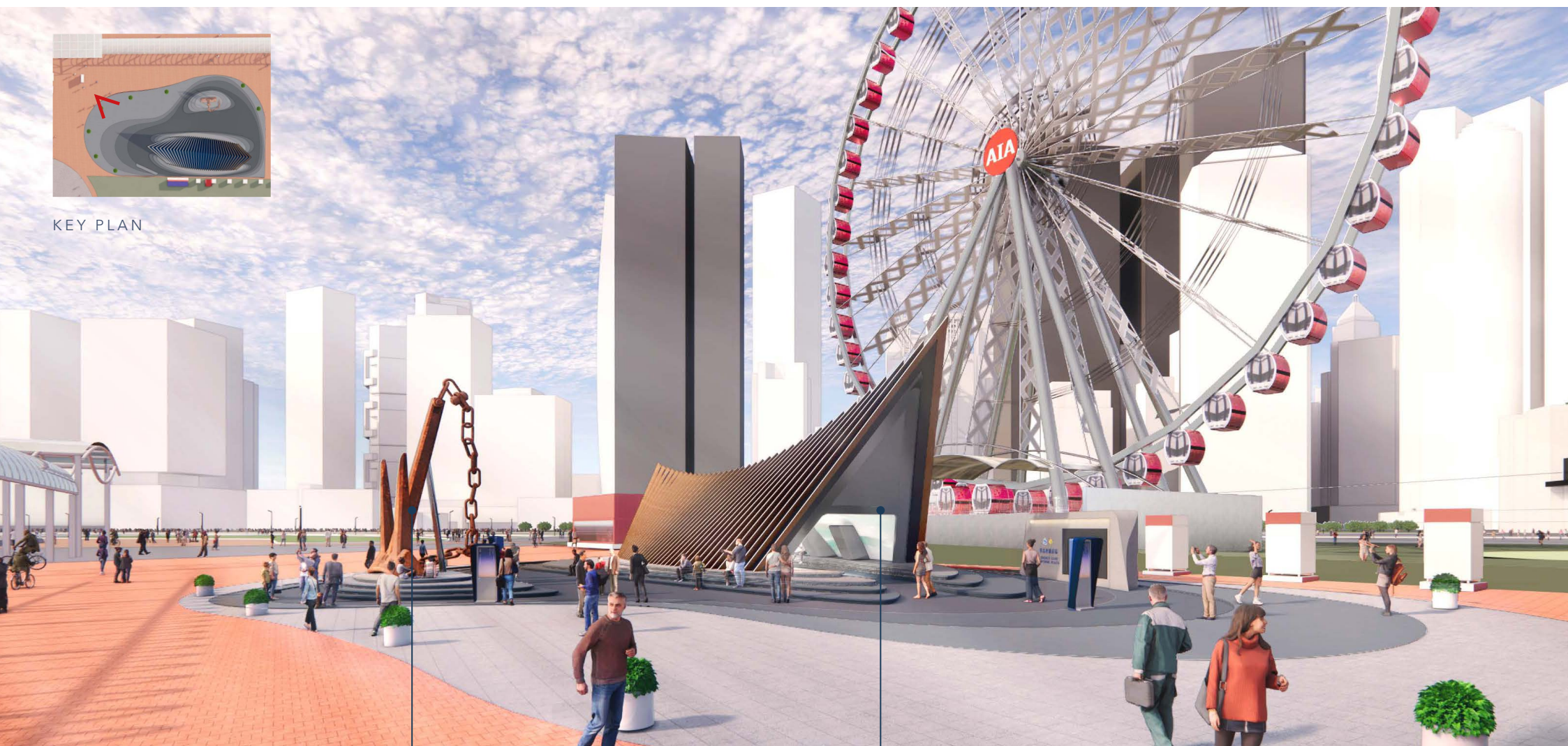


# PROPOSED DESIGN

LETS START OUR JOURNEY!



KEY PLAN



DISPLAY OF ANCHOR

VISITOR CENTRE PAVILION

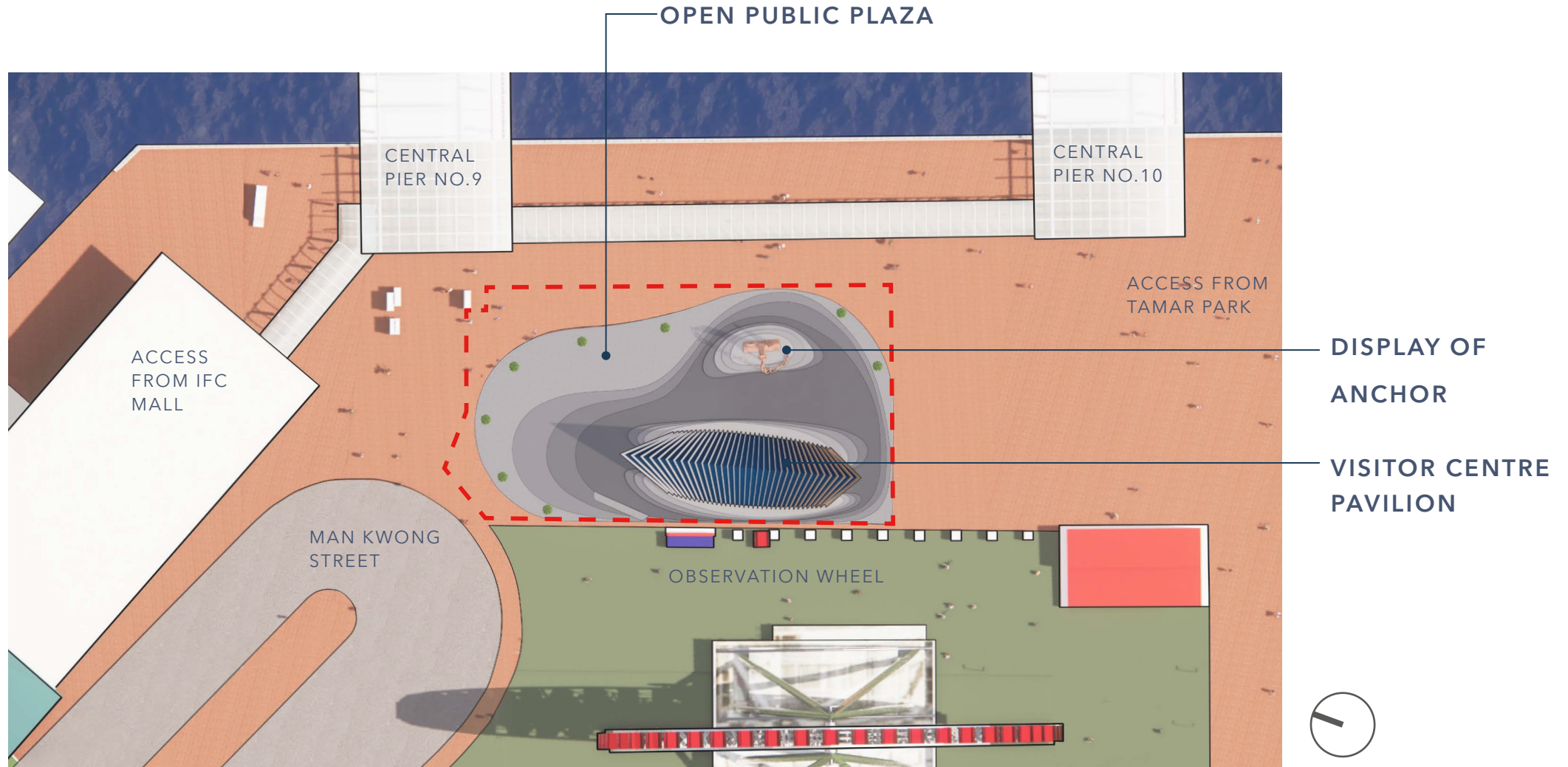


HONG KONG MARITIME MUSEUM ANCHOR PLAZA VISITOR CENTRE  
REINTERPRETING HISTORY, ART AND SCIENCE

ARTA  
ARCHITECTS

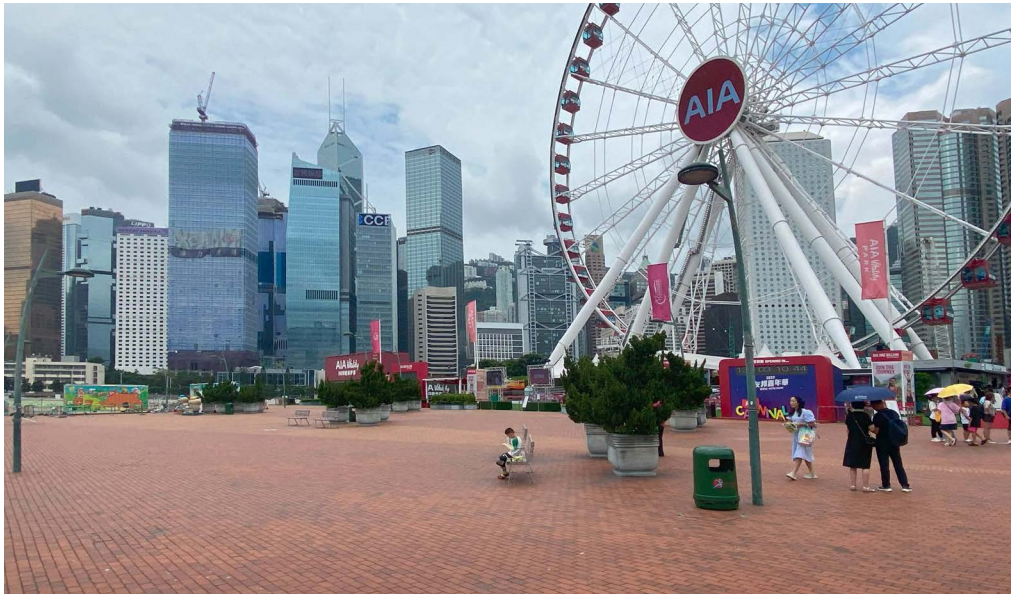
# SITE PLAN

EXCITING AND NEW CULTURAL LANDMARK AT THE HARBOURFRONT



# SITE CONTEXT

## EXCITING AND NEW CULTURAL LANDMARK AT THE HARBOURFRONT



**EXISTING SITE CONDITION**

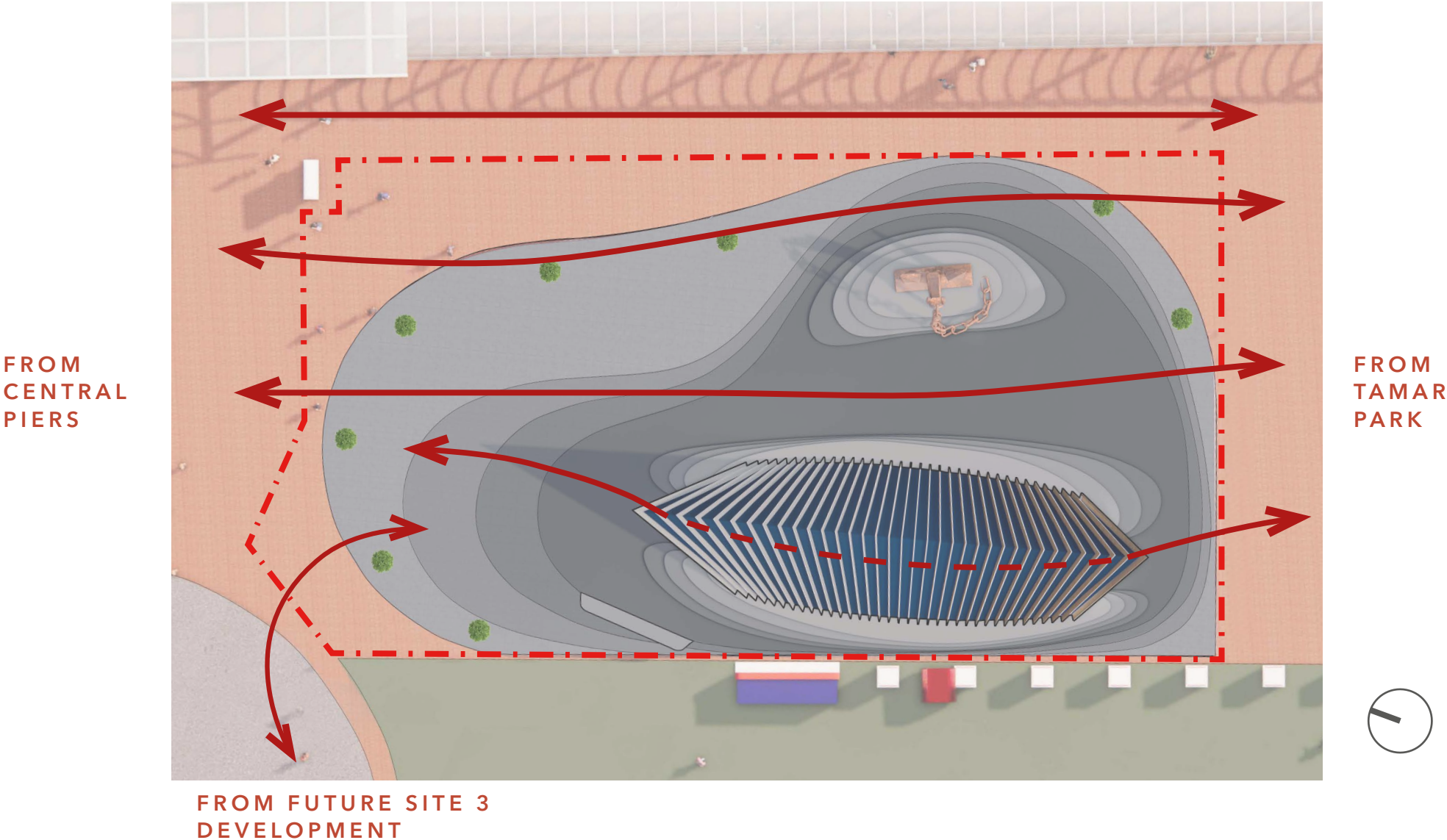


**PROPOSED SCHEME**



# 1. ACCESSIBLE HARBOUR

UNRESTRICTED AND CONVENIENT VISUAL AND PHYSICAL ACCESS



## 2. INTEGRATED PLANNING

SMALL FOOTPRINT TO MAXIMIZE PUBLIC OPEN SPACE

### SITE COVERAGE

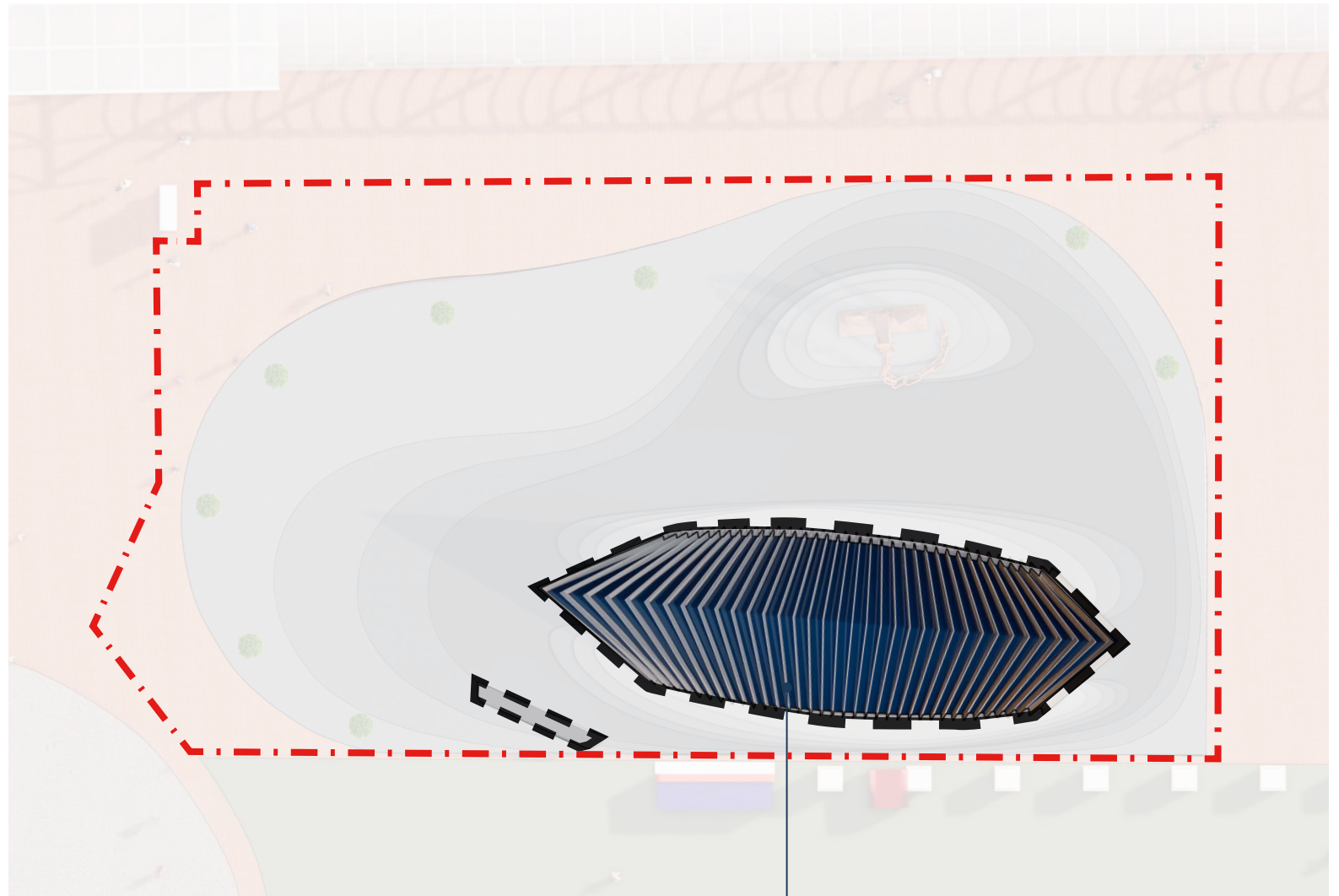
= LESS THAN **15%**

(ALLOWABLE = 100%)

### PLOT RATIO

= LESS THAN **0.15**

(ALLOWABLE = 5)



VISITOR CENTRE PAVILION





## 2. INTEGRATED PLANNING

LOW HEIGHT OF PAVILION TO MINIMIZE VISUAL IMPACT

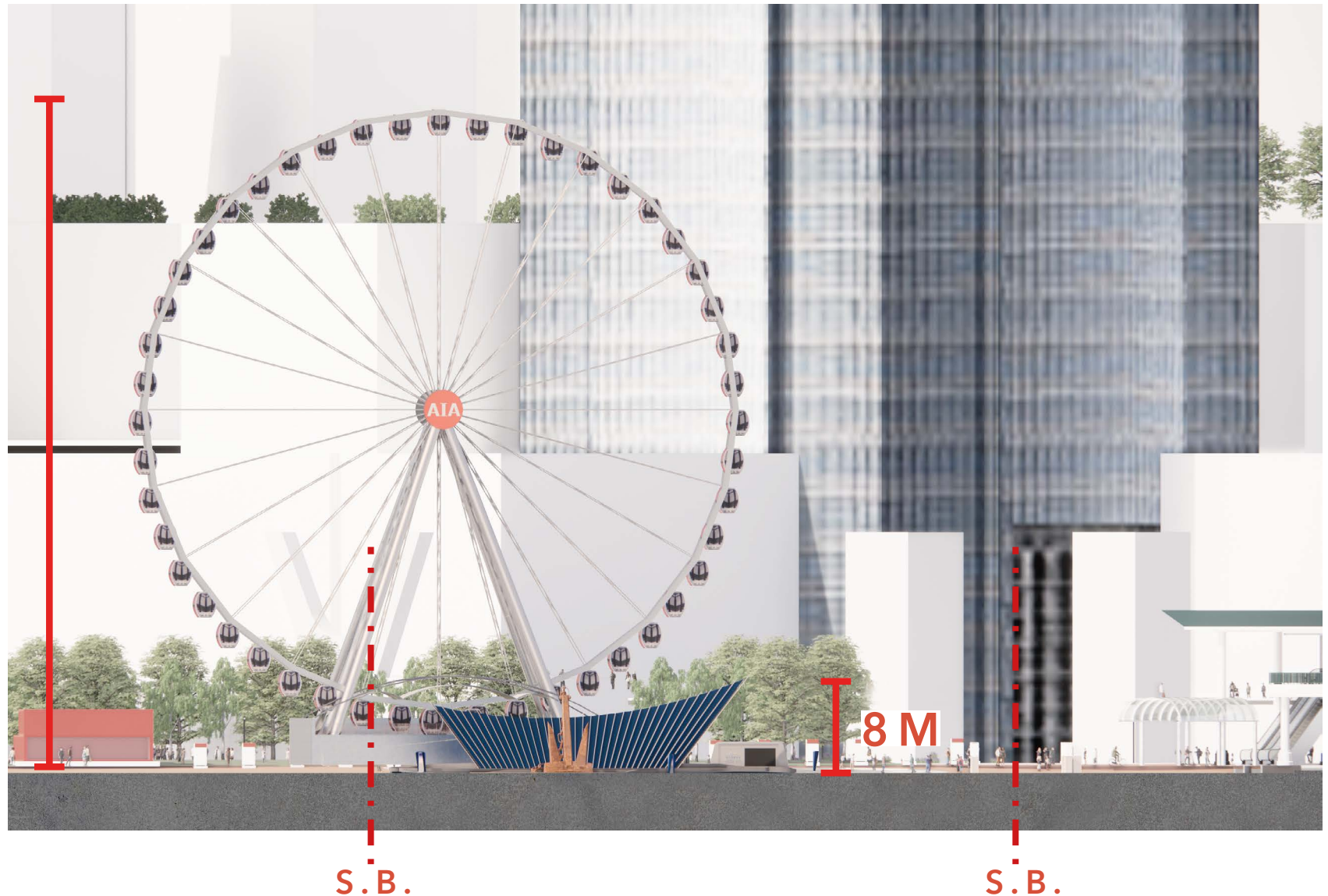
HONG KONG  
OBSERVATION WHEEL  
& AIA VITALITY PARK

**VIEWS  
FROM THE  
SKY**

60 M

HONG KONG  
MARITIME MUSEUM  
ANCHOR PLAZA  
VISITOR CENTRE

**VIEWS  
FROM THE  
SEA**



## 2. INTEGRATED PLANNING

LOW HEIGHT OF PAVILION TO MINIMIZE VISUAL IMPACT

HONG KONG  
OBSERVATION WHEEL  
& AIA VITALITY PARK  
.....

60 M

VIEWS FROM THE SKY

HONG KONG  
MARITIME MUSEUM  
ANCHOR PLAZA  
VISITOR CENTRE  
.....

8 M

VIEWS  
OF THE  
SEA



### 3. VIBRANT HARBOUR

FLEXIBILITY FOR DIFFERENT CULTURAL AND LEISURE EVENTS AROUND THE ANCHOR



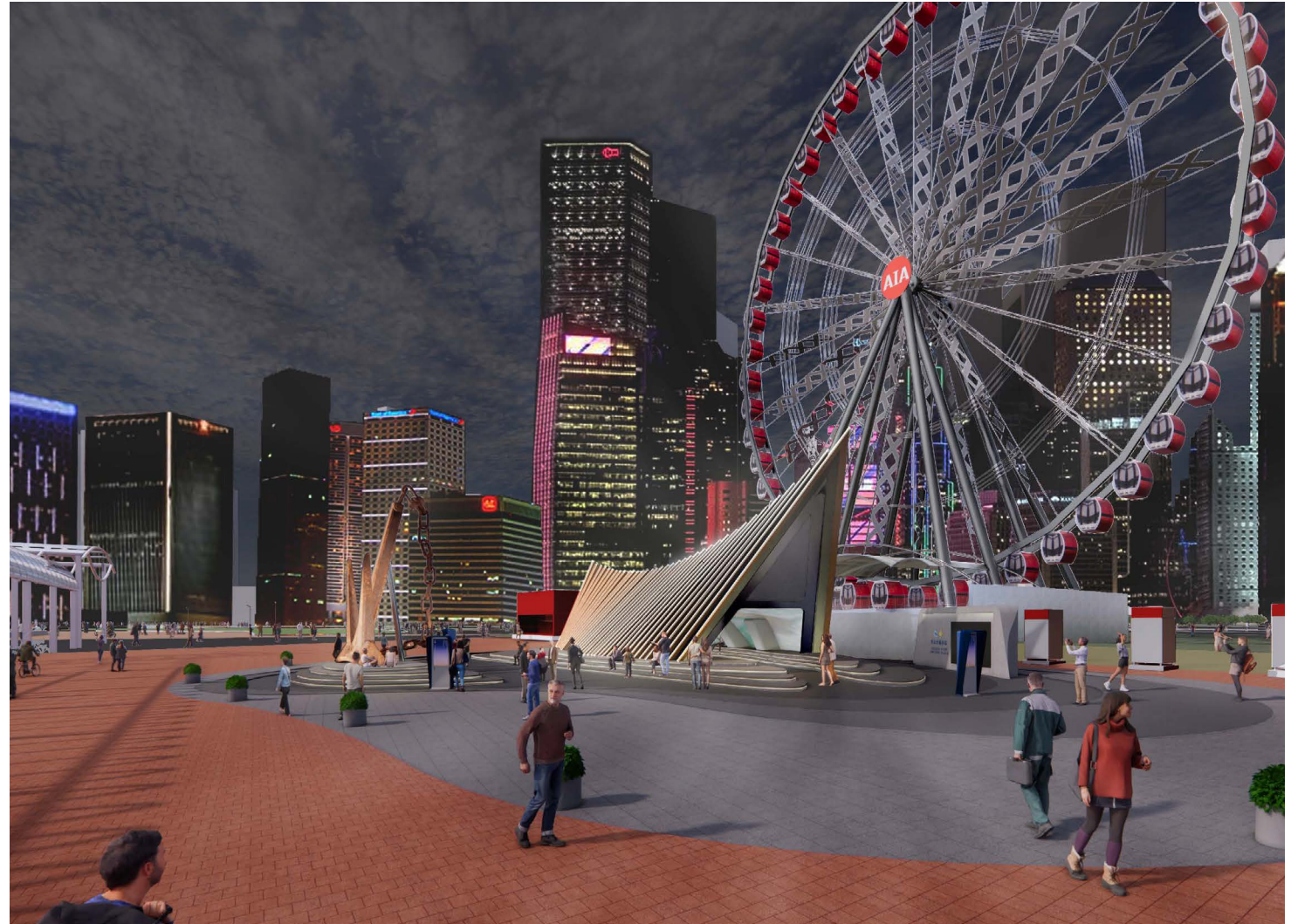
PERFORMANCES



GATHERINGS



CEREMONIES



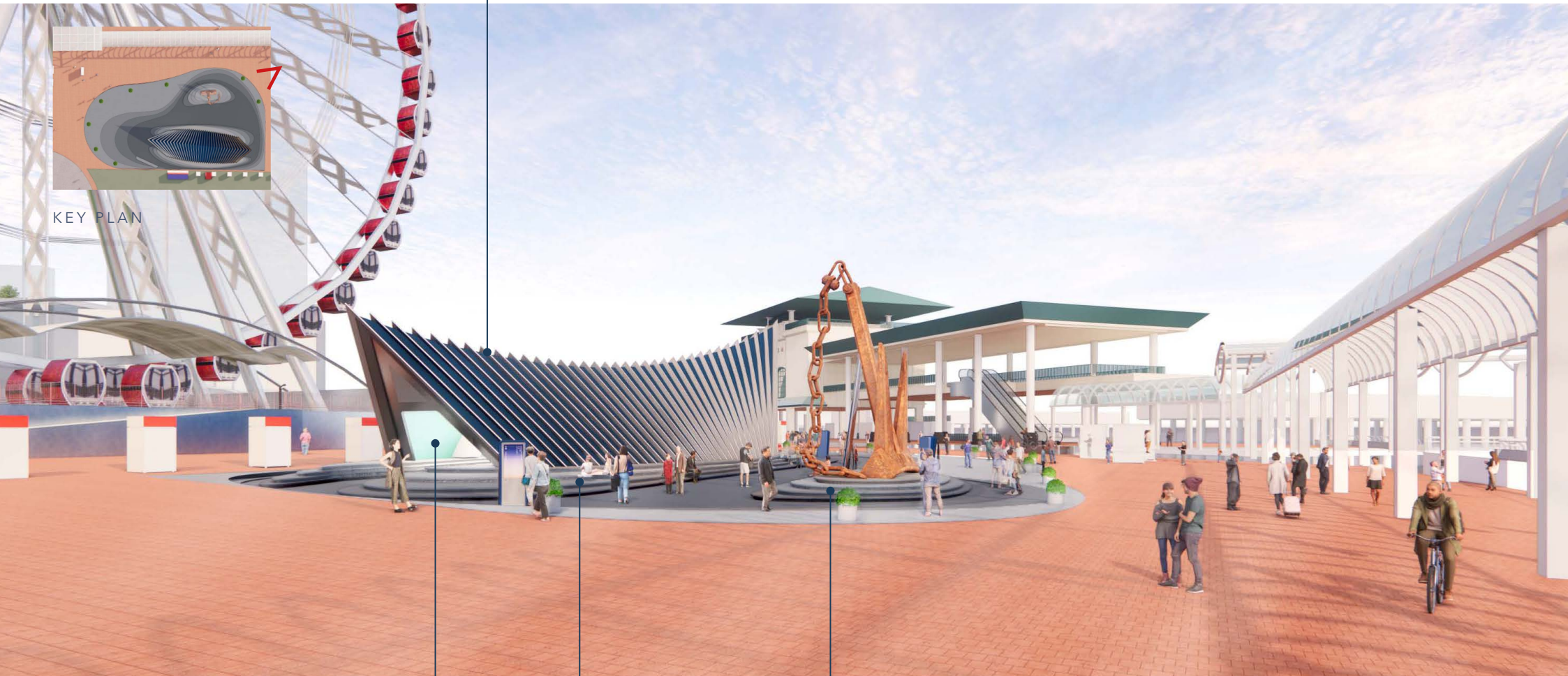
LIGHT SHOW



## 4. PUBLIC ENJOYMENT

SEATING FOR RESTING AND TO ENJOY THE HARBOUR VIEW

COVERED SEATING AREA  
PROVIDING SHELTER FROM THE RAIN



KEY PLAN

FREE ADMISSION

PUBLIC SEATING

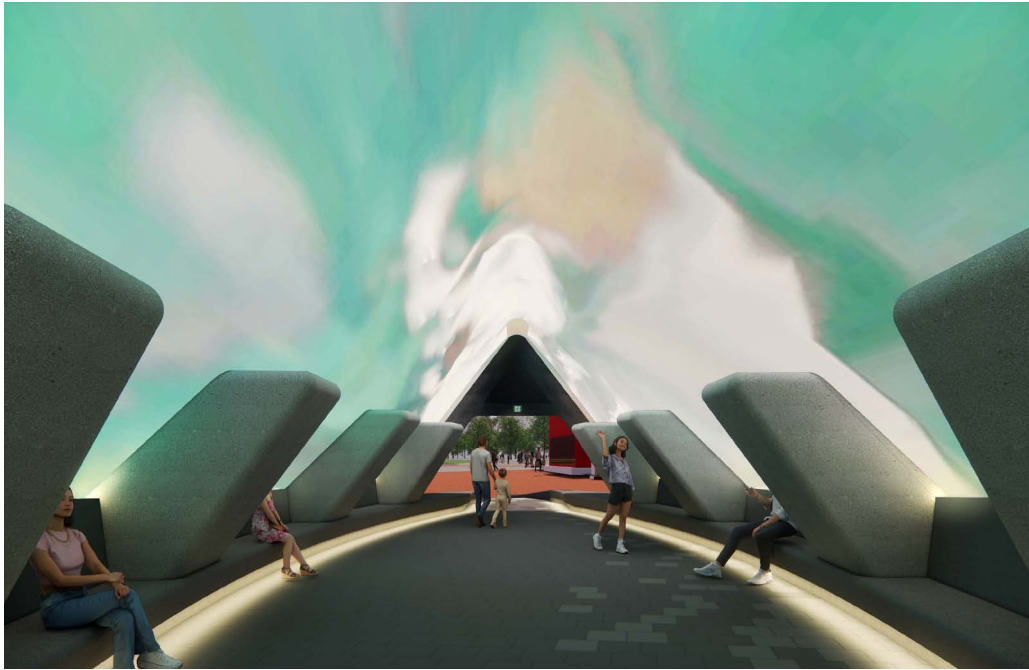


HONG KONG MARITIME MUSEUM ANCHOR PLAZA VISITOR CENTRE  
REINTERPRETING HISTORY, ART AND SCIENCE

ARTA  
ARCHITECTS

## 4. PUBLIC ENJOYMENT

ART-TECH TO ATTRACT LOCALS AND TOURISTS TO THE HARBOURFRONT



**“LEVERAGING THE BOLD AND INNOVATIVE SPIRIT OF LOCAL ARTISTS, I BELIEVE THAT, WITH THE ACTIVE PROMOTION AND SUPPORT OF THE GOVERNMENT, ART TECH WILL FLOURISH AND THRIVE IN HONG KONG.”**

THE CHIEF EXECUTIVE’S 2020 POLICY ADDRESS



HONG KONG MARITIME MUSEUM ANCHOR PLAZA VISITOR CENTRE  
REINTERPRETING HISTORY, ART AND SCIENCE

ARTA  
ARCHITECTS

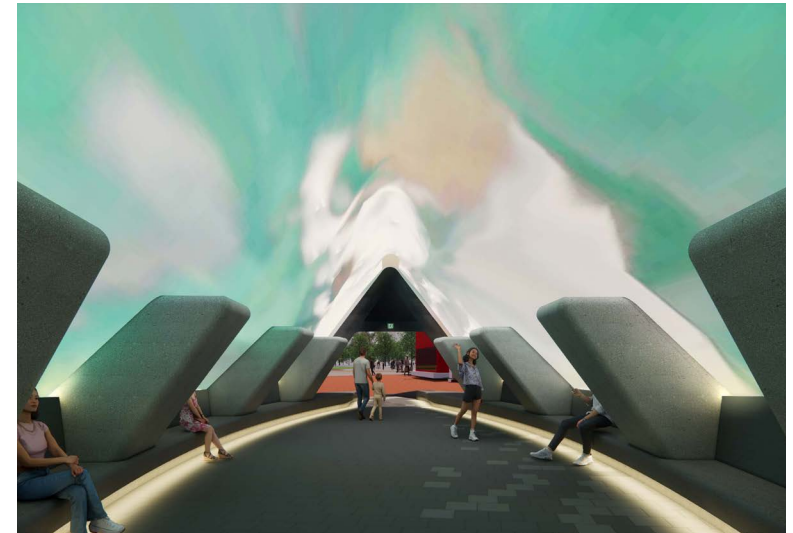
## 4. PUBLIC ENJOYMENT

ART-TECH TO PROVIDE ENTERTAINMENT AND EDUCATION TO THE PUBLIC



1. COVERED IMMERSIVE SPACE

2. INTERACTIVE DISPLAY BOARD



1. IMMERSIVE SPACE PROJECTIONS

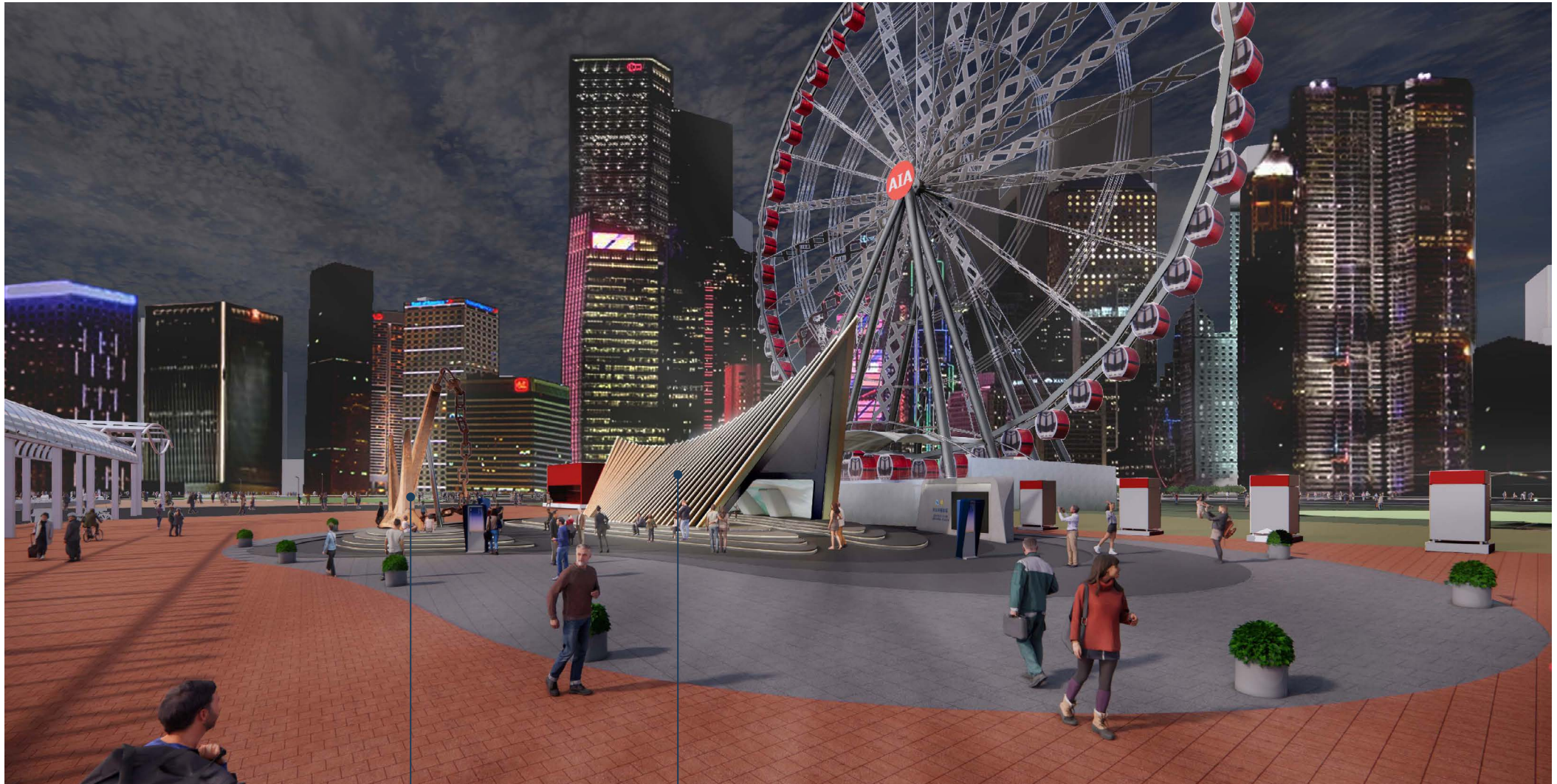


2. INTERACTIVE DISPLAY BOARDS



## 4. PUBLIC ENJOYMENT

ART-TECH TO PROVIDE ENTERTAINMENT AND EDUCATION TO THE PUBLIC



3. ANCHOR LIGHT SHOW

4. FACADE LIGHT SHOW

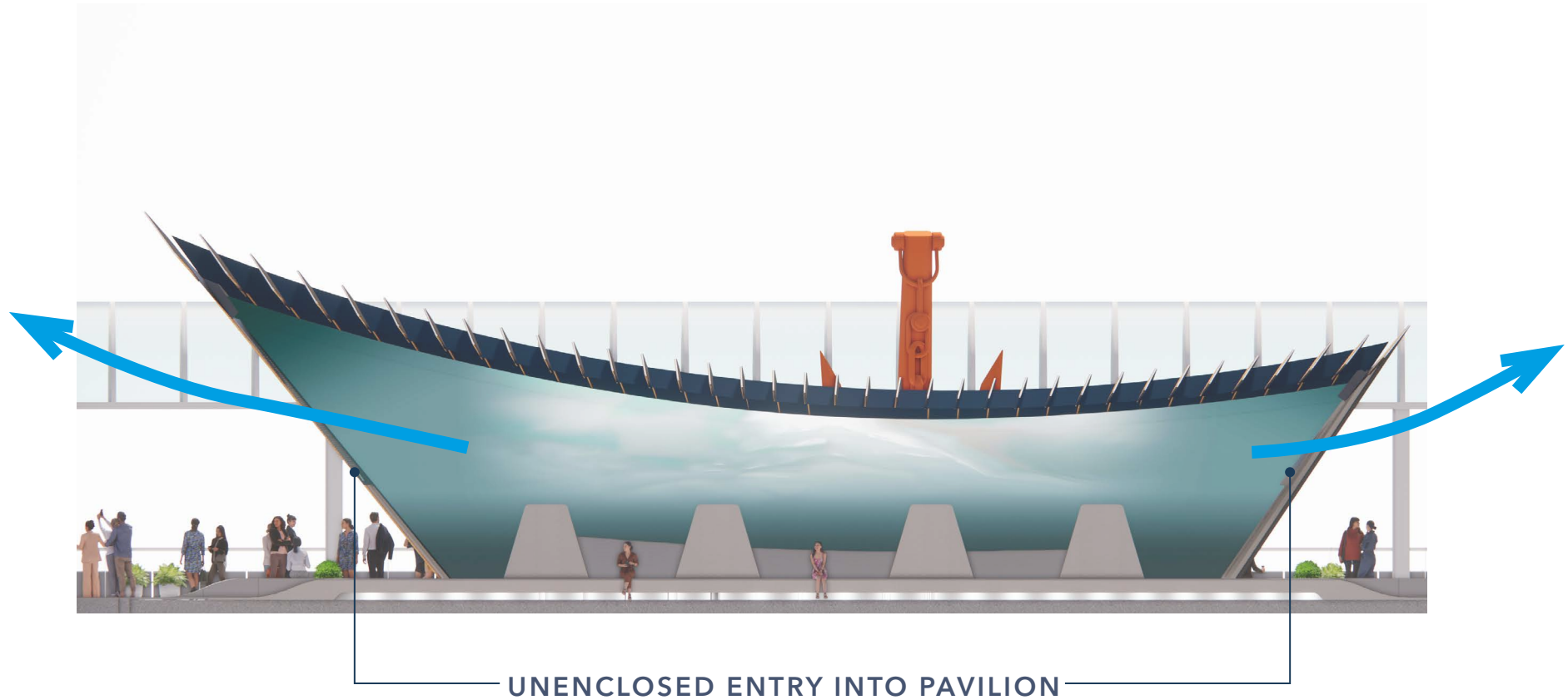


HONG KONG MARITIME MUSEUM ANCHOR PLAZA VISITOR CENTRE  
REINTERPRETING HISTORY, ART AND SCIENCE

ARTA  
ARCHITECTS

## 5. SUSTAINABLE DEVELOPMENT

THE UNIQUE ARCHITECTURAL FORM ENCOURAGES NATURAL VENTILATION



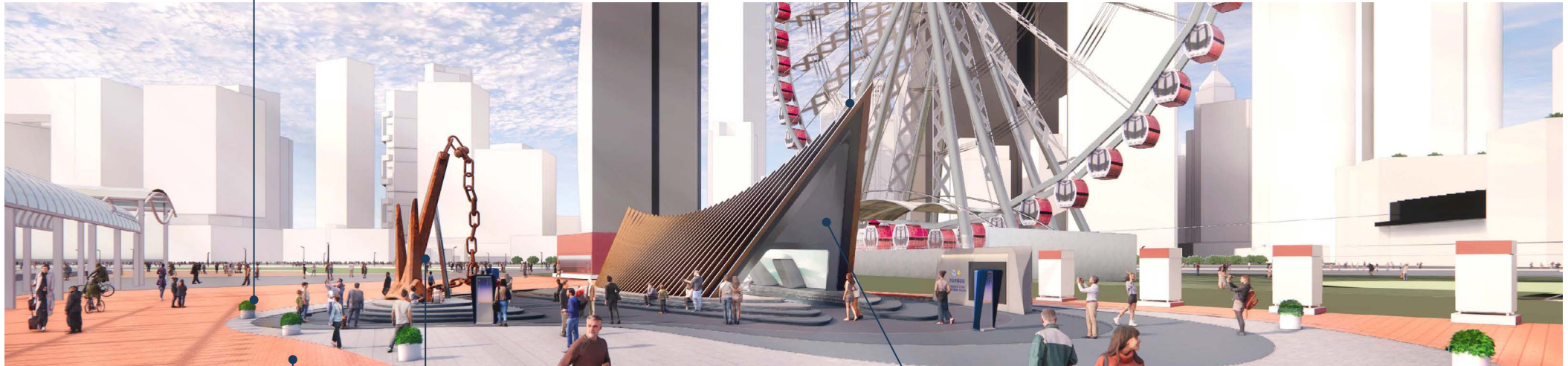


# 5. SUSTAINABLE DEVELOPMENT

## USE OF GREEN BUILDING DESIGNS

POTTED PLANTS TO IMPROVE ENVIRONMENTAL QUALITY AT PEDESTRIAN LEVEL

PAVILION PROVIDES SHADING AND TO MAINTAIN COOL TEMPERATURES



ECO PAVING BLOCKS

PRESERVATION AND REUSE EXISTING ANCHOR TO MINIMIZE USE OF NEW CONSTRUCTION MATERIALS

MODEST AND SLIM PAVILION ENSURES MINIMAL IMPACT TO EXISTING AIR VENTILATION OF THE SITE



## 6. PRESERVING VICTORIA HARBOUR

### PRESERVATION OF THE ANCHOR AND PROTECTING OUR HARBOUR



EXISTING



DISPLAY HISTORICAL ARTEFACT FOR PUBLIC ENJOYMENT



# 7. STAKEHOLDER ENGAGEMENT

## HONG KONG MARITIME MUSEUM ENGAGING WITH THE COMMUNITY



COMMUNITY VISIT



SCHOOL VISIT

AN OPPORTUNITY TO ENGAGE THE PUBLIC VIEWS THROUGHOUT THE DESIGN PROCESS



# 8. PROACTIVE HARBOUR ENHANCEMENT

## WORLDWIDE OUTDOOR CITY LANDMARK



VIEUX PORT PAVILION, MARSEILLE



AUSTRALIAN NATIONAL MARITIME MUSEUM, SYDNEY



NATIONAL MARITIME MUSEUM OF CHINA, TIANJIN



# 8. PROACTIVE HARBOUR ENHANCEMENT

## WORLDWIDE DISPLAY OF ANCHOR



MERSEYSIDE MARITIME MUSEUM, LIVERPOOL



NATIONAL MARITIME MUSEUM, GREENWICH



INTERNATIONALES MARITIMES MUSEUM, HAMBURG

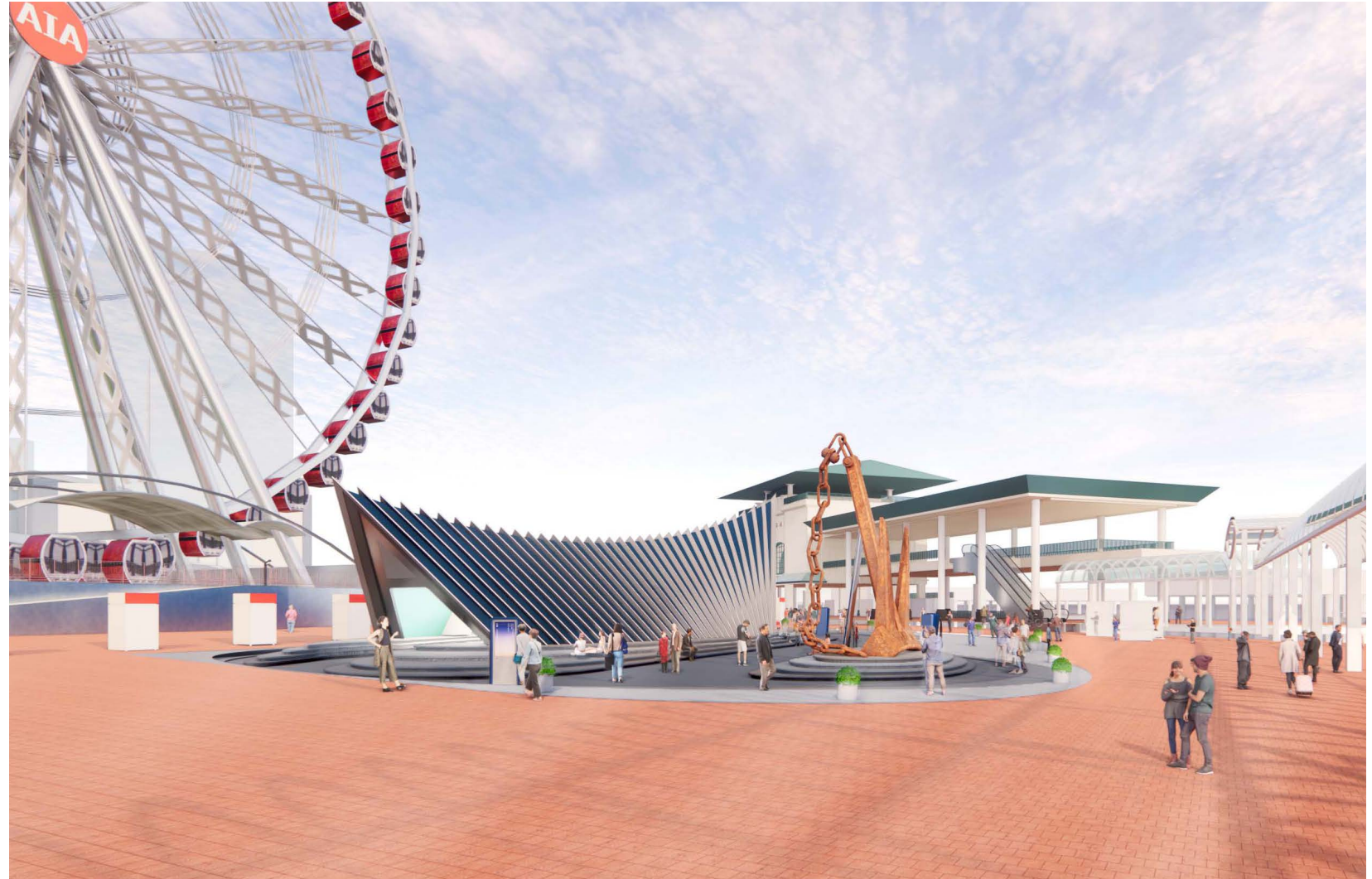


NAVAL MUSEUM OF MANITOBA, MANITOBA



# 8. PROACTIVE HARBOUR ENHANCEMENT

ENHANCE VICTORIA HARBOUR BRAND IDENTITY TO THE INTERNATIONAL COMMUNITY



# SUMMARY OF HARBOUR PLANNING PRINCIPLES

## 1. ACCESSIBLE HARBOUR

- UNRESTRICTED AND CONVENIENT VISUAL AND PHYSICAL ACCESS



## 2. INTEGRATED PLANNING

- SMALL FOOTPRINT FOR MINIMAL IMPACT TO THE SITE



## 3. VIBRANT HARBOUR

- FLEXIBILITY FOR DIFFERENT CULTURAL AND LEISURE EVENTS AROUND THE ANCHOR



## 4. PUBLIC ENJOYMENT

- BENCHES FOR RESTING AND TO ENJOY THE HARBOUR VIEW
- ART-TECH TO PROVIDE ENTERTAINMENT AND EDUCATION TO THE PUBLIC



## 5. SUSTAINABLE DEVELOPMENT

- GREEN AND SUSTAINABLE BUILDING DESIGNS



## 6. PRESERVING VICTORIA HARBOUR

- PRESERVATION OF HISTORICAL ARTEFACT AND OUR HARBOUR



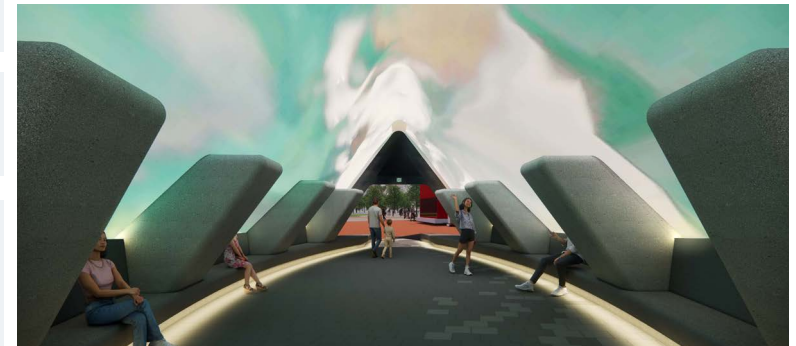
## 7. STAKEHOLDER ENGAGEMENT

- COLLECTING THE VIEWS OF THE PUBLIC



## 8. PROACTIVE HARBOUR ENHANCEMENT

- ANCHOR PLAZA TO ENHANCE HONG KONG URBAN DESIGN TO THE INTERNATIONAL COMMUNITY



# SUMMARY OF SUPPORT

**CULTURE, SPORTS AND TOURISM BUREAU**  
POLICY SUPPORT IN 2022

.

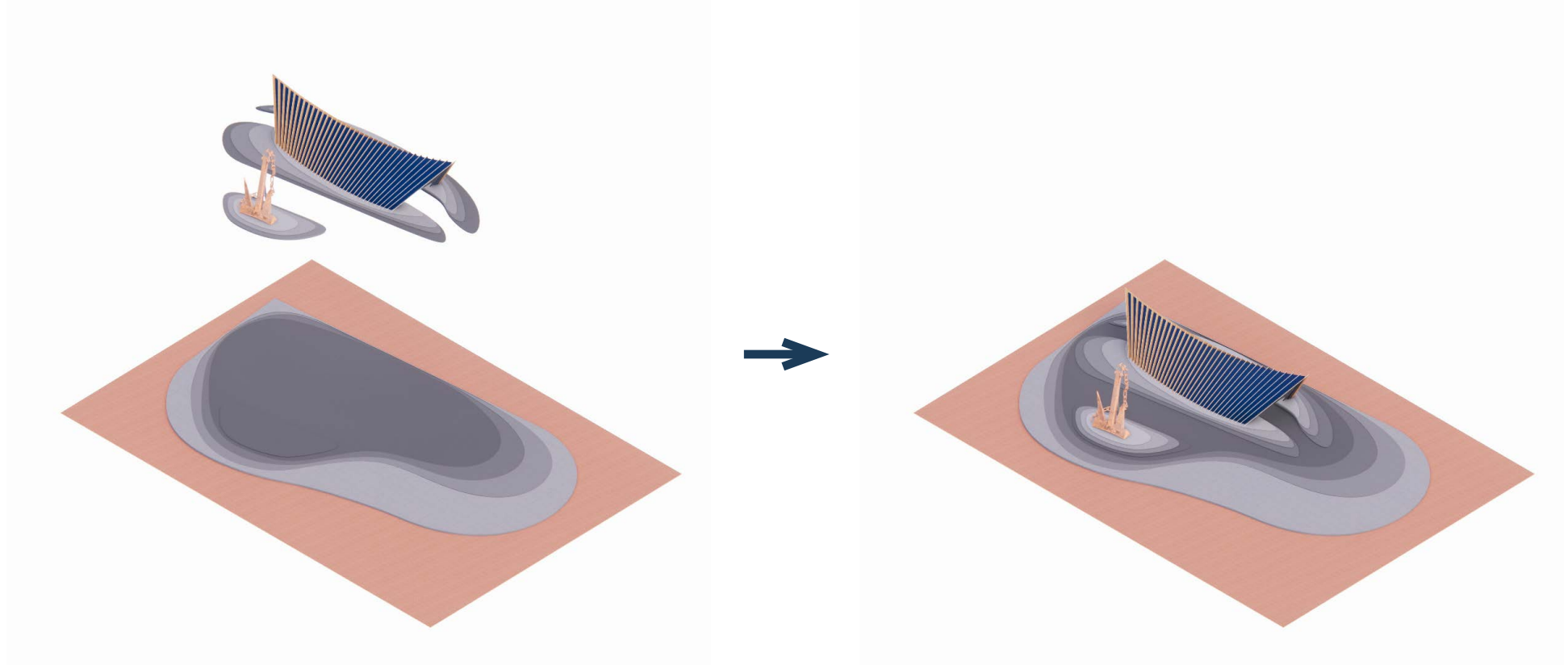
**HONG KONG JOCKEY CLUB**  
FINANCIAL SUPPORT





# PROGRAMME

OFF-SITE PREFABRICATION TO MINIMIZE ON-SITE INSTALLATION TIME



**SITE WORKS ANTICIPATED TO COMMENCE IN Q1 OF 2024  
AND COMPLETED BY Q4 OF 2024**



# CONCLUSION

THROUGH TELLING THE STORIES OF HONG KONG, THE SHIPS AND THE SEA, AN...



ICONIC

+



VIBRANT

+



INTERACTIVE

+



EDUCATIONAL

+



CULTURAL

+



INNOVATIVE

+



COMMUNITY



## HARBOURFRONT PLAZA EXPERIENCE



HONG KONG MARITIME MUSEUM ANCHOR PLAZA VISITOR CENTRE  
REINTERPRETING HISTORY, ART AND SCIENCE

ARTA  
ARCHITECTS