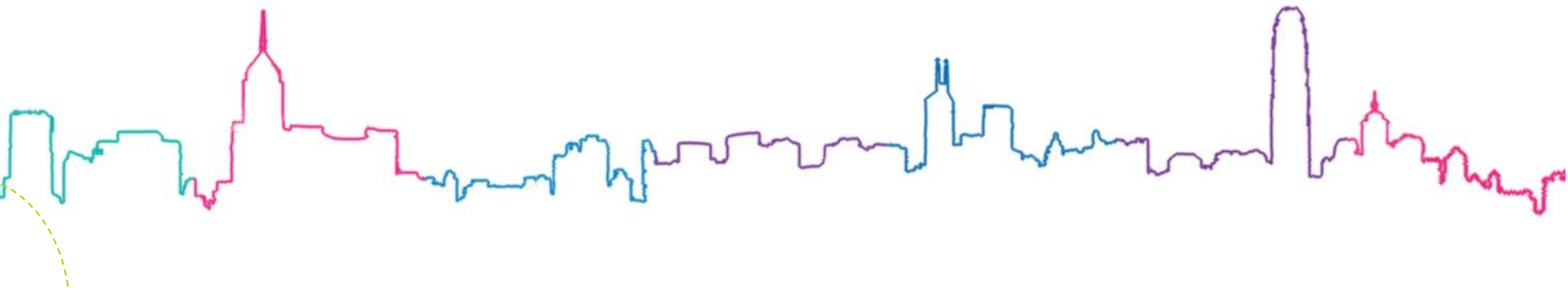




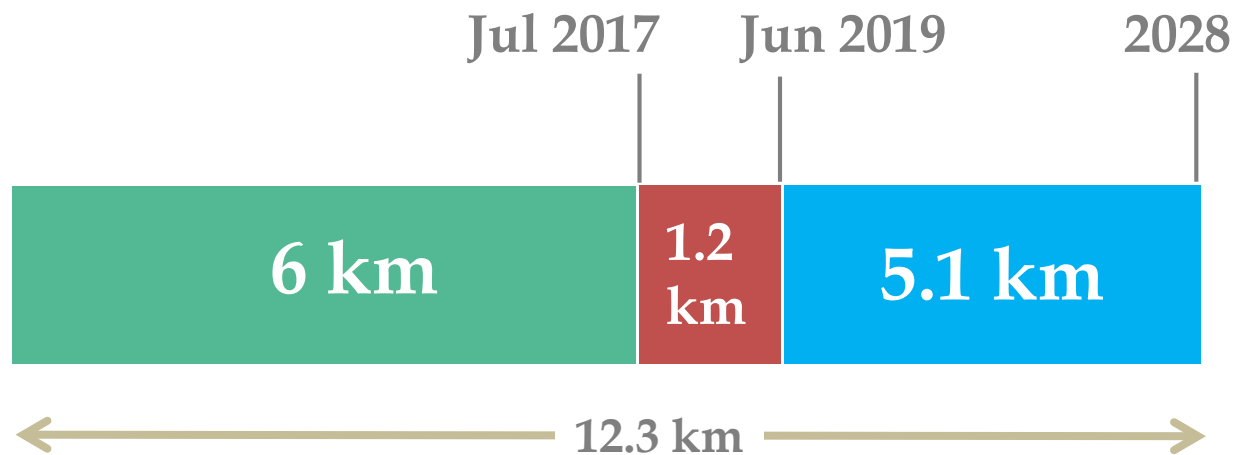
Building a Connected Harbourfront Along Hong Kong Island

*Harbour Office
May 2019*





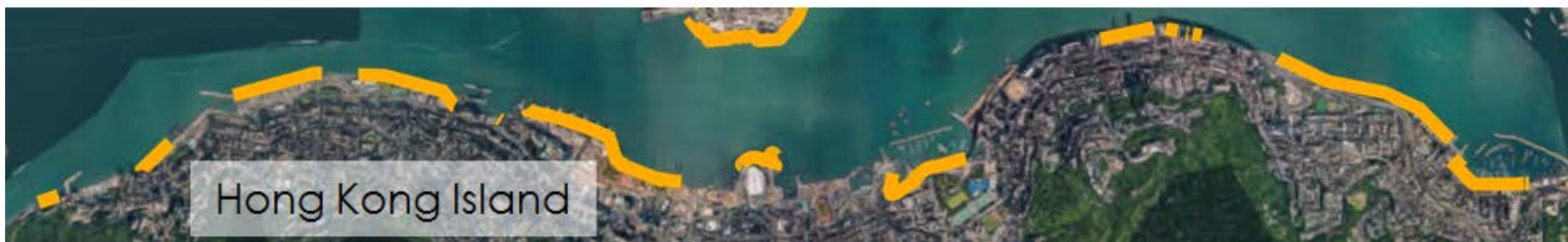
Length of Waterfront Promenade along Hong Kong Island



*The above information is tentative for the time being. When the detailed project scopes are confirmed and technical feasibilities studies and detailed design completed, there would be more up-to-date information on the scope, works programme and funding requirements.

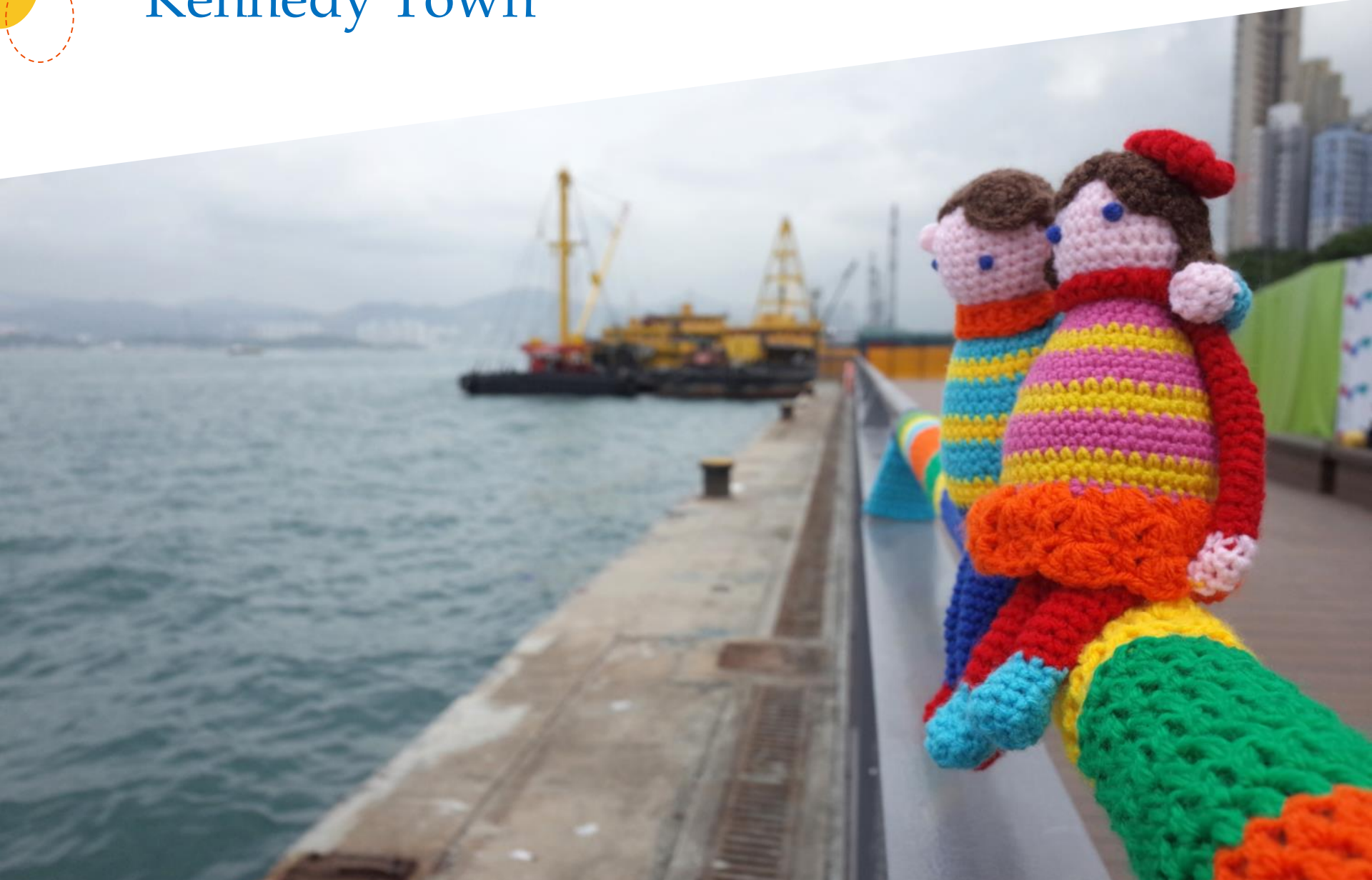
Five Major Sections of Promenade

- Kennedy Town
- Shek Tong Tsui to Sheung Wan
- Central Piers to Wan Chai North
- Wan Chair North to North Point
- Eastern District





Kennedy Town



Latest Progress

Belcher Bay Promenade (Waterfront Section) (172m)

- Site visit on 28 March 2019 and formally opened on 29 March 2019



By early 2020

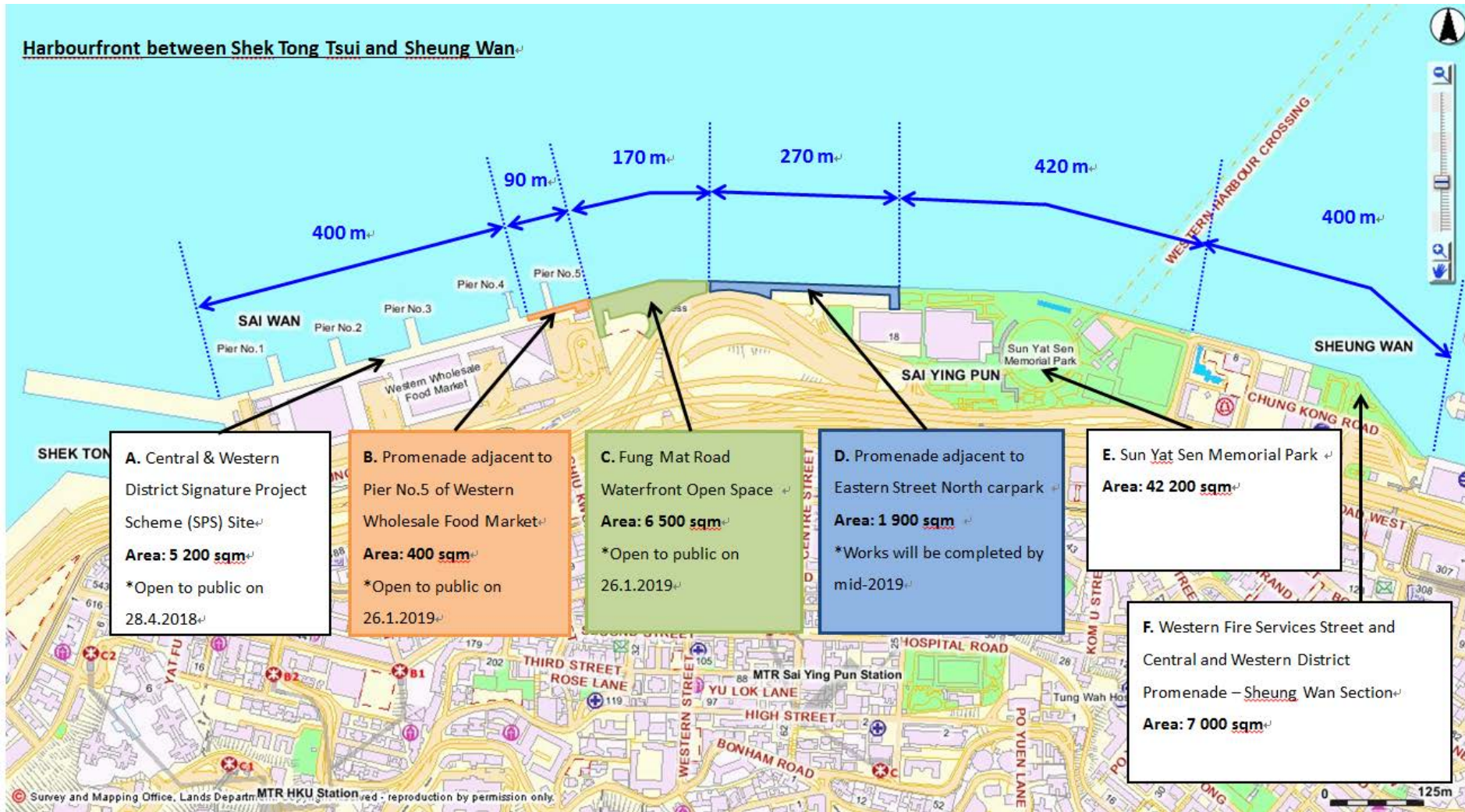


Shek Tong Tsui to Sheung Wan



Latest Progress

Harbourfront between Shek Tong Tsui and Sheung Wan



© Survey and Mapping Office, Lands Department, MTR HKU Station. All rights reserved. reproduction by permission only.

Opening of Share-use Access of Pier 5 of Western Wholesale Food Market and Fung Mut Road Waterfront Open Space in January 2019



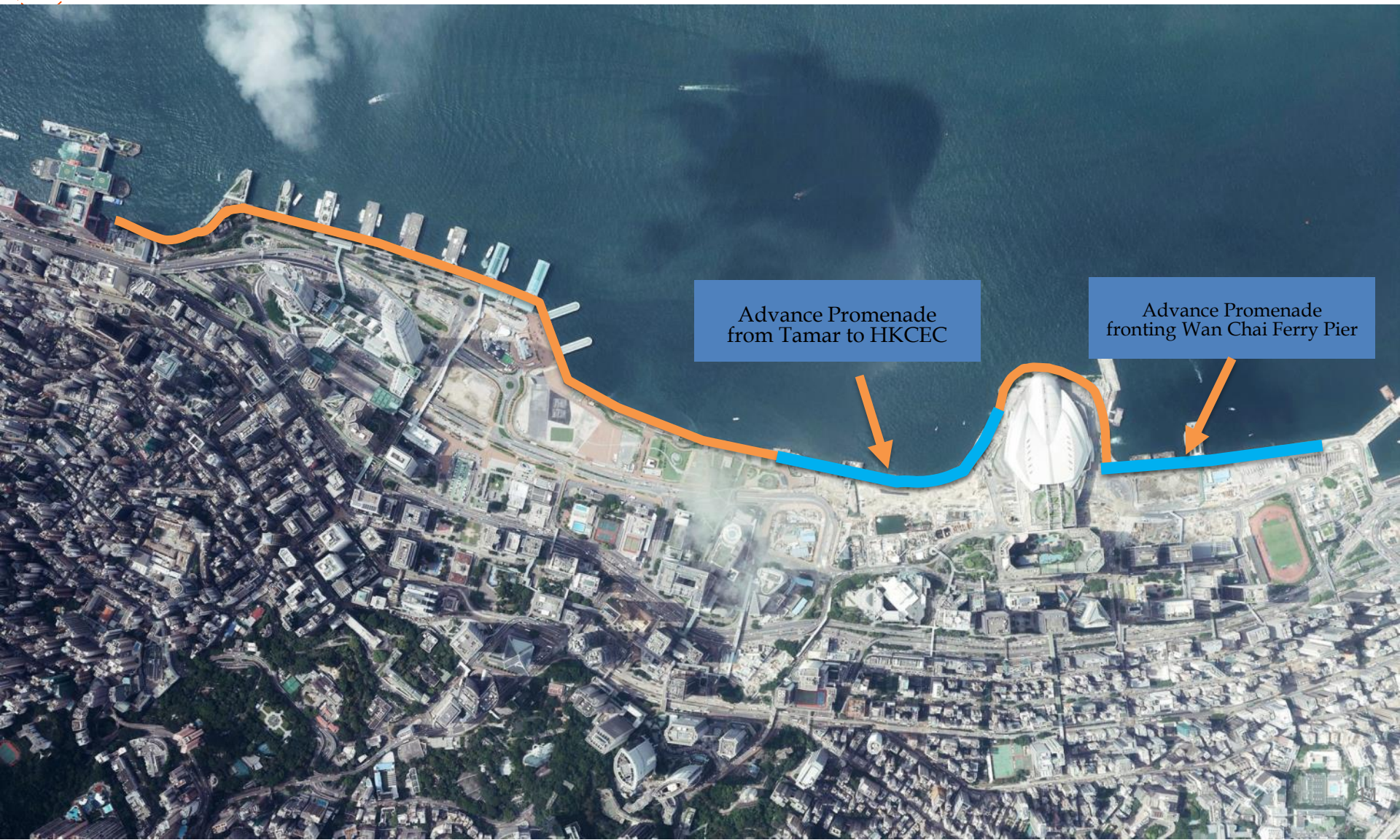


Length of Continuous Promenade

1.8 km

From Shek Tong Tsui to
Sheung Wan
(by mid-2019)

Central to Wan Chai North



Advance Promenade
from Tamar to HKCEC

Advance Promenade
fronting Wan Chai Ferry Pier

Latest Progress

Advance Promenade from Tamar to HKCEC

By Q3 2019

By end 2020



Advance Promenade fronting Wan Chai Ferry Pier





Length of Continuous Promenade

1.4 km (now)

From Central Piers to Tamar Park



2.2 km (Q3-2019)

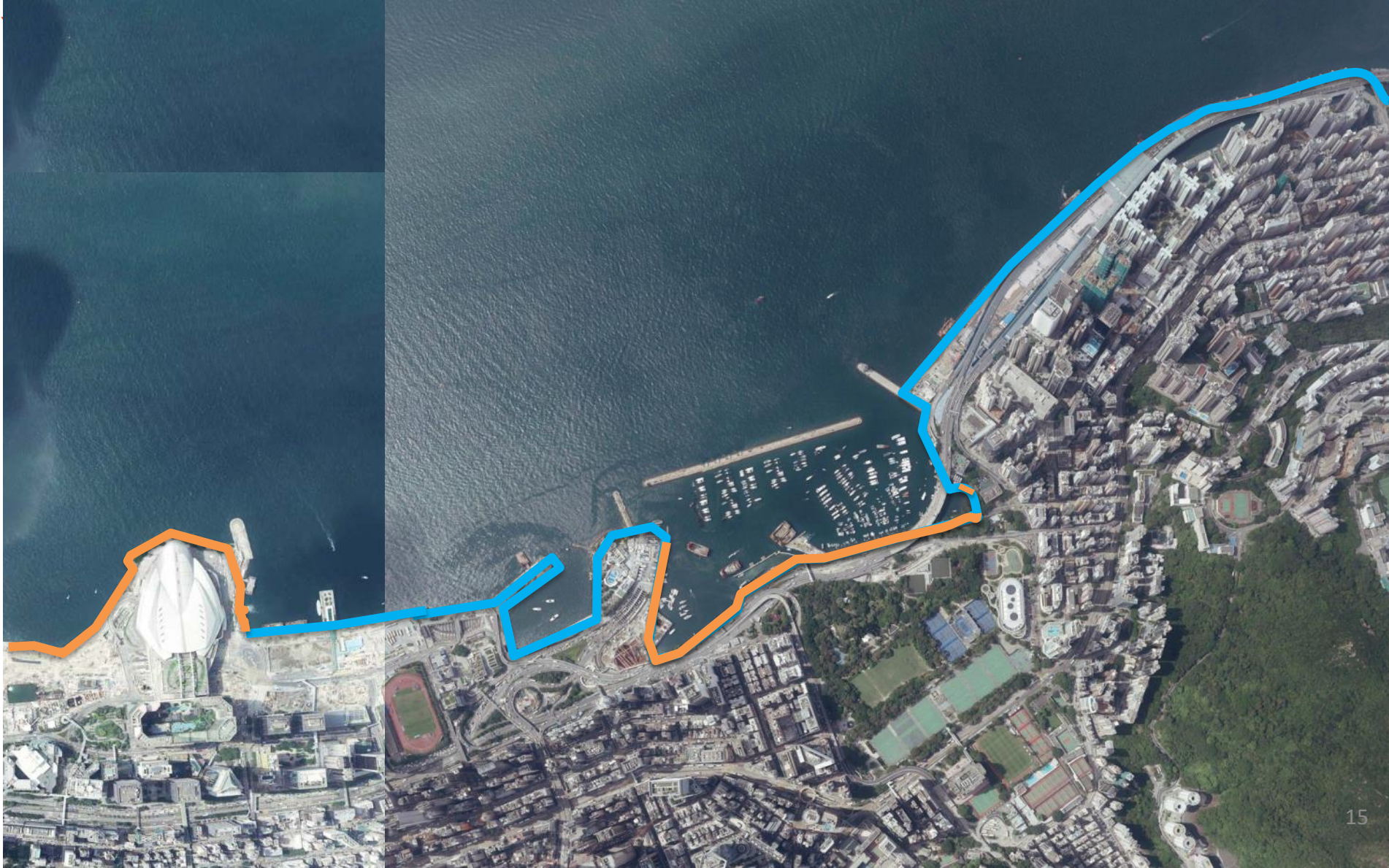
From Central Piers to Golden Bauhinia Square



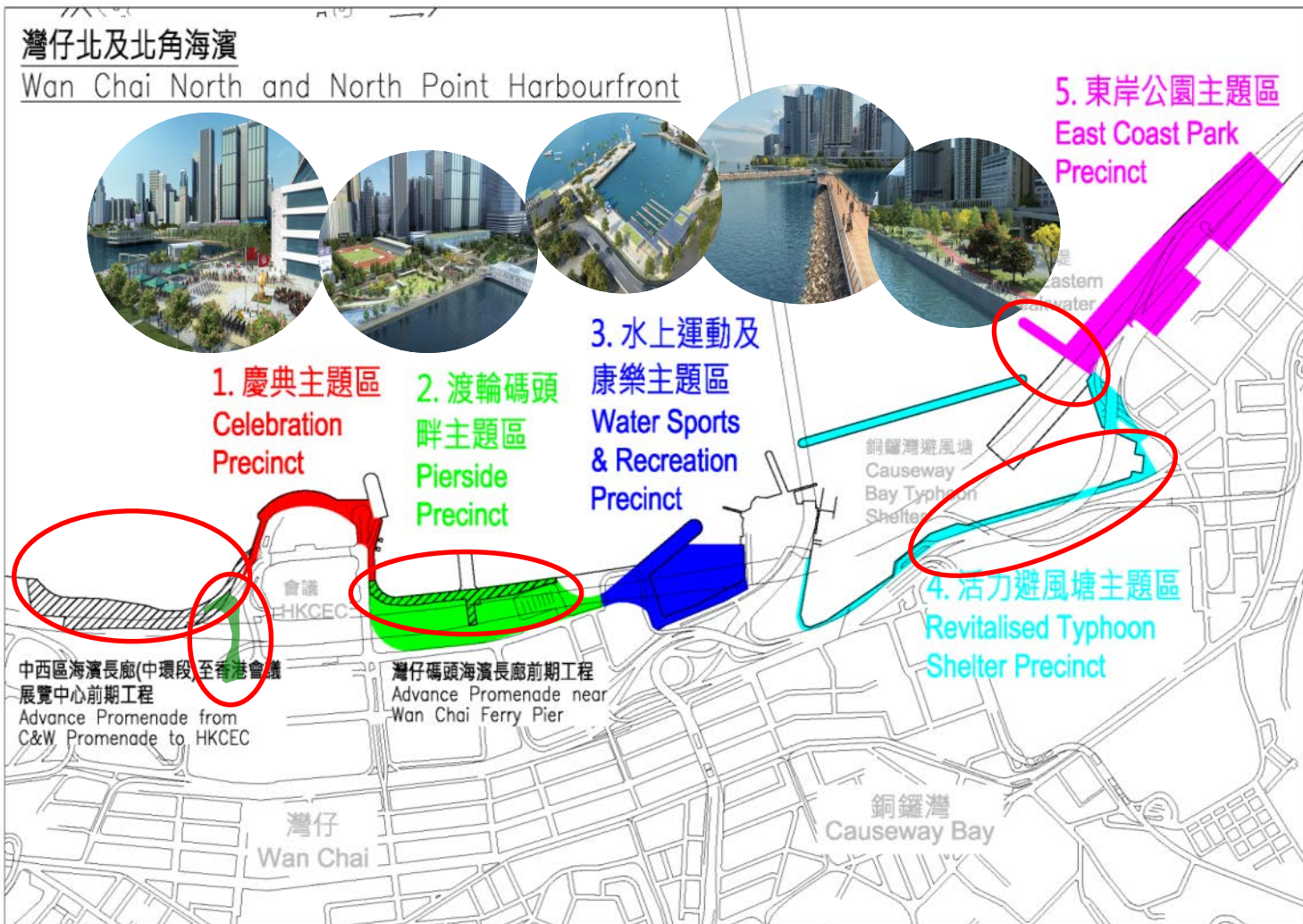
2.6 km (Mid-2021)

From Central Piers to east of Wan Chai Ferry Pier

Wan Chai North to North Point



Key Projects in Coming Years





Length of Continuous Promenade

1.1 km (now)

Causeway Bay Typhoon Shelter



3.2 km (2028)

Completion of all five precincts in Wan Chai North and North Point @

@ With inland pedestrian links at Hung Hing Road and Hing Fat Street

Eastern District



North Point Promenade

Quarry Bay Promenade

Quarry Bay Park

Sai Wan Ho Harbour Park

Aldrich Bay Promenade

Eastern District Cultural Square

Latest Progress

Oil Street Sitting-out Area
Opened in 1Q 2019



Expansion of Oi!
In progress



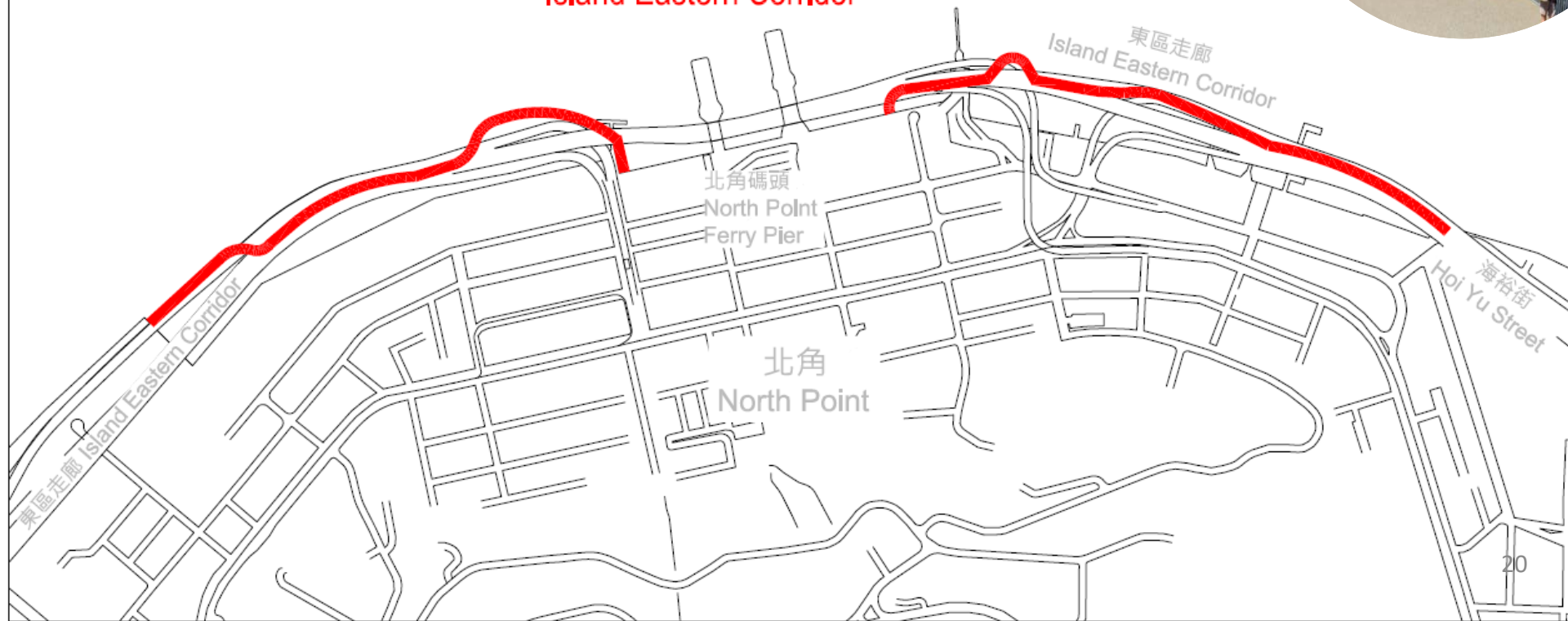
Eastern District Cultural Square
Opened in Mar 2019



North Point Promenade
(Phase 1)
Opened in 4Q 2018 /
Q1 2019

Future Development

6. 東區走廊下的行人板道 Boardwalk Underneath Island Eastern Corridor





Length of Continuous Promenade

2.2 km (now)

From Hoi Yu Street to Aldrich Bay*

* With inland pedestrian link at Grand Promenade



9km (2028)

From Central Piers to Aldrich Bay via Wan Chai North and North Point and IEC Boardwalk®

® With inland pedestrian links at Hung Hing Road, Hing Fat Street and Grand Promenade

Running up to 2028...

目標 2028...



2019-20

Two Advance Promenades in Wan Chai North

灣仔北兩條海濱長廊前期工程

West Landscaped Deck

西園景平台

Revitalised Typhoon Shelter Precinct (Minor Enhancement Works)

活力避風塘主題區 (小型優化工程)

To open certain section
開放部份路段

Detail design
進行詳細設計

To consult the Task Force on the design concepts
就設計概念諮詢專責小組

2021/22

IEC Boardwalk 東區走廊下行人板道

East Coast Park 東岸公園

東岸公園

Eastern Street North 東邊街

To start detailed design
開始詳細設計

To explore early opening of certain part of the site
探討提早開放部份用地

2023/24

Celebration Precinct 慶典主題區

Pierside Precinct 渡輪碼頭畔主題區

Water Sports Precinct 水上運動及康樂主題區

水上運動及康樂主題區

To kick off preparation for Design Competition
籌備設計比賽

To engage and sound out to water sports sector
向水上運動業界收集意見

Key Tasks in 2nd half of 2019

2019年下半年重點工作



Thank you