



Harbourfront Commission

海濱事務委員會

**Annual Report
2010-2011**



VICTORIA HARBOUR
維多利亞港





TABLE OF CONTENTS

| | |
|--|---|
| Chair's Foreword | 2 |
| Part 1 – Establishment and Functions | 3-4 |
| Part 2 – Highlights of Work in 2010-11 | 5-12 |
| Part 3 – Progress of Harbourfront Enhancement Initiatives | 13-22 |
| Part 4 – Looking Ahead | 23-24 |
| Appendices | |
| Appendix I | Terms of Reference |
| Appendix II | Membership |
| Appendix III | Calendar of Events |
| Appendix IV | Summary of the Existing or Short-, Medium- and Long-term Harbourfront Enhancement Projects by the 22 Action Areas |



CHAIR'S FOREWORD

It is my great pleasure to introduce to you the Commission's first annual report of 2010-2011 which captures the work and achievements of HC during its first year of operation.



I am most honoured to have been appointed the first Chairman of the Commission which is an overarching, high-level champion for a whole range of matters regarding Victoria Harbour, Hong Kong's most valued natural asset which has brought the city international recognition as "the Pearl of the Orient". Indeed, Hong Kong's historical development from a small fishing village centuries ago to a metropolis today is closely connected to the Harbour given its economic, social, cultural and recreational values. To this end, the Commission was established to succeed the former Harbour-front Enhancement Committee in working towards our ultimate goal of creating a world-class harbourfront to complement our world-class Harbour.

The Commission is representative of a wide range of community stakeholders, reflecting our aspirations for balanced uses of the Harbour in the overall public interest of Hong Kong. Members include non-official individuals and organisations from various sectors, such as professional institutes, civic and environmental groups and the business sector. Senior government officials, most notably the Secretary for Development and several Department Directors, also join the Commission to provide high-level support to our work.

To facilitate and encourage involvement in harbourfront affairs by all citizens of Hong Kong, we place a high emphasis on the transparency of our work. Our meetings are generally open to the public, and meeting documents are publicly accessible through our website. We have also conducted exchange sessions with the Legislative Council's Subcommittee on Harbourfront Planning as well as site visits and harbour-related events with relevant district councils.

It has been a year since the establishment of the Commission. While three Task Forces have been set up to monitor implementation of projects on a geographical basis, various territory-wide issues and initiatives have also been deliberated at the Commission level. These include the overall land use framework of the harbourfront, water-land interface, water quality, external lighting, harbourfront signage, as well as bringing art to the harbourfront.

Numerous exciting challenges await. I look forward to working closely with you in delivering a world-class harbourfront for all to enjoy.

Mr Nicholas Brooke
Chair, Harbourfront Commission



PART 1 - ESTABLISHMENT AND FUNCTIONS

Harbourfront Commission



The Harbourfront Commission (HC) was established in July 2010 to succeed the former Harbour-front Enhancement Committee (HEC) in advising the Government on harbourfront planning, design, management and other related matters with the objective of fostering and facilitating the development of the Victoria Harbourfront. HC plays an advocacy, oversight and advisory role, and exercises overall coordination and monitoring of all harbourfront matters.

Three geographical Task Forces, namely the Task Force on Harbourfront Developments on Hong Kong Island (“Hong Kong Task Force”), Task Force on Kai Tak Harbourfront Development (“Kai Tak Task Force”) and the Task Force on Harbourfront Developments in Kowloon, Tsuen Wan and Kwai Tsing (“Kowloon Task Force”) have been set up to monitor the implementation of various harbourfront enhancement projects.

The terms of reference of HC and its geographical Task Forces are at [Appendix I](#).

Membership

HC members are appointed by the Chief Executive. There are a total of 28 members in the Commission, comprising the Chairman, the ex-officio Vice-chairman (Secretary for Development), six official Members and 20 non-official Members. The current term of the Commission is three years, from 1 July 2010 to 30 June 2013.

The Commission is widely represented, with representatives nominated by professional institutes, civic and environmental groups and the business sector, as



well as individuals. Senior officials from departments which play important roles in harbourfront matters also joined HC. Pursuant to the former HEC's recommendation, the Secretary for Development took up the Vice Chairmanship.

Apart from HC Members, the three Task Forces also comprise some co-opted Members, with a view to complementing the expertise in the Task Forces while taking into account the membership mix and the skill sets required.

The membership list of HC and its Task Forces are at [Appendix II](#).



PART 2 – HIGHLIGHTS OF WORK IN 2010-11

I. Harbourfront Commission

Meetings

The Commission meets regularly to discharge its functions. Between July 2010 and June 2011, a total of five Commission meetings were held. A wide range of harbourfront matters was discussed, such as land use framework for the harbourfront, commercial port operations and facilities in the harbour, water quality of the harbour, water-land interface, etc.



Site Visits

To give Members a full background of the existing situation of our Victoria harbourfront and to facilitate their deliberations over future enhancement proposals, HC conducted three site visits to major harbourfront sites guided by relevant government bureaux /departments.

The first site visit was conducted on 18 August 2010 to the harbourfront areas on Hong Kong Island, including the Western Wholesale Food Market, Central Reclamation Phase III, Hoi Yu Street waterfront in Quarry Bay, and the Shipyard and Wholesale Fish Market in Shau Kei Wan. There was also a presentation on the Urban Design Study for the new Central harbourfront.



The second site visit was conducted on 3 September 2010 to the Kai Tak Development, including the Cruise Terminal site, the upstream end of Kai Tak Approach Channel, the Kai Tak River, the Lung Tsun Stone Bridge and the North Apron Stage 1 Site.



The third site visit was conducted on 13 September 2010 to the harbourfront areas in Kowloon, Tsuen Wan and Kwai Tsing, including the Tsing Yi Promenade, Tsing Yi Northeast Park, West Kowloon Waterfront Promenade, Hung Hom Waterfront, Hoi Sham Park and Kwun Tong Promenade Stage 1.



Brainstorming Workshops

HC held two brainstorming workshops on strategic planning for the harbour on 4 June 2011 and 23 July 2011 respectively. In the first workshop, non-official HC members prepared action plans for six opportunity areas with suggested potential uses and for inclusion in one comprehensive strategic plan. The second workshop was joined by official HC members for more detailed deliberations. The findings of the two workshops will be further discussed at future meetings of HC.

Informal Exchange Sessions with the Legislative Council's Subcommittee on Harbourfront Planning

1st Session – 24 SEPTEMBER 2010

At the first Informal Exchange Session, HC Chair introduced its remits and work to the Subcommittee members. Members from the Subcommittee and HC exchanged views on the development of continuous waterfront promenades at both sides of the Harbour, the application of public-private collaboration on future harbourfront projects, and the possibility of establishing a harbourfront authority in the future.

2nd Session – 9 JULY 2011

At the 2nd informal exchange session, the HC Chair summarised HC's work and accomplishments since its establishment. The Subcommittee also shared its observations on waterfront management after its duty visit to Boston, New York and Vancouver between 24 April and 1 May 2011, including different development models for waterfront enhancement projects, planning and design based on multiple functions, integration, connecting people to the waterfront and sustainability, and different modes of public engagement

A calendar of events is at **Appendix III**.



II. The Geographical Task Forces

Hong Kong Task Force

Chair's Word



Speeding up access to, and enjoyment of, the harbourfront is a common aspiration of HC and the public. To this end, the Hong Kong Task Force has therefore provided advice and support to the delivery of two quick-win projects i.e. advance promenades at both the New Central Harbourfront and Hoi Yu Street at Quarry Bay.

The Task Force also worked closely with the government to explore the possibility of Public-Private Collaboration (PPC) for the development of Site 4 and Site 7 (in whole or in part) on the New Central Harbourfront. Indeed, both the former HEC and HC recommended the wider application of PPC in Hong Kong in the context of harbourfront development and flexible ongoing management. We wish to capture the creativity and professional knowledge of the private sector to secure more innovative design options and management models, with a view to creating a vibrant, green, accessible and sustainable harbourfront for public enjoyment.

Apart from the New Central Harbourfront, another upcoming opportunity area for harbourfront enhancement on Hong Kong Island is the eastern harbourfront, for which various proposals have been put forward in a feasibility study by the Planning Department scheduled for completion by end 2011. The proposed 2-kilometre-long boardwalk underneath the Island East Corridor, in particular, has received broad support of the community, including that of HC. The Task Force will spare no efforts in providing further advice to the Government in taking forward the proposals.

Mr Nicholas BROOKE
Chair, Hong Kong Task Force



Hong Kong Task Force (Cont'd)

Meetings

The Hong Kong Task Force held six meetings between August 2010 and July 2011. Members discussed the following issues / projects:

| Date of Meeting | Agenda Item |
|------------------------|--|
| 16 September 2010 | ● Exterior Design of Tunnel Buildings of the Central-Wan Chai Bypass and Island Eastern Corridor Link |
| | ● Hoi Yu Street Advance Waterfront Promenade |
| 6 October 2010 | ● Scope of Works for Site 7 Development in the New Central Harbourfront |
| 2 December 2010 | ● Hong Kong Island East Harbour-front Study |
| | ● Proposed Time Extension – Temporary Government Land Allocation (TGLA) GLA-THK 1059 – Marine Police Regional Headquarters and Marine Police Harbour Division Base, Tai Hong Street, Sai Wan Ho, Hong Kong |
| 27 January 2011 | ● Update on the Business Viability Study for Development of Site 4 in the New Central Harbourfront |
| | ● Western Wholesale Food Market |
| | ● Public Engagement Programme for the Construction of Additional Floors above Central Piers Numbers 4 to 6 |
| | ● Exterior Design of Tunnel Buildings of the Central-Wan Chai Bypass and Island Eastern Corridor Link |
| 11 April 2011 | ● Amendments to the Draft Kennedy Town and Mount Davis Outline Zoning Plan |
| | ● Action Areas Proposals |
| 25 May 2011 | ● A Proposal to Erect Advertisements on Marsh Road Station Building in Wanchai |
| | ● Proposed Rooftop Signage at CITIC Tower, No. 1 Tim Mei Avenue, Central |
| | ● Proposed Use of Advertising Frame on Rooftop of Central Pier No. 3 |
| | ● Application for Licence of the Advertising Area on Portion of Rooftop of the Pedestrian Subway at Connaught Road, Central, Hong Kong |
| | ● Refurbishment and Modification of the Island West Transfer Station at Kennedy Town, Hong Kong |
| | ● Design for the Hoi Yu Street Advance Promenade |

Having advised several proposals for erecting rooftop advertisement signage, the Task Force also drew up a checklist for considering similar proposals in future.



Kai Tak Task Force

Chair's Word

Kai Tak Development (KTD) is among the few pieces of large-scale virgin land at the Victoria Harbourfront. Taking full advantage of this unique flexibility, the Civil Engineering and Development Department's Kai Tak Office (KTO) put forward various urban design enhancement proposals such as the relocation of vehicular roads from the harbourfront at the former runway and the south apron to provide vehicle-free promenades and at the same time release more harbourfront land for open space development.



The water body of the Kai Tak Approach Channel and Kwun Tong Typhoon Shelter, being surrounded on three sides by the harbourfront land of KTD, offers some interesting opportunities for recreational water activities. In this regard, the Task Force has recently discussed a proposal to develop the KTD into an international water sports venue. The Task Force expressed support for the proposal in principle on the understanding that it would facilitate enjoyment of the harbour by the general public in addition to serving the water sports community. We also noted that the proposal would fit in with one of the planning intentions of Kai Tak Development as a sports hub of Hong Kong and the general principle of bringing vibrancy to the harbourfront.

The Task Force has also been consulted by two private developers on their proposed redevelopment schemes for submission to the Town Planning Board. Upon redevelopment, 20-metre-wide waterfront promenades will be provided through setbacks of the building masses.

All these aspects, set out above, are welcoming signs of KTD to become a piece of high quality harbourfront in Hong Kong. The Task Force certainly looks forward to its continuous development in the years to come, and will continue to work closely with the Government and other stakeholders in this regard.

Mr Vincent NG
Chair, Kai Tak Task Force



Kai Tak Task Force (Cont'd)

Meetings

The Kai Tak Task Force held five meetings between August 2010 and July 2011. Members discussed the following issues / projects:

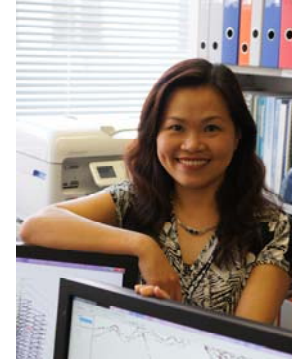
| Date of Meeting | Agenda Item |
|------------------------|--|
| 7 September 2010 | ● Urban Design Framework for Kai Tak Development |
| | ● Enhancements of Accessibility to Kai Tak Waterfront |
| 23 November 2010 | ● Residential Development at 1-5 Kai Hing Road, Kai Tak South |
| | ● "Building our Kai Tak River" public engagement |
| | ● Enhancement of waterfront accessibility at Former Runway |
| 11 January 2011 | ● Enhancement of waterfront accessibility in South Apron |
| | ● First Phase of Runway Park at Kai Tak |
| 31 March 2011 | ● First Phase of Runway Park at Kai Tak |
| | ● Stage 2 Public Engagement on the Preservation of Lung Tsun Stone Bridge Remnants |
| | ● Residential Development at 1-5 Kai Hing Road, Kai Tak South |
| | ● Residential Development at 7 Kai Hing Road, Kai Tak South |
| | ● Voices and Appeals from South Tokwawan Area near Kai Tak |
| 1 June 2011 | ● Urban Design Enhancements Proposals at Kai Tak |
| | ● First Phase of Runway Park at Kai Tak |
| | ● Kwun Tong Promenade Stage 2 Development |
| | ● Proposed Uses of Two Areas at Kwun Tong Ferry Pier, Kwun Tong, Kowloon |
| | ● Residential Development at 7 Kai Hing Road, Kai Tak South |



Kowloon Task Force

Chair's Word

Last year, our Task Force held six meetings and deliberated on various harbourfront projects and initiatives, including the Lei Yue Mun Waterfront Enhancement Project, Tsim Sha Tsui Piazza project, Hung Hom Waterfront Promenade Initial Development, and proposed temporary uses of the West Kowloon Cultural District. The Task Force was also briefed by private sector proponents on their development schemes and subsequently presented our views to the Town Planning Board for consideration.



In evaluating all these proposals, we made reference to the Harbour Planning Principles formulated by the former Harbour-front Enhancement Committee. Moreover, the dedicated participation of various stakeholders in harbourfront matters has been instrumental to our success in providing directions and advice to the visiting project teams from multiple perspectives.

Our Task Force will continue to spare no efforts in helping Hong Kong realise our ultimate dream of a world-class Victoria Harbourfront!

Professor Becky LOO
Chair, Kowloon Task Force



Kowloon Task Force (Cont'd)

Meetings

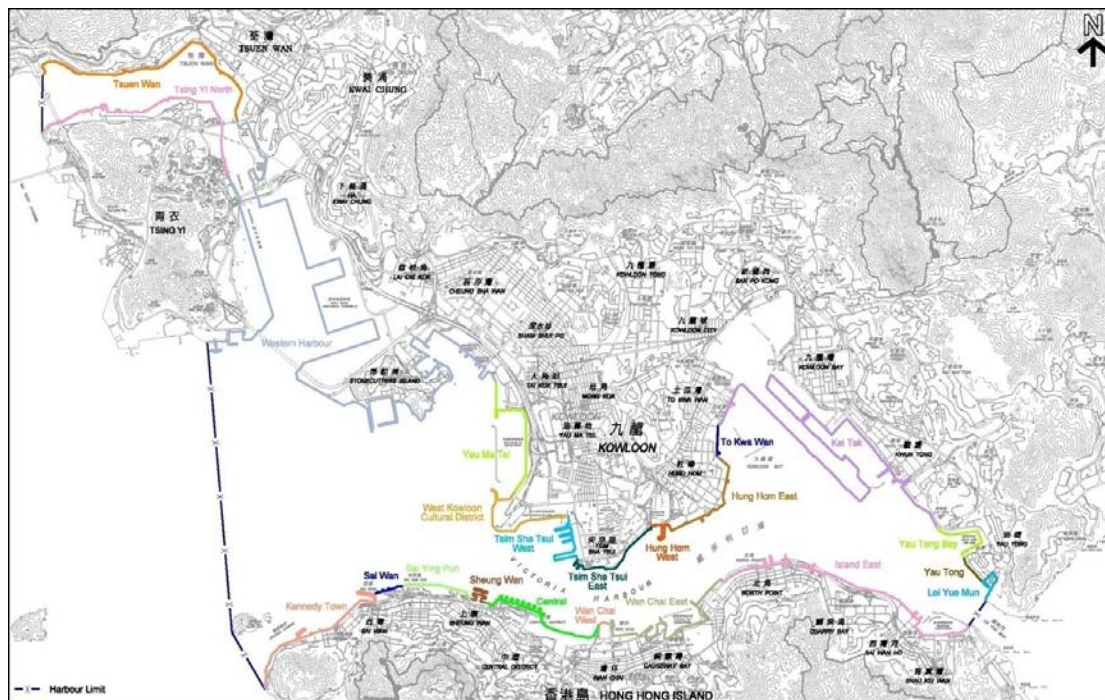
The Kowloon Task Force held six meetings between August 2010 and July 2011. Members discussed the following issues / projects:

| Date of Meeting | Agenda Item |
|------------------------|--|
| 4 October 2010 | ● Lei Yue Mun Waterfront Enhancement Project |
| | ● West Kowloon Cultural District – Stage 2 Public Engagement Exercise |
| | ● Proposed Conversion of An Existing Industrial Building to Hotel and Shop and Services Uses, 428 Cha Kwo Ling Road, Yau Tong, Kowloon |
| | ● Kwun Tong Line Extension - Temporary Barging Facility at Hung Hom Freight Pier |
| 29 November 2010 | ● Cheung Sha Wan Wholesale Food Market |
| 12 January 2011 | ● Open Space at ex-Tai Kok Tsui Bus Terminus, Hoi Fai Road, Tai Kok Tsui |
| | ● Construction of a Two-storey Building for Harbour Patrol Section of Marine Department |
| | ● Lei Yue Mun Waterfront Enhancement Project |
| | ● Action Areas Proposals |
| 16 March 2011 | ● Proposed District Revitalisation with Minor Relaxation of Building Height and Plot Ratio Restrictions in the "Comprehensive Development Area" Zoning at Yau Tong Bay |
| | ● Discussion on the Amendments to the Approved South West Kowloon Outline Zoning Plan No. S/K20/24 |
| | ● Initial Development of Hung Hom Waterfront Promenade |
| | ● Improving Directional Signage from Nathan Road and Salisbury Road to the Harbourfront at Tsim Sha Tsui |
| | ● Cycle Track between Tsuen Wan and Tuen Mun |
| 31 May 2011 | ● Temporary Use of the West Kowloon Cultural District Site |
| | ● The Tsim Sha Tsui Star Ferry Pier: Restoration and Revitalisation |
| | ● Refurbishment and Modification of the West Kowloon Transfer Station at Ngong Shung Road, Kowloon |
| 27 July 2011 | ● Construction of a Two-storey Building for Harbour Patrol Section – Report by Dr Peter Cookson Smith and Mr Paul Zimmerman on Site Meeting with Marine Department |
| | ● The Way Forward for the "Development of a Piazza in Tsim Sha Tsui" Project |



PART 3 – PROGRESS OF HARBOURFRONT ENHANCEMENT INITIATIVES

Over the past few years, through the concerted and focused efforts of various parties, a number of harbourfront enhancement projects have already been completed and opened for public enjoyment.



On the basis of the enhancement suggestions put forth by the former HEC for the 22 action areas along the harbour, HC and its task forces have continued to advise on and take forward the short-, medium- and long-term enhancement projects during its first year of operation.

Short-term Initiatives

1. Initial development of Hung Hom Waterfront Promenade *(opened to the public in September 2011)*

This project is one of the "quick-wins" identified by the former HEC as a temporary measure to improve the waterfront for early public enjoyment.

The project site is zoned Open Space ("O") in the Hung Hom Outline Zoning Plan and of about 24m-wide and 500m-long. It was previously fenced off and pedestrian access was not allowed. After completion of the project, a 4 km-long continuous waterfront





promenade has been formed at the heart of the city spanning from Laguna Verde in Hung Hom to Star Ferry Pier in Tsim Sha Tsui.

About two-thirds of the width of the site is landscaped (mainly with lawn together with some trees and shrubs). The remaining area of the site is used for the provision of a jogging trail and a footpath. The promenade is managed by LCSD and opened for public enjoyment round-the-clock.

The project team led by the Civil Engineering and Development Department briefed the Kowloon Task Force at its meeting on 16 March 2011. The Task Force welcomed the project. Some further suggestions raised at the meeting included putting a sculpture as an attraction landmark on the promenade, provision of a continuous tree cover, improving the design of rain shelters and benches, putting the lawn area into active uses, retaining the existing kiosk near Hung Hom Ferry Pier, facilitating fishing activity through railing design, promoting the opening of the promenade to community organisations, etc.

The Kowloon Task Force also supported the Development Bureau's initiative of producing a walking map for citizens and visitors to showcase the 4-km long waterfront promenade from Hung Hom to Tsim Sha Tsui to both local and overseas visitors.

2. Advance promenade at the new Central harbourfront (including the Green Carpet fronting the Tamar Development)

(scheduled for completion in early 2012)



According to the current works schedule, the Central Reclamation Stage III (CRIII) works will be completed by end 2011 while the development of the permanent waterfront promenade is under study. To enable early enjoyment of the waterfront by the public and tourists as soon as possible, the Government commenced the Advance Promenade works to develop a part of the waterfront area of CRIII and an extension area fronting the Tamar Development.

The project team led by the Civil Engineering and Development Department briefed the Hong Kong Task Force at its meetings on 6 October 2010 and 2 December 2010 respectively. Members welcomed the latest design, and suggested providing food and beverage facilities/ temporary kiosks at the eastern end of the advance promenade, providing adequate enabling facilities such as water and electricity supplies for hosting activities, placing statues or arts work on the open deck in front of Tamar, building more shelter along the



promenade, etc.

3. Advance promenade at Hoi Yu Street in Quarry Bay (scheduled for completion in late 2012)

Hoi Yu Street runs along the harbourfront in Quarry Bay, leading from North Point Police Station to the west and connecting the existing waterfront promenade of Quarry Bay Park (Phase I) to the east. Part of the Hoi Yu Street harbourfront was originally used as a temporary public barging point and became vacant after removal of the barging point in March 2009.



Following the Eastern District Council's suggestion, the Government has established an inter-departmental project team to develop an advance promenade at Hoi Yu Street with a view to beautifying the area prior to the permanent development of the site, which is being reviewed under the ongoing Hong Kong Island East Harbour-front Study. Earlier this year, the New Hong Kong Tunnel Company Limited (incumbent operator of the Eastern Harbour Crossing) voluntarily surrendered the waterfront land strip in front of its ventilation building for the development of a passageway to realise connectivity of the promenade.

The project team led by the Development Bureau briefed the Hong Kong Task Force at its meetings on 16 September 2010 and 25 May 2011 respectively. The Task Force was generally supportive of the early implementation of the project. Suggestions made at the meetings included a review of the number and outlook of the arbours, provision of car parks and lay-bys at the vacant land nearby to cater for the need of visitors by car, etc.

4. Temporary land uses at West Kowloon Cultural District



Part of the West Kowloon Cultural District (WKCD) site has been left largely vacant and unused pending the formulation of a detailed development plan. While a development plan will be submitted to the Town Planning Board later as planned, the statutory processes and site availability dictate that construction of the Phase 1 WKCD facilities will not begin



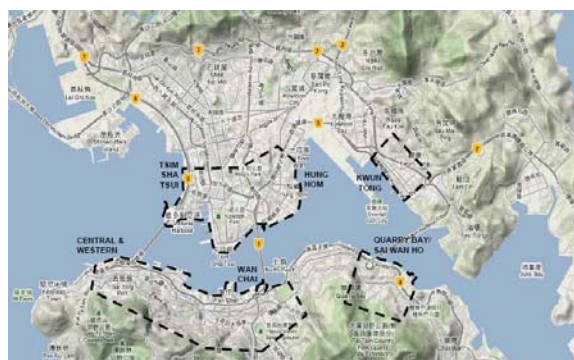
until some time in 2013-2014, with facilities coming on stream starting from 2015-2016.

Temporary uses of the WKCD site in the interim period before commencement of Phase 1 construction in 2013-2014 will have a number of merits such as providing opportunities for various events, getting people used to visiting the site and raising public awareness of the future uses of the site.

The WKCD Authority briefed the Kowloon Task Force on their preliminary proposals for temporary uses at its meeting on 31 May 2011. The initiative was welcomed by Members. Suggestions raised at the meeting included exploring water access to the WKCD site, charging concessionary rates for young artists/cultural groups, transforming from temporary use to the future cultural district by progressive tree planting and installation of permanent facilities, etc.

5. Harbourfront Signage Scheme *(scheduled for completion in late 2012)*

To improve accessibility of the harbourfront, a dedicated, consistent, easy to read harbourfront signage system will be implemented to complement the existing signage system under the Tourism Commission's Visitor Signage Improvement Scheme (VSIS).



The boundary of Victoria Harbour straddles nine districts in Hong Kong. As a quick-win and new attempt, the Harbourfront Signage Scheme will be launched in six pilot districts (i.e. Central & Western, Wanchai, Eastern, Kwun Tong, Kowloon City and Yau Tsim Mong). Subject to its effectiveness and feedback from the public / tourists, the Scheme could be extended to the rest of the harbour districts in due course.

The project team led by the Development Bureau briefed HC and the Kowloon Task Force at their meetings on 21 December 2010 and 16 March 2011 respectively. Members generally supported the initiative. Suggestions raised at the meetings included integrating the new harbourfront signage system with the existing signage systems of subways, footbridges and MTR stations.



6. Kai Tak Runway Park Phase 1
(scheduled for completion in mid-2013)



The Park is part of the Kai Tak Development. It is located at the tip of the former airport runway and adjacent to the Cruise Terminal Building, with spectacular scenic views of Victoria Harbour overlooking Lei Yue Mun and Kwun Tong.

Phase 1 of the Park, when completed, will form an at-grade extension of the landscape deck at the rooftop of the Cruise Terminal Building. The current plan is to provide mainly passive facilities in the first phase while major building structures such as the cafe/restaurant, additional aviation-theme features and service buildings will be developed in the later phase.

The project team led by the Leisure and Cultural Services Department (LCSD) briefed the Kai Tak Task Force at its meetings on 11 January 2011, 31 March 2011 and 1 June 2011 respectively. Taking into account Members' views, the latest scheme for phase one development included an enlarged lawn area and a simplified design to reduce abortive works and allow greater flexibility for phase two development. Some soft landscape will also be provided around the weather station at the tip of the former runway in order to better integrate it with the Park.

Medium- and Long-Term Proposals

HC has also been actively taking forward various medium- and long-term harbourfront enhancement options. Owing to a number of factors such as the actual circumstances of the sites, the implementation details and timetable of these projects will have to be further worked out.

7. Kwun Tong Promenade Stage 2

According to the Kai Tak Outline Zoning Plan No. S/K22/2, the existing Kwun Tong Public Cargo Working Area (PCWA) is zoned "open space". It is the Government's plan to turn the area into a waterfront promenade upon decommissioning of the PCWA.



Situated at the southwestern shore of the Kwun Tong waterfront, the Stage 2



promenade will link up with Stage 1 promenade in providing an area of open space for enjoyment by local residents, tourists, and other visitors. It will provide a continuous traffic-free pedestrian corridor connecting to open spaces in the Kai Tak Development and form part of the promenade extending from Cha Kwo Ling to Ma Tau Kok.

The project team led by LCSD briefed the Kai Tak Task Force at its meeting on 1 June 2011. Suggestions raised at the meeting included measures to enhance collective memory of local residents, provision of water access and water-related activities, utilization of the area underneath the Kwun Tong Bypass, provision of cycling track, etc.

8. Open Space Development at ex-Tai Kok Tsui Bus Terminus



Yau Tsim Mong District is a densely populated area. In recent years, various private residential developments in the West Kowloon Reclamation area have been completed, resulting in further population intake. Development of the subject site to address local demand for open space is indeed strongly supported by local residents and Yau Tsim Mong District Council.

The project team led by LCSD briefed the Kowloon Task Force at its meeting on 12 January 2011. Members generally appreciated the design theme and gave comments on the provision of play equipment, adoption of a barrier-free design, arrangement of hedges, and design of the covered exhibition area, etc. Members also suggested improving public transport provision with a view to facilitating visits by people of a wider area.

9. Western Wholesale Food Market

There are five piers within the Western Wholesale Food Market (WWFM). Of the five piers, only Pier No. 5 is still in operation and the remaining four are left idle. The Development Bureau has been working with relevant bureaux and departments in exploring ways to optimise the uses of the four unused piers of the WWFM and the harbourfront area fronting the piers.



Pending long-term development, the Government has, in collaboration with the



Central and Western District Council (C&WDC), conducted some activities in the WWFM. For example, the WWFM Flea Market cum Carnival in the Market held in January 2011.

AFGD briefed the Hong Kong Task Force and the full Commission at their meetings on 27 January 2011 and 18 July 2011 respectively. Members considered that while the wholesale market might justifiably remain at the harbourfront due to its mode of operation, it could be made more attractive and interesting as well as partially opened up to the public where practicable, having regard to practicability, financial feasibility, safety, etc. Members noted that the WWFM Flea Market cum Carnival had been a success and supported holding similar events in future.

10. Lei Yue Mun Waterfront Enhancement Project



Lei Yue Mun (LYM) has a rich heritage as a former fishing village and is conveniently situated in the urban area. With its rustic setting and famous seafood cuisine, LYM is popular among visitors and locals. In 2003, the Tourism Commission (TC) completed a series of minor improvement works in LYM, including renovation of the LYM Sitting-out Area, repaving of the footpath serving the seafood restaurants, construction of a "Pai Lau", and provision of a taxi stand and coach laybys.

To further enhance the attractiveness of LYM and respond to the aspirations of local residents and business operators, TC plans to further improve the facilities along the LYM waterfront area. Considering that the existing natural setting of LYM with its rocky shoreline is very attractive and should be respected, the latest design of the enhancement project has been drawn up with a view to preserving the indigenous character of LYM as a fishing village as far as possible.

TC briefed the Kowloon Task Force at its meetings on 4 October 2010 and 12 January 2011 respectively. Issues including water quality, the squatter area, the project cost, sequencing of works, commitment of locals on implementation of sewerage improvement measures, etc, were discussed. The Task Force supported the project and considered that it should be implemented as part of an overall upgrading work of LYM that also addresses sewerage and other issues.

11. Hong Kong Island East Harbour-front Study

The Hong Kong Island East Harbour-front Study (HKIEHS), conducted by the Planning Department (PlanD), aims to formulate a comprehensive plan for the



enhancement of the Hong Kong Island East harbourfront areas, focusing on the connectivity and accessibility to the harbourfront. The whole study is scheduled for completion by end 2011.

PlanD and its consultant briefed the Hong Kong Task Force at its meetings on 2 December 2010 and 30 August 2011 respectively. The Task Force supported the proposals and advised that priority should be given to the proposed streetscape enhancement works, boardwalk under the Island Eastern Corridor and Sky Trail. It further suggested that the relevant Government bureaux and departments should commence preparation work with a view to taking forward the proposals as soon as practicable.



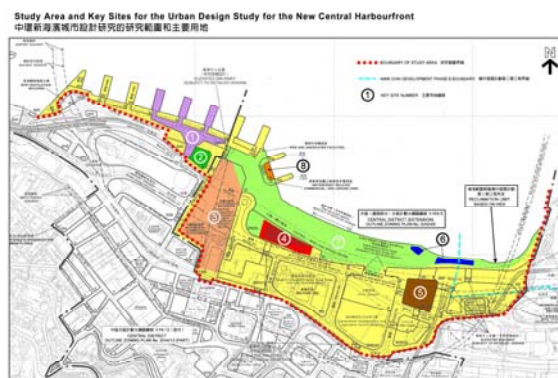
A summary of all the existing or short-, medium- and long-term harbourfront enhancement projects by the 22 Action Areas (provided by the Development Bureau) is at [Appendix IV](#).

Other Achievements

Public-Private Collaboration and Management Models

Both the former HEC and HC recommend a wider application of public-private collaboration (PPC) in Hong Kong in the context of harbourfront development and management. The aim is to capture the creativity and professional knowledge of the private sector for more innovative design options and flexible management models, with a view to creating a vibrant, green, accessible and sustainable harbourfront for public enjoyment.

Sites 4 and 7 of the New Central Harbourfront

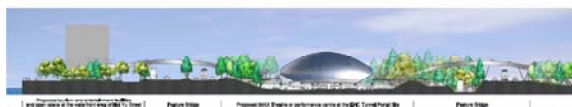


HC and the Hong Kong Task Force have worked closely with the Government in supervising the work of the consultant commissioned to explore the possibility of developing Sites 4 and 7 (in whole or in part) by PPC. A market sounding exercise was completed at the end of June 2011, and the views of the private sector on the development of Sites 4 and 7 by PPC are being analyzed.



Waterfront at Hoi Yu Street, Quarry Bay

The preferred option of the ongoing HKIEHS is to develop the Quarry Bay waterfront into a regional entertainment hub by way of PPC. This covers the advance promenade site at Hoi Yu Street, the two adjoining sites currently zoned "Other Specified Uses" annotated "Cultural and/or Commercial, Leisure and Tourism Related Uses", and the nearby site above the Eastern Harbour Crossing Tunnel Portal. In taking forth this project in future, reference will be made to the final recommendations of the HKIEHS scheduled for completion by end 2011.



Promotion and Publicity for the Harbour

Apart from identifying and implementing various harbourfront enhancement initiatives, HC has endeavoured to promote the harbourfront on both sides of Victoria Harbour.

Victoria Harbour Icon Design Competition

A Victoria Harbour icon design competition, co-organised by DEVB, the Civil Engineering and Development Department and HC, was launched in early 2011, inviting the general public, secondary school and university/tertiary students to create a unique and dedicated icon for Victoria Harbour. Response from the public was encouraging - over 800 entries were received. The winning entry was announced at the prize giving ceremony held on 4 July 2011. HC was actively involved throughout the event, with Members serving as part of the Organizing Committee and the Jury Panel as well as providing written comments on the entries for the Jury Panel's consideration prior to the formal adjudication.



The winning icon of the competition has become the official icon of Victoria



Harbour. It will be used for the Harbourfront Signage Scheme currently under planning to guide locals and tourists to nearby harbourfront promenades and open spaces with a view to improving harbourfront accessibility. The harbour icon will also be used on other promotional tools, such as posters, banners and souvenirs of harbourfront-related events for marketing Victoria Harbour as a unique brand of Hong Kong.



Among the large number of entries, one has also been selected as the official logo for HC. It will be adopted in stationary such as business cards, letterheads and envelopes for Members' use.





PART 4 – LOOKING AHEAD

HC has been a very active advisory body since its establishment a year ago. The full Commission and the three task forces have discussed a wide range of topics on harbourfront and given comments on quite a number of government and private development projects along Victoria Harbour in the light of the Harbour Planning Principles. Such efforts will continue.

4th Task Force on Water-land Interface

Having regard to the government departments' presentations on the land-use framework of the harbourfront and the commercial port operations and facilities in the harbour, as well as the Harbour Business Forum's "Study on Water-land Interface", HC has decided to establish a new Task Force on Water-land Interface to assist the Commission in reviewing and exploring holistically and strategically issues concerning water-land interface. This 4th Task Force on Water-land Interface has been set up in November 2011.

Harbourfront Authority

The Task Group on Management Model for the Harbourfront under the former HEC recommended in its report that the Government could in the long run establish an independent, statutory and dedicated authority for harbourfront planning, design, operation and management. HC will continue to actively explore the matter with the Government and advise the way forward.

Continuous Public Engagement

There are ongoing initiatives to enhance the harbourfront. Throughout the planning and implementation of harbourfront enhancement projects, continuous public engagement is of utmost importance for ensuring that harbourfront developments indeed meet the needs and aspirations of the citizens of Hong Kong.

During its first year of operation, HC has conducted exchange sessions with the Legislative Council's Subcommittee on Harbourfront Planning as well as site visits and harbour-related events with relevant district councils. It has also supported a number of design competitions for harbourfront areas organized by various district councils in the capacities of co-organisers, adjudicators, etc.

In the coming year, HC will continue to proactively engage the public through various platforms such as exchange sessions/forum and interact with the wider community. It will also welcome presentations by the public on their concerns and aspirations.

HC will endeavor to work closely with the Government and the public in taking forward the enhancement measures at both sides of the harbour. It is our ultimate goal to create a world-class harbourfront for the people of Hong Kong, and in this



process, ensure that a balanced approach is adopted such that the views of stakeholders and the community at large are duly considered.

- END -



APPENDICES



Appendix I

Terms of Reference of the Harbourfront Commission

The Harbourfront Commission is set up to –

- (a) play an advocacy, oversight and advisory role in the envisioning, planning, urban design, marketing and branding, development, management and operation of the harbourfront areas and facilities on a continuous and ongoing basis;
- (b) exercise overall coordination and monitoring of harbourfront planning, urban design, development and management to ensure effective integration of these major aspects; and
- (c) foster and encourage the development, management and maintenance of the harbourfront through a wide range of contractual entrustment / partnership arrangements with the private sector (including the community, social enterprises and non-governmental organisations).



Terms of Reference of the three Geographical Task Forces

The Task Force is set up –

- (a) to provide comments on and monitor the planning, land/marine use, urban design and implementation of harbourfront development proposals;
- (b) to advocate harbourfront enhancement measures and projects and advise on their implementation strategies;
- (c) to advise on suitable management models for harbourfront sites, with a view to proactively fostering partnership with the non-governmental sector including the local District Councils, commercial enterprises, social enterprises, community-based trusts, special purpose companies and other non-governmental organisations;
- (d) to advise or organise public engagement activities regarding the planning and urban design of harbourfront development projects; and
- (e) to promote the harbourfront to locals and visitors through marketing and branding efforts.

The Task Force shall report to the Harbourfront Commission on its recommendations and progress on a regular basis.



Appendix II

Members of the Harbourfront Commission in 2010-11

Chairman: Mr Nicholas BROOKE

Vice-Chairman: Secretary for Development

| Non-official Members (Organisations) | Represented by | Alternate |
|---|--------------------------|---------------------------|
| Business Environment Council | Mrs Margaret BROOKE | Dr Andrew THOMSON |
| Chartered Institute of Logistics and Transport in Hong Kong | Prof Becky LOO Pui-ying | Mr LEUNG Kong-yui |
| Conservancy Association | Mr LAM Kin-lai | Mr SO Kwok-yin |
| Friends of the Earth | Prof Carlos LO Wing-hung | Dr Frederick LEE Yok-shiu |
| Hong Kong Institute of Architects | Mr Andy LEUNG Kit-man | Mr Franklin YU |
| Hong Kong Institute of Landscape Architects | Mr Leslie CHEN Hung-chi | Mr Patrick LAU Hing-tat |
| Hong Kong Institute of Planners | Mr TAM Po-yiu | Ms PONG Yuen-yee |
| Hong Kong Institute of Surveyors | Dr Paul HO Hok-keung | Mr Francis LAM Ka-fai |
| Hong Kong Institute of Urban Design | Dr Peter Cookson SMITH | Dr Sujata GOVADA |
| Hong Kong Institution of Engineers | Ir Peter WONG Yiu-sun | Ir Dr CHAN Fuk-cheung |
| Real Estate Developers Association of Hong Kong | Mr Louis LOONG Hon-biu | Mr Shuki LEUNG Shu-ki |
| Society for Protection of the Harbour | Mr Winston CHU Ka-sun | Mr Paul ZIMMERMAN |

Non-official Members (Individuals)

Mr Benjamin CHA Yiu-chung

Mr CHAN Hok-fung

Ms Dilys CHAU Suet-fung

Ms Lily CHOW

Mr Eric FOK Kai-shan

Mr Clement KWOK King-man

Mr Vincent NG Wing-shun

Ms SO Lai-chun

Official Members

Commissioner for Tourism or his representative

Commissioner for Transport or his representative

Director of Civil Engineering and Development or his representative

Director of Leisure and Cultural Services or her representative

Director of Marine or his representative

Director of Planning or his representative

Secretary: Principal Assistant Secretary for Development (Harbour)



Members of the Hong Kong Task Force in 2010-11

Chairman: Mr Nicholas BROOKE

| Non-official Members (Organisations) | Represented by | Alternate |
|---|---------------------------|--------------------------|
| Business Environment Council | Dr Andrew THOMSON | Mrs Margaret BROOKE |
| Chartered Institute of Logistics and Transport in Hong Kong | Mr LEUNG Kong-yui | Prof Becky LOO Pui-ying |
| Conservancy Association | Mr LAM Kin-lai | Mr SO Kwok-yin |
| Friends of the Earth | Dr Frederick LEE Yok-shiu | Prof Carlos LO Wing-hung |
| Hong Kong Institute of Architects | Mr Andy LEUNG Kit-man | Mr Franklin YU |
| Hong Kong Institute of Landscape Architects | Mr Leslie CHEN Hung-chi | Mr Patrick LAU Hing-tat |
| Hong Kong Institute of Planners | Mr TAM Po-yiu | Ms PONG Yuen-yee |
| Hong Kong Institute of Surveyors | Dr Paul HO Hok-keung | Mr Francis LAM Ka-fai |
| Hong Kong Institute of Urban Design | Dr Peter Cookson SMITH | Dr Sujata GOVADA |
| Hong Kong Institution of Engineers | Ir Dr CHAN Fuk-cheung | Ir Peter WONG Yiu-sun |
| Real Estate Developers Association of Hong Kong | Mr Louis LOONG Hon-biu | Mr Shuki LEUNG Shu-ki |
| Society for Protection of the Harbour | Mr Paul ZIMMERMAN | Mr Winston CHU Ka-sun |

Non-official Members (Individuals)

Mr Benjamin CHA Yiu-chung

Mr CHAN Hok-fung

Ms Lily CHOW

Mr Eric FOK Kai-shan

Mr Vincent NG Wing-shun

Co-opted Members

Ms Joanne CHAN Jo-win

Mr David CHAN Wai-ming

Mr LAM Cheuk-yum

Ms Patricia OR Siu-ngam

| Official Members | Represented by | Alternate |
|--|---|---|
| Development Bureau | Deputy Secretary (Planning and Lands) 1 | Principal Assistant Secretary (Harbour) |
| Tourism Commission | Assistant Commissioner for Tourism 2 | Senior Manager (Tourism) 2 |
| Transport Department | Chief Traffic Engineer/ Hong Kong | --- |
| Civil Engineering and Development Department | Chief Engineer/Hong Kong 1 | Chief Engineer/Hong Kong 2 |
| Leisure and Cultural Services Department | Assistant Director (Leisure Services) 2 | --- |
| Marine Department | To attend on a need basis | |
| Planning Department | District Planning Officer/ Hong Kong | --- |

Secretary: Assistant Secretary for Development (Harbour) 1



Members of the Kai Tak Task Force in 2010-11

Chairman: Mr Vincent NG Wing-shun

| Non-official Members (Organisations) | Represented by | Alternate |
|---|--|--|
| Business Environment Council | Mrs Margaret BROOKE | Dr Andrew THOMSON |
| Chartered Institute of Logistics and Transport in Hong Kong | Mr LEUNG Kong-yui | Prof Becky LOO Pui-ying |
| Conservancy Association | Mr LAM Kin-lai | Mr SO Kwok-yin |
| Friends of the Earth | Prof Carlos LO Wing-hung | Dr Frederick LEE Yok-shiu |
| Hong Kong Institute of Architects | Mr Andy LEUNG Kit-man | Mr Franklin YU |
| Hong Kong Institute of Landscape Architects | Mr Patrick LAU Hing-tat | Mr Leslie CHEN Hung-chi |
| Hong Kong Institute of Planners | Mr TAM Po-yiu | Ms PONG Yuen-ye |
| Hong Kong Institute of Urban Design | Dr Peter Cookson SMITH | Dr Sujata GOVADA |
| Hong Kong Institution of Engineers | Ir Dr CHAN Fuk-cheung | Ir Peter WONG Yiu-sun |
| Society for Protection of the Harbour | Mr Winston CHU Ka-sun | Mr Paul ZIMMERMAN |
| Non-official Members (Individuals) | | |
| Mr Nicholas BROOKE | | |
| Mr Benjamin CHA Yiu-chung | | |
| Ms Lily CHOW | | |
| Ms Ann SO Lai-chun | | |
| Co-opted Members | | |
| Mr Sam FARRANDS | | |
| Ms Connie LAM Suk-ye | | |
| Ms Vivian LAU Sio-kuan | | |
| Official Members | Represented by | Alternate |
| Development Bureau | Deputy Secretary (Planning and Lands) ¹ and Deputy Secretary (Works) ² | Principal Assistant Secretary (Harbour) and Principal Assistant Secretary (Works) ² |
| Tourism Commission | Assistant Commissioner for Tourism ⁴ | Senior Manager (Tourism) ⁴¹ |
| Transport Department | Assistant Commissioner/Urban | --- |
| Civil Engineering and Development Department | Head (Kai Tak Office) | Chief Engineer/Kowloon ¹ |
| Leisure and Cultural Services Department | Assistant Director (Leisure Services) ¹ | --- |
| Marine Department | To attend on a need basis | |
| Planning Department | District Planning Officer/Kowloon | --- |

Secretary: Assistant Secretary for Development (Harbour)²



Members of the Kowloon Task Force in 2010-11

Chairman: Professor Becky LOO Pui-ying

| Non-official Members (Organisations) | Represented by | Alternate |
|---|--|---|
| Business Environment Council | Mrs Margaret BROOKE | Dr Andrew THOMSON |
| Chartered Institute of Logistics and Transport in Hong Kong | Prof Becky LOO Pui-ying (Task Force Chairman) | Mr LEUNG Kong-yui |
| Friends of the Earth | Prof Carlos LO Wing-hung | Dr Frederick LEE Yok-shiu |
| Hong Kong Institute of Architects | Mr Franklin YU | Mr Andy LEUNG Kit-man |
| Hong Kong Institute of Landscape Architects | Mr Leslie CHEN Hung-chi | Mr Patrick LAU Hing-tat |
| Hong Kong Institute of Planners | Ms PONG Yuen-yee | Mr TAM Po-yiu |
| Hong Kong Institute of Urban Design | Dr Peter Cookson SMITH | Dr Sujata GOVADA |
| Hong Kong Institution of Engineers | Ir Peter WONG Yiu-sun | Ir Dr CHAN Fuk-cheung |
| Society for Protection of the Harbour | Mr Paul ZIMMERMAN | Mr Winston CHU Ka-sun |
| Non-official Members (Individuals) | | |
| Mr Nicholas BROOKE | | |
| Ms Dilys CHAU Suet-fung | | |
| Co-opted Members | | |
| Mr Stefan AL | | |
| Dr HO Siu-kee | | |
| Ms Ida LAM Choi-chu | | |
| Official Members | Represented by | Alternate |
| Development Bureau | Deputy Secretary (Planning and Lands) ¹ | Principal Assistant Secretary (Harbour) |
| Tourism Commission | Assistant Commissioner for Tourism ² | Senior Manager (Tourism) ² |
| Transport Department | Chief Traffic Engineer/Kowloon | --- |
| Civil Engineering and Development Department | Chief Engineer/Kowloon ² | Senior Engineer/District Monitoring Group on Housing Sites & Special Duties (Kowloon) |
| Leisure and Cultural Services Department | Assistant Director (Leisure Services) ¹ | --- |
| Marine Department | To attend on a need basis | |
| Planning Department | Assistant Director/Territorial | Chief Town Planner/Studies and Research |

Secretary: Senior Town Planner/Studies and Research 3, Planning Department



Appendix III

Calendar of Events

| Date | Events / Meetings |
|-------------------|--|
| 21 July 2010 | 1 st Harbourfront Commission (HC) Meeting |
| 18 August 2010 | Site Visit to Harbourfront Areas on Hong Kong Island |
| 3 September 2010 | Site Visit to Kai Tak Development |
| 7 September 2010 | 1 st Kai Tak Task Force (KTTF) Meeting |
| 13 September 2010 | Site Visit to Harbourfront Areas in Kowloon, Tsuen Wan and Kwai Ching |
| 16 September 2010 | 1 st Hong Kong Task Force (HKTF) Meeting |
| 24 September 2010 | 1 st Informal Exchange Session with the Legislative Council's Subcommittee on Harbourfront Planning |
| 4 October 2010 | 1 st Kowloon Task Force (Kln TF) Meeting |
| 6 October 2010 | 2 nd HKTF Meeting |
| 25 October 2010 | 2 nd HC Meeting |
| 23 November 2010 | 2 nd KTTF Meeting |
| 29 November 2010 | 2 nd Kln TF Meeting |
| 2 December 2010 | 3 rd HKTF Meeting |
| 21 December 2010 | 3 rd HC Meeting |
| 11 January 2011 | Launching of Victoria Harbour Icon Design Competition 3 rd KTTF Meeting |
| 12 January 2011 | 3 rd Kln TF Meeting |
| 27 January 2011 | 4 th HKTF Meeting |
| 9 February 2011 | 4 th HC Meeting |
| 16 March 2011 | 4 th Kln TF Meeting |
| 31 March 2011 | 4 th KTTF Meeting |
| 11 April 2011 | 5 th HKTF Meeting |
| 17 May 2011 | 5 th HC Meeting |
| 25 May 2011 | 6 th HKTF Meeting |
| 31 May 2011 | 5 th Kln TF Meeting |
| 1 June 2011 | 5 th KTTF Meeting |
| 4 June 2011 | 1 st Brainstorming Workshop on Strategic Planning for the Harbour |
| 4 July 2011 | Prize Giving Ceremony of Victoria Harbour Icon Design Competition |
| 9 July 2011 | 2 nd Informal Exchange Session with the Legislative Council's Subcommittee on Harbourfront Planning |
| 23 July 2011 | 2 nd Brainstorming Workshop on Strategic Planning for the Harbour |
| 27 July 2011 | 6 th Kln TF Meeting |



Appendix IV

Summary of the Existing or Short-, Medium- and Long-term Harbourfront Enhancement Projects by the 22 Action Areas

(Provided by the Development Bureau)

| | Action Area | Existing or Planned Short-term Harbourfront Enhancement Initiatives | Medium to Longer Term Improvements |
|---|--------------|--|---|
| 1 | Kennedy Town | <ul style="list-style-type: none"> • There is a temporary playground at Sai Ning Street with an area of about 0.62 hectares. There are two seven-a-side hard-surface soccer pitches and one basketball court on the site. • Reprovisioning of the Kennedy Town Swimming Pool from Smithfield to Shing Sai Road. Phase I of the works has been completed and opened to the public in May 2011. Phase II of the works is scheduled for completion in 2016. | <ul style="list-style-type: none"> • The Planning Department (PlanD) is now reviewing the land use of the western part of Kennedy Town. The review is anticipated to be completed in early 2012. While its land use is yet to be finalised, the preliminary planning concept proposes that the waterfront area from Sai Ning Street to Cadogan Street will be reserved and designated for the development of a waterfront promenade and an open space for public enjoyment. • The PlanD and other departments concerned (including the Transport Department etc.) are now identifying a suitable site in the area for reprovisioning the existing bus terminus at Shing Sai Road in order to vacate land for use as an open space for public enjoyment. |
| 2 | Sai Wan | <ul style="list-style-type: none"> • N.A. | <ul style="list-style-type: none"> • There are five piers within the Western Wholesale Food Market (WWFM). Of the five piers, only Pier No. 5 is still in operation and the remaining four are left idle. The Development Bureau is working with the bureaux and departments concerned to explore ways of optimising the uses of the four unused piers of the WWFM and the harbourfront area fronting the piers. • Pending the long-term development programme, the Government will, in collaboration with the Central and Western District Council (C&WDC), conduct various activities in the WWFM. For example, the C&WDC and the |



| | Action Area | Existing or Planned Short-term Harbourfront Enhancement Initiatives | Medium to Longer Term Improvements |
|---|--------------|--|---|
| | | | Agriculture, Fisheries and Conservation Department jointly held the Western Wholesale Food Market Flea Market cum Carnival in the Market in January 2011. |
| 3 | Sai Ying Pun | <ul style="list-style-type: none"> With an area of about five hectares, the Sun Yat Sen Memorial Park and Swimming Pool Complex comprises a 375-metre long promenade (the park area of the promenade is 220-metre long and the swimming pool area 155-metre long). The park area was opened to the public in June 2010. The swimming pool complex is anticipated to be completed and opened to the public in late 2011. The Central and Western District Promenade – Sheung Wan Section was opened to the public in November 2009. The pedestrian link along the harbourfront between Sun Yat Sen Memorial Park and the Central and Western Promenade – Sheung Wan Section was opened to the public in June 2010. | <ul style="list-style-type: none"> It is planned to widen the pedestrian link along the harbourfront between Sun Yat Sen Memorial Park and the Central and Western Promenade – Sheung Wan Section. |
| 4 | Sheung Wan | <ul style="list-style-type: none"> N.A. | <ul style="list-style-type: none"> Improvement of at-grade footpath along the harbourfront via negotiation with the private owner. |
| 5 | Central | <ul style="list-style-type: none"> Fronting the Central Piers No. 1 to No. 8 is the Central Pier Waterfront. Additional 1.5 floors above Central Piers Nos. 4, 5 and 6 subject to a height restriction of 25mPD for restaurant, retail and other waterfront-related uses. Half of the area of the roof will be used as open space for public enjoyment. The project is anticipated to be commenced before the end of 2012 and completed in 2015. Open Space fronting Central Piers | <ul style="list-style-type: none"> Sites 1 and 2 of the new Central harbourfront will be developed into a mixed-use precinct for cultural and entertainments uses through PPC. As works associated with the Central-Wan Chai Bypass (CWB) will be carried out at various parts of these two sites up till July 2015, the development will take some time to materialise. |



| | Action Area | Existing or Planned Short-term Harbourfront Enhancement Initiatives | Medium to Longer Term Improvements |
|---|-----------------------|--|--|
| | | <p>No. 9 and No. 10 was opened to the public in July 2010.</p> <ul style="list-style-type: none"> The advance promenade at the new Central harbourfront includes the construction of a 500-metre long walkway along the harbourfront to link up Central Pier No.10 with the open space to the north of the Tamar Development. The project is anticipated to be completed in early 2012. We are exploring whether Sites 4 and 7 (in whole or in part) of the new Central harbourfront can be developed by public-private collaboration (PPC). | |
| 6 | Wan Chai West | <ul style="list-style-type: none"> The Wan Chai Temporary Promenade is currently located to the north of the Hong Kong Convention and Exhibition Centre. | <ul style="list-style-type: none"> Development of Wan Chai waterfront upon completion of works of Wanchai Development Phase II (WDII) and CWB. |
| 7 | Wan Chai East | <ul style="list-style-type: none"> N.A. | <ul style="list-style-type: none"> Development of Wan Chai waterfront upon completion of works of WDII and CWB. |
| 8 | Hong Kong Island East | <ul style="list-style-type: none"> The temporary waterfront promenade along the eastern part of the ex-North Point Estate site was opened to the public in June 2010. The Hoi Yu Street Advance Promenade is anticipated to be completed at the end of 2012 for public use. The Quarry Bay Park (Phase I) is provided with a promenade of about 640-metre long for public use. The Aldrich Bay Promenade (including the promenade walkway) was completed and opened in 2003. The Aldrich Bay Park was opened to the public in April 2011. | <ul style="list-style-type: none"> The future developer of the ex-North Point Estate site (private sector development) will be required to provide a promenade of 20-metre in width for public enjoyment as required in the relevant planning brief. The PlanD is conducting the Hong Kong Island East Harbour-front Study (HKIEHS) and will take into account the views collected in the Stage 3 Public Engagement Programme in finalising the study recommendations. We will make reference to the study recommendations in further considering a proposed boardwalk underneath the Island Eastern Corridor and any improvement works to be carried out for the North Point Pier. In the long run, we plan to develop |



| | Action Area | Existing or Planned Short-term Harbourfront Enhancement Initiatives | Medium to Longer Term Improvements |
|----|--------------|--|--|
| | | | the Hoi Yu Street Advance Promenade site, the two adjoining sites which are currently zoned "Other Specified Uses" annotated "Cultural and/or Commercial, Leisure and Tourism Related Uses" and the nearby site above the Eastern Harbour Crossing Tunnel Portal together by PPC. We will make reference to the recommendations of the HKIEHS when taking forth this project. |
| 9 | Lei Yue Mun | <ul style="list-style-type: none"> For the Lei Yue Mun Waterfront Enhancement Project under planning, its scope of works includes the construction of a public landing facility-cum-waterfront promenade and other streetscape improvement works. | <ul style="list-style-type: none"> N.A. |
| 10 | Yau Tong | <ul style="list-style-type: none"> N.A. | <ul style="list-style-type: none"> The PlanD is now reviewing the zoning of the "Comprehensive Development Area" ("CDA") in Yau Tong Industrial Area, with an objective to split up the existing "CDA" in order to expedite the pace of redevelopment, and will make recommendations for harbourfront enhancement. |
| 11 | Yau Tong Bay | <ul style="list-style-type: none"> N.A. | <ul style="list-style-type: none"> Under the requirements of "CDA" zone of Yau Tong Bay, the private developer is required to provide a public waterfront promenade with a minimum width of 15 metres and a total area of not less than 2.47 hectares within the site. |
| 12 | Kai Tak | <ul style="list-style-type: none"> The Kai Tak development is in full swing. Under the development plan, a promenade of about 11-kilometre long will be provided for public use. The first section of the 200-metre long Kwun Tong Promenade Stage 1 located next to the Kwun Tong Public Cargo Working Area (PCWA) was opened in January 2010 for public use. | <ul style="list-style-type: none"> In the site zoned "Commercial (2)", "CDA" and "Residential (Group A)1" annotated "Promenade", the private developer is required to construct a 20-metre wide promenade for public enjoyment. The Kwun Tong PCWA will be closed later in 2011. Preparation work for the development of Kwun Tong Promenade Stage 2 has been commenced. |



| | Action Area | Existing or Planned Short-term Harbourfront Enhancement Initiatives | Medium to Longer Term Improvements |
|----|---------------|--|--|
| | | <ul style="list-style-type: none"> The first phase development of Kai Tak Runway Park located next to the Cruise Terminal building is under preparation. A landscaped platform will be provided at the roof of the Cruise Terminal building. It is anticipated to be opened to the public in 2013. | |
| 13 | To Kwa Wan | <ul style="list-style-type: none"> The waterfront open space project at Ma Tau Kok is under preparation. The initial concept of development includes provision of a green promenade and a landscaped theme garden with rain shelters, pavilion and seats etc. The leisure path at the harbourfront outside To Kwa Wan Vehicle Examination Centre and next to King Wan Street was opened to the public in July 2010. | <ul style="list-style-type: none"> N.A. |
| 14 | Hung Hom East | <ul style="list-style-type: none"> Beautification Works of the Tai Wan Shan Park (Promenade) was completed in April 2009. The Hung Hom Waterfront Promenade (Initial Development) of about 500-metre long was opened to the public in September 2011. Upon opening of the promenade, the waterfront of about 4-kilometre long from Star Ferry Pier in Tsim Sha Tsui to Laguna Verde in Hung Hom will be connected. Members of the public can use the ramp next to Harbourfront Horizon and the footbridge in Salisbury Road to travel between Tsim Sha Tsui East and Hung Hom waterfronts. | <ul style="list-style-type: none"> To conduct study of the development of Tsim Sha Tsui Promenade (Extension) together with Hung Hom Promenade and the open space to the west of Kin Wan Street. A public transport interchange will be included in the development of "CDA(1)" at the harbourfront in future so as to vacate the land currently occupied by Hung Hom Bus Terminus to build a district park. |
| 15 | Hung Hom West | <ul style="list-style-type: none"> N.A. | <ul style="list-style-type: none"> According to the recommendations of the Hung Hom District Study, the International Mail Centre and MTRC Freight Yard will be relocated in the long term; and the harbourfront land can be |



| | Action Area | Existing or Planned Short-term Harbourfront Enhancement Initiatives | Medium to Longer Term Improvements |
|----|--------------------|--|---|
| | | | developed into a waterfront area with a wide range of tourist facilities and attractions including hotel, retail, waterfront promenade and leisure uses. |
| 16 | Tsim Sha Tsui East | <ul style="list-style-type: none"> Proposed development of the vicinity of Tsim Sha Tsui Star Ferry Pier into a new tourism node, which will be integrated with two projects, i.e. the proposed open piazza and the revitalisation of the Tsim Sha Tsui Pier. In this future tourism node, we may consider showcasing the area's history as a land and sea transport hub so that both the public and visitors can reminisce about the history of this vicinity. | <ul style="list-style-type: none"> Consider enhancing the cultural facilities of the Leisure and Cultural Services Department (LCSD) at the harbourfront at Tsim Sha Tsui, such as consider enhancement/improvement to the Hong Kong Museum of Art and explore the feasibility of turning the existing catering facilities into alfresco dining facing Victoria Harbour. |
| 17 | Tsim Sha Tsui West | <ul style="list-style-type: none"> N.A. | <ul style="list-style-type: none"> There are mainly private properties in the Action Area. Enhancement of connectivity to the West Kowloon Cultural District (WKCD) relies on private sector participation. |
| 18 | WKCD | <ul style="list-style-type: none"> The West Kowloon Waterfront Promenade with an area of about 3.4 hectares is located within the WKCD site for public use. The WKCD Authority plans to organise programmes and activities at a suitable portion of the WKCD site before commissioning of the Phase 1 core arts and cultural facilities. The WKCD Authority is considering organising arts exhibitions, performances and display of WKCD information in the form of Arts Pavilion; as well as outdoor and/ or large scale activities at open site(s). To attract visitors of different backgrounds and interests to WKCD, part of the land could be used for commercial activities, for example wine and dine festival, ancillary food and beverage facilities, etc. | <ul style="list-style-type: none"> Upon completion of the WKCD, public open space of not less than 23 hectares will be provided, including a continuous promenade of about 2-kilometres in length from the east to the west, so as to allow public access to the Victoria Harbour. According to the Notes of the South West Kowloon Outline Zoning Plan, the width of the promenade should not be less than 20 metres. |



| | Action Area | Existing or Planned Short-term Harbourfront Enhancement Initiatives | Medium to Longer Term Improvements |
|----|-----------------|--|---|
| 19 | Yau Ma Tei | <ul style="list-style-type: none"> Waterfront promenade/ open space has been provided by several private housing developments (Hampton Place, The Long Beach and One SilverSea) in Tai Kok Tsui under the lease conditions for public enjoyment. The remaining part of the promenade (i.e. the waterfront of the development at Kowloon Inland Lot No. 11146) will also be constructed by the developer under the lease conditions, which is expected to be completed by 2012. The open space project at ex-Tai Kok Tsui Bus Terminus is under preparation. | <ul style="list-style-type: none"> In view of the strong demand for the New Yaumatei PCWA by the trade, the Administration has no plan to close or relocate it. In the long run, the Administration will explore ways to improve pedestrian facilities linking the Tai Kok Tsui waterfront in the north and WKCD in the south on the condition that the operation of the PCWA will not be affected. Possible development of a new waterfront promenade for public use upon successful rezoning of a vacant site of about 200-metre long to the north of Yau Ma Tei typhoon shelter to "Open Space" use. |
| 20 | Western Harbour | <ul style="list-style-type: none"> N.A. | <ul style="list-style-type: none"> Reserved for port-related development in the long run. |
| 21 | Tsuen Wan | <ul style="list-style-type: none"> Except for the section of waterfront fronting Tsuen Wan 5 West Rail property development project, a public waterfront promenade has been provided from Riviera Gardens to Bayview Garden. Besides, the Tsuen Wan Park, which occupies an area of about 6.9 hectares, and the Tsuen Wan Riviera Park, which occupies an area of 4.3 hectares, were opened for public use. The Civil Engineering and Development Department plans to construct a 22-kilometre long cycle track mainly along the harbourfront between Tsuen Wan and Tuen Mun. Subject to the approval of funding, the first phase of the construction works for the section between Tsing Tsuen Bridge and Bayview Garden will commence in 2013 the earliest. It is anticipated that the construction works will be completed in two years. | <ul style="list-style-type: none"> The section of the public waterfront promenade fronting the West Rail property development will be constructed by the developer. |



| | Action Area | Existing or Planned Short-term Harbourfront Enhancement Initiatives | Medium to Longer Term Improvements |
|----|--------------------|---|--|
| 22 | Tsing Yi | <ul style="list-style-type: none">• With an area of 5.6 hectares, the Tsing Yi Northeast Park located at Tam Kon Shan Road was opened to the public in June 2010. The promenade in the Park is linked with the waterfront promenade fronting a number of public and private housing estates along the northeastern coast of Tsing Yi, and is extended to Cheung Fai Road to the north of Cheung Tsing Bridge at the east coast of Tsing Yi. | <ul style="list-style-type: none">• N.A. |