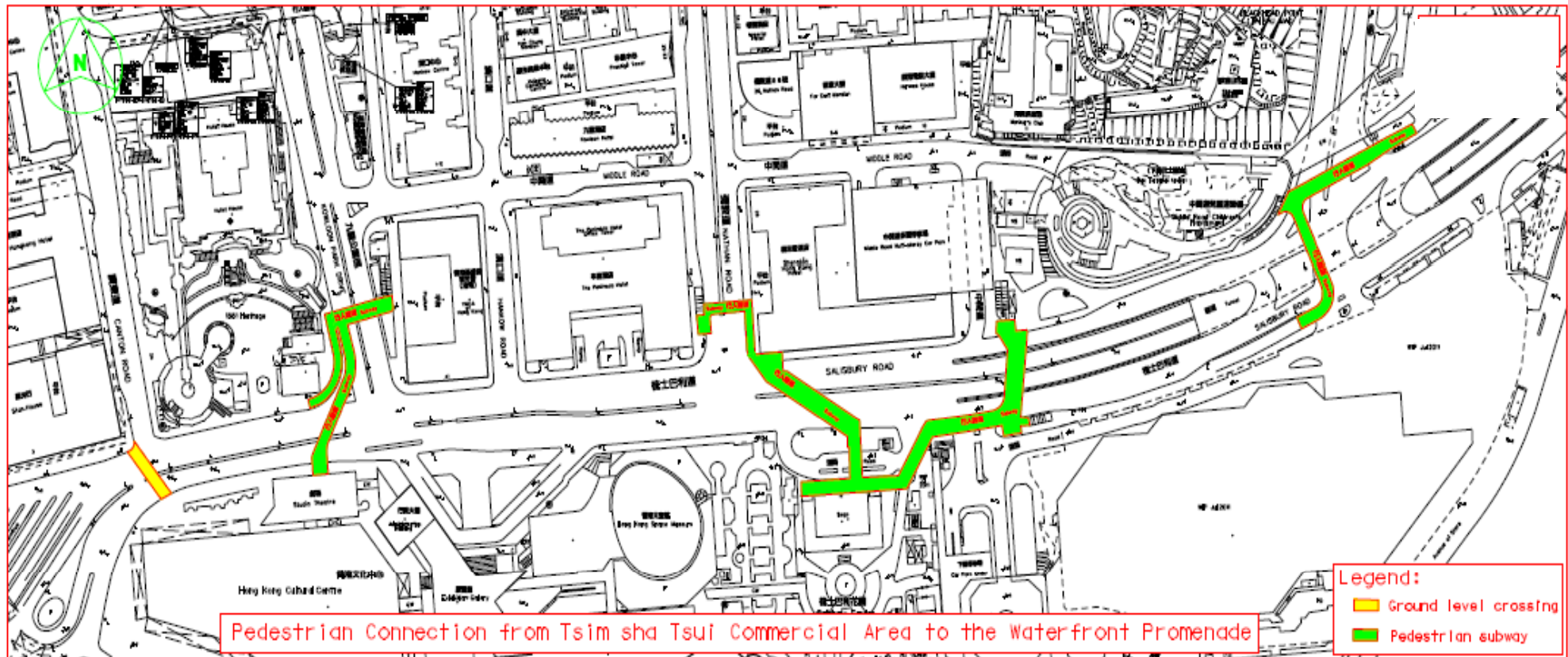


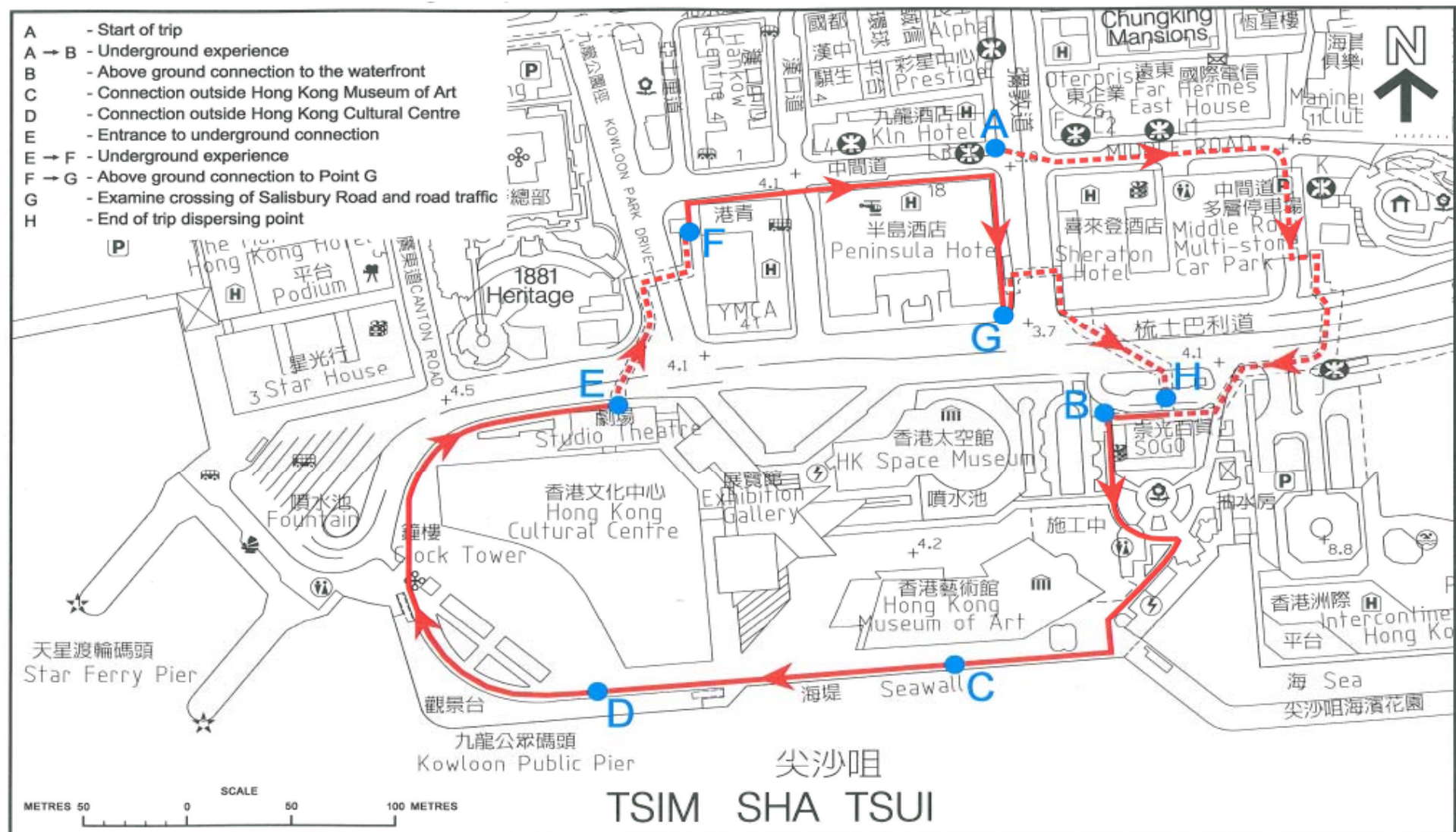
Pedestrian Connectivity in Tsim Sha Tsui Waterfront

Existing Pedestrian Facilities across Salisbury Road

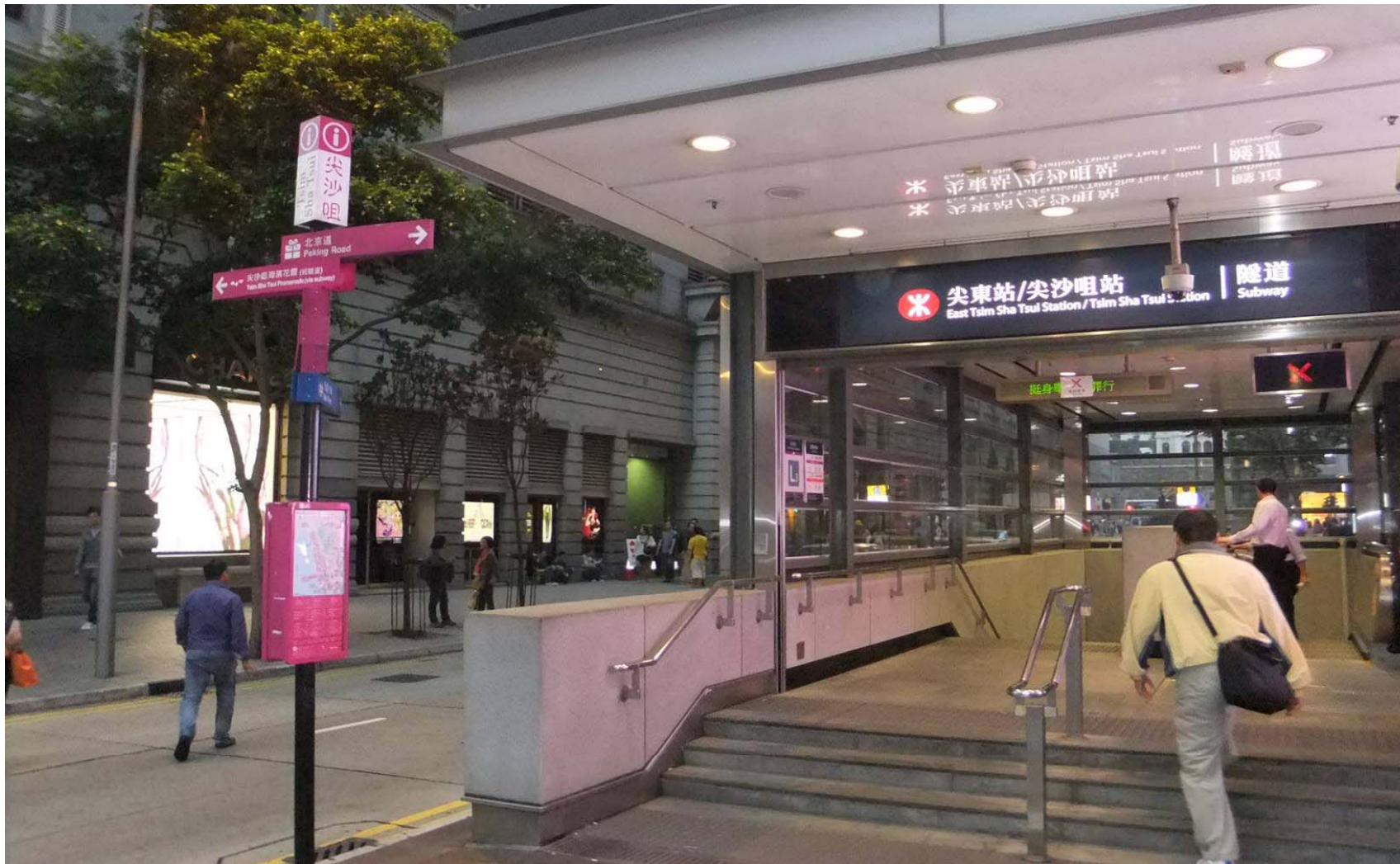


Pedestrian Connectivity in Tsim Sha Tsui Waterfront

2012.11.13 Walking Tour



Pedestrian Connectivity in Tsim Sha Tsui Waterfront



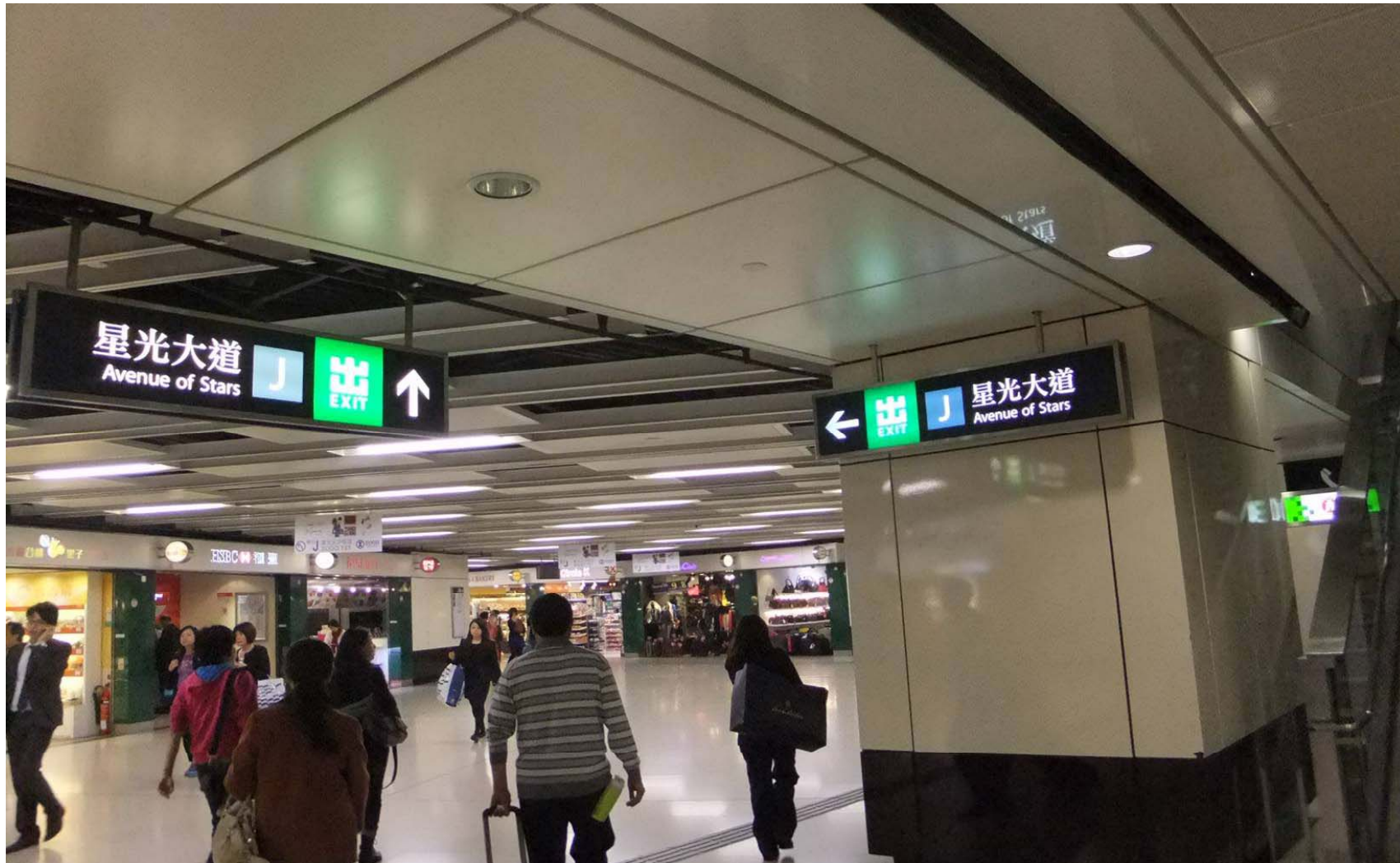
[1] Location: MTR Exit near Kowloon Hotel

Pedestrian Connectivity in Tsim Sha Tsui Waterfront



[2] Location: MTR Subway underneath Middle Road (1)

Pedestrian Connectivity in Tsim Sha Tsui Waterfront



[3] Location: MTR Subway underneath Middle Road (2)

Pedestrian Connectivity in Tsim Sha Tsui Waterfront



[4] Location: Subway underneath Salisbury Road (1)

Pedestrian Connectivity in Tsim Sha Tsui Waterfront



[5] Location: Subway underneath Salisbury Road (2)

Pedestrian Connectivity in Tsim Sha Tsui Waterfront



[6] Location: Subway underneath Salisbury Road (3)

Pedestrian Connectivity in Tsim Sha Tsui Waterfront



[7] Location: Subway Exit/Entrance at Sogo (1)

Pedestrian Connectivity in Tsim Sha Tsui Waterfront



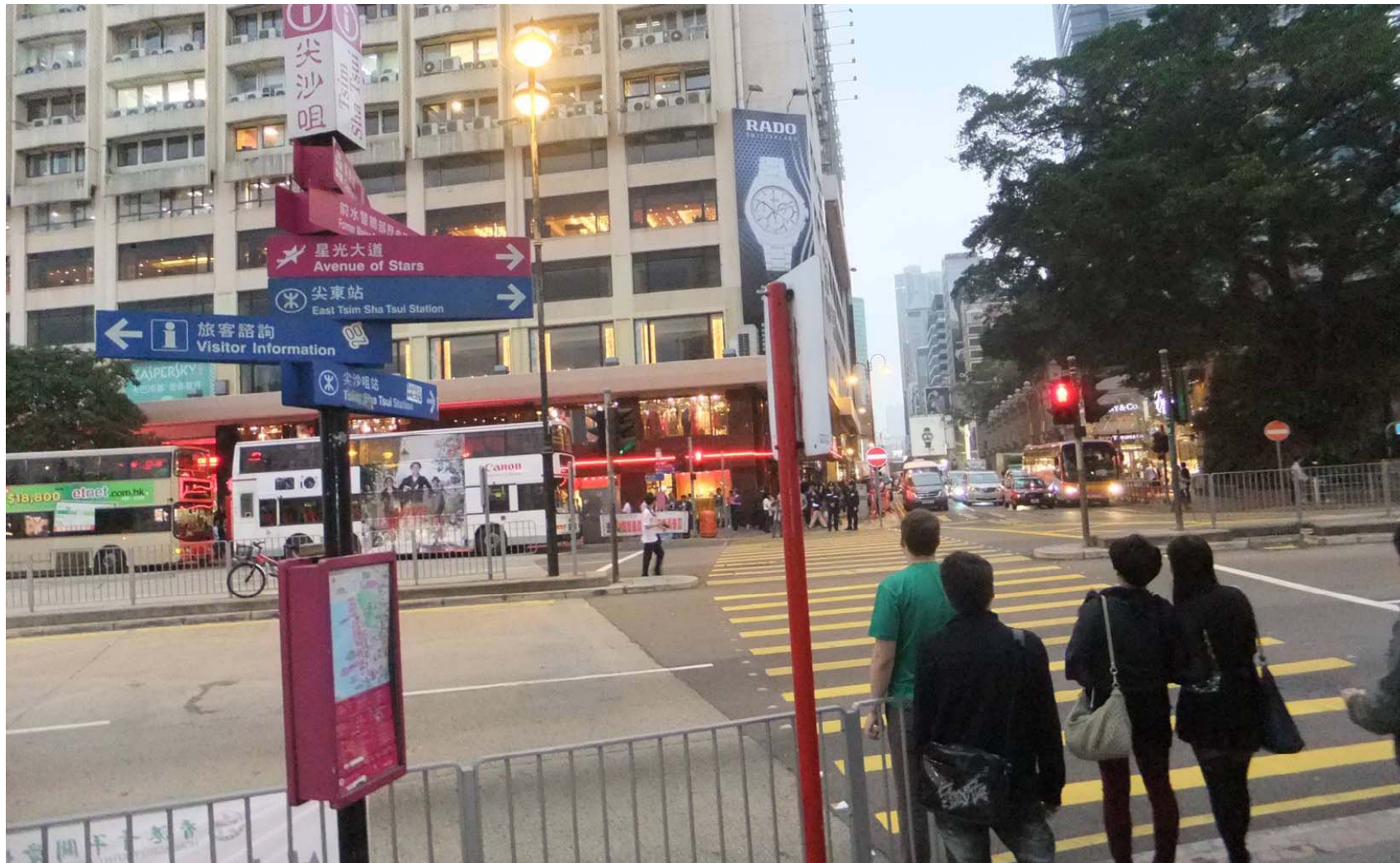
[8] Location: Subway Exit/Entrance at Sogo (2)

Pedestrian Connectivity in Tsim Sha Tsui Waterfront



[9] Location: Hong Kong Cultural Centre opposite Star House

Pedestrian Connectivity in Tsim Sha Tsui Waterfront



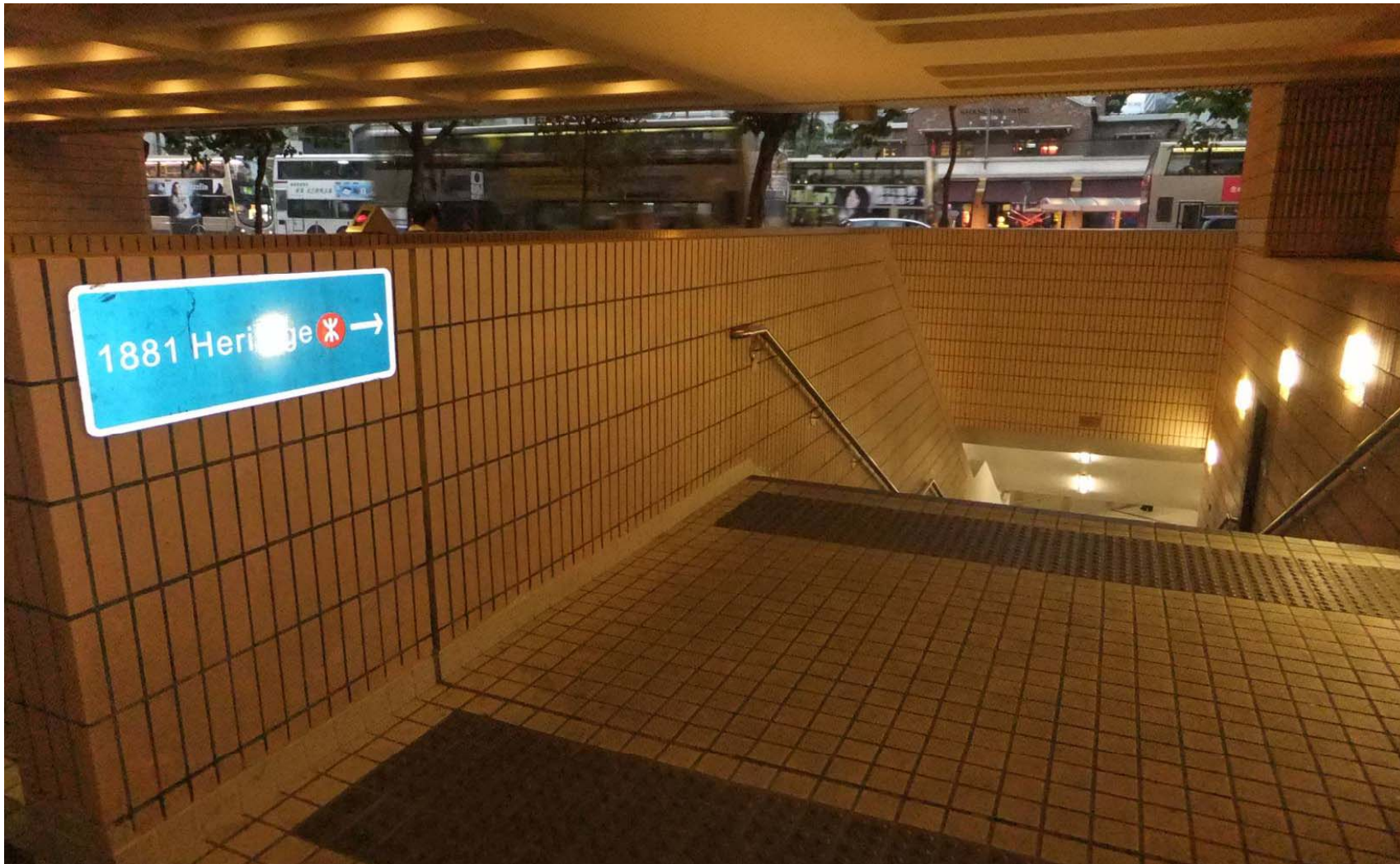
[10] Location: Ground Level Crossing to Canton Road

Pedestrian Connectivity in Tsim Sha Tsui Waterfront



[11] Location: Subway Entrance at Hong Kong Cultural Centre (1)

Pedestrian Connectivity in Tsim Sha Tsui Waterfront



[12] Location: Subway Entrance at Hong Kong Cultural Centre (2)

Pedestrian Connectivity in Tsim Sha Tsui Waterfront



[13] Location: Within Salisbury Subway connecting HKCC (1)

Pedestrian Connectivity in Tsim Sha Tsui Waterfront



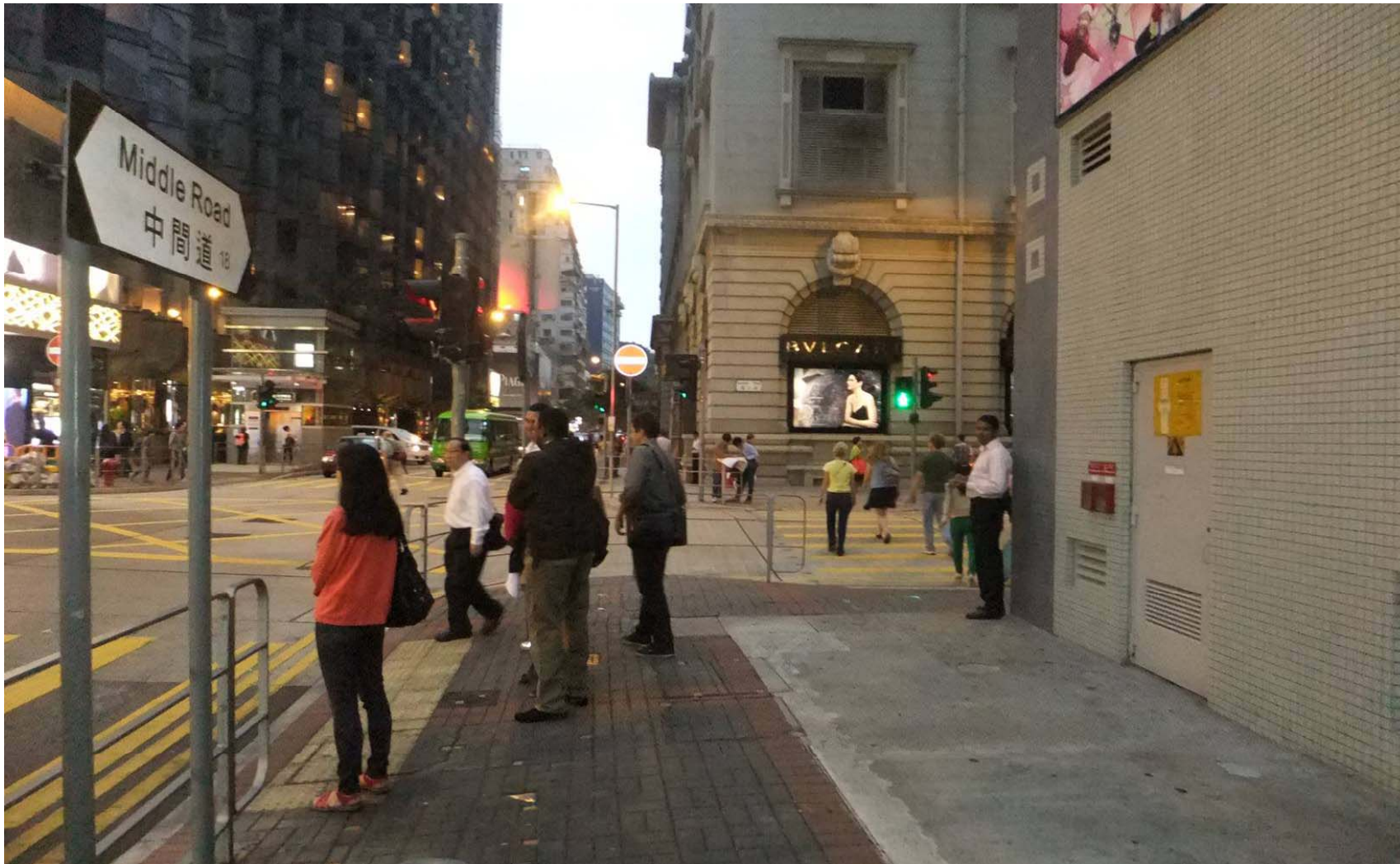
[14] Location: Within Salisbury Subway connecting HKCC (2)

Pedestrian Connectivity in Tsim Sha Tsui Waterfront



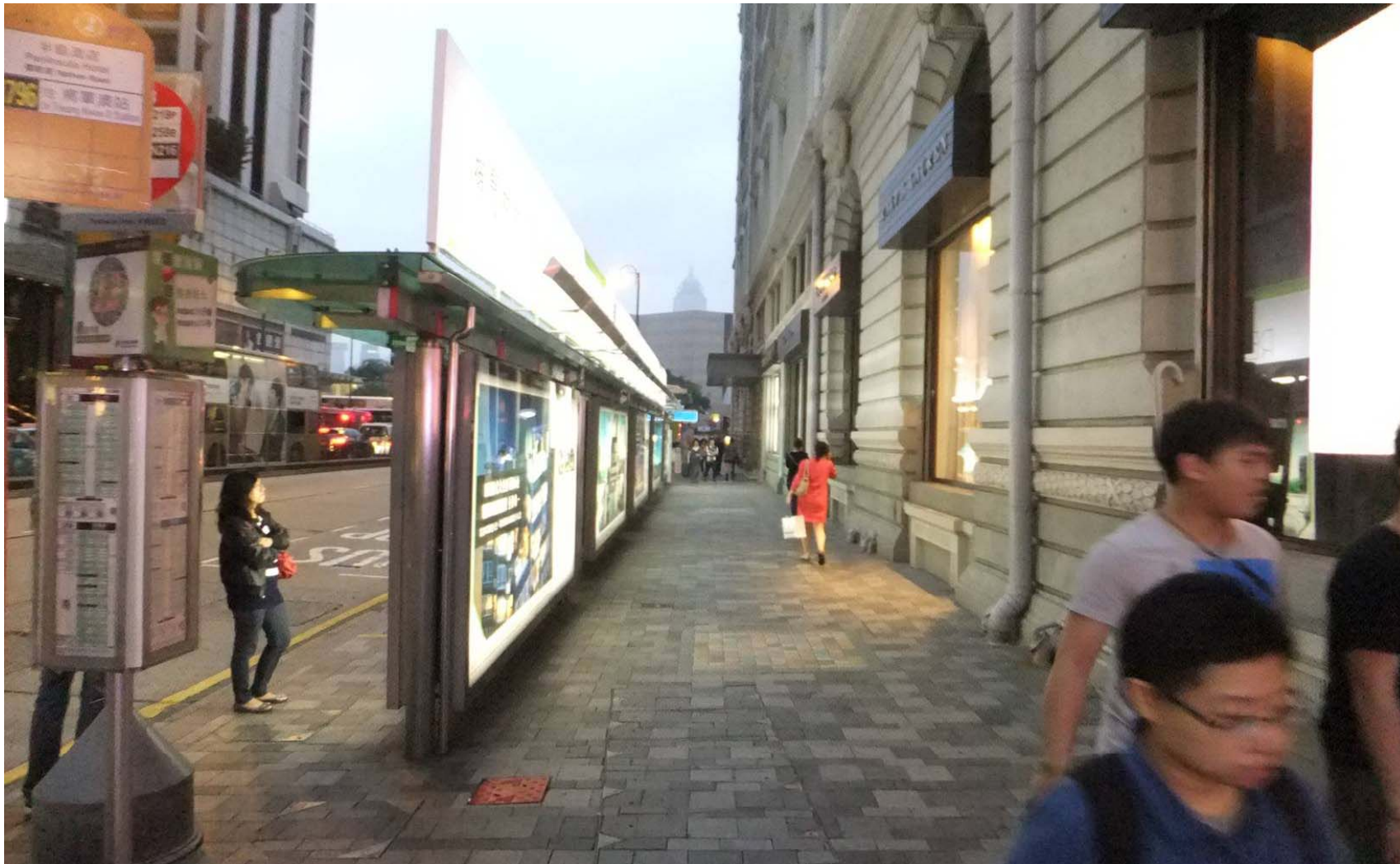
[15] Location: Subway Entrance/ Exit at YMCA

Pedestrian Connectivity in Tsim Sha Tsui Waterfront



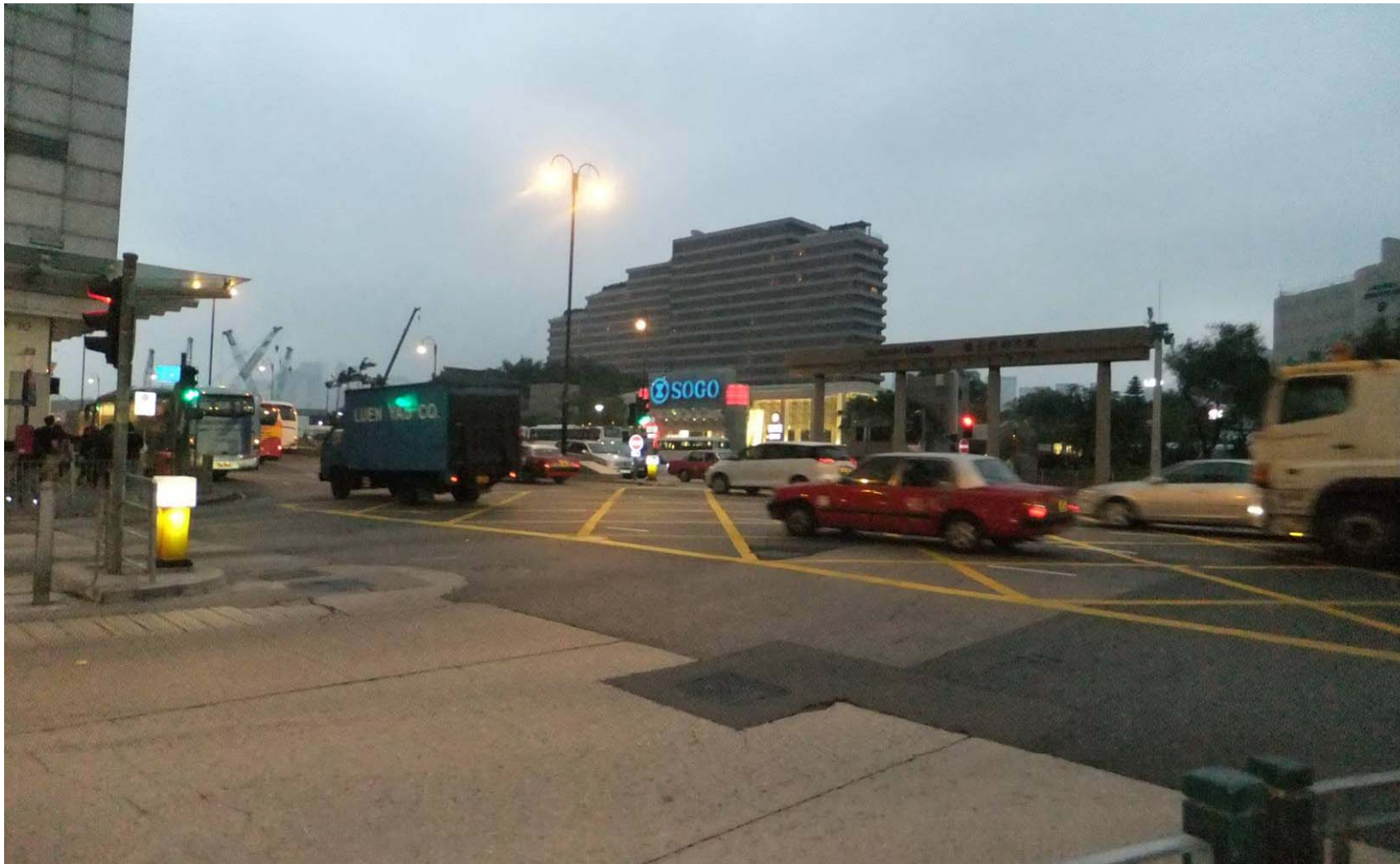
[16] Location: Middle Road near Kowloon Hotel

Pedestrian Connectivity in Tsim Sha Tsui Waterfront



[17]Location: Nathan Road near The Peninsula Hotel

Pedestrian Connectivity in Tsim Sha Tsui Waterfront



[18] Location: Junction of Salisbury Road and Nathan Road(1)

Pedestrian Connectivity in Tsim Sha Tsui Waterfront



[19] Location: Junction of Salisbury Road and Nathan Road(2)

Pedestrian Connectivity in Tsim Sha Tsui Waterfront



[20] Location: Subway underneath Sheraton Hotel (1)

Pedestrian Connectivity in Tsim Sha Tsui Waterfront



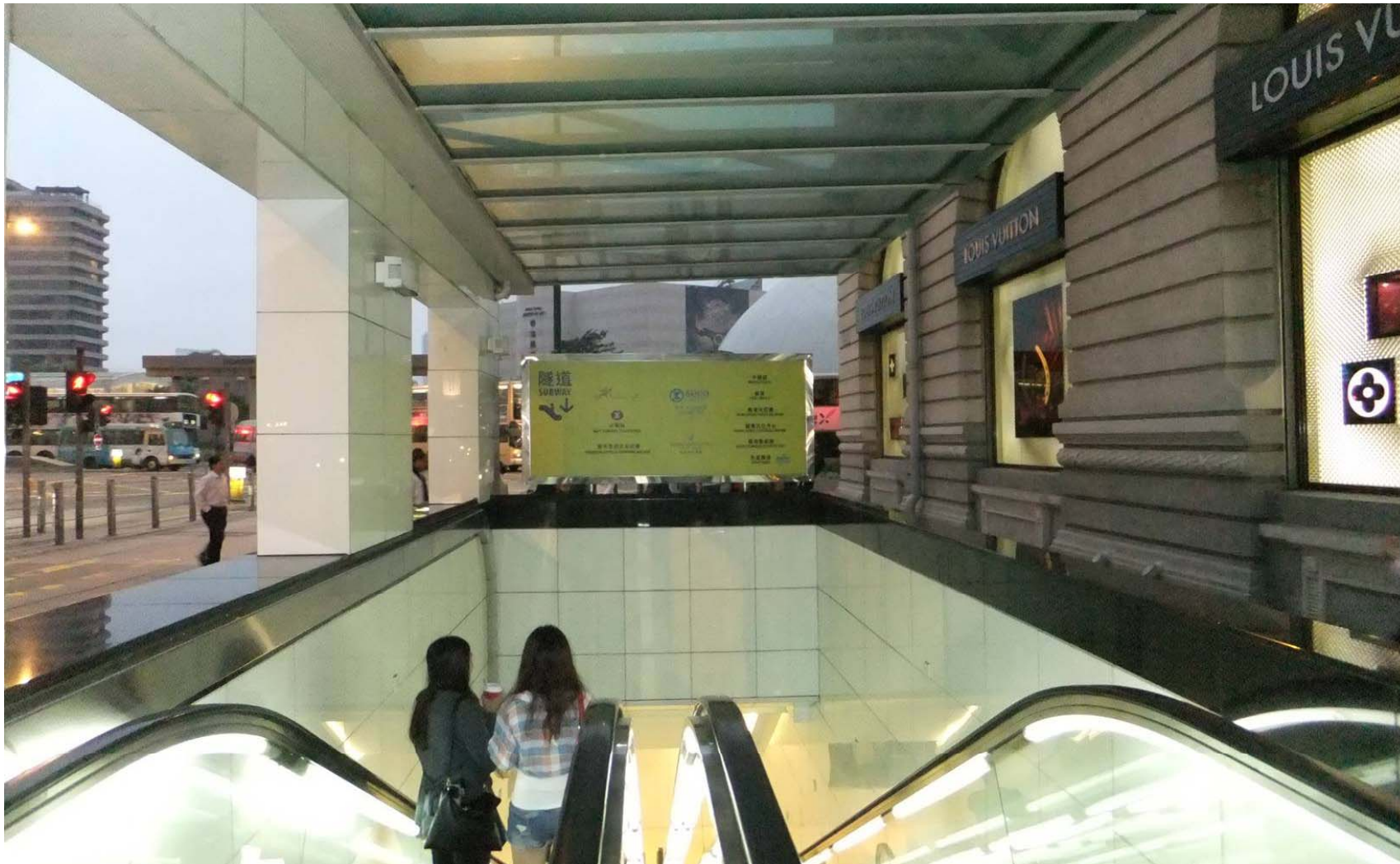
[21]Location: Subway underneath Sheraton Hotel (2)

Pedestrian Connectivity in Tsim Sha Tsui Waterfront



[22] Location: Subway underneath Sheraton Hotel (3)

Pedestrian Connectivity in Tsim Sha Tsui Waterfront



[23] Location: Subway Entrance/Exit at Peninsular Hotel

Pedestrian Connectivity in Tsim Sha Tsui Waterfront

Summary of Concerns from Members

- There is room for improving pedestrian signages at ground level footways and subways leading to the waterfront.
- The pedestrian signages and coding at the different subway sections (managed by different parties) should be more consistent and better coordinated.
- There is room for improving the annotation of information maps within the subways. Pictures of popular destinations may be used to replace unfamiliar names in the maps.

Pedestrian Connectivity in Tsim Sha Tsui Waterfront

Summary of Concerns from Members (Cont.)

- Present subway from Nathan Road to the waterfront is not a straight route. The option of resuming at-grade crossing across Salisbury Road should be explored.
- A more comprehensive walking map should be produced to cover at-grade footways and subways managed by both government and non-government bodies.

Pedestrian Connectivity in Tsim Sha Tsui Waterfront

Follow-Up

Government will continue to -

- review the pedestrian signages in phases – firstly for the ground level; and secondly for within the subways, with a view to providing clearer information to pedestrians to get to the waterfront.
- liaise among departments and different management agents for various sections of the subways such as MTRCL as well as private developers with a view to improving the pedestrian signage system holistically.

Thank You