

Proposed Residential Development at Nos. 1-5 Kai Hing Road, Kowloon

Application Site zoned as
“Commercial (2)” on Kai Tak
 Outline Zoning Plan

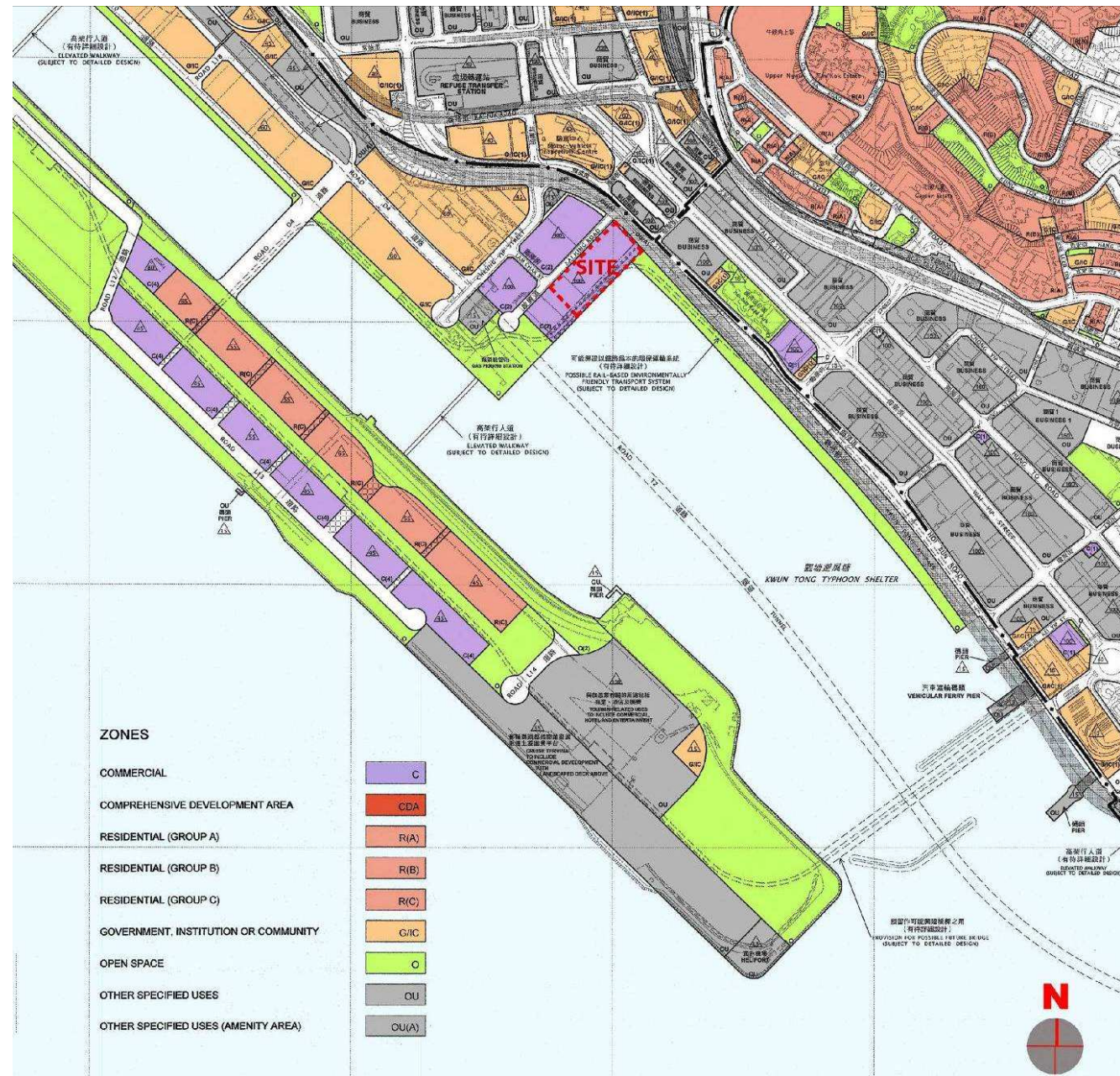
Max. Plot Ratio = 9.5
 for Non-domestic building

Max. Plot Ratio = 5
 for a domestic building or a
 building that is partly domestic
 and partly non-domestic on the
 site

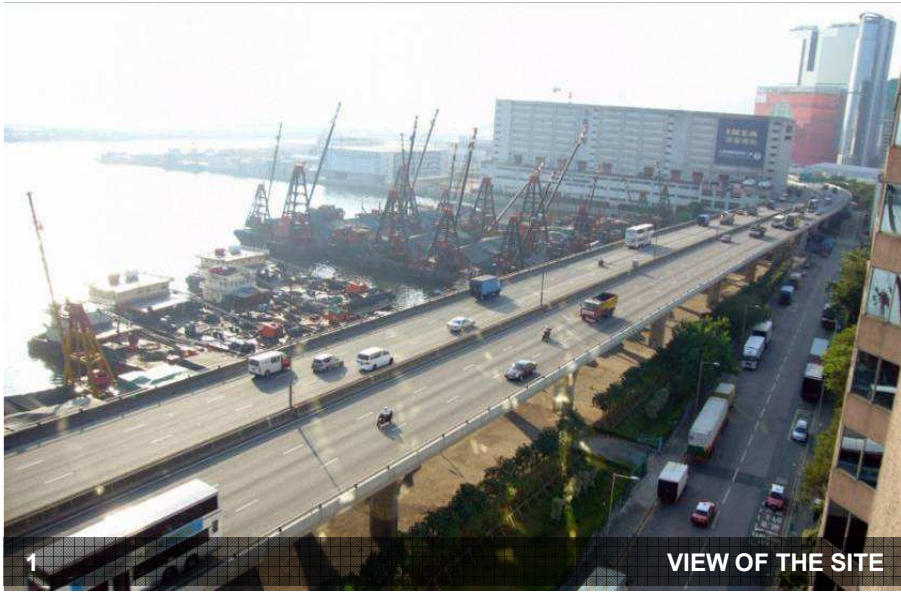
Max. Site Coverage
 (excluding basement): 65%

Max. Building Height
 100mPD

A 20m wide promenade
 for public enjoyment



Proposed Residential Development at Nos. 1-5 Kai Hing Road, Kowloon



1

VIEW OF THE SITE



3

KERRY D.G. GODOWN



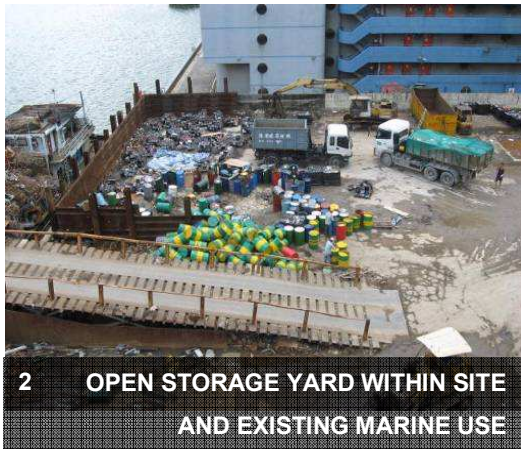
4

I/O BUILDING UNDER CONSTRUCTION (+136.45mPD)



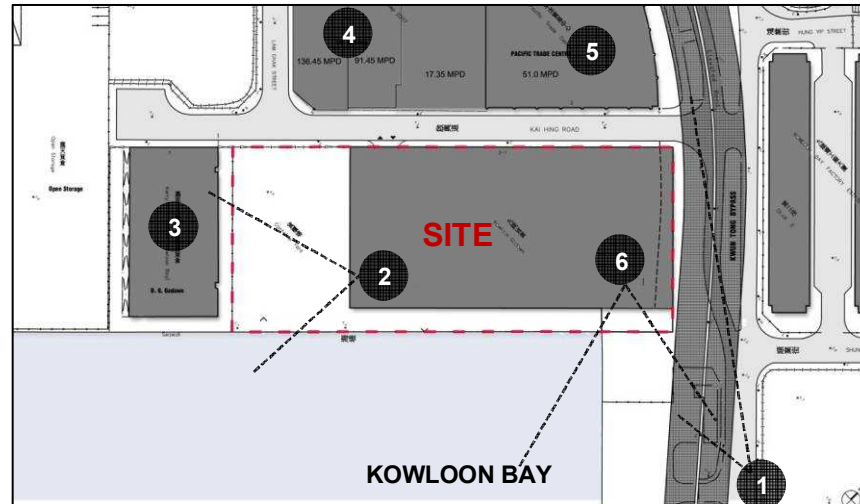
5

PACIFIC TRADE CENTRE



2

OPEN STORAGE YARD WITHIN SITE AND EXISTING MARINE USE



KOWLOON BAY

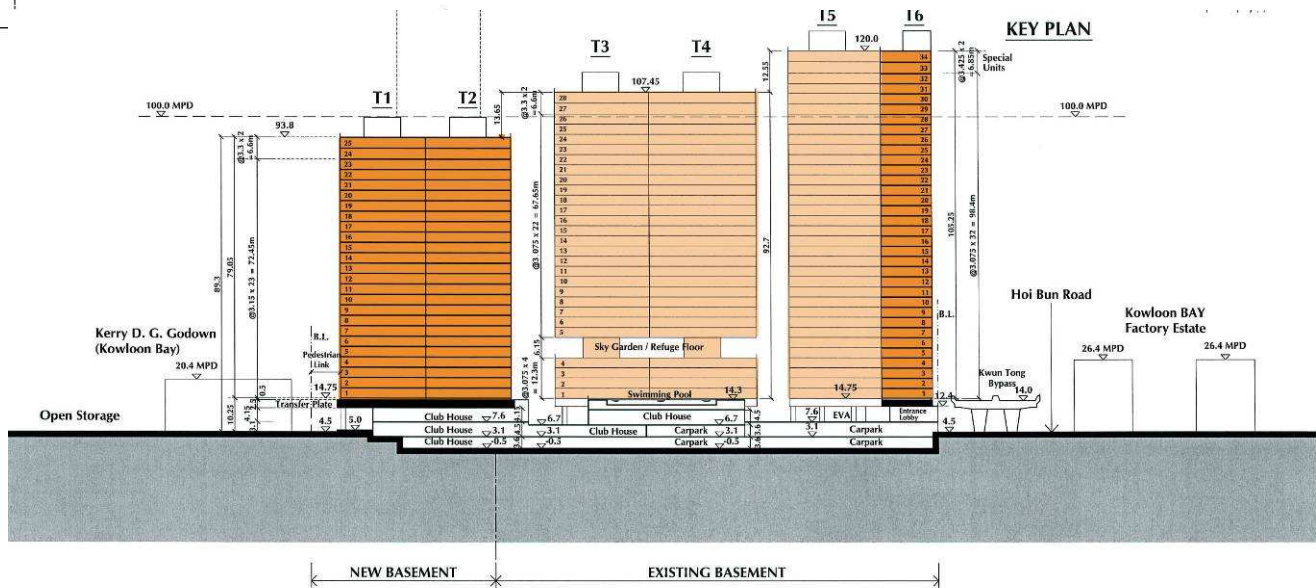
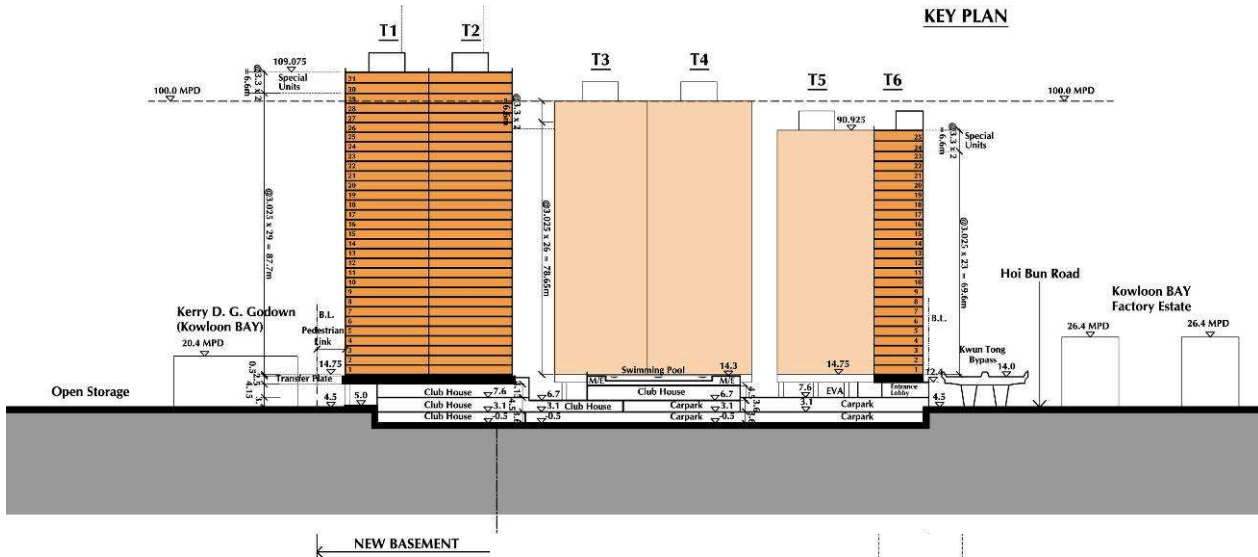


6

PCWA

Proposed Residential Development at Nos. 1-5 Kai Hing Road, Kowloon

Previous Attempts to Create Stepping Profile



**SECTION A-A
OPTION 5**

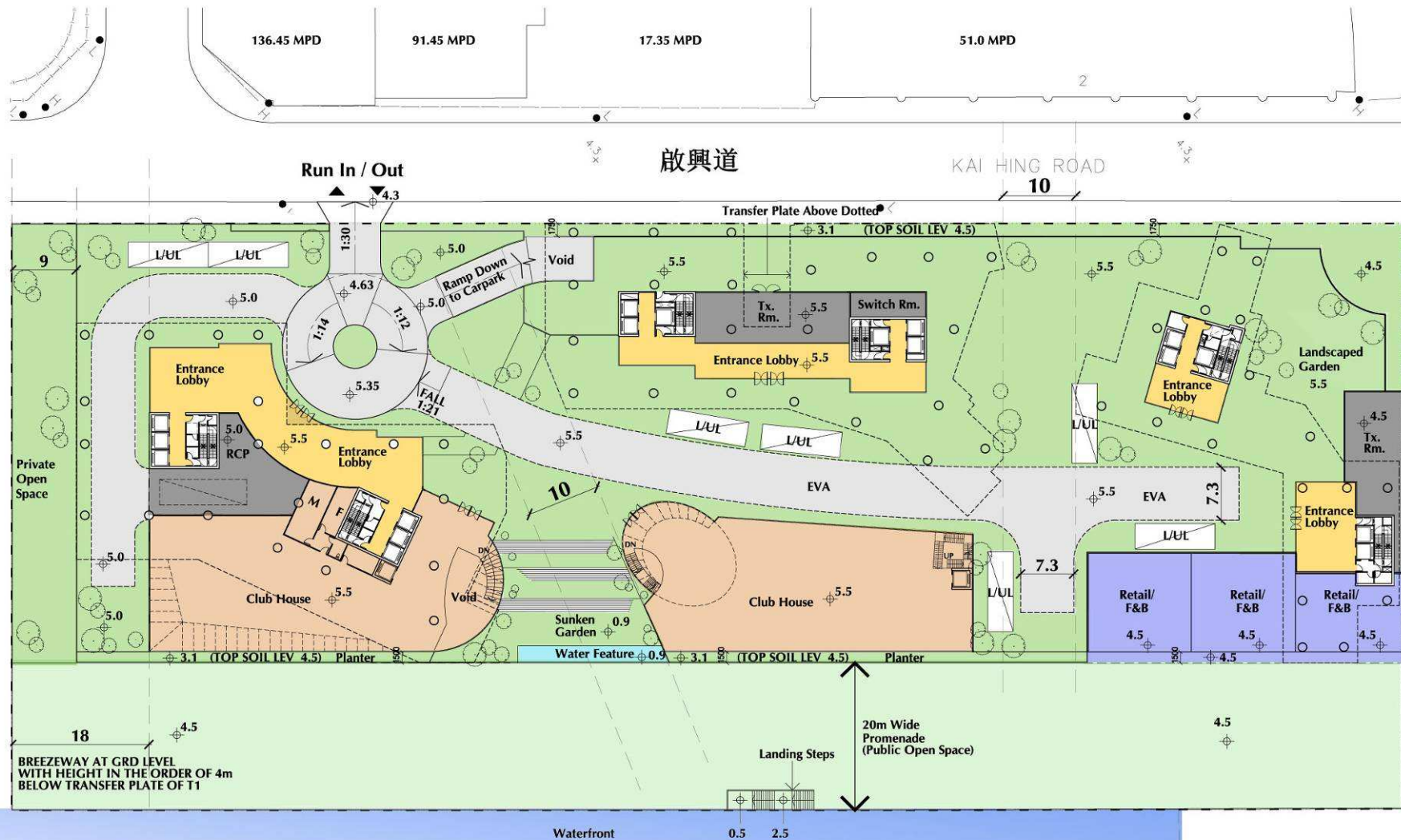
Proposed Residential Development at Nos. 1-5 Kai Hing Road, Kowloon

Approved Residential Development



Proposed Residential Development at Nos. 1-5 Kai Hing Road, Kowloon

Approved Residential Development



BREEZEWAY AT GRD LEVEL WITH HEIGHT IN THE ORDER OF 4m BELOW TRANSFER PLATE OF T1

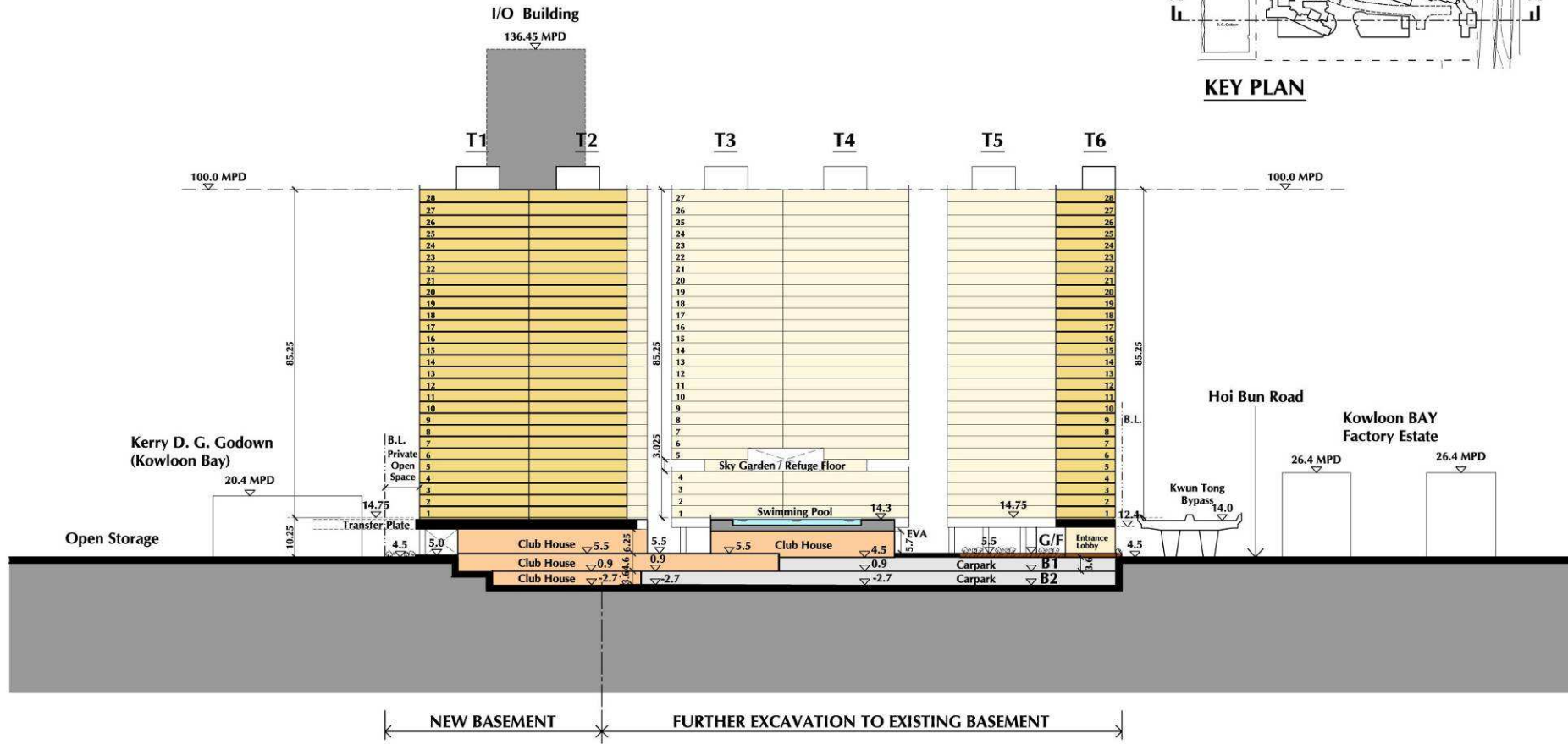
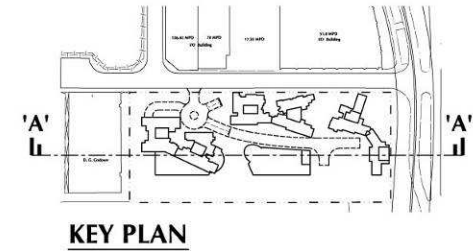
20m Wide Promenade (Public Open Space)



PLAN 4.4 **GROUND FLOOR PLAN**

Proposed Residential Development at Nos. 1-5 Kai Hing Road, Kowloon

Approved Residential Development



PLAN 4.6

Proposed Residential Development at Nos. 1-5 Kai Hing Road, Kowloon

View of Existing
Kowloon Godown



Approved Residential Development

View of the site
after redevelopment



Proposed Residential Development at Nos. 1-5 Kai Hing Road, Kowloon

Thank you