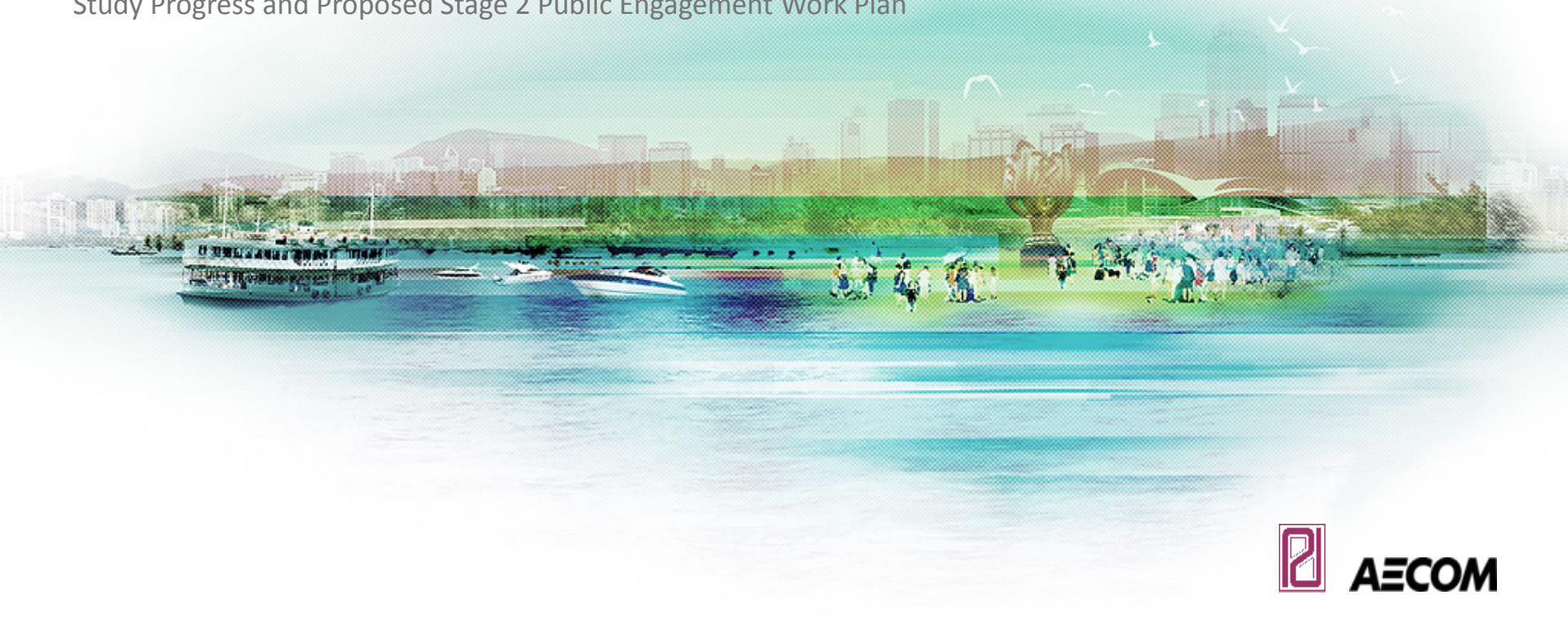


Urban Design Study for the Wan Chai North and North Point Harbourfront Areas

Harbourfront Commission - Task Force on Harbourfront Developments on Hong Kong Island
29 February 2016

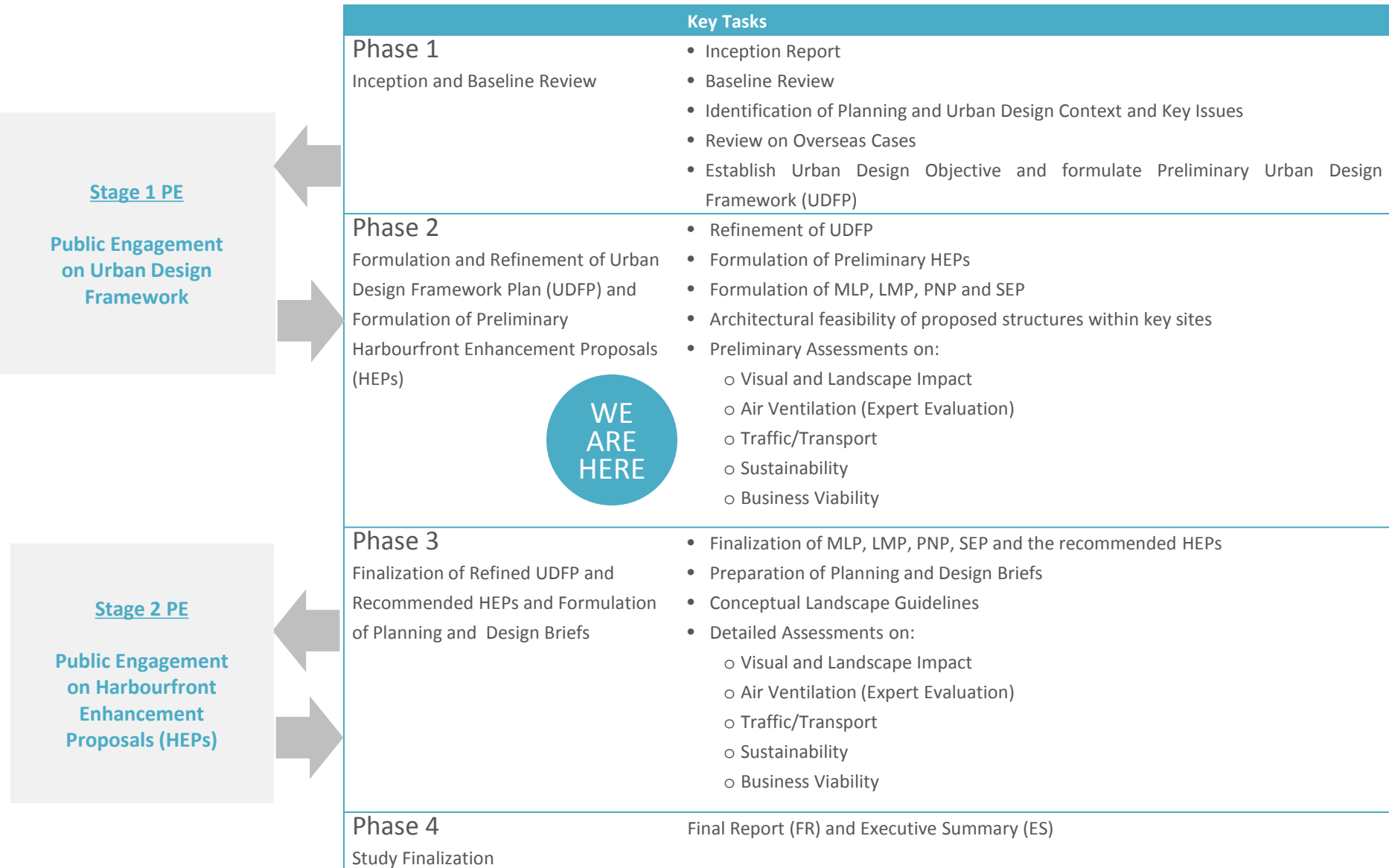
Study Progress and Proposed Stage 2 Public Engagement Work Plan



1. Study Progress

2. Design Ideas Competition
3. Stage Two Public Engagement Work Plan
4. Way Forward

Study Progress



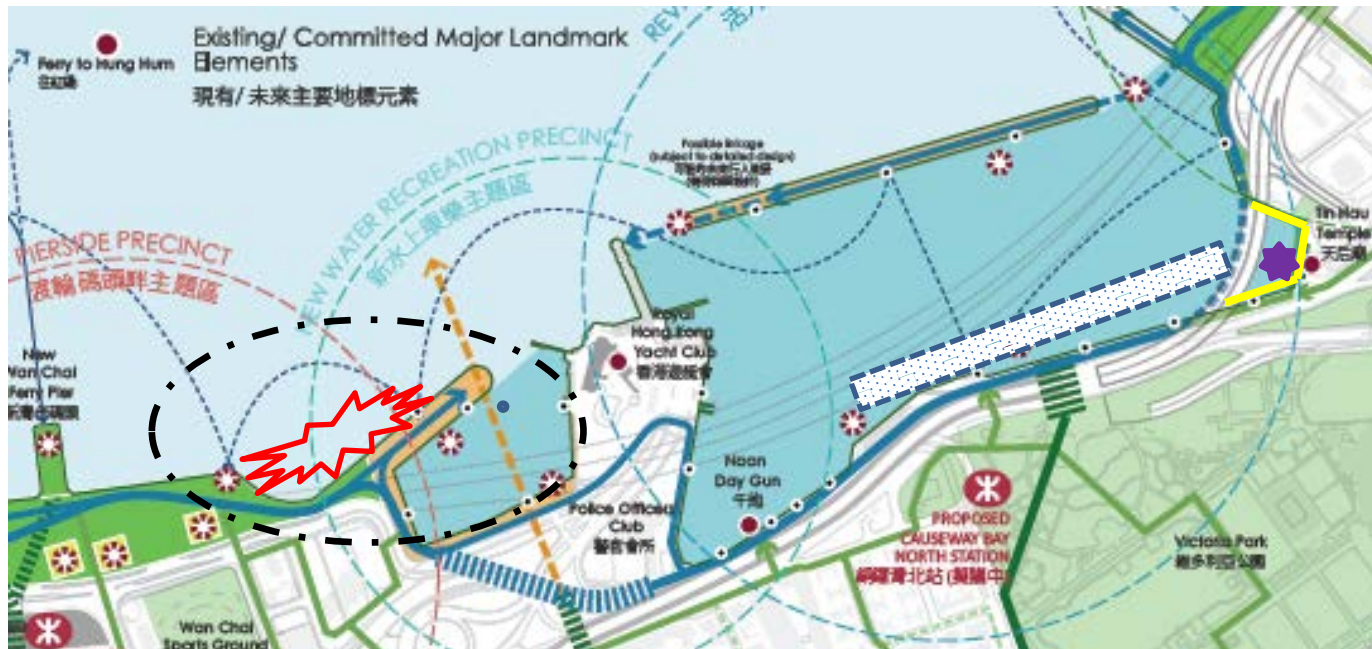
Study Progress



Date	Interviews/Meetings
24 November 2015	<ul style="list-style-type: none"> • Previous TFHK Meeting <ul style="list-style-type: none"> • Reported the progress: stage of formulation of HEPs • Members reminded the Study team to consult relevant water sports and recreation organization • Comments / suggestions include <ul style="list-style-type: none"> • design flexibility • shared use of the waterfront among different users without physically segregation • continuous cycle track, etc.
9 December 2016	<ul style="list-style-type: none"> • Meeting with Hong Kong Water Sports Council (HKWSC) <ul style="list-style-type: none"> • HKWSC shared concerns and difficulties in organizing sports events
Nov 2015 – Feb 2016	<ul style="list-style-type: none"> • Liaison with relevant Government departments, particularly on the implementation arrangements • Arrangement of interview/meetings with key stakeholders along the waterfront including HKCEC, RHKYC, Hong Kong Electric, etc. • On-going refinement of HEPs, taking into account members', Government departments' and key stakeholders' comments • Technical assessments including transport and traffic review, LVIA, AVA, BVS
To be arranged	<ul style="list-style-type: none"> • 4th Meeting with WGUDS to discuss further on the refined HEPs


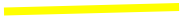

Meeting with Hong Kong Water Sports Council

On 9 December 2015, the Study Team met with the Hong Kong Water Sports Council (HKWSC) with presence of representatives from RHKYC, Hong Kong China Dragon Boat Association, Hong Kong Canoe Union, Hong Kong China Rowing Association and Hong Kong Sailing Federation.

- ❖ The representatives shared their main concerns and difficulties in organizing sports events, which included insufficient land area for public gathering/viewing, lack of landing steps, pontoons, changing facilities, etc.
- ❖ Their suggestion:



-  Site for rental to public of rowing boats and canoes
-  Area for mooring visiting super-yachts

-  Dragon Boat/Canoe/Rowing race course & other events area
-  Proposed sandy beach as extension of Victoria Park
-  Harbour related event centre

1. Study Progress
- 2. Design Ideas Competition**
3. Stage Two Public Engagement Work Plan
4. Way Forward

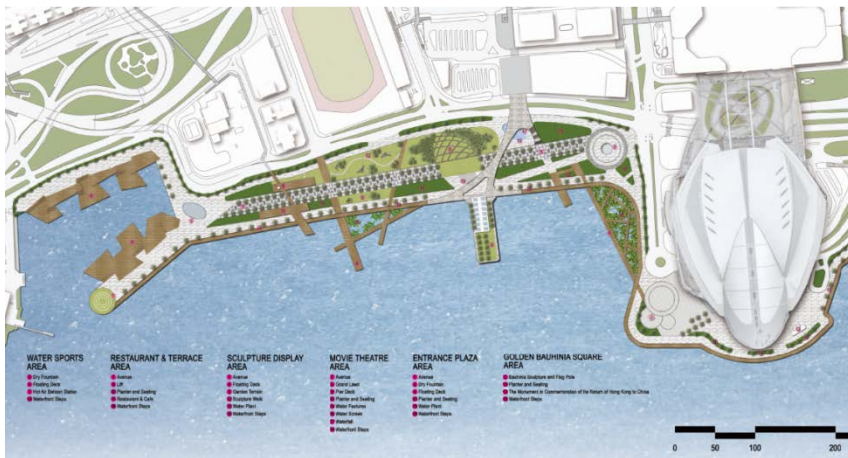
Design Ideas Competition

- ❖ Aim to encourage young professionals to participate in building a vibrant Wan Chai North and North Point Harbourfront.
- ❖ Design Objectives
 - ❖ Creating more attractions along the waterfront in order to foster a sense of place
 - ❖ Enhancing the connectivity and accessibility of the harbourfront
- ❖ A total of **35 Entries** have been received from different young professionals, including planners, designers, architects, engineers, etc.

29 October 2015	Launch of the Competition
23 December 2015	Commencement for submission of entries
11 January 2016	Deadline for submission of entries
19 February 2016	Adjudication Meeting
To be confirmed	Announcement of Winners
To be confirmed	Prize-giving Ceremony

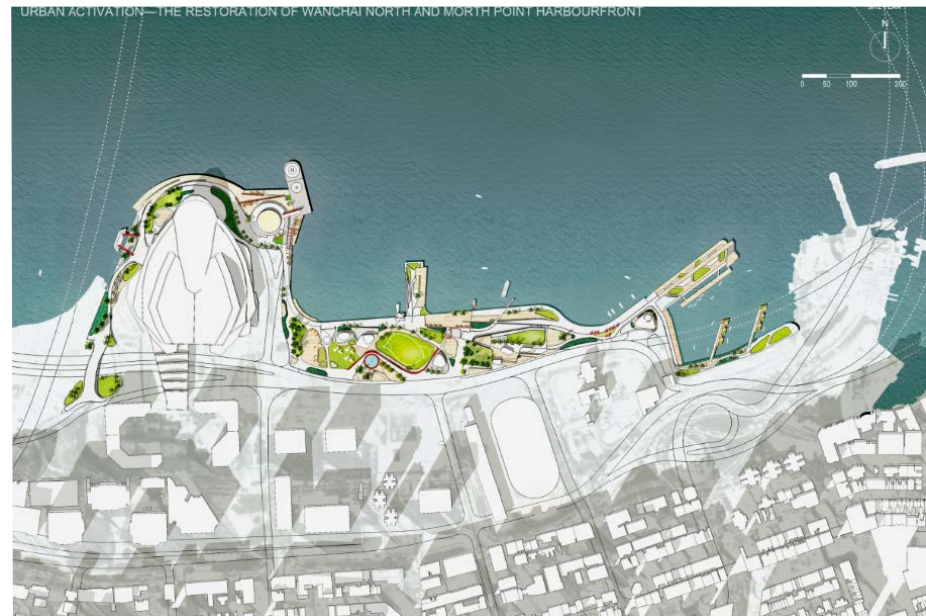
Design Ideas Competition

❖ Examples:



Design Ideas Competition

❖ Examples:



Common Design Ideas / Features

- ❖ Among the **35 Entries** received, some common design ideas and features are observed or identified:
 - ❖ Golden Bauhinia Square
 - ❖ Canal / River along the Waterfront
 - ❖ Art Corridor / Zone
 - ❖ Urban Beach
 - ❖ Reflection of Local Wan Chai History
 - ❖ Landing Steps / Step-down Water Edge
 - ❖ Cycle Track / Bicycle Rental System
 - ❖ Restaurant & Cafe
 - ❖ Floating Deck
 - ❖ Lookout / Observation Deck
 - ❖ Etc.

Common Design Ideas / Features

❖ Golden Bauhinia Square

2 GOLDEN BAUHINIA SQUARE



- An extensive copper mark of Bauhinia embedded into the ground in Celebration Precinct
- Silver tree ring pattern surrounding the Golden Bauhinia to indicate the milestones in the history of Hong Kong and its return to China
- Mixed use of gold, silver and copper materials to enrich the gradation as a main attraction during daytime
- Interactive flashes of laser lights at the pistils which changes colour when they sense motion above and lighting around the copper strip to make the 2-D Bauhinia mark more vibrant during nighttime
- Complement of both 2-D and 3-D Bauhinia-themed landmarks to further increase the attractiveness of the precinct



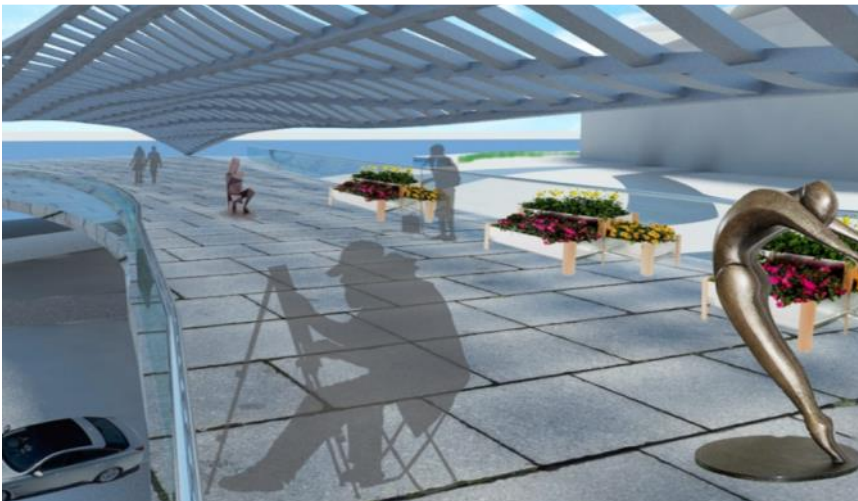
Common Design Ideas / Features

❖ Canal / River along the Waterfront



Common Design Ideas / Features

❖ Art Corridor / Zone



Common Design Ideas / Features

❖ Urban Beach



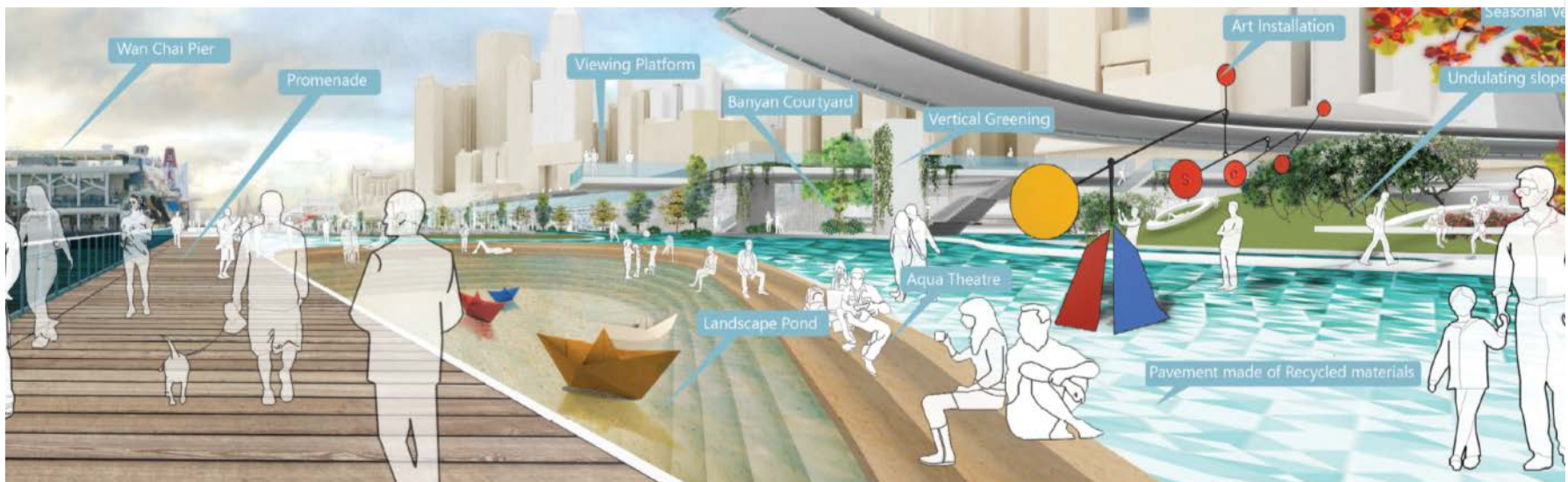
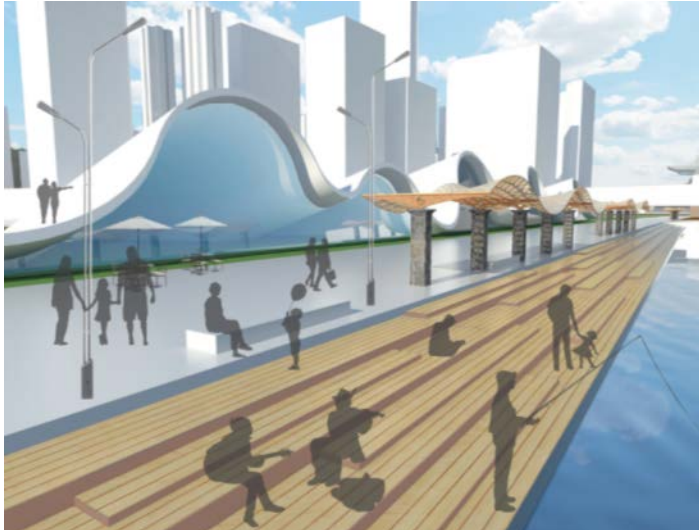
Common Design Ideas / Features

❖ Reflection on Local Wan Chai History



Common Design Ideas / Features

❖ Landing Step / Step-down Water Edge



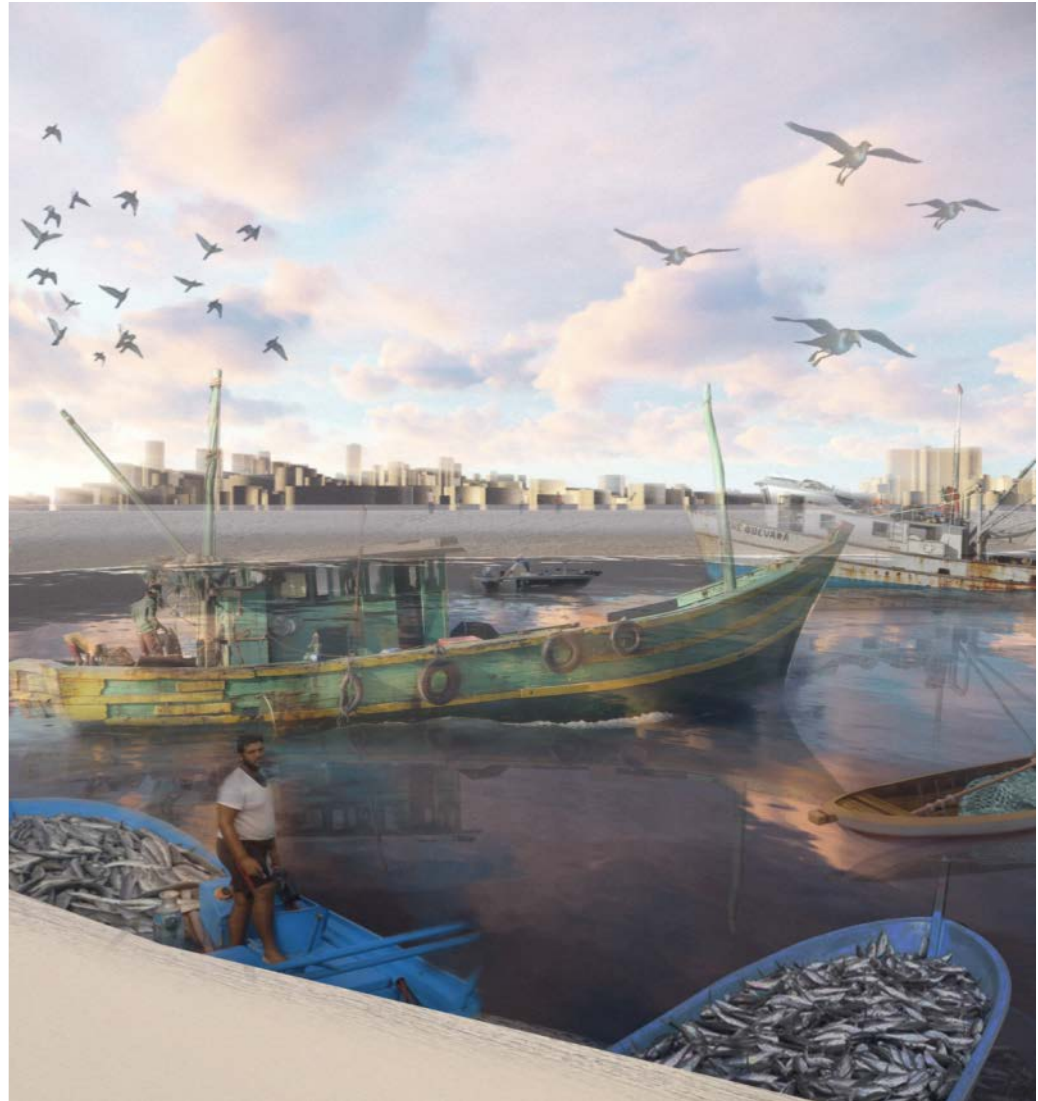
Common Design Ideas / Features

❖ Cycle Track / Bike Rental System



Common Design Ideas / Features

❖ Restaurant & Cafe



Common Design Ideas / Features

❖ Floating Deck



Common Design Ideas / Features

❖ Lookout / Observation Deck



1. Study Progress
2. Design Ideas Competition
- 3. Stage Two Public Engagement Work Plan**
4. Way Forward

Public Engagement Programme

COMPLETED!



Project Website with regular updates on all PE events and activities, engagement digests, publications, etc.

Focus Group Meetings

- ❖ To conduct in-depth and interactive discussions with relevant stakeholders and professionals with focused interests and concerns to further refine the urban design framework



Roving Exhibition

- ❖ Locations of the public venues for the exhibition are currently being determined



Consultation with Boards and Committees

- ❖ Formal consultation with the Wan Chai and Eastern District Councils



Resident Workshops

- ❖ Open to participation by general public
- ❖ To inform the participants of the PE findings
- ❖ provide a platform for public to express their specific opinions/aspirations on their desired future waterfront enhancement proposals
- ❖ To acknowledge the efforts of design competition participants and awardees



1. Study Progress
2. Design Ideas Competition
3. Stage Two Public Engagement Work Plan
- 4. Way Forward**

Way Forward

- ❖ On-going tasks to prepare for Stage 2 Public Engagement
 - ❖ Setting up Meetings/Interviews with Key Stakeholders
 - ❖ Preparation of Stage 2 Public Engagement Digest
 - ❖ Carry Out Preliminary Technical Assessments (incl. Visual and Landscape Impact, Air Ventilation (Expert Evaluation), Traffic & Transport, Sustainability, Business Viability etc.)
- ❖ Members' view on refined HEPs and Stage 2 PE Digest will be sought via 4th WGUDS meeting to be arranged separately