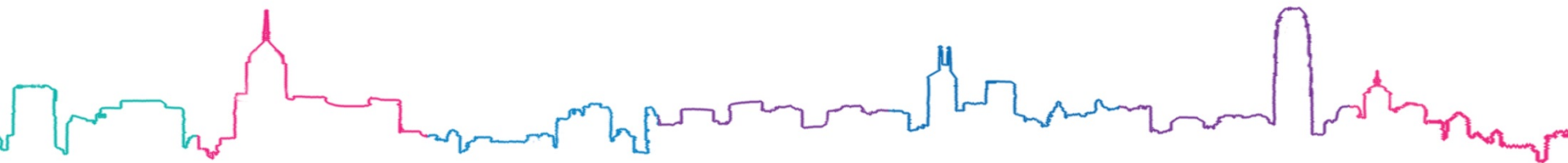


Proposed New Piazza Fronting City Gallery and City Hall

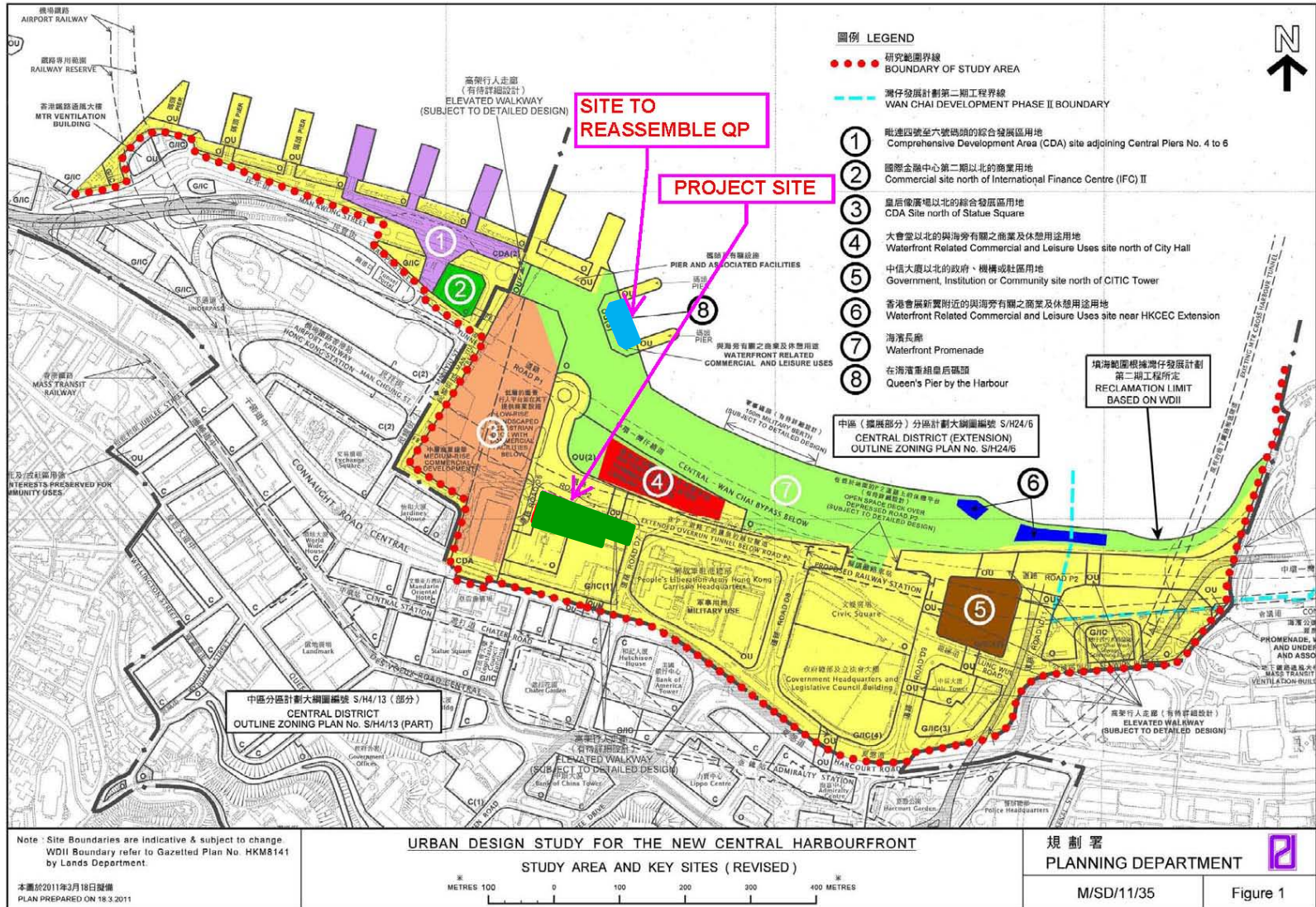
Task Force on Harbourfront Developments
on Hong Kong Island
19 May 2014



Urban Design Study for the New Central Harbourfront (UDS)

- Commenced in late March 2007
- 2 stages of extensive public engagement (PE) exercises
- Recommendations:
 - (i) Re-assemble QP between Pier No. 9 and Pier No. 10 to revive its pier function for public use
 - (ii) include memorial elements at the original site of QP

Location Plan



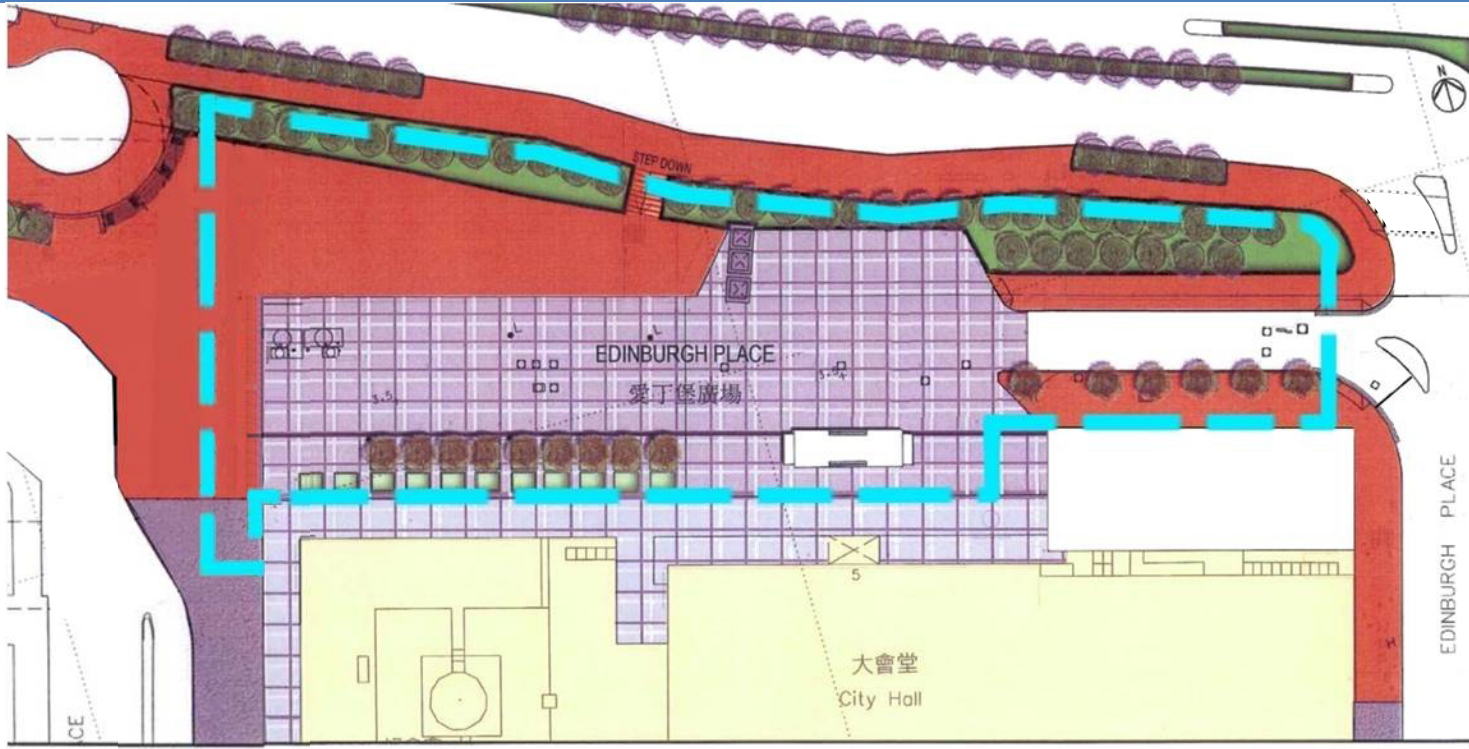
Purposes

- Implement UDS recommendations
- Create a piazza with holistic and thematic design
- Revitalize the Edinburgh Place and make it more vibrant and accessible for public enjoyment

- 1.0 Existing Site Condition**
- 2.0 Historical Reference**
- 3.0 Architectural Design Proposal**

1.0 Existing Site Condition

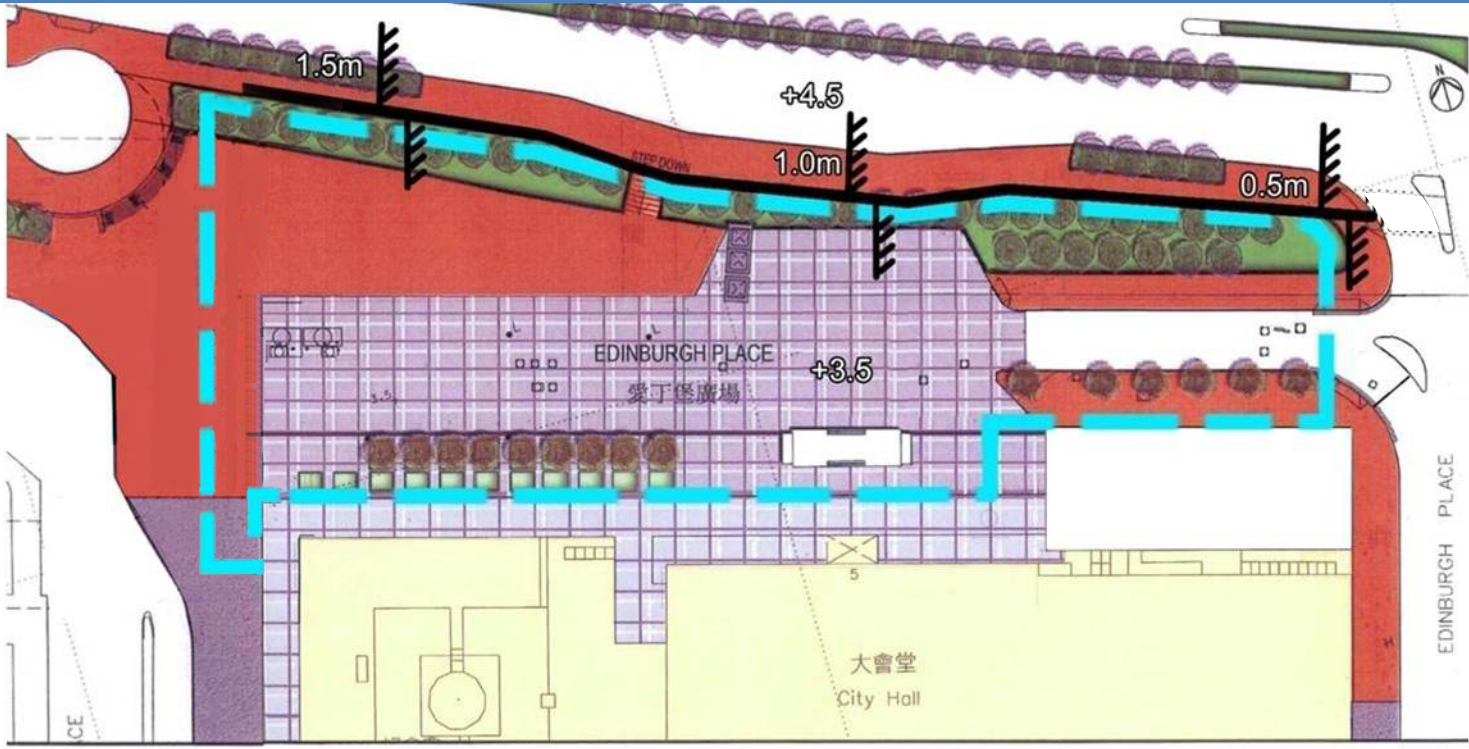
Existing Site Condition



LEGEND:

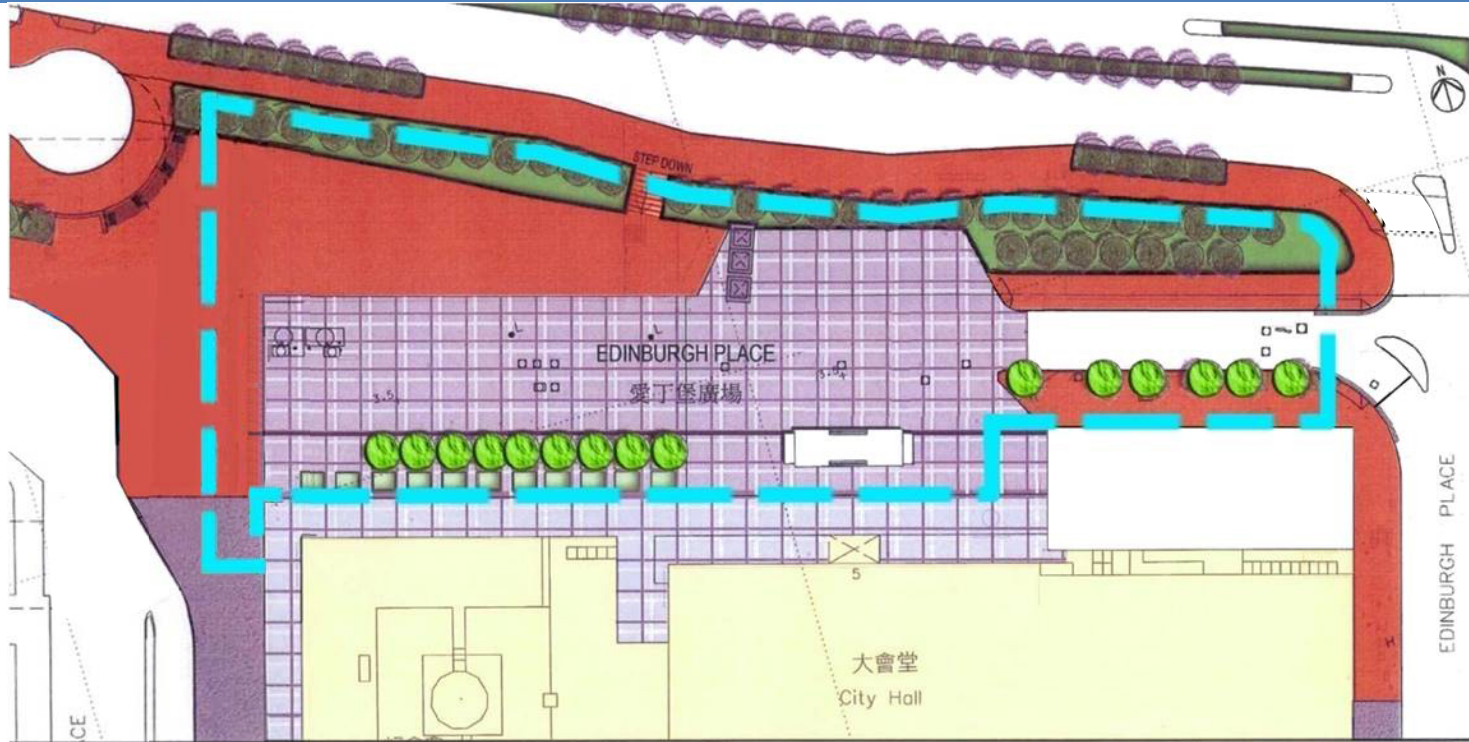
-  EXISTING TREES TO BE RETAINED
-  EXISTING PLANTER TO BE RETAINED
-  EXISTING WASH GRANO PAVING
-  EXISTING MANHOLE COVERS
-  EXISTING U-CHANNEL
-  FOOTPATH TO BE PAVED WITH CLAY PAVERS, LIGHT BROWN IN COLOR
-  EXISTING AREA FRONTING CITY HALL WITH ARTIFICIAL GRANITE TILE
-  DROP KERB
-  MULTI-PART COVER FOR CULVERT F

Existing Site Condition



*Level difference varies along Lung Wo Road

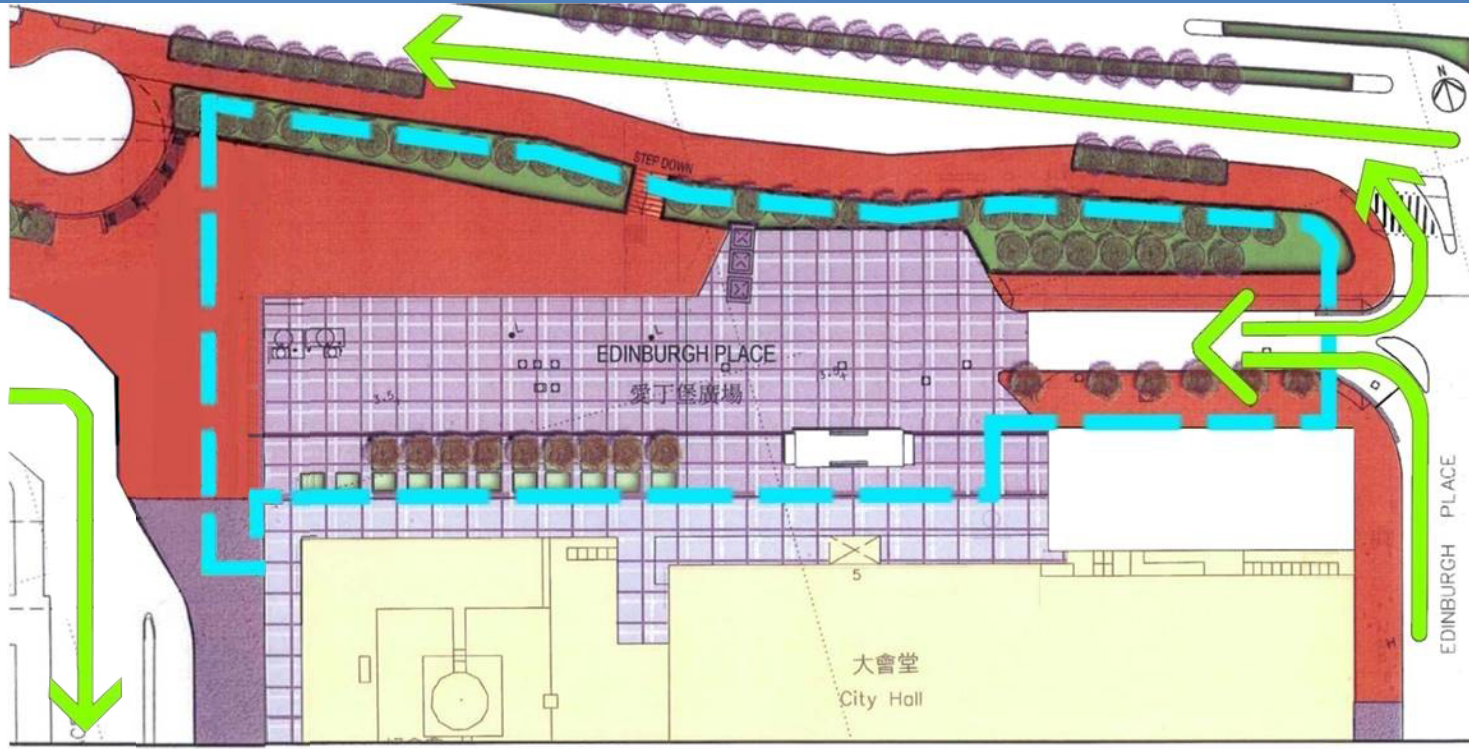
Existing Site Condition



LEGEND:

 EXISTING TREE

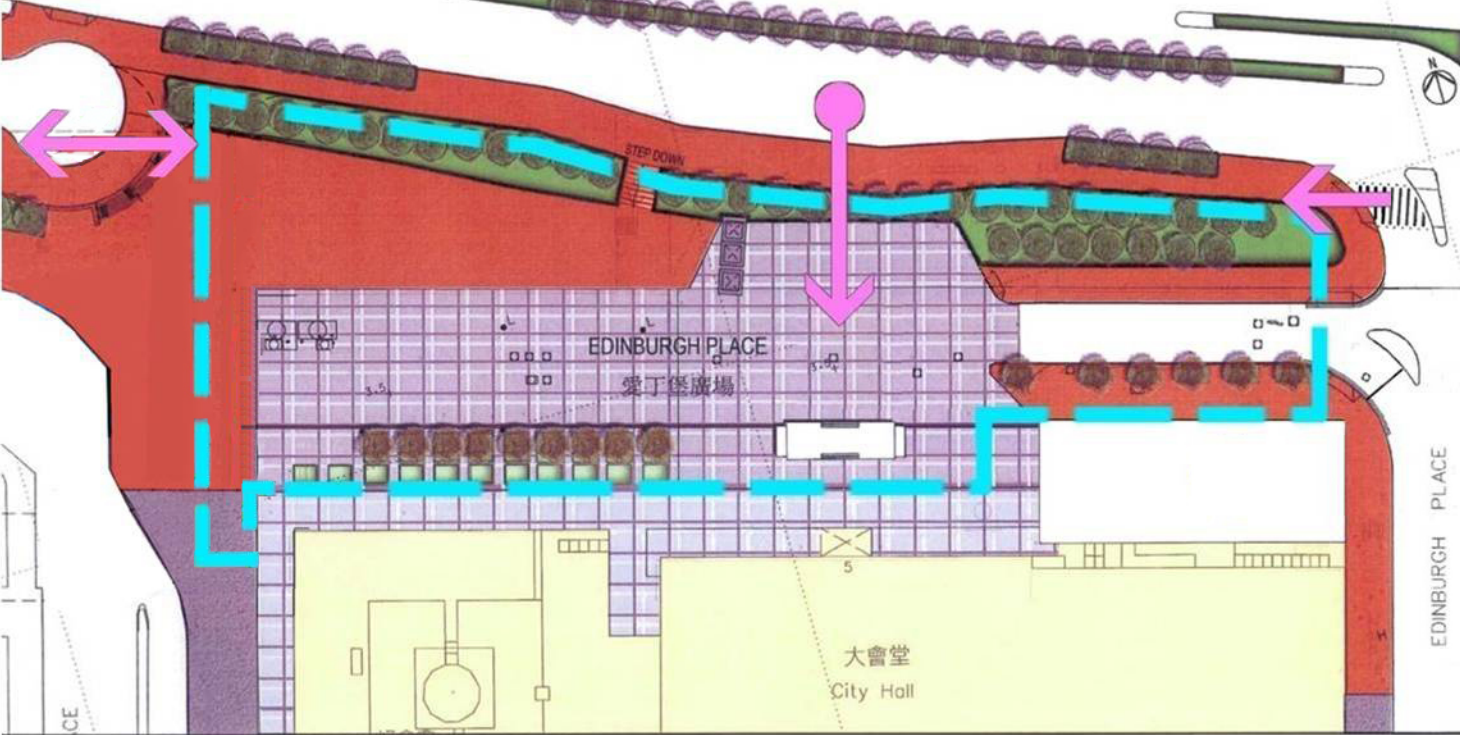
Existing Site Condition



LEGEND:

← VEHICULAR ACCESS

Existing Site Condition



LEGEND:

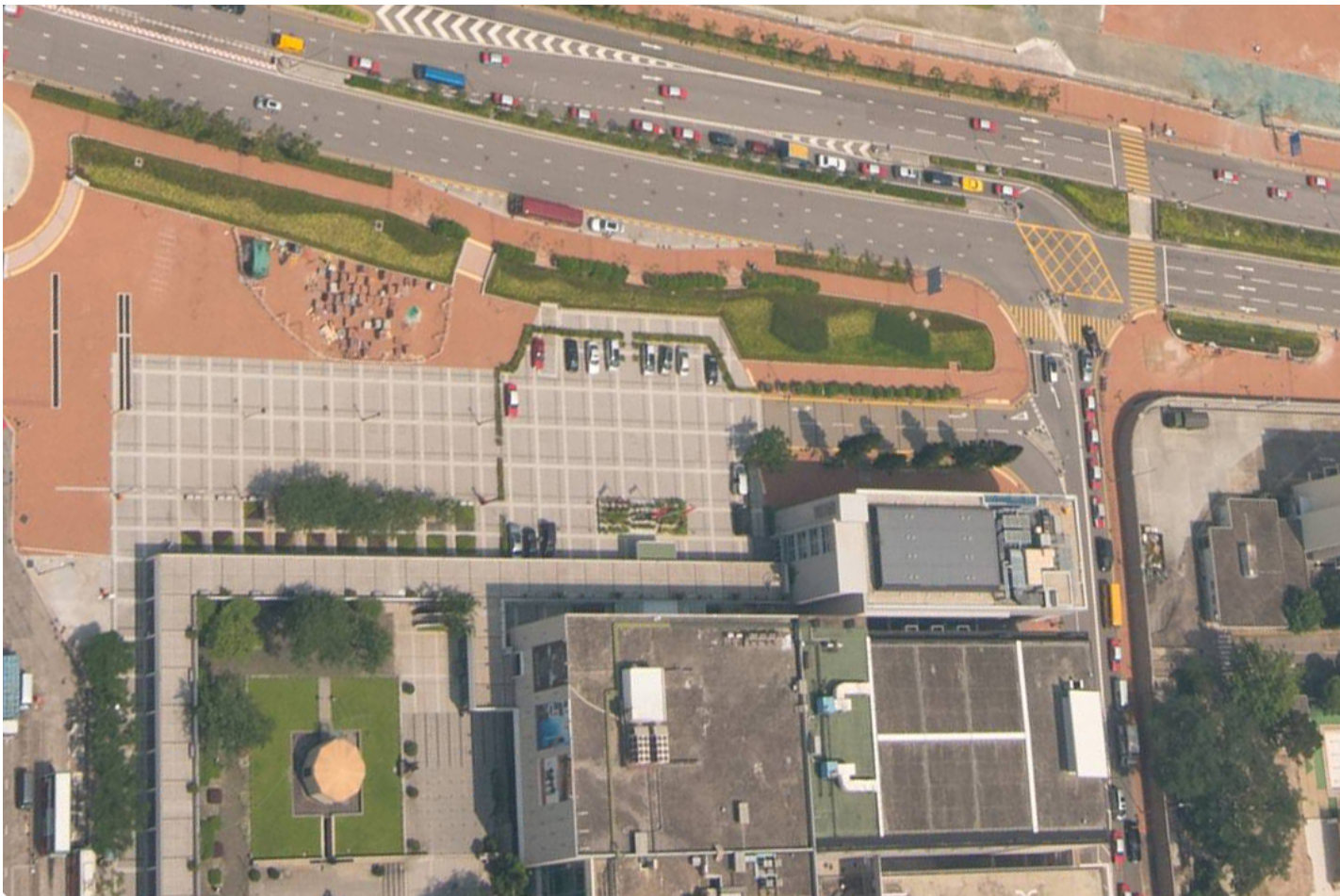
← GROUND LEVEL PEDESTRIAN ACCESS

Existing Site Condition

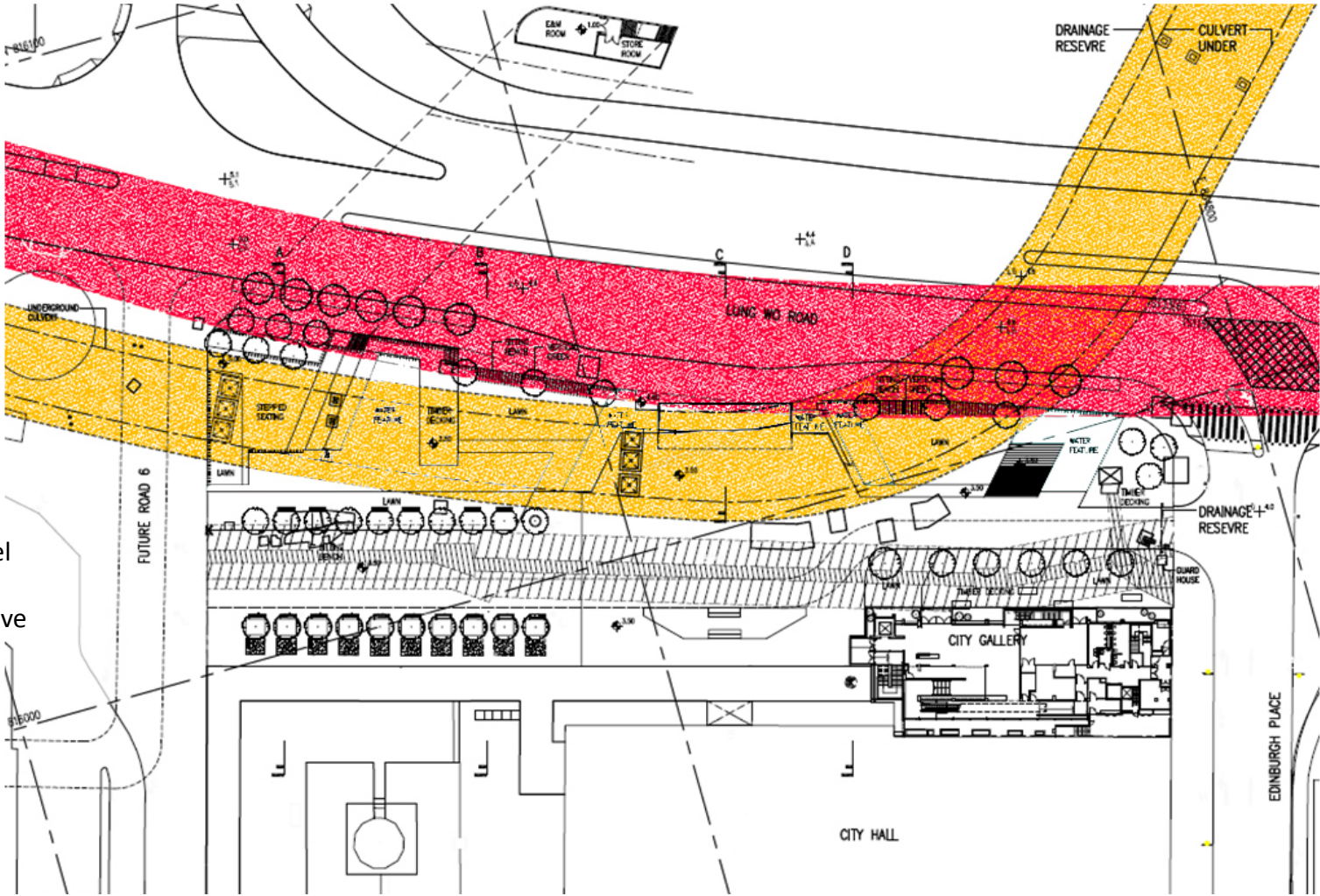


EVA and PPE Thoroughfare

Existing Site Condition



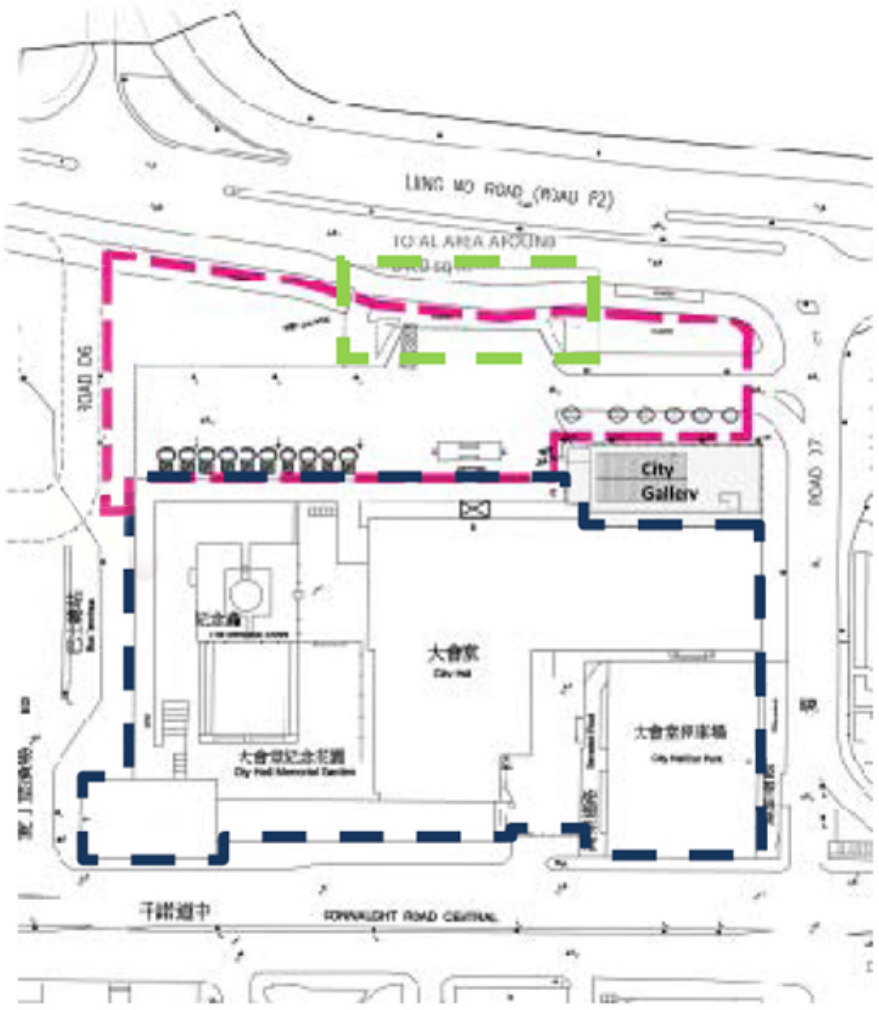
Site Constraint



- Legend:
- Overrun Tunnel
 - Drainage reserve

2.0 Historical Reference

Historical Reference

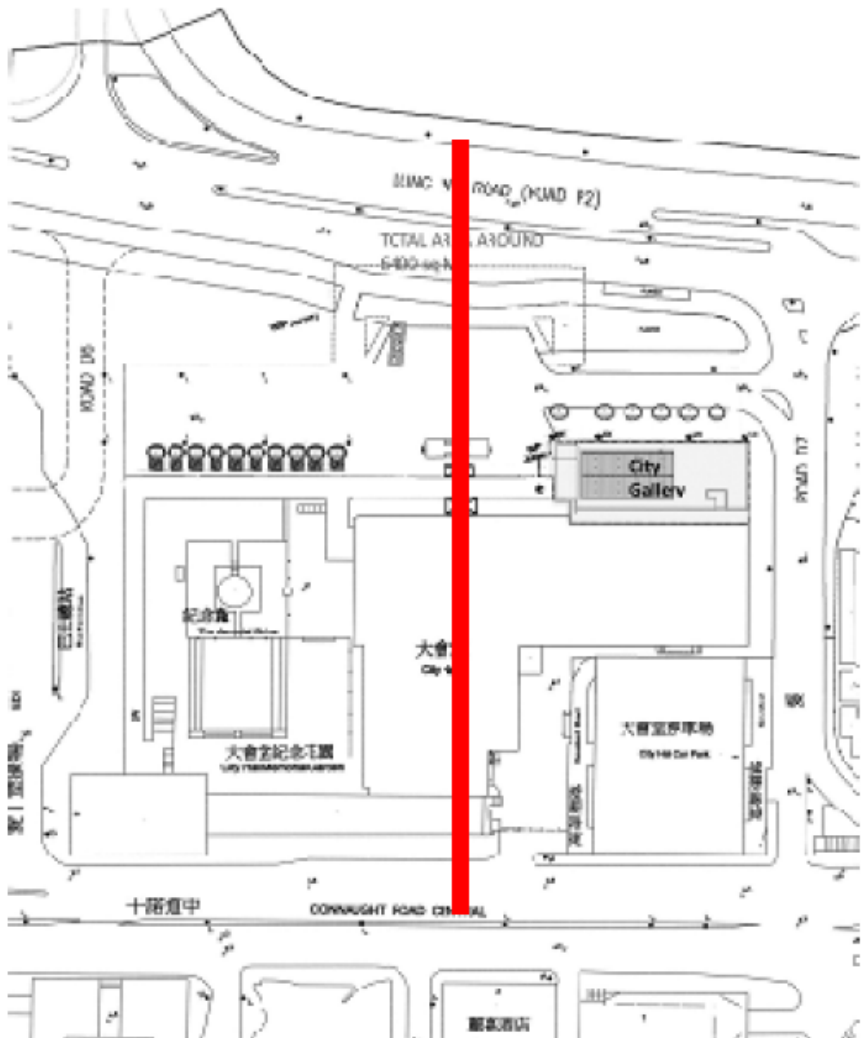


S-1 The hall-square-pier relationship

Historical Reference



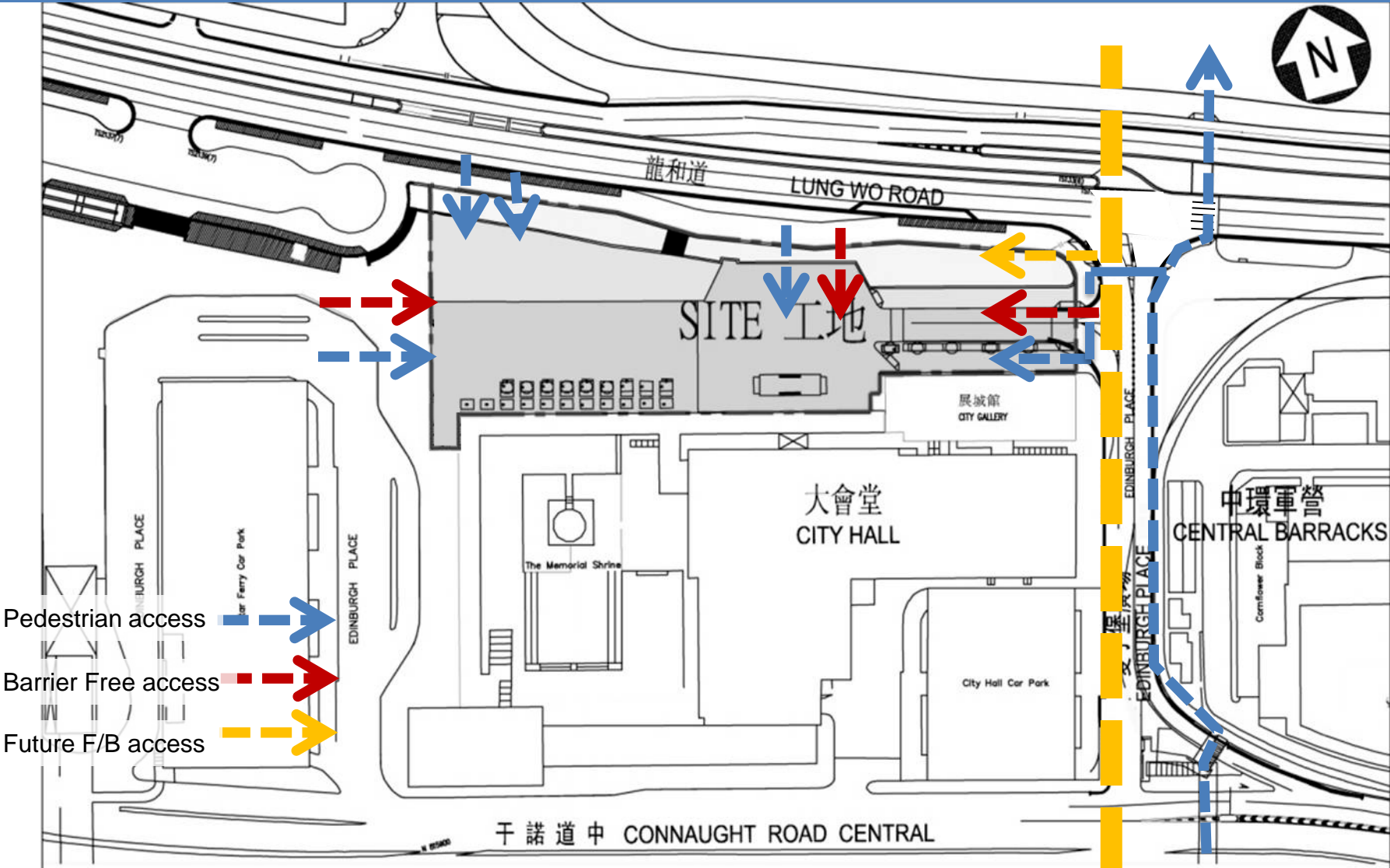
Historical Reference



S-3 Historic axis generating from the City Hall Low Block through the Ceremonial Parade Stage and the former Queen's Pier

3.0 Architectural Design Proposal

Site Access Study



Architectural Design Proposal



Architectural Design Proposal



Aerial View from NW

Architectural Design Proposal



Aerial View from NE



Architectural Design Proposal



Harbour Planning Principles

(a) Stakeholder Engagement

- consult relevant stakeholders including Central & Western District Council and cultural sector

(b) Sustainable Development

- embrace principles of sustainable development in the planning and design process
- promote vibrancy by bringing in diversity of activities
- improve accessibility with multiple access points and barrier-free access
- preserve all existing trees

Harbour Planning Principles

(c) Integrated Planning

- provide quality open space round the clock with green lawn and sheltered seating in passive zone and amphitheatre and performance area for cultural and ceremonial events, performances and exhibitions in active zone
- integrate cultural and leisure facilities and create synergy with the City Gallery and City Hall
- include unique design features that are compatible with the history of the site

(d) Accessible Harbour

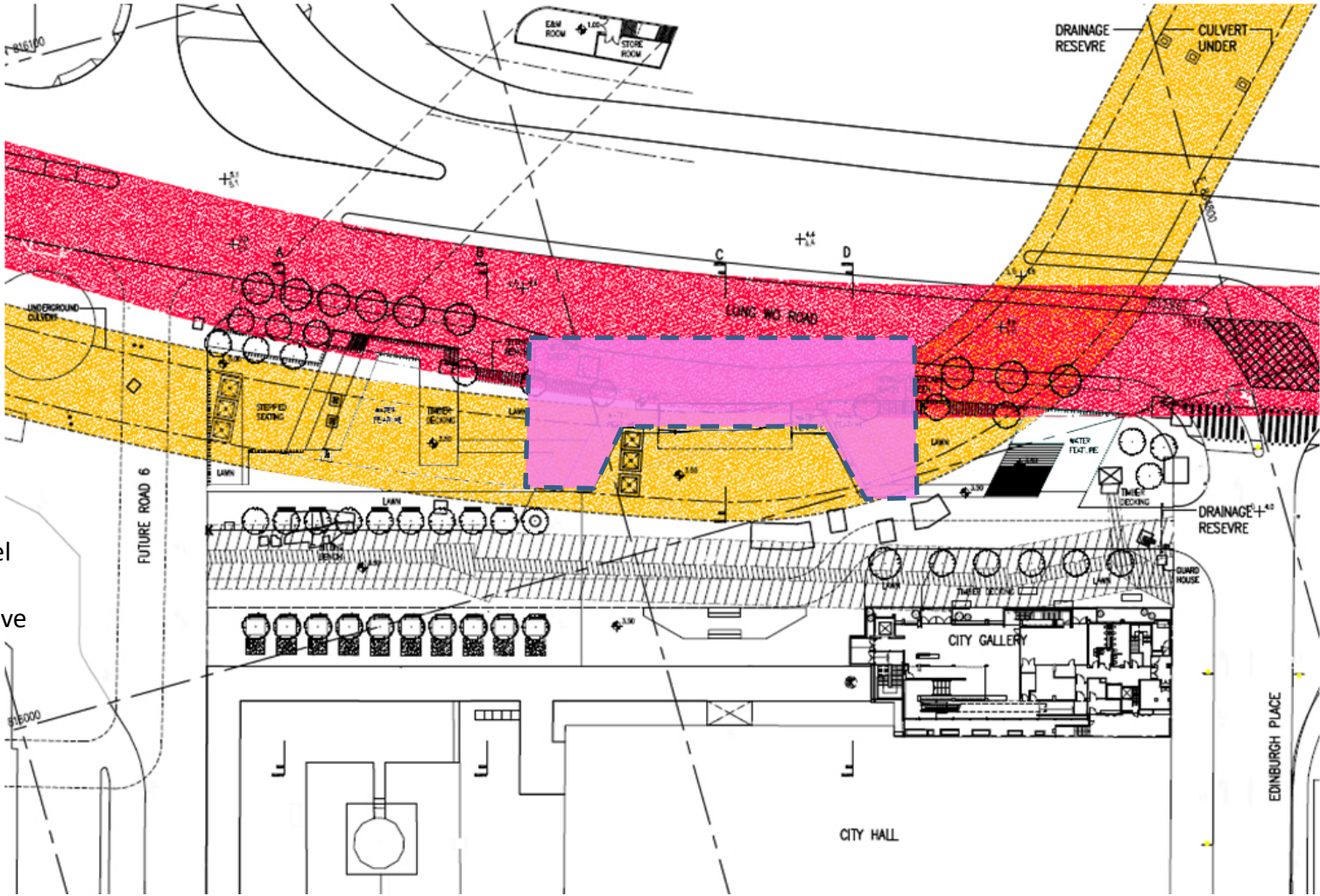
- become one of the key connection points between the Central hinterland and harbourfront
- enhance connectivity with multiple pedestrian access (including barrier-free access)
- allow room for provision of a future footbridge connecting to Site 4 of the new Central harbourfront

Way Forward

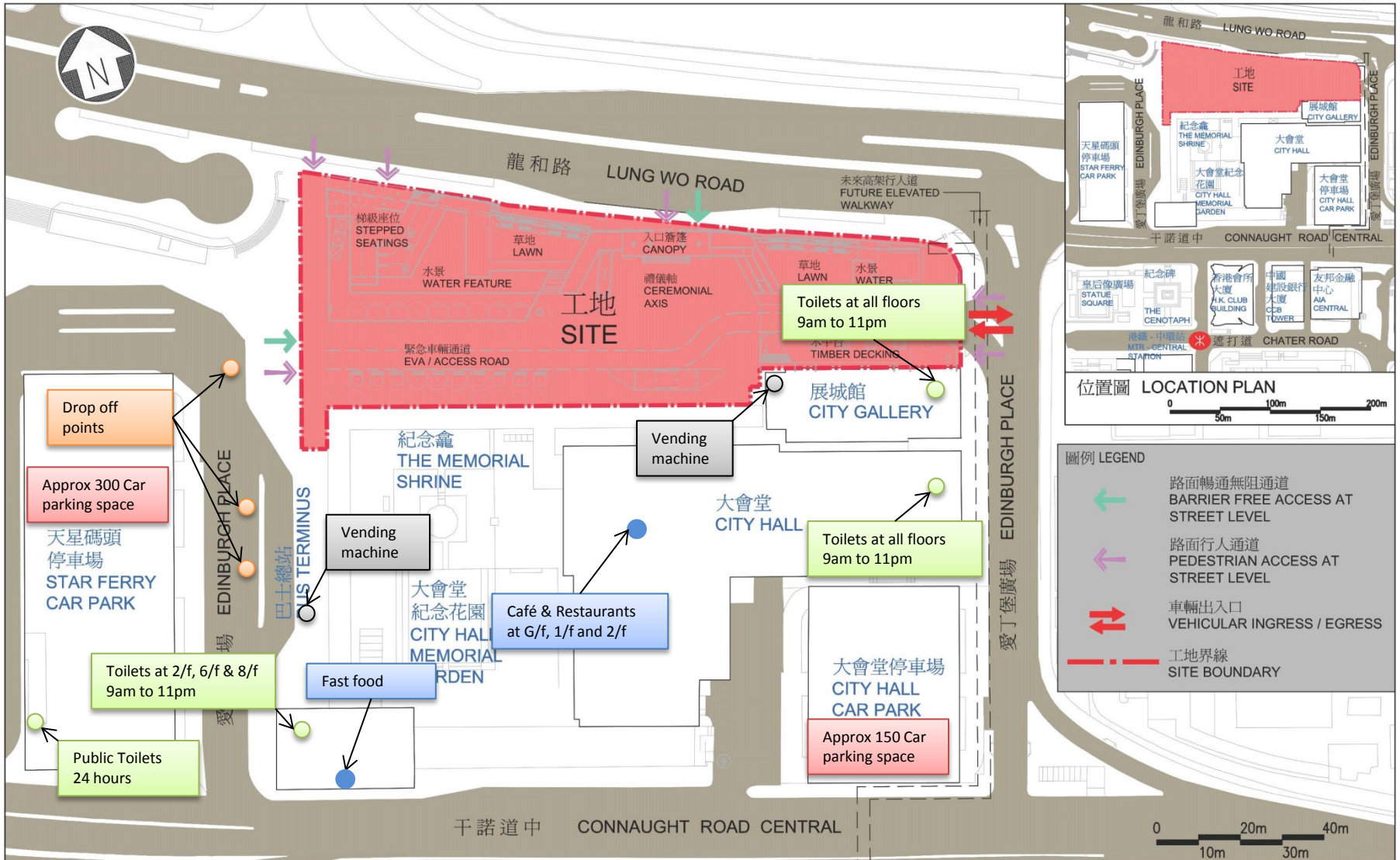
- Subject to public support and funding approval by LegCo, construction works are scheduled for commencement in late 2015 for completion in early 2018

Thank you

Site Constraint



- Legend:
- Overrun Tunnel
 - Drainage reserve



工地平面圖
SITE PLAN

RO447
前臨大會堂 / 展城館及愛丁堡廣場美化工程
Beautification works in front of City Hall / City Gallery and Edinburgh Place

